



Fixed roller transport conveyors can be powered or gravity operated. These conveyors offer a low-cost solution to material handling or act as the perfect complement to a larger system. Powered roller conveyors can be integrated with gravity conveyors and all other Sovex products.

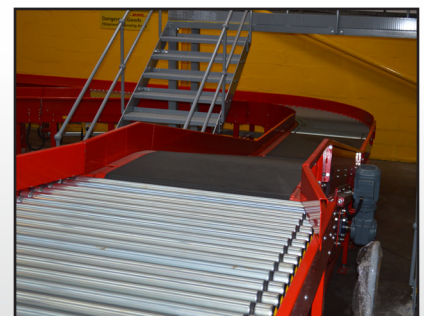
- ✓ Low maintenance
- ✓ High reliability
- ✓ Loading capacity of 50kg/m
- ✓ Installed at a small decline for product to move under gravity



Ideal for manual handling systems and stand alone lines; they are easy to install, very reliable and require minimal maintenance.



No power is required for gravity roller conveyors as anti-friction rollers aid the movement of goods.



Roller conveyors can also be integrated into existing systems and used alongside belt conveyors.



**T: +44 (0)151 608 2323**  
**E: sales@sovexsystems.com**

material handling **specialists**

## FEATURES OF THE FIXED ROLLER TRANSPORT CONVEYOR

<b>High Throughputs</b>	Sovex Fixed Roller Conveyors are designed to operate at speeds of up to 60m/min.
<b>Quiet Running</b>	Operating volumes can be as low as just 61dBa, ensuring Health & Safety obligations are fulfilled.
<b>Robust Design</b>	3mm sheet steel is used throughout the conveyor along with heavy duty rollers. Sovex conveyors are designed to last.
<b>Ease of Maintenance</b>	All parts which require maintenance are designed to be easily accessible thus minimising servicing times. Maintenance tasks are designed to be carried out quickly and easily; resulting in less downtime for the conveyor.
<b>Cost Effective</b>	One drive unit will drive up to 15m of lineshaft roller conveyor, keeping investment to a minimum.
<b>Designed for Safety</b>	All components have built in nip-protection and all conveyors are available with underguarding.
<b>Heavy Duty</b>	The standard operating load of the fixed roller transport conveyor is 50kg/m.
<b>Flexible</b>	The Sovex Design Team tailor all of our products ensuring we provide the best solutions for our customers.

## SPECIFICATIONS

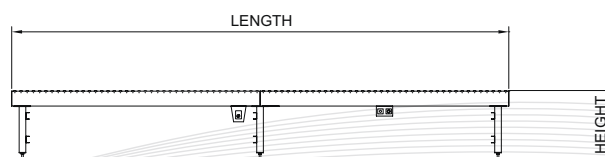
<b>Mains supply:</b> 415v, 3ph, 20A, 50Hz	<b>Roller Drive:</b> Geared motor unit/Lineshaft*	<b>Emergency Stops:</b> To suit application
<b>Load Capacity:</b> 50kg/m	<b>Transport Speed:</b> 30m/min	<b>Control Voltage:</b> 24 VDC
<b>Controls (on control panel door):</b> Start, Stop	<b>Transport Direction:</b> Reversible	<b>Mains Supply Connection:</b> Isolated supply to be provided by the customer to control panel

\* Smaller units use 24 VDC powered rollers for drive or can be fitted to straight section and slave driven using lineshaft.

**All types also available as non-powered gravity conveyor.**

## DIMENSIONS

	Length (mm)/ Angle (°)	Height (mm)	Roller Width (mm)
<b>Straight</b>	Any	800-900	600/800/900
<b>30/45/60/90° Bend</b>	30/45/60/90°	800-900	600/800/900
<b>30° Merge separate</b>	30°	800-900	600/800/900
<b>30° Insert Merge and 3m Straight</b>	3000	800-900	600/800/900
<b>30° Insert Merge and 6m Straight</b>	6000	800-900	600/800/900
<b>Lift Up Gate</b>	1350	800-900	600/800/900



Keeping your business moving