

TrenchSafe™

Pathway safety plate
for pedestrian use



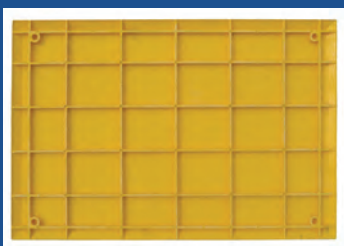
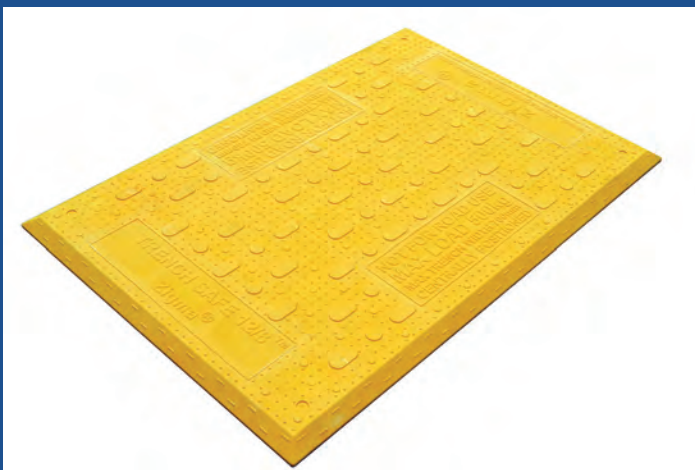
- » Manufactured from glass reinforced SMC
- » Tough and durable construction
- » Unique chevron traction™ surface greatly reduces slip
- » Available in two sizes
- » Optional corporate colours and company branding
- » DETR safety compliant

TrenchSafe™

Advantages & Benefits

- » Non-slip leading edge and unique chevron traction™ surface greatly reduces slip, even in adverse conditions ¹.
- » Made from single piece, glass reinforced SMC and subject to ISO9001 accredited quality control
- » Pre-pressed anchor points at each corner to fix TrenchSafe™ into position
- » Strengthened ribbed underside
- » Easy to clean and maintain
- » Reduced risk of theft - no scrap value
- » Easy to install, maximum of two man lift and no specialist equipment required
- » DETR Safety at Streetworks and Roadworks Code of Practice compliant
- » BS EN 124 and Safe Working Practise compliant
- » Ideally suited to cover apertures, bores or trenches during construction or repair work for utility, excavations, cabling and maintenance projects
- » Substantially lighter than steel covers.
- » Substantially stronger than wooden plates.

TrenchSafe™ 12/8



Dimensions:

| | | |
|-----------|---|--------|
| Length | - | 1200mm |
| Width | - | 800mm |
| Thickness | - | 25mm |

Weight: - 12.2 kg

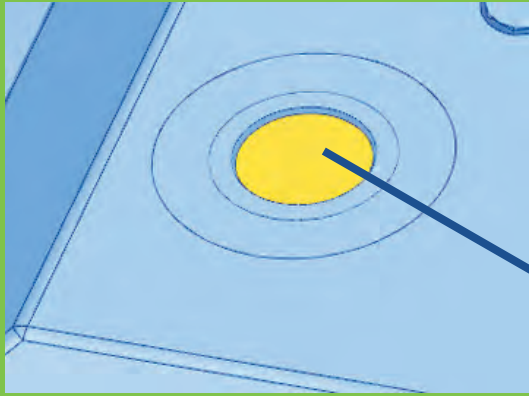
Transportation:

| | | |
|-----------------------|---|-----|
| Pallets per/container | - | 22 |
| Quantity per pallet | - | 30 |
| Total quantity | - | 660 |

Capable of withstanding a point load weight of up to 500kg over a 700mm span

Independently tested at both Lancaster University and SGS (China) to a maximum point load of 1300kg

TrenchSafe™ 12/8

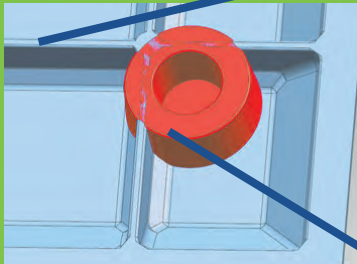


Anchor point knock-out
Diameter 25mm
Recesses 1mm

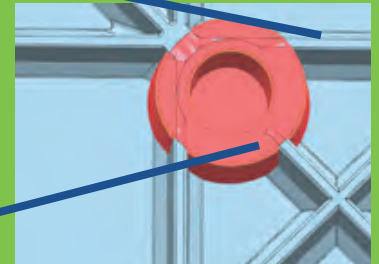
TrenchSafe™ 16/12



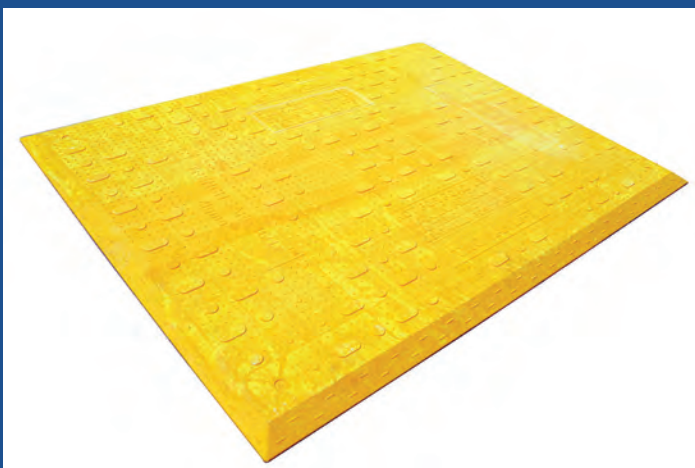
Strengthened and ribbed underside
Increases weight load capabilities
Reduces flexing



Knock-out underside:-
Diameter 25mm / Recess wall thickness 12mm
Knock-out thickness 1.2mm



TrenchSafe™ 16/12



Dimensions:

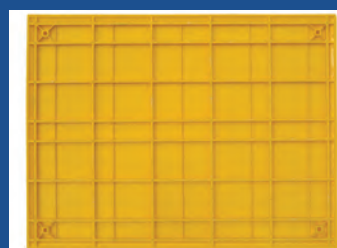
| | | |
|-----------|---|--------|
| Length | - | 1600mm |
| Width | - | 1200mm |
| Thickness | - | 25mm |

Weight: - 29 kg

Transportation:

| | | |
|-----------------------|---|-------|
| Pallets per/container | - | 9 |
| Quantity per pallet | - | 32/40 |
| Total quantity | - | 336 |

Capable of withstanding a point load weight of up to 500kg over a 900mm span



Independently tested at both Lancaster University and SGS (China) to a maximum point load of 1000kg

TrenchSafe™

Pathway safety plate for pedestrian use

Material: Glass reinforced SMC plastic

Colour: Yellow (Option for corporate colours and company branding)

| Dimensions: | TrenchSafe™ 12/8 | TrenchSafe™ 16/12 |
|-------------------|-------------------|-------------------|
| Length: | 1200mm | 1600mm |
| Width: | 800mm | 1200mm |
| Thickness: | 25mm | 25mm |
| Weight: | 12.2 kg | 29kg |
| 500kg Point load: | over a 700mm span | over a 900mm span |
| Tested point load | 1300kg | 1000kg |

International Sales Offices

Sales Office -
Germany

Tel: +49 (0) 211 / 17 900 144

Sales Office -
Ireland:

Tel: +353 (0) 91 766 878

Sales Office -
US and Canada:

Tel: +1 (0) 877 775 4403

TrenchSafe™ are available for worldwide sale and rental through our official distributors and agents - please contact us for further details.

The sale or hire of all temporary access and ground protection products are subject to Zigma® Ground Solutions' standard Terms and Conditions. These are available from our website www.zigmagroundsolutions.com or by telephoning our sales office, details can be found below.

*Load performance depends on ground conditions as well as the weight and type of vehicles and plant. Zigma® Ground Solutions Ltd, its agents or employees are not liable for any damage to existing ground or property through use of TrenchSafe™

Zigma Ground Solutions UK Head Office +44 (0) 8456 435 388 US Sales Tel: +1 (0) 877 775 4403
Unit 11, M11 Business Link, Parsonage Lane, Stansted, Essex, CM24 8GF. UK
email: sales@zigmagroundsolutions.com
web: www.zigmagroundsolutions.com


zigma®
Ground Solutions
The fast and safe way forward