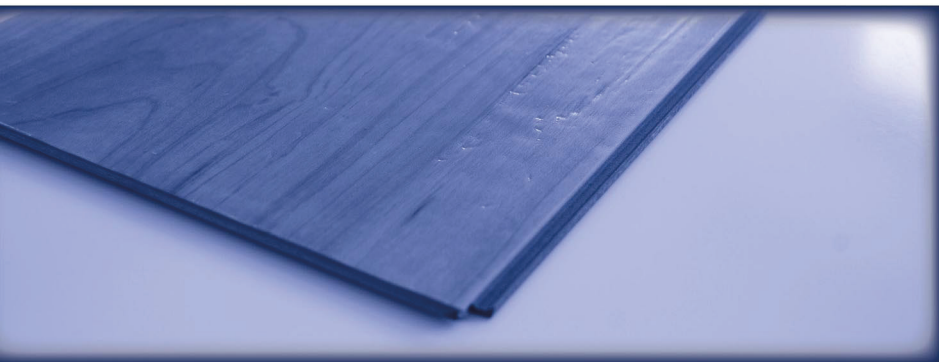
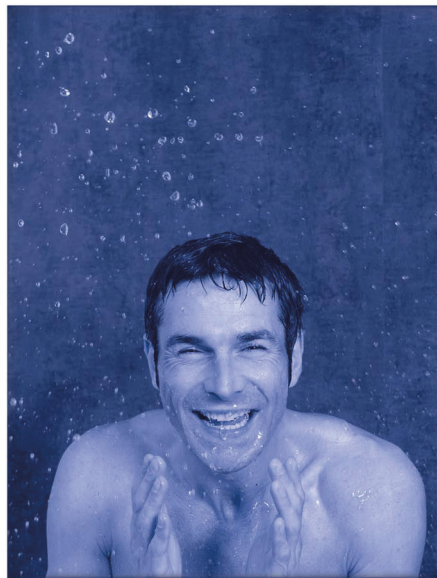


# multiPANEL

the collection

## Construction Products Regulation Declaration Of Performance



# CONTENTS

---

<b>multiPANEL</b>	<b>3</b>
<b>tilePANEL</b>	<b>4</b>
<b>cleanPANEL</b>	<b>6</b>
<b>polyPANEL/ceilingPANEL</b>	<b>7</b>
<b>twinFLOORstick</b>	<b>8</b>
<b>twinFLOORclick</b>	<b>9</b>
<b>multiPANELvanity tops</b>	<b>10</b>
<b>Factory Production Control Certificate</b>	<b>12</b>



# CONSTRUCTION PRODUCTS REGULATION - DECLARATION OF PERFORMANCE

Product Identification: **multiPANEL**

Type: All standard grades

Intended use: **Wood based panels for internal use as non-structural components in dry or humid conditions**  
EN 1995-1-1 Service Class 2

Company: Grant Westfield Ltd  
Westfield Avenue, Edinburgh, United Kingdom, EH11 2QH

System of assessment and verification of constancy of performance (AVCP): System 4

Provisions: **EN 13986:2004**  
**Wood-based panels for use in construction – Characteristics, evaluation of conformity and marking**  
EN 636-2:1997  
Plywood for use in humid conditions  
EN 438-3:2005  
High-pressure decorative laminates (HPL). Sheets based on thermosetting resins (usually called laminates). Classification and specifications for laminates less than 2mm thick intended for bonding to supporting substrates.

Essential characteristics	Performance
Bending strength	EN 636-2
Bonding quality	EN 314-2 Class 2
Durability (swelling in thickness)	EN 636-2
Durability (Moisture resistance)	EN 636-2
Reaction to fire	EN 636, 400kg/m <sup>3</sup> , >9mm: D-s2, d0 <i>When mounted without an airgap</i>
Water vapour permeability	70 wet / 200 dry
Formaldehyde	E1
Airborne sound insulation	NPD
Sound absorption	0.10 0.30
Thermal conductivity	0.13 W/m.°K

The performance of the product identified for the type specified is in conformity with the declared performance in the essential characteristics above.

The declaration of performance is issued under the sole responsibility of Grant Westfield Ltd.

Signed for and on behalf of Grant Westfield Ltd by:

Nigel Patch, Managing Director



Signature

Edinburgh on 01 July 2013  
(date and place of issue)

**Grant Westfield**  
building interiors

# CONSTRUCTION PRODUCTS REGULATION - DECLARATION OF PERFORMANCE

Product Identification: **tilePANEL SG**

Type: Standard Grade HPL Composite Panels

Intended use: **Internal wall panelling**

Company: Grant Westfield Ltd  
Westfield Avenue, Edinburgh, United Kingdom, EH11 2QH

System of assessment and verification of constancy of performance (AVCP): System 4

Provisions: **EN 438-7**  
**High-pressure decorative laminates (HPL) – Sheets based on thermosetting resins (Usually called Laminates) – Part 7: Compact laminate and HPL composite panels for internal and external wall and ceiling finishes**

<b>Essential characteristics</b>	<b>Performance</b>
Reaction to fire	D-s2,d0
Fire resistance	NPD
Water vapour permeability	110 wet / 250 dry
Resistance to fixings	>250N
Direct airborne sound insulation	NPD
Bonding strength	NPD
Flexural tensile strength	>90MPa
Flexural modulus	>9MPa
Thermal conductivity	0.25 W/m.°K
Content of pentachlorophenol	N/A
Release of formaldehyde	Class EI
Sound absorption	NPD
Durability	
- Resistance to wet conditions	<6%
- Density	>1350kg/m <sup>3</sup>

The performance of the product identified for the type specified is in conformity with the declared performance in the essential characteristics above.

The declaration of performance is issued under the sole responsibility of Grant Westfield Ltd.

Signed for and on behalf of Grant Westfield Ltd by:

Nigel Patch, Managing Director



Signature

Edinburgh on 01 July 2013  
(date and place of issue)

# CONSTRUCTION PRODUCTS REGULATION - DECLARATION OF PERFORMANCE

Product Identification: **tilePANEL FR**

Type: Fire Retardant Grade HPL Composite Panels

Intended use: **Internal wall panelling**

Company: Grant Westfield Ltd  
Westfield Avenue, Edinburgh, United Kingdom, EH11 2QH

System of assessment and verification of constancy of performance (AVCP): System 3

Provisions: **EN 438-7**  
**High-pressure decorative laminates (HPL) – Sheets based on thermosetting resins (Usually called Laminates) – Part 7: Compact laminate and HPL composite panels for internal and external wall and ceiling finishes**

Essential characteristics	Performance
Reaction to fire	Min C-s2, d0
Fire resistance	NPD
Water vapour permeability	110 wet / 250 dry
Resistance to fixings	>250N
Direct airborne sound insulation	NPD
Bonding strength	NPD
Flexural tensile strength	>90MPa
Flexural modulus	>9MPa
Thermal conductivity	0.25 W/m.°K
Content of pentachlorophenol	N/A
Release of formaldehyde	Class E1
Sound absorption	NPD
Durability	
- Resistance to wet conditions	<9%
- Density	>1350kg/m <sup>3</sup>

The performance of the product identified for the type specified is in conformity with the declared performance in the essential characteristics above.

The declaration of performance is issued under the sole responsibility of Grant Westfield Ltd.

Signed for and on behalf of Grant Westfield Ltd by:

Nigel Patch, Managing Director



Signature

Edinburgh on 01 July 2013  
(date and place of issue)

# CONSTRUCTION PRODUCTS REGULATION - DECLARATION OF PERFORMANCE

Product Identification:	<b>cleanPANEL</b>
Type:	Fire Retardant Grade HPL Composite Panels
Intended use:	<b>Internal wall panelling</b>
Company:	Grant Westfield Ltd Westfield Avenue, Edinburgh, United Kingdom, EH11 2QH
System of assessment and verification of constancy of performance (AVCP):	System 3
Provisions:	<b>EN 438-7</b> <b>High-pressure decorative laminates (HPL) – Sheets based on thermosetting resins (Usually called Laminates) – Part 7: Compact laminate and HPL composite panels for internal and external wall and ceiling finishes</b>

<b>Essential characteristics</b>	<b>Performance</b>
Reaction to fire	Min C-s2, d0
Fire resistance	NPD
Water vapour permeability	110 wet / 250 dry
Resistance to fixings	>250N
Direct airborne sound insulation	NPD
Bonding strength	NPD
Flexural tensile strength	>90MPa
Flexural modulus	>9MPa
Thermal conductivity	0.25 W/m.°K
Content of pentachlorophenol	N/A
Release of formaldehyde	Class E1
Sound absorption	NPD
Durability	
- Resistance to wet conditions	<6%
- Density	>1350kg/m <sup>3</sup>

The performance of the product identified for the type specified is in conformity with the declared performance in the essential characteristics above.

The declaration of performance is issued under the sole responsibility of Grant Westfield Ltd.

Signed for and on behalf of Grant Westfield Ltd by:

Nigel Patch, Managing Director



Signature

Edinburgh on 01 July 2013  
(date and place of issue)

**Grant Westfield**  
building interiors

tel +44(0)131 337 6262  
www.multipanel.co.uk

# CONSTRUCTION PRODUCTS REGULATION - DECLARATION OF PERFORMANCE

Product Identification: ceiling**PANEL** / poly**PANEL**  
Type: PVC Panel  
Intended use: **Internal ceiling and wall panelling**  
Company: Grant Westfield Ltd  
Westfield Avenue, Edinburgh, United Kingdom, EH11 2QH  
System of assessment and verification of constancy of performance (AVCP): System 3 (as determined from EN 13245-2)  
Notified Body Number: N/A  
EC Certificate of Conformity: IN-SH-CPD-5612-12028  
Factory Product Control: ISO 9001:2008 (Certificate No. 129515-2)  
Provisions: **EN 13245-2:2008**  
**Plastics – Unplasticized poly(vinyl chloride) (PVC-U) profiles for building applications – Part 2: PVC-U profiles and PVC-UE profiles for internal and external wall and ceiling finishes**

<b>Essential characteristics</b>	<b>Performance</b>
Reaction to fire (BS476:Part 7)	Class I Surface Spread of Flame
Resistance to fixings	As installation instruction
Durability (PVC-U profiles)	EN 13245-2
Falling height	1000mm
Test temperature	23°C
Falling mass	200g
Energy level	02J
Code	(23, 02)

The performance of the product identified for the type specified is in conformity with the declared performance in the essential characteristics above.

The declaration of performance is issued under the sole responsibility of Grant Westfield Ltd.

Signed for and on behalf of Grant Westfield Ltd by:

Nigel Patch, Managing Director



Signature

Edinburgh on 01 July 2013  
(date and place of issue)



# CONSTRUCTION PRODUCTS REGULATION - DECLARATION OF PERFORMANCE

Product Identification: **twinFLOORstick**

Type: Heterogeneous PVC Floor Tile, Grip System  
Thickness: 3.8mm, Density: 1960 ± 50 kg/m<sup>3</sup>

Intended use: **Floor covering within a building**

Company: Grant Westfield Ltd  
Westfield Avenue, Edinburgh, United Kingdom, EH11 2QH

System of assessment and verification of constancy of performance (AVCP): System 3

Notified Body Number: 1021 – TextilniZkusebniUstav, s.p. Valcavska 6, 65841 Brno, Czech Republic, performed determination of product type under system 3 of EN 14041:2004/AC:2006 and issued Type Examination Certificate No 1021-CPD-12/222-1 as of 25 September 2012.

Provisions: **EN 14041**  
**Resilient, textile and laminate floor coverings**  
EN 649  
Resilient floor coverings – Homogeneous and heterogeneous polyvinyl chloride floor coverings – specification

## Essential characteristics

## Performance

Reaction to fire	EN 14041:2004/AC:2006: Bfl-s1
Water tightness	Pass
Slip Resistance	EN 14041:2004/AC:2006: DS
Thermal conductivity	EN 14041:2004/AC:2006: 0.06 m2.K/W
Electrical behaviour	NPD
Content of Pentachlorophenol	EN 14041:2004/AC:2006: No PCP containing products added
Formaldehyde	EN 14041:2004/AC:2006: EI

The performance of the product identified for the type specified is in conformity with the declared performance in the essential characteristics above.

The declaration of performance is issued under the sole responsibility of Grant Westfield Ltd.

Signed for and on behalf of Grant Westfield Ltd by:

Nigel Patch, Managing Director



Signature

Edinburgh on 01 July 2013  
(date and place of issue)



# CONSTRUCTION PRODUCTS REGULATION - DECLARATION OF PERFORMANCE

Product Identification: **twinFLOORclick**

Type: Heterogeneous PVC Floor Tile, Click System  
Thickness: 5.0mm, Density: 1950 ± 50 kg/m<sup>3</sup>

Intended use: **Floor covering within a building**

Company: Grant Westfield Ltd  
Westfield Avenue, Edinburgh, United Kingdom, EH11 2QH

System of assessment and verification of constancy of performance (AVCP): System 3

Notified Body Number: 1611 – Universiteit Gent, Vakgroep Textielkunde, Belgium performed determination of product type under system 3 of EN 14041:2004/AC:2006 and issued Type Examination Certificate No 09-837 as of 08 February 2010.

Provisions: **EN 14041**  
**Resilient, textile and laminate floor coverings**  
EN 649  
Resilient floor coverings – Homogeneous and heterogeneous polyvinyl chloride floor coverings – specification

<b>Essential characteristics</b>	<b>Performance</b>
Reaction to fire	EN 14041:2004/AC:2006: Bfl-s I
Water tightness	NPD
Slip Resistance	EN 14041:2004/AC:2006: DS
Thermal conductivity	EN 14041:2004/AC:2006: 0.0329 m <sup>2</sup> .K/W
Electrical behaviour	EN 14041:2004/AC:2006: 1.8KV (Pass)
Content of Pentachlorophenol	EN 14041:2004/AC:2006: No PCP containing products added
Release of Formaldehyde	EN 14041:2004/AC:2006: E1

The performance of the product identified for the type specified is in conformity with the declared performance in the essential characteristics above.

The declaration of performance is issued under the sole responsibility of Grant Westfield Ltd.

Signed for and on behalf of Grant Westfield Ltd by:

Nigel Patch, Managing Director



Signature

Edinburgh on 01 July 2013  
(date and place of issue)

# CONSTRUCTION PRODUCTS REGULATION - DECLARATION OF PERFORMANCE

Product Identification: **multiPANEL Vanity Top**

Type: MDF Core

Intended use: **Wood based panels for internal use as non-structural components in dry or humid conditions**  
EN 1995-1-1 Service Class 2

Company: Grant Westfield Ltd  
Westfield Avenue, Edinburgh, United Kingdom, EH11 2QH

System of assessment and verification of constancy of performance (AVCP): System 4

Provisions: **EN 13986:2004**  
**Wood-based panels for use in construction – Characteristics, evaluation of conformity and marking**  
EN 622-5:2009  
Fibreboards. Specifications. Requirements for dry process boards (MDF)  
EN 438-3:2005  
High-pressure decorative laminates (HPL). Sheets based on thermosetting resins (usually called laminates). Classification and specifications for laminates less than 2mm thick intended for bonding to supporting substrates

<b>Essential characteristics</b>	<b>Performance</b>
Bending strength	EN 622-5: 0.55N/mm <sup>2</sup>
Durability (swelling in thickness – 24h %)	EN 622-5: 10
Durability (Moisture resistance)	NPD
Reaction to fire (EN 13501-1)	EN 622-5, 600kg/m <sup>3</sup> , >9mm: D-s2, d0 When mounted without an air gap
Water vapour permeability	At 600kg/m <sup>3</sup> : 12 wet / 20 dry
Formaldehyde	E1
Airborne sound insulation	NPD
Sound absorption	At >400kg/m <sup>3</sup> : 0.10 0.20
Thermal conductivity	At 600kg/m <sup>3</sup> : 0.10 W/m.°K

The performance of the product identified for the type specified is in conformity with the declared performance in the essential characteristics above.

The declaration of performance is issued under the sole responsibility of Grant Westfield Ltd.

Signed for and on behalf of Grant Westfield Ltd by:

Nigel Patch, Managing Director



Signature

Edinburgh on 01 July 2013  
(date and place of issue)

# CONSTRUCTION PRODUCTS REGULATION - DECLARATION OF PERFORMANCE

Product Identification: **multiPANEL Vanity Top**

Type: Particleboard (P3) Core

Intended use: **Wood based panels for internal use as non-structural components in dry or humid conditions**  
EN 1995-1-1 Service Class 2

Company: Grant Westfield Ltd  
Westfield Avenue, Edinburgh, United Kingdom, EH11 2QH

System of assessment and verification of constancy of performance (AVCP): System 4

Provisions: **EN 13986:2004**  
**Wood-based panels for use in construction – Characteristics, evaluation of conformity and marking**  
EN 312:2010  
Particleboards. Specifications.  
EN 438-3:2005  
High-pressure decorative laminates (HPL). Sheets based on thermosetting resins (usually called laminates). Classification and specifications for laminates less than 2mm thick intended for bonding to supporting substrates.

Essential characteristics	Performance
Bending strength	EN 312: 0.55N/mm <sup>2</sup>
Durability (swelling in thickness – 24h %)	EN 312
Durability (Moisture resistance)	EN 312
Reaction to fire (EN 13501-1)	EN 312, 600kg/m <sup>3</sup> , >9mm: D-s2, d0 When mounted without an air gap
Water vapour permeability	At 600kg/m <sup>3</sup> : 15 wet / 50 dry
Formaldehyde	E1
Airborne sound insulation	NPD
Sound absorption	0.10 0.25
Thermal conductivity	At 600kg/m <sup>3</sup> : 0.12 W/m.°K

The performance of the product identified for the type specified is in conformity with the declared performance in the essential characteristics above.

The declaration of performance is issued under the sole responsibility of Grant Westfield Ltd.

Signed for and on behalf of Grant Westfield Ltd by:

Nigel Patch, Managing Director



Signature

Edinburgh on 01 July 2013  
(date and place of issue)

# DECLARATION OF FACTORY PRODUCTION CONTROL

In compliance with the Construction Products Regulations (or CPR), we hereby declare that the construction products listed below, manufactured by Grant Westfield Ltd or placed on the market by us, are compliant with the relevant harmonised European Standard as stated. All products are declared for conformance to the requirements of Assessment and Verification of Constancy of Performance (AVCP) system level 3 or 4 in Annex ZA of each relevant standard.

Product	hrEN Standard	Type of the Construction Product
<b>multiPANEL</b> , Vanity Top, Entity, Facade Flush, Facade Deco, System M, Options Essence, Options SC, ClipClad Basic, multilab and Ocean Interiors	EN 13986:2004	Wood based panels for internal use as non-structural components in dry or humid conditions.
Laminates including: <b>tilePANEL</b> , <b>cleanPANEL</b> , Entity Wet, Facade Deco, System M, Options Scuba, Options Scamp, Options SC, and ClipClad Seal,	EN 438-7:2005	High-pressure decorative laminates (HPL) – Sheets based on thermosetting resins (usually called laminates) – Part 7: Compact laminate and HPL composite panels for internal and external wall and ceiling finishes
PVC products including: <b>ceilingPANEL</b> , <b>polyPANEL</b> and <b>multiPANEL</b> Accessories + AC:2009	EN 13245-2:2008	Plastics – Unplasticized poly(vinyl chloride) (PVC-U) profiles for building applications – Part 2: PVC-U profiles and PVC-UE profiles for internal and external wall and ceiling finishes
PVC vinyl products including: <b>twinFLOORstick</b> , <b>twinFLOORclick</b> , EN 14041:2004	EN 14041:2004 + AC:2006	Resilient, textile and laminate floor coverings – Essential characteristics

**Factory Location:** Grant Westfield Ltd, Westfield Avenue, Edinburgh, EH11 2QH

The Factory Production Control procedures/routines operated by Grant Westfield Ltd satisfy the requirements under the Construction Products Regulations for conformance to the Assessment and Verification of Constancy of Performance (AVCP) system level 3 or 4 in each of the Annex ZA of the relevant standards.

Grant Westfield Ltd holds certificate number FM00929 from BSi, and operates a Quality Management System which complies with the requirements of ISO 9001:2008 for the following scope:

*The manufacture, supply, space planning and installation management of panel based products including laboratory furniture, cubicles, washrooms, wall panelling systems, cabinets and desking.*

Originally registered: 01/11/1986

Latest issue: 10/07/2013

Expiry Date: 26/08/2016

Signed for and on behalf of Grant Westfield Ltd by:

Nigel Patch, Managing Director



Signature

Edinburgh on 22 July 2013  
(date and place of issue)