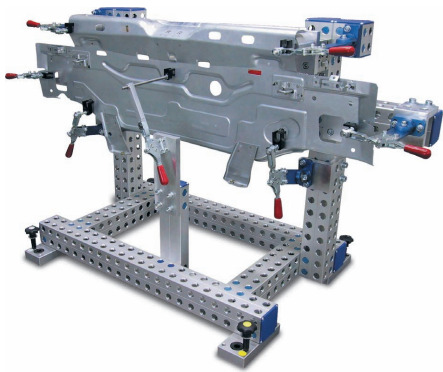


Silverline



Produktübersicht
Product Overview

Paletti



Paletti Profilsysteme GmbH & Co. KG
Gewerbepark Meißen 17
D - 32423 Minden

Tel.: +49 (571) 38 73 03 - 0
Fax: +49 (571) 3 69 97

e-Mail: sales@paletti.de
Website: <http://www.paletti.de>

Konzept, Gestaltung, Umsetzung und Fotografien

Die Angaben in dieser Produktübersicht wurden mit äußerster Sorgfalt erarbeitet und geprüft. Trotzdem kann für fehlerhafte oder unvollständige Angaben keine Haftung übernommen werden. Nachdruck, auch auszugsweise, ist nur mit unserer schriftlichen Genehmigung gestattet. Änderungen im Sinne technischer Verbesserungen bleiben vorbehalten.

© *Paletti* Profilsysteme GmbH & Co. KG

Patente

Wir weisen darauf hin, dass viele der in dieser Produktübersicht dargestellten Komponenten und Produkte patent- und warenrechtlichem Schutz unterliegen. Die Nachahmung geschützter Erzeugnisse stellt eine Rechtsverletzung dar und verpflichtet zu Schadenersatz. Angaben und Darstellungen in diesem Katalog befreien den Anwender nicht von der eigenen Prüfung auf mögliche Ansprüche aus Schutzrechten Dritter.

Paletti Profilsysteme GmbH & Co. KG
Gewerbepark Meißen 17
D - 32423 Minden

Tel.: +49 (571) 38 73 03 - 0
Fax: +49 (571) 3 69 97

e-Mail: sales@paletti.de
Website: <http://www.paletti.de>

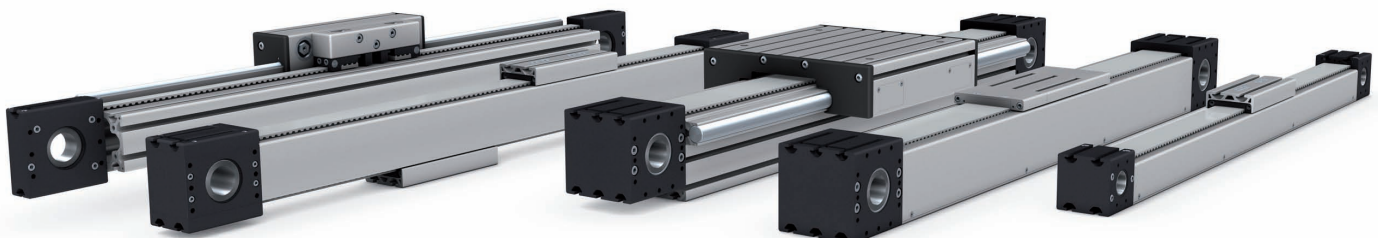
Concept, Design, Realization And Photos

The indications in this product overview were elaborated very detailed and with care. Nevertheless, we assume no liability for incorrect or incomplete indications. Reproduction, also in extracts, is only permitted with our approval. Changes for the purpose of technical corrections remain reserved.

© *Paletti* Profilsysteme GmbH & Co. KG

Patents

We indicate that many components in this product overview are patent-protected and trademarked. The reproduction of proprietary goods violates rights and obligates to compensation. Indications and descriptions in this catalog do not disengage the operator from the own verification of possible claims for the property rights of a third party.



Mit System zum Ziel

Die Firma *Paletti* Profilsysteme ist als junges Unternehmen im Bereich der Herstellung innovativer Produktionsmittel sowie in der Planung und Fertigung tätig. Der Produktionsschwerpunkt der Firma *Paletti* Profilsysteme liegt in der Entwicklung und Fertigung eines Profilbaukastensystems aus Aluminium.

Das Firmengrundkonzept vor Entwicklungsbeginn lag darin, der vom Markt geforderten hohen Flexibilität und Wirtschaftlichkeit im Maschinen- und Anlagenbau Rechnung zu tragen.



Hauptsitz Minden / Meißen
Head office Minden / Meißen

Ausgestattet mit modernsten CNC-Produktionsanlagen und einem qualifizierten Team von Ingenieuren und Fachleuten hat sich *Paletti* Profilsysteme in kürzester Zeit einen Namen gemacht.

Anpassungsfähigkeit ist die Garantie für das Leben in der Natur. Dieser Grundsatz der Flexibilität gilt auch in der modernen Industrie. Durch den rasanten Fortschritt im Bezug auf Neuerungen der Produktionsmittel und deren Anpassung an vorhandene Arbeitssysteme ist es erforderlich geworden, flexible und kompatible Systeme in der Produktion einzusetzen.

Um diese Aufgabe erfüllen zu können, entwickelte *Paletti* Profilsysteme das Aluminium-Profilsystem **Silverline**, das für alle Einsatzmöglichkeiten geeignet ist. Alle Einzelteile und Hauptgruppen sind konstruktiv so ausgelegt, das ihr Zusammenbau problemlos und damit wirtschaftlich ist.

Paletti-Vorteile sind:

- höchste Qualität
- Präzisionsarbeit
- optimales Preis- / Leistungsverhältnis
- termingetreue Auftragsabwicklung
- Planung und Entwicklung unterschiedlicher Aufgaben



Arriving To The Aim Through System

The company *Paletti* Profilsysteme is a young organisation active in the manufacture of innovative production methods, as well as producing future-oriented technologies. *Paletti's* manufacturing strength lies in the development and manufacture of a universal modular-based profile systems, made from aluminum.

The basic concept of the company before any development began was to take account of the high flexibility and economic viability demanded by the market place for machine and plant construction.



Werk Lahde
Plant Lahde

Equipped with the most up-to-date CNC production facilities and with the support of a qualified team of engineers and specialists, *Paletti* Profilsysteme has in a very short time made a name for itself.

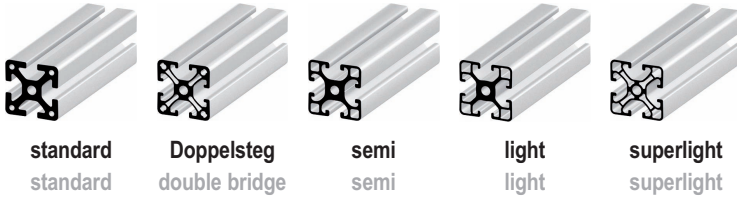
Adaptability is the guarantee for life in nature. This principle of flexibility also applies to the modern industry. With the rapid progress regarding improvements of the means of production and their adaptation to existing work flows, it has become necessary to utilise flexible and compatible systems for the production.

In order to perform this task, *Paletti* Profilsysteme has evolved the aluminum profile system **Silverline**, which is suitable for all fields of application. All single components and main groups are structurally designed in the way that the assembling succeeds without any difficulties and with it it is profitable.

Paletti's benefits are:

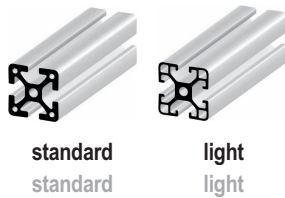
- high quality
- precision work
- very effective price / cost ratio
- order-processing that meets deadlines
- planning and development services





40

- Raster 40
- 8er Nut
- Kernlochbohrung für M 8
- matrix 40
- t-slot 8
- center hole for M 8



1.5

- Raster 1,5"
- 8er Nut
- Kernlochbohrung für M 8
- matrix 1.5"
- t-slot 8
- center hole for M 8

30

- Raster 30
- 8er Nut
- Kernlochbohrung für M 8
- matrix 30
- t-slot 8
- center hole for M 8

20

- Raster 20
- 5er Nut
- Kernlochbohrung für M 5
- matrix 20
- t-slot 5
- center hole for M 5

1.0

- Raster 1,0"
- 5er Nut
- Kernlochbohrung für M 5
- matrix 1.0"
- t-slot 5
- center hole for M 5



Das Silverline-System

Die Anwendungsvielfalt des **Silverline**-Systems erstreckt sich von einfachen statischen Aufbauten, wie z.B. Trenn- und Schutzwände, über Regale, Arbeits- und Labortische bis hin zu Designermöbeln.

Mit integrierten Linearsystemen lassen sich komplexe Fertigungs- und Automatisierungsanlagen problemlos erstellen. Dabei bilden die einzelnen Linearachsen bereits das tragende Grundgestell. Die aus einem gezogenen Profil hergestellten Laufwagen ermöglichen Plattformen von bis zu 3m Länge, wobei die Belastungsgrenzen durch die Anzahl der eingesetzten Rollen variiert werden können, um auch große Lasten zu händeln.

The Silverline System

The diversity of applications of **Silverline** systems ranges from static constructional systems, such as partitions and protective walls and from shelves, work and laboratory benches to designer furniture.

Complex plants and factory automation machinery can be developed without any problems with integrated linear systems. The single linear axes already form the supporting base frame hereby. The carriages made of the torn profile offer platforms up to 3 meters long, whereby the load limit can be varied by the number of rolls utilized in order to handle heavy loads as well.





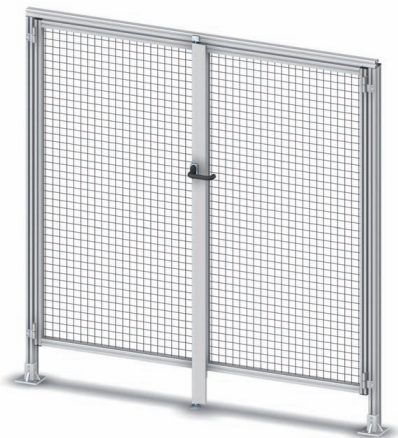
Lineartechnik
Linear Motion Systems



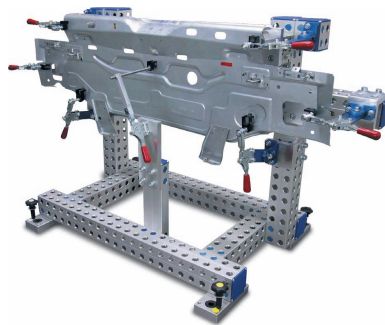
Fördertechnik
Conveyor Systems



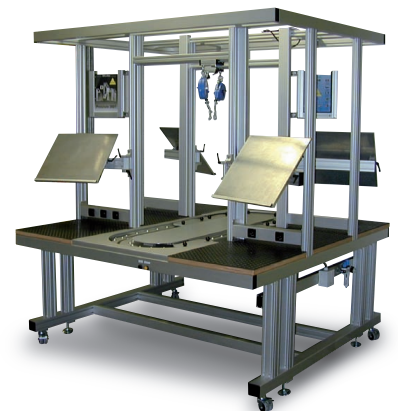
Laserkabinen
Laser Enclosures



Schutz- und Trennwandsysteme
Protection And Separating Wall Systems

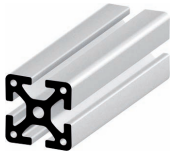


Präzisions- und Messtechnik
Precision And Measuring Technology



Arbeits- und Labortische
Work Stations And Laboratory Furniture

40 Profile 40 standard
Profiles 40 standard



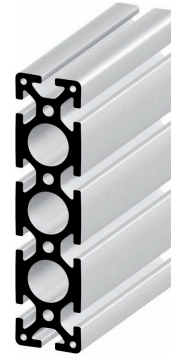
40x40



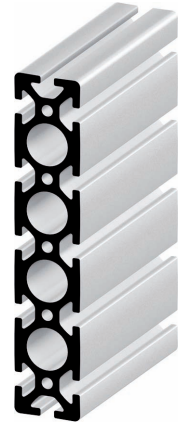
40x80



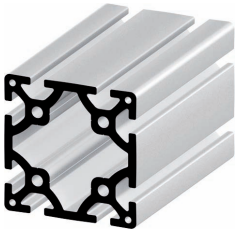
40x120



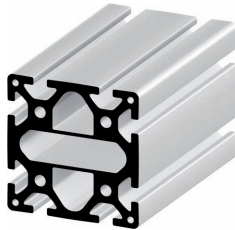
40x160



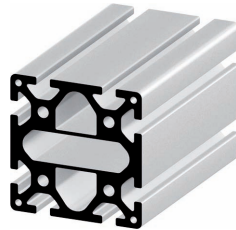
40x200



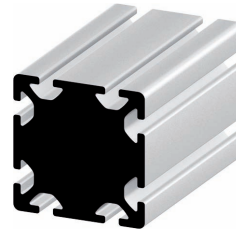
80x80



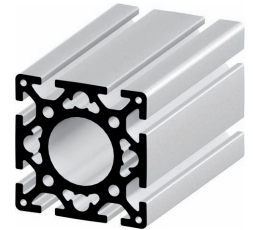
80x80 Steg
80x80 bridge



80x80 Steg NV
80x80 bridge NV



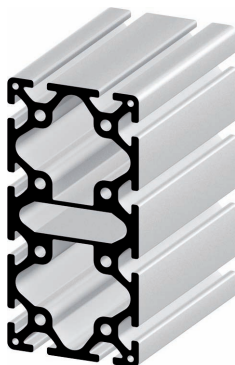
80x80 voll
80x80 filled



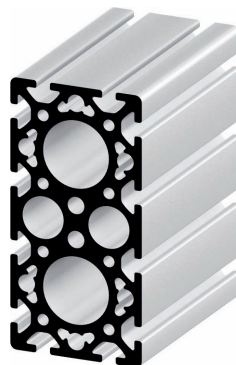
80x80 rund
80x80 round



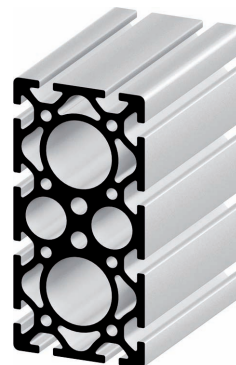
80x120



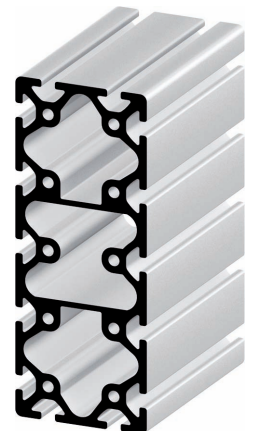
80x160 Steg
80x160 bridge



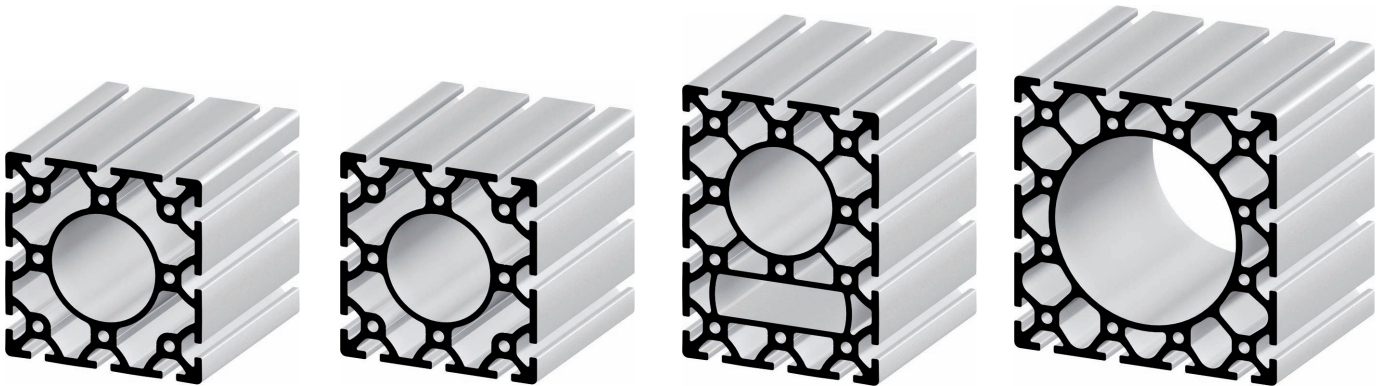
80x160 rund
80x160 round



80x160 rund NV
80x160 round NV



80x200



120 x 120

120 x 120 NV

120 x 160

160 x 160



Abdeckprofil 40
Cover Profile 40

16 x 40

16 x 80

28 x 120

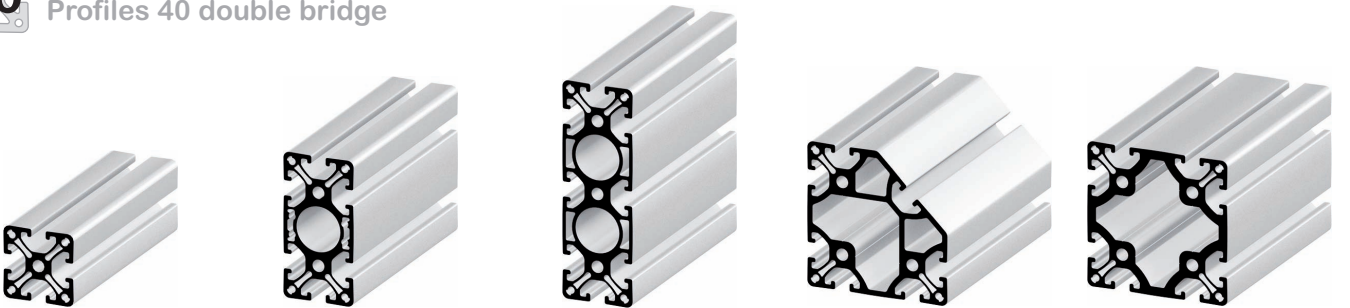
28 x 160

50 x 100

100 x 100



40 Profile 40 Doppelsteg
Profiles 40 double bridge



40 x 40 Doppelsteg
40 x 40 double bridge

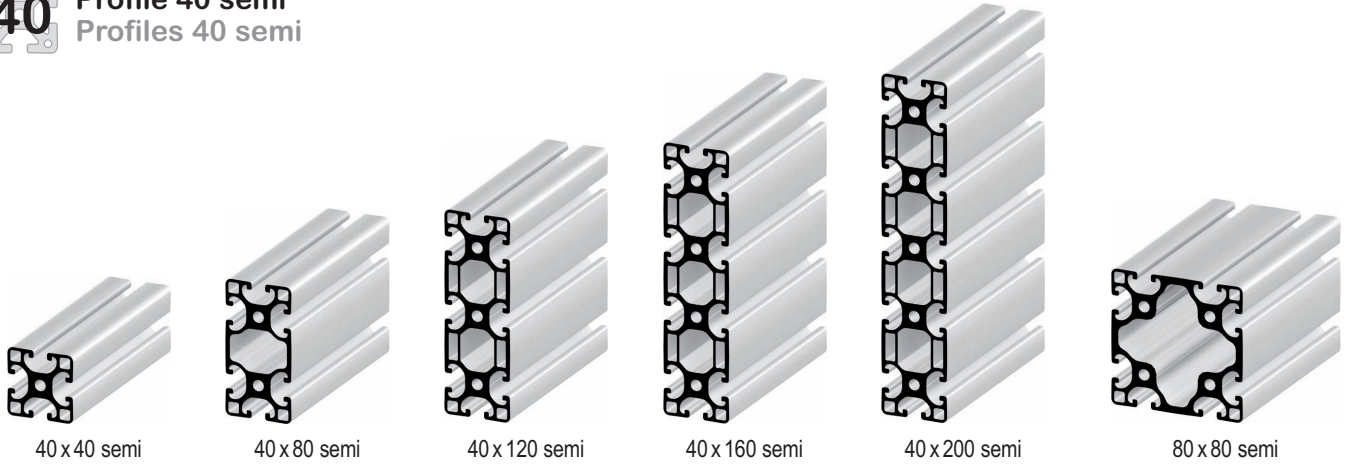
40 x 80 Doppelsteg
40 x 80 double bridge

40 x 120 Doppelsteg
40 x 120 double bridge

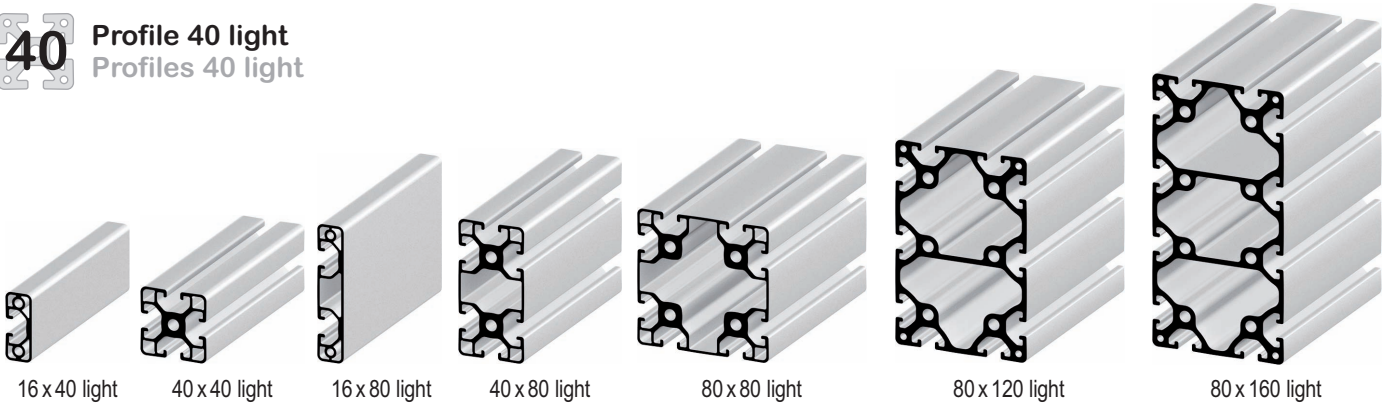
80 x 80 Eck 7N Doppelsteg
80 x 80 edge 7N double bridge

80 x 80 Doppelsteg
80 x 80 double bridge

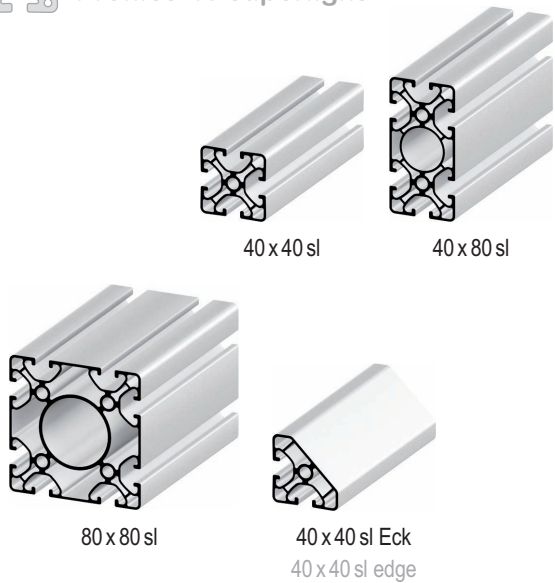
40 Profile 40 semi
Profiles 40 semi



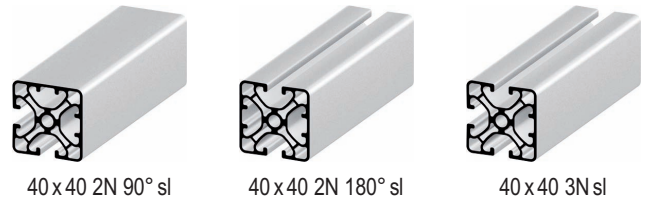
40 Profile 40 light
Profiles 40 light



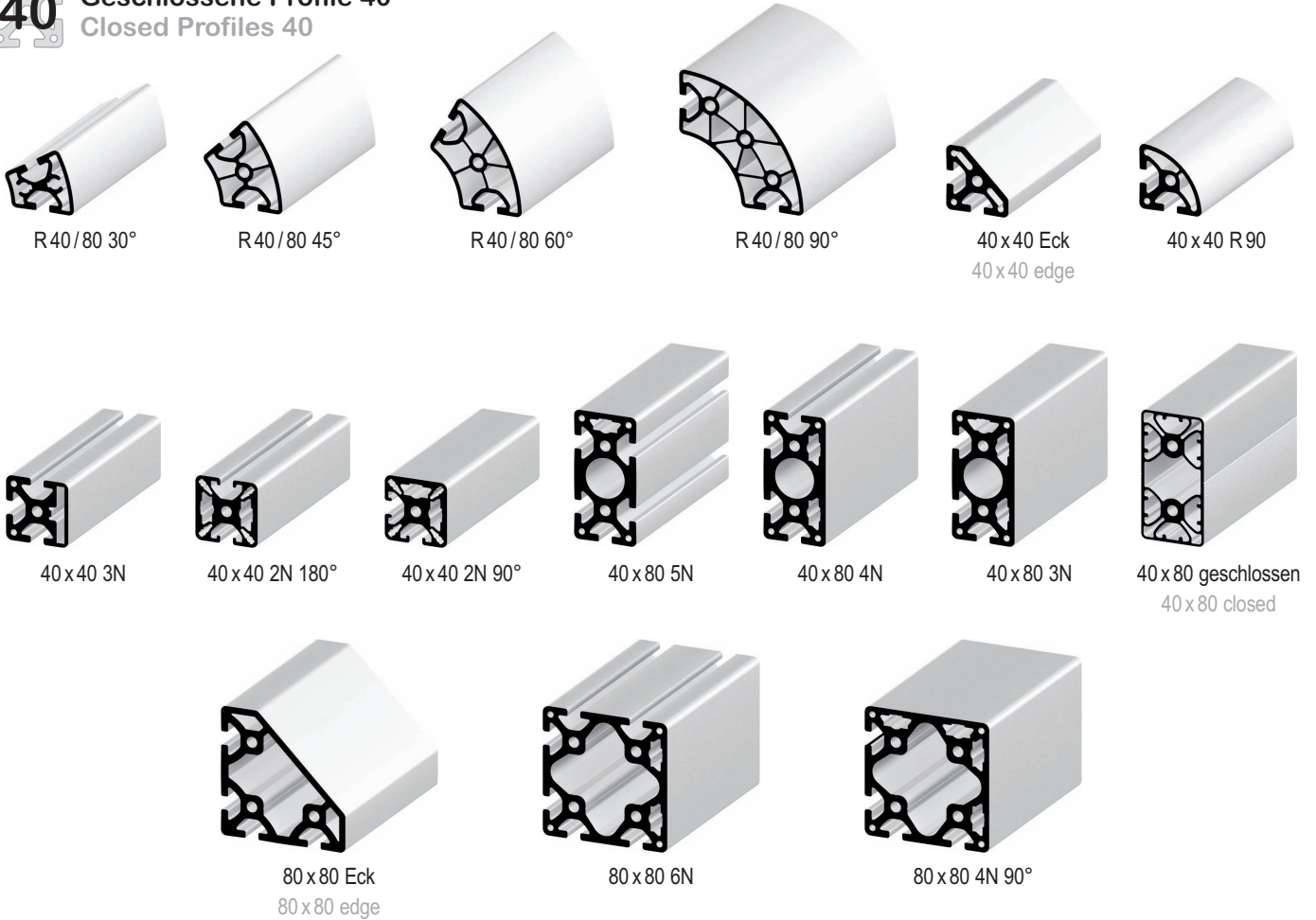
40 Profile 40 superlight
Profiles 40 superlight



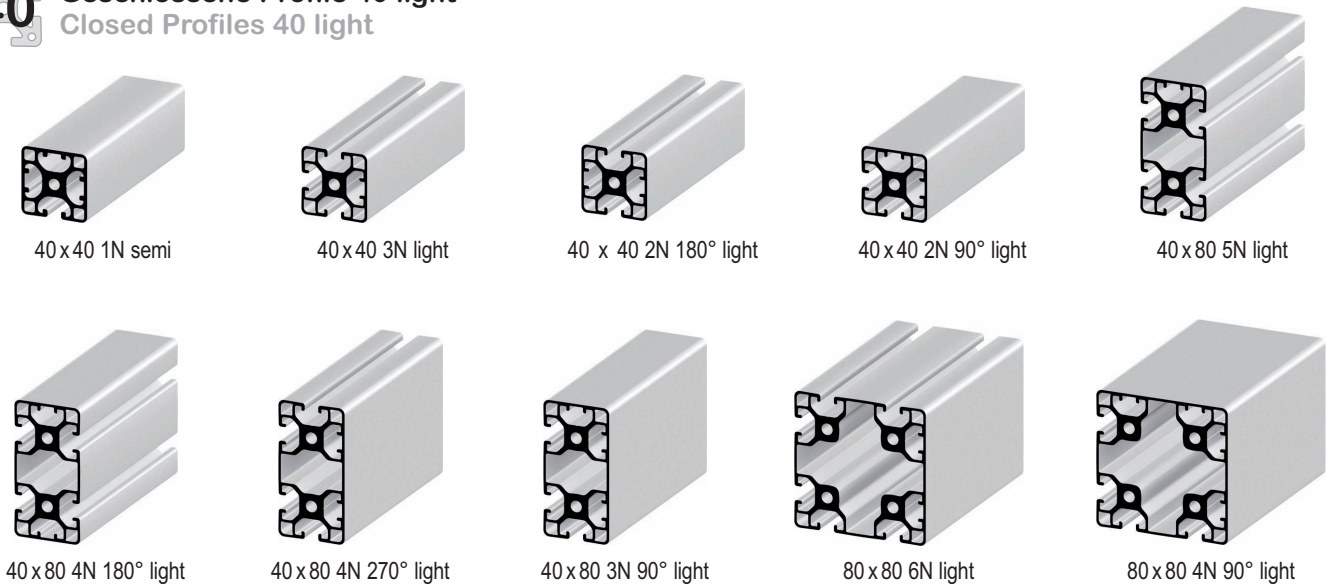
40 Geschlossene Profile 40 superlight
Closed Profiles 40 superlight



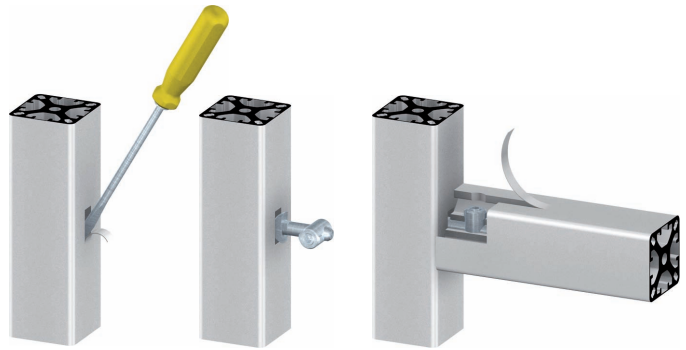
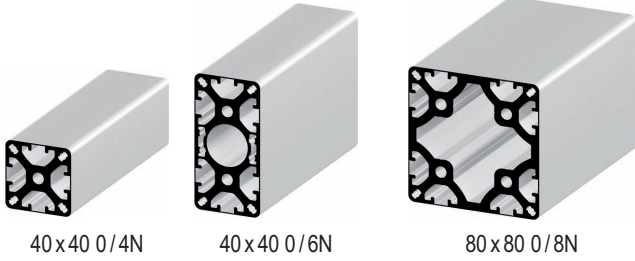
40 Geschlossene Profile 40
Closed Profiles 40



40 Geschlossene Profile 40 light
Closed Profiles 40 light



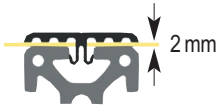
40 Abreißprofile 40
Tear-Off Profiles 40



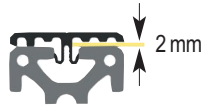
40 Profile für Schutzeinrichtungen
Profiles For Protective Walls



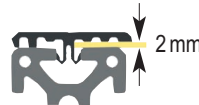
Blendenprofil 40/2 180°
Blend Profile 40/2 180°



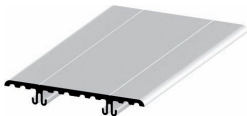
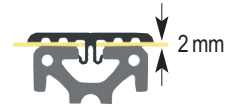
Blendenprofil 40/2 90°
Blend Profile 40/2 90°



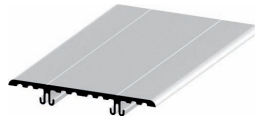
Blendenprofil 42/2 90°
Blend Profile 42/2 90°



Blendenprofil 44/2 180°
Blend Profile 44/2 180°



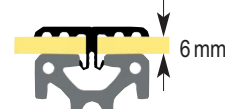
Blendenprofil 80/2 180°
Blend Profile 80/2 180°



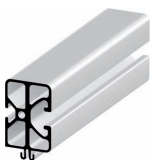
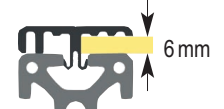
Blendenprofil 84/2 180°
Blend Profile 84/2 180°



Blendenprofil 40/6 180°
Blend Profile 40/6 180°



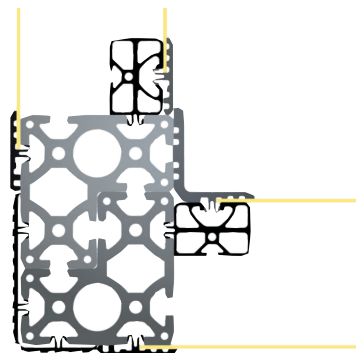
Blendenprofil 40/6 90°
Blend Profile 40/6 90°



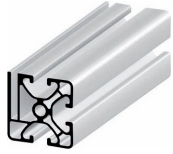
Anschlagprofil 40
Edge Stop Profile 40



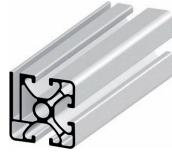
Eckblende 40
Blend Corner 40



40 Schutzzaunprofile 40
Protection Wall Profiles



40/4



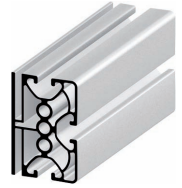
40/4 8.6



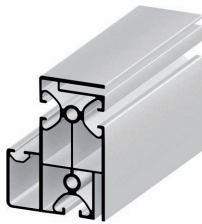
40/4 semi



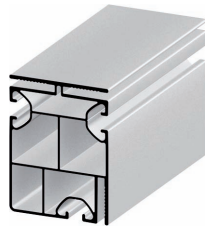
40/4 8.6 semi



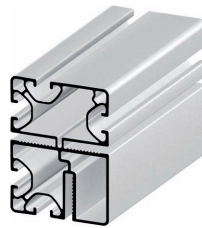
40/4 180°



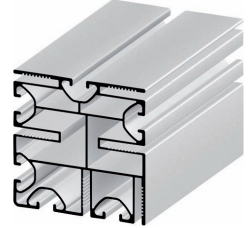
Ständertürprofil 60 x 80
Support Leg Door Profile 60 x 80



Ständerprofil 60 x 80
Support Leg Profile 60 x 80

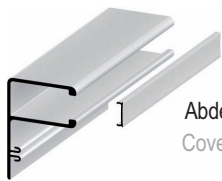


Ständerprofil 60 x 80 5N
Support Leg Profile 60 x 80 5N



Ständerprofil 80 x 80
Support Leg Profile 80 x 80

Einschubbreite: 4,2 mm
Panel Thickness: 4.2 mm

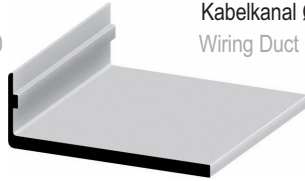


Abdeckprofil 14
Cover Profile 14

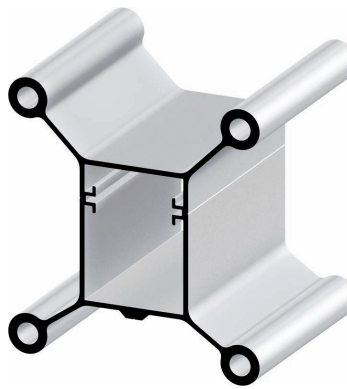
Kabelkanal 42 x 60
Wiring Duct 42 x 60



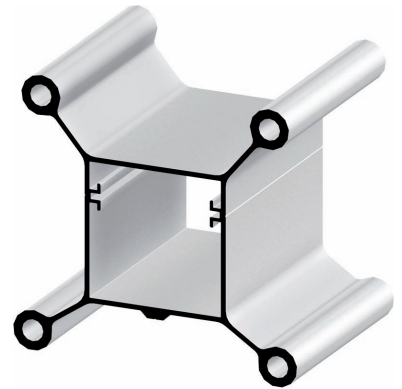
Kabelkanal Ø27
Wiring Duct Ø27



Türschlossprofil
Door Jam Profile

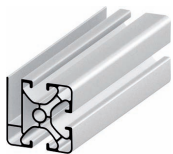


Stellfußprofil 60 x 80
Mounting Foot Profile 60 x 80

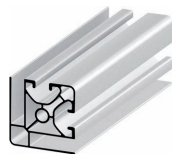


Stellfußprofil 80 x 80
Mounting Foot Profile 80 x 80

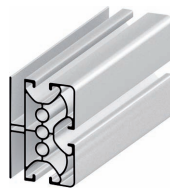
40 Wellengitterprofile 40
Mesh Guarding Profiles



Wellengitterprofil 40
Mesh Guarding Profile 40



Wellengitterprofil 40 90°
Mesh Guarding Profile 40 90°



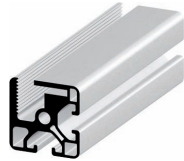
Wellengitterprofil 40 180°
Mesh Guarding Profile 40 180°

Einschubbreite: 7,8 mm
Panel Thickness: 7.8 mm

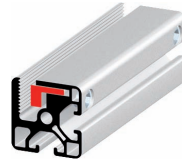
40 Klemmprofile 40
 Clamp Profiles 40



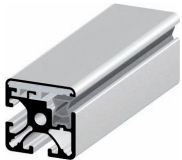
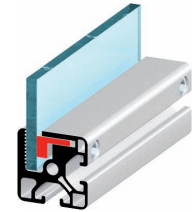
Klemmleiste 40
 Clamp Strip 40



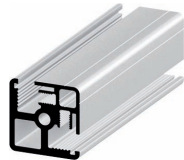
Klemmprofil 40
 Clamp Profile 40



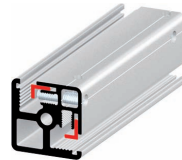
Klemmprofil 40, komplett
 Clamp Profile 40, complete



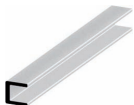
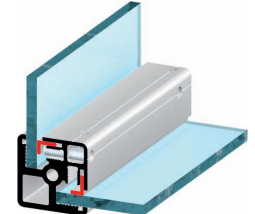
Rahmenprofil 40
 Frame Profile 40



Klemmprofil 40 90°
 Clamp Profile 40 90°



Klemmprofil 40 180°, komplett
 Clamp Profile 40 180°, complete



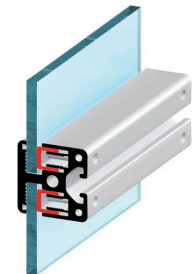
Klemmleiste 40 180°
 Clamp strip 40 180°



Klemmprofil 40 180°
 Clamp Profile 40 180°



Klemmprofil 40 90°, komplett
 Clamp Profile 40 90°, complete



30 Klemmprofile 30
 Clamp Profiles 30



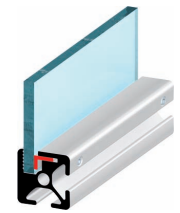
Klemmleiste 30
 Clamp Strip 30



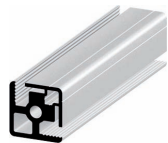
Klemmprofil 30 midi
 Clamp Profile 30 midi



Klemmprofil 30 midi, komplett
 Clamp Profile 30, complete



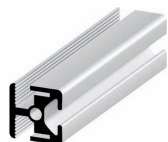
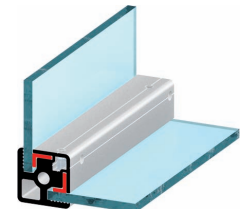
Klemmprofil 18x32
 Clamp Profile 18x32



Klemmprofil 30 90° midi
 Clamp Profile 30 90° midi



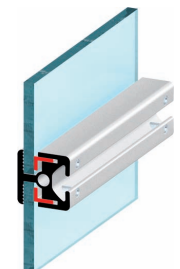
Klemmprofil 30 90° midi, komplett
 Clamp Profile 30 90°, complete



Klemmprofil 30 180° midi
 Clamp Profile 30 180° midi



Klemmprofil 30 180° midi, komplett
 Clamp Profile 30 180°, complete



20 Klemmprofile 20
Clamp Profiles 20



Klemmprofil 20 mini
Clamp Profile 20 mini



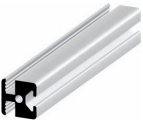
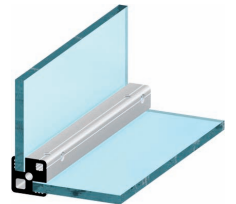
Klemmprofil 20 mini, komplett
Clamp Profile 20 mini, complete



Klemmprofil 20 90° mini
Clamp Profile 20 90° mini



Klemmprofil 20 90° mini, komplett
Clamp Profile 20 90° mini, complete



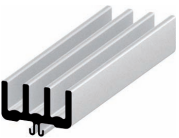
Klemmprofil 20 180° mini
Clamp Profile 20 180° mini



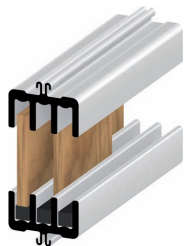
Klemmprofil 20 180° mini, komplett
Clamp Profile 20 180° mini, complete



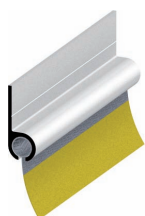
40 Schiebetürprofil 40, Kederprofil
Sliding Door Profile 40, Tent Profile



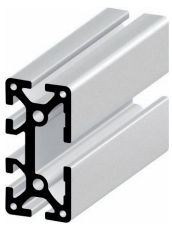
Schiebetürprofil 40
Sliding Door Profile 40



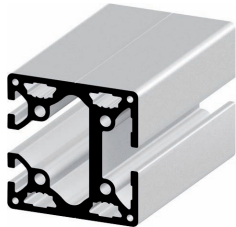
Kederprofil
Tent Profile



40 Offene Profile 40
Open Profiles 40



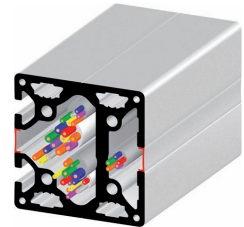
40 x 80 offen
40 x 80 open



80 x 80 offen
80 x 80 open



Abdeckprofil 14
Cover Profile 14



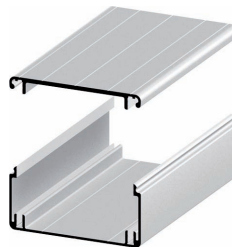
40 Kabelkanäle
Wiring Ducts



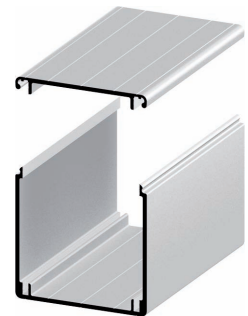
Kabelkanal 16 x 40
Wiring Duct 16 x 40



Kabelkanal 40 x 40
Wiring Duct 40 x 40



Kabelkanal 40 x 80
Wiring Duct 40 x 80

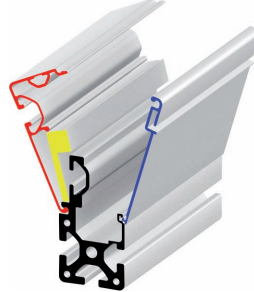
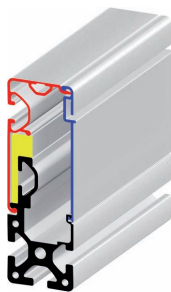
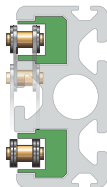


Kabelkanal 80 x 80
Wiring Duct 80 x 80

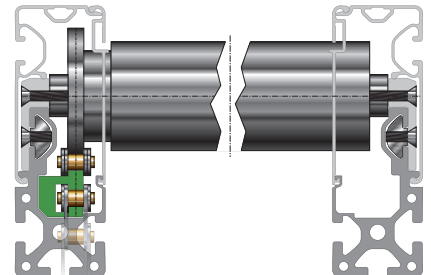
40 Rollenbahnprofile
Roller Conveyor Profiles



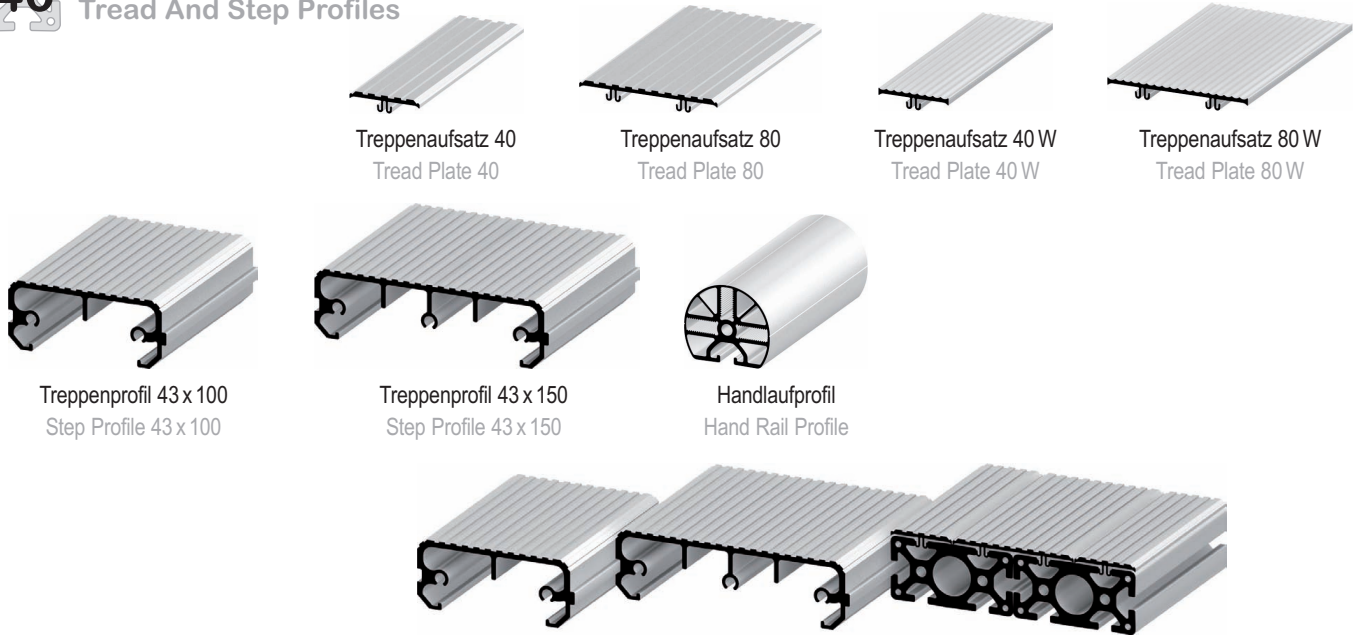
Kettenführungsprofil 41 x 80
Chain Guide Profile 41 x 80



Rollenbahnprofil 40 x 120
Roller Conveyor Profile 40 x 120



40 Treppenprofile
Tread And Step Profiles



Treppenaufsatz 40
Tread Plate 40

Treppenaufsatz 80
Tread Plate 80

Treppenaufsatz 40 W
Tread Plate 40 W

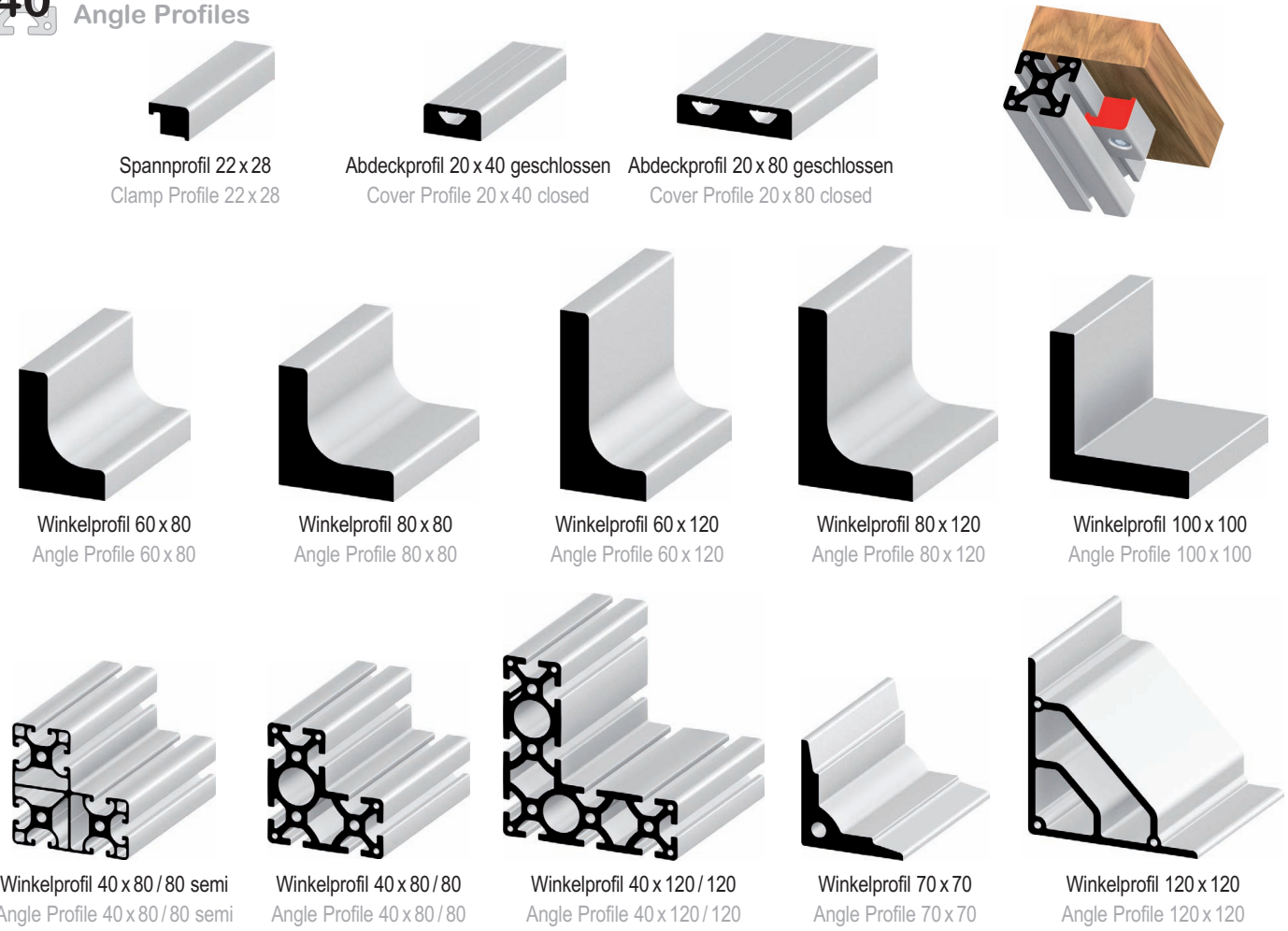
Treppenaufsatz 80 W
Tread Plate 80 W

Treppenprofil 43 x 100
Step Profile 43 x 100

Treppenprofil 43 x 150
Step Profile 43 x 150

Handlaufprofil
Hand Rail Profile

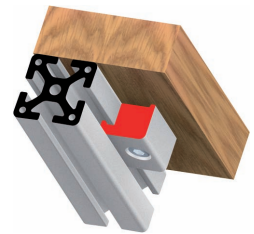
40 Winkelprofile
Angle Profiles



Spannprofil 22 x 28
Clamp Profile 22 x 28

Abdeckprofil 20 x 40 geschlossen
Cover Profile 20 x 40 closed

Abdeckprofil 20 x 80 geschlossen
Cover Profile 20 x 80 closed



Winkelprofil 60 x 80
Angle Profile 60 x 80

Winkelprofil 80 x 80
Angle Profile 80 x 80

Winkelprofil 60 x 120
Angle Profile 60 x 120

Winkelprofil 80 x 120
Angle Profile 80 x 120

Winkelprofil 100 x 100
Angle Profile 100 x 100

Winkelprofil 40 x 80 / 80 semi
Angle Profile 40 x 80 / 80 semi

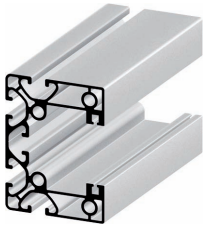
Winkelprofil 40 x 80 / 80
Angle Profile 40 x 80 / 80

Winkelprofil 40 x 120 / 120
Angle Profile 40 x 120 / 120

Winkelprofil 70 x 70
Angle Profile 70 x 70

Winkelprofil 120 x 120
Angle Profile 120 x 120

40 Rolltorprofile
Roller Door Profiles



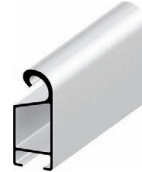
Seitenführungsprofil
Side Track Profile



Anschlussprofil
Connector Profile



Rolltorprofil
Roller Door Profile



Abschlussprofil
End Profile



Anschlussprofil 10
Connector Profile 10



Rolltorprofil 10 x 40
Roller Door Pr. 10 x 40



Abschlussprofil 10
End Profile 10

40 Tischprofile
Table Profiles



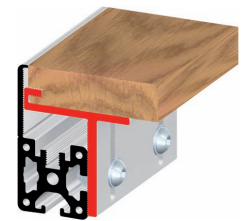
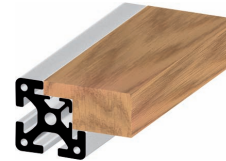
Tischprofil 40 x 40
Table Profile 40 x 40



Tischprofil 40 x 80
Table Profile 40 x 80



Halteleiste Tischprofil
Support Rail For Table Profile



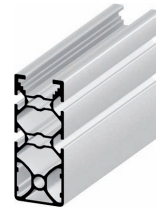
30 Schrankprofile 30
Cabinet Profiles 30



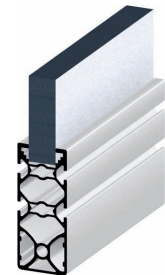
Schrankprofil 30 x 52 5N
Cabinet Profile 30 x 52 5N



Schrankprofil 30 x 52 3N
Cabinet Profile 30 x 52 3N



Schrankprofil 30 x 74 5N
Cabinet Profile 30 x 74 5N

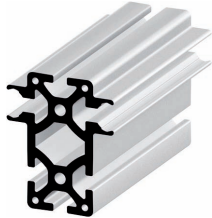


Griffeistenprofil 30 x 40
Handle Strip 30 x 40

40 Profile Lineartechnik 16
Profiles Linear Actuator System 16



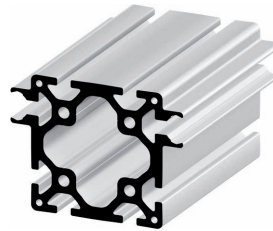
Führungsprofil 16 40x40
Track Profile 16 40x40



Führungsprofil 16 40x80/40
Track Profile 16 40x80/40



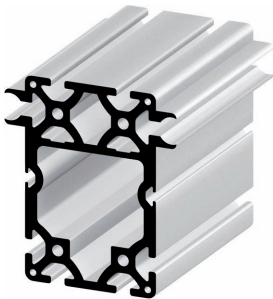
Führungsprofil 16 40x80/80
Track Profile 16 40x80/80



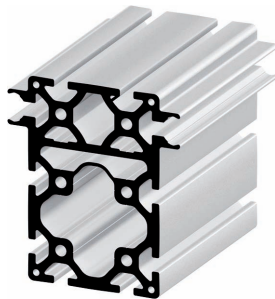
Führungsprofil 16 80x80
Track Profile 16 80x80



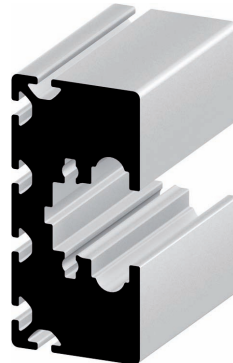
Führungsprofil 16 80x80 offen
Track Profile 16 80x80 open



Führungsprofil 16 80x120
Track Profile 16 80x120



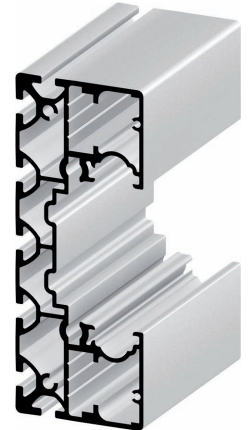
Führungsprofil 16 80x120 8N
Track Profile 16 80x120 8N



Laufwagenprofil 16 160x78
Carriage Profile 16 160x78



Laufwagenprofil 16 200x78
Carriage Profile 16 200x78

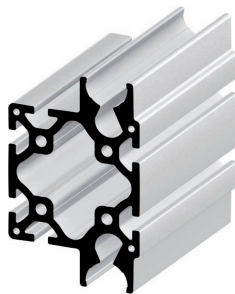


Laufwagenprofil 16 200x78 sl
Carriage Profile 16 200x78 sl

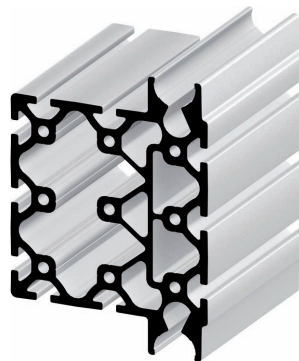
40 Führungsprofile 25
Track Profiles 25



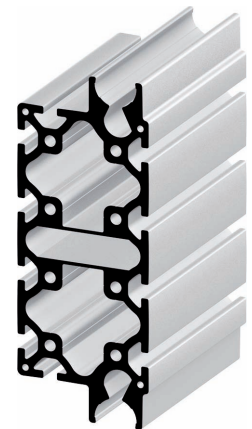
Führungsprofil 25 40x40
Track Profile 25 40x40



Führungsprofil 25 80x80
Track Profile 25 80x80



Führungsprofil 25 120x120
Track Profile 25 120x120

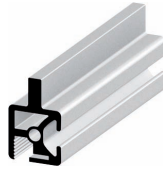


Führungsprofil 25 80x160
Track Profile 25 80x160

30 C-Führungen 30 / 43
C-Tracks 30 / 43



Doppelaufwagen C 30/43
Double Carriage Profile C 30/43



Klemmprofil 30 C 30/43
Clamp Profile 30 C 30/43



Führungsprofil C 30/43
Track Profile C 30/43



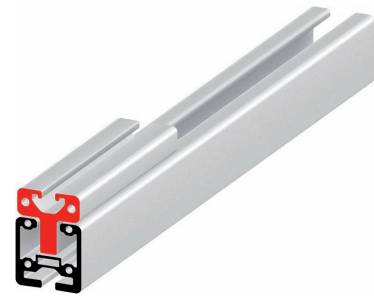
40 C-Führungen 40 / 57
C-Tracks 40 / 57



Doppelaufwagen C 40/57
Double Carriage Profile C 40/57



Führungsprofil C 40/57
Track Profile C 40/57



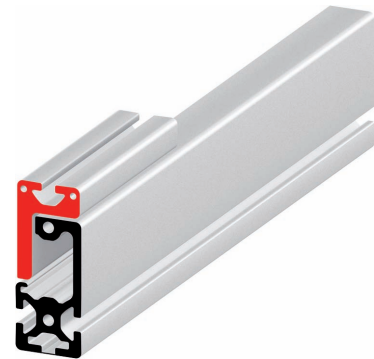
40 C-Führungen 40 / 100
C-Tracks 40 / 100



Führungsprofil C 40/100
Track Profile C 40/100



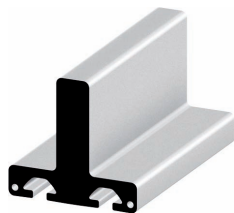
Führungsprofil C 40/100
Track Profile C 40/100



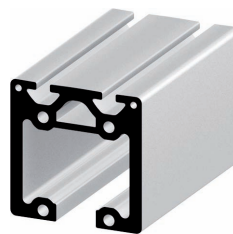
40 C-Führungen 80 / 100
C-Tracks 80 / 100



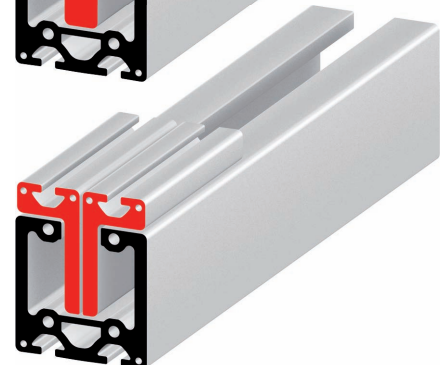
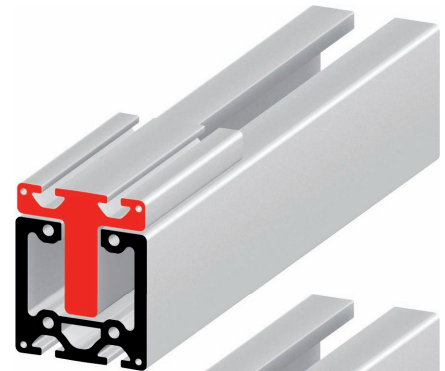
Einzelaufwagen C 80/100
Carriage Profile C 80/100



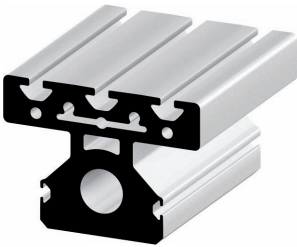
Doppelaufwagen C 80/100
Double Carriage Profile C 80/100



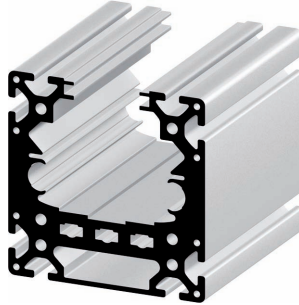
Führungsprofil C 80/100
Track Profile C 80/100



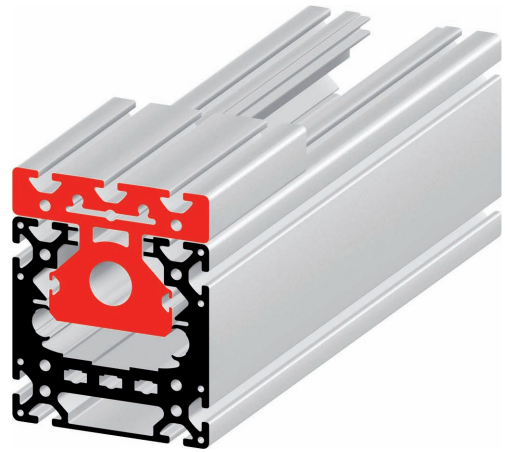
40 Innenliegende Führungen 120
Internal Drive Systems 120



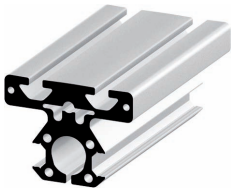
Laufwagenprofil 120 x 120
Carriage Profile 120 x 120



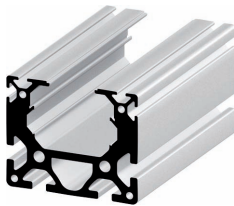
Führungsprofil 120 x 120
Track Profile 120 x 120



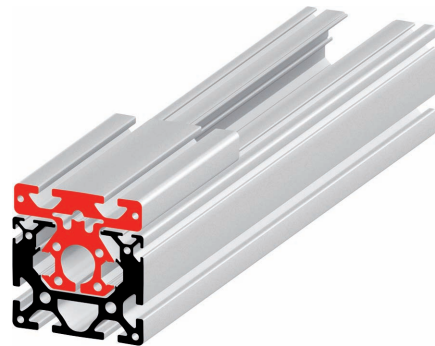
40 Innenliegende Führung 80 / 85
Internal Drive System 80 / 85



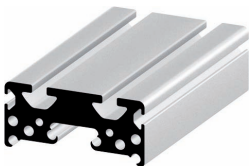
Laufwagen 80 x 85
Carriage Profile 80 x 85



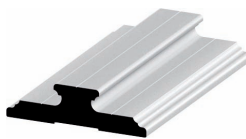
Führungsprofil 80 x 85
Track Profile 80 x 85



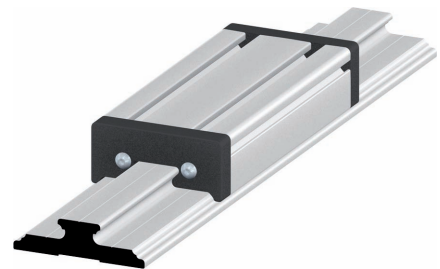
40 Kugelumlauf- / Gleitführungsprofile
Recirculating Ball / Glider Slide Profiles



Schlittenprofil
Carriage Profile



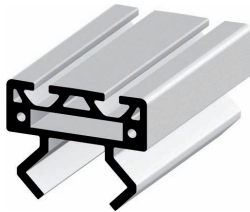
Schienenprofil
Guide Rail Profile



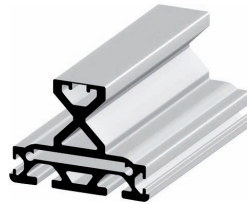
40 Innenliegende Führungen 80 / 90
Internal Drive Systems 80 / 90



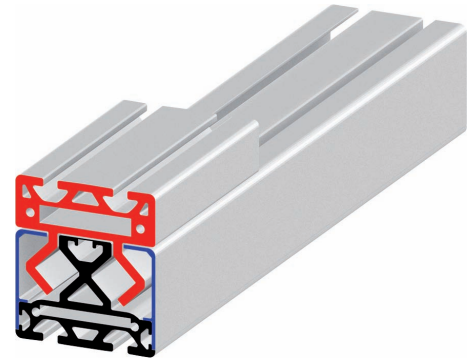
Abdeckprofil 60 x 80
Cover Profile 60 x 80



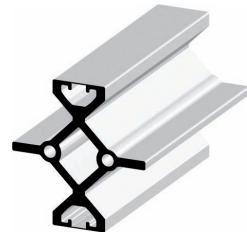
Laufwagenprofil 80 / 90
Carriage Profile 80 / 90



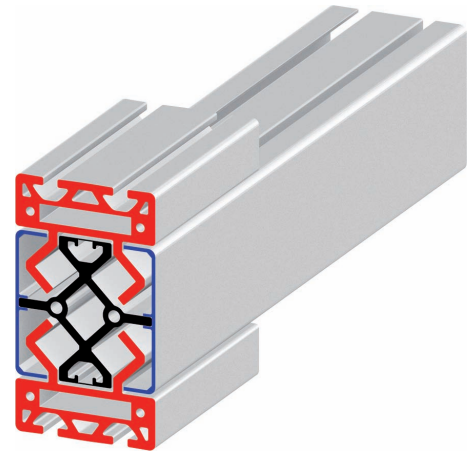
Führungsprofil 60 x 80
Track Profile 60 x 80



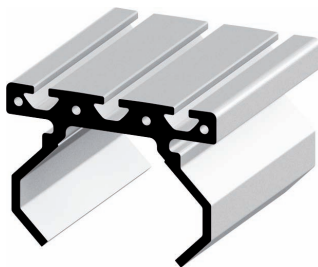
Abdeckprofil 80
Cover Profile 80



Doppelführungsprofil 80 x 80
Double Track Profile 80 x 80



40 Innenliegende Führungen 120 / 120
Internal Drive Systems 120 / 120



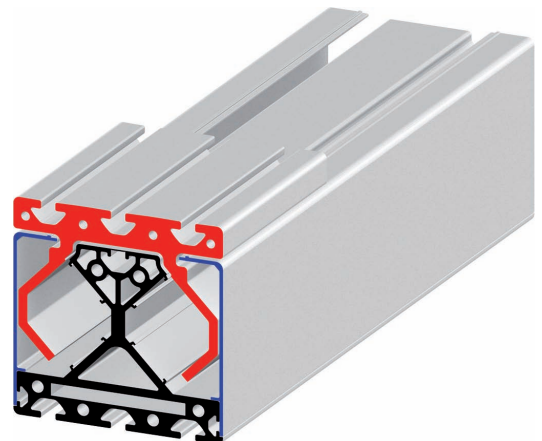
Laufwagenprofil 120
Carriage Profile 120



Abdeckprofil 100 x 120
Cover Profile 100 x 120



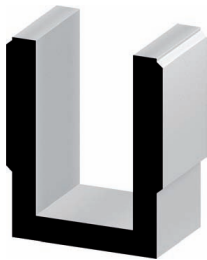
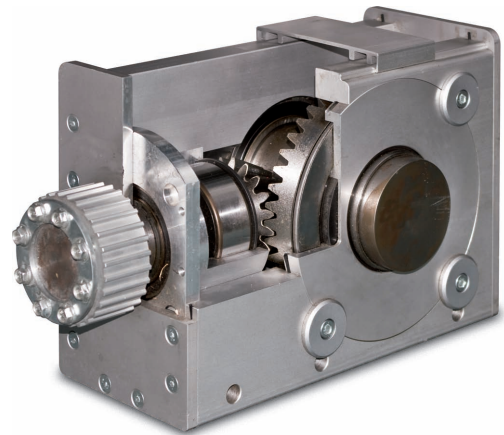
Führungsprofil 100 x 120
Track Profile 100 x 120



Umlenkeinheit, Getriebe
Return Unit, Gearbox



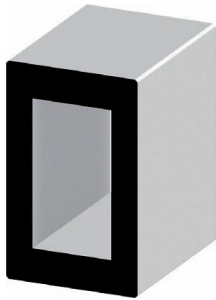
Abdeckprofil Getriebe
Cover Profile Gearbox Housing



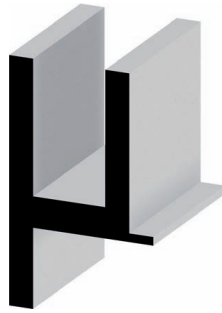
U-Profil Halterung
U-Profile Mounting 80



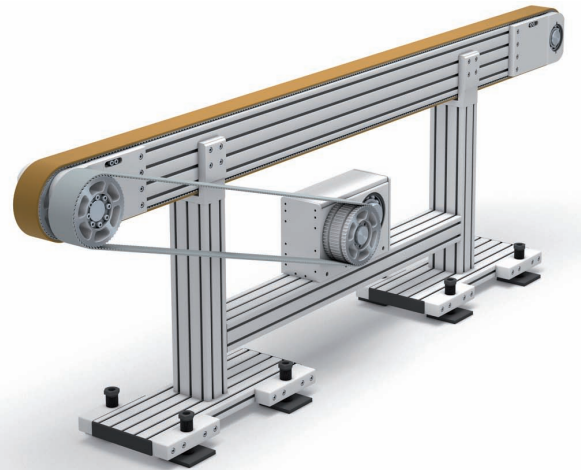
U-Profil Getriebe
U-Profile Gearbox Housing



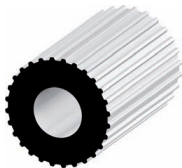
Umlenkeinheit, Unterteil
Return Unit, bottom



Umlenkeinheit, Oberteil
Return Unit, top



Zahnscheibenprofile
Timing Pulley Profiles



Zahnscheibenprofil P 28 AT 10
Timing Pulley Profile P 28 AT 10



Zahnscheibenprofil P 53 AT 10
Timing Pulley Profile P 53 AT 10



Klemmplattenprofil 35 AT 10
Clamp Plate Profile 35 AT 10



Klemmplattenprofil 160 AT 10
Clamp Plate Profile 160 AT 10

1.5 1.0 Inch Profile
Inch Profiles



1.5" x 1.5"



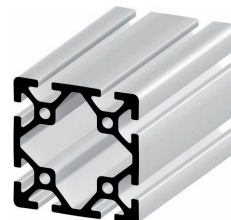
1.5" x 1.5" light



1.5" x 3.0"



1.5" x 3.0" light

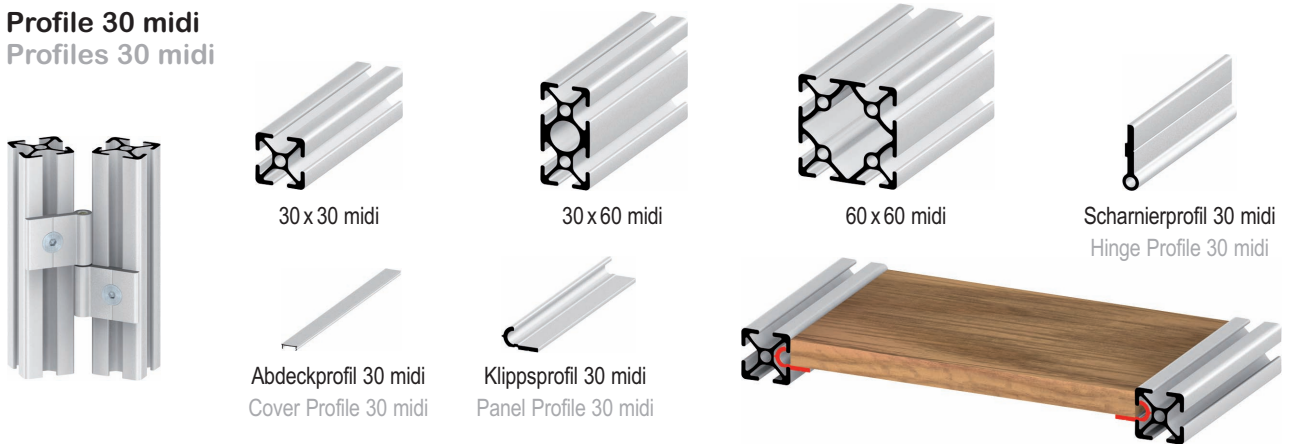


3.0" x 3.0"

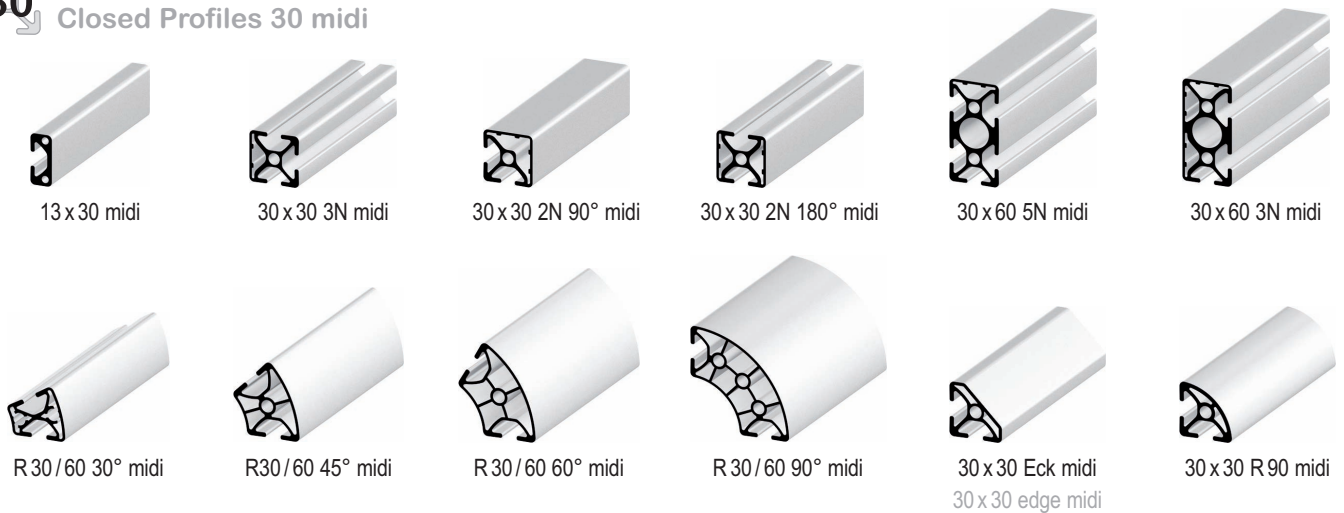


1.0" x 1.0" light

30 Profile 30 midi
Profiles 30 midi



30 Geschlossene Profile 30 midi
Closed Profiles 30 midi



20 Profile 20
Profiles 20

