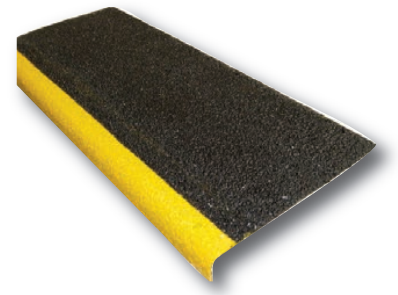




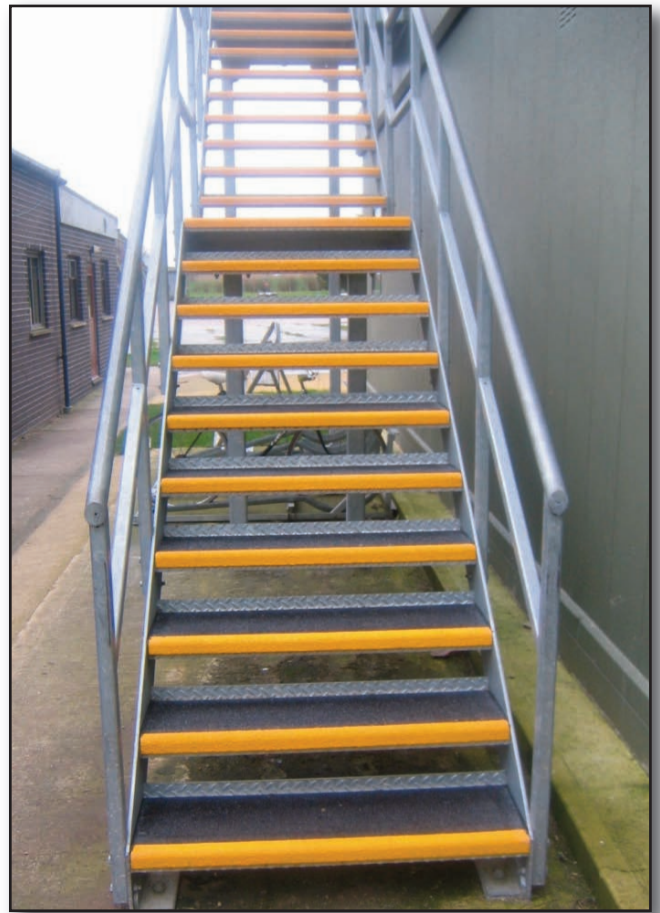
Anglia Composites
Making The World A Safer Place

TreadGrip Anti-Slip Tread Covers



Fibreglass Gratings
Anti-Slip Floor Sheets
Ladder Rung Covers
Fibreglass Ladders
Work Platforms
Riser Shaft Flooring
Pultruded Profiles
Handrail Systems

Disabled Ramps
Stair Nosings
Safety Gates
Walkways
Stairs & Steps
Trench Covers
Mouldings
Tread Covers



Anti-Slip Tread Covers are a simple and cost effective method of providing an almost instant anti-slip surface to any stairway whatever the condition of the stairs. Tread covers are extremely durable as a result of a hard wearing quartz grit surface. They have a contrasting nosing for greater visibility and can be cut to any size free of charge.

Internal and external adhesives are available to complete your installation. Tread covers can also be drilled and countersunk free of charge if mechanical fixing is required.



Amazing slip resistance

Corrosion resistant

Fast and easy installation

Cost effective

Chemical resistant

Fire resistant

Cut to any size

Hard wearing

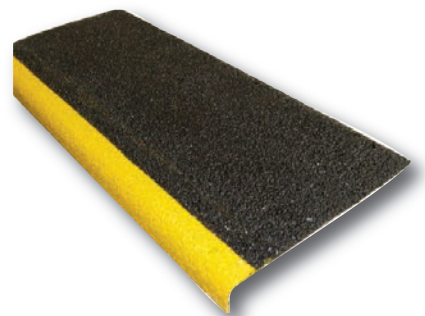


Large sheets of gritted plate are available for landing areas etc. Tread covers conform to BS7976-2 2002 slip resistance test. Our tread covers and plate have achieved a rating considered to be 'better than excellent'.

Can be fixed to steel, concrete or wood instantly using our adhesives.

A nationwide installation service is available if required. If you require cutting this can be performed free of charge but when measuring please allow a 2mm all round fitting allowance. The 'going' of the tread is the internal dimension of the cut tread cover.

Tread covers can be cut to any size up to a maximum 3000mm long x 300mm wide. Landing areas can be cut up to a maximum size of 2440mm x 1220mm. The nosing is 40mm deep.



Installation Guide

Apply Adhesive



Before installation make sure the stair surface is clean, dry and free from any loose material. If you are fixing to concrete steps that are badly worn it may be necessary to effect minor repairs.. Installation is improved if the surface is reasonably flat and smooth.

Apply adhesive in large dabs or beads paying particular attention to the edges.

Position The Cover



When you have spread the adhesive give the tread cover a light sanding to the underside of the tread cover. This will help the adhesive get a good key.

Set the cover into place by bedding it in. Apply pressure evenly over the entire tread. Can be walked on after just 6 hours in warm weather. In cold conditions it is best to leave overnight.

Seal Edges



The edges may be sealed if required with a standard silicone sealant. This will halt excessive moisture ingression. A variety of adhesives are available.

The amount of adhesive you require depends on the size of the cover and also the condition of the surface they are being bonded to. As a general guide for a typical tread cover 1000mm x 250mm one 310ml tube will be sufficient for 4 covers.

Tread covers and landing areas are supplied cut to size but if you need to trim the covers on site then you can use a hard metal jigsaw blade or angle grinder. We can also drill and counter-sink (free of charge) holes if you prefer to use mechanical fixings. Many types of mechanical fixings are available from stock. Please call for advice.



Call our sales hotline now to place an order or get expert technical advice.

01787 377 322

Can also be purchased at our online shop www.compositeshop.co.uk

Anglia Composites - 01787 377 322 - info@angliacomposites.co.uk - www.angliacomposites.co.uk