



VERDERFLEX OEM

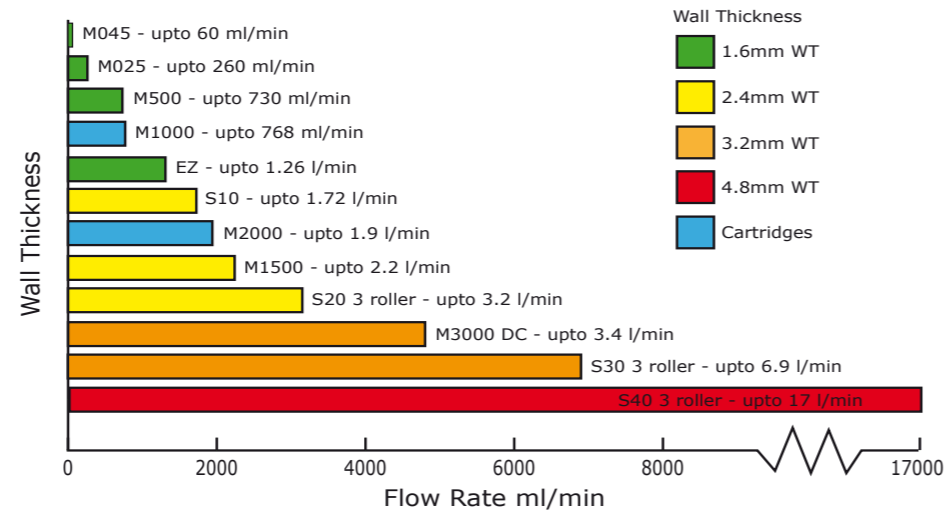
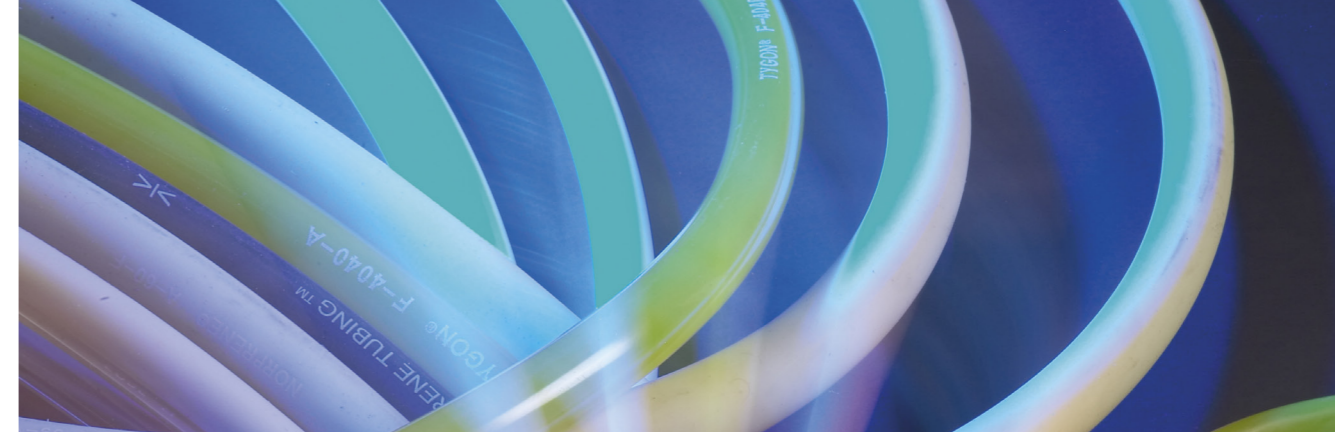
**Any questions?** You may still have questions and/or comments after reading this brochure. Please feel free to contact us on +44 (0)1924 221 020. You can also respond via email to [info@verderflex.com](mailto:info@verderflex.com). For more information about Verderflex please visit our website [www.verderflex.com](http://www.verderflex.com)

Overview



# Verderflex OEM

Verderflex® OEM pumps are compact, have long life tubing and are easy to maintain, with quick change tube systems to keep maintenance time to an absolute minimum. With flow rates ranging from 1.6 ml/min to 17 l/min, there is a Verderflex OEM pump for most low pressure pumping requirements.



## Verderflex Tube Selection

**Verderprene - Food and Medical Grade Tubing**  
This opaque, cream coloured tube is the most popular choice for tube pumps.

**Platinum Cured Silicone - For Higher Purity Food and Medical**  
Platinum cured Silicone is a translucent, odourless tubing with low residuals.

Other tubing materials including Tygon® and Viton® are available.

## Features and Benefits

Peristaltic pumps are excellent problem solving pumps, ideal when the product is particularly abrasive, corrosive, shear sensitive or viscous.

- Sterility by Design
- No Slip for Repeatable Dosing
- Dry running for Ease of Use
- No Seals
- Ideal for off Gassing Liquids
- Gentle Action for Sensitive Liquids
- Low Maintenance Costs
- Accurate Dosing
- Self Priming

### M045

Max. Flow rates	60 ml/min
Tube WT	1.6mm
Max. ID	4.0mm
Power Supply	12 & 24V DC & 230V 50Hz



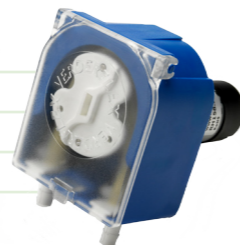
### EZ - Easy Tube Load

Max Flow rates	1,260 ml/min
Tube WT	1.6mm
Max. ID	8.0mm
Power Supply	12 & 24V DC



### M025

Max. Flow rates	260 ml/min
Tube WT	1.6mm
Max. ID	4.8mm
Power Supply	12 & 24V DC



### M1500

Max Flow rates	2,200 ml/min
Tube WT	2.4mm
Max. ID	8.0mm
Power Supply	12 & 24V DC & 230V 50Hz



### M500

Max. Flow rates	730 ml/min
Tube WT	1.6mm
Max. ID	4.8mm
Power Supply	12 & 24V DC 230V 50Hz



### M3000 DC

Max Flow rates	3,400 ml/min
Tube WT	3.2mm
Max. ID	9.6mm
Power Supply	24V DC



### M1000/M2000 - Cartridge

Max. Flow rates	1,900 ml/min
Tube Type	Snap on Cartridge
Max. ID	8.0mm
Power Supply	12V & 24V DC & 230V 50Hz



### S10 - S40 Rapid Tube Change

Max Flow rates	17 l/min
Tube WT	2.4mm, 3.2mm and 4.8mm
Max. ID	9.6mm, 15.9mm, 25.4mm
Power Supply	24V DC BLDC

