

Verderair VA 25 metallic



VA25A

VERDERAIR

Technical data		
Weight [kg]	Aluminium	10,5
	Stainless Steel with Polypropylene center	16,5
	Stainless Steel with cond. Polypropylene center	16,9
	Stainless Steel with Aluminium center	18,8
Suction lift [mwc]	dry	4,9
	wet	8,8
Temperature [°C]	Aluminium and Stainless Steel	4-66° *
Max. particle size [mm]		3,2

* upto 104°C with 2 piece PTFE diaphragms

CODE VA25 NO.1 NO.2 NO.3 NO.4 NO.5 NO.6 NO.7 NO.8

no.1 Pump Material

- A = Aluminium
- S = Stainless Steel

no.2 Centre section / Air valve

- A01 = Aluminium
- C01 = Conductive Polypropylene
- P01 = Polypropylene

no.3 Air valve monitoring

- A = Standard
- B = Pulse Count
- D = Remote

no.4 Fluid covers & manifolds

- A1 = Aluminium, standard ports, NPT
- A2 = Aluminium, standard ports, BSP
- S1 = Stainless Steel, standard ports, NPT
- S2 = Stainless Steel, standard ports, BSP

no.5 Check valve seats

- AC = Acetal
- AL = Aluminium
- BN = Buna-N
- FK = FKM Fluorelastomer (FKM)
- GE = Geolast
- PP = Polypropylene
- PV = PVDF
- SP = Santoprene
- SS = Stainless Steel 316
- TP = TPE (Hytrel)

no.6 Check valve balls

- AC = Acetal
- BN = Buna-N
- CR = Polychloroprene standard (Neoprene)
- CW = Polychloroprene weighted (Neoprene)
- FK = FKM Fluorelastomer (FKM)
- GE = Geolast
- PT = PTFE
- SP = Santoprene
- SS = Stainless Steel 316
- TP = TPE (Hytrel)

no.7 Diaphragms

- BN = Buna-N
- CO = Polychloroprene overmolded (Neoprene)
- FK = FKM Fluorelastomer (FKM)
- GE = Geolast
- PO = PTFE/EPDM overmolded
- PT = PTFE/EPDM 2-pieces
- TP = TPE (Hytrel)
- SP = Santoprene

no.8 Manifold o-rings

- = none
- PT = PTFE

EXAMPLE PUMP TYPE

VA25A A01A A2 AL PT PO PT

NOTE not all combinations are available

II 2 GD c IIC T4

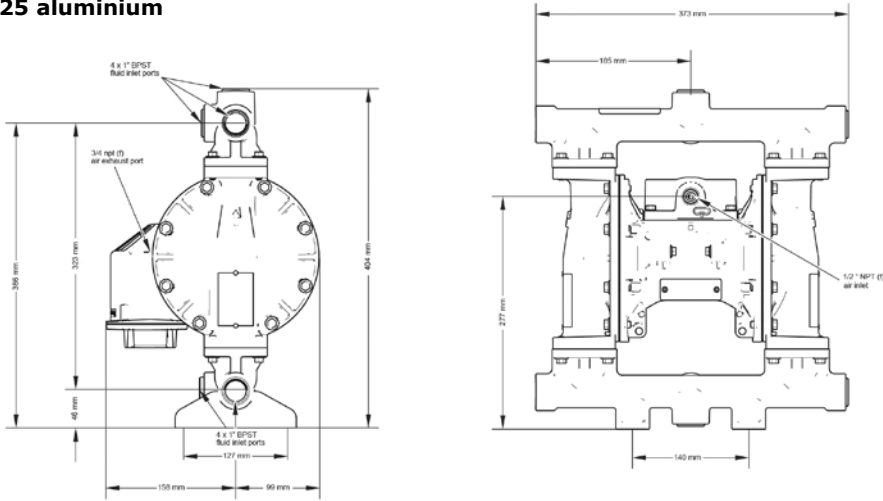


Verderair VA 25 metallic

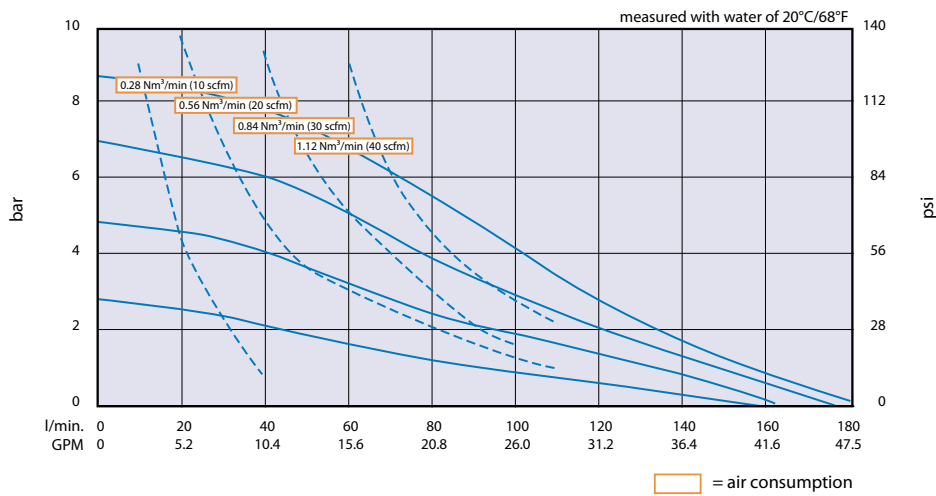
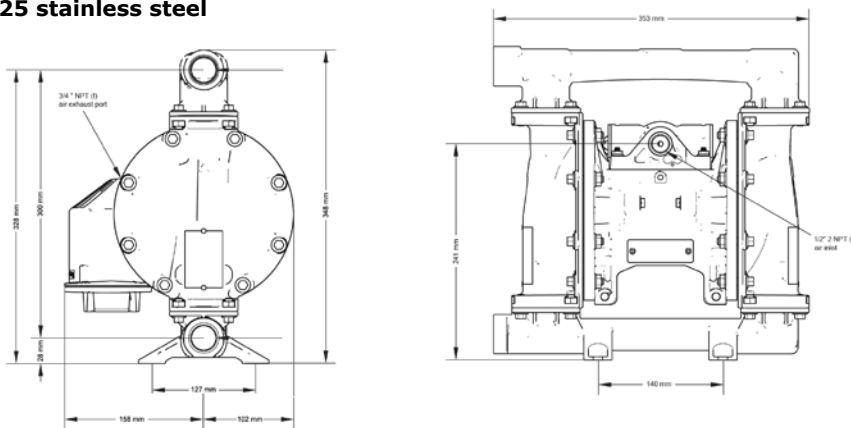
VA25A



VA 25 aluminium



VA 25 stainless steel



VA25met_Techno-Rev03-2012_(eu)

Find your local supplier at www.verderair.com

VERDER
passion for pumps