



FAST CLIP

ROLLED EDGE DUCTWORK SYSTEM

Unit 3 Victoria Road Industrial Estate, Off Victoria Road, Eccleshill, Bradford, BD2 2DD
Tel 0845 838 6166, Fax 0845 838 6155, web www.cades-ltd.co.uk, email extraction@cadestld.co.uk

Registered Number 32787325
Vat No 686 3594 81

INTRODUCTION

Contents	Page
Introduction	2
Specification	3
Products	4
Straight Duct (1500mm)	4
Fast Clips	5
Pressed Bends	6
Segment Bends	7
Taper	8
Taper Branch	9
Y Piece	10
Cut In Branch	11
Cap Ends	12
Square and Circular Sputnik	13
Foot Plate	14
Sweep Up Point	15
Nipples	16
Slips	17
O Rings	18
Split Straps	19
Blastgate Dampers	20
Elliptical Dampers	21
Access Doors	22
Cablemate	23
Additional Items	24
Enquiry/Order Form	25

Cades Ltd

Cades limited are a market leader in the design and supply of dust and fume extraction systems and a trusted supplier of all associated products.

The Cades rolled edge duct system with fast clip jointing system has been designed to offer a highly efficient and economical solutions for many applications.

Benefits of Clipped Duct

The easily installed system offers a wide range of benefits including:

- Components are easily clipped together and taken apart as required
- No screws or rivets required
- Easily connected to existing systems
- Damaged / worn sections can be easily replaced
- Easily altered to suit changing requirements
- Smooth internal surface reduces friction and therefore improves efficiency
- ISO9001:2000 Quality Assured
- Simplifies removal of sections for cleaning
- Durable galvanised finish



Diameter	Sheet Thickness	Type of Joint
100 mm	0.7 mm	6 mm Roll
125 mm	0.7 mm	6 mm Roll
140 mm	0.7 mm	6 mm Roll
160 mm	0.7 mm	6 mm Roll
180 mm	0.7 mm	8 mm Roll
200 mm	0.7 mm	8 mm Roll
250 mm	0.7 mm	8 mm Roll
315 mm	0.9 mm	10 mm Roll
350 mm	0.9 mm	10 mm Roll
400 mm	0.9 mm	10 mm Roll
450 mm	0.9 mm	10 mm Roll
500 mm	0.9 mm	10 mm Roll
560 mm	0.9 mm	10 mm Roll
600 mm	0.9 mm	10 mm Roll

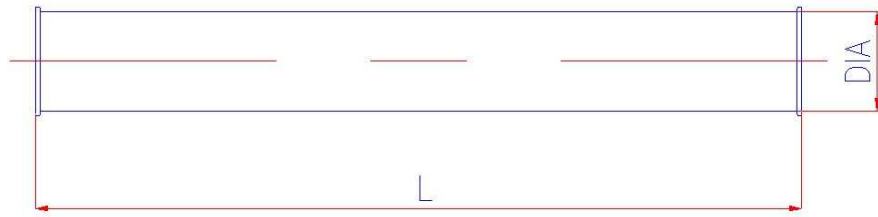
For larger diameters, please contact Cades Limited.

All material to be prime Galvanised Sheet.



NOTES

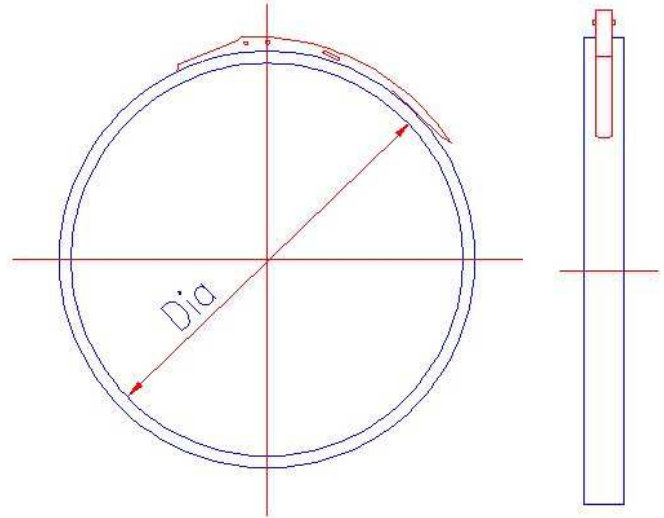
STRAIGHT DUCT (1500mm)



- ◆ Galvanised Steel Sheet
- ◆ Grooved Seam Construction
- ◆ Smooth internal finish suitable for Particle Handling
- ◆ Rolled edge for ease of assembly
- ◆ All diameters are ex-stock

Diameter (mm)	Nominal Length (mm)	Weight (Kg)
100	1500	3.22
125	1500	3.96
140	1500	4.41
160	1500	5.00
180	1500	5.59
200	1500	6.19
250	1500	7.67
315	1500	9.59
350	1500	10.63
400	1500	15.15
450	1500	16.99
500	1500	18.84
560	1500	21.07
600	1500	22.55

NOTES

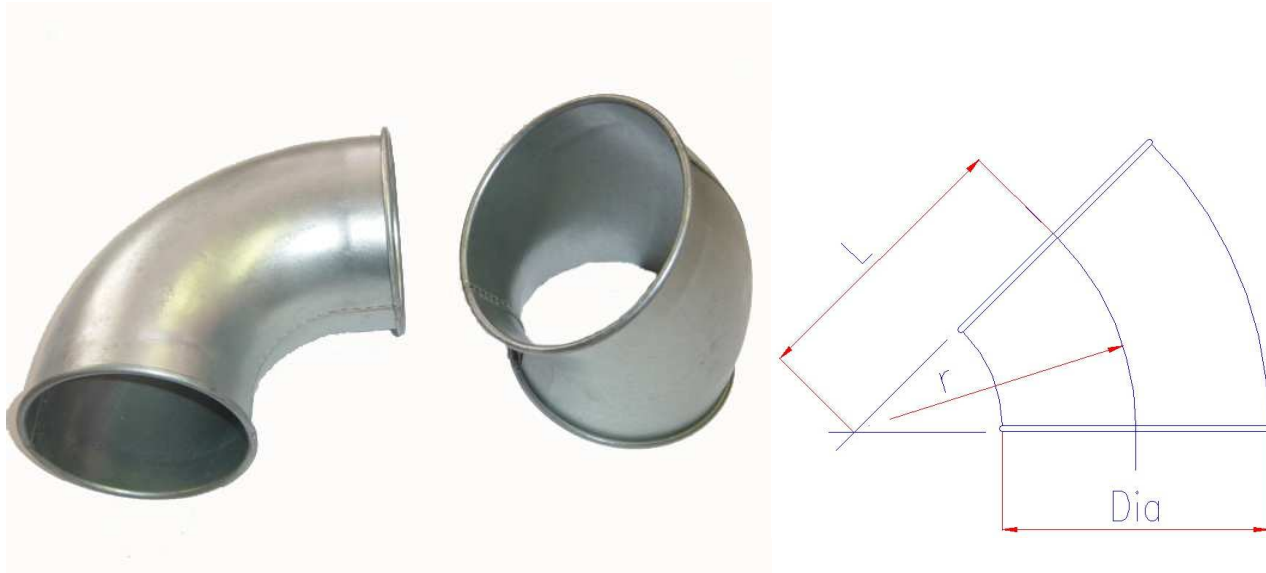


- ◆ One Clip required per Joint
- ◆ Complete with Locking T-Bar
- ◆ Seals when snaps shut

Diameter (mm)	Weight (Kg)
100	0.1
125	0.1
140	0.1
160	0.1
180	0.2
200	0.3
250	0.3
315	0.5
350	0.6
400	0.6
450	0.7
500	0.8
560	0.9
600	0.9

NOTES

PRESSED BENDS

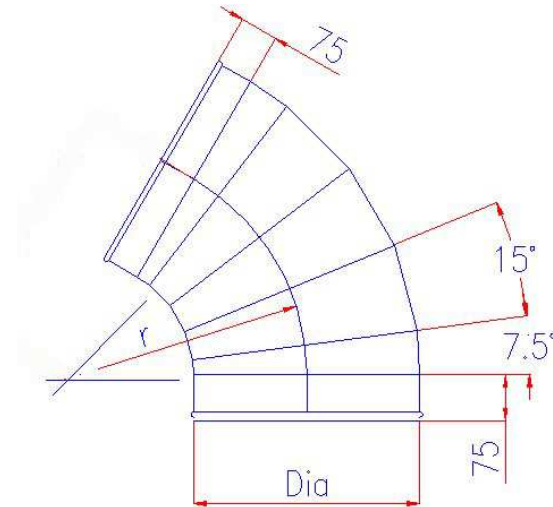


◆ Centreline radius = 1 x Diameter

Dia	90°		60°	
	L (mm)	Weight (Kg)	L (mm)	Weight (Kg)
100	130	0.4	151	0.4
125	155	0.6	177	0.5
140	165	0.8	194	0.6
160	190	1.0	212	0.8
180	205	1.2	283	1.0

Dia	45°		30°	
	L (mm)	Weight (Kg)	L (mm)	Weight (Kg)
100	169	0.3	207	0.3
125	197	0.4	239	0.3
140	215	0.4	257	0.4
160	233	0.6	272	0.5
180	254	0.7	295	0.6

NOTES



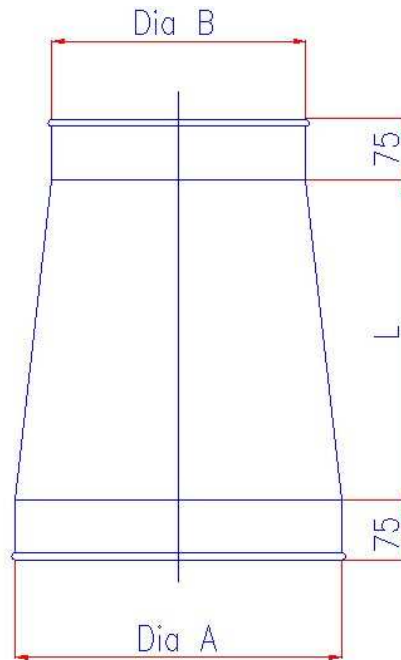
- ◆ Segmented radius = 1.5 x diameter
- ◆ Other radii available on request

	90°	60°
Dia (mm)	Weight (Kg)	Weight (Kg)
200	2.51	1.88
250	3.76	3.92
315	7.85	5.49
350	9.42	6.28
400	11.77	7.85
450	14.91	10.20
500	18.05	12.56
560	21.98	14.91
600	25.12	17.27
	5 x 2 Halves	3 x 2 Halves

	45°	30°
Dia (mm)	Weight (Kg)	Weight (Kg)
200	1.88	1.25
250	2.51	1.88
315	3.92	3.14
350	4.71	3.92
400	6.28	4.36
450	7.85	5.49
500	9.42	6.28
560	11.77	7.85
600	13.34	9.42
	2 x 2 Halves	1 x 2 Halves

NOTES

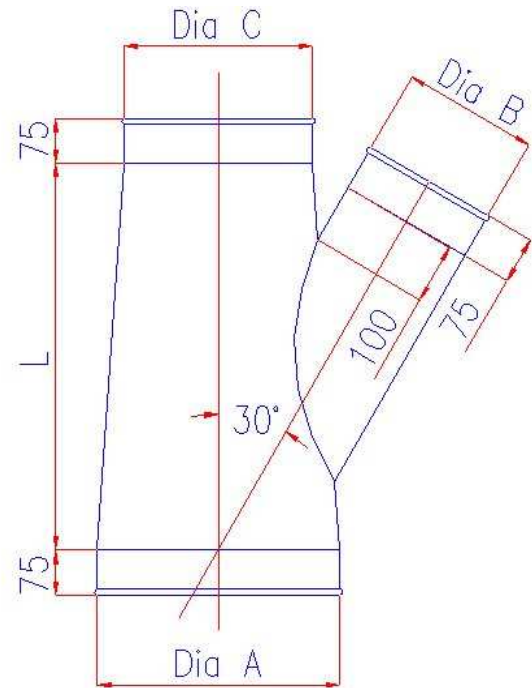
TAPER



- ◆ All Reducers are priced using the large Diameter A size
- ◆ When ordering please quote A and B Diameters
- ◆ Length = Dia A – Dia B + 100mm
- ◆ Minimum L = 100 mm

Diameter A (mm)	Weight (Kg)
100	0.27
125	0.37
140	0.39
160	0.48
180	0.58
200	0.67
250	1.10
315	2.05
350	2.15
400	2.97
450	3.62
500	4.35
560	4.81
600	5.45

NOTES

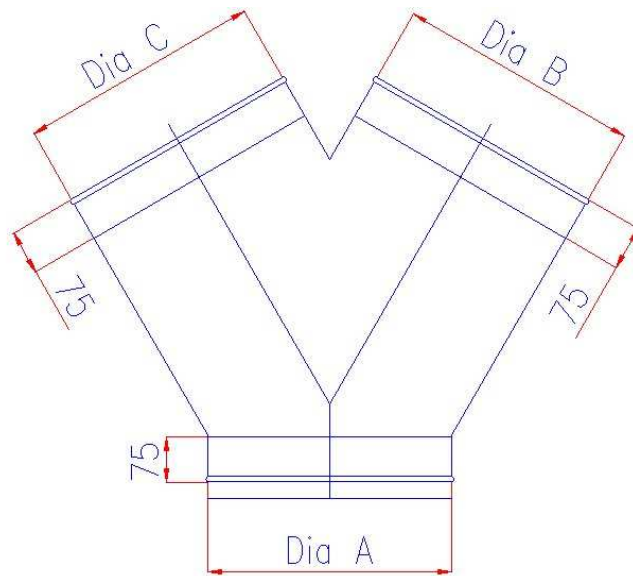


- ◆ All Reducers are priced using the large Diameter size
- ◆ $L = 2 \times \text{Dia B} + 160\text{mm}$
- ◆ Dia B cannot exceed Dia C
- ◆ When ordering please quote A, B and C Diameters

Diameter A (mm)	Length (mm)	Approx Weight (Kg)
100	360	0.64
125	410	1.59
140	440	2.11
160	480	2.70
180	520	3.42
200	560	4.23
250	660	5.14
315	790	9.03
350	860	12.39
400	990	17.27
450	1060	19.73
500	1160	27.61
560	1280	28.34
600	1360	34.02

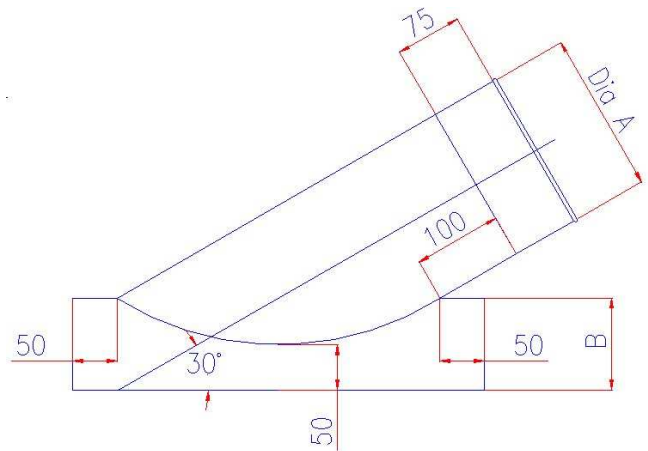
NOTES

Y PIECE



- ◆ Diameters B and C cannot exceed A
- ◆ When ordering, please quote A, B and C

NOTES

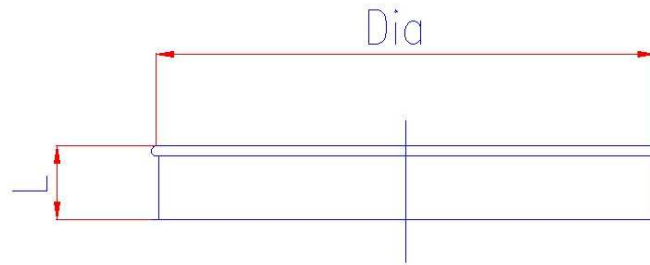


- ◆ Diameter A cannot exceed Diameter B
- ◆ When ordering please quote A and B diameters

Diameter A (mm)	Weight (Kg)
100	1.29
125	1.78
140	2.11
160	2.59
180	3.12
200	3.69
250	5.34
315	11.60
350	12.73
400	16.24
450	20.16
500	21.78
560	26.86
600	30.56

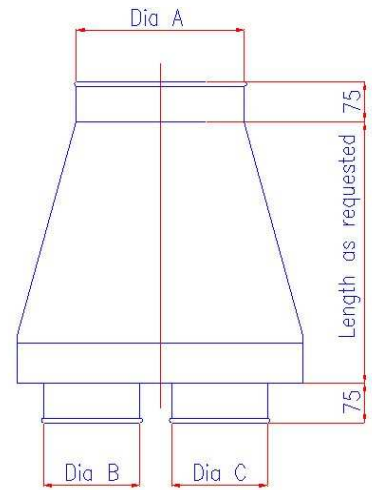
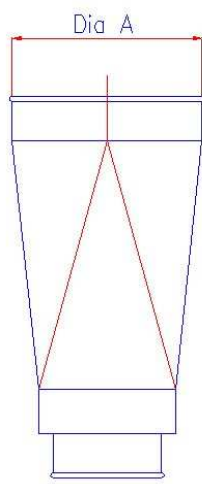
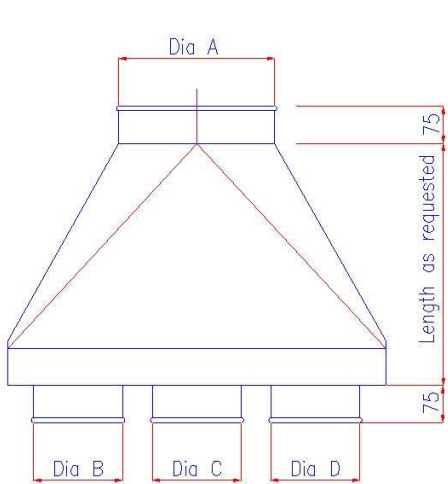
NOTES

CAP ENDS



Diameter (mm)	Length (mm)	Weight (Kg)
100	70	0.4
125	70	0.4
140	70	0.4
160	70	0.5
180	65	0.9
200	65	0.8
250	65	0.8
315	65	1.0
350	65	1.0
400	65	1.4
450	65	1.6
500	65	1.8
560	65	2.0
600	65	2.2

NOTES



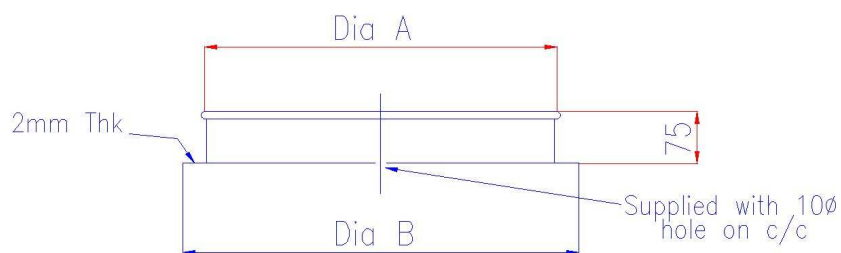
SQUARE SPUTNIK

CIRCULAR SPUTNIK

◆ Available with 2 to 8 spigots

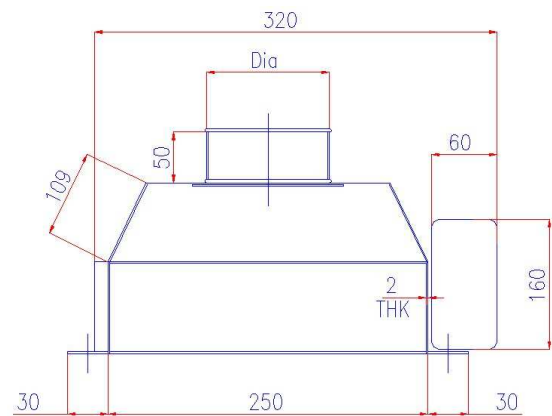
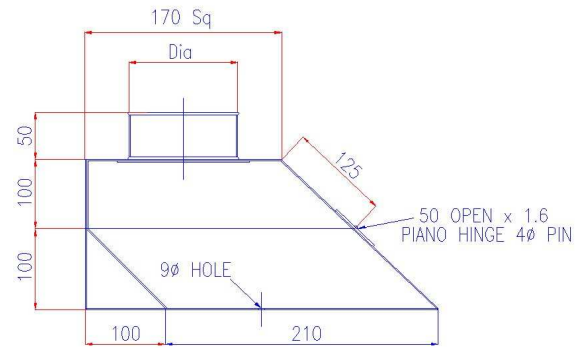
NOTES

FOOT PLATE



Diameter A (mm)	Diameter B (mm)
100	200
125	225
140	240
160	260
180	280
200	300
250	350
315	415
350	450
400	500
450	550
500	600
560	660
600	700

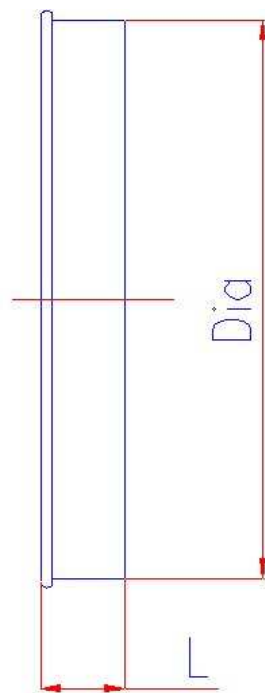
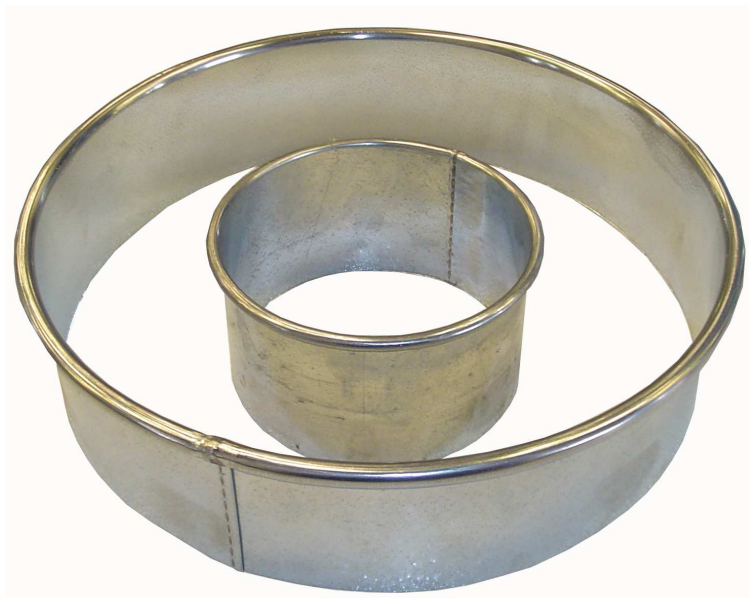
NOTES



Diameter (mm)
100
125
140
160

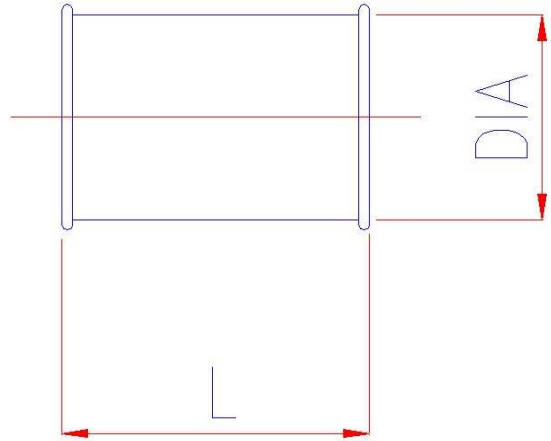
NOTES

NIPPLES



Diameter (mm)	Nominal Length (mm)	Weight (Kg)
100	80	0.1
125	80	0.2
140	80	0.2
160	80	0.3
180	80	0.3
200	80	0.3
250	80	0.4
315	80	0.5
350	80	0.5
400	80	0.7
450	80	0.8
500	80	0.9
560	80	1.0
600	80	1.1

NOTES

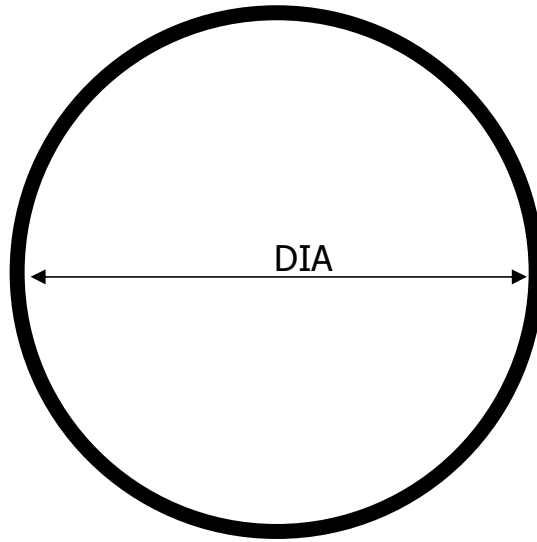


- ◆ Stitch welded
- ◆ Supplied with rubber O ring

Diameter	Length
100	300
125	300
140	300
160	300
180	300
200	300
250	300
315	300
350	300
400	300
450	300
500	300
560	300
600	300

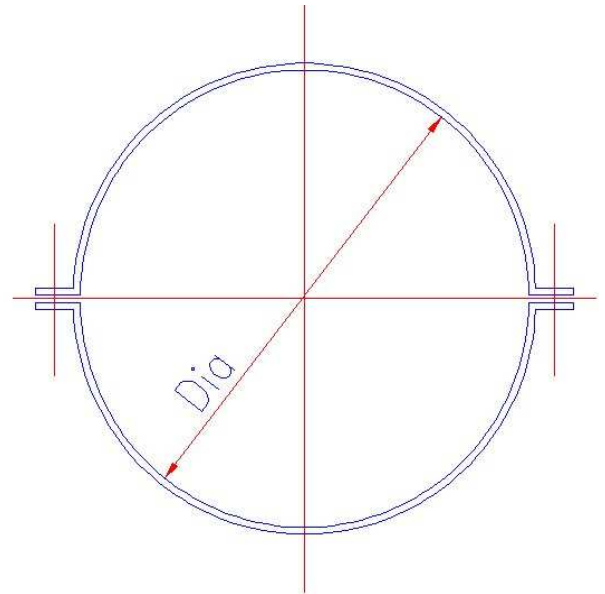
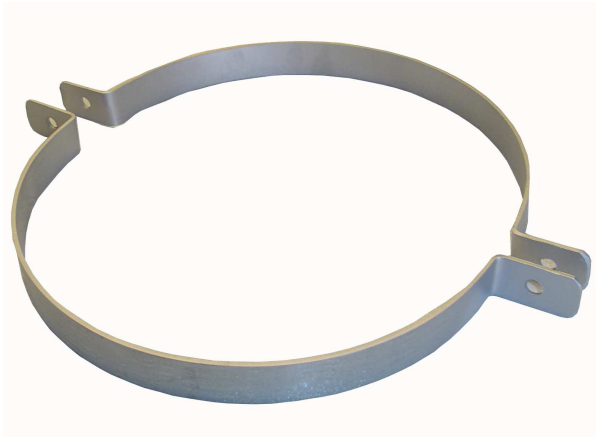
NOTES

O RINGS



Diameter (mm)	Thickness (mm)
100	6
125	6
140	6
160	6
180	8
200	8
250	8
315	10
350	10
400	10
450	10
500	10
560	10
600	10

NOTES

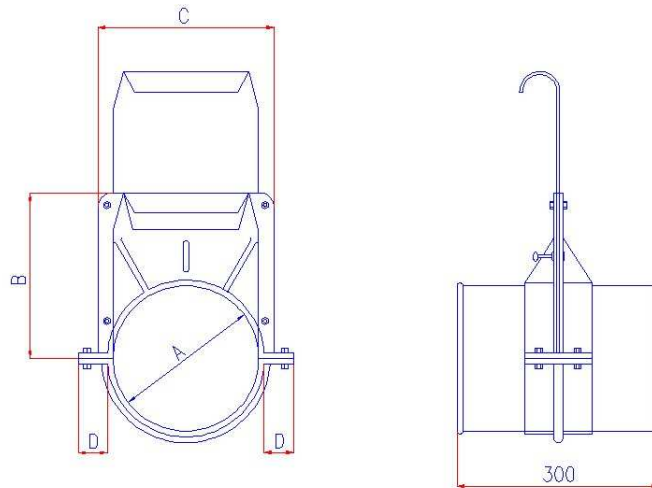


◆ c/w 10mm hole

Diameter (mm)	Size (mm)
100	30 x 2
125	30 x 2
140	30 x 2
160	30 x 2
180	30 x 2
200	30 x 2
250	30 x 2
315	30 x 2
350	30 x 2
400	30 x 2
450	30 x 2
500	30 x 2
560	30 x 2
600	30 x 2

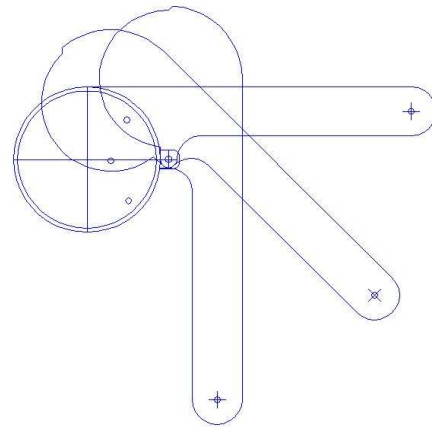
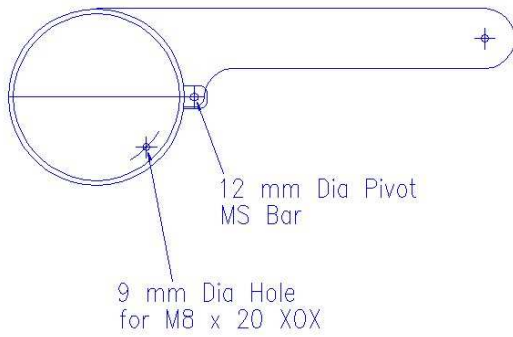
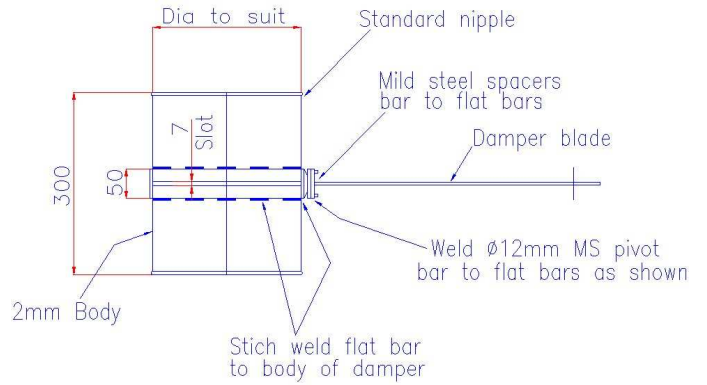
NOTES

BLASTGATE DAMPERS



Dia A (mm)	B (mm)	C (mm)	D (mm)
100	125	134	33
125	150	165	45
140	165	178	45
160	190	203	45
180	200	216	45
200	228	240	47
250	285	303	50

NOTES



Diameter
250
315
350
400
450
500

NOTES

ACCESS DOORS



Normal Access & General Maintenance
180MM X 80MM & 250MM X 150MM

Two Handed Maintenance Access
400MM X 300MM

Manhole Access
600MM X 450MM

An access door restraining harness system is also available on request.

RANGE OF DIAMETERS AVAILABLE									
NOTE, e.g. $\frac{100}{125}$ is one door size which covers duct diameters shown									
Hence a type B180 is to suit a 180 diameter duct. Duct diameters must be shown when ordering.									
TYPE A 180 x 80	<u>100 Dia</u> 125 Dia	<u>150 Dia</u> 160 Dia	<u>180 Dia</u> 200 Dia						
TYPE B 250 x 150	<u>150 Dia</u> 160 Dia	<u>180 Dia</u> 200 Dia	<u>200 Dia</u> 224 Dia	<u>250 Dia</u> 280 Dia	<u>300 Dia</u> 315 Dia	<u>350 Dia</u> 355 Dia	<u>400 Dia</u> 500 Dia	<u>560 Dia</u> 630 Dia	<u>710 Dia</u> 800 Dia
TYPE C 400 x 300	450 Dia	500 Dia	560 Dia	630 Dia	<u>710 Dia</u> 800 Dia	<u>900 Dia</u> 1000 Dia	<u>1120 Dia</u> 1250 Dia		
TYPE D 600 x 450	1000 Dia	1120 Dia	1250 Dia	1400 Dia	1600 Dia	1800 Dia	2000 Dia		

NOTES



Clutcher



Adjustment Tool



Wire Rope



Wire Rope Cutter

- ◆ Can be used on a variety of mechanical and electrical systems
- ◆ Wire and Clutcher sold separately
- ◆ Eliminates the need to stock pre-cut wire
- ◆ Tapered bore design for fast and easy installation
- ◆ Easily adjust hanging height by hand
- ◆ Extremely strong
- ◆ Offers a **5 to 1** safety factor
- ◆ Available in a variety of sizes for different weights
- ◆ Items can be hung at angles up to 60° from vertical
- ◆ Lightweight design reduces the risk of on-site accidents
- ◆ Aesthetically pleasing

CLUTCHER

Clutcher Part No	Corresponding Wire Rope	Working Load (Kg)	Clutcher Bag Qty	Bags per Box	Box Weight (Kg)
CL10	WR10	56	10	20	3.084
CL20	WR20	113	10	15	3.356
CL30	WR30	295	5	10	4.020
CL40	WR40	565	5	5	2.540

WIRE ROPE

Wire Rope Part No	Working Load (Kg)	Wire Rope Diameter	Spool Length (m)	Spool Weight (Kg)
WR10	56	2 mm	153	2.79
WR20	113	3.2 mm	153	6.49
WR30	295	4.8 mm	153	15.5
WR40	565	6 mm	153	25.0

WIRE ROPE CUTTER

Superior Strength
 Heavy Duty high carbon steel blades
 Spring loaded for easy operation
 For medium hard wire up to 4.8mm
 Cuts without burr
 Safety lock

ADJUSTMENT TOOL

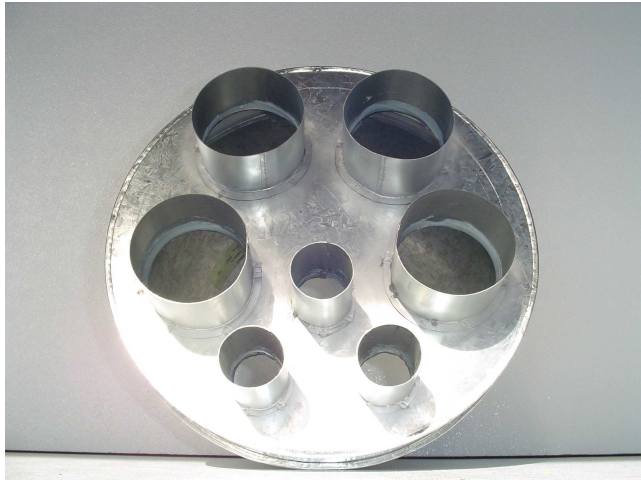
Special design to ease adjustment
 Soft grip handles for comfort
 Suitable for both CL10 and CL20
 Toothed grip to prevent slippage

NOTES

ADDITIONAL ITEMS

Various additional items are available or can be made to order.

Please contact us for details.



NOTES

PRODUCT	DETAILS	QTY
Straight Duct (1500mm)		
<i>Please state diameter</i>		
Fast Clips		
<i>Please state diameter</i>		
Pressed Bends		
<i>Please state diameter and angle</i>		
Segment Bends		
<i>Please state diameter and angle</i>		
Tapers		
<i>Please state dia A and B and length required</i>		
Taper Branch		
<i>Please state dia A and B and length required</i>		
Y Piece		
<i>Please state dia A, B and C</i>		
Cut In Branch		
<i>Please state dia A and B and length required</i>		
Cap Ends		
<i>Please state diameter</i>		
Square Sputnik		
<i>Please state dia A, number and dia of spigots</i>		
Circular Sputnik		
<i>Please state dia A, number and dia of spigots</i>		
Foot Plate		
<i>Please state diameter</i>		
Sweep Up Point		
<i>Please state diameter</i>		
Nipples		
<i>Please state diameter</i>		
Slips		
<i>Please state diameter</i>		
O Rings		
<i>Please state diameter</i>		
Split Straps		
<i>Please state diameter</i>		
Blastgate Damper		
<i>Please state diameter</i>		
Elliptical Damper		
<i>Please state diameter</i>		

www.cades-ltd.co.uk