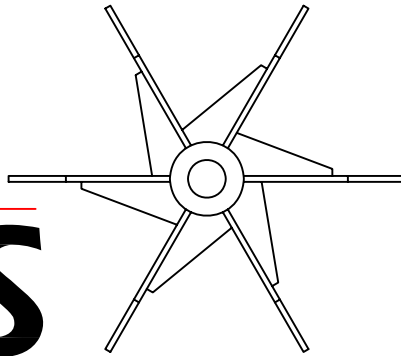




A.B. FANS



MANUFACTURERS OF INDUSTRIAL FANS



COMPANY PROFILE

TYPE 1245 BL-245, BELT-DRIVEN CENTRIFUGAL FAN UNIT.



A.B. Fan Services Ltd are a manufacturer and supplier of centrifugal and axial flow industrial fans.

Our extensive engineering experience allows us to produce high quality, high efficiency fan units.

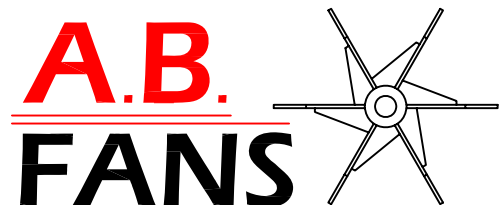
We also offer a full maintenance service including spherical roller bearing replacement, motor and vee belt drive changes.

With the latest schenk vibro balancing 41 equipment, we can offer both in house and on site dynamic balancing and diagnostic testing.

TYPE 1290 BL-245, DIRECT DRIVEN ACCOUSTIC INSULATED.

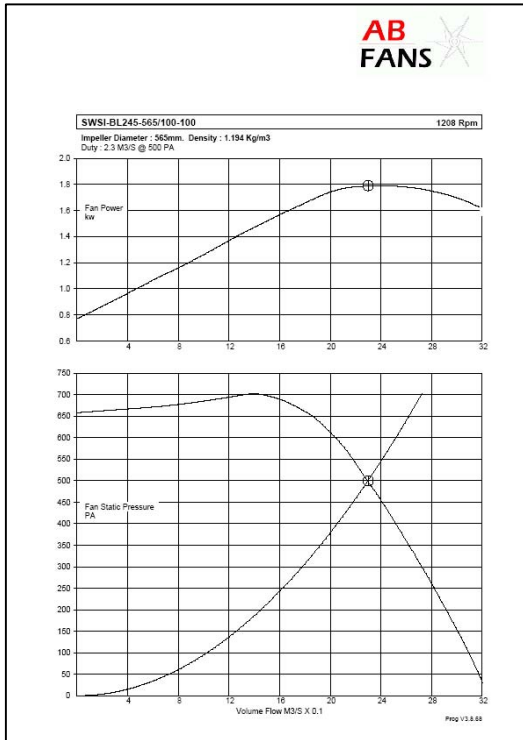


TYPE 650 BCP-108, DIRECT DRIVEN CENTRIFUGAL FAN UNITS.

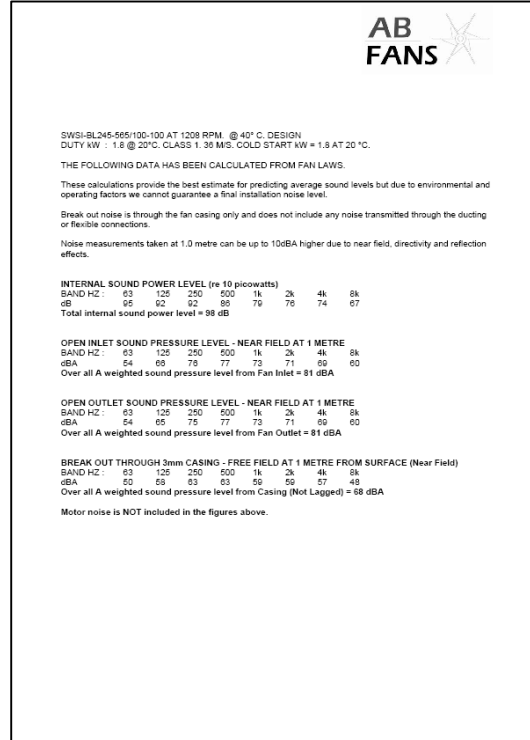


T: 01384 242156
F: 01384 458263
Email: sales@abfans.co.uk
Web: www.abfans.co.uk

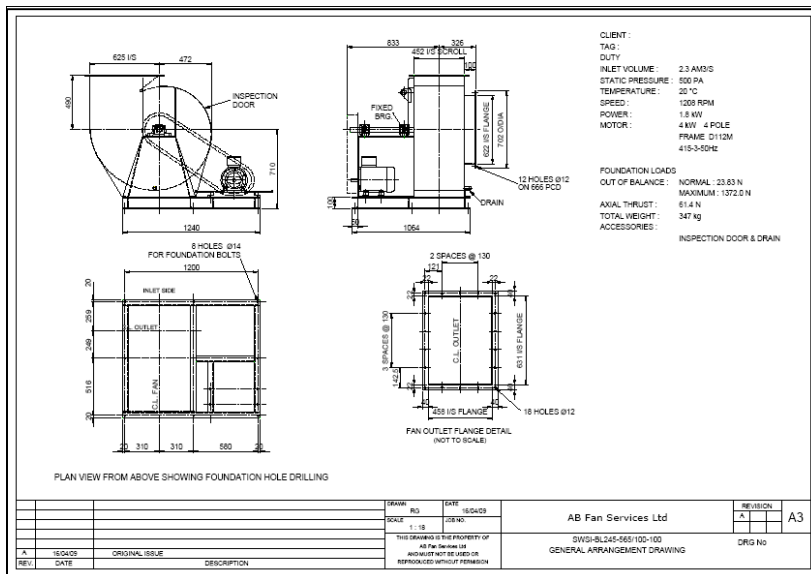
TECHNICAL INFO



Example of fan curve



Example of sound levels

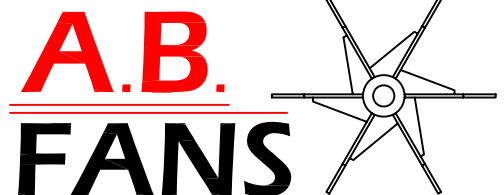


Example of general arrangement drawing

We select, design, manufacture and supply a wide range of centrifugal and axial flow fans for all types of applications including, material handling, high pressure, high volume, contaminated air and high temperature.

We manufacture in a range of materials including mild steel and stainless steel.

We design High Efficiency fans on the latest computerised selection programs which will supply GA drawings, curves and noise levels at quotation point.



STANDARD FAN RANGE



BL TYPE / BLP TYPE / BC 130 TYPE / BC 317 TYPE

Backward inclined impeller.
Will accept light dust loads.

Non - overloading characteristics.

Medium Volume - Medium Pressure
(0.2 m³/s - 50 m³/s) - (250 Pa - 6000 Pa)

RT 152 TYPE / RB164 TYPE

Radial Bladed impeller.

RT Heavy dust loads.
RB Heavy dust and chips.

Medium Volume - Medium - High Pressure
(0.1 m³/s - 30 m³/s) - (250 Pa - 8000 Pa)



BCP 108 TYPE / BCP 078 TYPE / Q TYPE / H TYPE

Backward inclined impeller.
Narrow width, High efficiency

High pressure blowers.

Low Volume - High Pressure
(0.1 m³/s - 8 m³/s) - (800 Pa - 15,000 Pa)

PB TYPE

Paddle bladed, radial impeller.

Heavy dust loads.
Material Handling, Woodwaste etc.

Medium Volume - Medium Pressure
(0.2 m³/s - 25 m³/s) - (250 Pa - 5000 Pa)

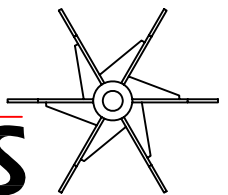


MV TYPE

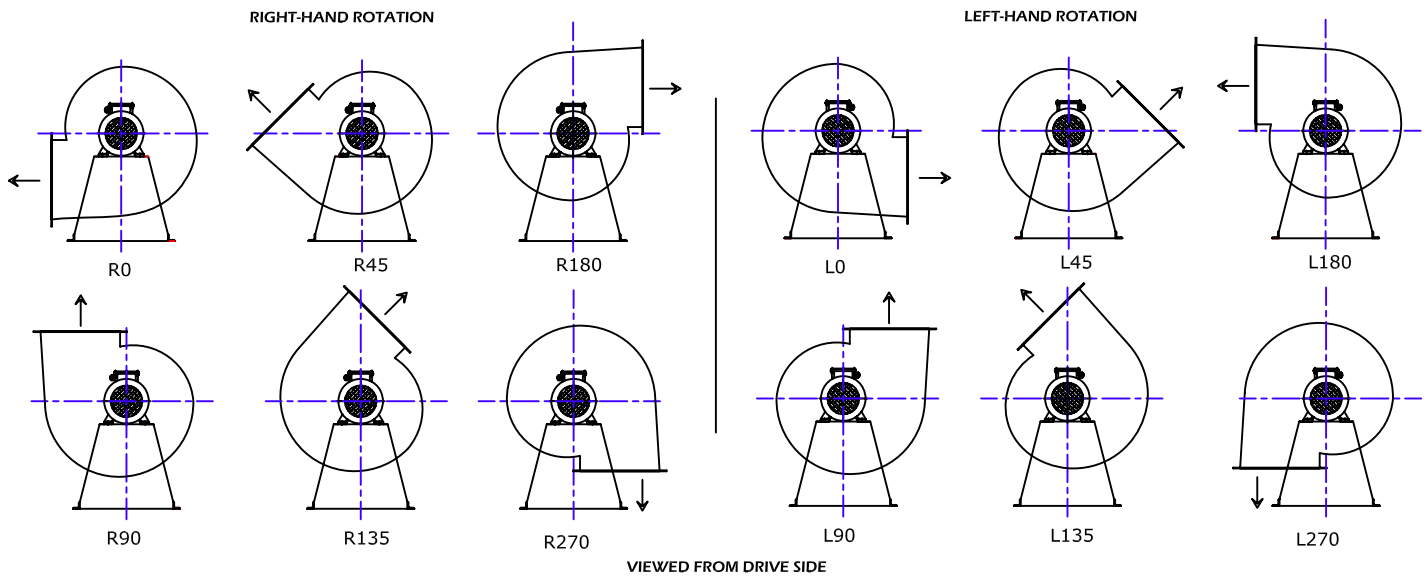
Forward curved impeller.

Light duty applications.
Quiet running.

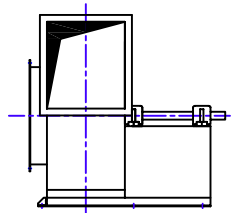
High Volume - Low Pressure
(0.5 m³/s - 60 m³/s) - (25 Pa - 1500 Pa)

A.B.
FANS 

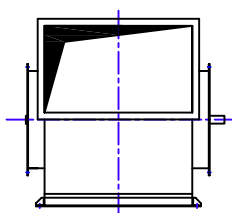
STANDARD FAN ARRANGEMENTS



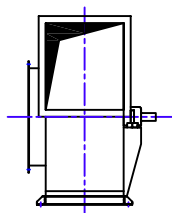
STANDARD FAN ARRANGEMENTS



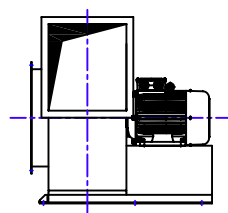
ARRANGEMENT '1'
General overhung pulley drive with bearings mounted on full depth pedestal.



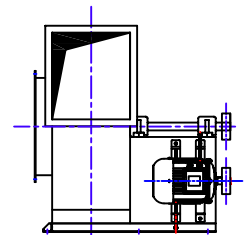
ARRANGEMENT '2'
Double width impeller mounted on its own shaft but situated between bearings. Both bearing's in air stream.



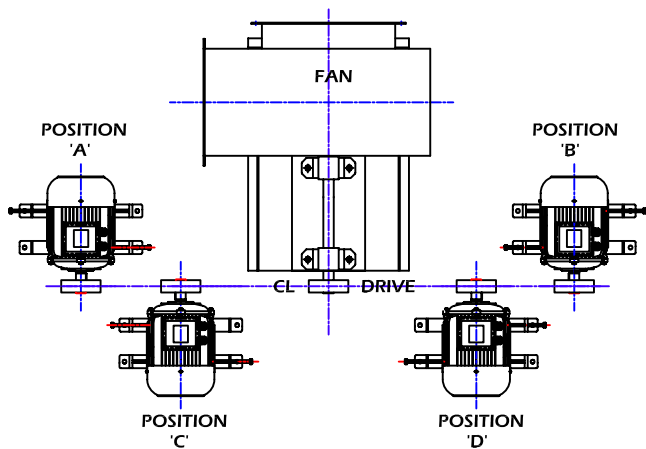
ARRANGEMENT '3'
Impeller mounted on its own shaft but situated between bearings to save space. one bearing in air stream.



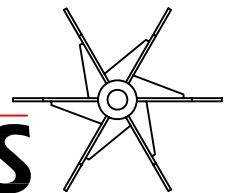
ARRANGEMENT '4'
Impeller directly mounted on motor shaft, motor mounted on full depth pedestal.



ARRANGEMENT '9'
Compact vee-belt drive unit saving space on foundation.

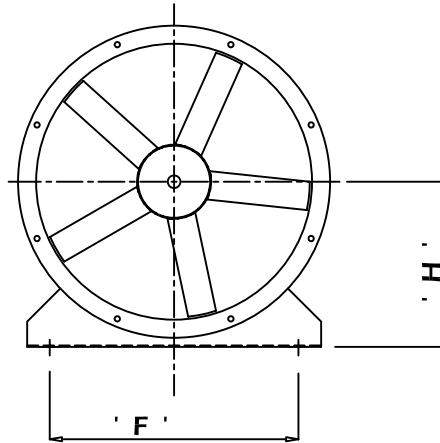
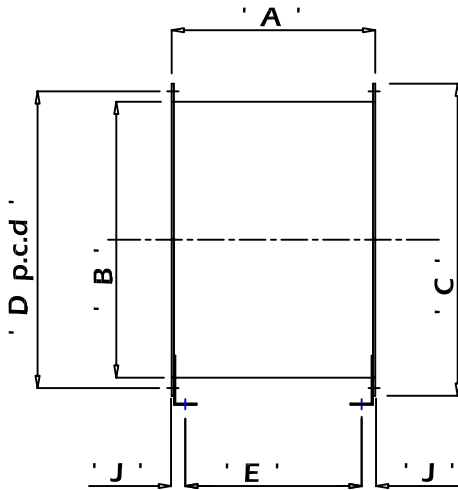


A.B.
FANS



MANUFACTURERS OF INDUSTRIAL FANS

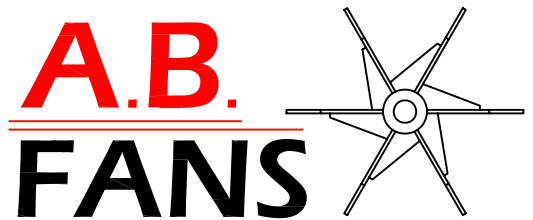
AXIAL FLOW FANS



| SIZE | A | B | C | D | E | No. OF HOLES | DIA | F | H | J |
|------|-----|-----|------|-----|-----|--------------|-----|-----|-----|----|
| 250 | 300 | 260 | 320 | 296 | 260 | 4 | 10 | 200 | 180 | 20 |
| 315 | 350 | 325 | 385 | 361 | 300 | 8 | 10 | 265 | 200 | 25 |
| 400 | 400 | 410 | 470 | 446 | 350 | 8 | 10 | 350 | 245 | 25 |
| 450 | 450 | 460 | 540 | 506 | 390 | 8 | 12 | 450 | 290 | 25 |
| 500 | 450 | 510 | 590 | 556 | 390 | 8 | 12 | 450 | 315 | 30 |
| 600 | 450 | 610 | 690 | 656 | 390 | 8 | 12 | 550 | 365 | 30 |
| 630 | 450 | 640 | 720 | 686 | 390 | 8 | 12 | 580 | 380 | 30 |
| 700 | 600 | 720 | 820 | 776 | 425 | 12 | 15 | 640 | 420 | 38 |
| 800 | 600 | 810 | 910 | 866 | 425 | 12 | 15 | 740 | 470 | 38 |
| 900 | 750 | 912 | 1012 | 968 | 674 | 12 | 15 | 820 | 550 | 38 |

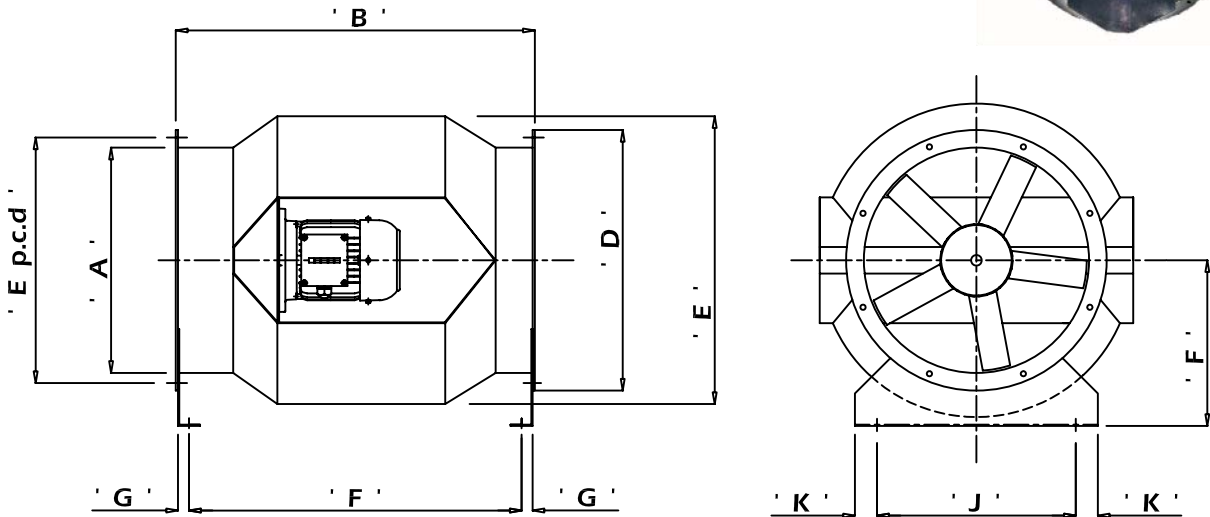
LARGER SIZES AVAILABLE PLEASE CONTACT OUR SALES TEAM.

FEET , ANTI-VIBRATION MOUNTINGS,
BACKING FLANGES AND
FLEXIBLE CONNECTIONS
ARE ALL AVAILABLE AS EXTRAS



MANUFACTURERS OF INDUSTRIAL FANS

BIFURCATED AXIAL FLOW FANS



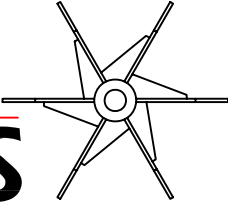
| SIZE | A | B | C | D | E | No. OF HOLES | DIA | F | G | H | J | K |
|------|------|------|------|------|------|--------------|-----|------|----|-----|-----|----|
| 250 | 260 | 610 | 380 | 320 | 296 | 4 | 10 | 560 | 25 | 210 | 200 | 50 |
| 315 | 325 | 610 | 460 | 385 | 361 | 8 | 10 | 550 | 30 | 250 | 265 | 50 |
| 400 | 410 | 685 | 540 | 470 | 446 | 8 | 10 | 625 | 30 | 290 | 350 | 50 |
| 450 | 460 | 685 | 610 | 540 | 506 | 8 | 10 | 625 | 30 | 325 | 350 | 50 |
| 500 | 510 | 760 | 710 | 590 | 556 | 8 | 12 | 700 | 30 | 375 | 450 | 50 |
| 630 | 640 | 810 | 810 | 720 | 686 | 8 | 12 | 750 | 30 | 425 | 580 | 50 |
| 710 | 720 | 965 | 970 | 820 | 776 | 12 | 15 | 905 | 30 | 505 | 640 | 50 |
| 800 | 810 | 1020 | 1100 | 910 | 866 | 12 | 15 | 951 | 35 | 570 | 740 | 50 |
| 900 | 912 | 1020 | 1220 | 1012 | 968 | 12 | 15 | 950 | 35 | 630 | 820 | 50 |
| 1000 | 1012 | 1100 | 1370 | 1112 | 1068 | 12 | 15 | 1020 | 40 | 705 | 920 | 50 |

LARGER SIZES AVAILABLE PLEASE CONTACT OUR SALES TEAM.

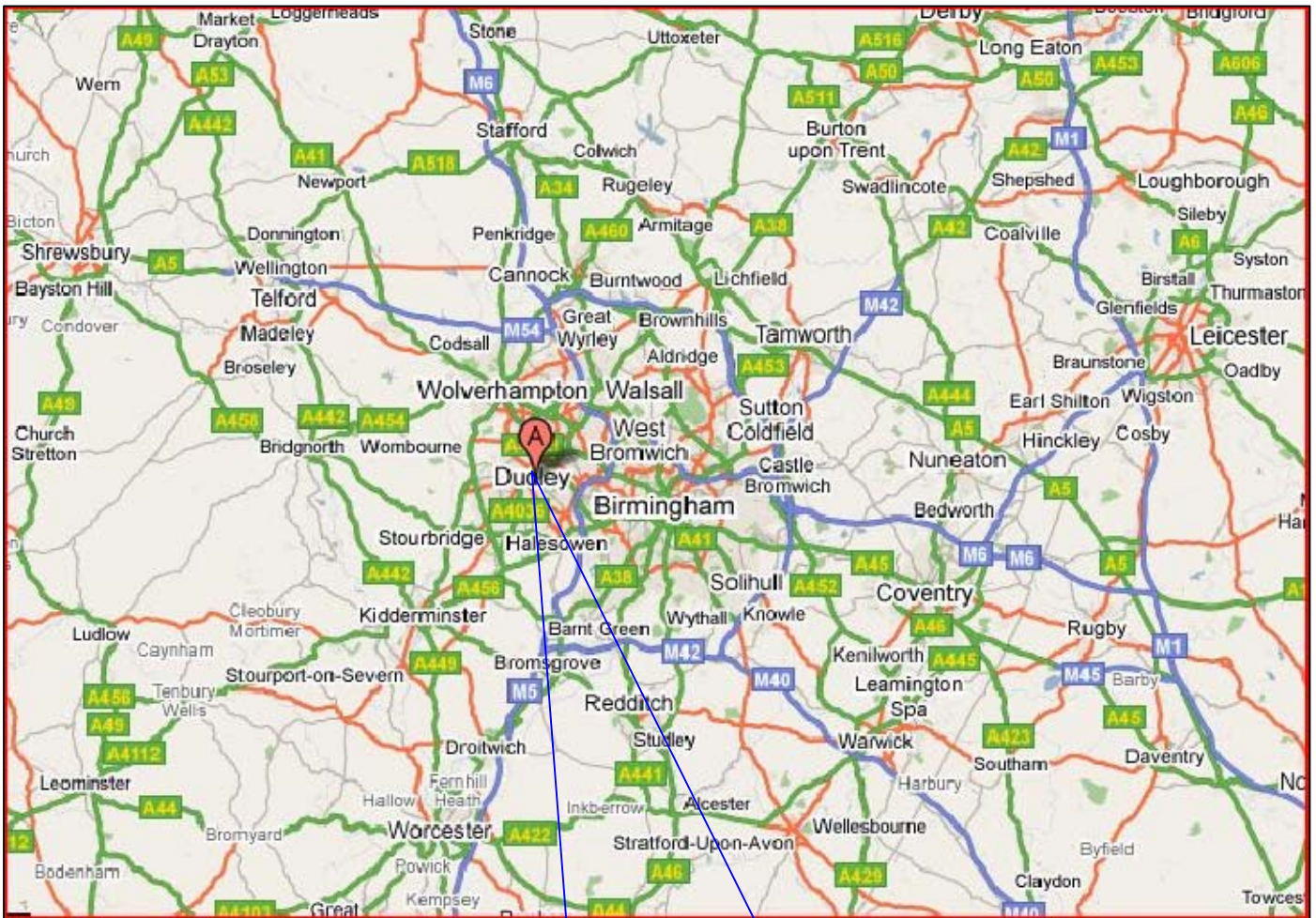
FEET , ANTI-VIBRATION MOUNTINGS,
BACKING FLANGES AND
FLEXIBLE CONNECTIONS
ARE ALL AVAILABLE AS EXTRAS



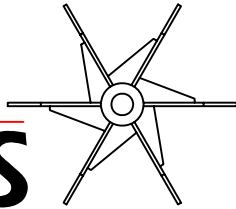
A.B.
FANS



MANUFACTURERS OF INDUSTRIAL FANS



A.B. **FANS**



MANUFACTURERS OF INDUSTRIAL FANS

**UNIT G1,
DUDLEY CENTAL TRADING EST.
SHAW ROAD
DUDLEY
WEST MIDLANDS
DY2 8QX**

T: 01384 242156

F: 01384 458263

Email: sales@abfans.co.uk

Web: www.abfans.co.uk

