

# METPRO

## M&E



MECHANICAL & ELECTRICAL INSTALLATION ACCESSORIES



We are pleased that you have chosen to take a look at our Product Catalogue – thank you!

We hope that you will find what you are looking for, but if you have any queries please contact us directly. Our friendly and knowledgeable sales support team would be delighted to talk to you.

Metpro Limited is a proud British independent private family business. We thrive on hard work, supporting the electrical wholesale trade with excellent service. We maintain high levels of stock throughout the year so that you don't need to and we offer good quality products at great value to help you run your business profitably.

## Ordering From Us

Our product code numbers are clearly shown in the catalogue along with our minimum pack quantities for your convenience. It's easy to order from us either by e-mail, by fax or by phone. We are here from 8.30am until 5pm every weekday. Just email [sales@metpro.co.uk](mailto:sales@metpro.co.uk), Fax 0121 552 3363 or call 0121 552 2100 and we are ready to help.

## Fast Delivery

We pride ourselves on shipping orders promptly so that you receive them in full, on time, every time.

Normally orders received before 3pm will be shipped that afternoon. Orders received after 3pm will be shipped the following day. For more urgent shipment requirements simply talk to us to see what we can do! We are more than happy to accept orders for on-site deliveries direct to contractors if required.

## Technical Enquiries

For all technical enquiries and requests for product specifications please call 0121 552 2100.

We would like to thank all our existing customers for their kind support and welcome all new customers.

## The Metpro Group



Metpro Group has separate Divisions of which M&E is one. Our other Divisions include:



In 2002 we set up the **Global Sourcing Division** to supply bespoke products to OEM's. This Division was strengthened further in 2006 with the creation of Metpro China which supports Metpro Global Sourcing in product procurement and local quality control using our employed engineers. Metpro Global Sourcing has been described by many as the Manufacturer's

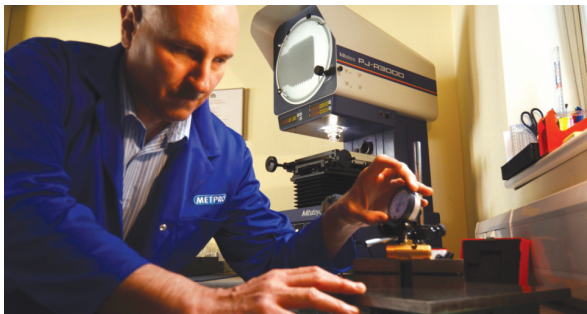


Formed in 2004 Metpro **Security Division** specialises in the supply of multipoint locks, keeps, shoot bolts and cylinders etc. Special customer requirements can also be catered for.



Metpro **Precision Engineering** is a fresh new workshop set up in 2013 to add an extra dimension to the services that Metpro Limited can offer our customers. We have a state-of-the-art CNC turning and milling machine shop which enables us to manufacture high quality complex machined components to very tight tolerances. [www.metproprecision.co.uk](http://www.metproprecision.co.uk)

<b>Introduction to Metpro</b>	<b>2</b>
<b>Quality</b>	<b>3</b>
<b>Conduit Fittings and Accessories</b>	
Malleable Conduit Boxes	4
Fittings and Accessories	5
Brass Fittings	6
Cable Gland Kits	6
Fixings, Tools and Consumables	7
<b>PVC Conduit Fittings and Accessories</b>	
PVC Conduit Boxes	8
PVC Conduit Fittings and Accessories	8-9
PVC Dry Lining and Surface Mounted Boxes	9
<b>Adaptable Boxes and Switch &amp; Socket Boxes</b>	
Adaptable Boxes	10
Flush Back and Extension Boxes	11
Terminal Blocks and Earthing Products	11
<b>Fixings</b>	
Nuts, Bolts, Screws, Washers, Plugs and Fixings	12
<b>Channel Support Fittings and Accessories</b>	
Channel Nuts (Spring Nuts)	13
Flat and Angled Brackets	14
Brackets, Z and U Profile Brackets	15
Base Plates, Clamps and Connectors	16
Channel Support Fixings	17
<b>Support Brackets</b>	
Stand Off Brackets, Tray and Trunking Hangers, Cantilever Arms	18
<b>Terms and Conditions of Sale</b>	<b>19-21</b>



## Established over 20 years

Metpro Limited was established in 1993 and over the last 20 years has gained experience and grown steadily into one of the leading suppliers of Cable Management Fittings and Accessories in the UK. We supply a wide range of products to suit both the mechanical and electrical installation markets.

## Marketing strategy

Our Marketing strategy is to supply only through Distributors and Wholesalers, giving them our unwavering support in supplying products to the trade contractor.

Ideally located in Oldbury in the West Midlands we operate from a 20,000ft<sup>2</sup> warehouse and office facility less than one mile from J2 of the M5.

We hold extensive stocks of all parts for seamless availability of quality product at competitive prices. This enables us to offer a next day delivery service to most areas of the UK and unrivalled customer service resulting in us having a solid reputation for giving our customers exactly what they want, when they want it.

Our mission for excellence has been rewarded by our ever increasing customer base and our aim is to maintain a high level of customer satisfaction. The Metpro M&E Division prides itself on exceptionally high levels of customer service.

We have strong relationships with our suppliers in Asia to ensure a robust supply chain. We have invested heavily in IT systems and experienced personnel to ensure that our logistics operation runs smoothly.

## Manufacturing Innovation

We work hard at our supplier relationships and continually develop and improve our products in partnership with the factories. Evidence of the innovation that Metpro has brought to the industry can be seen in our range of Top Hat Brackets (A special Stand-Off Bracket with an integral captive nut). These were designed and developed in house by Metpro and have been a great success, drastically reducing contractor installation times.

Metpro continues to invest in product development across the mechanical and electrical installation sector. We have the factories and the skill sets required to stay at the forefront of design and innovation.

We are bucking the trend by manufacturing in the UK and have recently opened a new manufacturing facility – Metpro Precision Engineering. This has enabled us to hasten the development of new products as we can CAD design, reverse engineer, prototype, sample and test components locally. Who knows you may soon be buying a UK manufactured conduit box! For more details visit [www.metproprecision.co.uk](http://www.metproprecision.co.uk).





Our company philosophy is one of quality at all levels and stages from enquiry to delivery. Our quality management system involves a set of working practices, disciplines and procedures that govern everything that we do to ensure that we supply our customers with the best products and service.

All products listed in this brochure are manufactured by our suppliers under a certified ISO 9000 system or have their quality assured to that level by the rigorous inspection of direct employees of Metpro Limited to ensure a uniform standard of quality. Our dedicated quality team in Asia ensures that all of our products are inspected during manufacture and upon completion of production, prior to shipment to the UK. Sample inspection is then carried out upon receipt in our warehouse. Our Quality Department has fully equipped testing facilities which enable metallurgical, mechanical and dimensional testing.

- Metpro Limited has ISO9001: 2008 Accreditation
- Members Of The British Standards Institute
- Internal Quality Control To BS6001: 1991 S4
- Dedicated UK Quality Control Manager
- Metpro directly employ Asian Nationals to oversee Quality Control prior to despatch
- UKAS Certified Calibrated Measuring Equipment



### Relevant Product Standards

All M&E wholesale products are supplied in accordance with the appropriate standard of specification (BS, DIN, ISO etc.)

#### British Standards

Metpro products are manufactured in accordance with the relevant British Standards where applicable. Compliance with these standards is essential should the installation need to conform to the requirements of the IEE Regulations.

These include:

- Conduit Fittings & Accessories ...BS EN 50086, BS EN 50086-2:1996 and BS31:1940 for imperial components.
- Adaptable Boxes.....BS 4568 part 2
- Switch and Socket Boxes.....BS 4662
- Channel Support Fittings .....BS 6946:2002

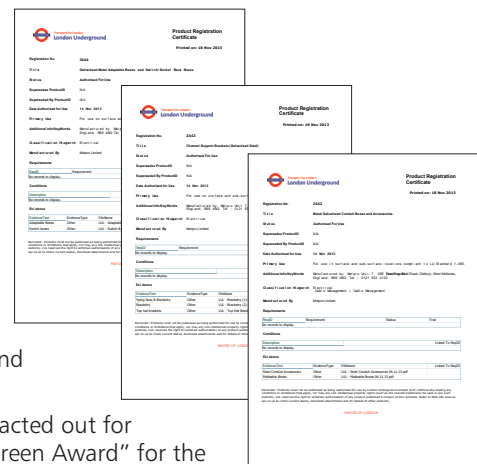


#### LUL London Underground Certification

In addition we are proud to have London Underground Certification for most of the products we supply for use on surface and sub-surface locations, compliant to LU Standard 1-085. This means that our products are suitable for installation in the most safety critical environments and cover:

- Metal Adaptable Boxes and Switch/Socket Back Boxes
- Channel Support Brackets and Top Hat Brackets
- Metal Galvanised Conduit Boxes and Accessories

**Please contact us for copies of the certification if required.**



#### Environmental Policy

Metpro believes that the measures we have in place fully comply with all national and international standards. These measures include:

- All surplus/scrap office paperwork and related sensitive documentation is contracted out for shredding and an official disposal certificate is issued annually, along with a "Green Award" for the natural resource we have saved.
- Metpro only use 100% recycled wooden pallets.
- Investment in software to reduce official government legislative paperwork.
- We received a grant from the Carbon Trust to install a "Green Lighting" system in our warehouse.
- Use of recycled cardboard packaging in the warehouse resulted in a 40% reduction of cardboard waste.

#### Health and Safety

Metpro's first priority is the health and safety of our most valuable asset - our workforce.

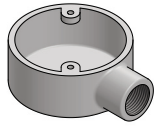
We go to extreme lengths to ensure that a culture of 'safety first' exists in all tasks we carry out. Initially a full ergonomic evaluation of the warehouse layout, equipment used and preventative maintenance checks was conducted with on-going regular evaluation of these areas. This has led to H&S performance of zero lost time due to accidents over the last 5 years.

## Malleable Conduit Boxes

Manufactured from Malleable Iron with a galvanised or black enamel finish. Available in 20, 25 or 32mm sizes. Complete with tapped hole in base for earthing screw. Supplied without covers or earthing screws.

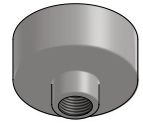
### Terminal

	Galv	Black	Pack
20mm	MB1G	MB1B	10
25mm	MB8G	MB8B	10
32mm	MB21G	-	1



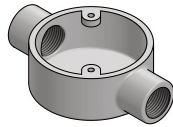
### Back Outlet

	Galv	Black	Pack
20mm	TB1G	TB1B	10
25mm	TB11G	-	10



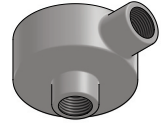
### Through

	Galv	Black	Pack
20mm	MB2G	MB2B	10
25mm	MB9G	MB9B	10
32mm	MB22G	-	1



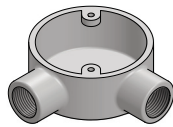
### Terminal Back Outlet

	Galv	Black	Pack
20mm	TB2G	TB2B	10



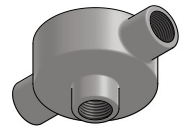
### Angle

	Galv	Black	Pack
20mm	MB3G	MB3B	10
25mm	MB10G	MB10B	10
32mm	MB23G	--	1



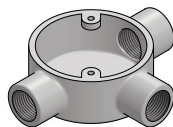
### Through Back Outlet

	Galv	Black	Pack
20mm	TB3G	TB3B	10



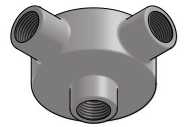
### Tee

	Galv	Black	Pack
20mm	MB4G	MB4B	10
25mm	MB11G	MB11B	10
32mm	MB24G	-	1



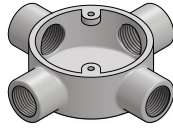
### Angle Back Outlet

	Galv	Black	Pack
20mm	TB4G	TB4B	10



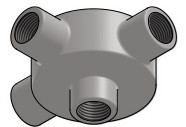
### Intersection

	Galv	Black	Pack
20mm	MB5G	MB5B	10
25mm	MB12G	MB12B	10



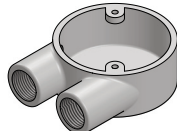
### Tee Back Outlet

	Galv	Black	Pack
20mm	TB5G	TB5B	10



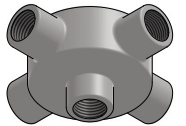
### U Branch

	Galv	Black	Pack
20mm	MB6G	MB6B	10
25mm	MB13G	MB13B	10



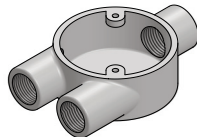
### Intersection Back Outlet

	Galv	Black	Pack
20mm	TB6G	TB6B	10



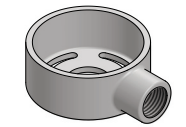
### Y Branch

	Galv	Black	Pack
20mm	MB7G	MB7B	10
25mm	MB14G	MB14B	10



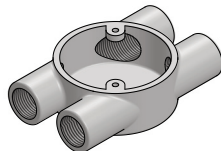
### Terminal Extension

	Galv	Black	Pack
20mm	ET1G	ET1B	10



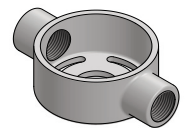
### H Through

	Galv	Black	Pack
20mm	MB15G	MB15B	10
25mm	MB16G	MB16B	10



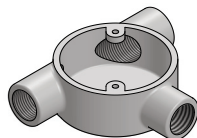
### Through Extension

	Galv	Black	Pack
20mm	ET2G	ET2B	10



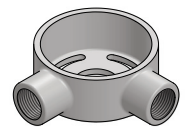
### Tangent Tee

	Galv	Black	Pack
20mm	MB17G	MB17B	10



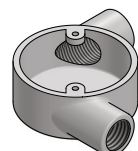
### Angle Extension

	Galv	Black	Pack
20mm	ET3G	ET3B	10



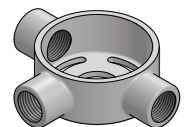
### Tangent Angle

	Galv	Black	Pack
20mm	MB19G	MB19B	10



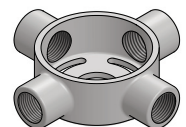
### Tee Extension

	Galv	Black	Pack
20mm	ET4G	ET4B	10



### Intersection Extension

	Galv	Black	Pack
20mm	ET5G	ET5B	10



# Conduit Fittings & Accessories

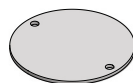
Loop In Boxes	Galv	Black	Pack
One Hole	LP1G	LP1B	10
Two Hole	LP2G	-	10
4 Hole K/O	LP4G	LP4B	10



Extension Rings	Galv	Black	Pack
10mm	SR10G	SR10B	50
13mm	SR13G	SR13B	50
16mm	SR16G	SR16B	50
20mm	SR20G	SR20B	20
25mm	SR25G	SR25B	20
32mm	SR32G	SR32B	20
40mm	SR40G	SR40B	20
50mm	SR50G	SR50B	10

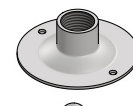


Box Lids & Covers	Galv	Black	Pack
Circular	BL1G	BL1B	100
Oversized	BL1G/OS	-	50
32mm 4 Hole Lid	BL3G	-	1

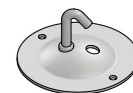


Gaskets Rubber	Galv	Black	Pack
Gaskets	CR1G	-	100
32mm 4 Hole Circular	CRG3	-	1

Dome Covers (Female)	Galv	Black	Pack
20mm	DC1G	DC1B	25
25mm	DC2G	-	25



Hook Plates	Galv	Black	Pack
20mm	HP1G	HP1B	25



Ball & Socket Cover	Galv	Black	Pack
Malleable Iron	BSC1G	-	20



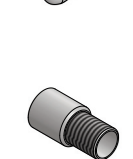
Male Hooks Screwed	Galv	Black	Pack
20mm	MH1G	MH1B	25



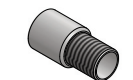
Male Hooks Malleable	Galv	Black	Pack
20mm	MHM1G	MHM1B	50



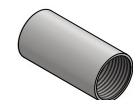
Metric to Imperial Adaptor	Galv	Black	Pack
20mm(M) to 3/4"(F)	FA1G	FA1B	100
25mm(M) to 1"(F)	FA3G	FA3B	50



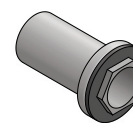
Imperial to Metric Adaptor	Galv	Black	Pack
3/4"(M) to 20mm (F)	FA2G	FA2B	100
1"(M) to 25mm (F)	FA4G	FA4B	50



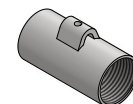
Solid Couplers	Galv	Black	Pack
20mm	SC1G	SC1B	100
25mm	SC2G	SC2B	50
32mm	SC3G	SC3B	50
1 1/2"	SC4G	SC4B	25
2"	SC5G	SC5B	10



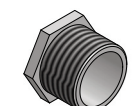
Flanged Couplers	Galv	Black	Pack
20mm	FCS1G	FCS1B	50
25mm	FCS2G	FCS2B	25
32mm	FCS3G	-	10



Earth Couplers	Galv	Black	Pack
20mm	EC1G	EC1B	100
25mm	EC2G	EC2B	50



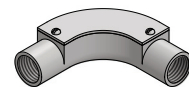
Hexagon Stopping Plug	Galv	Black	Pack
20mm	HSP1G	HSP1B	50
25mm	HSP2G	HSP2B	25
32mm	HSP3G	-	25



Solid Bend	Galv	Black	Pack
20mm	SB1G	SB1B	10
25mm	SB2G	SB2B	10

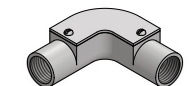


Inspection Bend	Galv	Black	Pack
20mm	IB1G	IB1B	10
25mm	IB2G	IB2B	10
32mm	IB3G	-	1

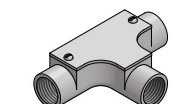


Solid Elbow	Galv	Black	Pack
20mm	SE1G	-	10

Inspection Elbow	Galv	Black	Pack
20mm	IE1G	IE1B	10
25mm	IE2G	IE2B	10
32mm	IE3G	-	1



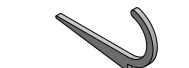
Inspection Tee	Galv	Black	Pack
20mm	IT1G	IT1B	10
25mm	IT2G	IT2B	10
32mm	IT3G	-	1



Screwed Nipples	BZP	Pack
20mm	NS1	100
20mm/300mm	NS1/L	10
25mm	NS2	100
25mm/300mm	NS2/L	10
32mm	NS3	25

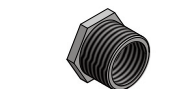


Crampets - Flat	Galv	Black	Pack
20mm	CF1G	CF1B	100
25mm	CF2G	CF2B	100



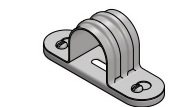
Crampets - Twisted	Galv	Black	Pack
20mm	CF1G/T	CF1B/T	100
25mm	CF2G/T	CF2B/T	100

Reducers - Hexagon	Galv	Black	Pack
20 - 16mm	HR1G	HR1B	50
25 - 20mm	HR2G	HR2B	50
32 - 20mm	HR3G	HR3B	25
32 - 25mm	HR4G	HR4B	25



Jack Chain - 10m = 1 Pack	Galv	Black	Pack
No.8	JC0	JC0B	1
No.10	JC1	JC1B	1

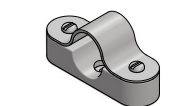
Spacer Bar Saddles	Galv	Black	Pack
20mm	SBS20G	SBS20B	100
25mm	SBS25G	SBS25B	100
32mm	SBS32G	SBS32B	50
1 1/2"	SBS38G	SBS38B	50
2"	SBS50G	SBS50B	50



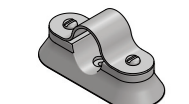
Plain Saddles	Galv	Black	Pack
20mm	PS1G	PS1B	100
25mm	PS2G	PS2B	100
32mm	PS3G	PS3B	100
1 1/2"	PS4G	PS4B	50
2"	PS5G	PS5B	50



Distance Saddles	Galv	Black	Pack
20mm	DS1G	DS1B	50
25mm	DS2G	DS2B	50
32mm	DS3G	DS3B	25
1 1/2"	DS4G	DS4B	25
2"	DS5G	DS5B	10



Hospital Saddles	Galv	Black	Pack
20mm	HOSP1G	-	25
25mm	HOSP2G	-	20



Half Saddles	Galv	Black	Pack
20mm	HS1G	HS1B	100
25mm	HS2G	HS2B	100



## Brass Bushes

Male Brass Bush – Short	Part No.	Pack Qty.
16mm	MBBS16	100
20mm	MBBS1	100
25mm	MBBS2	100
32mm	MBBS3	50
1½"	MBBS4	50
2"	MBBS5	25



Male Brass Bush – Long	Part No.	Pack Qty.
20mm	MBBL1	100
25mm	MBBL2	100
32mm	MBBL3	50
63mm	MBBL6	1
75mm	MBBL8	1
1½"	MBBL4	20
2"	MBBL5	10
2½"	MBBL7	1
3"	MBBL9	1



Female Brass Bush	Part No.	Pack Qty.
20mm	FBB1	100
25mm	FBB2	100
32mm	FBB3	100
63mm	FBB6	1
75mm	FBB8	1
1½"	FBB4	100
2"	FBB5	25
2½"	FBB7	1
3"	FBB9	1

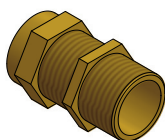


## Brass Lock Rings

Lock Rings - Milled Edge	Part No.	Pack Qty.
63mm	LR6	1
75mm	LR8	1
2½"	LR7	1
3"	LR9	1

## Brass Glands & Plugs

Brass TRS Stuffing Glands	Part No.	Pack Qty.
20mm	BTG1	100
25mm	BTG2	50
32mm	BTG3	10



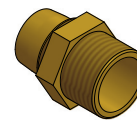
Brass Slotted Plugs	Part No.	Pack Qty.
20mm	BSP1	100
25mm	BSP2	100



## Cable Gland Kits

Cable Gland Kits - BW	Part No.	Pack Qty.
20mm Small Kit	BW20S	1
20mm Standard Kit	BW20	1
25mm Standard Kit	BW25	1
32mm Standard Kit	BW32	1

Each Kit Contains 2 glands, 2 shrouds, 2 tags & 2 locknuts

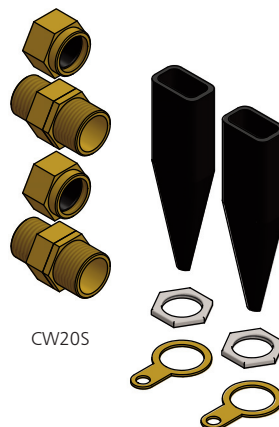


Cable Gland Kits - BW	Part No.	Pack Qty.
40mm Standard Kit	BW40	1
50mm Standard Kit	BW50	1
63mm Standard Kit	BW63	1
75mm Standard Kit	BW75	1

Each Kit Contains 1 gland, 1 shroud, 1 tag & 1 locknut

Cable Gland Kits - CW	Part No.	Pack Qty.
20mm Small Kit	CW20S	1
20mm Standard Kit	CW20	1
25mm Standard Kit	CW25	1
32mm Standard Kit	CW32	1

Each Kit Contains 2 glands, 2 shrouds, 2 tags & 2 locknuts



Cable Gland Kits - CW	Part No.	Pack Qty.
40mm Standard Kit	CW40	1
50mm Standard Kit	CW50	1
63mm Standard Kit	CW63	1
75mm Standard Kit	CW75	1

Each Kit Contains 1 gland, 1 shroud, 1 tag & 1 locknut

An Armoured Gland Pack Selector table is available upon request.

These Glands fully comply with all the electrical and mechanical requirements of BS6121, 1987, and are suitable for use with PVC/SWA/PVC600/1,000 volt armoured cables to BS6346, 1969.

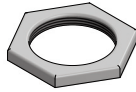




## Fixings, Tools & Consumables

### Locknuts

Locknuts - Light Hexagon	Galv	Black	Pack
16mm	LN16G	-	100
20mm	LN1G	LN1B	100
25mm	LN2G	LN2B	100
32mm	LN3G	LN3B	100
40mm	LN40G	-	50
1½"	LN4G	LN4B	50
2"	LN5G	LN5B	50
20mm Heavy Lock Nut	HN1G	-	100



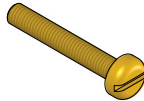
### Lock Rings

Lock Rings - Milled Edge	BZP	Pack
16mm	LR16	100
20mm	LR1	100
25mm	LR2	100
32mm	LR3	100
1½"	LR4	50
2"	LR5	50



### Box Lid Screws

Brass Pan Head Screws	Code	Pack
M4 x 6mm	BM6	100
M4 x 10mm	BM10	100
M4 x 12mm	BM12	100
M4 x 16mm	BM16	100
M4 x 20mm	BM20	100
M4 x 25mm	BM25	100
M4 x 30mm	BM30	100
M4 x 35mm	BM35	100
M4 x 40mm	BM40	100
M4 x 50mm	BM50	100



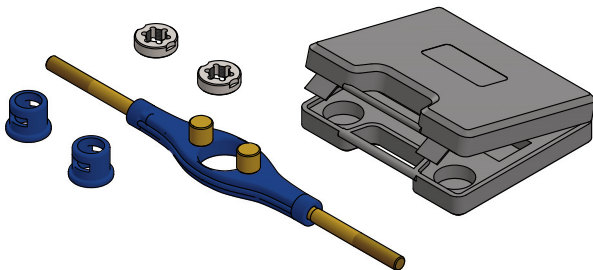
### Brass Earth Studs

	Code	Pack
M4 Earth Stud	BES	100



### Specialist Conduit Tools

	Code	Pack
Stock and Die Set	SAD1	1



To thread conduit of 20 and 25mm diameter. Complete with high quality Steel Dies and guides. Contains: Die Stock, 20 and 25mm Dies and Guides in a handy carry case.

Spares/Replacements	Code	Pack
20mm Die	SAD1/20SD	1
25mm Die	SAD1/25SD	1
20mm Stock	SAD1/20SG	1
25mm Stock	SAD1/25SG	1
Die Stock	SAD1/DS	1



### Conduit Pipe Bending Machine

	Code	Pack
Conduit Pipe Bending Machine	BM20/25	1

- Portable stand machine with dual sized former to handle 20mm and 25mm
- Allows accurate bends every time by a simple adjustment to the former
- Can produce complex, multiple bends quickly
- Comes complete with 20mm and 25mm formers as standard



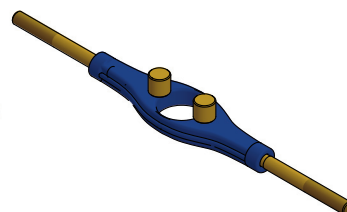
Bushing Spanner	Code	Pack
20/25mm Bushing Spanner	BKS1	1

### Consumables

Draw Tape	Code	Pack
Nylon x 20m	PDT1	1

Conduit Threading Tallow	Code	Pack
500g Block	TALLOW	1

Metal Cutting Lubricant	Code	Pack
450gm Tin	TEMAXOL	1



## PVC Conduit Boxes

Metpro moulded PVC conduit accessories are manufactured to BS4607 Part1 and BS EN 50086-1 and BS EN 50086-2-1. Accessories are available in white or black finish and include 2 x M4 brass inserts where applicable.

Terminal	White	Black	Pack
20mm	PB1W	PB1B	20
25mm	PB11W	PB11B	20



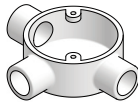
Through	White	Black	Pack
20mm	PB2W	PB2B	20
25mm	PB12W	PB12B	20



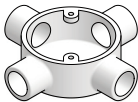
Angle	White	Black	Pack
20mm	PB3W	PB3B	20
25mm	PB13W	PB13B	20



Tee	White	Black	Pack
20mm	PB4W	PB4B	20
25mm	PB14W	PB14B	20



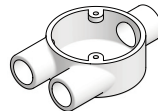
Intersection	White	Black	Pack
20mm	PB5W	PB5B	20
25mm	PB15W	PB15B	15



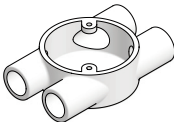
U Branch	White	Black	Pack
20mm	PB6W	PB6B	20



Y Branch	White	Black	Pack
20mm	PB7W	PB7B	20



H Through	White	Black	Pack
20mm	PB8W	PB8B	20



Extension Rings	White	Black	Pack
25mm	PER25W	-	20



Loop-in Boxes	White	Black	Pack
4 x 20mm Knockout	PL4W	PL4B	20



## Adaptors & Reducers

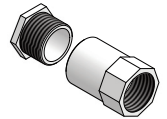
Reducer	White	Black	Pack
25 - 20mm	PR25W	PR25B	100



Male Adaptor	White	Black	Pack
20mm	PAM20W	PAM20B	100
25mm	PAM25W	PAM25B	100

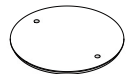


Female Adaptor	White	Black	Pack
20mm	PAF20W	PAF20B	100
25mm	PAF25W	PAF25B	100



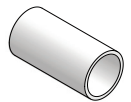
## Box Lids

Box Lids	White	Black	Pack
Circular Lids	PLW	PLB	100



## Couplers

Coupler	White	Black	Pack
20mm	PSC20W	PSC20B	100
25mm	PSC25W	PSC25B	100



## Elbows, Bends & Tees

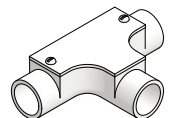
Solid Bend	White	Black	Pack
20mm	PSB20W	PSB20B	20
25mm	PSB25W	PSB25B	20



Inspection Bend	White	Black	Pack
20mm	PIB20W	PIB20B	20
25mm	PIB25W	PIB25B	20



Inspection Tee	White	Black	Pack
20mm	PIT20W	PIT20B	20
25mm	PIT25W	PIT25B	25

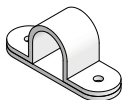


Inspection Elbow	White	Black	Pack
20mm	PIE20W	PIE20B	20
25mm	PIE25W	PIE25B	20



## Saddles

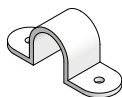
Spacer Bar Saddles	White	Black	Pack
20mm	PSBS20W	PSBS20B	100
25mm	PSBS25W	PSBS25B	100



Glands IP68 Rated	White	Black	Pack
16mm (5-10mm)	-	PCG16B/510	100
20mm (6-12mm)	PCG20W/612	PCG20B/612*	100
25mm (13-18mm)	PCG25W/13-18	-	100

\*Red also available – Use suffix 'R'

Plain Saddles	White	Black	Pack
20mm	PPS20W	PPS20B	100
25mm	PPS25W	PPS25B	100



## Locknuts

Locknuts	White	Black	Pack
16mm	PLN16W	PLN16B	100
20mm	PLN20W	PLN20B	100
25mm	PLN25W	PLN25B	100
32mm	PLN32W	PLN32B	50



Red available also – use suffix 'R'

Spring Clip Saddles - Round	White	Black	Pack
20mm	PRSC20W	PRSC20B	100
25mm	PRSC25W	PRSC25B	100



## Lock Rings

Lock Rings	White	Black	Pack
20mm	PLR20W	PLR20B	100
25mm	PLR25W	PLR25B	100



## Bushes

Male Bush Screwed	White	Black	Pack
20mm	PMB20W	PMB20B	100
25mm	PMB25W	PMB25B	100

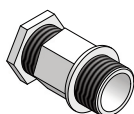


## Adhesive

PVC Conduit Adhesive	Code	Pack
250ml Tin	PAS	1

## Glands

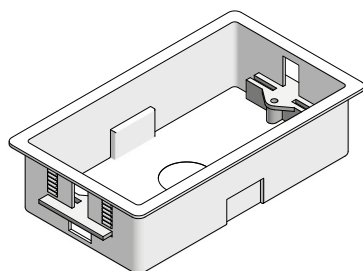
Stuffing Glands	White	Black	Pack
16mm (4-7mm)	PSG16W/248	PSG16B/248*	100
16mm (7-11mm)	PSG16W/250	PSG16B/250*	100
20mm (4-7mm)	PSG20W/249	PSG20B/249*	100
20mm (7-11mm)	PSG20W/251	PSG20B/251*	100
20mm (8-13mm)	PSG20W/252	PSG20B/252*	100
25mm (8-13mm)	PSG25W/253	PSG25B/253*	100
25mm (12-18mm)	PSG25W/254	PSG25B/254*	100
25mm (18-24mm)	PSG25W/255	PSG25B/255*	100



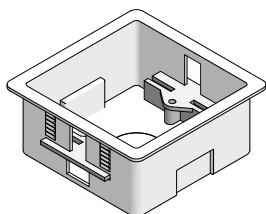
## PVC Accessory Boxes

Dry Lining Boxes	White	Pack
1 Gang	PDLB1	20
2 Gang	PDLB2	10

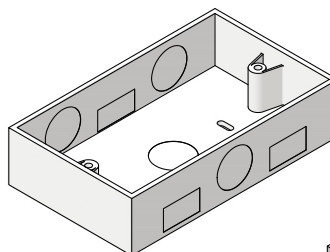
Surface Mounted Boxes – 32mm	White	Pack
1 Gang - Universal Entry	PSB1/C	20
2 Gang - Universal Entry	PSB2	10



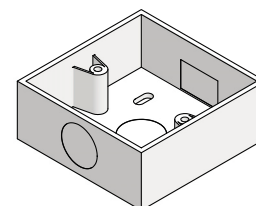
PDLB2



PDLB1



PSB2

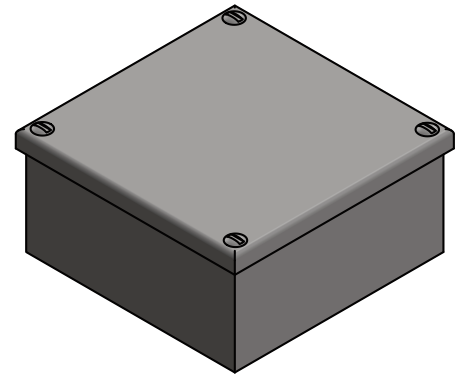


PSB1/C

\*Red also available – Use suffix 'R'

Metpro Adaptable Boxes are manufactured from 1.2mm nominal pre-galvanised steel to BS EN 50142 & 3, and comprise of body, flanged cover and 4 lid fixing screws.

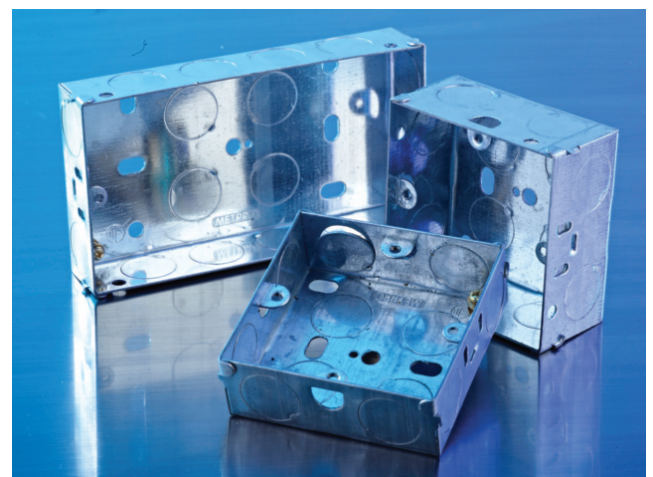
If required, the box can be supplied with 20mm conduit knockouts on all four sides. The number of knockouts is dependent upon the size of the box. Exact number and positioning of the knockouts can be supplied upon request.



Metric Sizes	Imperial Approximate	Plain	With Knock Outs	Inner Quantity
75 x 75 x 37.5	(3 x 3 x 1½")	AB01G	AB01G/K	10
75 x 75 x 50	(3 x 3 x 2")	AB02G	AB02G/K	10
75 x 75 x 75	(3 x 3 x 3")	AB03G	AB03G/K	5
100 x 100 x 37.5	(4 x 4 x 1½")	AB04G	AB04G/K	5
100 x 100 x 50	(4 x 4 x 2")	AB05G	AB05G/K	5
100 x 100 x 75	(4 x 4 x 3")	AB06G	AB06G/K	5
100 x 100 x 100	(4 x 4 x 4")	AB07G	AB07G/K	2
150 x 75 x 50	(6 x 3 x 2")	AB08G	AB08G/K	5
150 x 75 x 75	(6 x 3 x 3")	AB09G	AB09G/K	5
150 x 100 x 50	(6 x 4 x 2")	AB10G	AB10G/K	5
150 x 100 x 75	(6 x 4 x 3")	AB11G	AB11G/K	5
150 x 150 x 37.5	(6 x 6 x 1½")	AB12G	AB12G/K	5
150 x 150 x 50	(6 x 6 x 2")	AB13G	AB13G/K	6
150 x 150 x 75	(6 x 6 x 3")	AB14G	AB14G/K	5
150 x 150 x 100	(6 x 6 x 4")	AB15G	AB15G/K	3
225 x 150 x 50	(9 x 6 x 2")	AB16G	AB16G/K	5
225 x 150 x 75	(9 x 6 x 3")	AB17G	AB17G/K	5
225 x 150 x 100	(9 x 6 x 4")	AB18G	AB18G/K	2
225 x 225 x 50	(9 x 9 x 2")	AB19G	AB19G/K	2
225 x 225 x 75	(9 x 9 x 3")	AB20G	AB20G/K	2
225 x 225 x 100	(9 x 9 x 4")	AB21G	AB21G/K	2
300 x 300 x 50	(12 x 12 x 2")	AB22G	AB22G/K	2
300 x 300 x 75	(12 x 12 x 3")	AB23G	AB23G/K	1
300 x 300 x 100	(12 x 12 x 4")	AB24G	AB24G/K	1
300 x 300 x 150	(12 x 12 x 6")	AB25G	AB25G/K	1



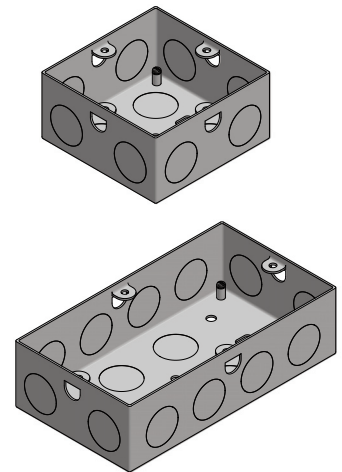
All Metpro Adaptable Boxes and Switch & Socket boxes are certified by London Underground for use on surface and sub-surface locations. Compliant to LU Standard 1-085.



Manufactured out of sheet steel to comply with BS4662

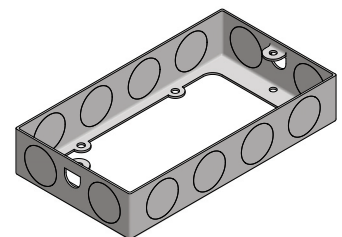
## Flush Back Boxes - Steel

Part No.	Depth	Size	Fixed Lugs	Adjust Lugs	Inner Qty.
EWS1	16mm	1 Gang	1	1	20
EWS2	25mm	1 Gang	3	1	10
EWS3	25mm	2 Gang	1	1	5
EWS4	35mm	1 Gang	3	1	10
EWS4/25	35mm	1 Gang	3	1	10
EWS5	35mm	2 Gang	1	1	5
EWS6	35mm	Dual Box	6	2	5
EWS7	47mm	1 Gang	3	1	10
EWS8	47mm	2 Gang	1	1	5



## Extension Boxes - Steel

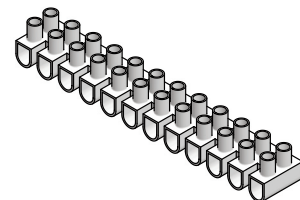
Part No.	Depth	Size	Fixed Lugs	Adjust Lugs	Inner Qty.
EWS9	16mm	1 Gang	1	1	20
EWS10	16mm	2 Gang	1	1	10
EWS11	25mm	1 Gang	3	1	10
EWS12	25mm	2 Gang	1	1	5
EWS13	35mm	1 Gang	3	1	10
EWS14	35mm	2 Gang	1	1	5



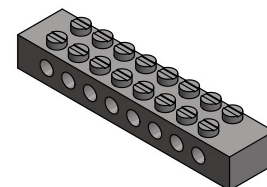
## Terminal Blocks

Metpro 12 way polyethylene terminal blocks are readily sub-divided and fitted with brass terminals with brass screws. Max Temperature 80°C.

12 Way Polyethylene Terminal blocks	Part No.	Pack
3 Amp	CS3A	10
5 Amp	CS5A	10
15 Amp	CS15A	10
30 Amp	CS30A	10
60 Amp	CS60A	5



Brass Terminal blocks	Part No.	Pack
Earth Block 4 Way	EB4	20
Earth Block 8 Way	EB8	20

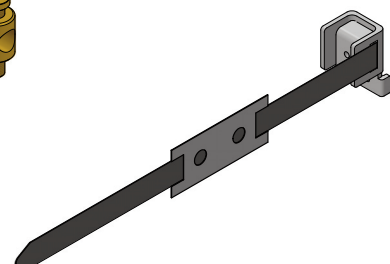


## Earthing Products

Brass Earth Studs	Part No.	Pack
M4 Earth Stud	BES	100



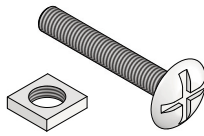
Earth Clamps	Length	Part No.	Pack
For Pipe Diameter 12-32mm	6" (150mm)	EC14	25
For Pipe Diameter 50-75mm	12" (300mm)	EC14/L	25



See page 9 for PVC Dry Lining and Surface Mounted Boxes!

**Roofing Nuts & Bolts**

	Code	Pack
M6 x 12mm	RB612	200
M6 x 16mm	RB616	200
M6 x 20mm	RB620	200
M6 x 25mm	RB625	200
M6 x 30mm	RB630	200
M6 x 35mm	RB635	100
M6 x 40mm	RB640	100
M6 x 50mm	RB650	100
M6 Flat Roofing Nut	FN6	100



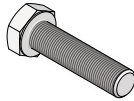
**Cone Point - HT8.8**

Cone Point	Code	Pack
M10 x 40mm	CP1040	100



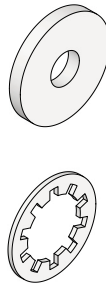
**Hexagon Head Set Screws - HT8.8** Pack Qty -100

mm ↓	10	12	16	20	25	30	35	40	50	60	80	100
M6	HH610	HH612	HH616	HH620	HH625	HH630	HH635	HH640	HH650	-	-	-
M8	HH810	HH812	HH816	HH820	HH825	HH830	HH835	HH840	HH850	-	-	-
M10				HH1020	HH1025	HH1030	HH1035	HH1040	HH1050	HH1060	HH1080	HH10100
M12				HH1220	HH1225	HH1230	HH1235	HH1240	HH1250	HH1260	HH1280	HH12100
M16				-	HH1625	HH1630	HH1635	HH1640	HH1650	HH1660	HH1680	HH16100
M20				-	-	-	-	-	-	-	HH2080	HH20100



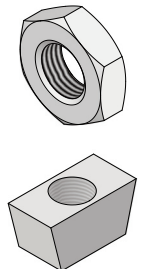
**Washers** Penny washers are 25mm OD

Size	Flat	Penny	Shake Proof	Red Fibre	Pack
M6	FW6	PW6	SW6	-	100
M8	FW8	PW8	SW8	-	100
M10	FW10	PW10	SW10	-	100
M12	FW12	PW12	SW12	-	100
M16	-	-	SW16	-	100
M20	-	-	SW20	RFW20	100
M25	-	-	SW25	RFW25	100
M32	-	-	SW32	RFW32	50



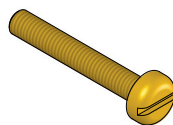
**Nuts**

Size	Hex	Wedge	Pack
M6	HFN6	WN6	100
M8	HFN8	WN8	100
M10	HFN10	WN10	100
M12	HFN12	WN12	100
M16	HFN16	-	100
M20	HFN20	-	100



**Box Lid Screws**

Brass Pan Head Screws	Code	Pack
M4 x 6mm	BM6	100
M4 x 10mm	BM10	100
M4 x 12mm	BM12	100
M4 x 16mm	BM16	100
M4 x 20mm	BM20	100
M4 x 25mm	BM25	100
M4 x 30mm	BM30	100
M4 x 35mm	BM35	100
M4 x 40mm	BM40	100
M4 x 50mm	BM50	100



**Brass Nuts and Washers**

	Code	Pack
M4 Full Nut	BMN	100
4mm Washer	BMW	100

**Plastic Plugs**

	Code	Pack
4 & 6g Yellow	PPY	100
6, 8 & 10g Red	PPR	100
10, 12 & 14g Brown	PPB	100

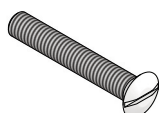
**Anchor Fixings**

	Non Drill	Pack	Setting Tool	Pack
M6	NDA6	100	NDA6/ST	1
M8	NDA8	100	NDA8/ST	1
M10	NDA10	100	NDA10/ST	1
M12	NDA12	50	NDA12/ST	1



**Raised Countersunk Screws**

Nickel Plated	Code	Pack
M3.5 x 20mm	MH20	100
M3.5 x 25mm	MH25	100
M3.5 x 35mm	MH35	100
M3.5 x 40mm	MH40	100
M3.5 x 50mm	MH50	100
M3.5 x 75mm	MH75	100



**Plasterboard Fixings**

	Code	Pack
37mm x 12mm c/w Drive	PBX01	100

## Channel Nuts (Spring Nuts)

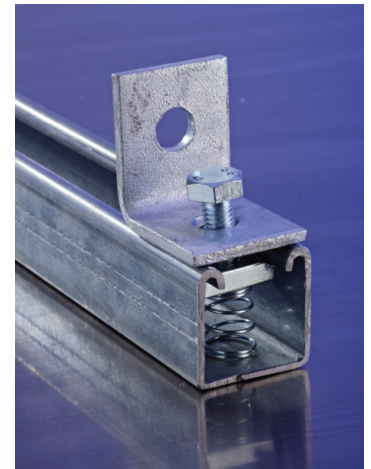
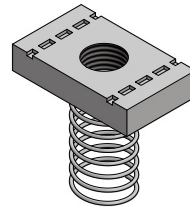
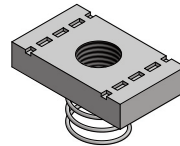
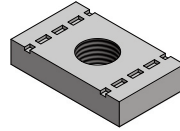
Metpro Spring Nuts are produced to comply with the requirements of BS6946 Metal Channel Support Systems. Our Spring Nuts can be used with all 41mm wide channel which complies with BS6946. We offer all options - either Zinc Plated, Hot Dip Galvanised or Stainless Steel 316 body and spring.

**For maximum load capacity M12 channel nuts should always be used.**

No Spring	Zinc Plated	Hot Dip Galvanised	Stainless Steel	Pack
M6	CS20	CS20/GA	CS20/SS	100
M8	CS21	CS21/GA	CS21/SS	100
M10	CS22	CS22/GA	CS22/SS	100
M12	CS23	CS23/GA	CS23/SS	100

Short Spring	Zinc Plated	Hot Dip Galvanised	Stainless Steel	Pack
M6	CS24	CS24/GA	CS24/SS	100
M8	CS25	CS25/GA	CS25/SS	100
M10	CS26	CS26/GA	CS26/SS	100
M12	CS27	CS27/GA	CS27/SS	100

Long Spring	Zinc Plated	Hot Dip Galvanised	Stainless Steel	Pack
M6	CS28	CS28/GA	CS28/SS	100
M8	CS29	CS29/GA	CS29/SS	100
M10	CS30	CS30/GA	CS30/SS	100
M12	CS31	CS31/GA	CS31/SS	100



All Spring Nuts and Channel Support Brackets are certified by London Underground for use on surface and sub-surface locations. Compliant to LU Standard 1-085.

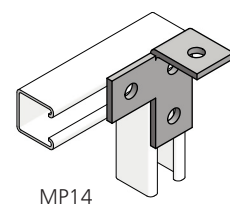
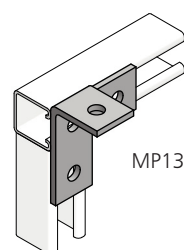
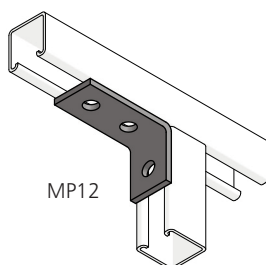
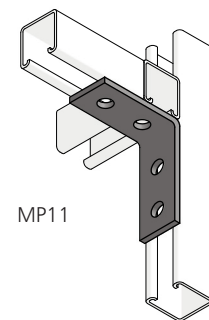
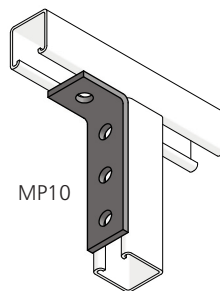
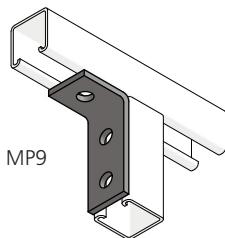
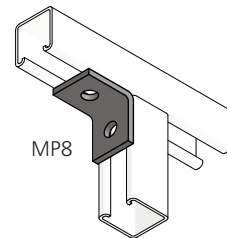
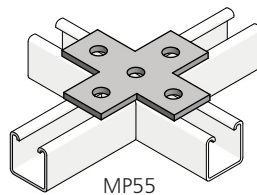
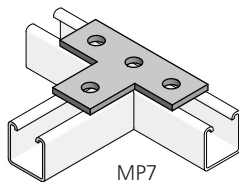
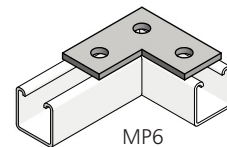
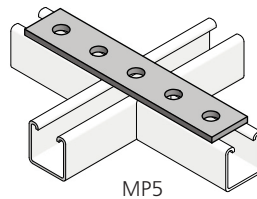
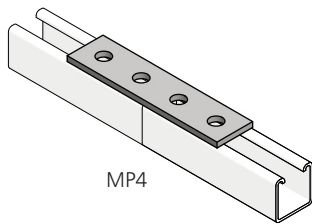
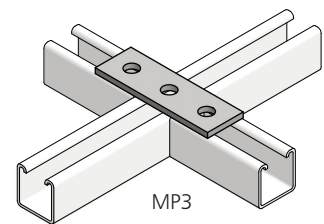
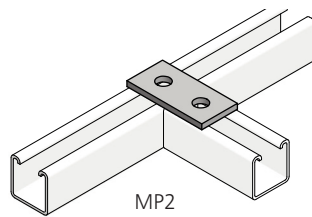
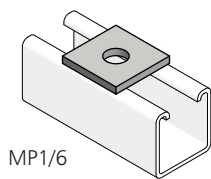


## Flat Brackets

	Code	Pack
Square Plate Washer M6	MP1/6	100
Square Plate Washer M8	MP1/8	100
Square Plate Washer M10	MP1/10	100
Square Plate Washer M12	MP1/12	100
Splice Plate 2 hole	MP2	50
Splice Plate 3 hole	MP3	25
Splice Plate 4 hole	MP4	50
Splice Plate 5 hole	MP5	25
Flat L Bracket	MP6	25
Flat T Bracket	MP7	25
Crossover Bracket	MP55	25

## Angled Brackets

1 + 1 hole 90° Bracket	MP8	100
1 + 2 hole 90° Bracket	MP9	25
1 + 3 hole 90° Bracket	MP10	25
2 + 2 hole 90° Bracket	MP11	25
2 + 1 hole 90° Bracket	MP12	25
LHT Corner Bracket	MP13	25
RHT Corner Bracket	MP14	25





## Brackets

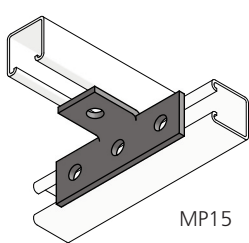
	Code	Pack
90° T Bracket	MP15	25
45° T Bracket	MP16	25
90° Bracket	MP17	10
90° Bracket	MP18	25
2+2 Hole Shelf Bracket	MP19	10
45° Obtuse Angle Bracket	MP20	25
22.5° Obtuse Angle Bracket	MP21	50
15° Obtuse Angle Bracket	MP22	50
45° Acute Angle Bracket	MP23	25
2+2 Hole Hinged Angle Bracket	MP57	10

## Z Profile Brackets

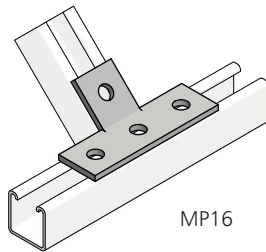
	Code	Pack
21mm Z Bracket	MP24	25
41mm Z Bracket	MP25	25
82mm Z Bracket	MP26	25

## U Profile Brackets

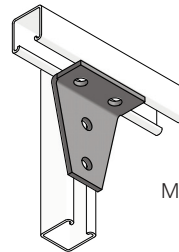
	Code	Pack
Channel Jointing Bracket	MP27	25
21mm U Bracket	MP28	25
41mm U Bracket	MP29	10
82mm U Bracket	MP30	10
Side by Side U Bracket	MP31	10
2 Lug Wing Bracket	MP32	10



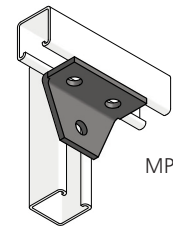
MP15



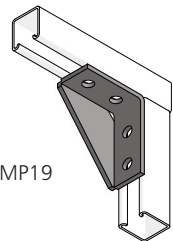
MP16



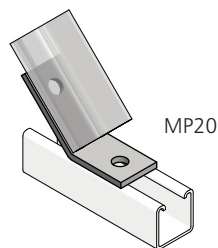
MP17



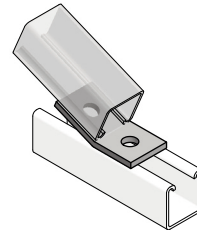
MP18



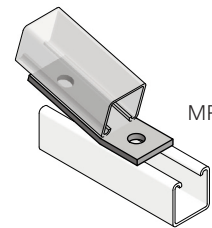
MP19



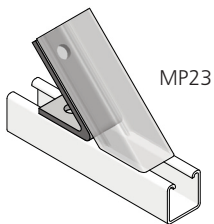
MP20



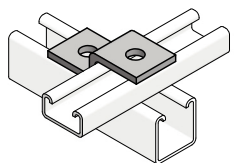
MP21



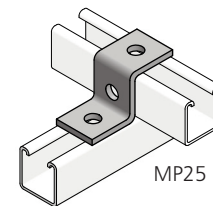
MP22



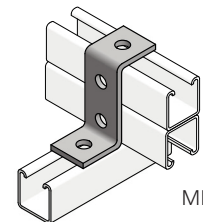
MP23



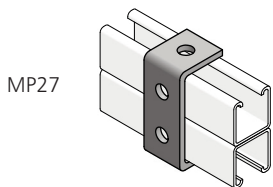
MP24



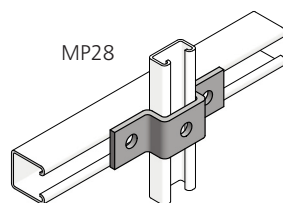
MP25



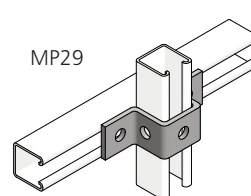
MP26



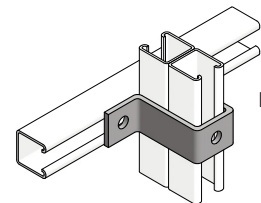
MP27



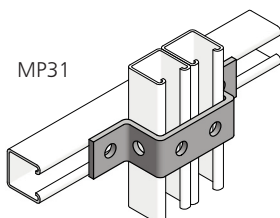
MP28



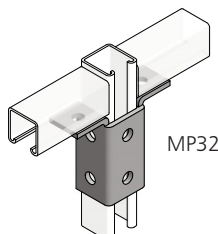
MP29



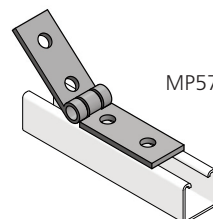
MP30



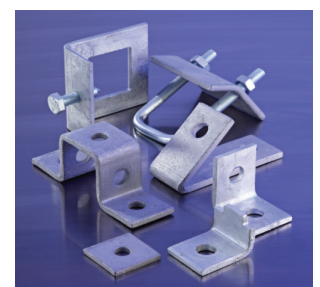
MP31



MP32



MP57



**Base Plates**

	Code	Pack
Single Lug Channel Base Plate	MP33	5
Double Lug Channel Base Plate	MP34	25
Double Channel Base Plate	MP35	5
Single Channel Gusset Base Plate	MP36	1
Double Channel Gusset Base Plate	MP37	1

**Beam Clamps**

	Code	Pack
Toe Beam Clamp	MP38	50
Large C Clamp (with cone point)	MP39	25
Small C Clamp (with cone point)	MP40	50
Z Clamp (with cone point)	MP41	50

**Window Beam Clamps (With Cone Point)**

	Code	Pack
21mm	MP42/21	10
41mm	MP42/41	10
82mm	MP42/82	10

**U Bolt Beam Clamps (With Nuts)**

	Code	Pack
41mm with M10 Nuts	MP43/41/10	10
82mm with M10 Nuts	MP43/82/10	10

**G Clamps For Fixed Beam**

	Code	Pack
M6 G Clamp	MP44/6	50
M8 G Clamp	MP44/8	25
M10 G Clamp	MP44/10	25

**Purlin Clip**

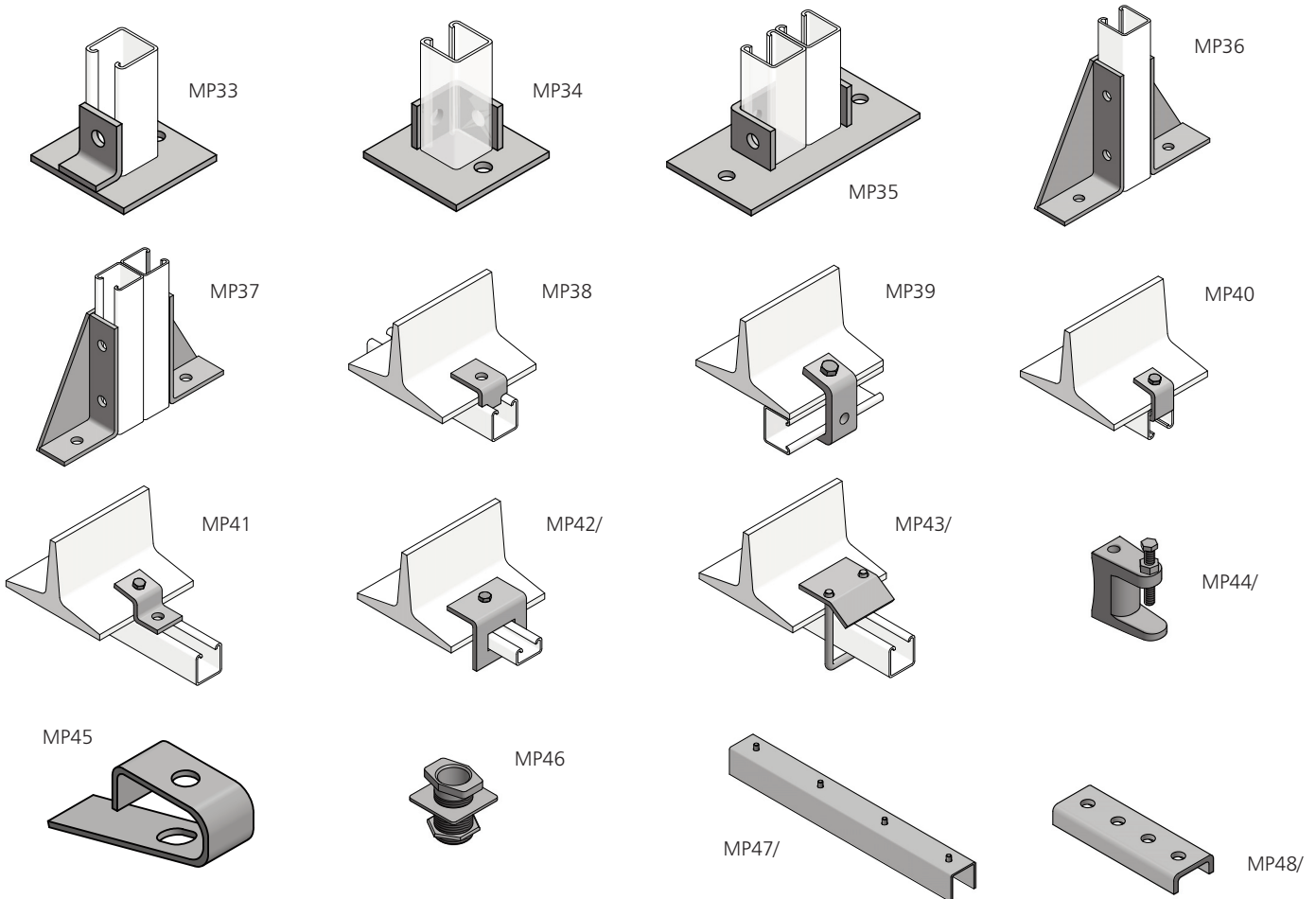
	Code	Pack
Purlin Clip	MP45	100

**Suspension Unit**

	Code	Pack
Suspension Unit	MP46	100

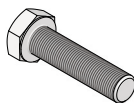
**Channel Connectors**

Internal Channel Couplers	Code	Pack
21 mm Complete with Screws	MP47/21	20
41 mm Complete with Screws	MP47/41	10
External Channel Couplers	Code	Pack
21mm	MP48/21	10
41mm	MP48/41	10



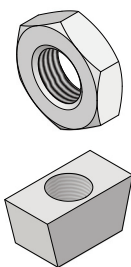
## Hexagon Head Set Screws - HT8.8 Pack Qty -100

mm ↓	10	12	16	20	25	30	35	40	50	60	80	100
M6	HH610	HH612	HH616	HH620	HH625	HH630	HH635	HH640	HH650	-	-	-
M8	HH810	HH812	HH816	HH820	HH825	HH830	HH835	HH840	HH850	-	-	-
M10				HH1020	HH1025	HH1030	HH1035	HH1040	HH1050	HH1060	HH1080	HH10100
M12				HH1220	HH1225	HH1230	HH1235	HH1240	HH1250	HH1260	HH1280	HH12100
M16				-	HH1625	HH1630	HH1635	HH1640	HH1650	HH1660	HH1680	HH16100
M20				-	-	-	-	-	-	-	HH2080	HH20100



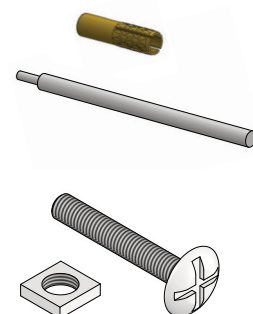
## Nuts All BZP

Size	Hex	Wedge	Pack
M6	HFN6	WN6	100
M8	HFN8	WN8	100
M10	HFN10	WN10	100
M12	HFN12	WN12	100
M16	HFN16	-	100
M20	HFN20	-	100



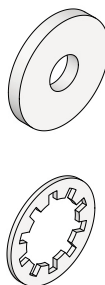
## Anchor Fixings

	Non Drill	Pack	Setting Tool	Pack
M6	NDA6	100	NDA6/ST	1
M8	NDA8	100	NDA8/ST	1
M10	NDA10	100	NDA10/ST	1
M12	NDA12	50	NDA12/ST	1



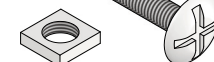
## Washers Penny washers are 25mm OD

Size	Flat	Penny	Shake Proof	Red Fibre	Pack
M6	FW6	PW6	SW6	-	100
M8	FW8	PW8	SW8	-	100
M10	FW10	PW10	SW10	-	100
M12	FW12	PW12	SW12	-	100
M16	-	-	SW16	-	100
M20	-	-	SW20	RFW20	100
M25	-	-	SW25	RFW25	100
M32	-	-	SW32	RFW32	50



## Roofing Nuts & Bolts

	Code	Pack
M6 x 12mm	RB612	200
M6 x 16mm	RB616	200
M6 x 20mm	RB620	200
M6 x 25mm	RB625	200
M6 x 30mm	RB630	200
M6 x 35mm	RB635	100
M6 x 40mm	RB640	100
M6 x 50mm	RB650	100
M6 Flat Roofing Nut	FN6	100



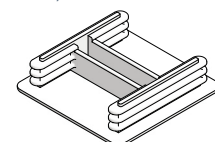
## Cone Point - HT8.8

Cone Point	Code	Pack
M10 x 40mm	CP1040	100



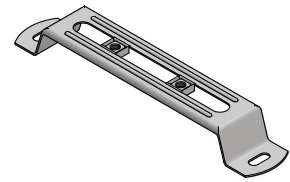
## End Caps - PVC (Black or White)

41 x 41	41 x 21	Pack
MP50/W	MP51/W	100
MP50/B	MP51/B	100



## Stand Off Brackets (With Captive Nut)

Top Hat Brackets (Width)	Code	No Slots	No. Nuts Per Slot	Pack
50mm	THB50	1	1	50
75mm	THB75	1	1	50
100mm	THB100	1	2	50
150mm	THB150	1	2	50
225mm	THB225	2	2	20
300mm	THB300	2	2	20
Spare Captive Nut	THB/M6	-	-	100



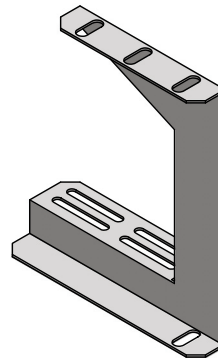
- Captive nut dramatically reduces installation time.
- Use Standard M6 roofing bolts to install directly into the captive nut.
- The Captive nut slides so the fixing point can be adjusted to any position along the width of the bracket.

Suitable for the installation of Light, Medium or Heavy duty Cable Tray and Cable Basket.

## Tray & Trunking Hangers

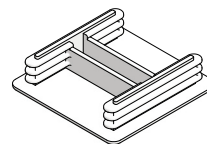
Designed to accept both Tray and Trunking on the same hanger. Multiple or single balanced fixing points on all sizes

	Code	Pack
100mm	TTH100	20
150mm	TTH150	20
225mm	TTH225	20
300mm	TTH300	20



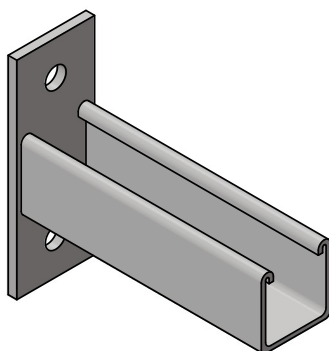
## End Caps - PVC (Black or White)

41 x 41	41 x 21	Pack
MP50/W	MP51/W	100
MP50/B	MP51/B	100



## Cantilever Arms

Length	Code	Pack
150mm	MP521	1
300mm	MP522	1
450mm	MP523	1
600mm	MP524	1
750mm	MP525	1
900mm	MP526	1
1000mm	MP527	1



The customer's attention is drawn in particular to the provisions of clause 8

## Interpretation

1 **Definitions.** In these conditions, the following definitions apply:-

**"Business Day"** .....a day (other than a Saturday, Sunday or public holiday) when banks in London are open for business.

**"Conditions"** .....the terms and conditions set out in this document as amended from time to time in accordance with clause 10.6.

**"Contract"** .....the contract between the Supplier and the Customer for the sale and purchase of the Goods in accordance with these Conditions.

**"Customer"** .....the person or firm who purchases the Goods from the Supplier

**"Force Majeure Event"** .....has the meaning given in clause 9.

**"Goods"** .....the goods (or any part of them) set out in the Order.

**"Order"** .....the Customer's order for the Goods, as set out in the Customer's purchase order form, the Customer's written acceptance of the Supplier's quotation, or overleaf, as the case may be.

**"Specification"** .....any specification for the Goods, including any related plans and drawings, that is supplied to the Supplier by the Customer, or produced by the Supplier and agreed in writing by the Customer.

**"Supplier"** .....Metpro Limited (registered in England and Wales with company number 2849037).

1.1 **Construction.** In these Conditions, the following rules apply:

1.1.1 A **person** includes a natural person, corporate or unincorporated body (whether or not having separate legal personality).

1.1.2 A reference to a party includes its personal representatives, successors or permitted assigns.

1.1.3 A reference to a statute or statutory provision is a reference to such statute or provision as amended or re-enacted. A reference to a statute or statutory provision includes any subordinate legislation made under that statute or statutory provision, as amended or re-enacted.

1.1.4 Any phrase introduced by the terms **including, include, in particular** or any similar expression shall be construed as illustrative and shall not limit the sense of the words preceding those terms.

1.1.5 A reference to **writing** or **written** includes faxes.

2 **Basis of contract**

2.1 These Conditions apply to the Contract to the exclusion of any other terms that the Customer seeks to impose or incorporate, or which are implied by trade, custom, practice or course of dealing.

2.2 The Order constitutes an offer by the Customer to purchase the Goods in accordance with these Conditions. The Customer shall ensure that the terms of the Order and any relevant Specification are complete and accurate.

2.3 The Order shall only be deemed to be accepted when the Supplier issues a written acceptance of the Order, at which point the Contract shall come into existence.

2.4 The Contract constitutes the entire agreement between the parties. The Customer acknowledges that it has not relied on any statement, promise or representation made or given by or on behalf of the Supplier which is not set out in the Contract. Any samples, drawings, descriptive matter, or advertising issued by the Supplier and any descriptions or illustrations contained in the Supplier's catalogues or brochures are issued or published for the sole purpose of giving an approximate idea of the Goods described in them. They shall not form part of the Contract or any other contract between the Supplier and the Customer for the sale of the Goods.

2.5 A quotation for the Goods given by the Supplier shall not constitute an offer. A quotation shall only be valid for a period of 30 Business Days from its date of issue.

3 **Delivery**

3.1 The Supplier shall ensure that:

3.1.1 each delivery of the Goods is accompanied by a delivery note which shows the date of the Order, all relevant Customer and Supplier reference numbers, the type and quantity of the Goods (including the code number of the Goods, where applicable), special storage instructions (if any) and, if the Order is being delivered by instalments, the outstanding balance of Goods remaining to be delivered; and

3.1.2 if the Supplier requires the Customer to return any packaging materials to the Supplier, that fact is clearly stated on the delivery note. The Customer shall make any such packaging materials available for collection at such times as the Supplier shall reasonably request. Returns of packaging materials shall be at the Supplier's expense.

3.2 The Supplier shall deliver the Goods to the location set out in the Order or such other location as the parties may agree at any time after the Supplier notifies the Customer that the Goods are ready.

3.3 Delivery of the Goods shall be completed on the completion of loading of the Goods at the Delivery Location.

3.4 Any dates quoted for delivery are approximate only, and the time of delivery is not of the essence. The Supplier shall not be liable for any delay in delivery of the Goods that is caused by a Force Majeure event or the Customer's failure to provide the Supplier with adequate delivery instructions or any other instructions that are relevant to the supply of the Goods.

3.5 If the Supplier fails to deliver the Goods, its liability shall be limited to the costs and expenses incurred by the Customer in obtaining replacement goods of similar description and quality in the cheapest market available, less the price of the Goods. The Supplier shall have no liability for any failure to deliver the Goods to the extent that such failure is caused by a Force Majeure Event or the Customer's failure to provide the Supplier with adequate delivery instructions or any other instructions that are relevant to the supply of the Goods.

3.6 If the Customer fails to accept delivery of the Goods within 3 Business Days of the Supplier notifying the Customer that the Goods are ready, then, except where such failure or delay is caused by a Force Majeure Event or the Supplier's failure to comply with its obligations under the Contract:

3.6.1 delivery of the Goods shall be deemed to have been completed at 9.00 am on the third Business Day following the day on which the Supplier notified the Customer that the Goods were ready; and

3.6.2 the Supplier shall store the Goods until delivery takes place, and charge the Customer for all related costs and expenses (including insurance).

3.7 If 10 Business Days after the Supplier notified the Customer that the Goods were ready for delivery the Customer has not accepted delivery of them, the Supplier may resell or otherwise dispose of part or all of the Goods and, after deducting reasonable storage and selling costs, account to the Customer for any excess over the price of the Goods or charge the Customer for any shortfall below the price of the Goods.

3.8 The Customer shall not be entitled to reject the Goods if the Supplier delivers up to and including 5% more or less than the quantity of Goods ordered, but a pro rata adjustment shall be made to the Order invoice on receipt of notice from the Customer that the wrong quantity of Goods was delivered.

3.9 The Supplier may deliver the Goods by instalments, which shall be invoiced and paid for separately. Each instalment shall constitute a separate Contract. Any delay in delivery or defect in an instalment shall not entitle the Customer to cancel any other instalment.

## 4 Quality

- 4.1 The Supplier warrants that on delivery, and for a period of 12 months from the date of delivery the Goods shall:
- 4.1.1 conform in all material respects with their description and any applicable Specification; and
- 4.1.2 be free from material defects in design, material and workmanship.
- 4.2 Subject to clause 4.3, if:
- 4.2.1 the Customer gives notice in writing to the Supplier during the warranty period within a reasonable time of discovery that some or all of the Goods do not comply with the warranty set out in clause 4.1; and
- 4.2.2 the Supplier is given a reasonable opportunity of examining such Goods; and
- 4.2.3 the Customer (if asked to do so by the Supplier) returns such Goods to the Supplier's place of business at the cost, the supplier shall, at its option, repair or replace the defective Goods, or refund the price of the defective Goods and the cost of their return in full.
- 4.3 The Supplier shall not be liable for Goods' failure to comply with the warranty set out in clause 4.1 if:
- 4.3.1 the Customer makes any further use of such Goods after giving notice in accordance with clause 4.2; or
- 4.3.2 the defect arises because the Customer failed to follow the Supplier's oral or written instructions as to the storage, commissioning, installation, use and maintenance of the Goods or (if there are none) good trade practice; or
- 4.3.3 the defect arises as a result of the Supplier following any drawing, design or specification supplied by the Customer; or
- 4.3.4 the Customer alters or repairs such Goods without the written consent of the Supplier; or
- 4.3.5 the defect arises as a result of fair wear and tear, wilful damage, negligence, or abnormal storage or working conditions.
- 4.4 Except as provided in this clause 3.9, the Supplier shall have no liability to the Customer in respect of the Goods' failure to comply with the warranty set out in clause 4.1.
- 4.5 Except as set out in these Conditions, all warranties, conditions and other terms implied by statute or common law are, to the fullest extent permitted by law, excluded from the Contract.
- 4.6 These Conditions shall apply to any repaired or replacement Goods supplied by the Supplier.

## 5 Title and risk

- 5.1 The risk in the Goods shall pass to the Customer on completion of delivery.
- 5.2 Title to the Goods shall not pass to the Customer until the Supplier has received payment in full (in cash or cleared funds) for:
- 5.2.1 the Goods; and
- 5.2.2 all other sums which are or which become due to the Supplier for sales of the Goods or any other products to the Customer.
- 5.3 Until title to the Goods has passed to the Customer, the Customer shall:
- 5.3.1 hold the Goods on a fiduciary basis as the Supplier's bailee;
- 5.3.2 store the Goods separately from all other goods held by the Customer so that they remain readily identifiable as the Supplier's property;
- 5.3.3 not remove, deface or obscure any identifying mark or packaging on or relating to the Goods;
- 5.3.4 maintain the Goods in satisfactory condition and keep them insured against all risks for their full price from the date of delivery;
- 5.3.5 notify the Supplier immediately if it becomes subject to any of the events listed in clause 7.2; and
- 5.3.6 give the Supplier such information relating to the Goods as the Supplier may require from time to time, but the Customer may resell or use the Goods in the ordinary course of its business.
- 5.4 If before title to the Goods passes to the Customer the Customer becomes subject to any of the events listed in clause 7.2, or the Supplier reasonably believes that any such event is about to happen and notifies the Customer accordingly, then, provided that the Goods have not been resold, or irrevocably incorporated into another product, and without limiting any other right or remedy the Supplier may have, the Supplier may at any time require the Customer to deliver up the Goods and, if the Customer fails to do so promptly, enter any premises of the Customer or of any third party where the Goods are stored in order to recover them.

## 6 Price and payment

- 6.1 The price of the Goods shall be the price set out in the Order, or, if no price is quoted, the price set out in the Supplier's published price list in force as at the date of delivery.
- 6.2 The Supplier may, by giving notice to the Customer at any time up to 20 Business Days before delivery, increase the price of the Goods to reflect any increase in the cost of the Goods that is due to:
- 6.2.1 any factor beyond the Supplier's control (including foreign exchange fluctuations, increases in taxes and duties, and increases in labour, materials and other manufacturing costs);
- 6.2.2 any request by the Customer to change the delivery date(s), quantities or types of Goods ordered, or the Specification; or
- 6.2.3 any delay caused by any instructions of the Customer or failure of the Customer to give the Supplier adequate or accurate information or instructions.
- 6.3 The price of the Goods is exclusive of the costs and charges of packaging, insurance and transport of the Goods [which shall be paid by the Customer when it pays for the Goods].
- 6.4 The price of the Goods is exclusive of amounts in respect of value added tax (VAT). The Customer shall, on receipt of a valid VAT invoice from the Supplier, pay to the Supplier such additional amounts in respect of VAT as are chargeable on the supply of the Goods.
- 6.5 The Supplier may invoice the Customer for the Goods on or at any time after the completion of delivery.
- 6.6 The Customer shall pay the invoice in full and in cleared funds by the end of the month following the month the invoice was dated. Payment shall be made to the bank account nominated in writing by the Supplier. Time of payment is of the essence.
- 6.7 If the Customer fails to make any payment due to the Supplier under the Contract by the due date for payment (**due date**), then the Customer shall pay interest on the overdue amount at the rate of 4% per annum above Royal Bank of Scotland's base lending rate from time to time. Such interest shall accrue on a daily basis from the due date until the date of actual payment of the overdue amount, whether before or after judgment. The Customer shall pay the interest together with the overdue amount.
- 6.8 The Customer shall pay all amounts due under the Contract in full without any deduction or withholding except as required by law and the Customer shall not be entitled to assert any credit, set-off or counterclaim against the Supplier in order to justify withholding payment of any such amount in whole or in part. The Supplier may at any time, without limiting any other rights or remedies it may have, set off any amount owing to it by the Customer against any amount payable by the Supplier to the Customer.

## 7 Customer's insolvency or incapacity

- 7.1 If the Customer becomes subject to any of the events listed in clause 7.2, or the Supplier reasonably believes that the Customer is about to become subject to any of them and notifies the Customer accordingly, then, without limiting any other right or remedy available to the Supplier, the Supplier may cancel or suspend all further deliveries under the Contract or under any other contract between the Customer and the Supplier without incurring any liability to the Customer, and all outstanding sums in respect of Goods delivered to the Customer shall become immediately due.
- 7.2 For the purposes of clause 7.1, the relevant events are:
- 7.2.1 the Customer suspends, or threatens to suspend, payment of its debts or is unable to pay its debts as they fall due or admits inability to pay its debts or (being a company) is deemed unable to pay its debts within the meaning of section 123 of the Insolvency Act 1986, or (being an individual) is deemed either unable to pay its debts or as having no reasonable prospect of so doing, in either case, within the meaning of section 268 of the Insolvency Act 1986, or (being a partnership) has any partner to whom any of the foregoing apply; or

- 7.2.2 the Customer commences negotiations with all or any class of its creditors with a view to rescheduling any of its debts, or makes a proposal for or enters into any compromise or arrangement with its creditors; or
- 7.2.3 (being an individual) the Customer is the subject of a bankruptcy petition or order; or
- 7.2.4 a creditor or encumbrancer of the Customer attaches or takes possession of, or a distress, execution, sequestration or other such process is levied or enforced on or sued against, the whole or any part of its assets and such attachment or process is not discharged within 14 days; or
- 7.2.5 (being a company) an application is made to court, or an order is made, for the appointment of an administrator or if a notice of intention to appoint an administrator is given or if an administrator is appointed over the Customer; or
- 7.2.6 (being a company) a floating charge holder over the assets of the Customer has become entitled to appoint or has appointed an administrative receiver; or
- 7.2.7 a person becomes entitled to appoint a receiver over the assets of the Customer or a receiver is appointed over the assets of the Customer; or
- 7.2.8 any event occurs, or proceeding is taken, with respect to the Customer in any jurisdiction to which it is subject that has an effect equivalent or similar to any of the events mentioned in clause 7.2.1 to clause 7.2.7 (inclusive); or
- 7.2.9 the Customer suspends, threatens to suspend, ceases or threatens to cease to carry on all or substantially the whole of its business; or
- 7.2.10 the financial position of the Supplier deteriorates to such an extent that in the opinion of the Customer the capability of the Seller adequately to fulfil its obligations under the Contract has been placed in jeopardy.
- 7.2.11 (being an individual) the Customer dies or, by reason of illness or incapacity (whether mental or physical), is incapable of managing his or her own affairs or becomes a patient under any mental health legislation.

## 8 Limitation of liability

- 8.1 Nothing in these Conditions shall limit or exclude the Supplier's liability for:
  - 8.1.1 death or personal injury caused by its negligence, or the negligence of its employees, agents or subcontractors (as applicable);
  - 8.1.2 fraud or fraudulent misrepresentation; or
  - 8.1.3 breach of the terms implied by section 12 of the Sale of Goods Act 1979; or
  - 8.1.4 defective products under the Consumer Protection Act 1987; or
  - 8.1.5 any matter in respect of which it would be unlawful for the Supplier to exclude or restrict liability.
- 8.2 Subject to clause 8.1:
  - 8.2.1 the Supplier shall not be liable to the Customer, whether in contract, tort (including negligence), breach of statutory duty, or otherwise, for any loss of profit or indirect or consequential loss arising under or in connection with the Contract (including any losses that may result from a deliberate breach of the Contract by the Supplier, its employees, agents or subcontractors); and
  - 8.2.2 the Supplier's total liability to the Customer in respect of all other losses arising under or in connection with the Contract, whether in contract, tort (including negligence), breach of statutory duty, or otherwise, including losses caused by a deliberate personal a deliberate breach of the Contract by the Supplier, its employees, agents or subcontractors shall not exceed 100% of the price of the Goods.

## 9 Force majeure

Neither party shall be liable for any failure or delay in performing its obligations under the Contract to the extent that such failure or delay is caused by a Force Majeure Event. A **Force Majeure Event** means any event beyond a party's reasonable control, which by its nature could not have been foreseen, or, if it could have been foreseen, was unavoidable, including strikes, lock-outs or other industrial disputes (whether involving its own workforce or a third party's), failure of energy sources or transport network, acts of God, war, terrorism, riot, civil commotion, interference by civil or military authorities, national or international calamity, armed conflict, malicious damage, breakdown of plant or machinery, nuclear, chemical or biological contamination, sonic boom, explosions, collapse of building structures, fires, floods, storms, earthquakes, loss at sea, epidemics or similar events, natural disasters or extreme adverse weather conditions, or default of suppliers or subcontractors.

## 10 General

### 10.1 Assignment and subcontracting

- 10.1.1 The Supplier may at any time assign, transfer, charge, subcontract or deal in any other manner with all or any of its rights or obligations under the Contract.
- 10.1.2 The Customer may not assign, transfer, charge, subcontract or deal in any other manner with all or any of its rights or obligations under the Contract without the prior written consent of the Supplier.

### 10.2 Notices

- 10.2.1 Any notice or other communication given to a party under or in connection with the Contract shall be in writing, addressed to that party at its registered office (if it is a company) or its principal place of business (in any other case) or such other address as that party may have specified to the other party in writing in accordance with this clause, and shall be delivered personally, sent by pre-paid first-class post, recorded delivery, commercial courier, fax.
- 10.2.2 A notice or other communication shall be deemed to have been received: if delivered personally, when left at the address referred to in clause 10.2.1; if sent by pre-paid first-class post or recorded delivery, at 9.00 am on the second Business Day after posting; if delivered by commercial courier, on the date and at the time that the courier's delivery receipt is signed; or, if sent by fax, one Business Day after transmission.
- 10.2.3 The provisions of this clause shall not apply to the service of any proceedings or other documents in any legal action.

### 10.3 Severance

- 10.3.1 If any court or competent authority finds that any provision of the Contract (or part of any provision) is invalid, illegal or unenforceable, that provision or part-provision shall, to the extent required, be deemed to be deleted, and the validity and enforceability of the other provisions of the Contract shall not be affected.
- 10.3.2 If any invalid, unenforceable or illegal provision of the Contract would be valid, enforceable and legal if some part of it were deleted, the provision shall apply with the minimum modification necessary to make it legal, valid and enforceable.

- 10.4 **Waiver.** A waiver of any right or remedy under the Contract is only effective if given in writing and shall not be deemed a waiver of any subsequent breach or default. No failure or delay by a party to exercise any right or remedy provided under the Contract or by law shall constitute a waiver of that or any other right or remedy, nor shall it preclude or restrict the further exercise of that or any other right or remedy. No single or partial exercise of such right or remedy shall preclude or restrict the further exercise of that or any other right or remedy.

- 10.5 **Third party rights.** A person who is not a party to the Contract shall not have any rights under or in connection with it.

- 10.6 Any variation to the Contract, including the introduction of any additional terms and conditions, shall only be binding when agreed in writing and signed by the Customer.

- 10.7 **Governing law and jurisdiction.** The Contract, and any dispute or claim arising out of or in connection with it or its subject matter or formation (including non-contractual disputes or claims), shall be governed by, and construed in accordance with, English law, and the parties irrevocably submit to the exclusive jurisdiction of the courts of England and Wales.



A Division of Metpro Limited

- Mechanical & Electrical Installation Accessories
- Conduit Fittings and Accessories
  - Switch & Socket Boxes
  - Adaptable Boxes
  - Channel Support Fittings & Accessories
  - Support Brackets



Metpro Limited  
Unit 7, CMT Trading Estate, Broadwell Road, Oldbury, West Midlands, B69 4BQ  
Tel: +44 (0) 121 552 2100  
Fax: +44 (0) 121 552 3363  
Email: [sales@metpro.co.uk](mailto:sales@metpro.co.uk)  
[www.metpro.co.uk](http://www.metpro.co.uk)