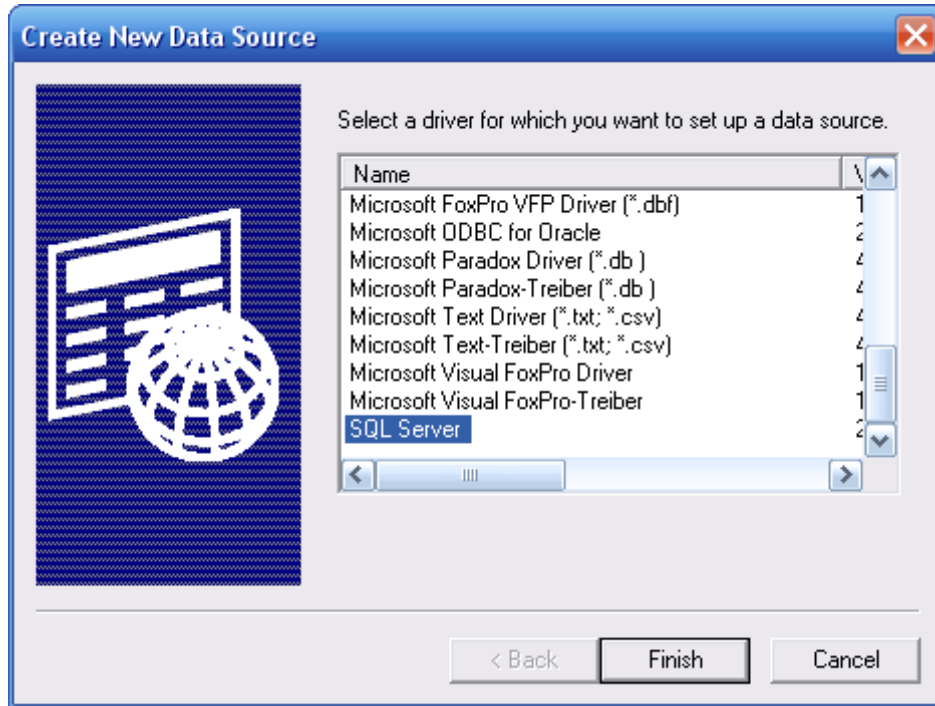
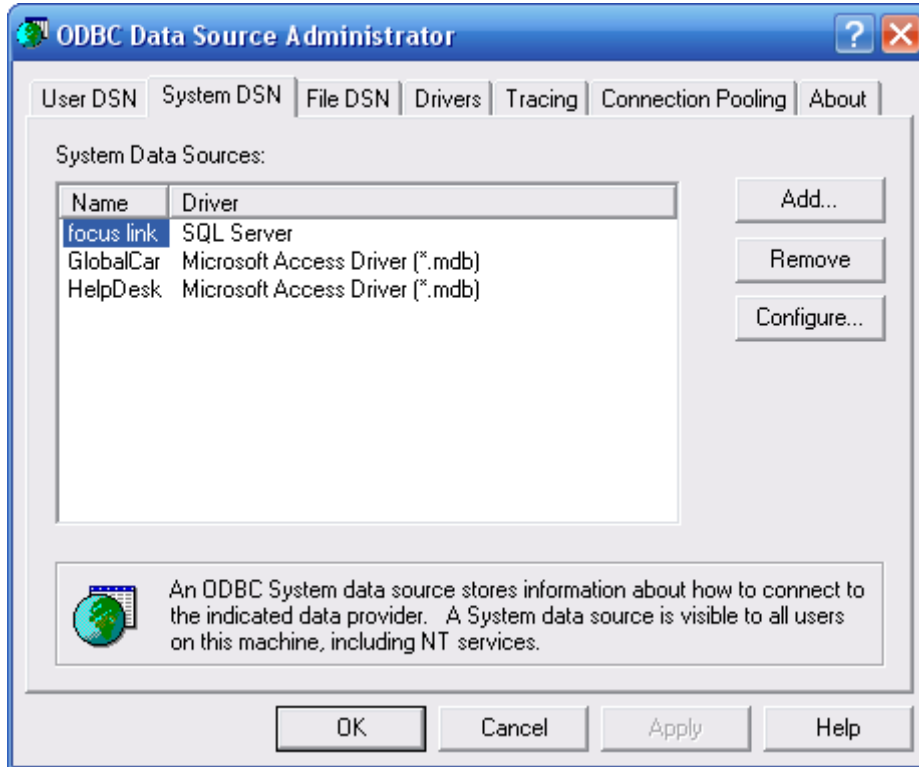


Setting Up ODBC link to Focus database

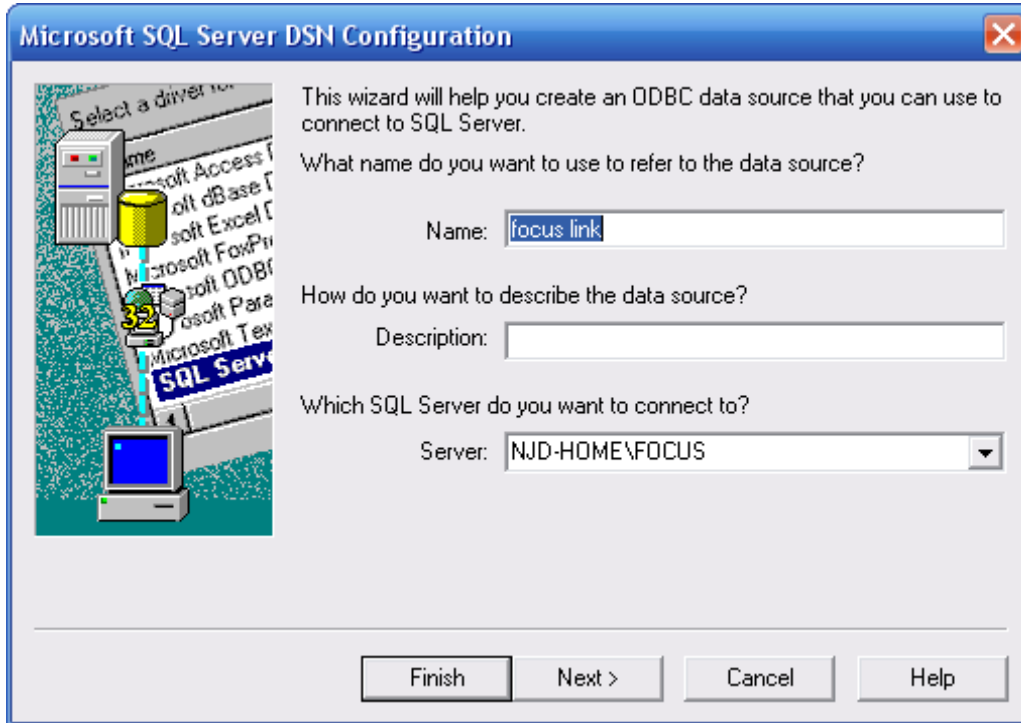
Go to Control Panel>Administrative Tools>Data Sources (ODBC). Select *System DNS* and then *Add*. Select *SQL Server*:



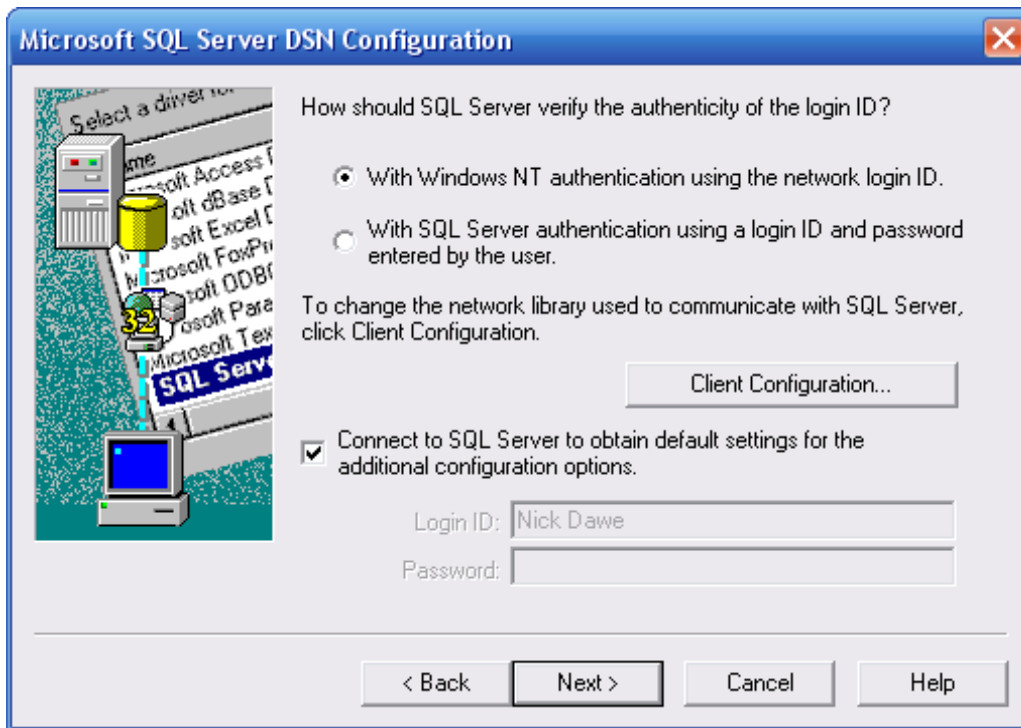
Give the link a name:



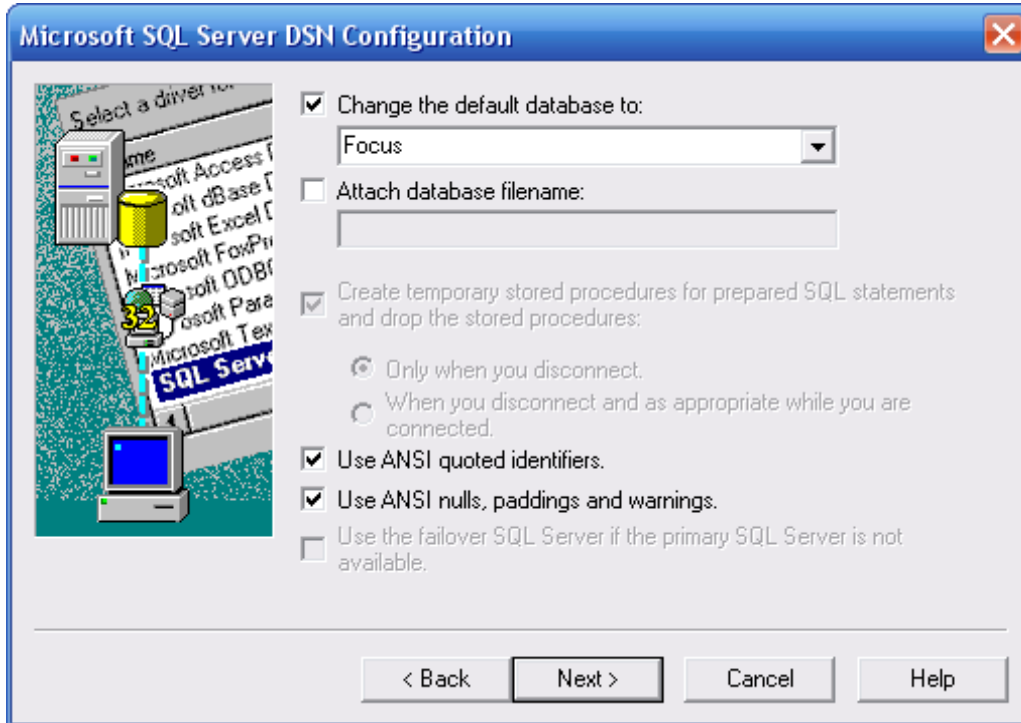
Select the SQL Server that Focus is running on:



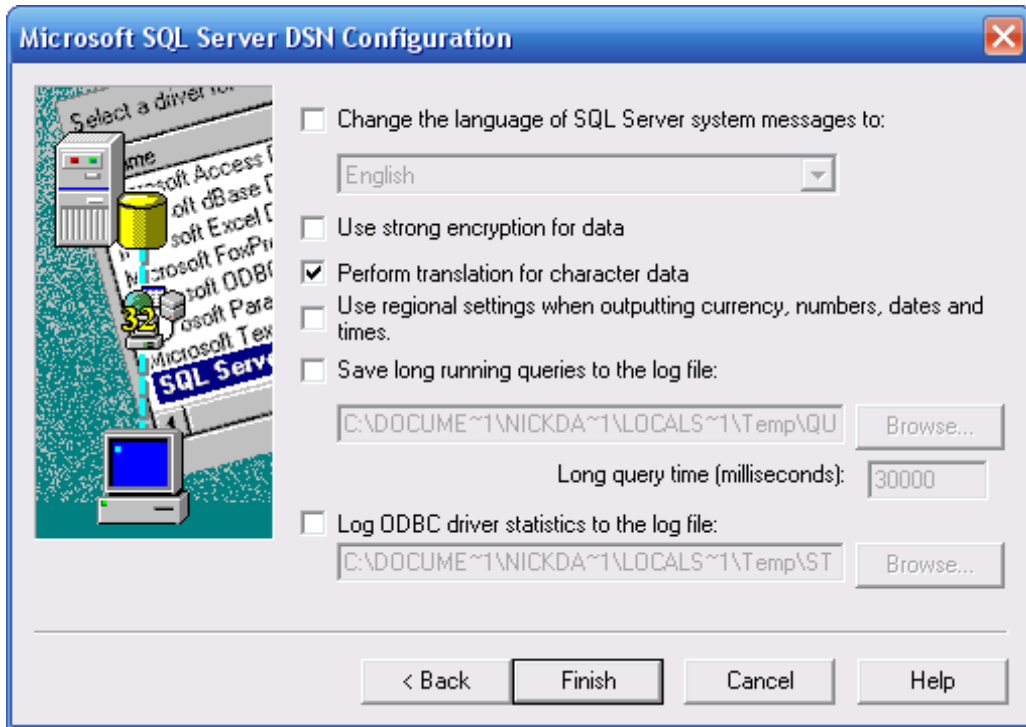
Select *Windows NT Authentication*:



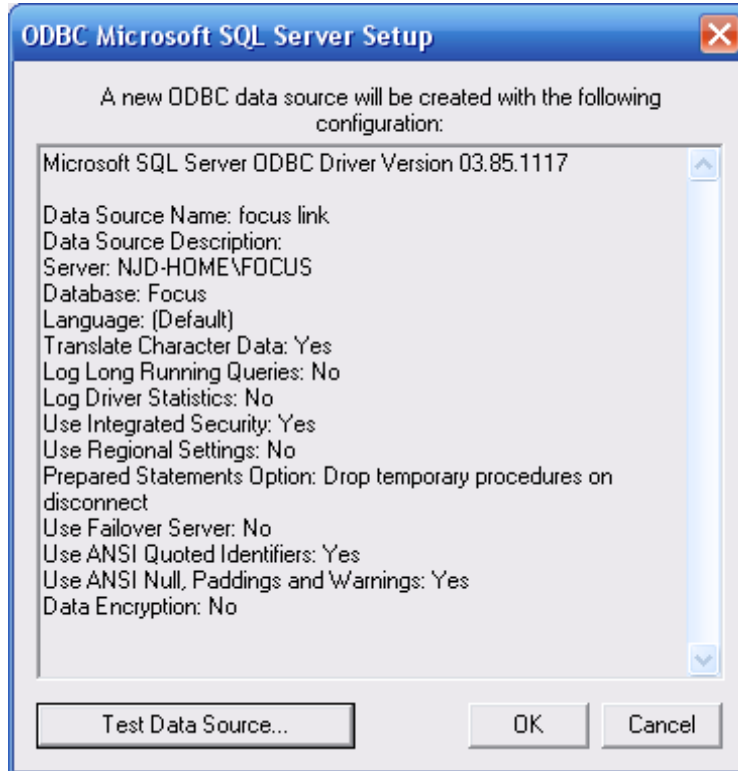
Select *Focus* as the default database:



Click on *Finish*:



Click on *OK*:



06/02/08