

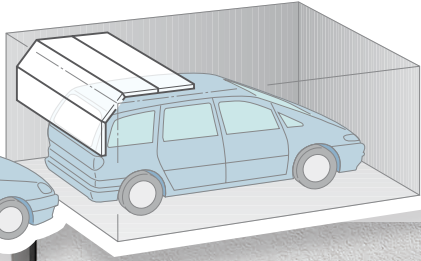
// NEW: ThermoFrame for added savings on energy cost



Series 2000 Sectional Garage Doors

The finest sectional doors offering nothing but benefits





Sectional doors open vertically upwards and are suspended under the ceiling to save space. You can make full use of the space inside and in front of the garage for parking.



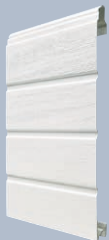
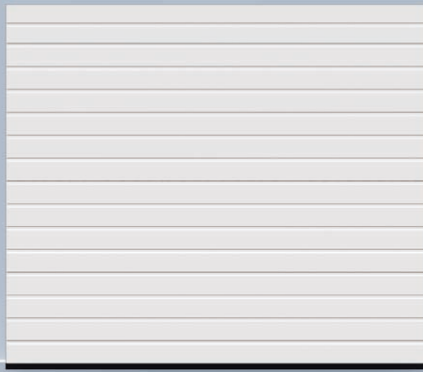
Hörmann automatic sectional doors

offering greater convenience and security

You can operate a Hörmann automatic door as conveniently as your TV set. On the press of a button, you drive into your garage, protected from all weathers. When it's dark, the direct route affords you greater safety and security. It goes without saying that Hörmann doors and operators are tested by the TÜV (German Technical Inspectorate) as a single safety unit.



S-ribbed



LTE 40
Single-skinned



Woodgrain



42 mm

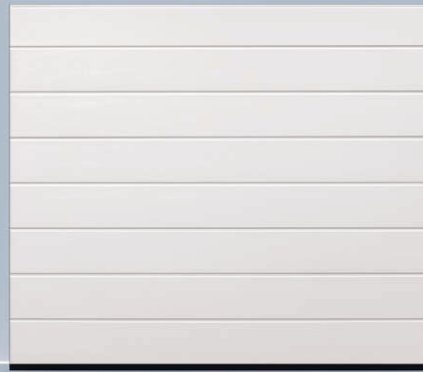


Woodgrain

LPU 40
Double-skinned
Door leaf 42 mm thick



M-ribbed



LTE 40
Single-skinned



Woodgrain



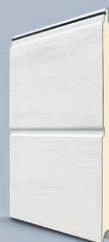
42 mm



Woodgrain

EPU 40
Double-skinned
Door leaf 42/20 mm thick

42 mm



42 mm



Woodgrain



Silkgrain



Micrograin

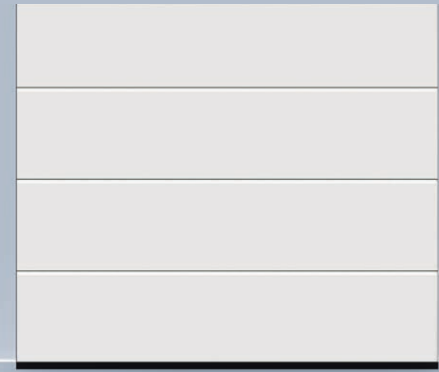


Decograin

LPU 40
Double-skinned
Door leaf 42 mm thick



L-ribbed



42 mm

LPU 40
Double-skinned
Door leaf 42 mm thick



Silkgrain



Micrograin



Decograin
Titan Metallic

LPU 40
Double-skinned
Door leaf 42 mm thick



Woodgrain



Silkgrain



Micrograin



Decograin



S-panelled



LTE 40
Single-skinned



Woodgrain



42 mm **EPU 40**
Double-skinned
Door leaf 42/20 mm thick



Woodgrain

42 mm



LPU 40
Double-skinned
Door leaf 42 mm thick

42 mm



Woodgrain



Decograin

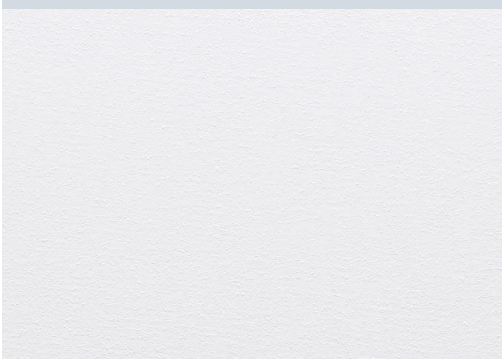
A question of taste

Regardless of the colour you select – you can choose between four surface finishes: **Woodgrain, Silkgrain, Micrograin and Decograin.**



Woodgrain surface finish

On this robust surface with an authentic sawn timber look, minor scratches can be repaired without leaving any visible sign of damage.



Silkgrain surface finish

This silky-smooth, elegant surface particularly fits well with modern architecture.



Micrograin surface finish

This surface features a wave profile that is embossed into smooth steel, producing attractive light and shadow effects.



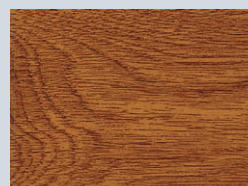
Decograin Light Oak



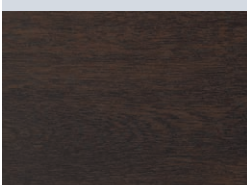
Decograin Dark Oak



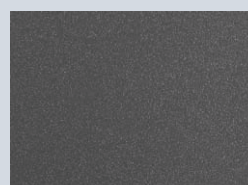
Decograin Rosewood



Decograin Golden Oak



Decograin Night Oak



Decograin Titan Metallic



Decograin surface finish

UV-resistant synthetic foil coating on the outside with unique embossed graining conveying the authentic character of timber.

A vast array of colours

Integrate your garage door into your home's colour concept. All steel doors are supplied as standard in Traffic White RAL 9016. Double-skinned garage doors are additionally available in 15 inexpensive factory colours. Please note all colours below are made to order only.

Standard Colours



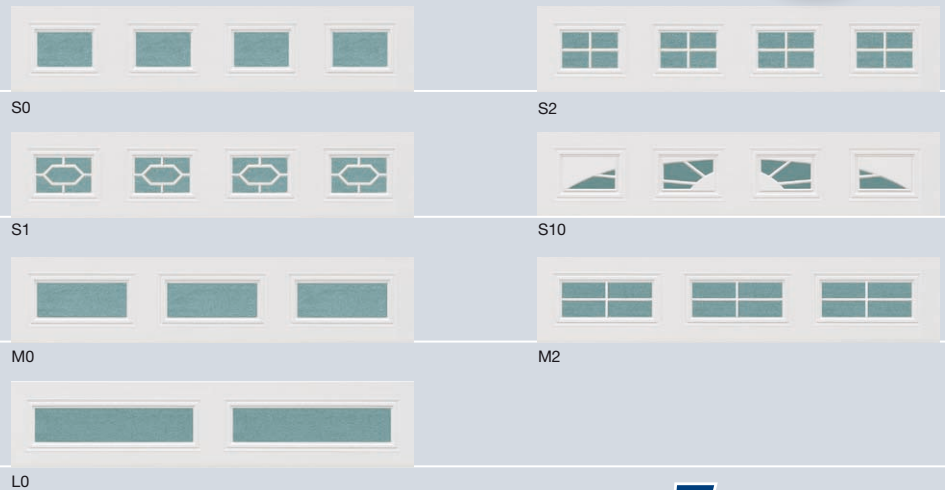
* not available as part of our UK spray programme, German factory orders only. Due to limitations in printing process, colours cannot be considered binding.

Around 200 RAL colours available to special order.



Your choice of glazings

Incorporate glazing to give your garage an individual look or to match the architectural style of your home. The DURATEC synthetic double glazing in Hörmann's sectional doors is exceptionally resistant to scratches even after repeated washing and heavy use.



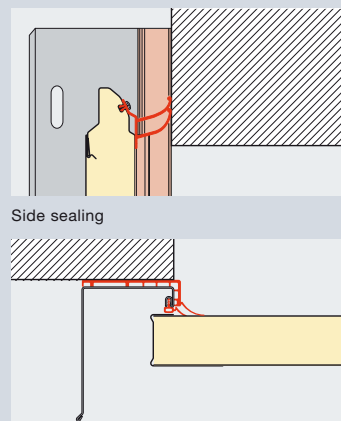
ThermoFrame

With the garage being attached to the house we recommend to fit a well insulated garage door. The new ThermoFrame frame improves the already good insulation characteristics of the double-skinned Hörmann garage doors even more and adds to energy savings.



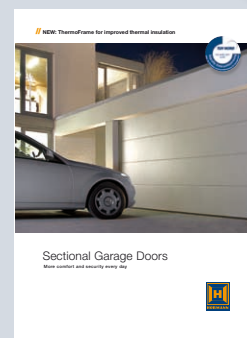
Frame cladding

We offer a frame cladding to match the colour of the door.



Lintel sealing

* With an LPU sectional garage door surface of 10 sqm.



For further information ask your specialist dealer for this brochure or visit www.hormann.co.uk

Choose between two innovative Hörmann operators



ProMatic

SupraMatic



The good-value starter model as an introduction to Hörmann's premium quality, for a maximum of 20 door cycles* (open/close) per day. Opening speed: 14 cm/s.

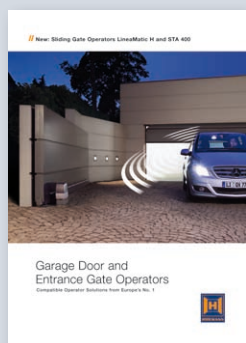
The supra-fast operator with an array of additional functions for a maximum of 50 door cycles* (open/close) per day. Opening speed: 22 cm/s.

* based on the ProMatic P

* based on the SupraMatic P

Proven Operator Technology

- 868.3 MHz radio frequency with a stable range
- Every operator comes with a 4-button hand transmitter and a micro 2-button hand transmitter
- Integral receiver
- Automatic locking provides effective protection against forced opening. A unique mechanical device that remains functional even in the event of a power failure.
- On encountering an obstruction, a reliable automatic cut-out stops the door immediately
- A "soft" start and "soft" stop minimises wear and tear on both, the door and operator
- Patented toothed belt is maintenance-free
- Emergency release from inside
- Easy to install - everything is precisely prepared



Further information on Hörmann operators for garage doors and entrance gates can be found in our specialist brochures or on our website at www.hormann.co.uk

The Manually Operated Sectional Door

Where a beautiful handle places a special accent



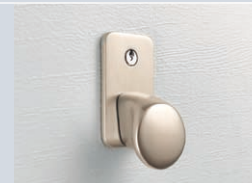
With these handles, developed by designers and safety experts, you hold a quality in your hand that, in this form, no other manufacturer can match. Select the handle of your choice from seven shapely variants to match and add it to your order. Your Hörmann specialist dealer will be more than happy to fit it for you.



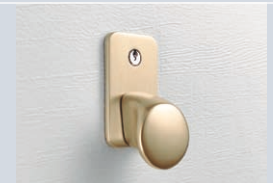
Black plastic



Cast aluminium, white (similar to Traffic white RAL 9016)



Silver cast aluminium



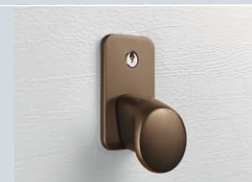
Brass cast aluminium



Polished stainless steel



Brushed stainless steel



Brown cast aluminium



Manually operated sectional doors are more burglar-proof thanks to latch locking. In this lock, a sturdy automatic latching spring disc grips round a solid steel bolt to securely retain the door. Intruders don't stand a chance!

Overview of Series 2000 sectional garage door styles and sizes

Door Sizes		S-ribbed		M-ribbed			L-ribbed	S-panelled		
		LTE	LPU	LTE	EPU	LPU	LPU	LTE	EPU	LPU
Imperial	Metric									
6'10" × 6'2"	2083 × 1875	•	•	•	•	•	•	•	•	•
6'6"	2083 × 2000	-	•	-	•	•	•	-	•	•
6'10"	2083 × 2080	•	•	•	•	•	•	•	•	-
7'0" × 6'6"	2134 × 2000	•	•	•	•	•	•	•	•	•
7'0"	2286 × 2125	•	•	•	•	•	•	•	•	•
7'6" × 6'6"	2286 × 2000	•	•	•	•	•	•	•	•	•
7'0"	2286 × 2125	•	•	•	•	•	•	•	•	•
7'4"	2286 × 2250	•	•	•	•	•	•	•	•	•
7'9"	2286 × 2375	•	•	•	•	•	•	•	•	•
8'2"	2286 × 2500	•	•	•	•	•	•	•	•	•
8'0" × 6'6"	2438 × 2000	•	•	•	•	•	•	•	•	•
7'0"	2438 × 2125	•	•	•	•	•	•	•	•	•
7'4"	2438 × 2250	•	•	•	•	•	•	•	•	•
7'9"	2438 × 2375	•	•	•	•	•	•	•	•	•
8'2"	2438 × 2500	•	•	•	•	•	•	•	•	•
8'6" × 6'6"	2591 × 2000	•	•	•	•	•	•	•	•	•
7'0"	2591 × 2125	•	•	•	•	•	•	•	•	•
9'0" × 6'6"	2743 × 2000	•	•	•	•	•	•	•	•	•
7'0"	2743 × 2125	•	•	•	•	•	•	•	•	•
9'6" × 6'6"	2896 × 2000	•	•	•	•	•	•	•	•	•
7'0"	2896 × 2125	•	•	•	•	•	•	•	•	•
10'0" × 6'6"	3048 × 2000	•	•	•	•	•	•	•	•	•
7'0"	3048 × 2125	•	•	•	•	•	•	•	•	•
11'0" × 6'6"	3353 × 2000	•	•	-	•	•	•	-	•	•
7'0"	3353 × 2125	•	•	-	•	•	•	-	•	•
12'0" × 6'6"	3658 × 2000	•	•	-	•	•	•	-	•	•
7'0"	3658 × 2125	•	•	-	•	•	•	-	•	•
13'0" × 6'6"	3962 × 2000	•	•	-	•	•	•	-	•	•
7'0"	3962 × 2125	•	•	-	•	•	•	-	•	•
14'0" × 6'6"	4267 × 2000	•	•	-	•	•	•	-	•	•
7'0"	4267 × 2125	•	•	-	•	•	•	-	•	•
14'6" × 6'6"	4420 × 2000	•	•	-	•	•	•	-	•	•
7'0"	4420 × 2125	•	•	-	•	•	•	-	•	•
15'0" × 6'6"	4572 × 2000	•	•	-	•	•	•	-	•	•
7'0"	4572 × 2125	•	•	-	•	•	•	-	•	•
15'6" × 6'6"	4724 × 2000	•	•	-	•	•	•	-	•	•
7'0"	4724 × 2125	•	•	-	•	•	•	-	•	•
16'0" × 6'6"	4877 × 2000	•	•	-	•	•	•	-	•	•
7'0"	4877 × 2125	•	•	-	•	•	•	-	•	•

Door leaf thicknesses

LTE	single-skinned
EPU	double-skinned 42/20 mm
LPU	double-skinned 42 mm

Surface finishes

 Woodgrain	 Micrograin	 Decograin Light Oak	 Decograin Rosewood	 Decograin Night Oak
 Silkgrain	 Colour options available	 Decograin Dark Oak	 Decograin Golden Oak	 Decograin Titan Metallic

Hörmann: Quality without Compromise



Hörmann KG Amshausen



Hörmann KG Antriebstechnik



Hörmann KG Brandis



Hörmann KG Brockhagen



Hörmann KG Dissen



Hörmann KG Eckelhausen



Hörmann KG Freisen



Hörmann KG Ichtershausen



Hörmann KG Werne



Hörmann Genk NV, Belgium



Hörmann Alkmaar B.V., Netherlands



Hörmann Legnica Sp. z o.o., Poland



Hörmann Beijing, China



Hörmann Tianjin, China



Hörmann LLC, Montgomery IL, USA



Hörmann Flexon, Leetsdale PA, USA

Hörmann is the only manufacturer worldwide that offers you a complete range of all major building products from one source. We manufacture in highly-specialised factories using the latest production technologies. The close-meshed network of sales and service companies throughout Europe, and activities in the USA and China, make Hörmann your strong partner for first-class building products, offering “Quality without Compromise”.

GARAGE DOORS

OPERATORS

INDUSTRIAL DOORS

LOADING EQUIPMENT

HINGED DOORS

DOOR FRAMES

Hörmann (UK) Ltd, Gee Road, Coalville, Leicestershire LE67 4JW
Phone (01530) 513000, Fax (01530) 513001
www.hormann.co.uk

