



oil pollution environmental control ltd

www.opec.co.uk info@opec.co.uk

1 Nab Lane Batley West Yorkshire WF17 9NG United Kingdom

OM SERIES II

TYPE 12



CONCEPT + DESIGN

The OM Series II Type 12 Offshore Skimming System is designed to be deployed from vessels of opportunity and any vessel equipped with a hydraulic crane of adequate capacity may be used.



- FOR USE IN DOCKS, HARBOURS AND CLOSE INSHORE CLEAN-UP OPERATIONS.
- THE PACKAGE IS SELF-CONTAINED IN A METAL STORAGE CONTAINER FOR EASY HANDLING AND STORING OF THE SYSTEM WHEN NOT IN USE.
- THE OCEAN MOP SYSTEM IS BASED ON THE HIGHLY SUCCESSFUL E-SERIES RANGE OF PRODUCTS.
- IT CAN VARY IN SIZE AND PERFORMANCE TO SUIT INDIVIDUAL NEEDS RECOVERING IN EXCESS OF 72 TONNES AN HOUR OF OIL.
- THE OPEC MOP HANDLES ANY DEBRIS ON THE WATER SURFACE.
- USE OF A HYDRAULIC CRANE ENABLES GREAT VERSATILITY IN CLEANING OILY WATER.

SPECIFICATION

General Description

The system consists of 6 elements:

- Skimmer head
- Diesel driven power pack
- Oil transfer pump
- Operator console
- Umbilicals
- System Container

1. Skimmer Head

The skimmer head of the OM 12 consists of 2 standard 'E' Series mop drive units mounted on a specially designed carrier which incorporates a sump. The skimmer head is suspended from the crane with the mops allowed to settle on the surface in the material that has to be recovered. The mop drive units are powered by variable speed hydraulic motors fed from a power pack.

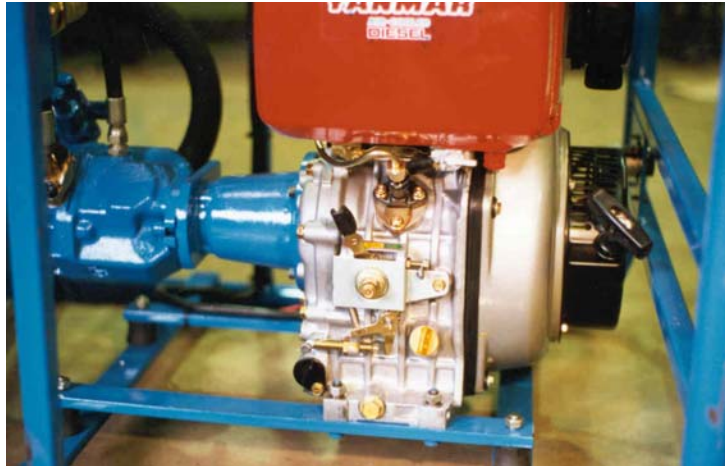


Detailed Specification:

Nominal recovery rate (max)	15	cubic metres/hour
Number of drive heads	2	
Diameter of main rollers	144	mm
Max. speed of rollers	120	r.p.m
Length	1150	mm
Height	900	mm
Width	850	mm
Weight	160	kg

2. Power Pack

The power pack is placed on the deck of the operating vessel and connected to the skimmer head via flexible hydraulic pipes. The power pack consists of a self regulating hydraulic piston pump directly coupled to an air cooled diesel engine which is equipped with electric starting facility, it also has a recoil hand start capability. The power pack also supplies power to an oil transfer pump.



Detailed Specification:

Max. output	6.7	KW
Engine operating speed	3000	r.p.m
Oil in circulation	150	litres
Length	1400	mm
Width	860	mm
Height	1050	mm
Weight (dry)	205	kg
Weight (filled)	340	kg

3. Oil Transfer Pump

A transfer pump is provided to pump the recovered oil from the skimmer sump to bulk storage on the vessel. The pump is connected to the skimmer head via a flexible suction hose provided with quick release connectors. The pump is driven by a variable speed hydraulic motor.

Detailed Specification:

Max. Delivery rate	15	cubic metres/hour
Max. Operating speed	1070	r.p.m
Length	1110	mm
Width	360	mm
Height	360	mm
Weight	55	kg

4. *Operator Console*

The skimmer head and pump are controlled by directional valves and flow control valves mounted on a separate operator console which may be positioned in the most convenient position for operating the system which is usually close to the ships handrail. The pump is bi-directional and it may be used to pump in both directions if required, for instance when emptying the temporary storage container. The skimmer must NOT be operated in reverse when the mops are installed.



Detailed Specification:

Length	500	mm
Height	1050	mm
Width	500	mm
Weight	50	kg

5. *Umbilicals*

The system includes all hydraulic hoses, oil transfer hoses and clips. Typically the hoses are no more than 10 metres so that the operator is not too far from the main console.

6. System Container

The complete system is supplied in a steel storage container which provides protection and security when the system is not in use. The power pack and pump may be left on the base of the container during operations if desired. The top cover of the container is designed to be used for temporary recovered oil storage when removed and inverted, and a disposable liner is provided so that the interior of the cover does not become fouled with recovered oil.



Container Dimensions and gross weight:

Length	2000	mm
Width	1500	mm
Height	1200	mm
Weight	680	kg

Registered Office: 1 Nab Lane Batley West Yorkshire WF17 9NG United Kingdom **Tel:** +44 (0) 1924 442701 **Fax:** +44 (0) 1924 471925
Reg No: 1476775 **VAT Reg No:** 330 9016 89

Reservation as to title: The ownership of the goods shall not pass to the customer until full payment of the purchase price but the risk shall pass upon delivery. The benefit and/or proceeds of any dealings with goods by the customer in contravention of the above reservation of property rights shall be held in trust for us.