

Custom Products/ System Designs – CARGO AIDS

Cargo Aids provides custom solutions in all areas of restraint. Looking outside already specified systems, many of our customers have the need for specially adapted existing products or completely newly designed items to resolve a problem quickly, efficiently and economically. Examples include:

- ◆ Stretcher strapping systems for helicopters
- ◆ Deck tie down systems for embarked aviation
- ◆ Helicopter door restraints
- ◆ Special quick release seat rail fittings
- ◆ Strapping to secure nuclear waste containers
- ◆ Cable release mechanisms for fast rope systems
- ◆ Retractable webbing restraints for sonar devices



Cargo Aids is an ISO 9001 company. Our quality standards allow for certification approved by the CAA, EASA and the Defence Quality Assurance Board.

We offer our testing, certification and engineering facilities for projects large and small. Cargo Aids are always ready and willing to assist, whatever your requirements.



Our capability's include:

- ◆ Load testing
- ◆ Vibration testing
- ◆ Corrosion assessment
- ◆ Design justification packages
- ◆ Prototyping trials
- ◆ Standards compliance



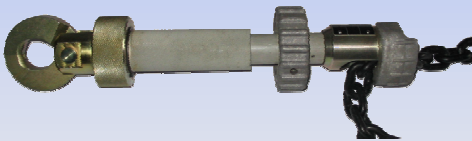
Load Testing

Cargo Aids experienced technical sales and design team are always standing-by to discuss and develop your sketchpad ideas and turn them into a finished product. By using state of the art C.A.D. the design can be fine tuned at any stage to ensure the final production item is perfect.

Chain Lashing Solutions

Cargo Aids provides custom solutions in all areas of restraint. An example is the adaptation of our standard QRC to meet existing users expanded requirements.

Cargo Aids have designed variations of QRC to suit specific needs.



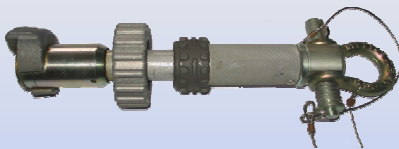
Standard QRC

This is a Quick Release Coupling that is regularly used to secure embarked aviation as well as for various alternative and demanding applications where secure load restraint is critical to mission success.



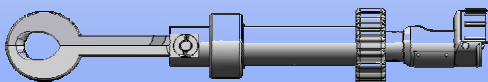
Anti-Vibration QRC

Adapting the standard QRC to operate in an area of extreme vibration was one application Cargo Aids were tasked to address.



Modified Attachment QRC

The same requirement was requested but with a different attachment fitting, Cargo Aids worked closely with the customer to arrive at a satisfactory conclusion.



Extended Claw QRC

A further design requirement for airborne cargo restraint was redesigned jaws. Working closely with the commissioning authority, Cargo Aids once again satisfied the need quickly, efficiently and economically.

Webbing and Strapping Solutions

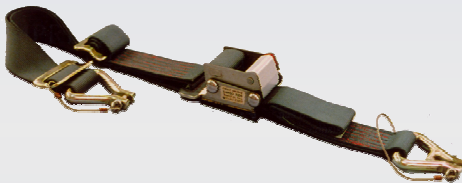
Cargo Aids have been providing webbing solutions from the MC1 and MC2 proven lashings through custom items manufactured to customer generated designs.



Webbing retractor

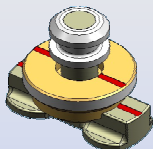
This example shows a custom mechanism designed to cater for:

- ◆ Marine corrosion environment
- ◆ Low force retraction system
- ◆ Vibration resistant
- ◆ Quick release facility
- ◆ Fully documented design validation



Torpedo lashing

Securing torpedoes and other high value weapons demands the most dependable of restraint equipment. This buckle was developed specifically for the British Royal Navy. More information can be found in our main brochure.



Seat rail fitting

This non-standard fitting was designed to allow for the rapid fitting and removal of seats into an airframe utilising the manufacturers original floor configuration. The example is one of many solutions that Cargo Aids can provide.



One of our computer controlled sewing machines

Cargo Aids have in-house facilities to enable your prototype or production item to be completed quickly and efficiently.

Using modern computer controlled equipment to ensure that the stitching is correct for the design load, Cargo Aids can satisfy all requirements.

Tell us your requirement and our Technical sales team will develop a solution to meet your needs... *How can we help you?*

