



## Light and mirror probes



### Specification

• Working length:	100mm to 1000mm
• Direction of view:	90°
• Mirror diameter:	8mm to 30mm

### Light and mirror probes for XHL Xenon Halogen illumination

3.5 V

Probe head	T-000.25.100
Probe dia. 5mm, 100mm long, with 3.5V bulb	T-002.25.120
same, 200mm long	T-002.25.121
same, 300mm long	T-002.25.122
same, 400mm long	T-002.25.123
same, 500mm long	T-002.25.124
Extension probe, 500mm long, dia. 8mm	T-000.25.129
Flexible light probe, 500mm long	T-002.25.130



Probe head



Probe dia. 5mm



Flexible light probe



Detachable steel mirror



Detachable glass mirror



Focusable prism telescope

### Mirrors

Detachable mirrors with secure bayonet fitting, can be combined with all probes

Detachable steel mirror, dia. 8mm	T-000.25.300
same, dia. 12mm	T-000.25.301
Detachable glass mirror, dia. 16mm	T-000.25.305
same, dia. 20mm	T-000.25.306
same, dia. 25mm	T-000.25.307
same, dia. 30mm	T-000.25.308

Focusable prism telescope 3 – 5.5x (for all probes)	T-000.25.350
---	--------------

XHL Xenon Halogen spare bulb 3.5V	T-002.88.066
-----------------------------------	--------------

### T-518 Inspection Set J

Consisting of:

Probe head, 5 probes 100 – 500 mm long, swivel loupe 2x, prism telescope, 2 detachable steel mirrors, dia. 8 and 12 mm, 4 detachable glass mirrors, dia. 16 to 30 mm, XHL Xenon Halogen spare bulb 3.5V, in transparent pack with BETA Battery handle 3.5V

T-518.20.123



### Power and light sources

• BETA Battery handle with 3 LR14 dry batteries	3.5V
• Rechargeable handles NiMH or Li-ion	

Mirror probe with remote adjustment of mirror



Specification

∴ Working length:	400 mm
∴ Direction of view:	30° to 120°
∴ Mirror diameter:	20 mm to 30 mm

<b>Mirror probe with remote adjustment of mirror</b>	3.5V
Mirror probe with fixed head and remotely-adjustable mirror, dia. 5 mm, length 400 mm, with 3.5V bulb, without handle	<b>T-002.25.200</b>
Screw-fitting glass mirror, dia. 20 mm	<b>T-000.25.201</b>
same, dia. 25 mm	<b>T-000.25.202</b>
same, dia. 30 mm	<b>T-000.25.203</b>
Focusable prism telescope 3 – 5.5 x (for all probes)	<b>T-000.25.350</b>
XHL Xenon Halogen Spare Bulb 3.5V	<b>T-002.88.066</b>

**T-516 Inspektions-Set G**

Consisting of:

Mirror probe with remote adjustment of mirror, length 400 mm, 3 screw-fitting glass mirrors, dia. 20 to 30 mm, Prism telescope, XHL Xenon Halogen spare bulb 3.5V, in transparent pack with BETA Battery handle 3.5V

**T-516.20.123**



Power and light sources

∴ BETA Battery handle with 3 LR14 dry batteries	<b>3.5V</b>
∴ Rechargeable handles NiMH or Li-ion	



### Straight inspection mirror for 3.5 V



Straight inspection mirror with plane mirror

**Straight inspection mirror**

with automatic connector for all 3.5V handles. A screw-fitting is provided for either a plane or a concave mirror which provides 2-3 x magnification, depending on the distance to the object.

	3.5 V
Straight mirror-holder, 100 mm long, with 3.5V bulb	T-002.12.109
Straight inspection mirror, complete with bulb and plane mirror, dia. 20mm	T-002.12.101
Screw fitting mirror, dia. 20mm, plane	T-000.12.103
same, concave (magnifying)	T-000.12.104
XHL Xenon Halogen spare bulb 3.5V	T-002.88.063

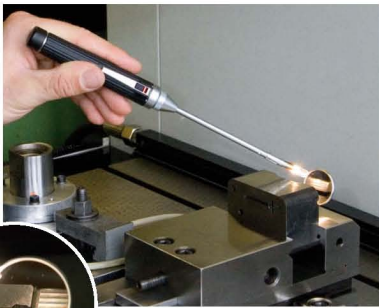
**Power and light sources**

<ul style="list-style-type: none"> <li>❖ BETA Battery handle with 3 LR14 dry batteries</li> <li>❖ Rechargeable handles NiMH or Li-ion</li> </ul>	3.5V
--	------

### mini light and mirror probes 2.5V

The **mini light and mirror probe for the mini 2000 handle** is a particularly light and compact instrument, which is instantly ready for use anywhere.

Compact, handy instruments for the toolbag.



<b>mini light and mirror probe</b>	2.5V
mini probe, dia. 5mm, 125 mm long, complete with mini 2000 battery handle (with batteries)	T-001.25.142
mini probe with 2.5V bulb, without handle	T-001.25.140
mini 2000 battery handle (with batteries)	T-001.79.009
XHL Xenon Halogen spare bulb 2.5V	T-001.88.057

Mirrors see page 18.

**Inspection Set D**

Consisting of:  
mini probe with battery handle mini 2000 (with batteries), detachable mirrors T-000.25.305 and T-000.25.307, XHL Xenon Halogen spare bulb T-001.88.057, in transparent pack

T-513.10.052



## Viewing probe HEINE mini 2000® F.O.



The mini 2000 F.O. Viewing probe, manufactured from robust polyamid, is a handy instrument which is ideal for the pocket with a weight of only 100 g. With a direction of view of 0°, the object inspected may be at a distance of up to 45 mm.

**Magnification lens for 0° and 90°: 4 to 5x magnification.**

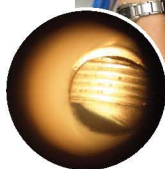
Viewing probe mini 2000 F.O.	2.5V
Viewing probe mini 2000 F.O. with bulb 2.5V, without handle	<b>T-001.70.105</b>
Viewing probe mini 2000 F.O. on mini 2000 battery handle	<b>T-001.70.109</b>
Viewing probe mini 2000 F.O. with mirror probe 90°, Ø 5/25 mm on mini 2000 battery handle	<b>T-001.24.222</b>
Viewing probe mini 2000 F.O. with mirror probe 90°, Ø 5/25 mm and 2.5V spare bulb, without handle	<b>T-001.24.220</b>
XHL Xenon Halogen spare bulb 2.5V	<b>T-001.88.037</b>

### Inspection Set C

Consisting of:

mini 2000 F.O. viewing probe complete with battery handle mini 2000  
90° mirror probes (25 mm and 30 mm),  
XHL Xenon Halogen spare bulb, in transparent pack

**T-512.10.052**





Viewing probe HEINE BETA 200® F.O.

For apertures from 5 mm diameter. Direction of view 0° and 90°



This robust metal head with its 3.5V XHL Xenon Halogen bulb gives a remarkably bright, white light when used with a 3.5 handle. The brightness can be adjusted by a rheostat control to suit the application. The instrument is especially well-suited for workshop use but is also portable. With 0° direction of view, the object distance is up to 70mm max.

Magnification lens for 0° and 90° direction of view: 3 to 4x magnification.

Viewing probe BETA 200 F.O.	3.5V
BETA 200 F.O. with 3.5V bulb and magnifying lens	T-002.24.250
as above, with mirror probes, 30mm and 50mm	T-002.24.251
XHL Xenon Halogen spare bulb 3.5V	T-002.88.078

Inspection Set E

Consisting of: viewing probe BETA 200 F.O., 3 mirror probes with 90° direction of view (working length 25 mm, 30 mm and 50 mm), XHL Xenon Halogen spare bulb and BETA Battery handle 3.5V

T-524.20.123



Power and light sources

<ul style="list-style-type: none"> <li>• BETA Battery handle with 3 LR14 dry batteries</li> <li>• Rechargeable handles NiMH or Li-ion</li> </ul>	3,5V
--	------

Accessories for viewing probes



A range of three mirror probes provides a 90° direction of view. They are simply attached to the far end of the instrument.

Mirror probes

Mirror probe 90° – dia. 5 mm, working length 25mm	T-000.24.240
Mirror probe 90° – dia. 6 mm, working length 30mm	T-000.24.241
Mirror probe 90° – dia. 6mm, working length 50mm (BETA 200 only)	T-000.24.242