

Party Wall Roll

Data Sheet | July 2014

Party Wall Roll is a glass wool roll designed for use within masonry party or separating walls as described within ADL1 (E&W) and Section 6 (Scotland) respectively. When installed in a masonry party or separating wall in conjunction with effective edge sealing will negate the effect of thermal bypass associated with such walls whilst not significantly affecting their acoustic performance. Party Wall Roll may be used as a component in a number of Robust Detail solutions or it may be used in party wall systems which require on-site pre-completion acoustic testing. Party Wall Roll is manufactured at a minimum 18kg/m³ density.



Suitable for use in **robustdetails**® masonry party walls
Superglass Party Wall Roll can be used in the following RD approved solutions:

Ref.	Robust Detail Description	Party Wall Roll
E-WM-1	Dense aggregate blocks Wet plaster	75mm or 100mm
E-WM-2	Lightweight aggregate blocks Wet plaster	75mm or 100mm
E-WM-3	Dense aggregate blocks Render and gypsum based board on dabs	75mm or 100mm
E-WM-4	Lightweight aggregate blocks Render and gypsum based board on dabs	75mm or 100mm
E-WM-5	Besblock "Star Performer" dense aggregate cellular blocks Render and gypsum-based board on dabs	75mm or 100mm
E-WM-6	Aircrete Blocks Render and gypsum-based board on dabs	75mm or 100mm
E-WM-10	Aircrete thin joint system Render and gypsum-based board on dabs	75mm or 100mm
E-WM-11	Lightweight aggregate, or nominated hollow or cellular blocks Render and gypsum-based board on dabs	100mm
E-WM-12	Plasmor "Aglite Ultima" lightweight aggregate blocks Render and gypsum-based board on dabs	75mm or 100mm
E-WM-13	Aircrete thin joint – untied system Render and gypsum-based board on dabs	75mm or 100mm
E-WM-16	Dense aggregate blocks Render and gypsum-based board on dabs	100mm
E-WM-18	Dense aggregate blocks Wet plaster	100mm
E-WM-19	Monarfloor Bridgestop System Dense or lightweight blocks or nominated hollow or cellular blocks Render and gypsum-based board on dabs	100mm
E-WM-21	Lightweight aggregate blocks Wet plaster	100mm
E-WM-22	Lightweight aggregate blocks Superglass Party Wall Roll Gypsum-based board (nominal 10kg/m ²) on dabs	100mm
E-WM-23	Aircrete Blocks Superglass Party Wall Roll Gypsum-based board (nominal 8kg/m ²) on dabs	100mm
E-WM-25	Wienerberger Porotherm Blocks Porotherm Ecoparge and Gypsum-based board on dabs (nom 8kg/m ²)	100mm
E-WM-26	Besblock "Star Performer" dense aggregate cellular blocks Gypsum-based board on dabs (nom 10kg/m ²)	100mm
E-WM-27	Lightweight Aggregate Blocks or Plasmor Aglite Ultima Superglass Party Wall Roll Gypsum-based board on dabs (nom 8kg/m ²)	75mm or 100mm



Product dimensions and information				
Thickness (mm)	Length (m)	Width (mm)	Area (m ²)	Code
75	7.70	3 x 455	10.51	5873
100	5.75	3 x 455	7.85	5872

24 rolls per pallet



Value for Money



Acoustic Insulation



BRE Green Guide Rating



Recycled Glass Bottles



A1 Non-combustible

[teamworks]

www.superglass.co.uk

Your insulation team
Superglass

Environmental

Party Wall Roll is classified as having zero ODP (Ozone Depletion Potential) and zero GWP (Global Warming Potential). They are also CFC and HCFC free.

Durability

Party Wall Roll is non-hygroscopic, will not rot, degrade or sustain vermin and will not encourage the growth of mould, bacteria or fungi.

Standards

Party Wall Roll is manufactured in accordance with BS EN 13162: 2012, BS EN 13172: 2012 and ISO 9001 Quality Management Systems. Also manufactured to comply with the requirements of CE Marking 93/68/EEC.

Fire Classification

Party Wall Roll is classified as non-combustible with a Reaction to Fire Classification A1 when tested to BS EN 13501-1.

Vapour Resistance

Party Wall Roll possess negligible vapour resistance allowing vapour to pass freely through the insulation.

Handling & Storage

Party Wall Roll is supplied compression packed in polythene to provide short term protection and for long term protection, the product must be stored indoors or under a waterproof covering in order to protect against weather damage. Party Wall Roll should not be left permanently exposed to the elements.

Associated Products

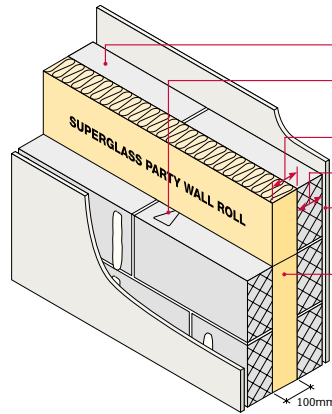
TF Party Wall Roll

Superglass Certification



FM02264

E-WM-22



Block density: 1350 to 1600 kg/m³ or Plasmor Aglite Ultima 1050kg/m³

Wall Ties: Approved Document E 'Tie type A'

Cavity width: 100mm (min)

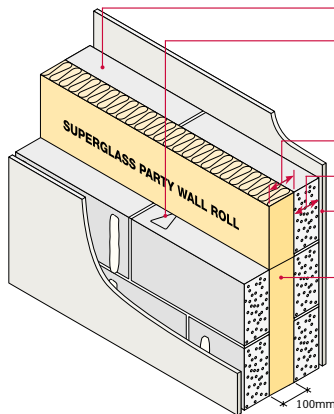
Block thickness: 100mm (min), each leaf

Wall finish: Gypsum based board mounted on dabs (nominal 10kg/m²)

Insulation: 100mm Superglass Party Wall Roll

External flanking wall: Masonry (both leaves) with 50mm (min) cavity - clear, fully filled or partially filled with insulation.

E-WM-23



Block density: 600 to 800kg/m³

Wall Ties: Approved Document E 'Tie type A'. For thin joint, wall ties must be Ancon Building Products Staifix HRT4 at no more than 2.5 ties per square metre

Cavity width: 100mm (min)

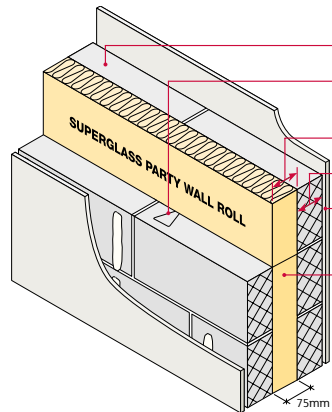
Block thickness: 100mm (min), each leaf

Wall finish: Gypsum based board mounted on dabs (nominal 8kg/m²)

Insulation: 100mm Superglass Party Wall Roll

External flanking wall: Masonry (both leaves) with 50mm (min) cavity - clear, fully filled or partially filled with insulation.

E-WM-27



Blocks: 1350 to 1600 kg/m³

Wall Ties: Approved Document E 'Tie type A'

Cavity width: 75mm (min)

Block thickness: 100mm (min), each leaf

Wall finish: Gypsum based board mounted on dabs (nominal 8kg/m²)

Insulation: Superglass Party Wall Roll

External flanking wall: Masonry (both leaves) with 50mm (min) cavity - clear, fully filled or partially filled with insulation.

Superglass Insulation Limited

Kerse Road, Thistle Industrial Estate, Stirling, Scotland FK7 7QQ

TECHNICAL

Hotline: 0844 381 4022

Email: technical@superglass.co.uk

Fax: 01786 451245

SALES

Tel: 01786 402013 / 01786 402014

01786 402015 / 01786 402016

Email: sales@superglass.co.uk

Fax: 01786 451245

www.facebook.com/superglassinsulationltd

www.twitter.com/superglassins

www.linkedin.com/company/superglass-insulation-ltd

For further information, product sheets, alternative dimensions or facings please contact the Technical Hotline on 0844 381 4022.

Please note - all dimensions are nominal.

Your insulation team
Superglass