

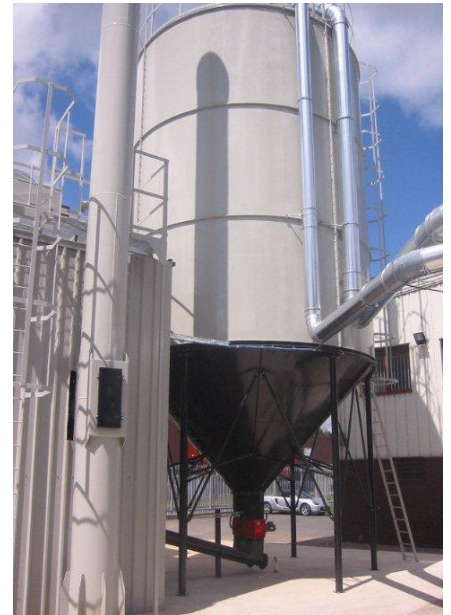
Ranheat Engineering Ltd

Ranheat design, manufacture and install the complete range of equipment to deal with your Biomass energy management and wood waste disposal problems including:

Automatic Wood / Biomass Burning Boilers
Automatic Wood / Biomass Burning Heaters



For many years, companies have been disposing of their wood waste into skips. With the increasing cost of land fill tax and skip costs, a cost-effective, energy saving and energy efficient wood waste disposal system is becoming more and more important. Companies grow and so it is important to look to the future when planning your wood waste disposal system.



Wood biomass boilers and warm air heaters have the added benefit of transforming a waste product into a source of heat. In many cases the reductions on heating bills and skip costs give a return on investment in less than three years, especially with payments under the **RHI Scheme**. The Renewable Heat Incentive (RHI) is a Government environmental programme designed to increase the uptake of renewable heat technologies by providing incentive payments to eligible generators of renewable heat for commercial and industrial sectors. This is applicable to boiler systems only at present.

Ranheat's team that are responsible for product development have worked hard to produce intelligent and safe solutions. As industry specialists we have the International expertise our competitor's lack.

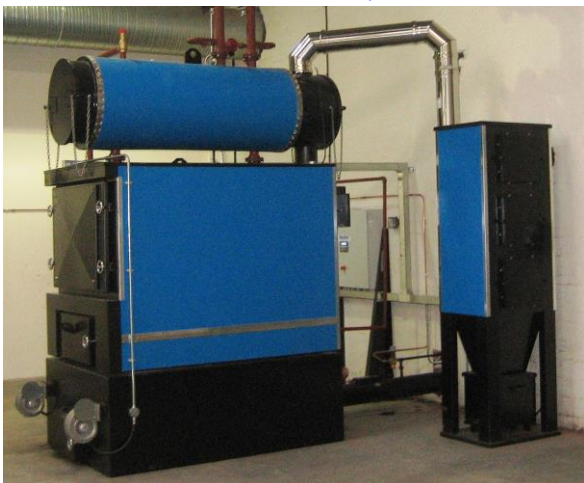


We are proud that our range covers the needs of any prospective customers that may otherwise find it difficult to find a suitable application. A lot of our customers are willing to show other companies their systems and are happy to discuss the benefits they have received from our equipment. We have the flexibility to cater for the needs of all companies large or small and pride ourselves on our products; their strength and reliability have impressed all sizes of companies and especially those with previous experience of wood combustion systems



Telephone: +44 (0)1604 750005 Fax: +44 (0)1604 757300
Email: sales@ranheat.com Web address: www.ranheat.com
Ranheat Engineering Ltd, 62 St James Mill Road, Northampton NN5 5JP

In more recent years there have been advances in our design that have led to greater efficiency in the use of wood as a fuel. The efficiency of a boiler can be greatly increased by the use of an economiser. The economiser



is a separate or integrated heat exchanger that takes the exhaust flue gasses from a boiler and then passes them through another two passes in a heat exchanger to extract more of the heat from the flue gasses. The flue temperature typically reduces by over 100°C giving the increased efficiency. Economisers are available to fit to existing installations to increase output and efficiency.



Future changes to legislation and acceptance on to the "Renewable Heat Incentive" Scheme are due to be introduced to improve air quality controls and the emission limits values.



Ranheat's ceramic biomass filter is an engineered air filtration system designed to remove air borne particles from the combustion gasses of our biomass boilers. They are designed and manufactured to each specific biomass boiler size requirement. The 280 filter elements are built into insulated filter housing. The filter housing has a clean side and a dirty side. Particulates from the wood combustion process are collected on the outside of the filter elements (dirty side) and suction is applied to the core of the filter element (clean side). Our filter is designed to collect dust and particulates onto the surface of the ceramic filter elements that are then cleaned by a controlled blast of compressed air at pre-set timed intervals.

Ranheat work closely with a variety of dust extraction companies each integrating completely with our wood combustion equipment, with projects using existing extraction being equally successful as ones that are installed simultaneously. Automated systems feed material into storage silos including dust, shavings and hogged material. The silos are constructed of steel, are painted to our customer's requirements and come in a range of capacities and diameters. If space is available standard silos can be extended to store

more waste should customer's requirements increase.

We also supply a Push Rod silo that has hydraulic arms which push waste into a transfer system, originally designed to be used on existing extraction systems that are blown into skips. The benefit of this silo is its compact nature, unlike our normal silos they are not spherical and do not require space above, making them a perfect solution whenever space is a consideration.

A recent addition to the boiler design is the Automatic Tube Cleaning System. This is simply using a blast of air which passes through the tubes within the boiler to ensure all tubes are clear for when the combustion gases go through.

It is another method that helps to provide a maintenance free cleaning system for you.

Please do contact us with your requirements and we will be happy to provide you with a no obligation quotation.

