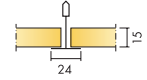




Ecophon Hygiene Meditec™ A C1



Ecophon Hygiene Meditec A C1 is a wall to wall, sound-absorbing ceiling system intended for environments where disinfection and/or cleaning is required on a regular basis. This system is recommended for dry environments. Examples of applications: nursing and healthcare premises.

The system consists of Ecophon Meditec A tiles, which have a core of high density glass wool utilizing the 3RD Technology and a painted cleanable Akutex™ TH surface. The back of the tile is covered with glass tissue. The edges are primed. The supporting structure is an exposed Ecophon Connect T24 grid of galvanised steel. The weight of the system is approximately 2,5 kg/m². The tiles should be secured to the grid with Connect Universal clips in order to withstand pressure during cleaning and to minimise dirt traps.



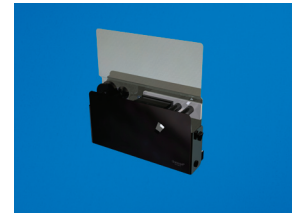
Hygiene Meditec A tile



Hygiene Meditec A C1 system



Hygiene Meditec A C1 section with Connect Universal clip



Connect Tape applicator for sealing of cut edges

SYSTEM RANGE

Size, mm	600	1200
	x	x
	600	600
T24	•	•
Thickness	15	15
Inst. Diag.	M255	M255

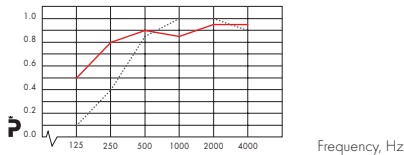
TECHNICAL PROPERTIES

ACOUSTIC

Sound Absorption: Test results according to EN ISO 354.

Classification according to EN ISO 11654.

α_p Practical sound absorption coefficient



— Ecophon Hygiene Meditec A C1, 200 mm o.d.s.
 Ecophon Hygiene Meditec A C1, 50 mm o.d.s.
 o.d.s= overall depth of system

Product	Hygiene Meditec A C1		
	50	200	400
o.d.s mm			
absorption class	C	A	
α_w	0,70	0,90	
NRC	0,8	-	0,85
SAA	0,83	-	0,88

Sound Insulation: Not applicable.

Sound Privacy: Not applicable



ACCESSIBILITY The tiles are demountable. Minimum demounting depth according to installation diagram. The tiles are secured using Hygiene Clip 20 to allow for effective in-situ cleaning. The clips are easily removable from above the ceiling. A tightly sealed, easy-to-open Hygiene Inspection hatch is available to simplify access to the ceiling void.



CLEANABILITY Daily dusting and vacuum cleaning. Weekly wet cleaning. Can withstand the use of common disinfecting chemicals.



VISUAL APPEARANCE White 010, nearest NCS colour sample S 0502-Y, 84% light reflectance.



INFLUENCE OF CLIMATE The tiles withstand a permanent ambient RH up to 95% at 30°C without sagging, warping or delaminating (ISO 4611). A higher temperature/moisture is permissible during washing as stated above. Microbiological growth class 0 according to ASTM G 21-96. The grid and accessories meet the demands of corrosion class C1 according to EN ISO 12944-2.



INDOOR CLIMATE Certified by the Indoor Climate Labelling, emission class M1 for building materials, recommended by the Swedish Asthma and Allergy Association, and can be used in rooms classified as ISO class 5 according to ISO 14644-1.



ENVIRONMENTAL INFLUENCE Glass wool core utilising 3RD Technology. Granted the Nordic Swan eco-label. Fully recyclable.



FIRE SAFETY The glass wool core of the tiles is tested and classified as non-combustible according to EN ISO 1182. The systems are classified as fire protective covering according to NT FIRE 003.

Reaction-to-fire classification

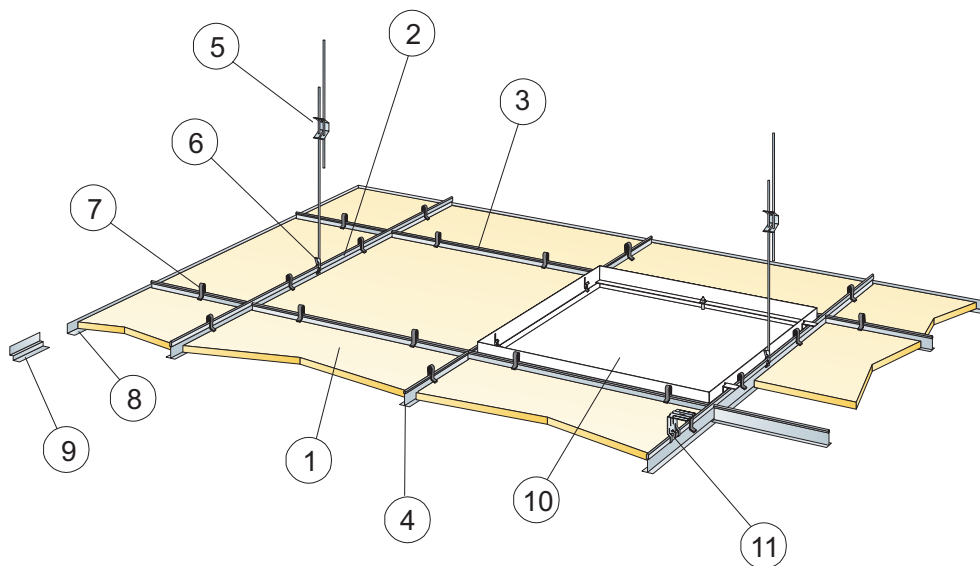
Country	Standard	Class
Europe	EN 13501-1	A2-s1,0



MECHANICAL PROPERTIES See table about Max live load and Min load bearing capacity and Functional demands, Mechanical properties at www.ecophon.com.



INSTALLATION Installed according to installation diagrams, installation guides and drawing aid. Cut panels must be sealed with Connect sealing tape using the Connect Tape applicator, or Connect Edge sealant. Penetrations must be sealed with a suitable sealant.



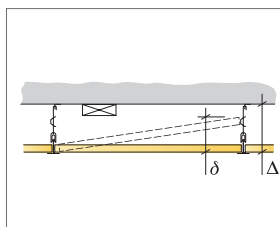
© Ecophon Group

QUANTITY SPECIFICATION (EXCL. WASTAGE)

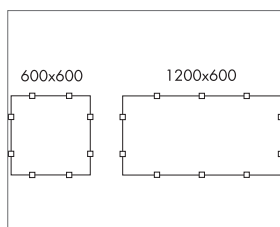
		Size, mm	
		600x600	1200x600
1	Hygiene Meditec A	2,8/m ²	1,4/m ²
2	Connect T24 Main runner, installed at 1200 mm centres (max distance from wall 300 mm)	0,9m/m ²	0,9m/m ²
3	Connect T24 Cross tee, L=1200 mm, installed at 600 mm centres	1,7m/m ²	1,7m/m ²
4	Connect T24 Cross tee, L=600 mm	0,9m/m ²	-
5	Connect Adjustable hanger, installed at 1200 mm centres (max. distance from wall 600 mm)	0,7/m ²	0,7/m ²
6	Connect Hanger clip	0,7/m ²	0,7/m ²
7	Connect Universal clip 0083	11/m ²	7/m ²
8	Alt. Connect Angle trim, fixed c300	as required	as required
9	Alt. Connect Shadow-line trim, fixed c300	as required	as required
10	Connect Inspection hatch C1	as required	as required
11	For direct installation without clip: Connect Direct bracket, installed at 1200 mm centres	0,7/m ²	0,7/m ²

Δ Min. overall depth of system, with Adjustable hanger and clip: 150 mm, with Direct fixing without clip: 50 mm.

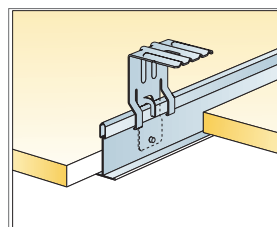
δ Min. demounting depth: With clip: 150 mm. Without clip: 100 mm.



See Quantity specification



Arrangement of clips



Suspension with direct bracket

Size, mm	Max live load [N]	Min load bearing capacity [N]
600x600	50	160
1200x600	50	160

Live load/load bearing capacity