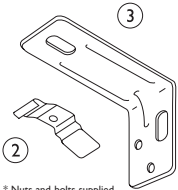
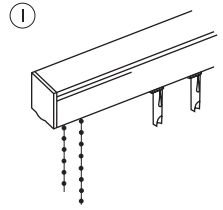


# Vertical Blinds - Fitting Instructions

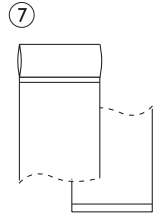
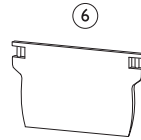
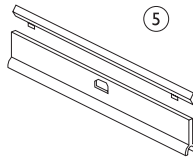
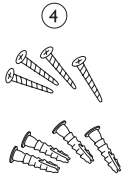
## A Pack contents

This pack contains:

- ① One Headrail, fully assembled
- ② Small Fixing Brackets (2 for 4 Ft Headrail, 3 for 6 Ft and 8 Ft Headrail)
- ③ Large Fixing Brackets (2 for 4 Ft Headrail, 3 for 6 Ft and 8 Ft Headrail)
- ④ Fixing Screws and Wall Plugs
- ⑤ Panel Hangers and Retaining Rods (15 for 4 Ft Rail, 23 for 6 Ft Rail, 30 for 8 Ft Rail)
- ⑥ Weights for Fabric Panels (15 for 4 Ft Rail, 23 for 6 Ft Rail, 30 for 8 Ft Rail)
- ⑦ Fabric Panels (15 for 4 Ft Rail, 23 for 6 Ft Rail, 30 for 8 Ft Rail)



\* Nuts and bolts supplied to join brackets if fitting blind to wall.



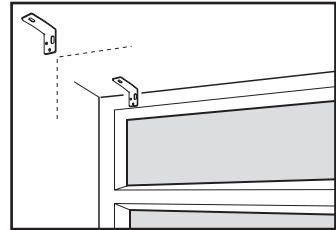
**To fit this blind you will need:** Pencil, ruler, tape measure, small hacksaw, scissors, screw driver, drill.

## B Measuring Guide

The blind can be fitted inside or outside the window recess:

**For inside recess fixing:** Measure the width of the recess at the height the blind is to be fitted and subtract 1 cm.

**For outside recess fixing:** Measure the width of the recess and add 20 cm (10 cm overlap each side).

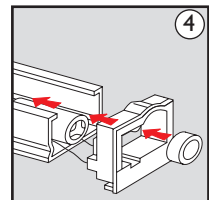
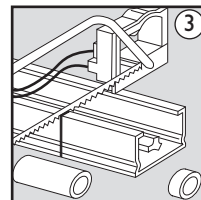
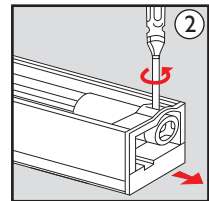
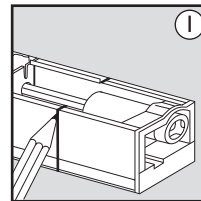


## C Cutting the Headrail

**Although the headrail is supplied ready to fit, the length can be easily shortened as required by following the simple steps outlined below:**

The headrail must be shortened from the end without the beaded side control, this end has a smaller end cap.

- ① Mark the headrail with the required length and move the track and cord to the opposite end of the rail to be cut (Diagram 1).
- ② Loosen the grub screw retaining ring and gently prise off the end cap (Diagram 2). Remove the plastic stop ring from the inner bar. Note: If the grub screw is not visible pull the beaded control cord gently until it can be seen.
- ③ Cut squarely through the headrail and inner bar using a suitable hacksaw, ensuring that the end cap and cord are safely out of the way (Diagram 3).
- ④ To re-assemble the headrail slide the plastic stop ring back over the inner bar and gently refit the end cap ensuring that no cord is trapped. Push on and re-tighten the grub screw retaining ring (Diagram 4).

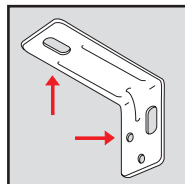


## D Fitting the Headrail

**Fitting to the Wall** - Fasten brackets 2 and 3 together using the nut and bolts supplied. Screw the brackets to the wall equal distances apart using the wall plugs and screws. Clip the top of the headrail to the brackets using firm but not excessive pressure on both sides.

**Fitting to the Ceiling** - Screw Brackets 2 to the ceiling equal distances apart then clip the top of the headrail to the brackets using firm but not excessive pressure on both sides.

Note: The control cord can be located on the left or right hand side as required. Position the blind accordingly before clipping into the brackets.

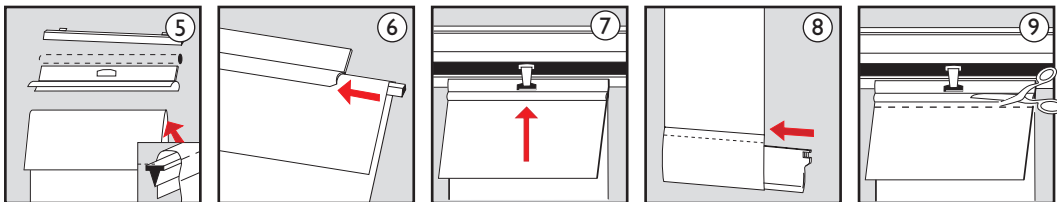


## E Fitting the Panels

With the headrail in position measure the required length of the panel. Typically the panels hang 12 mm (1/2 inch) above the window ledge. Fold the excess fabric over the retaining rod, ensuring that the fabric fold is on the same side as the bottom pocket. (Diagram 5). Slide onto the open end of the adjustable hanger (Diagram 6).

Fit the panel hangers onto the headrail hanging hooks, starting at the cord control end of the blind (Diagram 7).

Place a weight in the bottom pocket (Diagram 8). If adjustment is required, remove the panel from the adjustable panel hanger and raise or lower the length as required.

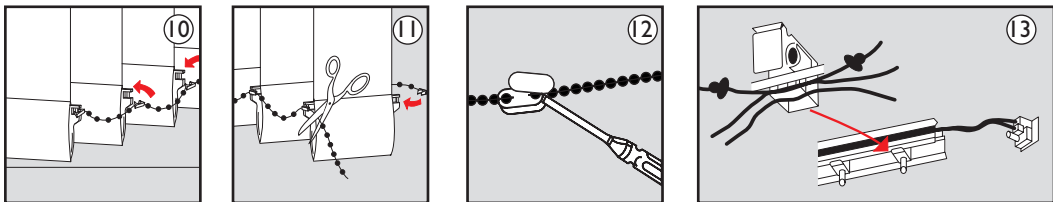


**TRIM THE EXCESS FABRIC WITH SHARP SCISSORS ONLY WHEN THE PANEL LENGTH IS CORRECT** (Diagram 9).

Repeat the process until all panels are positioned on the headrail, ensuring that no hanging hooks are missed. Attach the chains by clipping them onto the weights on each panel (Diagram 10). Trim off excess with scissors (Diagram 11).

The beaded cord control can be shortened if required. Prise open the cord connector and cut the beaded cord to the required length ensuring that equal amounts are taken off each end. Relocate the cord connector and close the cover (Diagram 12).

If the headrail is shortened by more than one slat width then it may be necessary to reduce the number of slats attached (Diagram 13). This can be achieved by first removing the headrail end cap (see section C). Carefully untie the knots in the cord that pass through the headrail hanging hooks, unthread the cord and then remove excess hanging hooks. Reassemble the blind ensuring that the cord is correctly threaded through the headrail hanging hooks and end cap and the knots are re-tied. Note: It may be necessary to reduce the length of the cord, depending on the overall drop of the window.



## F Operating the Blind

**Opening and Closing** – Pull either side of the weighted cord control to open or close the blind.

**Tilting the Panels** – Pull either side of the beaded cord control chain to tilt the panels.