



expandarange



flat-packed, man-portable, expandable buildings



expandarange

Since it began 5 years ago, we have continually developed and expanded our product range to respond to customer requirements.

This product brochure, shows the latest expandarange on offer, so far...



The original store that initiated the Expanda range. Quick to assemble, with lots of accessories, this simple but flexible storage solution is fully modular.

storage units



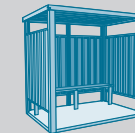
Office and workshop units, the ultimate fast accommodation solution. Extra window / door panels and optional electric packs are available. A fully modular design.

offices / workshops



Hazardous storage units, featuring double doors for easy access, a sumped floor with suspended grate for contained spillage and a fully modular design.

hazardous stores

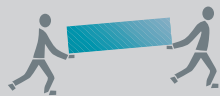


Smoking shelters, bus stops, whatever your need, this incredibly simple shelter is assembled in minutes and has no need for foundations.

shelters



All Expandarange buildings arrive flat-packed,



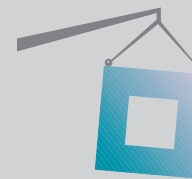
they are completely man portable,



only requiring a screwdriver and socket set



for their fast and simple assembly.



Assembled units can be lifted by crane or fork-lift,



or can be linked together to make more space,



they have lots of accessories



and if not in use, the units can be stored as flatpacks.

all products



As featured in Channel 4's

GRAND DESIGNS

introduction

The best selling Expandastore is a unique general purpose, secure, man portable building, delivered to you flat packed.

The components are light and slim, making it ideal for assembly in locations with restricted access or space.

Assembly is quick and simple and requires only a socket set and screw driver. Once assembled, the fully galvanized steel building can be lifted and moved by crane or forklift.

They can also be extended in width or length by linking additional units.

storage units

offices / workshops

hazardous stores

shelters

intro / assembly



1. THE EXPANDASTORE ARRIVES FLAT-PACKED



2. UNPACK ALL OF THE PANELS



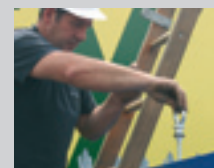
3. FIT PANELS TO THE EXPANDASTORE BASE



4. FIX THE HOLDING SCREWS (only a socket set required)



5. LIFT ON AND FIX THE ROOF



6. INSERT THE FOUR LIFTING RODS



7. INSTALL THE TWO DOOR LOCKS



8. THE EXPANDASTORE IS READY FOR USE

construction sites

school playgrounds

farm yards

highway

maintenance

local authorities

parks

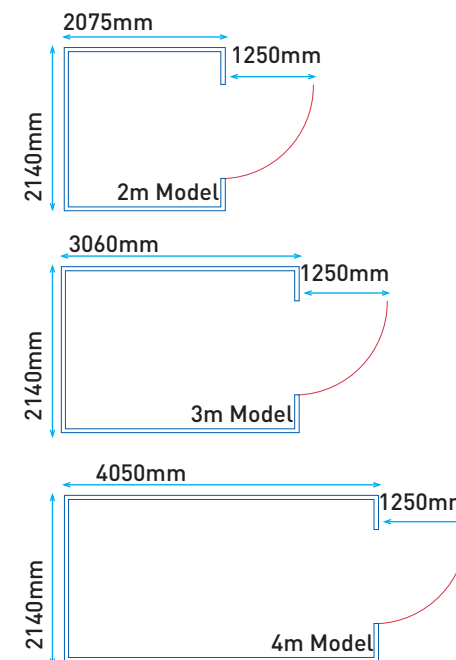
military

gardens



sizes

- 2m x 2.1m
- 3m x 2.1m
- 4m x 2.1m



storage units

offices / workshops

hazardous stores

shelters

sizes / accessories



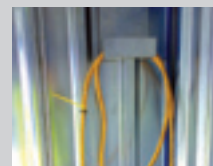
1. CASTOR WHEELS (2 WITH BRAKES)



2. STEEL SHELVING IN VARIOUS FORMS



3. RAMP FOR EASIER ACCESSIBILITY



4. HOOK FOR CABLES AND HOSES



5. TOOL / STORAGE BINS



6. FORK-LIFT AND SELF LEVELLING FEET



7. DOOR CLOSER



8. LINKING KIT

allotments

landscapers

sportsfields

guides/scouts

bikers

conservation areas

offices

warehouses



technical information

GENERAL
Uninsulated closed volume demountable storage container.

DIMENSIONS
2075mm (L) x 2140mm (W) x 300mm (H).
Weight: 325kg
3060mm (L) x 2140mm (W) x 300mm (H).
Weight: 400kg
4050mm (L) x 2140mm (W) x 300mm (H).
Weight: 500kg
[Doors fitted in the long side are a no-cost option]
All units are 2140mm high when assembled

CONSTRUCTION COMPONENTS

1. Chassis
2. Side wall panels
3. Roof panel
4. Door panel
5. Fastening elements

FLOOR
Pre-assembled 18mm thick timber plank boarding screwed to a galvanized steel profile frame.

CHASSIS
Box profile galvanized steel.

SIDE WALLS & ROOF PANEL
0,73 mm box profile galvanized steel panels. The panels are strengthened with spot welded galvanized steel frame sections at the edges of each panel. The roof section has two integral gutters for effective rainwater dispersal to all four corners of the container.

DOOR PANEL
0,73 mm box profile galvanized steel panel. The panel is produced by a spot welding process. The door is mounted into the frame with galvanized hinges. Complete with two 64mm Euro deadlocks with replaceable cylinders and a central roller catch. Door width: 1250mm, hinged on the right, outward opening.

FASTENING ELEMENTS
Four 12 mm diameter rods are used to connect the roof to the chassis. These also form lifting eyes for use with a crane. Additional roof security bolts are supplied to prevent external access.

PACKING
All components of the Expandastore are specially packed to ensure that they are not damaged during transportation, loading and unloading under normal circumstances. The smallest transportation cube is achieved in this packing process.

storage units

offices / workshops

hazardous stores

shelters

technical / features



1. OPTIONAL POWDER COATED FINISHES AVAILABLE



2. WIDE DOOR WITH PALLET ACCESS



3. LIFT BY CRANE (and forklift)



4. SITE IN PREVIOUSLY INACCESSIBLE PLACES



5. STRONG HINGES



6. DOUBLE LOCKING AS STANDARD



7. INTEGRAL GUTTERED ROOF



8. LOTS OF STORAGE SPACE

airports docks golf courses railways colleges

surfers beach hut exhibitions festivals emergencies



introduction

The Expandakabin is a flat packed, man portable office, and is ideal for assembling (with a socket set) in previously inaccessible locations.

Manufactured from fully galvanized steel, the Expandakabin has attractive smooth paneling, finished in a durable powder coated moss green on the outside and an off white on the inside, creating a light and airy interior. The unit is insulated, with a guttered roof for efficient drainage and features a single double glazed uPVC window panel as standard. Additional windows and a glazed door are available as options.

Once assembled the unit can be extended (in width or length by linking additional units) or moved by crane or forklift. The unit can be demounted back into it's neat flat pack form to be stored away, ready for its next deployment.

storage units

offices / workshops

hazardous stores

shelters

intro / assembly



1. THE EXPANDAKABIN ARRIVES FLAT-PACKED



2. UNPACK ALL OF THE PANELS



3. FIT THE FOUR CORNER POSTS



4. SLIDE IN THE WALL, DOOR + WINDOW PANELS



5. FIT THE CEILING RETENTION BARS



6. SLIDE IN THE CEILING PANELS



7. FIT THE OUTER ROOF SKIN



8. THE EXPANDAKABIN IS NOW READY FOR USE

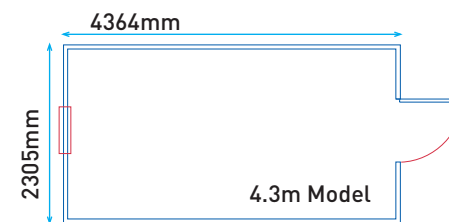
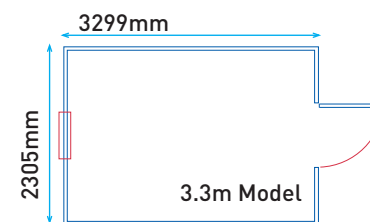
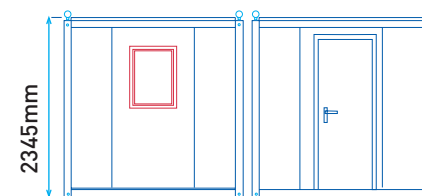


flat-packed, man-portable, expandable buildings



sizes

3.3m x 2.3m
4.3m x 2.3m



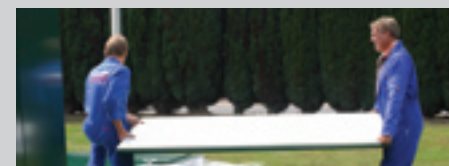
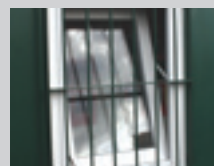
storage units

offices / workshops

hazardous stores

shelters

sizes / accessories



1. ELECTRIC PACK FEATURING A HEATER, LIGHTING KIT, FUSE BOX, TRUNKING, PLUGS, SWITCHES AND CABLING

2. SECURITY WINDOW GRILLE

3. LINKING KIT - UNITS CAN BE LINKED SIDE BY SIDE AND END TO END

4. ADDITIONAL WINDOW WALL PANELS, WINDOW DOOR PANELS AND REPLACEMENT PANELS ARE AVAILABLE.

hotel function rooms

meeting rooms

checkpoint kiosk

guides/scouts rooms

rest room

sleeping accommodation



technical information

DIMENSIONS
 3299mm (L) x 2305mm (W). Weight: 860kg
 4369mm (L) x 2305mm (W). Weight: 1,100kg
 External height 2345mm

WALLS:
 Vacuum bonded sandwich panels. Outer surface - 0.63mm galvanized steel electrostatic powder coated in RAL 6005 (Moss Green). Insulation - 50mm high density polystyrene. Inner surface - 0.63mm galvanized steel electrostatic powder coated in RAL 9002 (Off-White).

ELECTRICAL EQUIPMENT:
 No electrical equipment fitted.
 The unit is designed to have a surface mounted electrical installation. Optional electrical kit pack available, sold separately.

ROOF:
 Exterior covering - 0.73mm powder coated box profile galvanized steel with two gutters for effective rainwater disposal to all four corners. Interior - vacuum bonded sandwich panels. Insulation - 50mm high density polystyrene.
 Inner surface - 0.63mm galvanized steel powder coated in RAL 9002 (Off-White).
 Snow loading - 75kg/m2 evenly distributed.

CHASSIS / FRAME:
 Box profile, hot dipped galvanized steel
 Corner columns - 1.5mm cold formed DKP steel.
 Supplied with 4 lifting eyes. All surfaces are powder coated in RAL 6005 (Moss Green).
 Floor Construction - 12mm ply covered with 2mm PVC linoleum (flash point B1 difficult to burn, smoke density Q1). Floor section has no insulation.
 Floor loading - 150kg/m2 evenly distributed.

DOOR:
 Frame - cold formed powder coated galvanized steel sheet min 1.25mm. Outer Door - both surfaces powder coated (External - Moss Green, internal - Off-White) galvanized flat steel sheet. 0.73mm thick, complete with door handle and replaceable euro cylinder lock.

WINDOW:
 Aperture - cold formed powder coated galvanized steel sheet 1.25mm thick
 Window - uPVC double glazed window frame with vacuum sealed unit. (4+9+4).
 Size - 800mm x 600mm. Type - vertically inward opening mechanism with single handle and lock.

NOTE:
 Expandakabin is not designed to comply with Building Regulations approval.

storage units

offices / workshops

hazardous stores

shelters

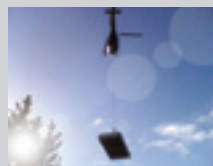
technical / features



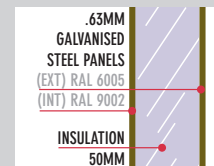
1. FULLY MODULAR, LINK UNITS TOGETHER



2. ASSEMBLED UNIT CAN BE TRANSPORTED BY TRUCK OR FORKLIFT, OR LIFTED FROM ITS LIFTING EYES BY CRANE



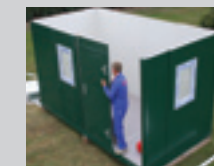
3. uPVC WINDOW FITTED AS STANDARD



4. FULLY INSULATED



5. USEFUL WORK SPACE



6. POWDER COATED FINISH INSIDE AND OUT

airports

docks

conservation areas

railways

colleges

exhibitions

festivals

emergencies



introduction

Designed for the safe storage of hazardous materials; featuring double doors for easy access and a sumped base for contained spillage, with a suspended grated floor.

Ideal for siting in locations with limited access. Light enough to be man handled and with components that are small enough to fit through small passageways.

Once erected, it can be lifted from its lifting eyes with a cargo on board.

Expandachem units can be linked together to form large open plan areas of storage space as required (side by side or end to end).

storage units

offices / workshops

hazardous stores

shelters

intro / assembly



1. THE EXPANDACHEM ARRIVES FLAT-PACKED



2. UNPACK THE PANELS



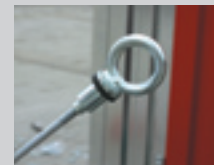
3. FIT PANELS TO THE EXPANDACHEM BASE



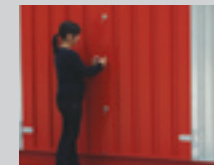
4. FIX THE HOLDING SCREWS [only a socket set required]



5. LIFT ON AND FIX THE ROOF



6. INSERT THE FOUR LIFTING RODS



7. INSTALL THE TWO DOOR LOCKS



8. THE EXPANDACHEM IS READY FOR USE

construction sites

colleges

highway maintenance

garages

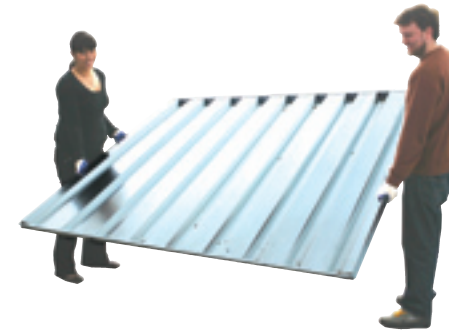
farm yards

local authorities

parks

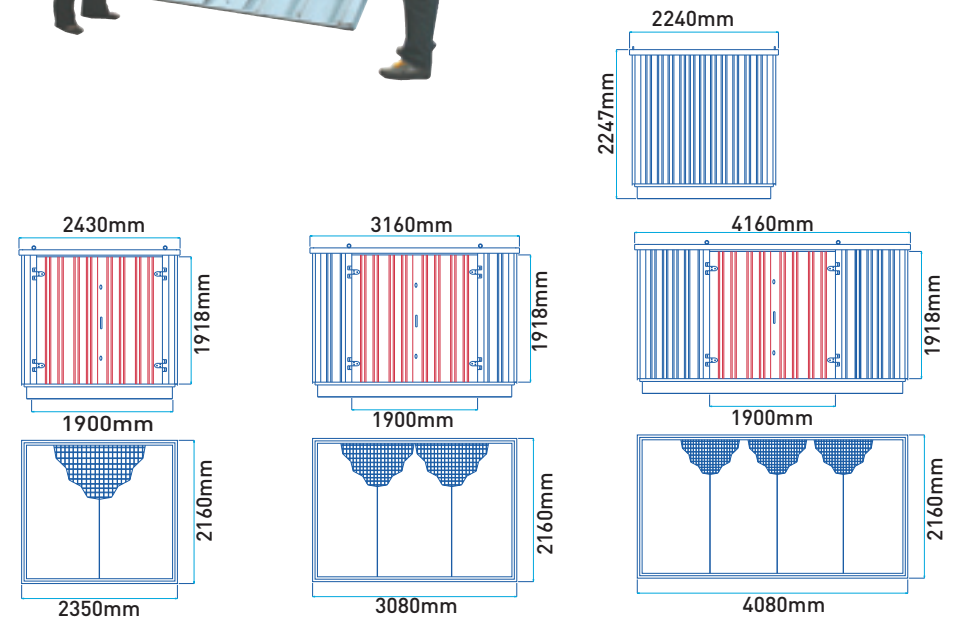
military

gardens



sizes

- 2.35m x 2.16m
- 3.08m x 2.16m
- 4.08m x 2.61m



storage units

offices / workshops

hazardous stores

shelters

sizes / accessories



1. SHELVING BRACKETS



2. SUMPED SHELVES



3. HOOK FOR CABLES AND HOSES



4. TOOL / STORAGE BINS



5. DOOR CLOSER



6. RAMP



7. LINKING KIT

allotments

landscapers

bikers

sportsfields

schools

workshops

conservation areas

offices

warehouses



expandachem



technical information

DIMENSIONS

2160mm (L) x 2305 (W). Weight: 520kg
 Sump capacity: 680 litres
 2160mm (L) x 3080 (W). Weight: 633kg
 Sump capacity: 904 litres
 2160mm (L) x 4080 (W). Weight: 781kg
 Sump capacity: 1212 litres
 External height :2247mm
 Door width: 1900mm

CONSTRUCTION COMPONENTS

The main construction elements of the hazardous store are as follows:

1. Sump
2. Floor grate – loading = 250 kg m²
3. Side wall panels
4. Roof panel
5. Double-door panels featuring the newly improved double locking system
6. Fastening elements
7. Numerous optional extras, including Forklift and Sump upgrade kit (1000 kg m²)

SIDE WALLS & ROOF PANEL

0,73 mm box profile galvanized steel panels. The panels are strengthened with spot welded galvanized steel frame sections at the edges of each panel. The roof section has two integral gutters for effective rainwater dispersal to all four corners of the container.

FASTENING ELEMENTS

Four 12 mm diameter rods are used to connect the roof to the chassis. These also form lifting eyes for use with a crane. Additional floor and roof security bolts are supplied to prevent external access.

FLOOR

Sumped chassis base, with suspended floor grate.

DOOR PANELS

0,73 mm box profile galvanized steel panel, with powder coated finish. The door panels are spot welded, and mounted into the frame with galvanized hinges. Complete with two 64mm Euro deadlocks with replaceable cylinders and a central roller catch. Double door width: 1900mm, hinged on the right and left, outward opening.

PACKING

All components of the Expandachem are specially packed to ensure that they are not damaged during transportation, loading and unloading under normal circumstances. The smallest transportation cube is achieved in this packing process.

POWDER COATING

The doors and sump chassis are powder coated in RAL3000 (Red).

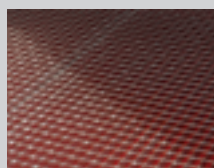
storage units

offices / workshops

hazardous stores

shelters

technical / features



1. FLOOR GRATE



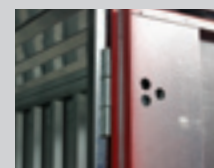
2. WIDE DOUBLE DOORS WITH PALLET ACCESS



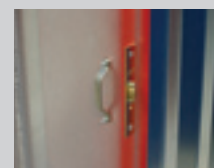
3. LIFT BY CRANE (and forklift)



4. SUMPED BASE



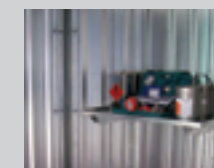
5. STRONG HINGES



6. DOUBLE LOCKING AS STANDARD



7. INTEGRAL GUTTERED ROOF



8. LOTS OF STORAGE SPACE

shops airports factories railways builders merchants

docks exhibitions oil rigs self-build sites emergencies



expandashelta



introduction

A multi-purpose open sided structure, but also designed to provide smoking accommodation to comply with the UK Smoke-free Regulations 2006.

The prefabricated Expandashelta consists of an uninsulated open volume flatpacked building.

Assembly is carried out by mounting the galvanized steel components on the ground requiring only manpower.

Assembly is quick and simple, using the nuts and bolts supplied.

Expandashelta does not require fixing to the ground like some other shelters. It can be transported either assembled or in its flat pack form

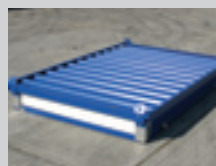
storage units

offices / workshops

hazardous stores

shelters

intro / assembly



1. THE EXPANDASHELTA ARRIVES FLAT-PACKED



2. UNPACK ALL OF THE PANELS



3. FIT CORNER POSTS TO THE BASE



4. INSERT THE SIDE WALL PANELS



5. FIT THE HOLDING NUTS AND BOLTS



6. LIFT ON AND FIX THE ROOF



7. INSTALL THE BENCH



8. THE EXPANDASHELTA IS READY FOR USE

pubs

construction sites

bus shelters

hotels

taxi ranks

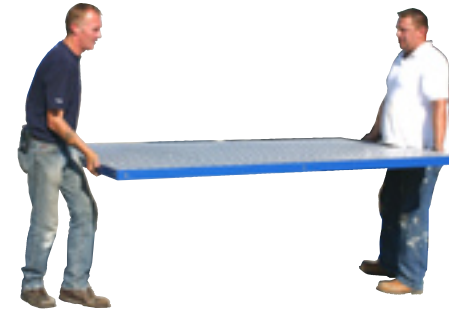
restaurants

local authorities

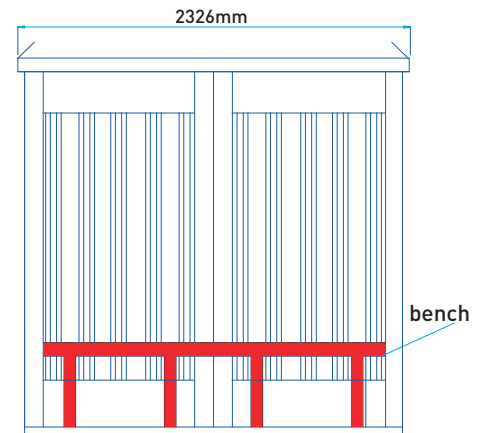
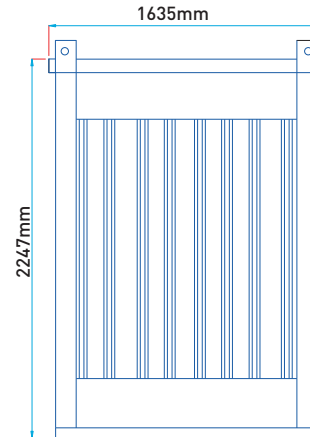
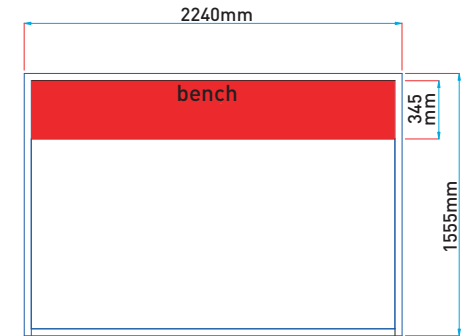
parks

bars

gardens



size - 1.6m x 2.3m



storage units

offices / workshops

hazardous stores

shelters

sizes / accessories



1. BENCHES



2. DISABLED ACCESS RAMP



3. ASHTRAY



4. THE STANDARD OPTION IS GALVANIZED, BUT POWDER COATED OPTIONS (INSIDE AND OUT) ARE AVAILABLE IN BLUE AND GREEN



golf courses

landscapers

bike shelter

conservation areas

sportsfield dug-outs

town centres

waiting room

factories



technical information

DIMENSIONS
 1600mm (D) x 2300mm (W). Weight 200kg
 External height 2247mm

COMPONENTS
 The main construction elements of the container are as follows:

1. Chassis
2. Side wall panels
3. Roof panel
4. Fastening elements
5. Seat/bench
6. Lifting eyes

FLOOR
 Aluminium chequerplate.

FRAME/BODY
 Box profile hot dipped galvanized steel.

CHASSIS
 The chassis is manufactured by fastening the aluminium chequerplate to a frame constructed of galvanized steel profiles by means of screws and steel rivets.

SIDE WALLS & ROOF PANEL
 0.73 mm galvanized steel sheets in trapezoidal cross section. The panels are manufactured by fixing them to galvanized steel frame profiles using a spot welding process.

PACKING
 All components of the Expandashelta are specially packed to ensure that they are not damaged during transportation, loading and unloading under normal circumstances. The smallest transportation volume is achieved in this packing process.

storage units

offices / workshops

hazardous stores

shelters

technical / features



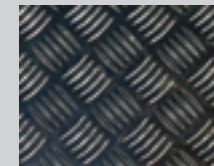
1. NO FOUNDATIONS REQUIRED



2. GUTTERED ROOF



3. LIFT BY CRANE (and forklift)



4. TOUGH GRIPPED FLOOR



5. STRONG PROFILED PANELS



6. GOOD SITTING AND STANDING SPACE



7. BUILT IN DRAINAGE SYSTEM



8. WELL VENTILATED / PROTECTIVE SHELTER

airports

docks

highway maintenance

railways

colleges

exhibitions

festivals

emergencies



expandarange

flat-packed, man-portable,
expandable buildings



Buy all these products online at: www.extraspace.co.uk
or tel: 0845 330 3713. We accept these credit cards:

Ask about our other building ranges:



bespoke, modular,
portable buildings

modularange



secure, anti vandal,
portable buildings

armarange

extraspace

Due to our continuous product development programme, we reserve the right to change the specifications without prior notice.