



# Pillar Base Table Frames

STANDARD & CABLE MANAGED



## Price List and Information Pack

JULY 2013



## Pillar Base Frame Options & General Info

PAGE 3

### PILLAR BASES



### Pillar Base Table - Pricelist

PAGE 4-5

### Pillar Base Table - Frame Details

PAGE 6-7

### Pillar Base Table - Drilling Positions

PAGE 8-11

### Pillar Base Table - Assembly Instructions

PAGE 12-15

### ACCESSORIES

### Accessory Price List

PAGE 16

### STATEMENTS

### Specification, Maintenance, Environmental

PAGE 17

## PILLAR BASE TABLES - OPTIONS & GENERAL INFO

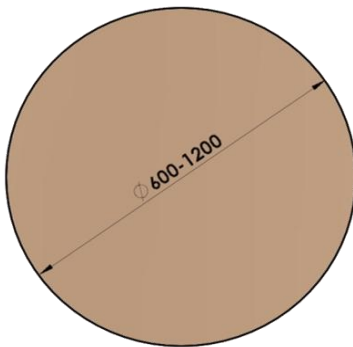


Designed and manufactured in the UK, Rack's Pillar Base Table Frames are available in 3 heights, with or without cable management & with 2 base plate designs. Supplied without tops and in a 'knock down' format, these simple self assembly table bases accommodate square and round table tops, up to a maximum diameter of 1200mm (weight plate required for top diameter in excess of 900mm).

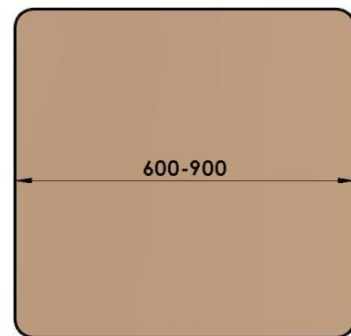
- \* Cable Managed Option
- \* 3 Heights available - Coffee / Dining / Poseur
- \* 2 Base Plate Designs - Round / Square
- \* Polished Stainless Steel Base Plate Option
- \* Weight plate option for greater stability

## TOP SIZE RANGE

### ROUND

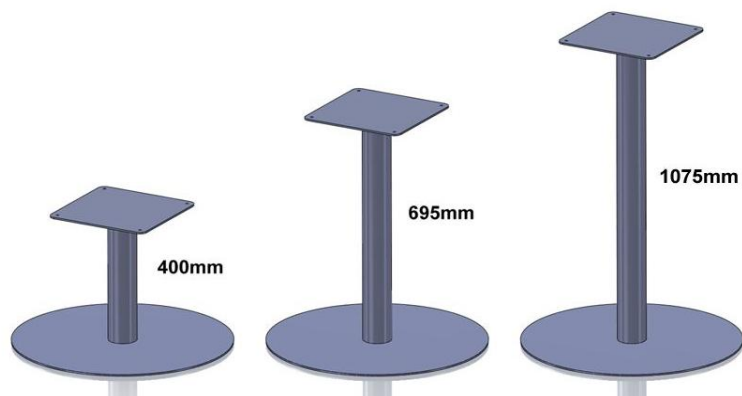


### SQUARE



WEIGHT PLATE RECOMMENDED FOR TOP DIAMETERS GREATER THAN 900mm

## HEIGHT RANGES (excluding top)



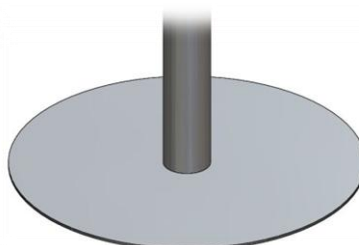
## BASE DESIGNS

Pillar base tables are available with a number of different base options :-

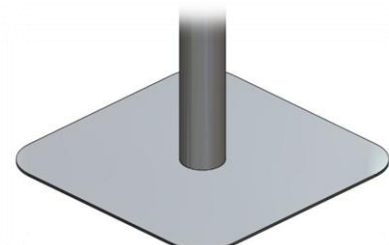
- \* 450 mm Round
- \* 600 mm Round
- \* 500 mm Square

The bases are all available in either standard powder coat finish or with a polished stainless steel top cover plate.

### ROUND



### SQUARE



# Pillar Base Tables



PILLAR BASE UPRIGHTS	Size	Order Code	Ex Works Price
	Coffee (400mm)	PBT-CTU	
	Dining (695mm)	PBT-DTU	
	Poseur (1075mm)	PBT-PTU	

BASE PLATES	Size	Order Code	Ex Works Price
	450 Round	PBT-RB-4	
	600 Round	PBT-RB	
	500 Square	PBT-SB	

WEIGHT PLATES (FOR USE WITH TOP DIAMETERS GREATER THAN 900mm - ORDER IN ADDITION TO BASE PLATE)	Size	Order Code	Ex Works Price
	450 Round	PBT-RW-4	
	600 Round	PBT-RW	
	500 Square	PBT-SW	

POLISHED STAINLESS BASE PLATES	Size	Order Code	Ex Works Price
	450 Round	PBT-RB-S4	
	600 Round	PBT-RB-S	
	500 Square	PBT-SB-S	

POLISHED STAINLESS WEIGHT PLATES (FOR USE WITH TOP DIAMETERS GREATER THAN 900mm - ORDER IN ADDITION TO BASE PLATE)	Size	Order Code	Ex Works Price
	450 Round	PBT-RW-S4	
	600 Round	PBT-RW-S	
	500 Square	PBT-SW-S	

## HOW TO ORDER

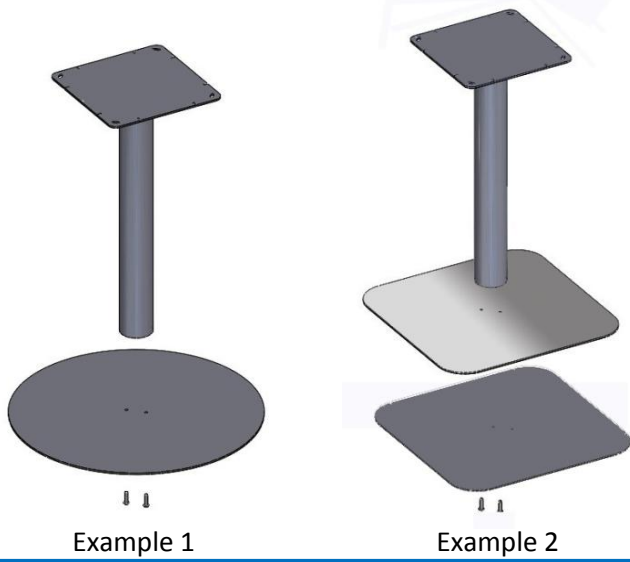
### EXAMPLE:

To order a 600 Round Dining Pillar Base Table, the following components will be required:

- Step 1..... Select upright to suit required height:  
e.g. **PBT-DTU** x1
- Step 2..... Select base plate:  
e.g. **PBT-RB** x1

To order a 500 Square Poseur Pillar Base Table with Stainless Weight Plate, the following components will be required:

- Step 1..... Select upright to suit required height:  
e.g. **PBT-PTU** x1
- Step 2..... Select base plate:  
e.g. **PBT-SB** x1
- Step 3..... Select weight plate  
e.g. **PBT-SW-S** X1



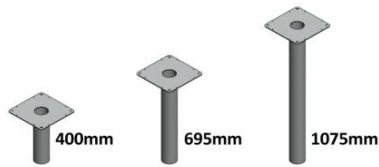
Example 1

Example 2

# Pillar Base Tables



## CABLE MANAGED PILLAR BASE UPRIGHTS



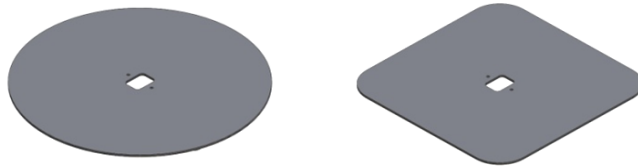
Size	Order Code	Ex Works Price
Coffee (400mm)	PBT-CM-CTU	
Dining (695mm)	PBT-CM-DTU	
Poseur (1075mm)	PBT-CM-PTU	

## BASE PLATES



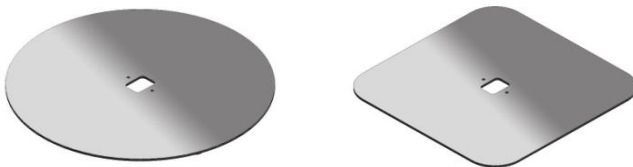
Size	Order Code	Ex Works Price
450 Round	PBT-CM-RB-4	
600 Round	PBT-CM-RB-6	
500 Square	PBT-CM-SB-5	

## WEIGHT PLATES (FOR USE WITH TOP DIAMETER GREATER THAN 900mm - ORDER IN ADDITION TO BASE PLATE)



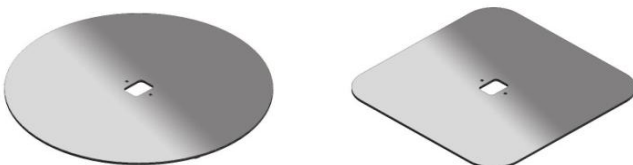
Size	Order Code	Ex Works Price
450 Round	PBT-CM-RW-4	
600 Round	PBT-CM-RW-6	
500 Square	PBT-CM-SW-5	

## POLISHED STAINLESS BASE PLATES



Size	Order Code	Ex Works Price
450 Round	PBT-CM-RB-S4	
600 Round	PBT-CM-RB-S6	
500 Square	PBT-CM-SB-S5	

## POLISHED STAINLESS WEIGHT PLATES (FOR USE WITH TOP DIAMETER GREATER THAN 900mm - ORDER IN ADDITION TO BASE PLATE)



Size	Order Code	Ex Works Price
450 Round	PBT-CM-RW-S4	
600 Round	PBT-CM-RW-S6	
500 Square	PBT-CM-SW-S5	

## HOW TO ORDER

### EXAMPLE:

To order a 600 Round Cable Managed Dining Pillar Base Table, the following components will be required:

Step 1..... Select upright to suit required height:

e.g. **PBT-CM-DTU** x1

Step 2..... Select a base plate:

e.g. **PBT-CM-RB-6** x1

To order a Cable Managed 500 Square Poseur Pillar Base Table with Stainless Weight Plate, the following components will be required:

Step 1..... Select upright to suit required height:

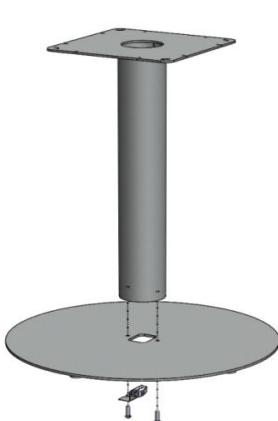
e.g. **PBT-CM-PTU** x1

Step 2..... Select a base plate:

e.g. **PBT-CM-SB-5** x1

Step 3..... Select stainless weight plate

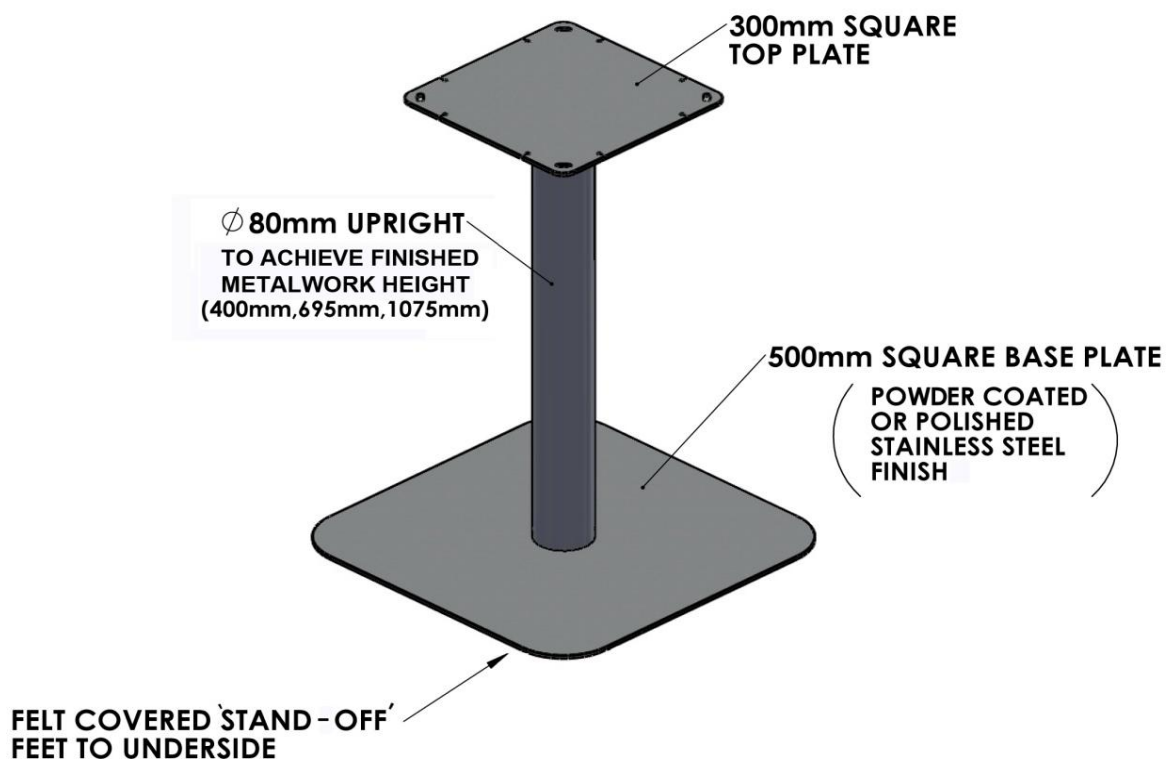
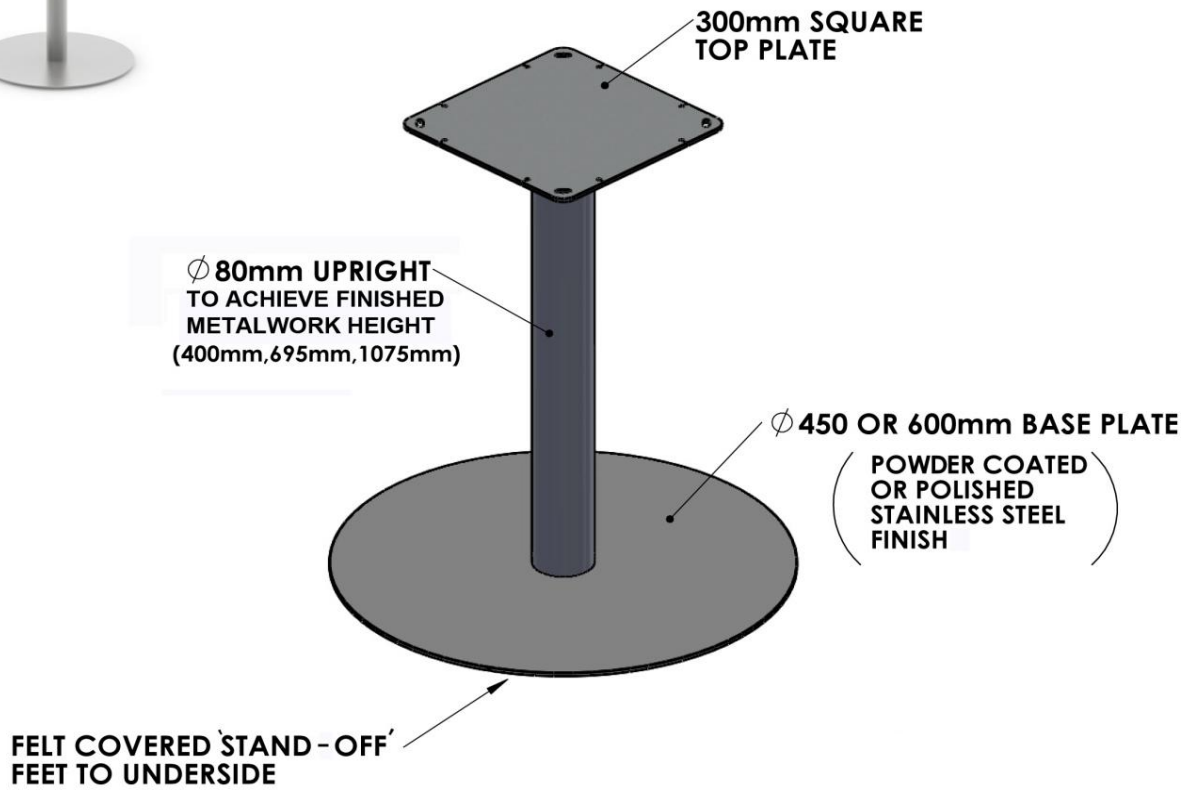
e.g. **PBT-CM-SW-S5** X1

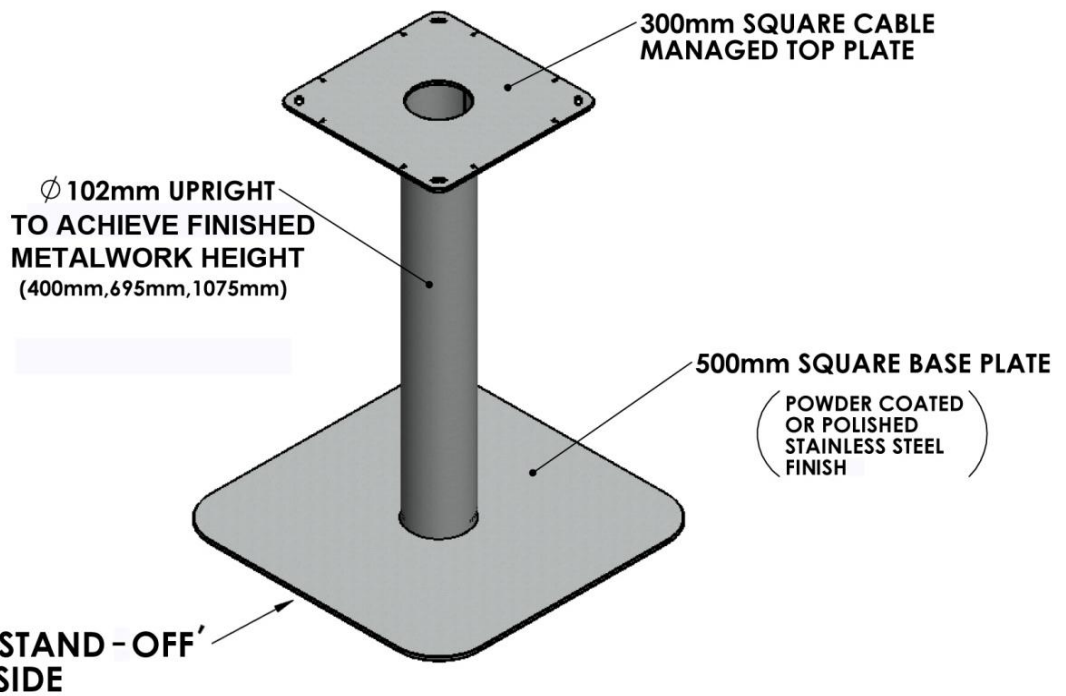
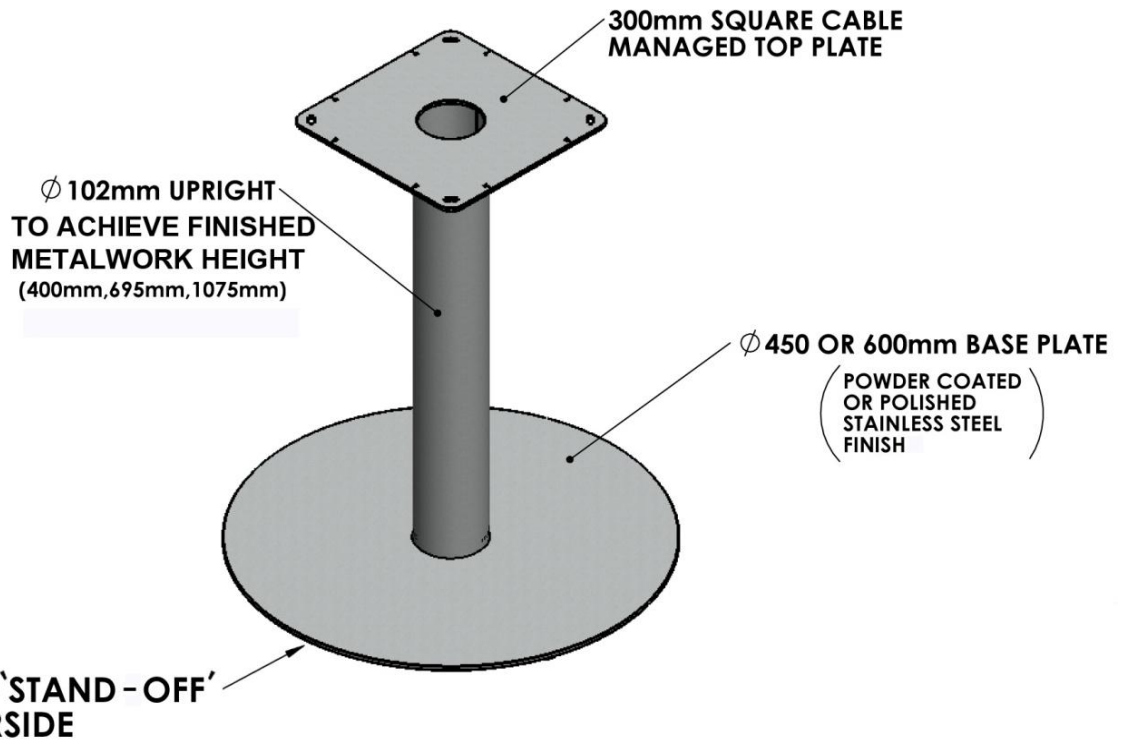


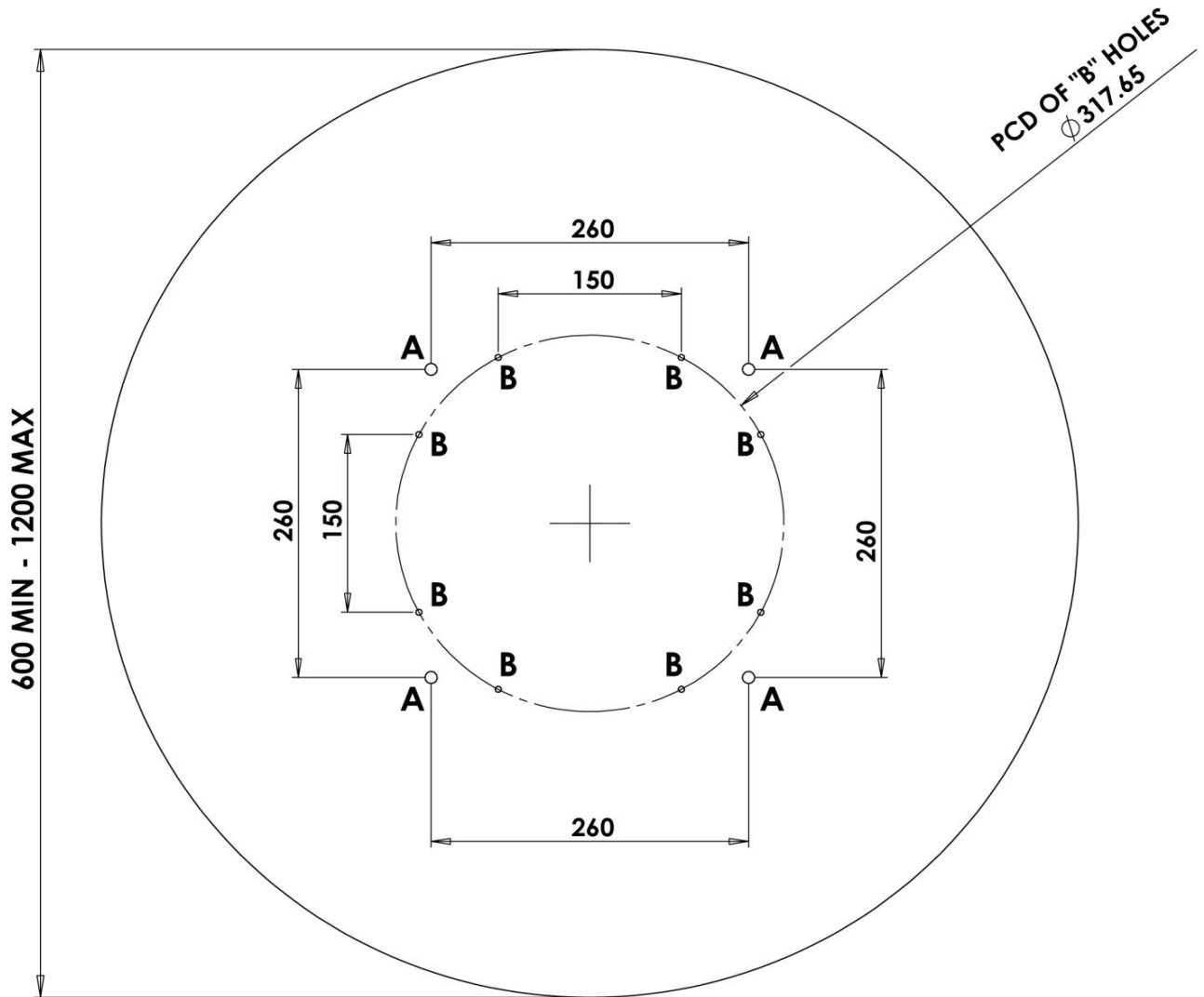
EXAMPLE 1



EXAMPLE 2







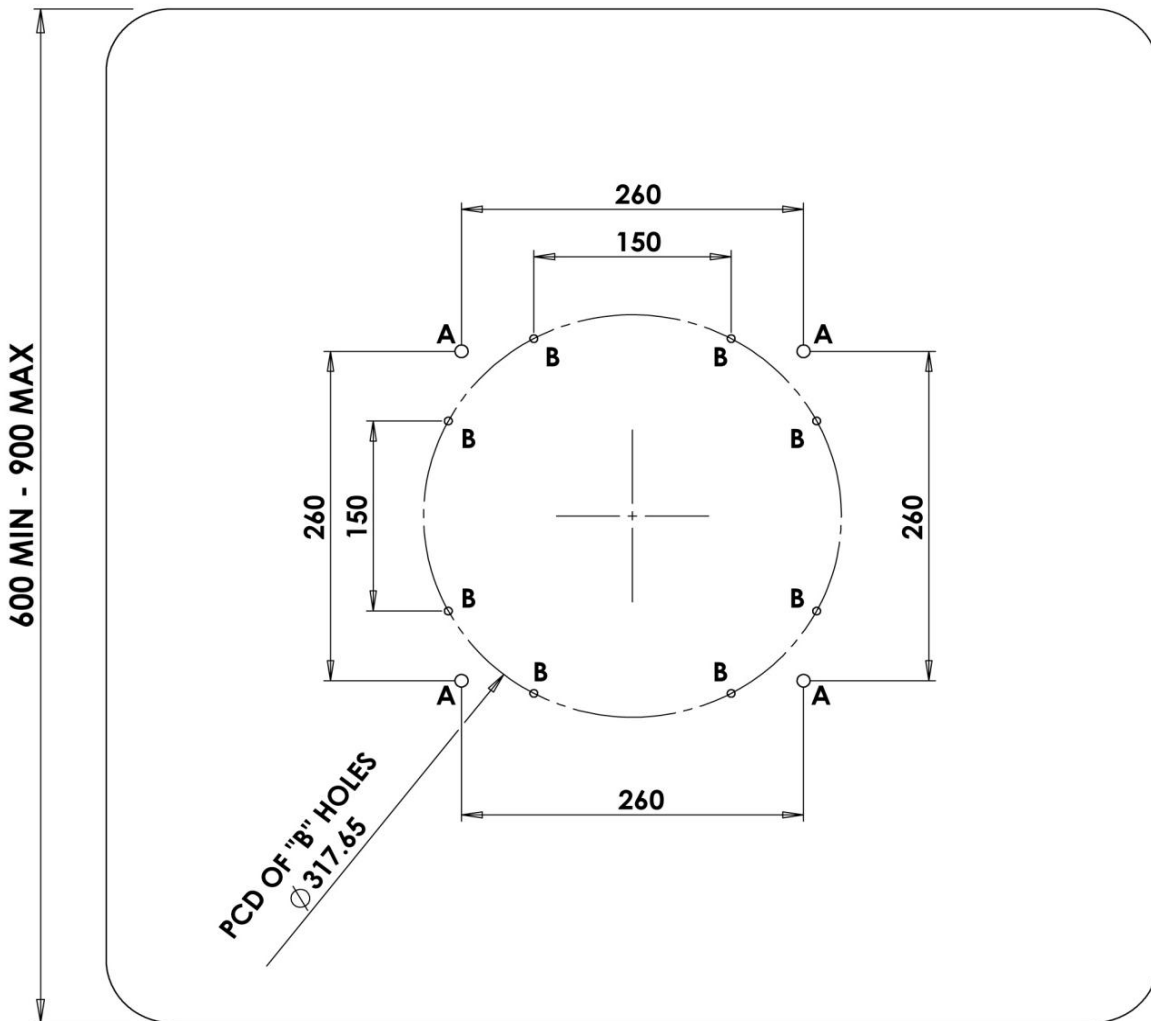
## HOLE DETAILS:

A = HOLES T/S M6 INSERTS

B = OPTIONAL PILOT HOLES T/S SELF TAPPING SCREWS ON PCD  $\phi$  317.65

<b>CUSTOMER/RANGE:</b> PILLAR BASE TABLE	<b>DESCRIPTION:</b> TOP DRILLING DETAILS	RACK SYSTEMS (ENG) LIMITED 52-56 DOVE WAY KIRKBY MILLS INDUSTRIAL ESTATE KIRKBYMOORSIDE YORK YO62 6QR	<b>REV REF/DATE</b>	<b>ISSUE:</b> 01
<b>CUSTOMER/RACK PART No</b>	<b>LCB/PART No</b>		<b>DRAWN BY:</b> K.J.S 22/01/2013	



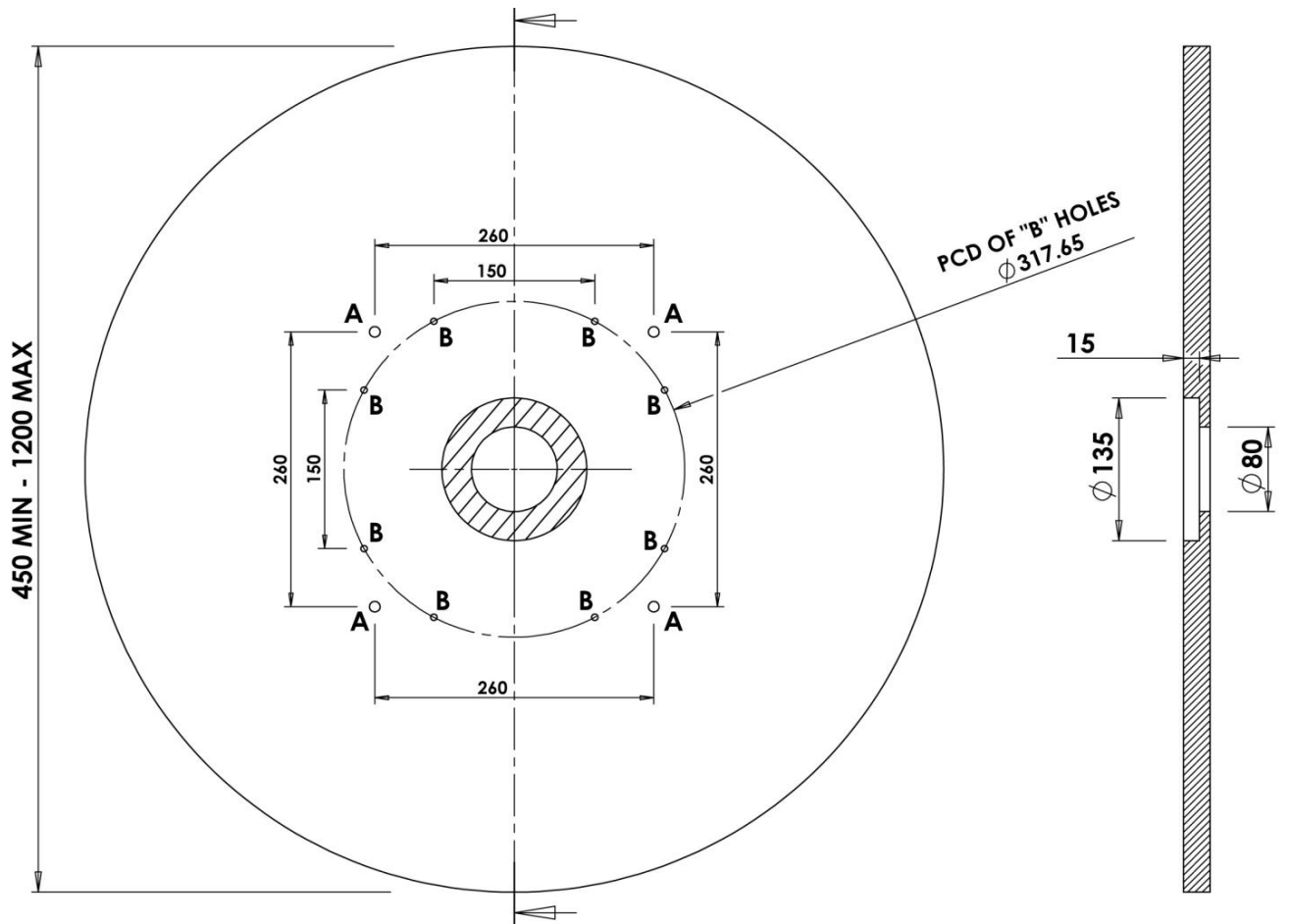


## HOLE DETAILS:

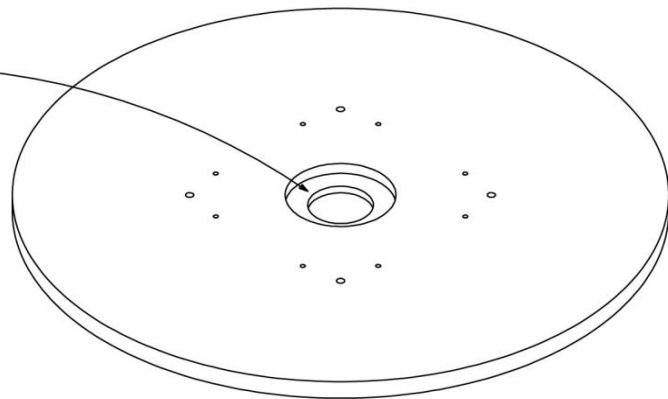
A = HOLES T/S M6 INSERTS

B = OPTIONAL PILOT HOLES T/S SELF TAPPING SCREWS ON PCD  $\phi 317.65$

<b>CUSTOMER/RANGE:</b> PILLAR BASE TABLE	<b>DESCRIPTION:</b> TOP DRILLING DETAILS	RACK SYSTEMS (ENG) LIMITED 52-56 DOVE WAY KIRKBY MILLS INDUSTRIAL ESTATE KIRKBYMOORSIDE YORK YO62 6QR	<b>REV REF/DATE</b>	<b>ISSUE:</b> 01
<b>CUSTOMER/RACK PART No</b>	<b>LCB/PART No</b>		<b>DRAWN BY:</b> K.J.S 22/01/2013	



COUNTER BORE  
15mm DEEP

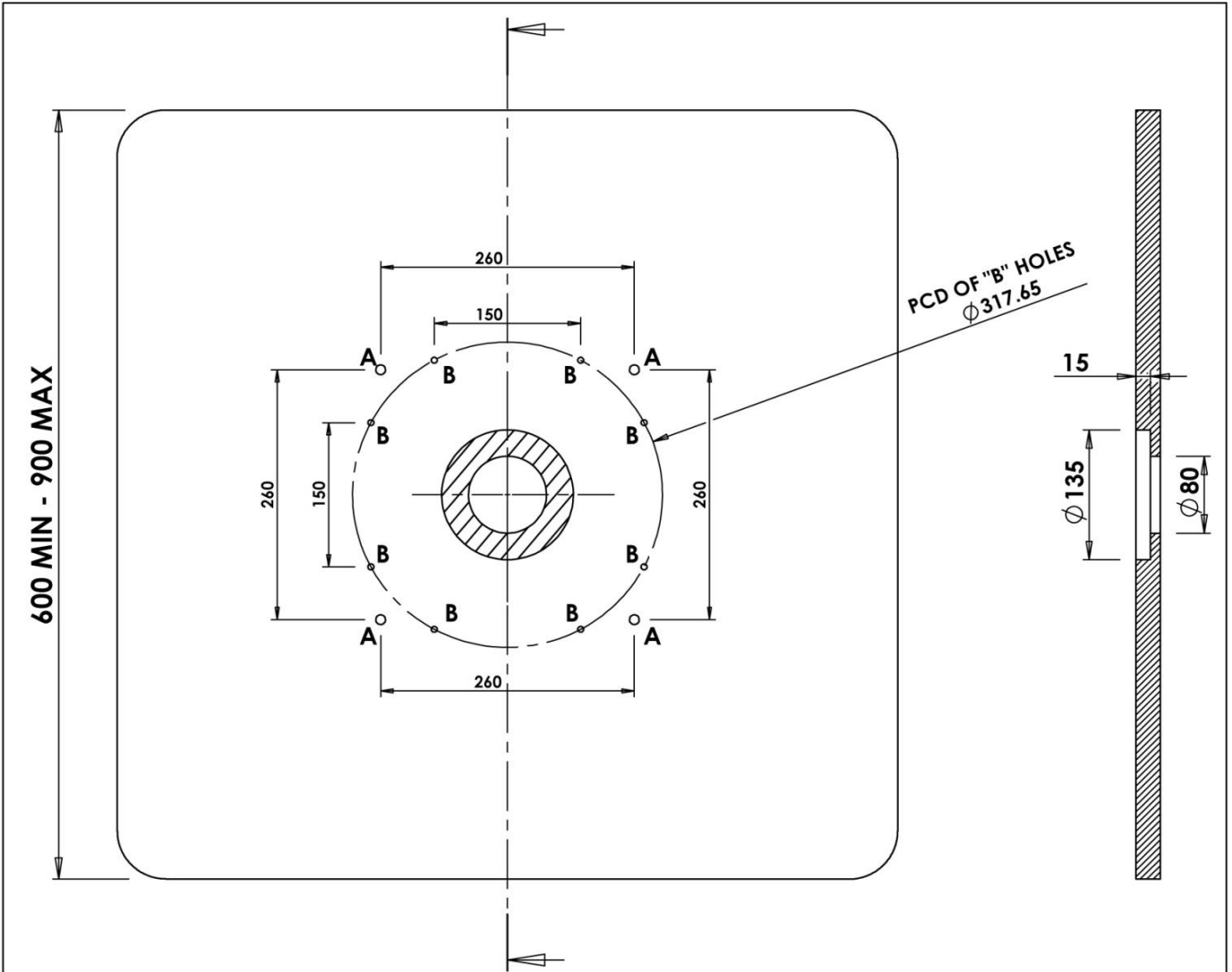


## HOLE DETAILS:

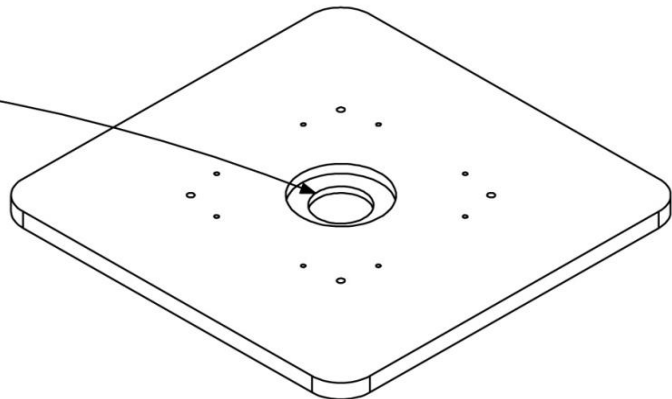
A = HOLES T/S M6 INSERTS

B = OPTIONAL PILOT HOLES T/S SELF TAPPING SCREWS ON PCD  $\phi$  317.65

<b>CUSTOMER/RANGE:</b> CABLE MANAGED PILLAR BASE TABLE	<b>DESCRIPTION:</b> TOP DETAILS	RACK SYSTEMS (ENG) LIMITED 52-56 DOVE WAY KIRKBY MILLS INDUSTRIAL ESTATE KIRKBYMOORSIDE YORK YO62 6QR	<b>REV REF/DATE:</b> ...../...../.....	<b>ISSUE:</b> 01
<b>CUSTOMER/RACK PART No</b>	<b>LCB/PART No</b>		<b>DRAWN BY:</b> K.J.S 03/10/2012	



COUNTER BORE  
15mm DEEP



## HOLE DETAILS:

A = HOLES T/S M6 INSERTS

B = OPTIONAL PILOT HOLES T/S SELF TAPPING SCREWS ON PCD  $\phi$  317.65

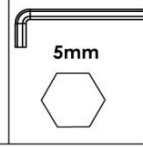
<b>CUSTOMER/RANGE:</b> CABLE MANAGED PILLAR BASE TABLE	<b>DESCRIPTION:</b> TOP DETAILS	RACK SYSTEMS (ENG) LIMITED 52-56 DOVE WAY KIRKBY MILLS INDUSTRIAL ESTATE KIRKBYMOORSIDE YORK YO62 6QR	<b>REV REF/DATE:</b> ....././..	<b>ISSUE:</b> 01
<b>CUSTOMER/RACK PART No</b>	<b>LCB/PART No</b>		<b>DRAWN BY:</b> K.J.S 03/10/2012	



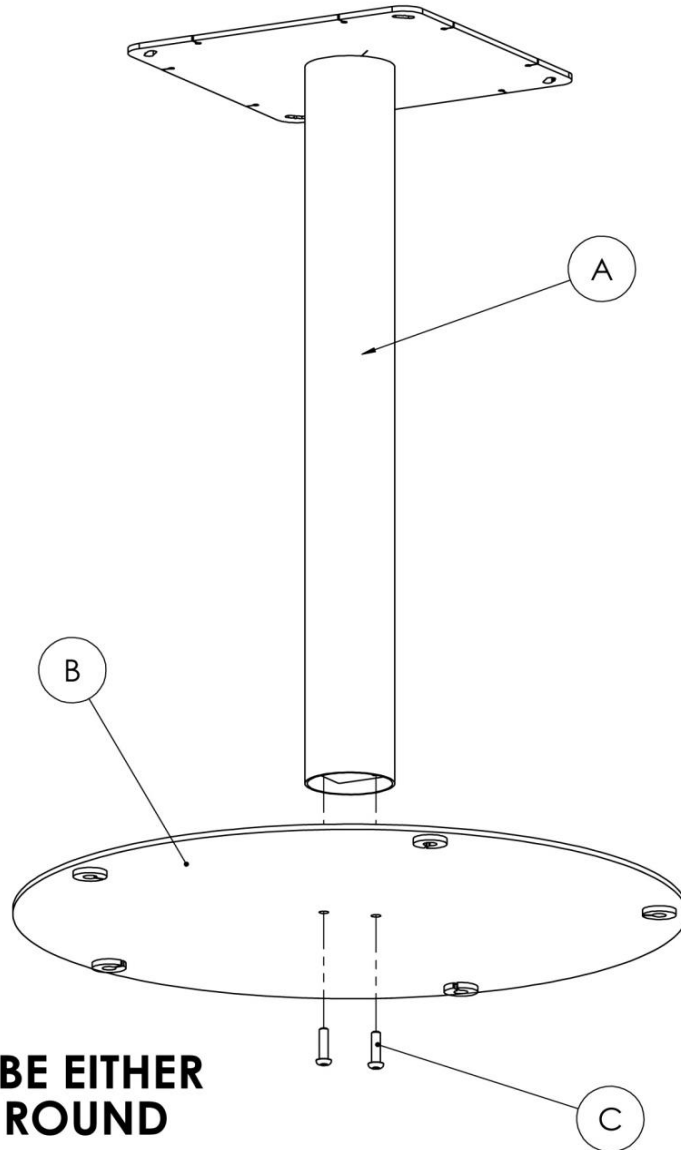
2 MINS



X1

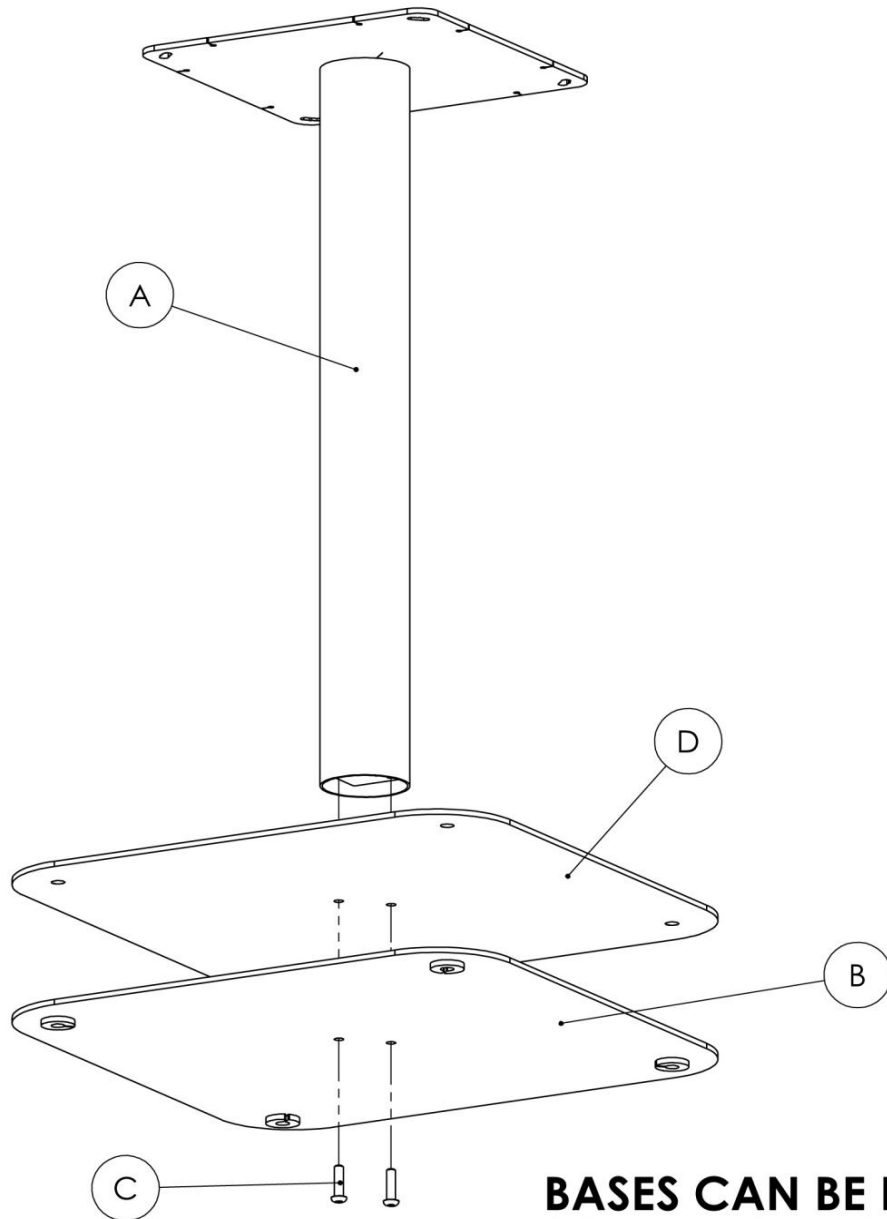
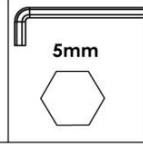


5mm



**BASES CAN BE EITHER SQUARE OR ROUND**

	PILLAR BASE UPRIGHT	ROUND BASE	M8 X 30 HEX HEAD						
Pcs	A	B	C	D	E	F	G	H	I
Qty	1	1	2						



**BASES CAN BE EITHER SQUARE OR ROUND**

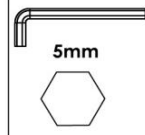
	PILLAR BASE UPRIGHT	SQUARE BASE PLATE	M8 X 30 HEX HEAD	WEIGHT PLATE					
Pcs	A	B	C	D	E	F	G	H	I
Qty	1	1	2	1					



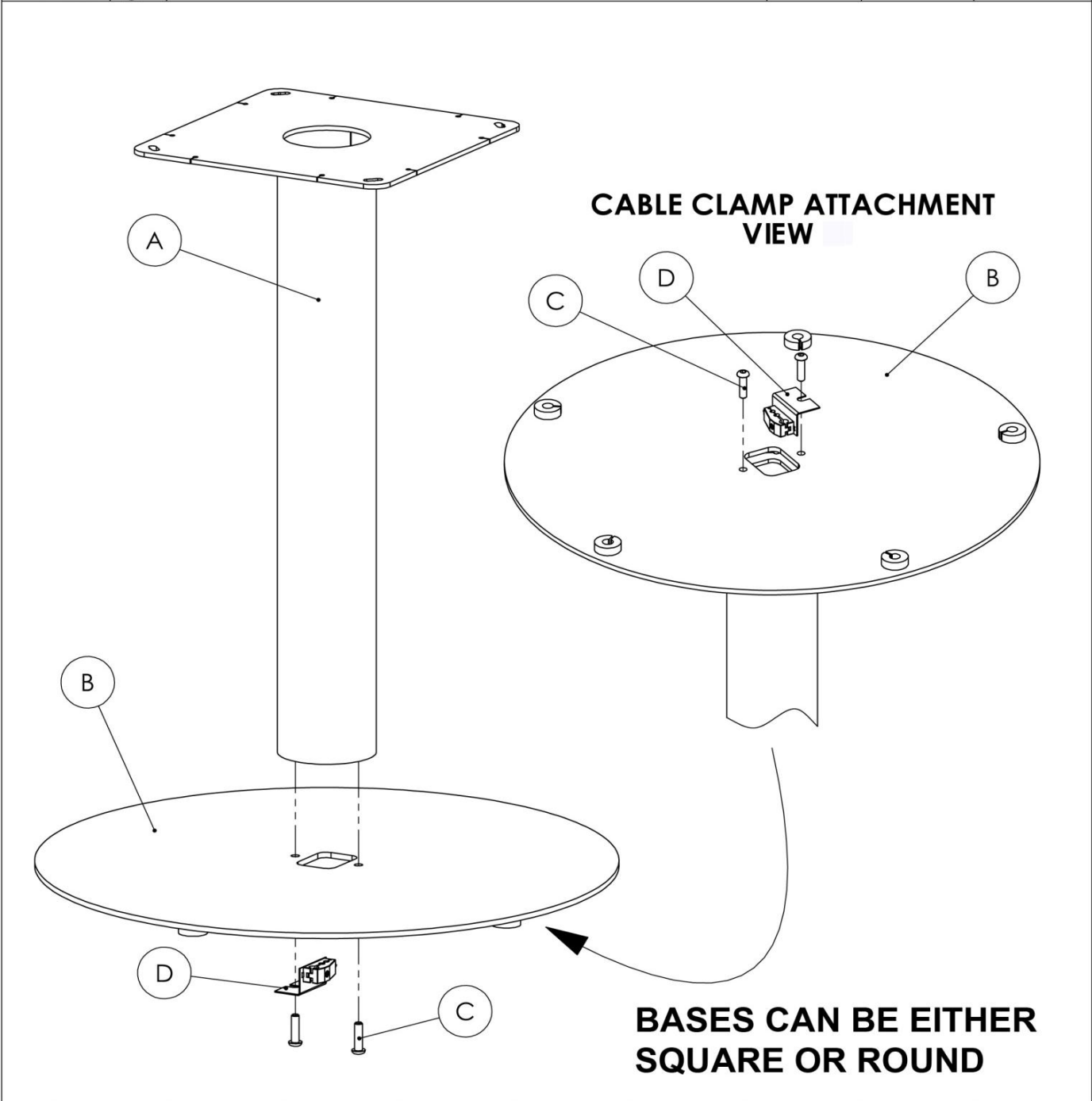
2 MINS



X1



5mm



**BASES CAN BE EITHER SQUARE OR ROUND**

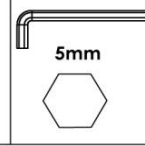
	PILLAR BASE UPRIGHT	ROUND BASE PLATE	M8 X 30 HEX HEAD	CABLE CLAMP ASSY					
Pcs	A	B	C	D	E	F	G	H	I
Qty	1	1	2	1					



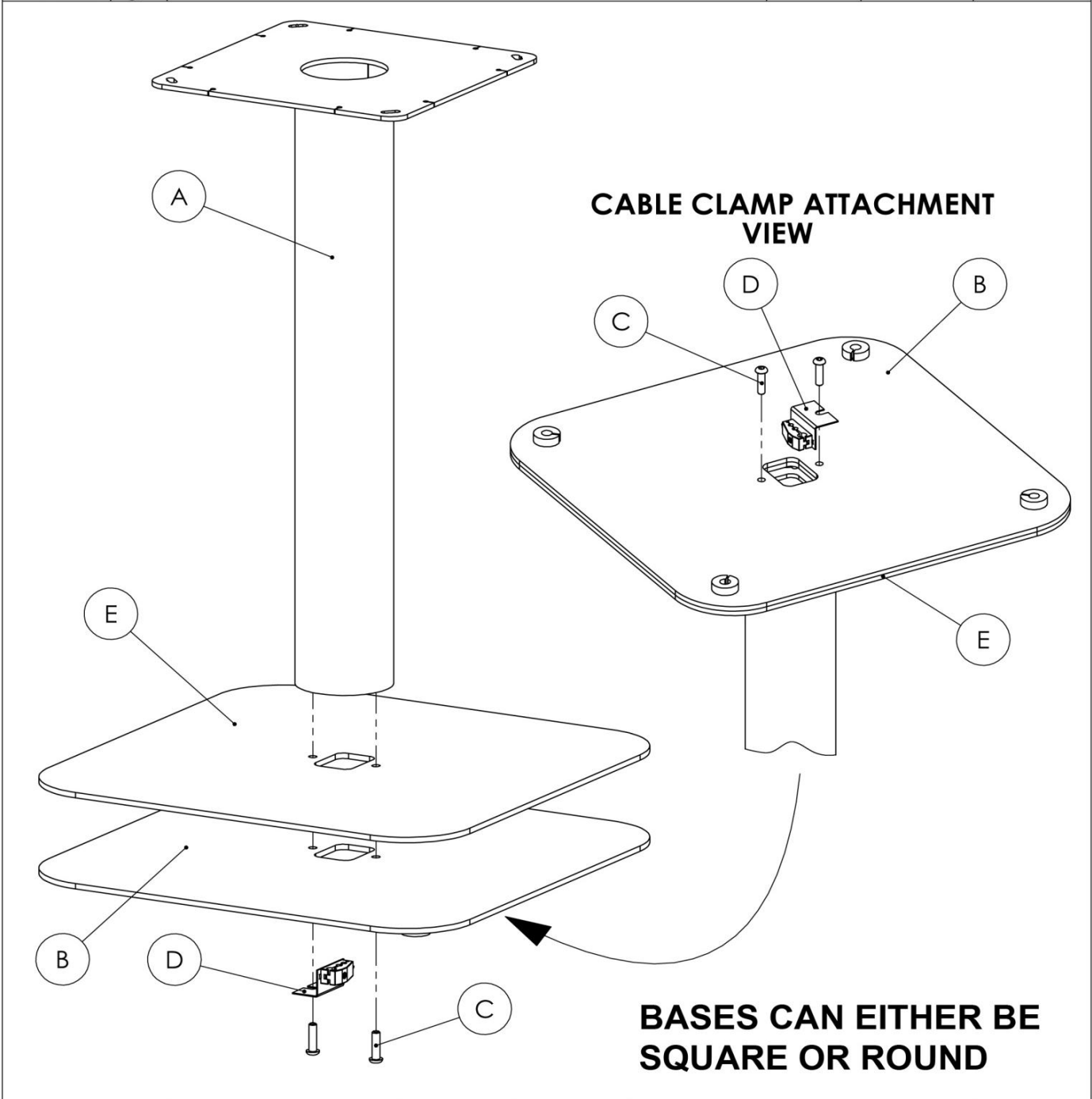
2 MINS



X1



5mm



**BASES CAN EITHER BE SQUARE OR ROUND**

	PILLAR BASE UPRIGHT	SQUARE BASE PLATE	M8 X 30 HEX HEAD	CABLE CLAMP ASSY	WEIGHT PLATE				
Pcs	A	B	C	D	E	F	G	H	I
Qty	1	1	2	1	1				

## CABLE MANAGED PILLAR BASE TABLE - ACCESSORIES

### POWER /DATA MODULE

CODE

PRICE EACH



#### 90U001G

'PortHole' is an easy fit through-desk power and data module that has been designed to fit any desk that has a standard 80mm grommet hole. This stylish module is grey with a silver trim, and is supplied with power and data sockets. The module is quick and easy to fit using a simple tool free fixing nut, which allows the module to be fitted in seconds.

#### PORTHOLE



### WEILAND STARTER LEAD

CODE

PRICE EACH



#### 600003 (2 METRE)

- 3 pole male and female pre-moulded connectors with 1.5mm<sup>2</sup> cable
- Available in black
- Connectors comply with BS 5733



## SPECIFICATION

Pillar base table frames are designed and manufactured principally for use within office environments. Fabricated from 14 gauge (or 2mm) mild steel tubular sections, and 5/6mm Steel Plate.

Pillar base table frames are supplied in knock down format, and packaged in reinforced cardboard boxes with protective plastic mesh sleeving for protection and to facilitate ease of transportation.

## MAINTENANCE

Pillar base table frames are considered to be maintenance free, however the following should be observed during the frame's lifetime:-

Where cleaning of the frame is required a mild detergent solution should be used. The use of harsh abrasives, acids, alkalis or bleaching products is not recommended.

Following these simple maintenance procedures will enable trouble free use of the frame. In the unlikely event any problems do occur, then please contact Rack.

## ENVIRONMENTAL STATEMENT

Rack does not hold any formal environmental accreditations, however, the management team takes the company's social and environmental responsibilities very seriously.

Rack is a family owned company based in a small rural community at the foot of the North Yorkshire Moors, bordering the National Park.

Rack operates from a newly constructed purpose built manufacturing facility, which houses some of the most up to date, energy efficient fabrication equipment available. This includes online powder coating with closed loop powder recovery, robotic welding, and automated all electric, lights out laser and turret punching profiling equipment.

Rack subscribes to the principles of lean manufacturing, and produces very low quantities of waste materials. Any waste materials that are produced including steel, aluminium, timber, cardboard and all plastic packaging are sent for recycling.

The management team believe that Racks impact upon the environment is minimal, and would invite anyone to come and inspect our operation.

Please study the chart below detailing our recycled content figures:

MATERIAL	RECYCLED CONTENT %	POST CONSUMER CONTENT %	POST INDUSTRIAL %	CAN BE RECYCLED (Y/N)
STEEL TUBE	55%	100%	100%	YES
STEEL SHEET	55%	100%	100%	YES
PLASTIC PARTS	10%	90%	90%	YES
CARDBOARD PACKAGING	80%	100%	100%	YES
PLASTIC PACKAGING	50%	100%	100%	YES
PALLETS	100%	100%	100%	YES