

Mazak

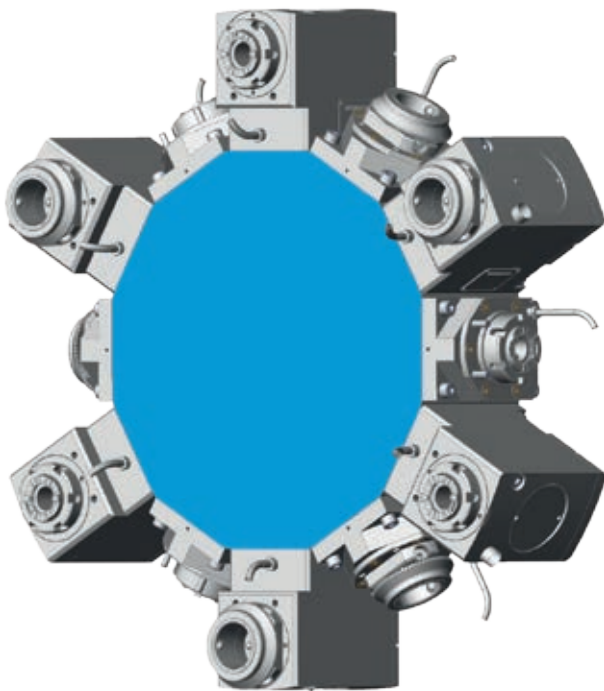
QUICK TURN SMART 100 M / 200 M

Data

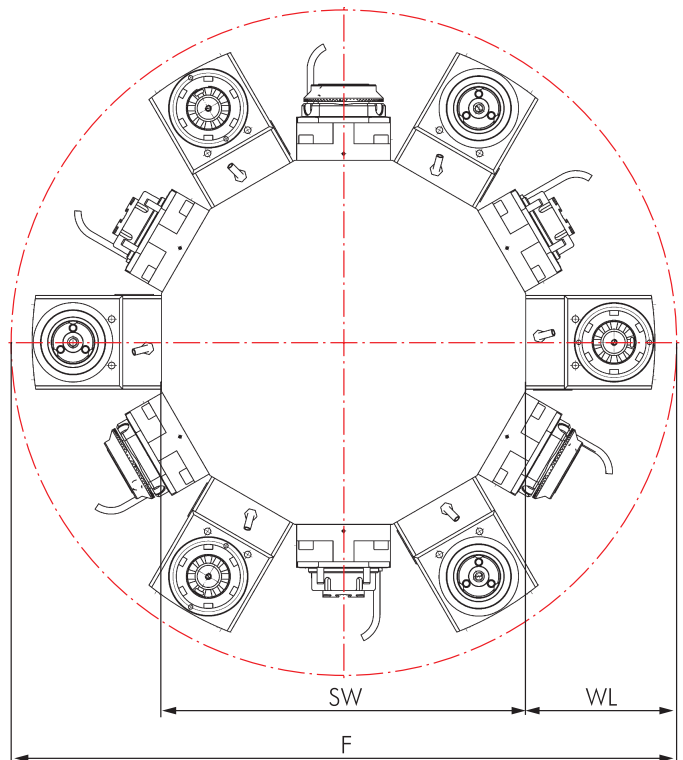
Machine Type Series	Turret Stations
QTS 100 M	12
QTS 200 M	12



Star-Type Turret BMT



Interference Circles





Machine type Series	F	SW	WL
QTS 100 M	564	330	117
QTS 200 M	580	330	125

Mazak

QUICK TURN SMART 100 M / 200 M

Connectable in accordance with **BLUECOMPETENCE** » mimatic mi » PolyMILL » TriMILL » TrioCut » PolyREAM

Live Tools

	Page		Page
Straight Unit			296
Angle Unit			297

Options and Accessories

mi Toolholders		mi System Description Toolholders Accessories	471 473-477 478-479
Static Toolholders for MAZAK		Static Toolholders Accessories	499-509 510-511
Accessories		Collets DIN 6499 Threading Collets Wrenches Clamping Nuts Sleeves and Bushings	526-527 528-529 525 525 531



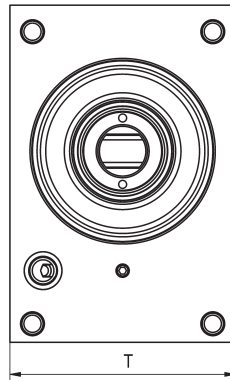
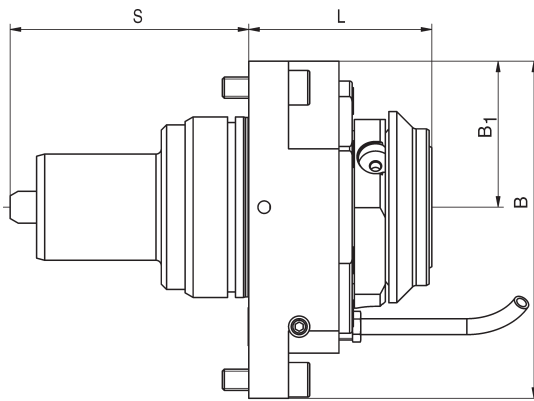
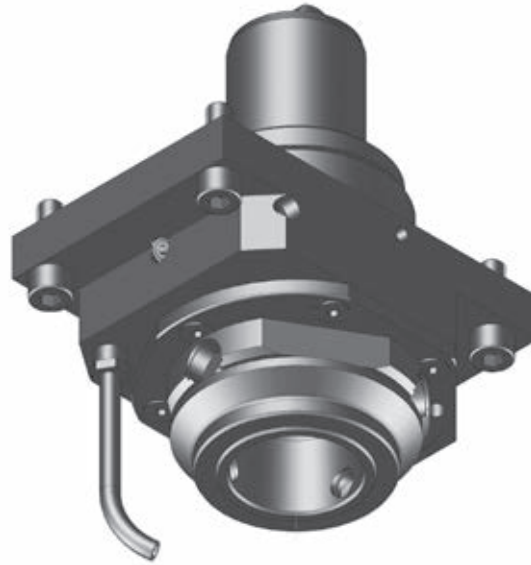
Delivery information

Driven toolholders with mi quick-change interface are supplied with operating wrench (see spare parts on page 479).
Driven toolholders with other interfaces are supplied without clamping wrench (see accessories on page 525).

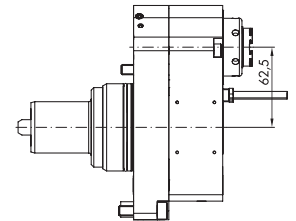
Straight Unit, Offset and without Offset Type

Connectible in accordance with **BLUECOMPETENCE** » mimatic mi » PolyMILL » TriMILL » TrioCut » PolyREAM

for Manufacturer	
Mazak	
for Machine Type	
QUICK TURN SMART 100 M/200M	
QTS	
100M 200M	
Dimensions	
Turret Type	Star-Type Turret
Shank	BMT Ø 68 mm
Drive	Tang
SW	12 mm
Modular Interfaces	
mimaticMi	



With offset:

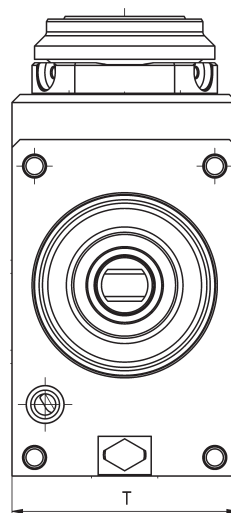
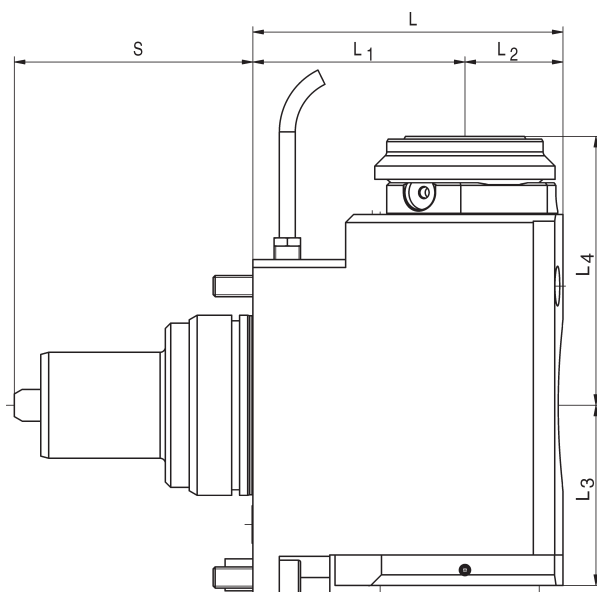
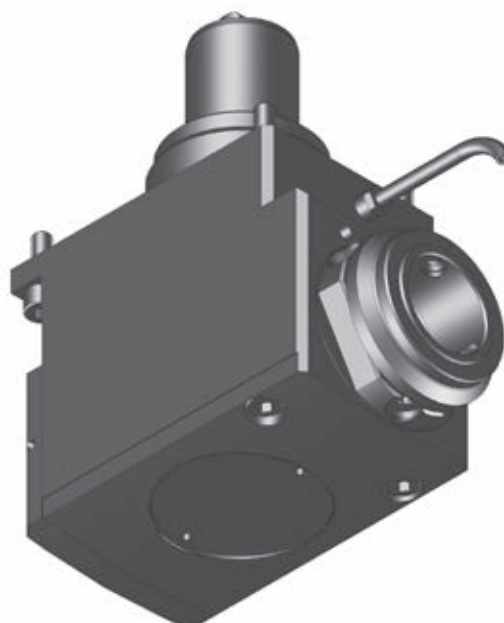


Order No.	Tool Holder	Clamping Range mm	Torque max.	n1/n2 (max.) (r.p.m.)	Gear Ratio	Coolant	L mm	A mm	B mm	B1 mm	S mm	T mm	Rotating direction
162920	ER 25	0,5-16	80 Nm	6.500 / 6.500	i = 1:1	external	90	0	85	42,5	80	127	↺ ↻
176781	ER 25*	0,5-16	80 Nm	6.500 / 6.500	i = 1:1	internal	90	0	85	42,5	80	127	↻ ↺
162921	ER 32	1,0-20	80 Nm	6.500 / 6.500	i = 1:1	external	81	0	85	42,5	80	127	↺ ↻
176783	ER 32*	1,0-20	80 Nm	6.500 / 6.500	i = 1:1	internal	81	0	85	42,5	80	127	↻ ↺
174673	ER 32	1,0-20	80 Nm	6.500 / 6.500	i = 1:1	external	60	0	85	42,5	80	127	↺ ↻
174674	ER 32*	1,0-20	80 Nm	6.500 / 6.500	i = 1:1	internal	60	0	85	42,5	80	127	↻ ↺
174901	mi 50	-	80 Nm	6.500 / 6.500	i = 1:1	internal	69	0	85	42,5	80	127	↺ ↻
With offset 62,5 mm:													
177631	ER 25	0,5-16	25 Nm	4.000 / 6.000	i = 1:1,5	internal	84,5	62,5	167	95	90	85	↺ ↻

Angle Unit

Connectable in accordance with **BLUECOMPETENCE** » mimatic mi » PolyMILL » TriMILL » TrioCut » PolyREAM

for Manufacturer	
Mazak	
for Machine Type	
QUICK TURN SMART 100 M/200M	
QTS	
100M 200M	
Dimensions	
Turret Type	Star-Type Turret
Shank	BMT Ø 68 mm
Drive	Tang
SW	12 mm
Modular Interfaces	
mimaticMi	



13

Order No.	Tool Holder	Clamping Range mm	Torque max.	n1/n2 (max.) (r.p.m.)	Gear Ratio	Coolant	L mm	L1 mm	L2 mm	L3 mm	L4 mm	S mm	T mm	Rotating direction
174675	ER 32	1,0-20	70 Nm	6.500 / 6.500	i = 1:1	external	117	80	37	69	86,0	80	85	↺ ↻
174676	ER 32*	1,0-20	70 Nm	6.500 / 6.500	i = 1:1	internal	117	80	37	69	86,0	80	85	↻ ↺
174902	mi 50	-	70 Nm	6.500 / 6.500	i = 1:1	internal	117	80	37	69	101,5	80	85	↺ ↻

* With clamping nuts with sealing, seals see page 530