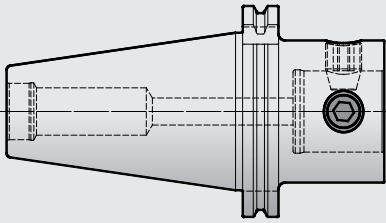
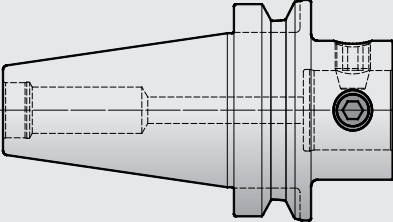


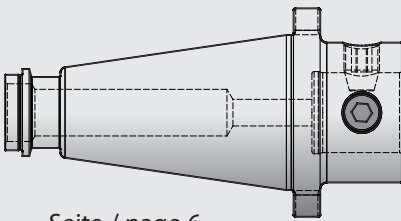
Seite / page 5



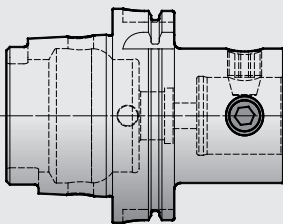
Seite / page 5



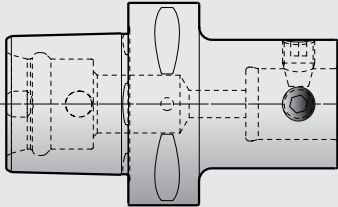
Seite / page 6



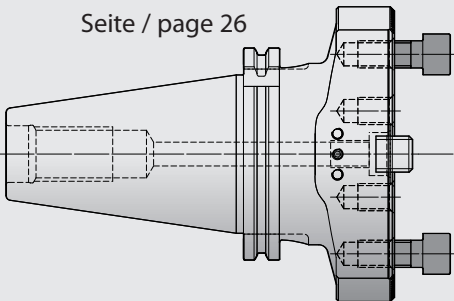
Seite / page 6



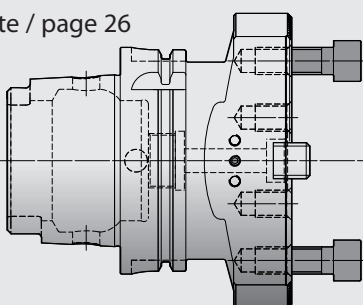
Seite / page 6



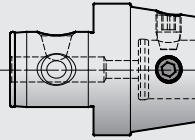
Seite / page 26



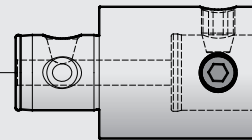
Seite / page 26



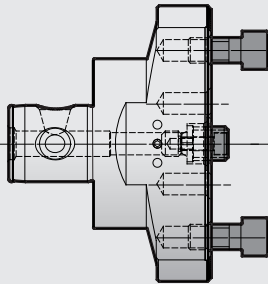
Seite / page 7



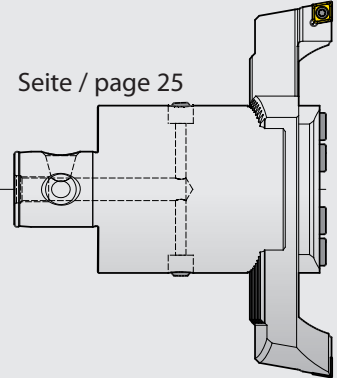
Seite / page 7



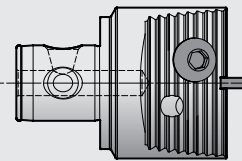
Seite / page 26



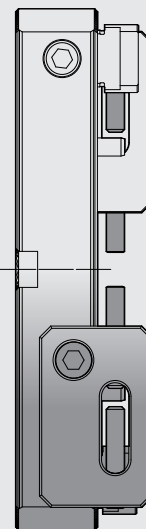
Seite / page 25



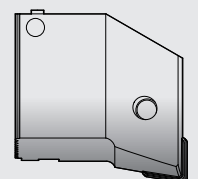
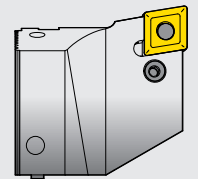
Seite / page 22



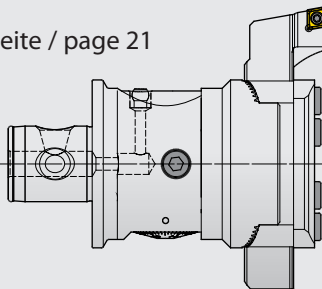
Seite / page 27



Seite / page 29



Seite / page 21



Seite / page 34+35

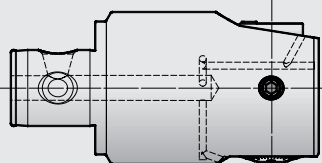
Seite / page 20



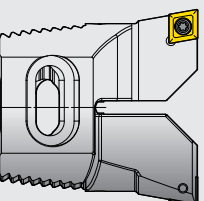
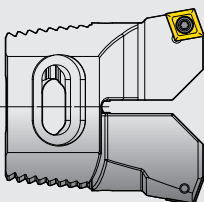
Seite / page 18



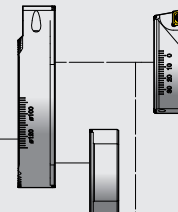
Seite / page 19



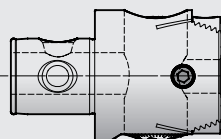
Seite / page 23+24



Seite / page 9



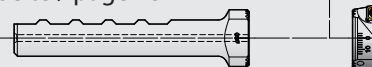
Seite / page 9



Seite / page 11



Seite / page 13



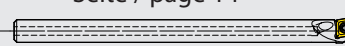
Seite / page 12



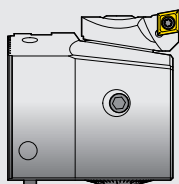
Seite / page 11



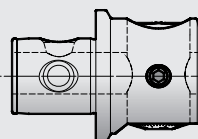
Seite / page 14



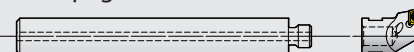
Seite / page 29



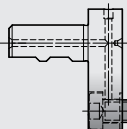
Seite / page 8



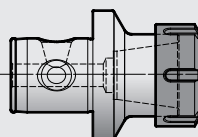
Seite / page 15



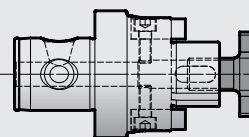
Seite / page 16



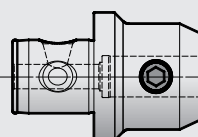
Seite / page 33



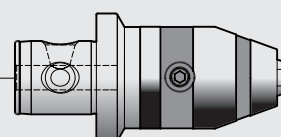
Seite / page 33



Seite / page 33



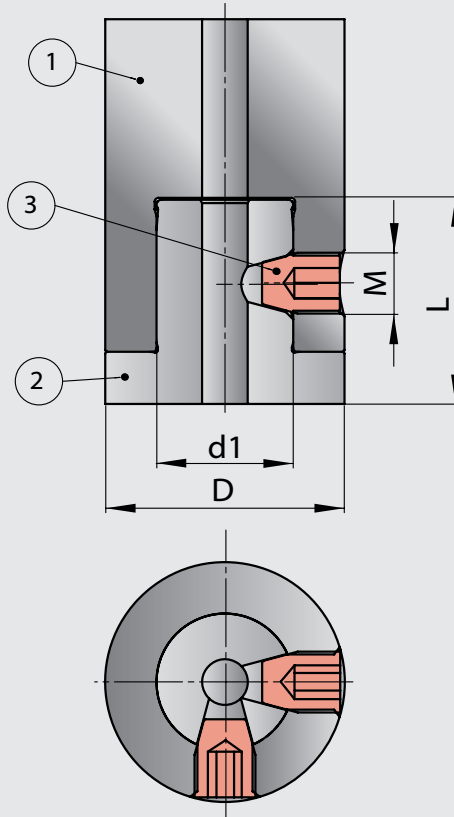
Seite / page 32



Spannsystem WH

Durch die seitlichen Spannschrauben (3) wird der Zapfen (2) in die Aufnahme (1) gezogen. Dank grosser Auflageflächen und hoher Vorspannung wird eine sehr grosse Steifigkeit erzielt.

Während die Dimensionen WH1 und WH2 jeweils nur eine Spannschraube aufweisen, kommen ab WH3 zwei um 90° versetzte Spannschrauben zum Einsatz.



quick-change coupling system WH

The male pilot (2) will be clamped into the female receptacle (1) by using radial clamping screws (3). A very high rigidity is achieved by a big contact surface and high prestress.

Meanwhile dimensions WH1 and WH2 are each containing just one clamping screw, WH3 and following dimensions are featuring two of these, shifted at 90°.

Dimensionen

Dimensions

③

WH	D	d1	L	M	Anzugsdrehmoment / Torque
WH1	20	11	13	M5x0.5	3.5Nm
WH2	25	14	18	M8x1	12Nm
WH3	32	18	22	M8x1	12Nm
WH4	40	22	28	M10x1	22Nm
WH5	50	28	28	M12x1	25Nm
WH6	63	36	40	M16x1.5	30Nm
WH8	80	36	40	M16x1.5	30Nm