



**APC BUILDING SERVICES (LONDON) LIMITED
UNIT 100 SCRUBS FARM
LOWER GRAVEL ROAD
BROMLEY
KENT
BR2 8LL**

CONTENTS

COMPANY DETAILS.....

CURRENT WORKLOAD.....

SKILLS & SERVICES AVAILABLE.....

ORGANISATION STRUCTURE.....

KEY MANAGEMENT.....

OPERATIVES AVAILABLE.....

ANNUAL TURNOVER AND PROJECTED FORECAST.....

CLIENTS.....

Full Name & Address

APC Building Services (London) Ltd
Unit 100 Scrubs Farm
Lower Gravel Road
Bromley
Kent
BR2 8LL

Contact Details

Telephone: 020 8462 2100
Facsimile: 020 8462 1605
E-mail: info@apcbuildingservices.co.uk
Website: www.apcbuildingservices.co.uk

Incorporate Details

Registered Office:

Blythe & Co
41 Oldfields Road
Sutton
Surrey
SM1 2NB

Bank Details:

Bank: The Royal Bank of Scotland
Branch: Bromley Branch
Account Name: APC Building Services (London) Ltd
Sorting Code: 16-14-29
Account Number: 10092455

Accountants Details:

Blythe & Co
41 Oldfields Road
Sutton
Surrey
SM1 2NB

Date of Incorporation:

15 April 2004

Company Number

05102580

VAT Number:

839 0388 03

Registered as a:

Private Practice

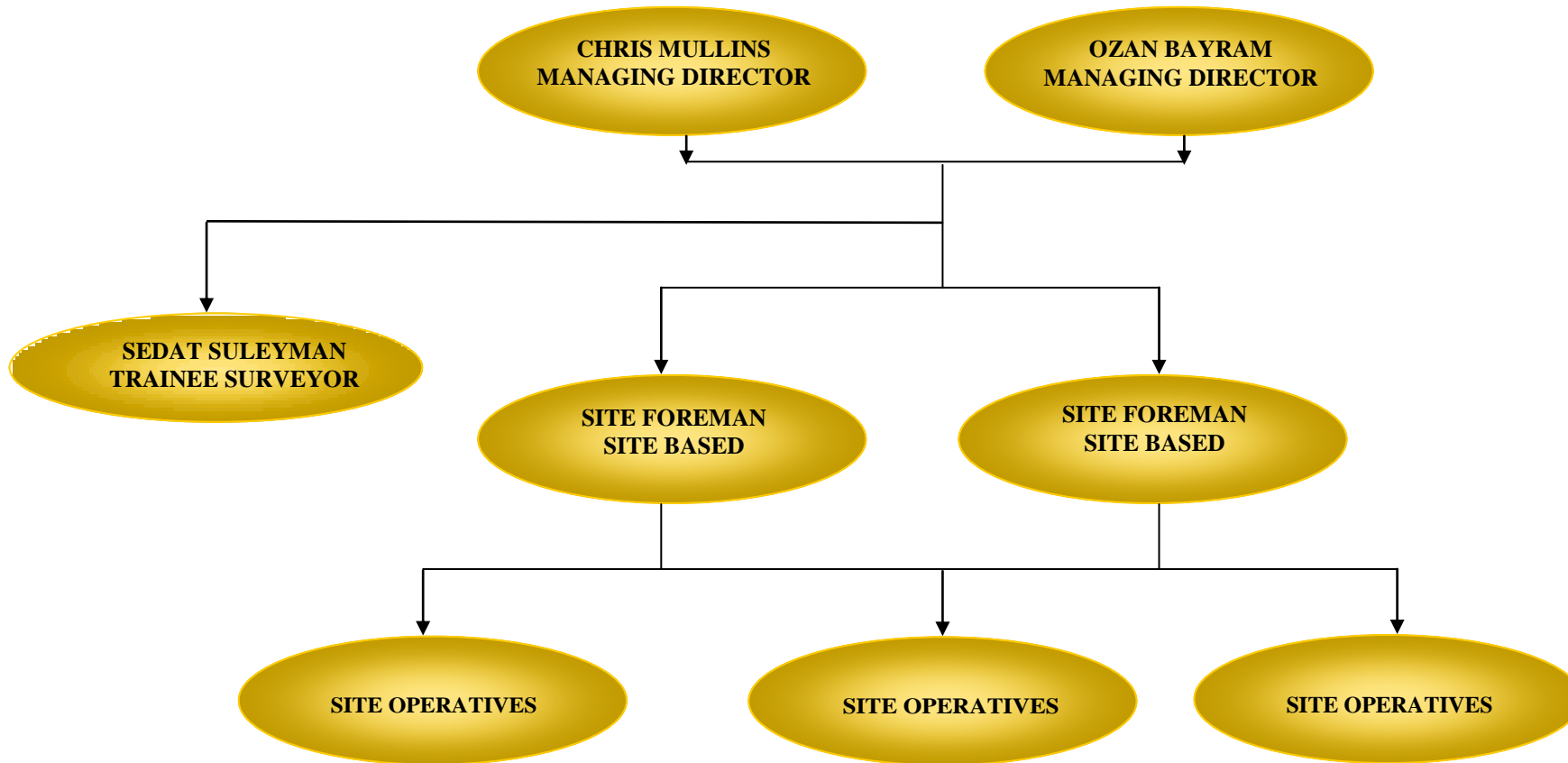
Area of Coverage

Our Head office is located at Unit 100 Scrubs Farm, Lower Gravel Road, Bromley, Kent. BR2 8LL We cover all areas within the M25 and also Kent and Surrey.

APC Building Services have been successfully trading since 2004. The core services in which are available are as listed.

- : Painting & Decorating
- : Air Conditioning/Ventilation System
- : Commercial Refurbishment/Remedial Works
- : Residential Refurbishment/Remedial Works
- : Timber Treatment
- : New Build - Residential
- : Planned Building Maintenance
- : Re-active Building Maintenance
- : Roofing & lead Work
- : Flooring & Tiling
- : Carpentry & Joinery
- : Plumbing & Electrical
- : Window Renewal & Glazing
- : Brickwork/Groundwork

Organisation Structure

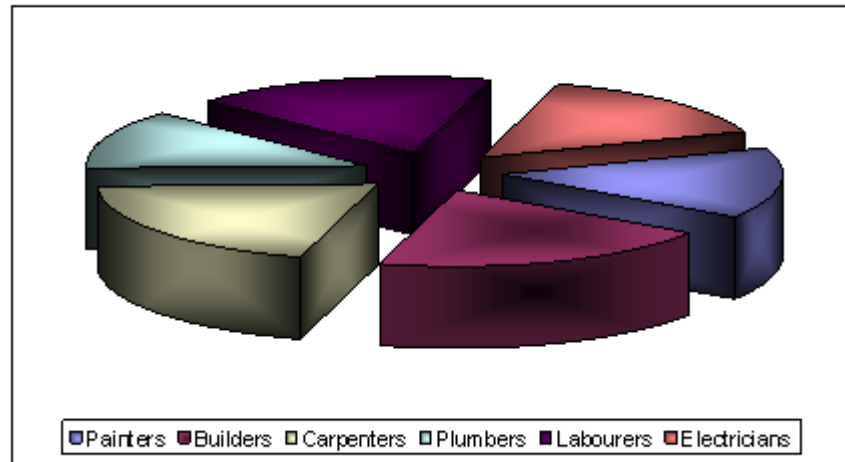


Key Management**Staffing Details**

Chris Mullins	-	Managing Director
Experience in Position	-	9 Years
Previous Experience	-	Building Industry Since School
Qualifications	-	HNC Construction
Specialist Areas	-	Court Services
	-	Housing Associations
	-	Local Authorities
	-	Major refurbishments
	-	Cyclical Decorations
	-	Bars/nightclubs/restaurant refurbishments
Ozan Bayram	-	Managing Director / Project Surveyor
Experience in Position	-	3 Years
Previous Experience	-	Building Surveying Consultancy 7 years
Qualifications	-	OND Construction
	-	HNC Construction
	-	BSc (Hons) Building Surveying
Specialist Areas	-	Housing Associations
	-	Local Authority
	-	Major refurbishment schemes
	-	Cyclical Decorations
	-	Conversion Works
	-	Prestigious Projects
	-	Bars/nightclubs/restaurant refurbishments

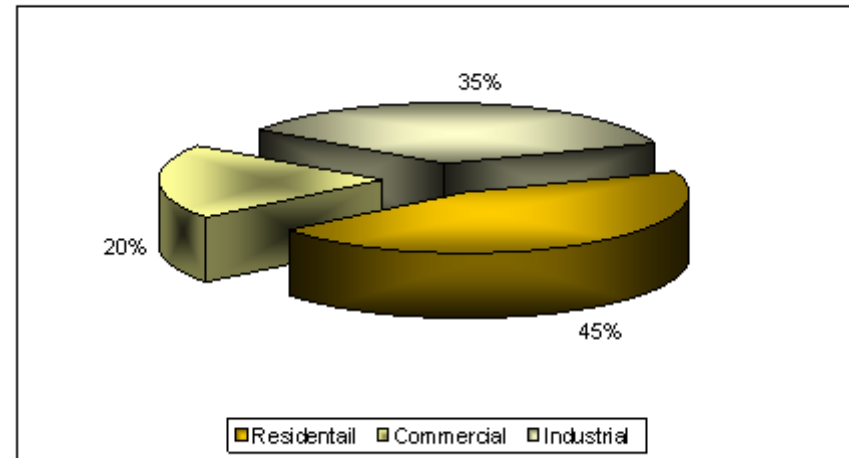
- Sedat Suleyman** - **Trainee Surveyor**
- Experience in Position - 2 Years
 - Previous Experience - Building Surveying
 - Qualifications - GCSE's
 - Specialist Areas - Cyclical Decorations
 - Prestigious Projects
 - Bars/nightclubs/restaurant refurbishments
-
- Yvonne Akerman** - **Accounts Department**
- Experience in Position - 40 Years
 - Previous Accounts - Since School

Operatives Available



Operatives	No.
Painters	6
Builders	8
Carpenters	8
Plumbers	5
Labourers	7
Electricians	6
Total	40

Industry Structure



Industry	%
Residential	45%
Commercial	20%
Industrial	35%
Total	100%

ANNUAL TURNOVER AND PROJECTED FORECAST

Quarter	Sales 2005	Sales 2006	Sales 2007	Sales 2008	Sales 2009
Dec / Feb 2005	£ 8,977.23				
Mar / May 2005	£ 81,880.71				
Jun / Aug 2005	£ 91,702.40				
Sep / Nov 2005	£ 87,178.39				
Dec / Feb 2006		£ 29,154.12			
Mar / May 2006		£ 48,058.76			
Jun / Aug 2006		£ 96,533.15			
Sep / Nov 2006		£ 109,634.89			
Dec / Feb 2007			£ 70,814.02		
Mar / May 2007			£ 130,188.65		
Jun / Aug 2007			£ 318,394.22		
Sep / Nov 2007			£ 335,736.66		
Dec / Feb 2008				£ 423,886.64	
Mar / May 2008				£ 319,778.55	
Jun / Aug 2008				£ 309,871.09	
Sep / Nov 2008				£ 421,960.32	
Dec / Feb 2009					£ 244,895.55
Mar / May 2009					£ 237,453.78
Jun / Aug 2009					£ 259,516.41
Sep / Nov 2009					£ 280,525.62
	£269,738.73	£ 283,380.92	£855,133.55	£ 1,475,496.60	£1,022,391.36

Clients

Acorn Estate Agents



Brockley Tenants Co-Op



Bromley Council



Chancery St James – Management

Delva Patman Associates



DTZ

Fairhurst Ward Abbott



Great Portland Estates

Hyde Housing Association

JONAP – John O'Neill & Partners



JONAP

John O'Neill & Partners Ltd

Kinney Green



Lewisham Homes



London Borough of Southwark



Martin Associates

Messila House Ltd

Project Building Consultancies



Saltash Enterprises Ltd

Private Clients and Developments

New Age Properties (London) Limited
Private development and conversion works



Mr Lakhani
Conversion Works and Refurbishment

Should you require further information please do not hesitate to contact us.

APC Building services (London) Ltd.
Unit 100 Scrubs Farm
Lower Gravel Road
Bromley
Kent
BR2 8LL
Telephone: 020 8462 2100
Facsimile: 020 8462 1605
E-mail info@apcbuildingservices.co.uk
Website: www.apcbuildingservices.co.uk

CURRENT WORKLOAD & DESCRIPTIONS

PARK CRESCENT & PORTLAND PLACE

Client: Great Portland Estates
Consultants: Delva Patman Associates
Contractors: APC Building Services (London) Limited
Contract Period: 8 Weeks
Contract Value: £180,000.00
Description: Cyclical Decorations



The Rising Sun, Woodford New Road

Client: Panna Mashru

Contractors: APC Building Services (London) Limited

Contract Period: 30 Weeks

Contract Value: £600,000.00

Description: Complete Refurbishment of a Night Club







Appendix

Contents

Insurance Details

Accredited members of

Construction Line

Exor Management

The Federation of Master Builders

Trustmark

The Contractors Health and Safety Assessment Scheme

Environmental Policy

Diversity Policy

Equal Opportunity Policy

Filed Accounts

31st March 2009