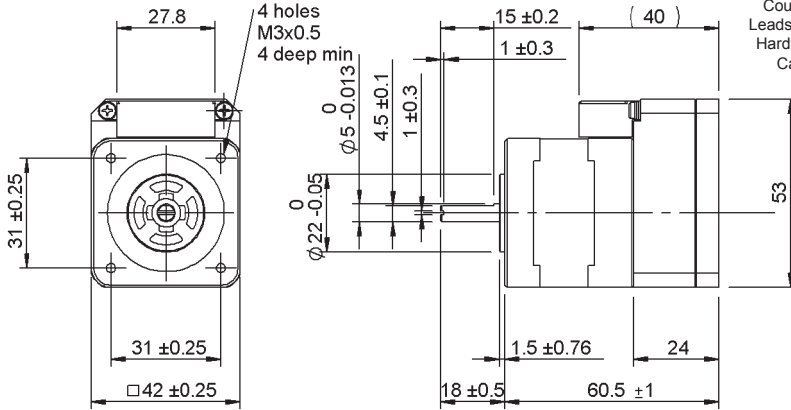




All dimensions in mm

Associated Products

- Planetary Gearboxes: page 3-3
- Couplings: page 8-1
- Leadscrews: page 7-1
- Hardware: page 13-1
- Cables: page 2-11



RCM1 - P - 17 S 30-C - RT3

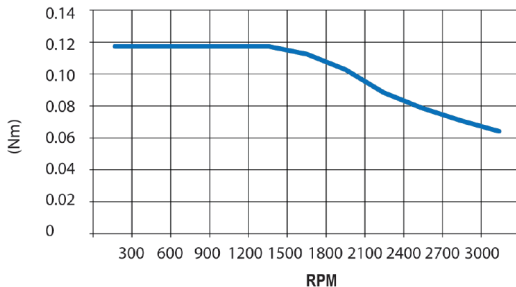
Generation
Interface P = Pulse
C = Computer
Speed 30 = 3000 rpm

Specification table

	RCM1- □ -17S30-C-RT3
Motor output power	18 W
Maximum speed	3,000 rpm
Continuous torque	0.082 Nm
Peak torque	0.117 Nm
Load inertia allowance	380 g-cm ²
Motor inertia	36 g-cm ²
Input supply current rated (Continuous torque/rated peak torque)	0.8 A/1.0 A
Weight	325 g

Torque curve

RCM1- □ -17S30-C-RT3



Technical support

- Product overview - see page 2-2
- Technical information - see page T2-1
- P & C interface - see page T2-2
- Software interface - see page T2-3
- Electrical interface - see page T2-5
- Cables - see page 2-11
- Accessories - see page 2-12