

YED

datair400

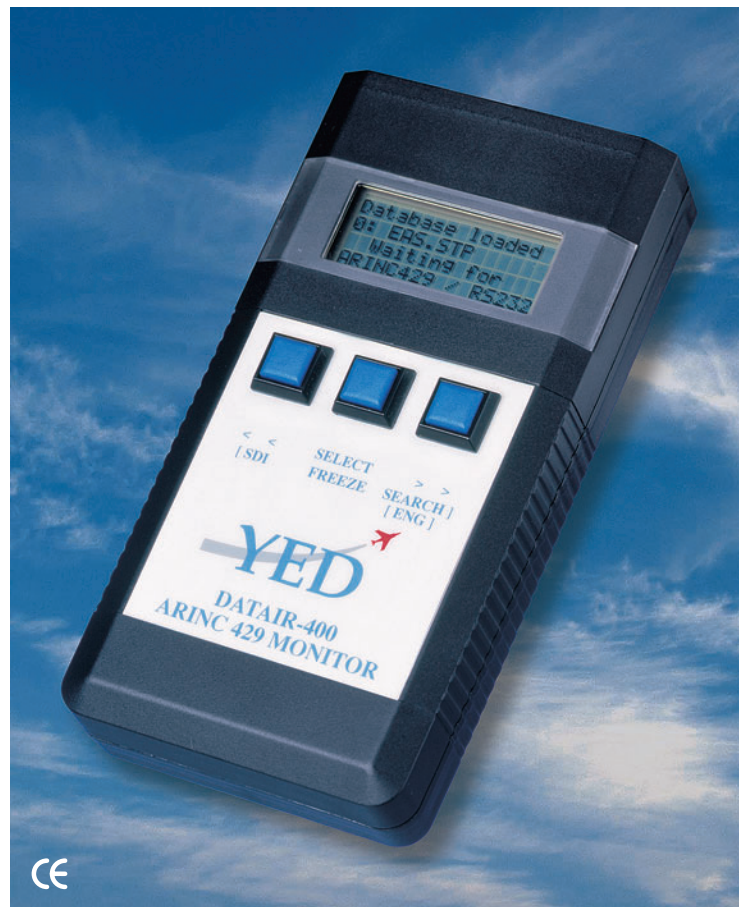
HAND HELD ARINC 429/575 DATABUS ANALYSER

The DATAIR-400 ARINC429 Data Monitor is an easy to use diagnostic tool. The DATAIR-400 connects to an ARINC429 data bus and instantly shows the active Labels (*Tags*) on the connected bus. The user interface is designed to be simple to use - the DATAIR-400 has just three buttons to navigate through the intuitive menu system.

The ARINC data word associated with a displayed Label may be viewed by simply positioning the cursor over the desired displayed Label and pressing the SELECT button. The display then shows the ARINC word in binary or hexadecimal format, the repetition rate of the word in milliseconds, the SSM value and the state of the Parity bit - **All in real time!** In addition to this, the monitor circuitry automatically adapts to the ARINC bit-rate and displays this as either "Hi" or "Lo". If a Label has an active SDI field, data with the desired Label/SDI combination can be viewed by scrolling through the SDI values. For fields that do not have an SDI, the filter can be set to "don't care" (=XX).

ARINC data is only displayed whilst it is active. If the selected data goes inactive for more than five seconds the display will be blanked. The Monitor is provided with a FREEZE button to freeze the last captured value for prolonged viewing if so desired.

The Monitor is packaged as a hand held unit. It is powered from 4 x AA batteries or from an external 6V DC supply.



```
104 Vert. Sed
110 Course #2
140 Roll
141 Pitch
```

```
L=141 29>0011000
00001100000000<9
Rate=0505mS P=0
SDI=XX SSM=00 Hi
```

```
L=141=060300Hex
Rate=0505mS P=0
SDI=XX SSM=00 Hi
```

```
L=141 Pitch
(F1): Pitch
+ 67.631840Deg
SDI=XX
```

datair400 product features

- ✔ Very user friendly and easy to use.
- ✔ Automatic bus search with bit rate detection.
- ✔ User definable engineering units format for up to 100 labels
- ✔ Binary and Hexadecimal display.
- ✔ Opto-couple isolation inputs.
- ✔ Simple intuitive user interface - 3 button menu driven, 4 line by 16 character LCD user display.
- ✔ Internal battery providing operation for up to five hours.
- ✔ External 6VDC (@200mA) operation.



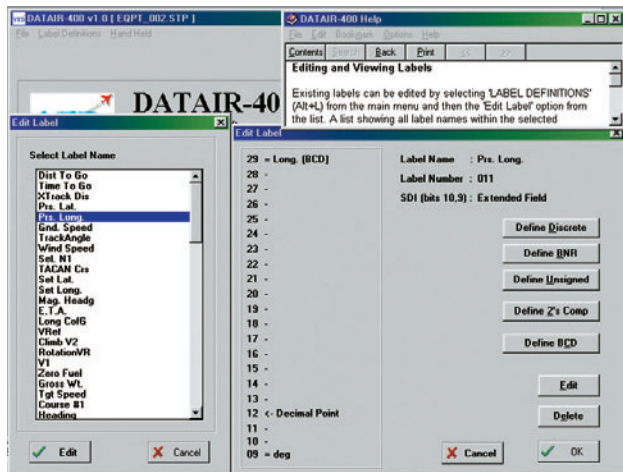
datair400

HAND HELD ARINC 429/575 DATABUS ANALYSER

Engineering units Word Definition Software

The DATAIR-400 unit can display engineering unit formatted data according to internally held data conversions. These conversions are defined using the Engineering Units Word Definition Software, and downloaded via an RS232 link to the DATAIR-400 unit.

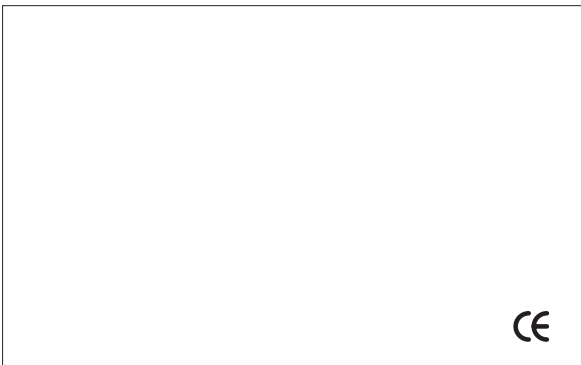
The conversions are defined by assigning a unique name for each ARINC Label and definitions for up to three fields within each Word. Each Field entry comprises of a Start position and Length, an MSB Value, the Conversion Format (*2's compliment, BCD, etc.*) and a Name for the Units. Up to one hundred ARINC words can be defined. All definitions can be stored to and retrieved from the hard disk.



The software operates on any Pentium PC running Microsoft Windows™95/98/NT4/W2k/XP.

datair400 technical specification

bit rate	Lo Speed 8 to 14 kbps Hi Speed 90 to 110 kbps
voltage levels (line A to B)	HI 10 ± 6 Vdc NULL 0 ± 2.5 Vdc LO 10 ± 6 Vdc
input impedance	3 kΩ minimum (balance)
product dimensions (mm)	195L x 100W x 42D
weight	600 grams
user interface	4 line x 16 character LCD 3 push button menu selection
power requirements	External DC 3 to 7 VDC @ 100mA Batteries 4x MN1500 or AA size Battery Lifetime Up to 6 hours
Operating Environment	Temperature +0°C to 50°C Humidity Range 0% to 95% non-condensing



The information contained in this brochure is subject to change without notice. YED shall not be liable for errors or omissions contained herein.