



JD (UK) Ltd

> Catalogue Deprat tubes & components



JD UK Ltd Distributors of

DEPRAT
SYSTÈMES DE PROGRÈS



Distributed by JD (UK) Ltd - www.jdukLtd.co.uk info@jdukLtd.co.uk 01924 472924

In 1929 Jean Deprat created a small factory making hinges for wooden roller shutter in the town of Leers, near Lille in France.

We are now into the 21st century and Deprat has become one of the most reputable suppliers to roller shutter manufacturers in Europe.

In all those years they have steadfastly remained loyal to their profession and roots as a supplier to the roller shutter industry.

The company, which is still family-owned, has nevertheless developed and changed over the year by adapting to new technical challenges in the market place yet still giving a first class service to customers.

In recent years Deprat has built up strong relationships with many UK roller shutter manufacturer who will all readily acknowledge that using Deprat components has revolutionised the way in which they work.

Having supplied UK customers direct from France for many years, Deprat has taken the next logical step and established a UK distribution and service

centre, which is still backed up by their full research and facilities in France and complemented by a UK – based technical advice, support and sales service.

JD UK LTD moved to new larger premises (16,000 squ ft) in June 2011 and now holds vastly greater stocks of Deprat and Alutech products, including all foam filled and extruded profiles to make roller shutters & grilles. All components and parts for spring roller tubes, in fact so many parts we have a separate catalogue with over 3000 items, many available from stock. Please ask for our other catalogues or look on line.

www.jdukLtd.co.uk

We also offer Alutech Sectional doors for domestic and industrial applications.



JD (UK) Ltd is member of :



Index

89mm systems

Page 3 - 14

- A. 89mm Motorised Barrel
 - Garage door locking system for 89mm tube
 - 89mm motorised barrel with compensation system
- B. 89mm Spring Barrel
 - Components for spring compensation
- C. Deflection chart 89mm Tube

62mm systems

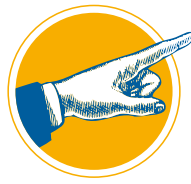
Page 15 - 24

- A. 62mm Motorised Barrel
 - 62 mm motorised barrel with compensation system
- B. 62mm Spring Barrel
- C. Deflection chart 62 mm Tube

Others components

Page 25 - 43

- A. Attachments
 - Simple attachment
 - DVA
- B. Components for compensation and pull-up
- C. Additional components
 - Low level manual override kit for garage door



THINGS YOU SHOULD KNOW ABOUT THE DEPRAT 89 Tube

Efficient

- Can carry 150kg at 3m wide with only 10mm tube deflection.
- Can carry 50kg at 4.5m wide, ideal for 77mm lath garage doors.
- Tube available in 6m or 7m lengths and can be bought individually.
- Fully galvanised, high corrosion resistance even in coastal regions.
- No degreasing of tubes or painting required and waiting to dry.

Equipment

- Sprung barrels can have several springs, width is only restriction.
- 12 different standard spring sizes available all RH wound.
- Special lifting and locking systems for extruded, foam filled and 3» steel laths.
- Telescopic dummy ends for either normal or 18mm brake options.
- Motors and adaptors available from all leading motor manufacturers.

Simple to use

- After cutting the tube only an allen key and screwdriver are required.
- No drilling or welding of studs for curtain attachments to the tubes
- No welding of dummy ends, push fit into keyed tube and one rivet needed.
- Skilled welders not required for assembly/fabrication.

Time saving

- Huge saving in time and cost of labour for assembly of all types of barrels.
- Minimum of 90 motorised barrels can be assembled by one man in 8 hours.
- It takes only 10 minutes to cut and assemble a spring barrel to completion.

Competitive

Spring barrel assembly

	4"16g Shutter barrel	89 Deprat tube
average time taken	60 min	10 min

6 TIMES
FASTER

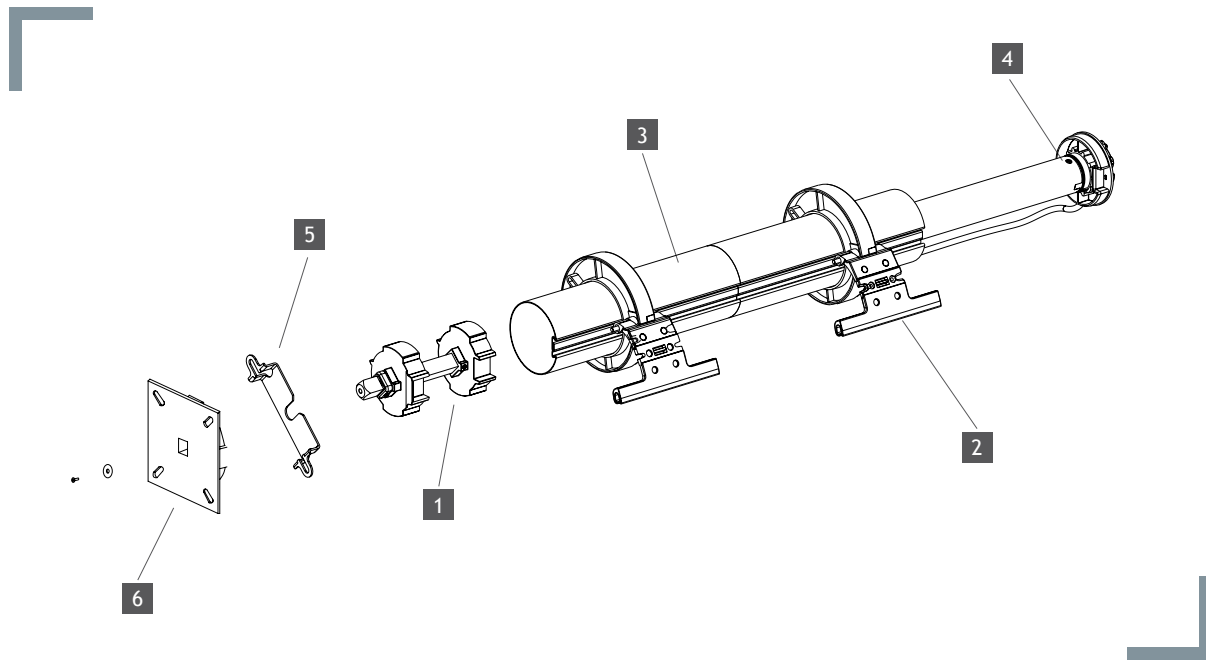
Motorised barrel assembly

	4"16g Shutter barrel	89 Deprat tube
average time taken	27 min	5 min

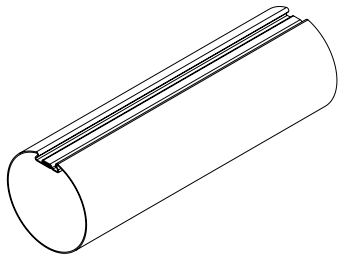
6 TIMES
FASTER

**MORE COST EFFECTIVE THAN ANY OTHER STEEL ROLLER
ON THE MARKET, AND GALVANISED TOO.**

A. 89mm Motorised Barrel



Number (on the drawing)	Description	Reference	Number (per barrel)
1	Telescopic dummy end	2036-89-250	1
2	Garage door attachment		See page 6
3	89mm tube 6 and 7 meter length	F5039-6/G00	1
4	Motor	NM/PP/50/89	1
5	Bride for safety brake	DE1EM002 or DE1EM001	1
6	Safety brake	SB-JD18	1



Description

89mm tube

Available in 6 and 7 meters length
Galvanized steel

Reference

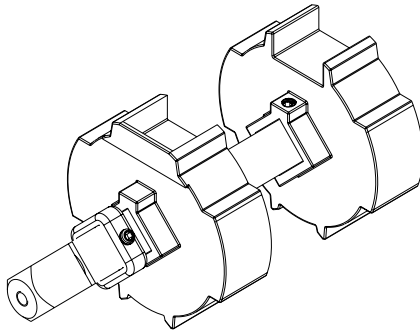
F5039-6/G00
F5039/G00

Packing

6 m
7 m

No

3



Description

Telescopic dummy end for use with safety brake

18mm square drive

Three shaft length: 250mm, 600mm and 1200mm
Square shaft: galvanized steel, wheels: aluminium alloy

Reference

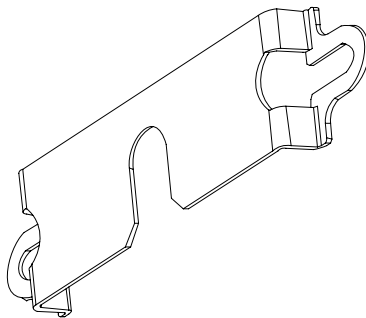
2036-89-250
2036-89-600
2036-89-1200 (to special order)

Packing

1
1
1

No

1



Description

Bride for safety brake

To be used with 18mm square shaft telescopic dummy end to prevent accidental withdrawal
Zinc coated steel

Reference

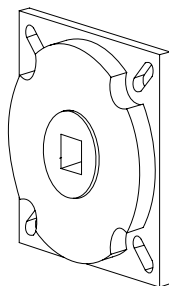
DE1EM002 (for GAPOSA and TIMER safety brakes)
DE1EM0021 (TELECO safety brake)

Packing

1
1

No

5



Description

Safety Brake

100 mm square plate mounting with 13 mm square drive or 18 mm square drive

Reference

SB-JD13 (for 13 mm shaft)
SB-JD18 (for 18 mm shaft)

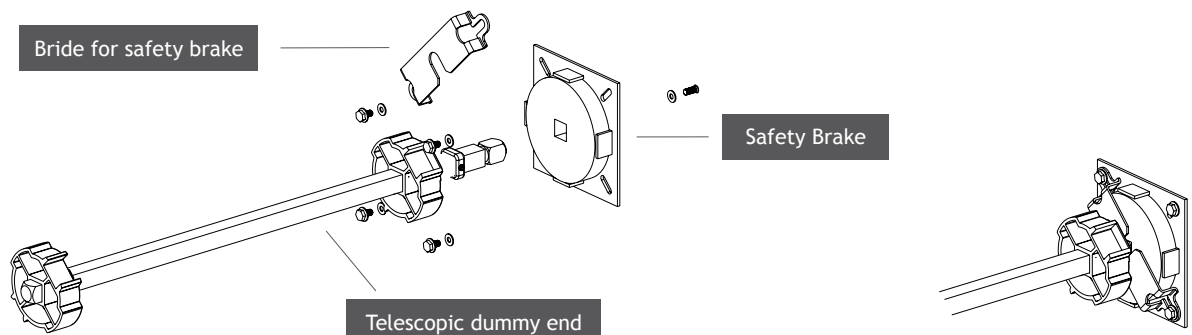
Packing

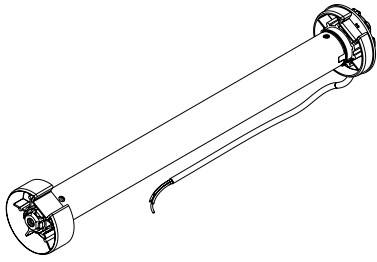
1
1

No

6

Safety Brake and Telescopic dummy end

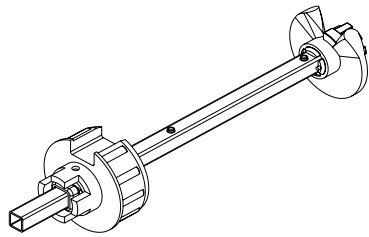




Description

50 Nm motor with manual override
 Complete with 100mm sq mounting plate and 7mm hex override drive shaft & eye and adaptor to suit 89mm Deprat Tube

Reference	Packing	No
NM/PP/50/89	1	
ZADL/89 (89mm tube motor adaptors for Euro/AN motors)	1	4



Description

Alternative telescopic dummy end if no safety brake
 16 mm square shaft
 Zinc coated steel & polyamide

Reference	Packing	No
2029	1	-

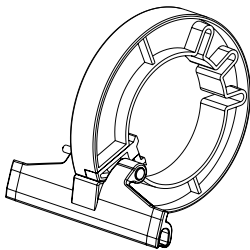
Garage door and grille locking system for 89mm tube

Locking system for 89mm tube

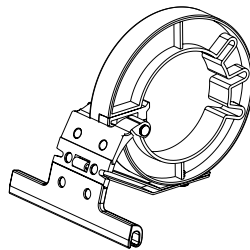
Made for 77mm laths and grilles
 Faster winding
 Easy and quick setting on the tube
 Each ring has a 30 kg lifting capacity
 several segments available for the 77mm laths
 3 locking for a 2m wide shutter. 1 locking per extra metre
 Ring: Acetal Resin; attachment: Pa6, 50% glassfiber

Reference	Description	Packing
D106	89mm locking ring system for 77mm laths	1
RV0TP003	89mm locking pin system	1
D27	89mm locking ring attachment	1
D27-1	89mm locking ring attachment - 1 segment	1
D27-2	89mm locking ring attachment - 2 segments	1
D103	Tape	1
BL0TRL001	Screw for Tape	1
D30-100	Aluminium attachment for use with 3" steel curly lath. Gives tighter roll into shutter boxes and locks the shutter.	1

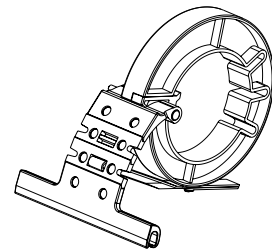
6



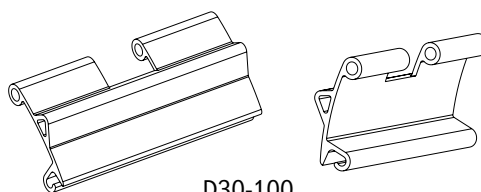
D106 ring with D27 attachment



D106 ring with D27-1 attachment

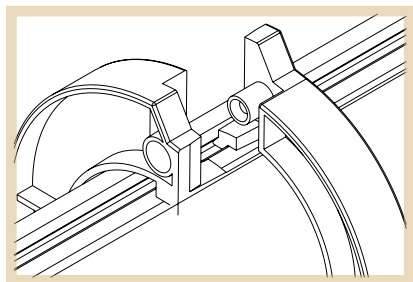


D106 ring with D27-2 attachment

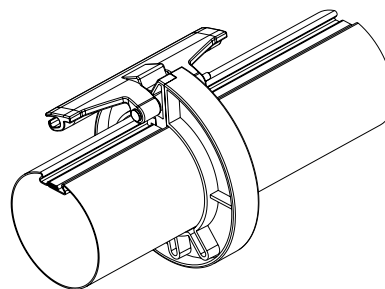


D30-100

Attaching the D106 onto 89mm tube

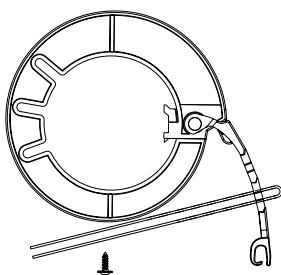


Open the ring and roll it around the tube.
Set the spigot into the keyway of the tube
Close the ring

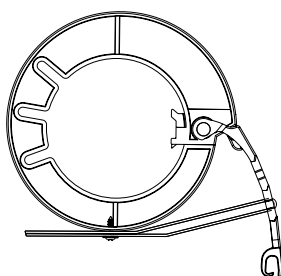


Place the selected attachment on the ring
Insert the pin through the attachment to secure to the ring.

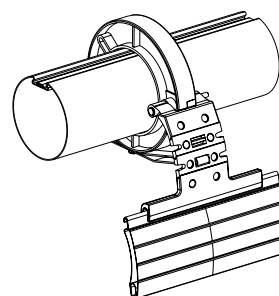
Tape setting for D27-1 and D27-2 attachments



1 - With the shutter in the lower position, place the tape, D103, on the last segment, as indicated on the diagram.



2 - Pull on the tape and screw the BLOTRL001 as indicated on the diagram.

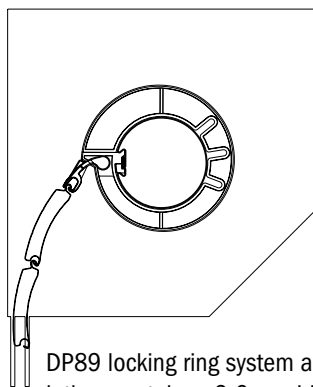


The locking ring is set !

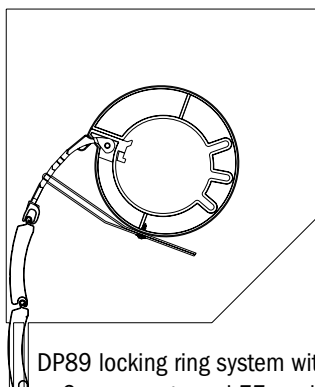


WARNING:

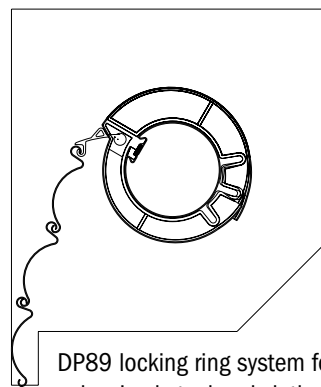
If attachments D27-1 and D27-2 are not set with tape and screw, they will be not considered as locking devices, but as regular attachments. Performance of products will be dramatically affected.



DP89 locking ring system and 77mm laths, can take a 2.6m guide height using this system.



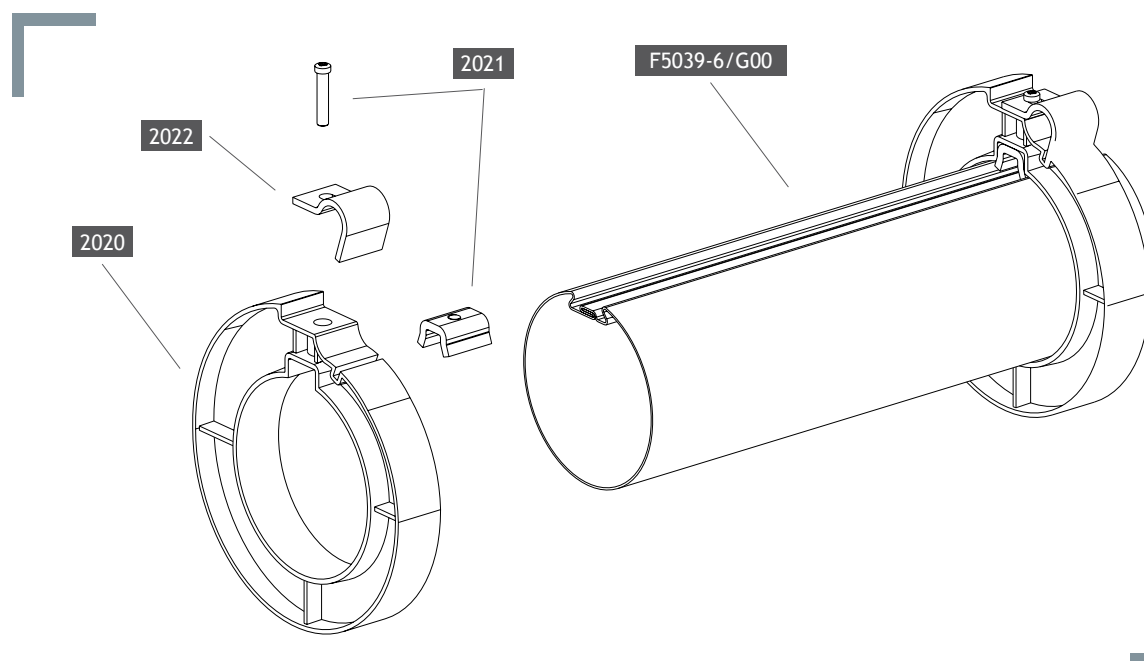
DP89 locking ring system with 1 or 2 segments and 77mm laths.



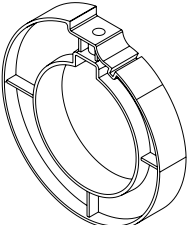
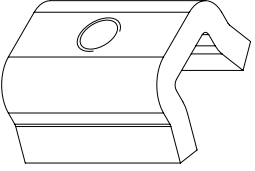
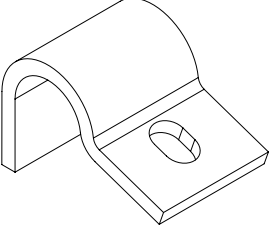
DP89 locking ring system for grilles for 3" galvanised steel curly lath. Improves rolling characteristics and reduces the egg effect.

A. 89mm Motorised Barrel

Components for tube and link & nylon link grilles.
Also used for wooden shutters

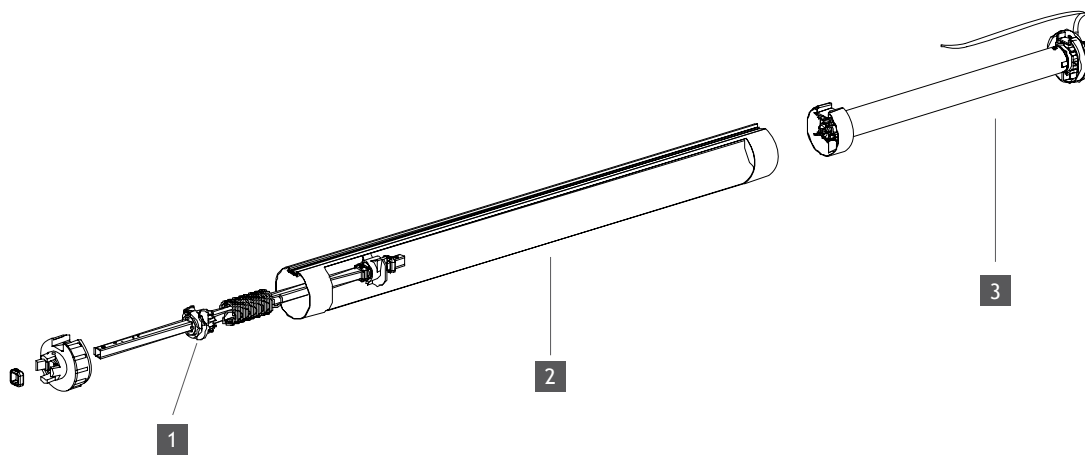


8

	Description		
Excentric Ring for 89mm tube Fast winding Polyamide			
Reference		Packing	
2020		1	
	Description		
Brackets for 89 mm tubes Zinc coated steel			
Reference		Packing	
2021/Z00		1	
	Description		
«P» clip used with grilles Galvanized steel			
Reference		Packing	
2022/Z00		1	

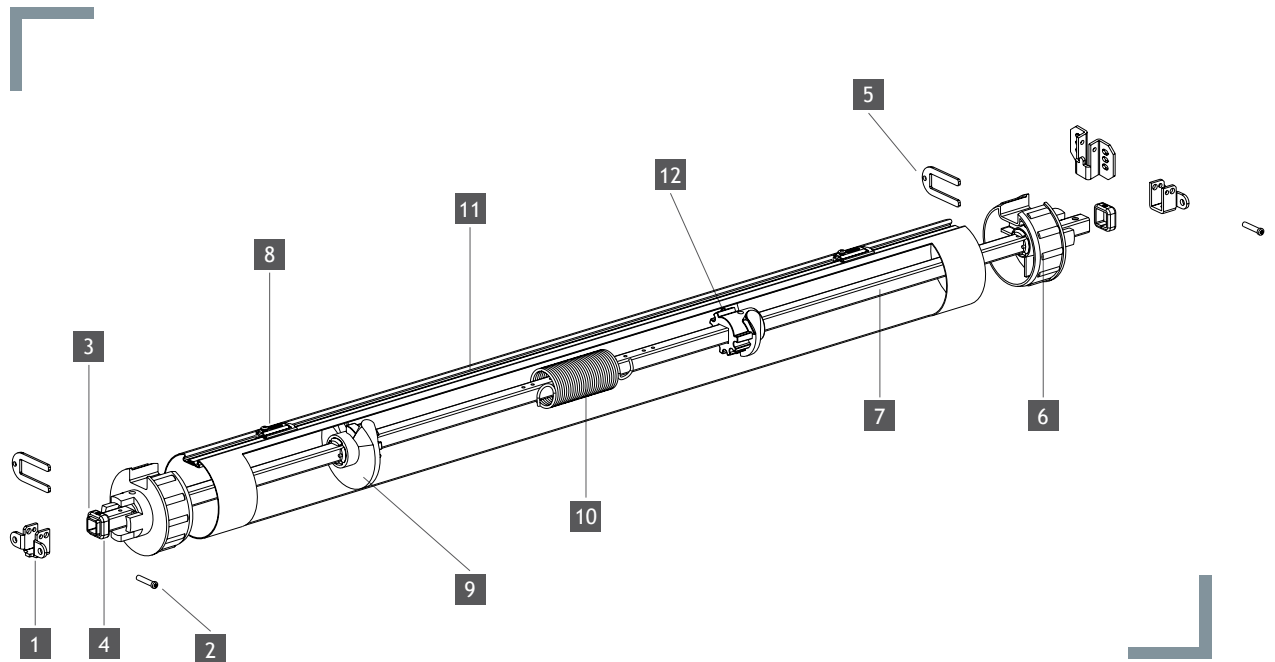
A. 89mm Motorised Barrel

With compensation system



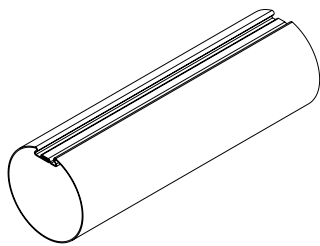
Number (on the drawing)	Description	Reference	Number (per barrel)
1	Spring compensation	(see page 29 for components)	1
2	89mm tube	F5039-6/G00	1
3	Motor	NM/PP/50/89	1

B. 89mm Spring Barrel

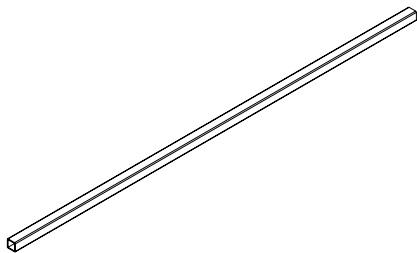


10

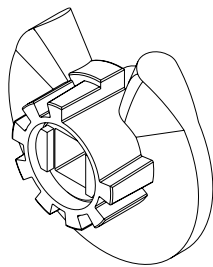
Number (on the drawing)	Description	Reference	Number (per barrel)
1	Standard shoe or heavy duty shoe	2006/G00 or 2032-AT0/G00	2
2	Screw for shoe	BL0TC008	2
3	Locking ring	2018/Z00	2
4	Grub screw for 2018/Z00	DE1DI007	2
5	Locking fork	2008-BF	2
6	End block	2003-892	2
7	16mm square shaft	F16-15	2
8	Curtain attachment	2021/Z00	3/m
9	Rotating attachment	2004-892	1
10	Spring	R30-285 to R64-870	1
11	Tube Galv Steel	F5039-6/G00	1
12	Fixed attachment	2005-892	1



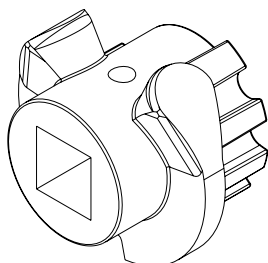
Description		
89mm tube Available in 6 and 7 meters length Galvanized steel		
Reference	Packing	No
F5039-6/G00	6 m	11
F5039/G00	7 m	



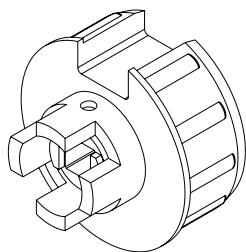
Description		
16mm square shaft For spring barrel Steel		
Reference	Packing	No
F16-15	6,1m	7



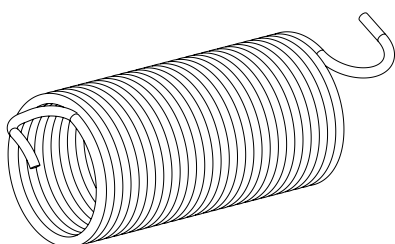
Description		
Rotating attachment For spring barrel with 16mm square shaft (F16-15) Acetal resin and polyamide		
Reference	Packing	No
2004-892	1	9



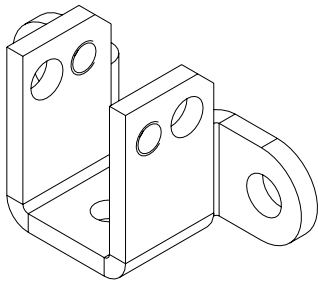
Description		
Fixed attachment For spring barrel with 16mm square shaft (F16-15) Acetal resin and polyamide		
Reference	Packing	No
2005-892	1	12



Description		
End block For spring barrel with 16mm square shaft (F16-15) Acetal resin and polyamide		
Reference	Packing	No
2003-892	1	6



Description		
Spring Spring choice can be found page 30 Carbon alloy steel		
Reference	Packing	No
R30-285 to R64-870	1	10

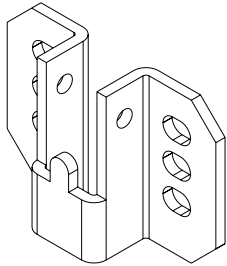


Description

Standard Shoe + Screw BLOT008

To be used with 16mm square shaft (F16-15)
Galvanized steel

Reference	Packing	No
2006/G00	1	1 + 2
BLOT008	1	

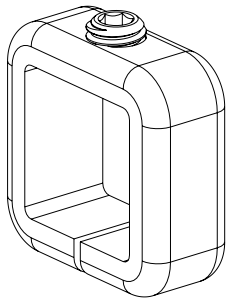


Description

Alternative heavy duty shoe + screw & nut

To be used with 16mm square shaft (F16-15)
Galvanized steel

Reference	Packing	No
2032-ATO/G00	1	-
BLOT008	1	

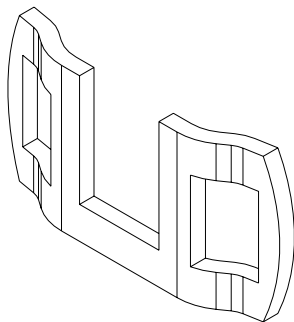


Description

Locking ring + grub Screw DE1D1007

To be used with 16mm square shaft (F16-15)
Zinc coated steel

Reference	Packing	No
2018/Z00	1	3 + 4
DE1D1007	1	

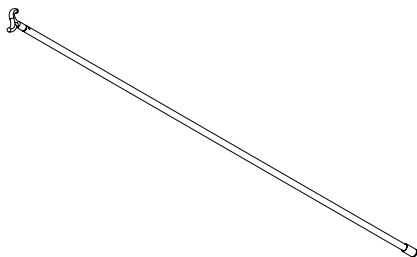


Description

Locking fork

2008 & 2008-BF : Steel
2008-B/G00: Galvanized steel

Reference	Packing	No
2008	1	5
2008-BF	1	
2008-B/G00	1	



Description

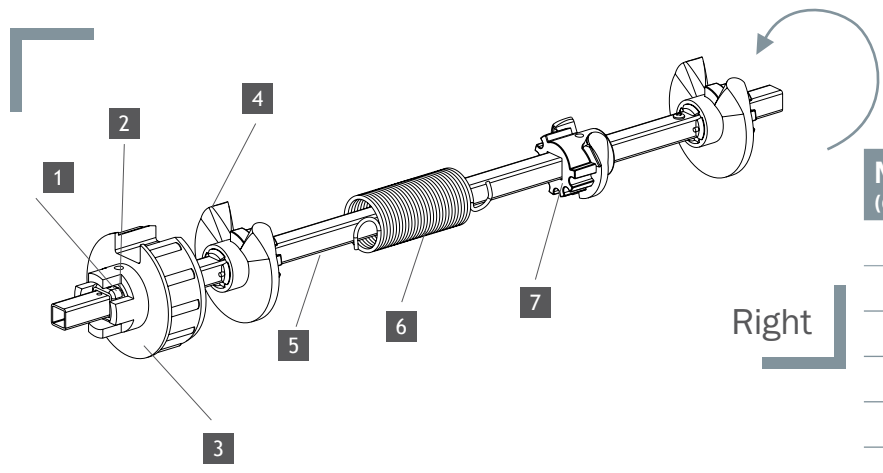
Pull down pole with hook 1m long

For use with spring barrel system
Steel, polyamide and vinyl

Reference	Packing	No
D95-10	1	-

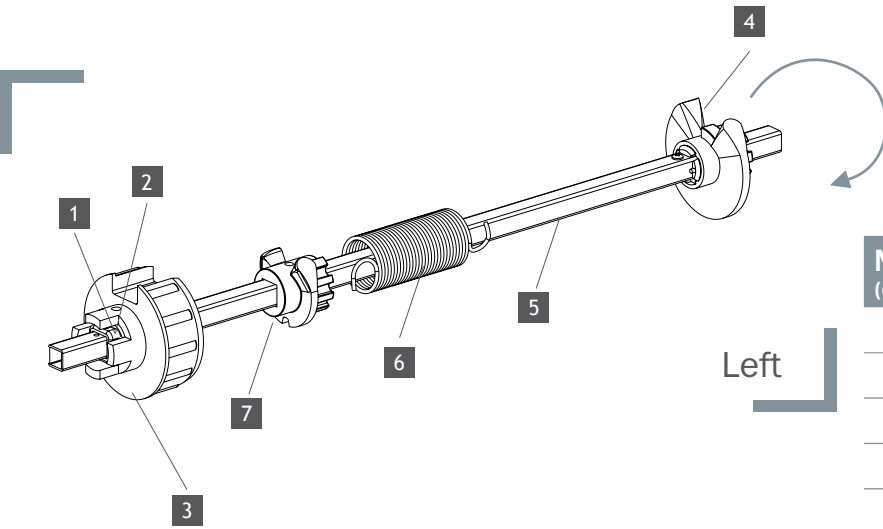
B. 89mm Spring Barrel

Components for spring compensation for 89mm and 70 octagonal



Turn curtain in direction of arrow to tension spring.

Number (on the drawing)	Reference		Number (per barrel)
	DP89	70oct	
1	2018/Z00		3
2	DE1DI007		3
3	2003-892	2017	1
4	2004-892	2114	2
5	F16-15		1
6	Spring		1
7	2005-892		1



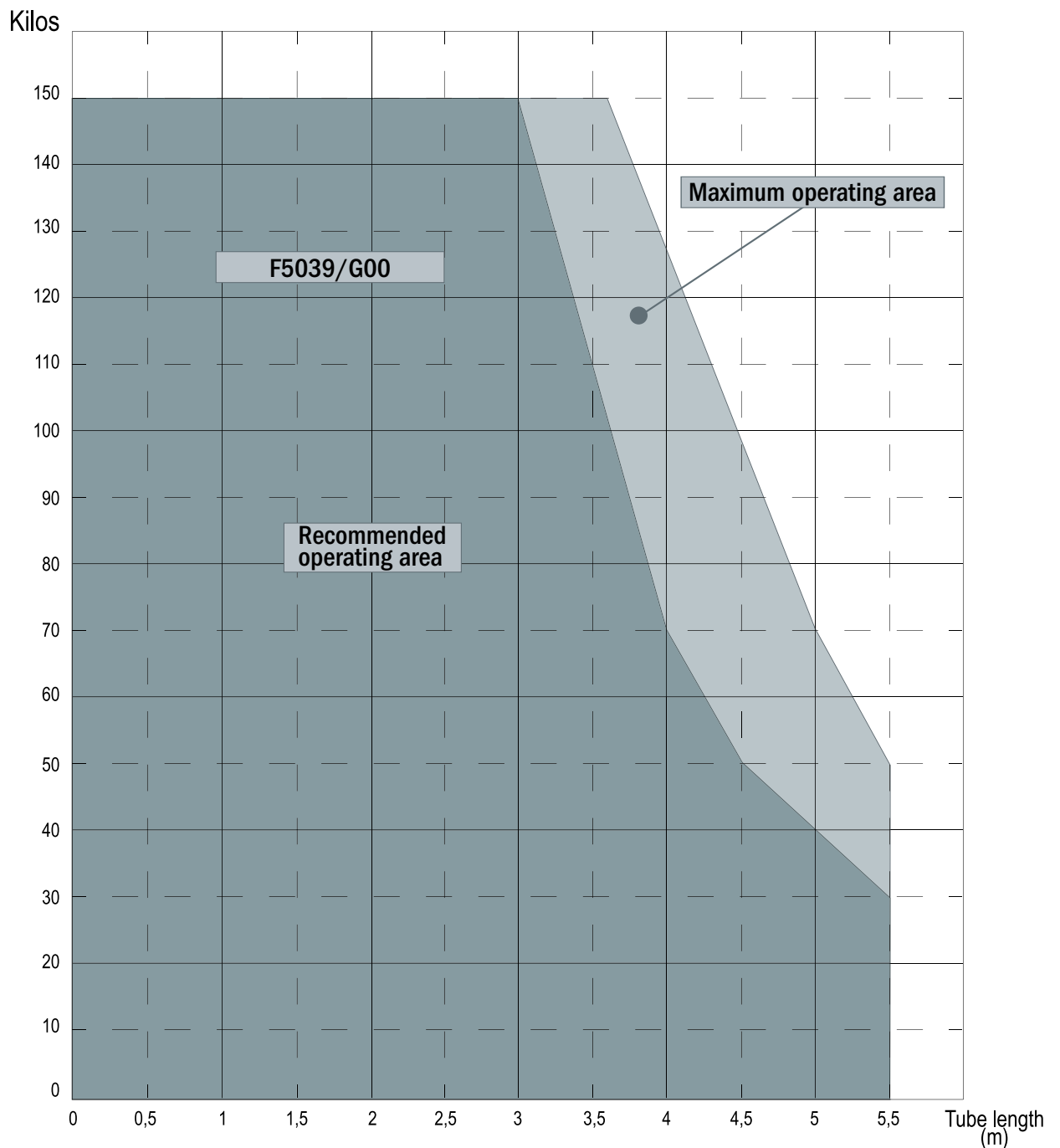
Turn curtain in direction of arrow to tension spring.

Number (on the drawing)	Reference		Number (per barrel)
	DP89	70oct	
1	2018/Z00		3
2	DE1DI007		3
3	2003-892	2017	1
4	2004-892	2114	1
5	F16-15		1
6	Spring		1
7	2005-892		1

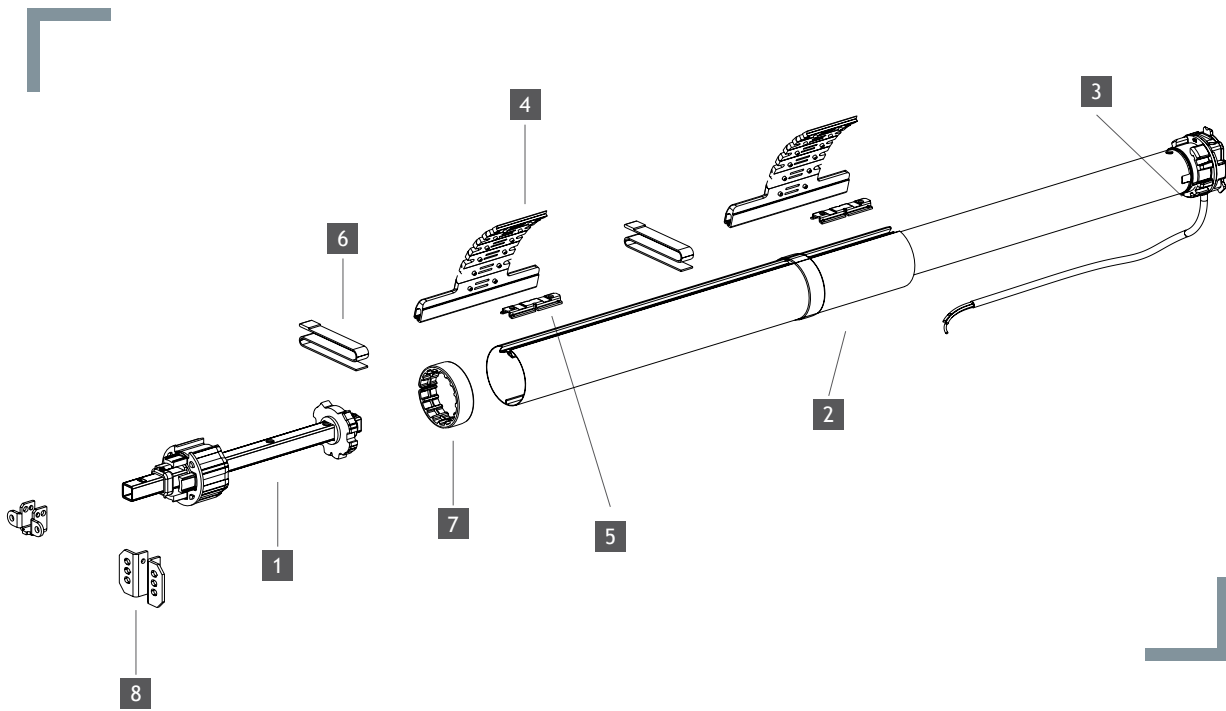
C. Deflection chart 89mm Tube

Range Chart

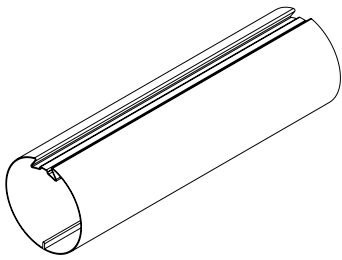
Recommended deflection : 10mm
Maximum deflection accepted : 20mm



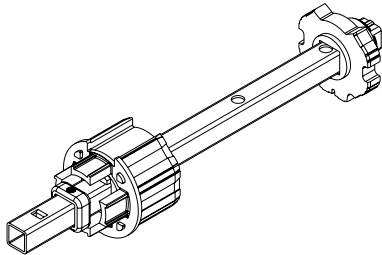
A. 62mm Motorised Barrel



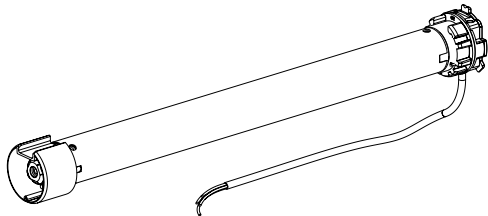
Number (on the drawing)	Description	Reference	Number (per barrel)
1	Telescopic dummy end	2028	1
2	62mm tube	F2000/G00	1
3	Motor		1
4	DVA	D115-1 or other	See fitting instruction - page 27
5	Bracket	D101/G00	1/DVA
6	Tape	D103	1/DVA
7	Ring	D102-62	
8	Shoe	2006/G00 or 2032-ATO/G00	1



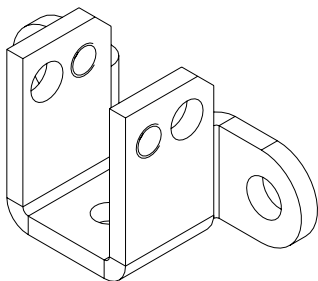
Description		
62mm tube Galvanized steel		
Reference	Packing	No
F2000/G00	6 m	2



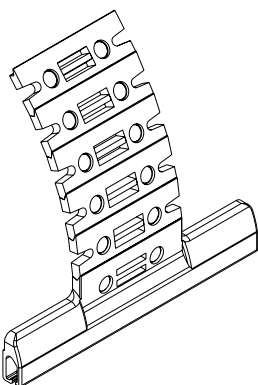
Description		
Telescopic dummy end 16 mm square shaft Fits both 62 Deprat tube and 60 octagonal tube Zinc coated steel & polyamide		
Reference	Packing	No
2028	1	-



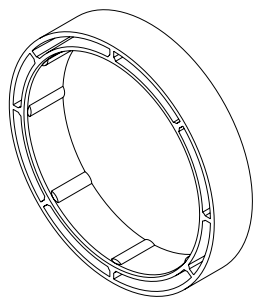
Description		
Motor		
Reference	Packing	No
	1	3



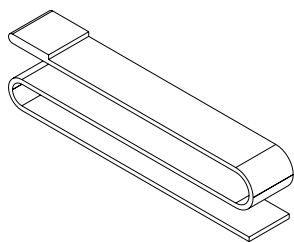
Description		
Shoe + Screw BL0TC008 To be used with 16mm square shaft (F16-15) Galvanized steel		
Reference	Packing	No
2006/G00	1	8
BL0TC008	1	
2032-ATO/G00 (heavy duty shoe)	1	



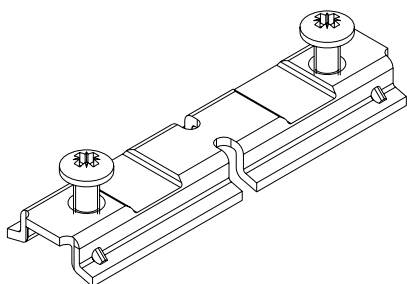
DVA: Automatic Locking System			
The most efficient locking device Resist to a lifting force up to 150kg To be use with gearbox or motor Suitable on all our tube It can be adapted to suite most of the lath of the maket form 37mm to 77mm Glass fibre reinforced polyamide and inox Number of elements must be chosen according to the curtain diameter			
Reference	Description	Packing	No
D115-1	DVA 5 elements for mini lath	1	4
D117-1	DVA 7 elements for mini lath	1	
D120-1	DVA 10 elements for mini lath	1	
D105-1	DVA 5 elements for thick lath	1	
D107-1	DVA 7 elements for thick lath	1	
D110-1	DVA 10 elements for thick lath	1	



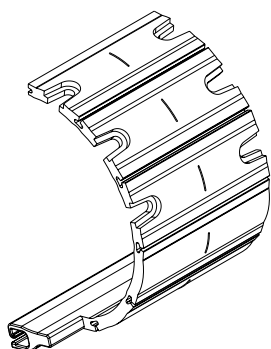
Description		
Ring for 89 and 62 tubes Polypropilene		
Reference	Packing	No
D102-62 (for 62 tube, exterior diameter 72mm)	1	7
D102-89 (for 89 tube, exterior diameter 99mm)	1	



Description		
Tape Polypropilene		
Reference	Packing	No
D103	1	6



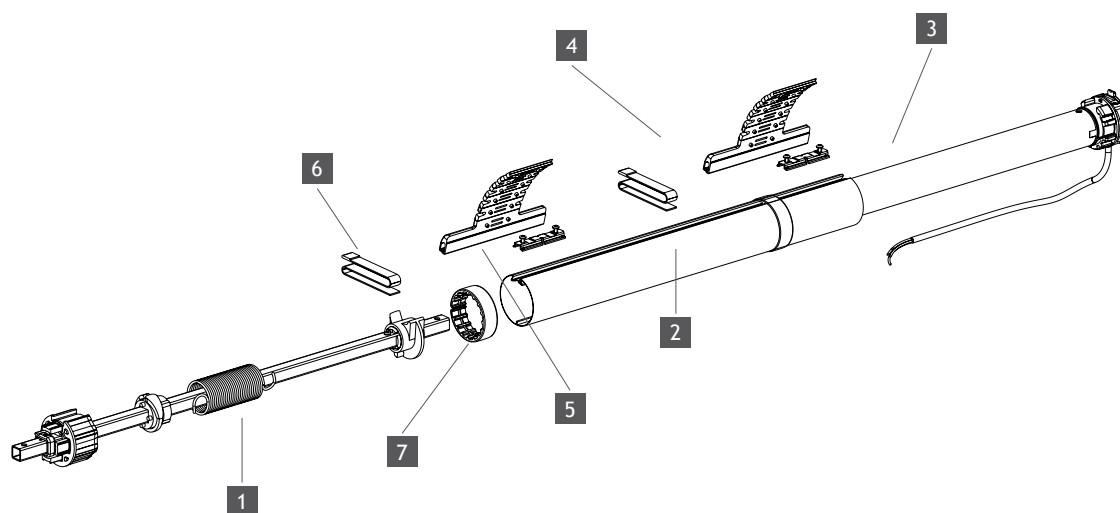
Description		
Fixing brackets for 62 and 89 mm tubes Link the attachment to the tube Fits DVA and ATR attachments Galvanized steel		
Reference	Packing	No
D101/G00 (for 62mm tube)	1	5
D101-89/G00 (for 89mm tube)	1	



ATR: Rigid Attachment		
Limit switch: For gearbox or motor without limit To be use with our different tubes It can be adapted to suite most on the lath of the market from 37mm to 77mm Polypropylene Number of elements must be chosen according to the curtain diameter		
Reference	Description	Packing
D1804-M	ATR 4 elements for mini lath	1
D1805-M	ATR 5 elements for mini lath	1
D1806-M	ATR 6 elements for mini lath	1
D1804	ATR 4 elements for thick lath	1
D1805	ATR 5 elements for thick lath	1
D1806	ATR 6 elements for thick lath	1

A. 62mm Motorised Barrel

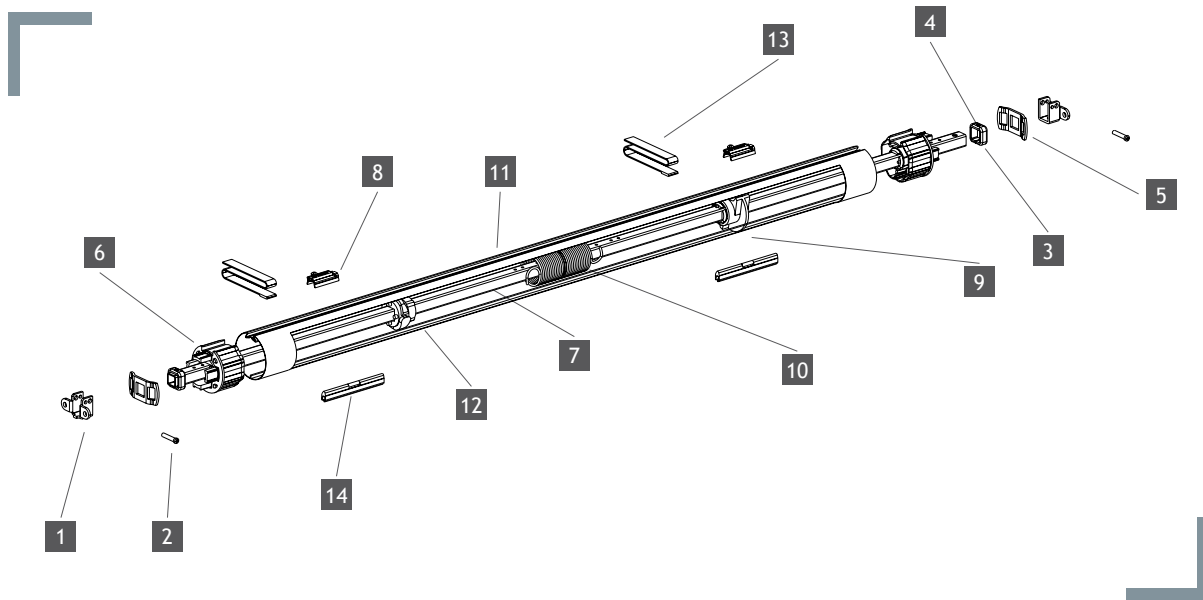
With compensation system



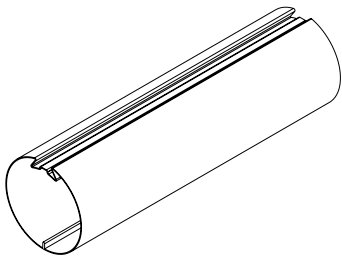
18

Number (on the drawing)	Description	Reference	Number (per barrel)
1	Spring compensation	(see page 29 for components)	1
2	62mm tube	F2000/G00	1
3	Motor		1
4	DVA	D115-1 or other	See fitting instruction - page 27
5	Fixing bracket	D101/G00	1/DVA
6	Tape	D103	1/DVA
7	Ring	D102-62	

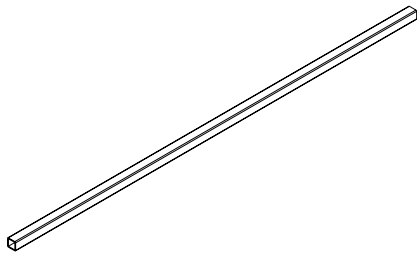
B. 62mm Spring Barrel



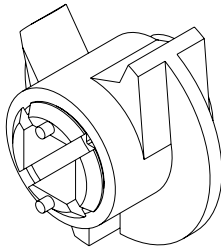
Number (on the drawing)	Description	Reference	Number (per barrel)
1	Shoe	2006/G00	2
2	Screw for shoe	BL0TC008	2
3	Locking ring	2018/Z00	2
4	Grub screw for 2018/Z00	DE1DI007	2
5	Locking fork	2008-BF	2
6	End block	2003	2
7	16mm square shaft	F16-15	2
8	Brackets	2009/G00	3/m
9	Rotating attachment	2004	1
10	Spring	R30-285 to R49-765	1
11	Tube	F2000/G00	1
12	Fixed attachment	2005	1
13	Tape	SAN0004	3/m
14	Curtain attachment	D18 or D19	3/m



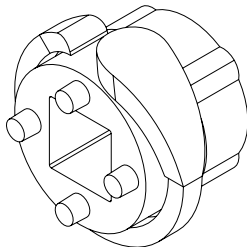
Description		
62mm tube Galvanized steel		
Reference	Packing	No
F2000/G00	6 m	11



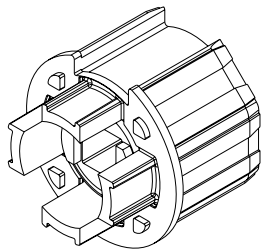
Description		
16mm square shaft For spring barrel Galvanized steel		
Reference	Packing	No
F16-15	6,1m	7



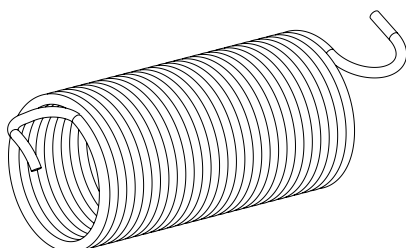
Description		
Rotating attachment For spring barrel with 16mm square shaft (F16-15) Acetal resin and polyamide		
Reference	Packing	No
2004	1	9



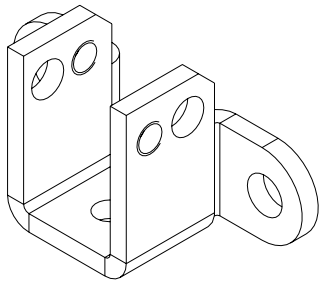
Description		
Fixed attachment For spring barrel with 16mm square shaft (F16-15) Acetal resin and polyamide		
Reference	Packing	No
2005	1	12



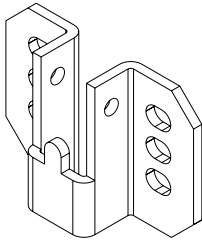
Description		
End block For spring barrel with 16mm square shaft (F16-15) Acetal resin and polyamide		
Reference	Packing	No
2003	1	6



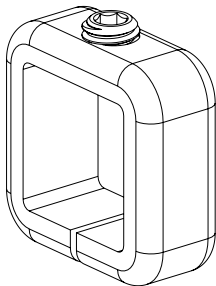
Description		
Spring Spring choice can be found page 30 Carbon alloy steel		
Reference	Packing	No
R30-285 to R49-765	1	10



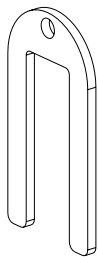
Description		
Shoe + Screw BLOT008		
To be used with 16mm square shaft (F16-15) Galvanized steel		
Reference	Packing	No
2006/G00	1	1 + 2
BLOT008	1	



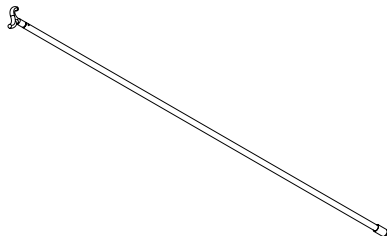
Description		
Alternative heavy duty shoe + screw & nut		
To be used with 16mm square shaft (F16-15) Galvanized steel		
Reference	Packing	No
2032-ATO/G00	1	1 + 2



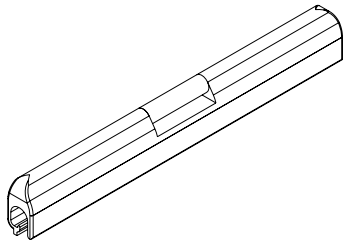
Description		
Locking ring + grub Screw		
To be used with 16mm square shaft (F16-15) Zinc coated steel		
Reference	Packing	No
2018/Z00	1	3 + 4
DE1DI007	1	



Description		
Locking fork		
2008 : Steel		
Reference	Packing	No
2008	1	5



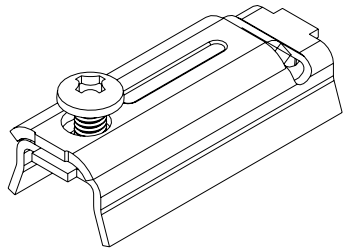
Description		
Pull down pole with hook - 1m long		
For use with spring barrel system Steel, polyamide and vinyl		
Reference	Packing	No
D95-10	1	-



Description

Curtain attachments
Glass fibre reinforced polyamide

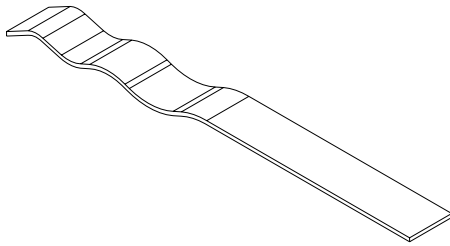
Reference	Packing	No
D18 (for mini lath)	1	14
D19 (for thick lath)	1	



Description

Fixing brackets for 62 & 89 mm
Link the attachment to the tube
Galvanized steel

Reference	Packing	No
2009/G00 (for 62 mm tube)	1	8
2009-89/G00 (for 89 mm tube)	1	



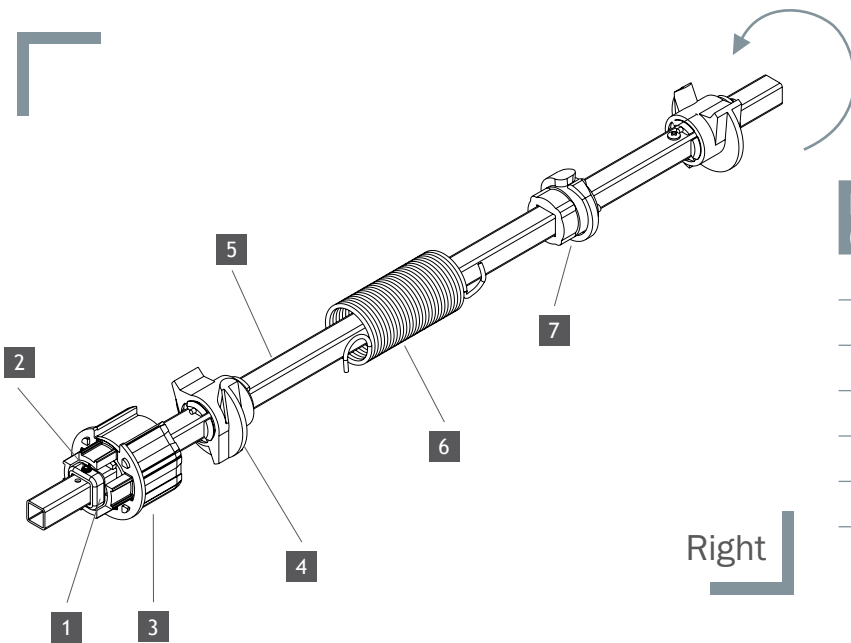
Description

Tape for D18 & D19

Reference	Packing	No
SAN0004	50m	13

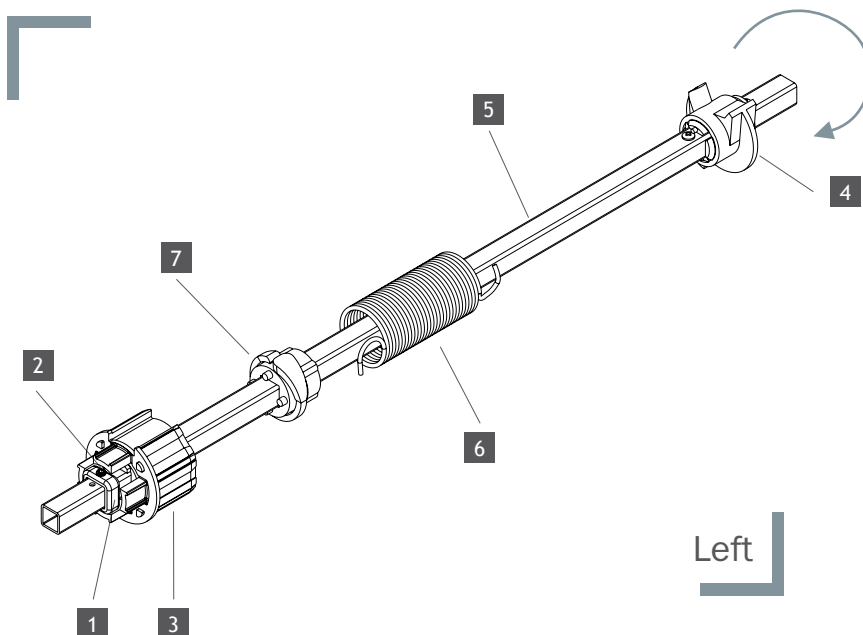
B. 62mm Spring Barrel

Components for spring compensation



Turn curtain in direction of arrow to tension spring.

Number (on the drawing)	Reference	Number (per barrel)
1	2018/Z00	3
2	DE1DI007	3
3	2003	1
4	2004	2
5	F16-15	1
6	Spring	1
7	2005	1



Turn curtain in direction of arrow to tension spring.

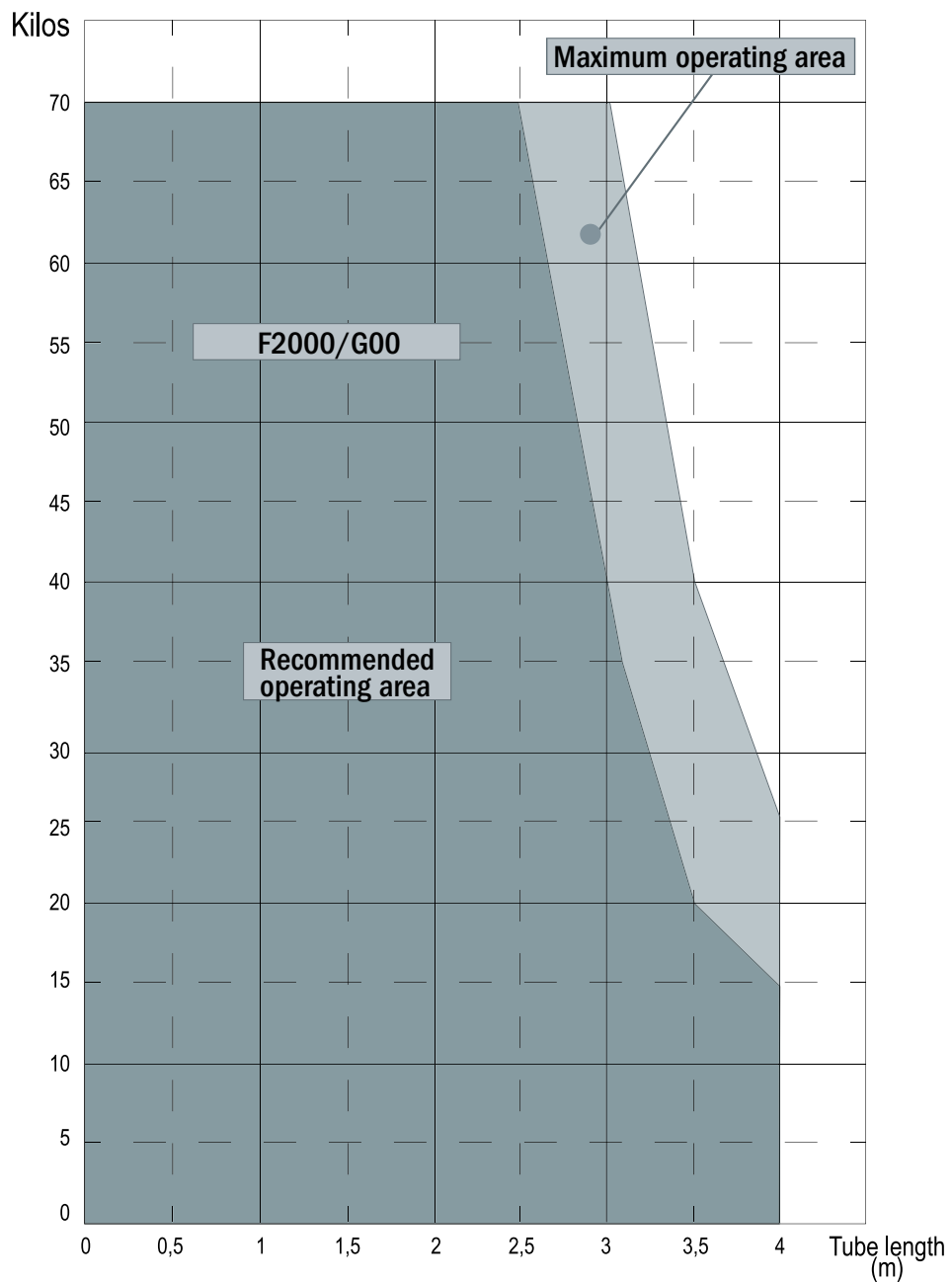
Number (on the drawing)	Reference	Number (per barrel)
1	2018/Z00	3
2	DE1DI007	3
3	2003	1
4	2004	1
5	F16-15	1
6	Spring	1
7	2005	1

C. Deflection chart 62mm Tube

Range Chart

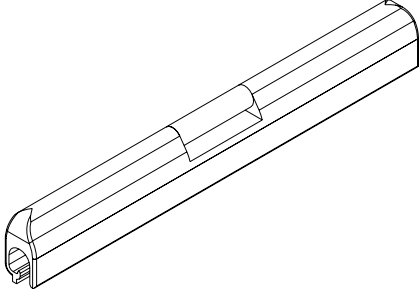
Recommended deflection : 10mm
Maximum deflection accepted : 20mm

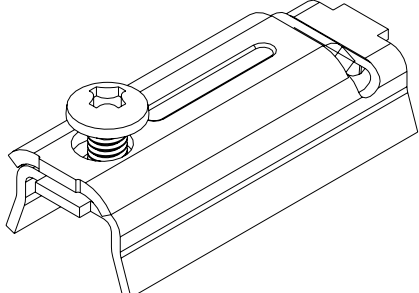
Thickness 6 /10

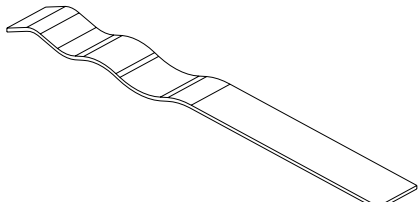


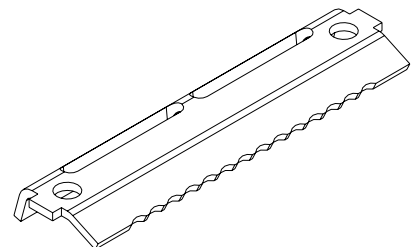
A. Others components Attachments

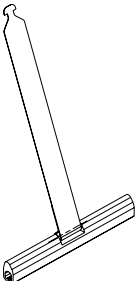
Simple attachment

	Description	
	Curtain attachments for lifting only 10kg per attachment maximum 3 attachments per metre Glass fibre reinforced polyamide	
	Reference	Packing
D18 (for mini lath)	1	
D19 (for thick lath)	1	

	Description	
	Brackets for 62 & 89 mm Link the attachment to the tube To use with D18 or D19 and SAN0004 Galvanized steel	
	Reference	Packing
2009/G00 (for 62 mm tube)	1	
2009-89/G00 (for 89 mm tube)	1	
D200/G00 (for octagonal tubes)	1	

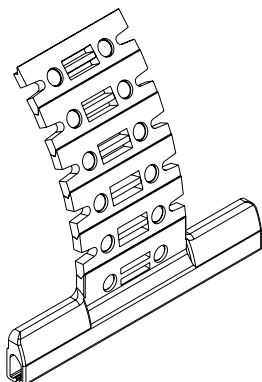
	Description	
	Tape for D18 & D19 1 per attachment	
	Reference	Packing
SAN0004	50m	

	Description	
	Quick clip attachment for 62 mm tube to use with D18 or D19 and SAN0004 Galvanized steel	
	Reference	Packing
2013/G00	1	

	Description	
	«T» spring attachment For mini and thick laths 140 mm length To use with 40, 60 and 70 octagonal tubes 3 attachments per metre	
	Reference	Packing
D18-140-AT (mini lath)	1	
D19-140-AT (thick lath)	1	

A. Others components Attachments

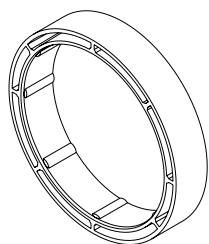
DVA



DVA : Automatic Locking System

The most efficient locking device
Resist to a lifting force up to 150kg
To be use with gearbox or motor
Suitable on all our tube
It can be adapted to suite most of the lath of the maket form 37mm to 77mm
Glass fibre reinforced polyamide and inox
Number of elements must be chosen according to the curtain diameter

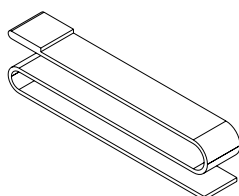
Reference	Description	Packing
D115-1	DVA 5 elements for mini lath	1
D117-1	DVA 7 elements for mini lath	1
D120-1	DVA 10 elements for mini lath	1
D105-1	DVA 5 elements for thick lath	1
D107-1	DVA 7 elements for thick lath	1
D110-1	DVA 10 elements for thick lath	1



Description

Ring for 89, 62 and 60 oct tubes
Polypropilene

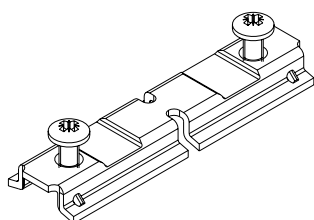
Reference	Packing
D102 (for 60 oct and 62 Dp tube)	1
D102-62 (for 62 tube, exterior diameter 72mm)	1
D102-89 (for 89 tube, exterior diameter 99mm)	1



Description

Tape

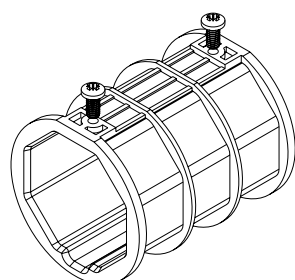
Reference	Packing
D103	1



Description

Brackets for 62 and 89 mm tubes
Link the attachment to the tube
Galvanized steel

Reference	Packing
D101/G00 (for 62mm tube)	1
D101-89/G00 (for 89mm tube)	1

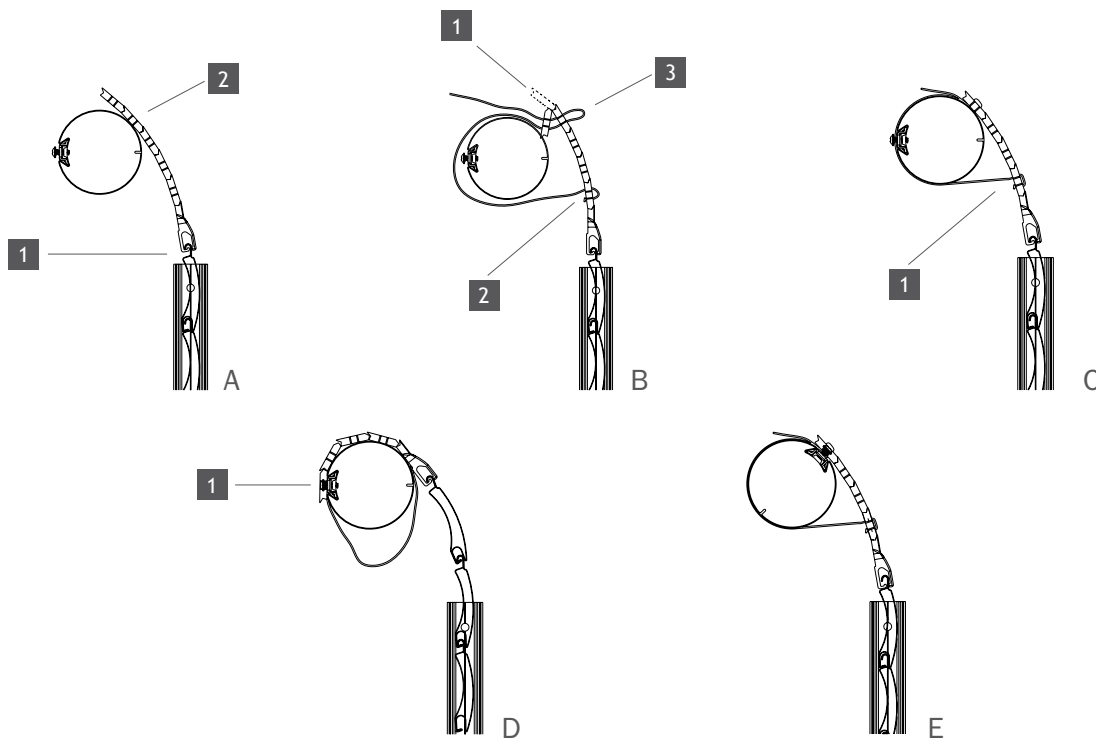


Description

DVA & ATR connector for 40, 60 & 70 octagonal tube
Glass fibre reinforced polyamide

Reference	Packing
D140 (40oct)	1
D141 (60oct)	1
D142 (70oct)	1

Fitting Instructions for the DVA locking attachments



Note: Ensure the slides D101/G00 or D101-89/G00 and rings D102-62 or D102-89 are inserted into the keyway on the tube, before setting the barrel into shoes.

1) With the shutter into the lower position, slide the DVA onto the lath & rest it against the tube, taking care to ensure that the top lath is positioned as indicated in the diagram (fig.A1) within the slide guide channels. The DVA element at the tangent to the tube will be selected for fixing (fig. A2). If the tangent is located between two elements then the upper one must be selected. Should unused elements remain then they must be removed by breaking the steel leaves (fig.B1).

2) Place the strap within the slots of one element (fig.B2). This element is selected in order to ensure that the strap is approximately horizontal to the underside of the tube (fig.C1). It is preferable for the strap to be inclined toward the shutter rather than the tube. Pass the other end of the strap as indicated in the diagram (fig.B3) in the first component, stretching it without strain, but ensuring that it is not loose (fig.C).

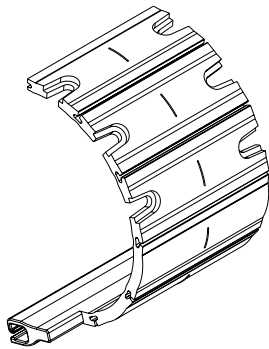
3) Rotate the roller & attach the DVA to the fixing slides (fig.D1).

4) Lower the shutter as far as possible, forcing down slightly on the shutter. The elements of the DVA will be jammed against each other, while the stretched strap will cause the DVA to arch, preventing it from distorting (fig.E). Should any distortion be noted in the DVA then the setting must be adjusted, either by shifting the strap or by modifying its torsion.

In all cases the DVA must be used with an irreversible drive system such as gear box or tubular motor.

At least two DVA per shutter are required & these must be located as near to the side guides as possible. Additional lifting straps must be fitted as necessary to carry the weight of the shutter.

ATR: Rigid Attachment



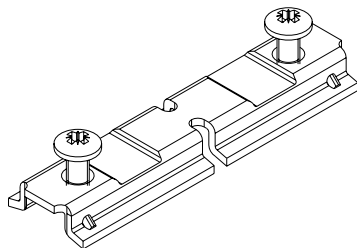
Lifting and locking device
 For gearbox or motors with automatic limits.
 motors with manual limits max 20Nm
 To be use with our different tubes
 It can be adapted to suite most of the lath on the market from 37mm to 77mm
 Polypropylene
 Number of elements must be chosen according to the curtain diameter

Reference	Description	Packing
D1804-M	ATR 4 elements for mini lath	1
D1805-M	ATR 5 elements for mini lath	1
D1806-M	ATR 6 elements for mini lath	1
D1804	ATR 4 elements for thick lath	1
D1805	ATR 5 elements for thick lath	1
D1806	ATR 6 elements for thick lath	1

Characteristics **Fitting**

With Motor with Automatic limits:
 · 2 ATR for shutter less than 1500mm wide
 · 1 ATR for each additionnal metre
 With gearbox without limits or Motor with automatic limits (20Nm):
 · 3 ATR for shutter less than 1500mm wide
 · 1 ATR for each additionnal metre
 Maximum weight per attachment : 10kg
 Maximum torque: 20 Nm

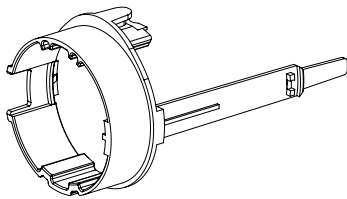
1/ The last lath must be engaged into the guide
 2/ Remove the elements which extend beyond the barrel
 3/ The fixing should be inserted into the tangential element (If the tangential element is between 2 other elements, select the lower element)



Description

Brackets for 62 and 89 mm tubes
 Link the ATR to the tube
 Galvanized steel

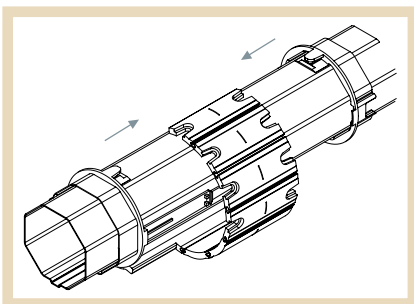
Reference	Packing
D101/G00 (for 62mm tube)	1
D101-89/G00 (for 89mm tube)	1



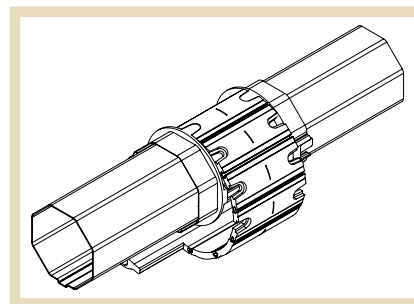
Description

ATR connector for 40 & 60 octagonal tube

Reference	Packing
D136 (60octo)	1
D137 (40octo)	1

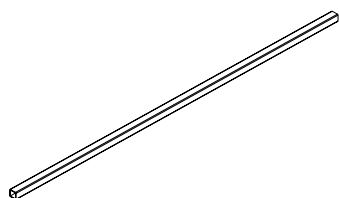


1/ Slide the parts on the tube as shown. Place the ATR in position

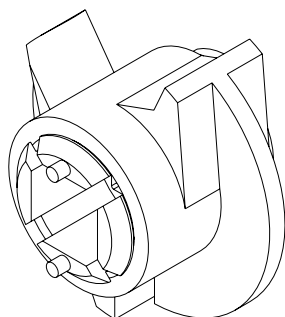


2/ Locate the notch in the ATR on both sides and push tightly together until the fingers locate and «click» and lock in place.

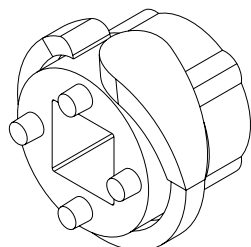
B. Others components **Components for compensation and pull-up**



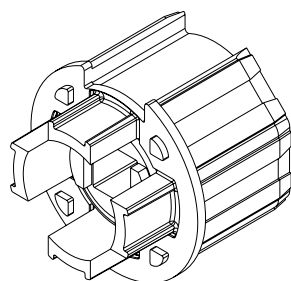
Description	
16mm square shaft For spring barrel Galvanized steel	
Reference	Packing
F16-15	6,1m



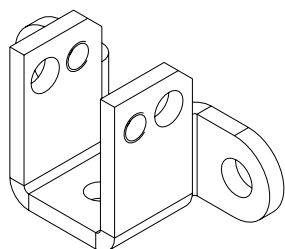
Description	
Rotating attachment For spring barrel with 16mm square shaft (F16-15) Acetal resin and polyamide	
Reference	Packing
2004-892 (89mm tube)	1
2004 (62mm tube)	1
2317 (60 oct tube)	1
2114 (70 oct tube)	1



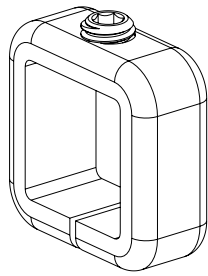
Description	
Fixed attachment For spring barrel with 16mm square shaft (F16-15) Acetal resin and polyamide	
Reference	Packing
2005-892 (89mm tube)	1
2005 (62 round & octagonal tubes 60 & 70)	1



Description	
End block For spring barrel with 16mm square shaft (F16-15) Acetal resin and polyamide	
Reference	Packing
2003-892 (89mm tube)	1
2003 (62mm and 60 oct tubes)	1
2017 (70 oct tube)	1



Description	
Shoe + Screw BLOT008 To be used with 16mm square shaft (F16-15) Galvanized steel	
Reference	Packing
2006/G00	1
BLOT008	1



Description

Locking ring + grub Screw

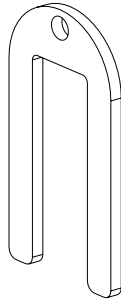
To be used with 16mm square shaft (F16-15)
Zinc coated steel

Reference

2018/Z00
DE1DI007

Packing

1
1



Description

Locking fork

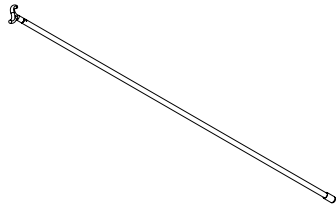
2008 & 2008-BF : Steel
2008-B/G00: Galvanized steel

Reference

2008
2008-BF
2008-B/G00

Packing

1
1
1



Description

Pole down with hook - 1m long

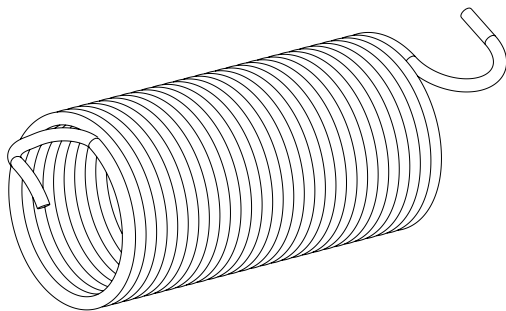
For use with spring barrel system
Steel, polyamide and vinyl

Reference

D95-10

Packing

1



Description

Springs

Carbon alloy steel

Reference

R27-337
R30-285
R34-392
R39-477
R44-419
R44-605
R49-621
R49-765
R54-610
R54-840
R59-710
R64-870

Packing

1
1
1
1
1
1
1
1
1
1
1
1

If you take the size of the spring and add 266mm. This is the smallest width you can make on the 89mm tube with 8 to 9 turns of tension.

Spring length
R44-419 short
R44-605
R49-721 short
R49-765
R54-840
R59-710
R64-870

Min inside penent plate size
685mm
871mm
887mm
1031mm
1106mm
976mm
1136mm

B. Spring selection charts

Choice of Springs for 62 mm or 60 Oct tubes

TUBE DP62 or 60 octagonal																															
LATH 44mm double skin extruded aluminium (weight 6Kg/m sq)																															
Height	Width																														
	1m 00	1m 10	1m 20	1m 30	1m 40	1m 50	1m 60	1m 70	1m 80	1m 90	2m 00	2m 10	2m 20	2m 30	2m 40	2m 50	2m 60	2m 70	2m 80	2m 90	3m 00	3m 10	3m 20	3m 30	3m 40	3m 50	3m 60	3m 70	3m 80	3m 90	4m 00
1.00	R34					R39					R44					R49					R44*2					4,5					
1.25	R34			R39			R44					R49					R44*2					5,1									
1.50	R34	R39			R44					R49					R44*2					5,7											
1.75	R39			R44					R49					R44*2					6,2												
2.00	R39			R44					R49					R44*2					R49*2					6,7							
2.25	R39	R44					R49					R44*2					R49*2					7,2									
2.50	R39	R44			R49					R44*2					R49*2					7,7											
2.75	R44			R49					R44*2					R49*2					8,1												
3.00	R44			R49			R44*2					R49*2					8,5														

All information in these charts are based on theoretical calculations and in practise there could be some minor variations.

TUBE DP62 or 60 octagonal																															
LATH Foamfilled from 37mm to 50mm (weight 2.7 to 3.8 Kg/m sq)																															
Height	Width																														
	1m 00	1m 10	1m 20	1m 30	1m 40	1m 50	1m 60	1m 70	1m 80	1m 90	2m 00	2m 10	2m 20	2m 30	2m 40	2m 50	2m 60	2m 70	2m 80	2m 90	3m 00	3m 10	3m 20	3m 30	3m 40	3m 50	3m 60	3m 70	3m 80	3m 90	4m 00
1.00	R30					R34					R39					R44					4,4										
1.25	R30			R34			R39					R44					4,9														
1.50	R30			R34			R39					R44					R49					5,5									
1.75	R30	R34			R39					R44					R49					6,0											
2.00	R30	R34			R39					R44					R49					6,5											
2.25	R34					R39					R44					R49					6,9										
2.50	R34			R39			R44					R49					7,4														
2.75	R34			R39			R44			R49					7,8																
3.00	R34			R39			R44			R49					8,2																

All information in these charts are based on theoretical calculations and in practise there could be some minor variations.

**TUBE DP62 or 60 octagonal
LATH 55mm double skin extruded (weight 8.5 Kg/m sq)**

Height	Width																				Spring turns									
	1m 00	1m 10	1m 20	1m 30	1m 40	1m 50	1m 60	1m 70	1m 80	1m 90	2m 00	2m 10	2m 20	2m 30	2m 40	2m 50	2m 60	2m 70	2m 80	2m 90		3m 00	3m 10	3m 20	3m 30	3m 40	3m 50	3m 60	3m 70	3m 80
1.00	R39		R44				R49						R44 * 2						R49 * 2						4,1					
1.25	R44				R49				R44 * 2						R49 * 2						4,6									
1.50	R44		R49				R44 * 2						R49 * 2						5,0											
1.75	R44		R49				R44 * 2						R49 * 2						5,5											
2.00	R49		R39*2		R44 * 2						R49 * 2						5,9													
2.25	R49		R39*2		R44 * 2				R49 * 2						6,3															

All information in these charts are based on theoretical calculations and in practise there could be some minor variations.

B. Spring selection charts

Choice of Springs for 89 mm tube

TUBE DP89mm LATHS 3" steel curly laths (weight 10 Kg/m sq) LOCKING DEVICES None																															
Height	Width																														
	1m 00	1m 10	1m 20	1m 30	1m 40	1m 50	1m 60	1m 70	1m 80	1m 90	2m 00	2m 10	2m 20	2m 30	2m 40	2m 50	2m 60	2m 70	2m 80	2m 90	3m 00	3m 10	3m 20	3m 30	3m 40	3m 50	3m 60	3m 70	3m 80	3m 90	4m 00
1.00	R44		R49		R54-840								R54-610								R59				R64				3,6		
1.25	R44	R49		R54-840								R54-610								R59				R64				4,1			
1.50		R49	R54-840				R54-610								R59				R64				R54-610 * 2				4,5				
1.75	R49	R54-840				R54-610								R59				R64				R54-610 * 2				R59 * 2		4,9			
2.00	R54-840				R54-610								R59				R64				R54-610 * 2				R59-710 * 2				5,3		
2.25	R54-840				R54-610								R59				R64				R54-610 * 2				R59 * 2				R64 * 2	5,6	
2.50	R54-840		R54-610				R59				R62		R54-610 * 2								R59 * 2				R64 * 2				6,0		
2.75	R54-840	R54-610				R59				R64				R54-840 * 2																6,3	

All information in these charts are based on theoretical calculations and in practise there could be some minor variations.

TUBE DP89mm LATHS 3" steel curly laths (weight is 10 Kg/m sq) LOCKING DEVICES D106 ring + attachment																															
Height	Width																														
	1m 00	1m 10	1m 20	1m 30	1m 40	1m 50	1m 60	1m 70	1m 80	1m 90	2m 00	2m 10	2m 20	2m 30	2m 40	2m 50	2m 60	2m 70	2m 80	2m 90	3m 00	3m 10	3m 20	3m 30	3m 40	3m 50	3m 60	3m 70	3m 80	3m 90	4m 00
1.00	R49				R54-840								R54-610								R59				R64				3,2		
1.25	R54-840				R54-610								R59				R64				R54-610 * 2				3,6						
1.50	R54-840		R54-610				R59				R64				R54-610 * 2				R59 * 2				4,0								
1.75	R54-610				R59				R64				R54-610 * 2				R59 * 2				R64 * 2				4,3						
2.00	R54-610		R59				R64				R54-610 * 2				R59 * 2				R64 * 2				4,7								
2.25	R59				R64								R54-610 * 2				R59 * 2				R64 * 2				5,0						
2.50	R59				R64				R59 * 2								R64 * 2								5,3						
2.75	R59		R64				R54-610 * 2				R59 * 2				R64 * 2								5,6								
3.00	R59		R64		R54-610 * 2				R59 * 2				R64 * 2								5,9										

All information in these charts are based on theoretical calculations and in practise there could be some minor variations.

TUBE DP89mm
LATHS 77mm or 75mm foam filled garage door (weight approx 4.8 Kg/m sq)
LOCKING DEVICES None

Height	Width																								Spring turns					
	1m 00	1m 10	1m 20	1m 30	1m 40	1m 50	1m 60	1m 70	1m 80	1m 90	2m 00	2m 10	2m 20	2m 30	2m 40	2m 50	2m 60	2m 70	2m 80	2m 90	3m 00	3m 10	3m 20	3m 30		3m 40	3m 50	3m 60	3m 70	3m 80
1.00	R39				R44								R49								R54-840								3,5	
1.25	R39			R44						R49						R54-840						R54-610						3,9		
1.50	R39	R44				R49				R54-840								R54-610						R59	4,3					
1.75	R44			R49				R54-840								R54-610						R59			R64	4,6				
2.00	R44		R49				R54-840								R54-610						R59			R64			5,0			
2.25	R44	R49	R54-840						R54-610						R59						R64			5,3						
2.50	R44	R49			R54-840						R54-610						R59						R64			R54-610 * 2	5,6			
2.75	R44	R49	R54-840						R54-610						R59						R64			R54-840 * 2	R54-810 * 2	5,9				
3.00	R49		R54-840				R54-610								R59-710						R64-870			R54-840 * 2			R54-610 * 2			6,2

All information in these charts are based on theoretical calculations and in practise there could be some minor variations.

TUBE DP89mm
LATHS 77mm or 75mm foam filled garage door (weight approx 4.8 Kg/m sq)
LOCKING DEVICES D106 ring + attachment

Height	Width																								Spring turns					
	1m 00	1m 10	1m 20	1m 30	1m 40	1m 50	1m 60	1m 70	1m 80	1m 90	2m 00	2m 10	2m 20	2m 30	2m 40	2m 50	2m 60	2m 70	2m 80	2m 90	3m 00	3m 10	3m 20	3m 30		3m 40	3m 50	3m 60	3m 70	3m 80
1.00	R34	R39				R44								R49								R54-840								3,2
1.25	R39	R44			R49						R54-840						R54-610						R59			3,6				
1.50	R44				R49				R54-840								R54-610						R59						4,0	
1.75	R44		R49				R54-840						R54-610						R59			R64			4,4					
2.00	R49			R54-840						R54-610						R59						R64						4,7		
2.25	R49			R54-840						R54-610						R59						R64						5,1		
2.50	R49		R54-840						R54-610						R59						R64						R54-610*2	5,4		
2.75	R49	R54-840				R54-610				R59						R64						R54-610*2			5,7					
3.00	R49	R54-840				R54-610				R59						R64			R54-610*2						6,0					

All information in these charts are based on theoretical calculations and in practise there could be some minor variations.

TUBE DP89mm
LATHS Plastic nylon link bar grilles (weight approx 4 Kg/m sq)
LOCKING DEVICES None

Height	Width																				Spring turns									
	1m 00	1m 10	1m 20	1m 30	1m 40	1m 50	1m 60	1m 70	1m 80	1m 90	2m 00	2m 10	2m 20	2m 30	2m 40	2m 50	2m 60	2m 70	2m 80	2m 90		3m 00	3m 10	3m 20	3m 30	3m 40	3m 50	3m 60	3m 70	3m 80
1.00	R30		R34				R39						R44						R49		3,7									
1.25	R34				R39				R44						R49				R54-840		4,2									
1.50	R34		R39				R44				R49				R54-840						4,7									
1.75	R34	R39			R44						R49				R54-840						5,1									
2.00	R34	R39			R44				R49				R54-840				R54-610				5,5									
2.25	R34	R39			R44				R49				R54-840				R54-610				6,0									
2.50	R39			R44				R49				R54-840				R54-610						6,3								
2.75	R39		R44				R49				R54-840				R44 * 2		R49 * 2				6,7									
3.00	R39	R44			R49				R54-840				R44 * 2				R49 * 2				7,0									

All information in these charts are based on theoretical calculations and in practise there could be some minor variations.

TUBE DP89mm
LATHS Plastic nylon link bar grilles (weight approx 4 Kg/m sq)
LOCKING DEVICES 2020 ring

Height	Width																				Spring turns									
	1m 00	1m 10	1m 20	1m 30	1m 40	1m 50	1m 60	1m 70	1m 80	1m 90	2m 00	2m 10	2m 20	2m 30	2m 40	2m 50	2m 60	2m 70	2m 80	2m 90		3m 00	3m 10	3m 20	3m 30	3m 40	3m 50	3m 60	3m 70	3m 80
1.00	R34				R39				R44						R49						R54-840		3,3							
1.25	R39				R44				R49						R54-840				R54-610				3,7							
1.50	R39	R44				R49				R54-840				R54-610						4,1										
1.75	R39	R44			R49				R54-840				R54-610				R59				4,5									
2.00	R44			R49				R54-840				R54-610				R59						4,9								
2.25	R44		R49			R54-840						R54-610				R59				R64		5,2								
2.50	R44		R49			R54-840		R54-610						R59				R64				5,6								
2.75	R44	R49		R54-840				R54-610				R59				R64				5,9										
3.00	R49			R54-840				R54-610				R59				R64		R54-610 * 2				6,2								

All information in these charts are based on theoretical calculations and in practise there could be some minor variations.

TUBE DP89mm
LATHS 50mm/22g flat galvanized steel (weight approximately 12 Kg/m sq)
LOCKING DEVICES D106 ring + attachment

Height	Width																				Spring turns											
	1m 00	1m 10	1m 20	1m 30	1m 40	1m 50	1m 60	1m 70	1m 80	1m 90	2m 00	2m 10	2m 20	2m 30	2m 40	2m 50	2m 60	2m 70	2m 80	2m 90		3m 00	3m 10	3m 20	3m 30	3m 40	3m 50	3m 60	3m 70	3m 80	3m 90	4m 00
1.00	R44		R49			R54-840					R54-610					R59					R64					3,8						
1.25	R44		R49			R54-840					R54-610					R59					R64					R54-840 * 2	4,4					
1.50		R49		R54-840					R54-610					R59					R64					R54-610 * 2					4,9			
1.75	R49		R54-840					R54-610					R59					R64					R54-10 * 2					R59 * 2	5,3			
2.00	R54-840					R54-610					R59					R64					R54-840*2	R54-610 * 2					R59 * 2					5,8
2.25	R54-840	R54-610					R59					R64					R54-610 * 2					R59 * 2					6,2					
2.50	R54-840	R54-610					R59					R64	R54-840 * 2					R54-610					R59					R64 * 2	6,6			
2.75	R54-840																					7,0										

All information in these charts are based on theoretical calculations and in practise there could be some minor variations.

TUBE DP89mm
LATHS 3" steel curly perforated laths (weight Approximately 7.5 Kg/m sq)
LOCKING DEVICES D106 ring + attachment

Height	Width																				Spring turns									
	1m 00	1m 10	1m 20	1m 30	1m 40	1m 50	1m 60	1m 70	1m 80	1m 90	2m 00	2m 10	2m 20	2m 30	2m 40	2m 50	2m 60	2m 70	2m 80	2m 90		3m 00	3m 10	3m 20	3m 30	3m 40	3m 50	3m 60	3m 70	3m 80
1.00	R39		R44				R49					R54-840					R54-610					3,6								
1.25	R44			R49					R54-840					R54-610					R59					4,1						
1.50	R44		R49			R54-580					R54-610					R59					R64					4,5				
1.75	R44		R49			R54-840					R54-610					R59					R64					4,9				
2.00	R49		R54-840			R54-610					R59					R64					R54-610 * 2					5,3				
2.25	R49		R54-840			R54-610					R59					R64					R54-610					5,6				
2.50	R49		R54-840			R54-610					R59					R64		R54-610 * 2			R59-710 * 2					6,0				
2.75	R54-480			R54-610					R59					R64		R54-580*2			R54-610 * 2					R59 * 2					6,3	
3.00	R54-840			R54-610					R59					R54-610 * 2										6,6						

All information in these charts are based on theoretical calculations and in practise there could be some minor variations.

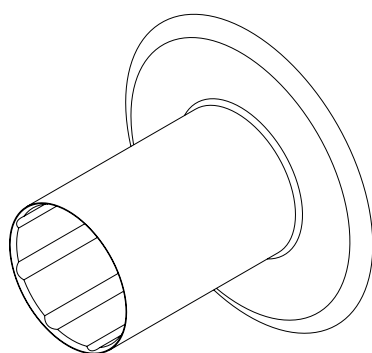
B. Spring selection charts

Choice of Springs for 70mm Oct tube

TUBE 70 Oct																																	
LATHS 77mm or 75mm foam filled garage door (weight approx 4.8 Kg/m sq)																																	
LOCKING DEVICES ATR or DVA attachment																																	
Height	Width	1m 00	1m 10	1m 20	1m 30	1m 40	1m 50	1m 60	1m 70	1m 80	1m 90	2m 00	2m 10	2m 20	2m 30	2m 40	2m 50	2m 60	2m 70	2m 80	2m 90	3m 00	3m 10	3m 20	3m 30	3m 40	3m 50	3m 60	3m 70	3m 80	3m 90	4m 00	Spring turns
1.00		R34					R39					R44					R49					R54-840	3,8										
1.25		R34	R39				R44				R49				R545-840						4,3												
1.50		R39				R44				R49				R54-840						4,7													
1.75		R39			R44			R49			R54-840				R54-610				5,2														
2.00		R39		R44			R49			R54-840				R54-610				5,6															
2.25		R39	R44			R49			R54-840				R54-610				R59	5,9															
2.50	R39	R44			R49			R54-840				R54-610				R59		6,3															
2.75		R44			R49			R54-840				R49 * 2				R54-840 * 2		6,6															
3.00		R44		R49			R54-840				R49 * 2				R54-840 * 2		7,0																

All information in these charts are based on theoretical calculations and in practise there could be some minor variations.

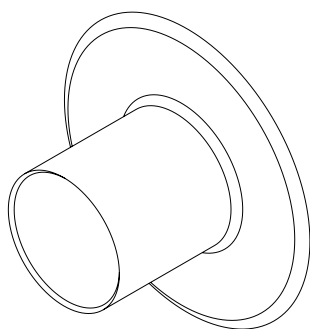
C. Others components **Additional components**



Description

Sliding flange for 62mm tube
(End locks not required with this system)
Acrylonitrile butadiene styrene

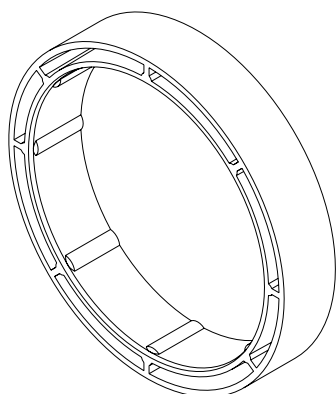
Reference	Flange diameter	Packing
SE7125-6	110	1
SE7137-6	122	1
SE7150-6	140	1
SE7165-6	155	1
SE7180-6	164	1
SE7205-6	193	1
2210	210	1
2230	230	1
BF6240	238	1



Description

Sliding flange for 89mm tube
(End locks not required with this system)
Acrylonitrile butadiene styrene

Reference	Flange diameter	Packing
2210-89	210	1
2230-89	230	1
BF9240	238	1

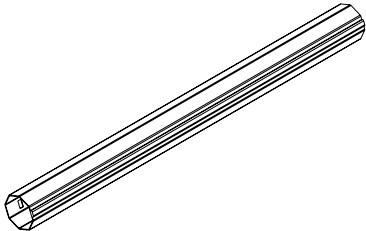


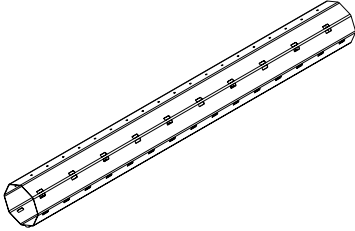
Description

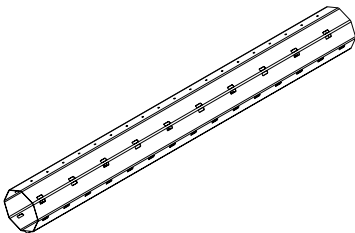
Winding ring

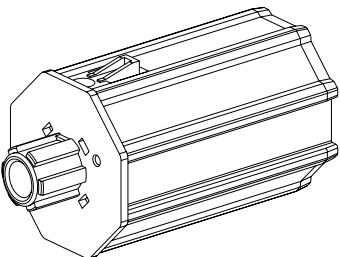
Ring for 89mm: exterior diameter 99mm
Ring for 62mm: exterior diameter 72mm
Ring for 62mm and 60oct: exterior diameter 80mm
Polypropilene

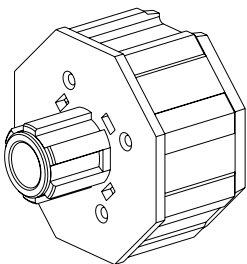
Reference	Packing
D102 (for 60 oct and 62 Dp tube)	1
D102-62 (for 62 tube, exterior diameter 72mm)	1
D102-89 (for 89 tube, exterior diameter 99mm)	1

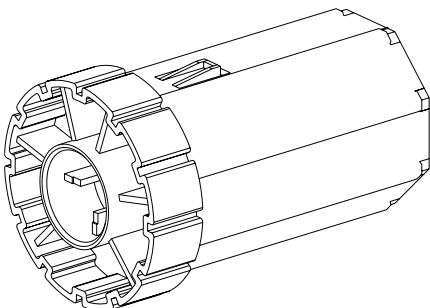
	Description	
	40mm octagonal tube with external cleat Fits the Somfy motor system Galvanised steel	
	Reference	Packing
	F3840/G00	6 m

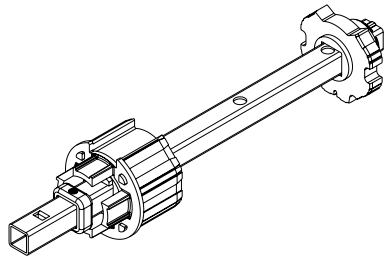
	Description	
	60mm octagonal tube with 0,6 mm or 0,8 mm wall Galvanised steel	
	Reference	Packing
	RT60 x 0,6	6 m
	RT60 x 0,8	6 m

	Description	
	70mm octagonal tube Galvanised steel	
	Reference	Packing
	RT70 x 1,2 wall	6 or 7 m

	Description	
	Retractable Drive block for use with T1002 SF gearbox	
	Reference	Packing
	T1029-H10 (40 oct tube)	1
	T1039-H10 (62mm tube)	1
	T1049-H10 (60 oct tube)	1

	Description	
	Drive Block non retractable for use with T1002 SF gearbox	
	Reference	Packing
	T1020 (40 oct tube)	1
	T1030 (62mm tube)	1
	T1040 (60 oct tube)	1

	Description	
	Retractable end block for pulley flanges	
	Reference	Packing
	SE1020 (40 oct tube)	1
	SE1030 (62mm tube)	1
SE1040 (60 oct tube)	1	
	SE1060 (bearing for retractable block)	1



Description

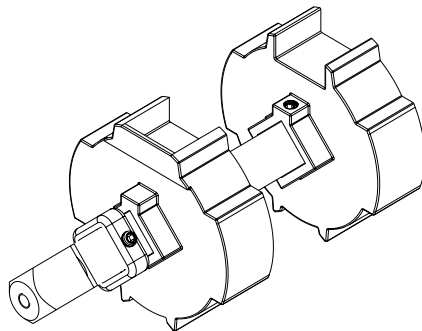
Telescopic dummy end
16 mm square shaft
Zinc coated steel & polyamide

Reference

2028 (fit 62mm & 60oct tubes no brake)
2024 (fit 70 Oct tube - no brake)
2029 (fit 89mm tube - no brake)

Packing

1
1
1



Description

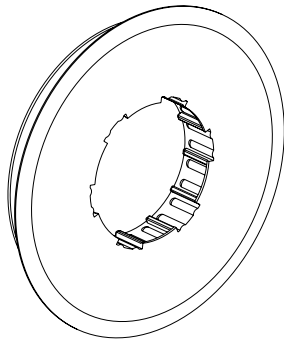
Telescopic dummy end for use with safety brake
18mm square drive
Three shaft length: 250mm, 600mm and 1200mm
Square shaft: galvanized steel, wheels: aluminium alloy

Reference

2036-89-250 (for 89mm tube)
2036-89-600 (for 89mm tube)
2036-89-1200 (for 89mm tube)
2036-70-250 (for 70 Oct tube)

Packing

1
1
1
1



Description

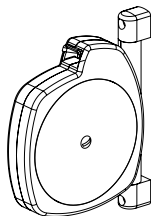
Pulley flange
for tape operation and SE 1020 to SE 1040

Reference

SE1125 (Diameter 110)
SE1137 (Diameter 122)
SE1150 (Diameter 140)
SE1165 (Diameter 155)
SE1180 (Diameter 170)
SE1205 (Diameter 193)

Packing

1
1
1
1
1
1



Description

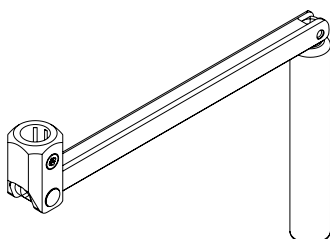
Self Coiling Tape spool

Reference

S17/T91 (without tape)
SAN0001 (tape)

Packing

1
50m



Description

160mm folding handle for 12 mm round shaft
Aluminium and polypropylene

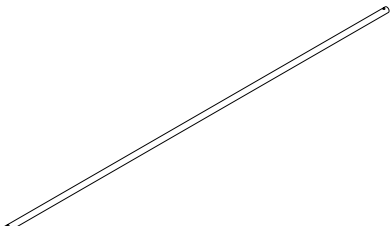
Reference

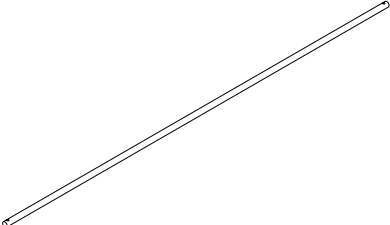
T45-12A/P90

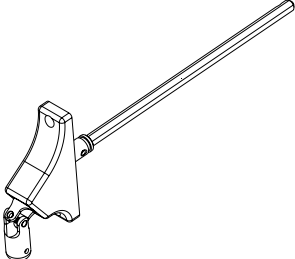
Packing

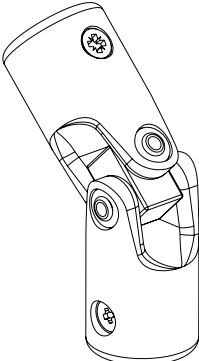
1

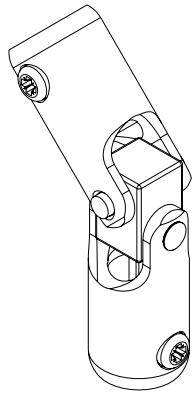
	Description	
	180mm folding handle Powder coated steel and polypropylene	
	Reference	Packing
	T89-B/T90 (for 12 mm round shaft)	1

	Description	
	Solid aluminium handle 12mm round shaft 1 or 1,9 m length Aluminium	
	Reference	Packing
	T6100-R12/P90	1
	T6190-R12/P90	1

	Description	
	Steel handle - 12 mm round shaft 1 or 1,9 m length Power coated steel	
	Reference	Packing
	T8100-R12/P90	1
	T8190-R12/P90	1

	Description	
	Drive Unit: Input diameter 12mm Output diameter 7mm hex 300mm long	
	Reference	Packing
	T291300-B/T91	1
	T291-B/T90 (without shaft)	1

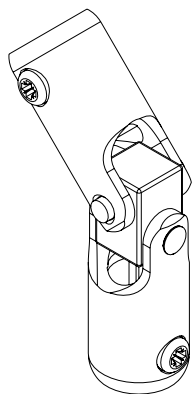
	Description	
	Universal joint Polyamid	
	Reference	Packing
	T34/T90 (7mm hex-10mm hex)	1
	T35/T90 (12mm round to 7mm hex)	1
	T36/T90 (10mm hex-10mm hex)	1
T38/T90 (12mm round- 12mm round)	1	
T39/T90 (7mm hex-7mm hex)	1	



Description

Universal joint
Power coated steel

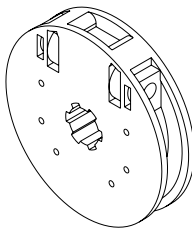
Reference	Packing
T24/T90 (7mm hex-10mm hex)	1
T22/T90 (7mm hex to 12mm round)	1
T19/T90 (10mm hex-10mm hex)	1
T21/T90 (12mm round- 12mm round)	1
T25/T90 (7mm hex-7mm hex)	1
T20/T90 (10mm hex- 12mm round)	1



Description

Universal joint
Chrome steel

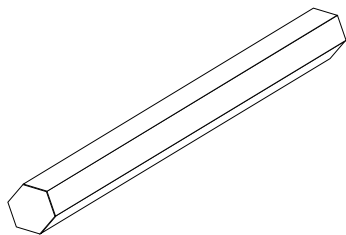
Reference	Packing
T24 (7mm hex-10mm hex)	1
T22 (7mm hex to 12mm round)	1
T19 (10mm hex-10mm hex)	1
T21 (12mm round- 12mm round)	1
T25 (7mm hex-7mm hex)	1
T20 (10mm hex- 12mm round)	1



Description

Gearbox
fits within the aluminium end caps
25 kilos lifting capacity

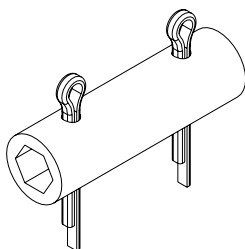
Reference	Packing
T1002-SF (gearbox without limits)	1



Description

Hexagonal and square shafts
Steel

Reference	Packing
JD129 (7mm hex shaft)	3 m
JD8mm (8mm square shaft)	3 m



Description

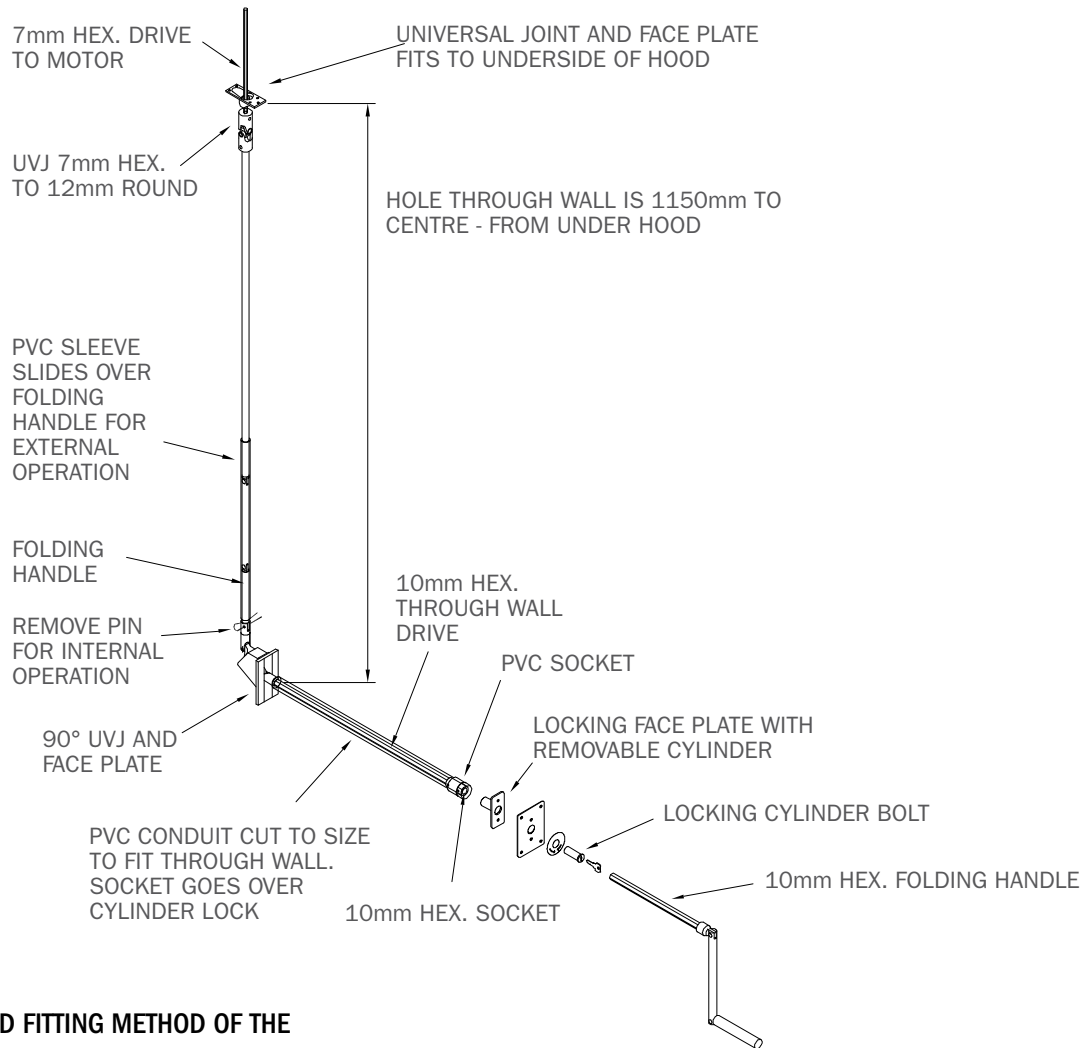
Steel Hexagonal socket 7mm hex to 7mm hex to extend motor drive eyes
Steel

Reference	Packing
ZLNAR	1

Remote through wall drive complete with lock and remote

FOLDING HANDLE

(PART No. T910784 - JD (UK) LTD.



RECOMMENDED FITTING METHOD OF THE REMOTE THROUGH WALL DRIVE UNIT SHOWN ASSEMBLED ABOVE

You will need to drill a 25mm hole through the wall, the distance from the underside of the box to the centre of the hole is 1150mm (see above).

Once drilled, measure the wall thickness face to face and cut the pvc conduit 28mm less than the wall thickness - cut from plain end of conduit. If wall thickness is less than 355mm you will have to reduce the length of the 10mm hex. Shaft by the difference between 355mm and the actual through wall dimension - cut it from the uvj 90° end of the shaft.

Fit internal handle in position by inserting 7mm shaft into motor override.

Push pvc conduit onto through wall drive drive and insert into hole in wall and screw 90° uvj to internal wall.

Locking face plate should push into pvc socket from the outside and secure to outside wall.

Connect the internal handle to the uvj and insert special split pin.

Test using external folding handle by inserting through wall where cylinder is removed, push into socket and rotate.

Remove handle and insert cylinder to close of opening.

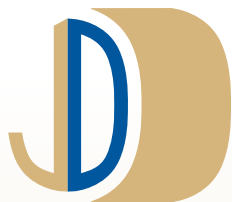
Demonstrate operation of both internal and external operation to homeowners.

Description

Handle kit for garage door

Include : 2 drive units, 1 folding handle and 1 folding crank handle

Reference	Packing
T910784	1
RC LOCK/MO (Removable cylinder lock for motor/manual override)	1



JD (UK) Ltd

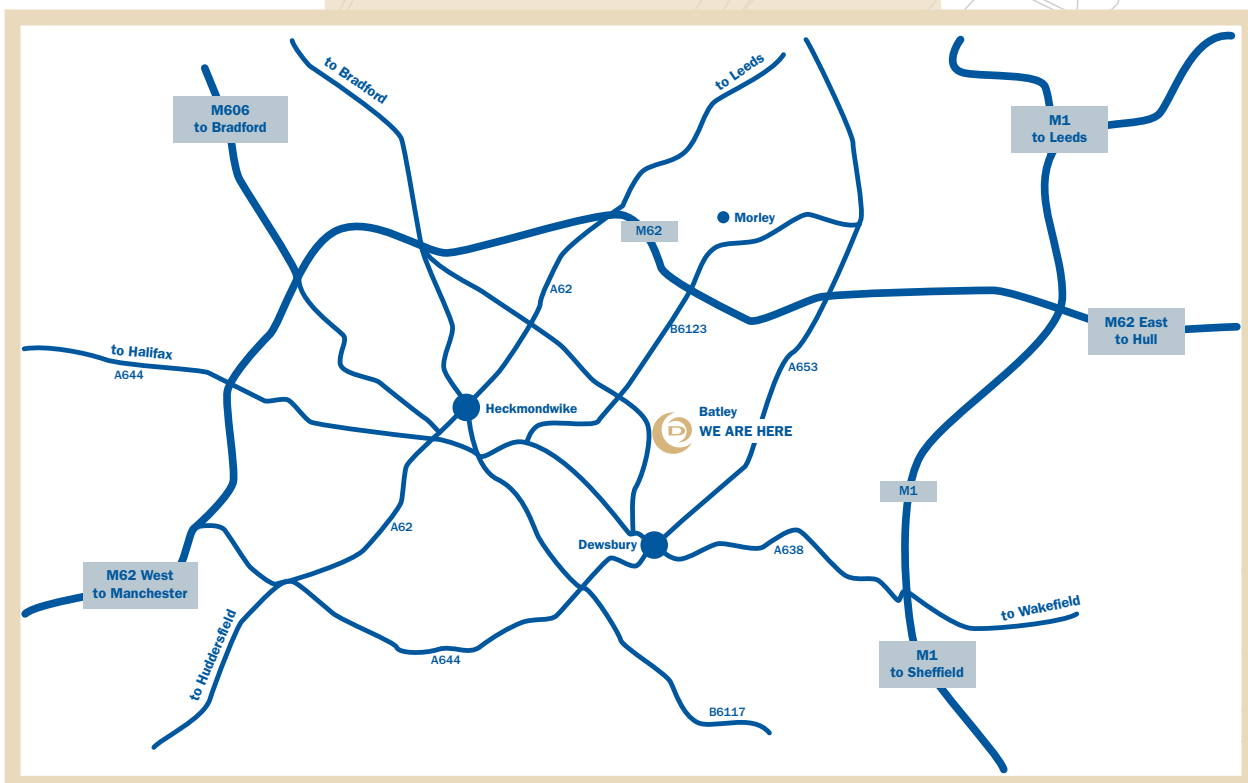
JD UK LTD
UNIT 2 VULCAN WORKS
GRANGE ROAD
BATLEY
WF17 6LL

USE SAT NAV POST CODE
WF17 6LN RIGHT TO OUR DOOR

TEL 01924 472924
FAX 01924 565495

E-MAIL : info@jdukLtd.co.uk

www.jdukLtd.co.uk



JD UK Ltd Distributors of
DEPRAT 
SYSTÈMES DE PROGRÈS