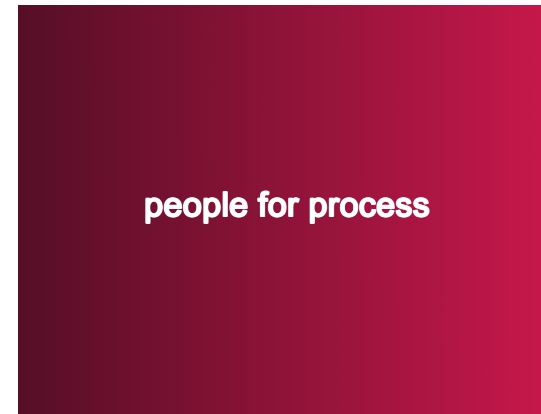




people for process

# Welcome at k-ma process

people for process



# Wet Mills

**TYPE K-MT**

## Wet mills TYPE K-MT

### Mills portfolio

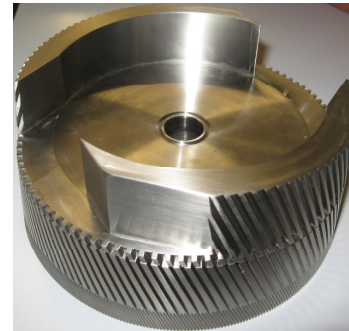
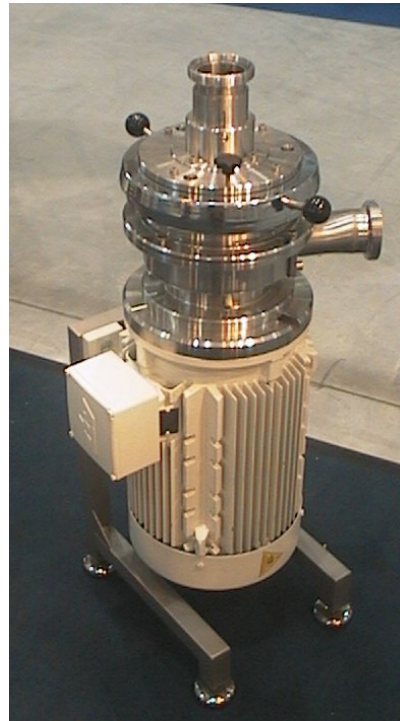
- Toothed colloid mills
- Corundum stone mills
- Mills with integrated feed pump
- Mustard lines
- Tahina plants



## Wet mills TYPE K-MT

## Toothed colloid mills

### Cutting / Grinding / Homogenising



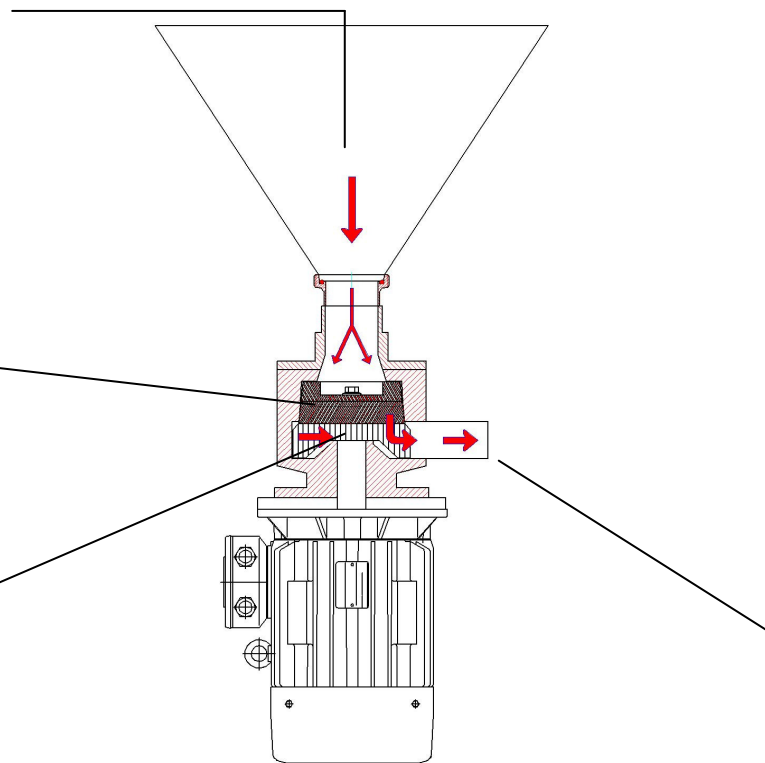
**Toothed colloid mills – Functional description**

Product feeding via  
hopper or feeding pump

Milling zone  
Rotor/stator colloid  
milling set

Ejector

Product outlet



## Wet mills TYPE K-MT



### Toothed colloid mills – Available types

Mill type	Main drive kW	Capacity min. l/h	Capacity max. l/h	Product fineness in $\mu\text{m}^*$
K-MT 60	5.5	20	150	150
K-MT 120	11.0	500	2,000	150
K-MT 160	22.0	3,000	15,000	150

\* Depending on product

---

## **Toothed colloid mills – Features**

- Vertical or horizontal design
- Product feed via feeding hopper or feeding pump
- Usable in closed pipe systems
- High capacity on little space requirement
- Different milling sets available, suited for your application
- Continuously adjustable milling gap
- 100% reproducibility
- Easy integration into existing systems



## Toothed colloid mills – Applications in the food industry

- Pre-grinding of mustard seed
- Pre-grinding of chilli
- Pre-grinding of nuts
- Grinding of herb pastes
- Pre-grinding of fruit pulp
- Grinding of soya beans
- Grinding of vegetables and fruits





## Wet mills TYPE K-MT

**K-MA**  
*process*

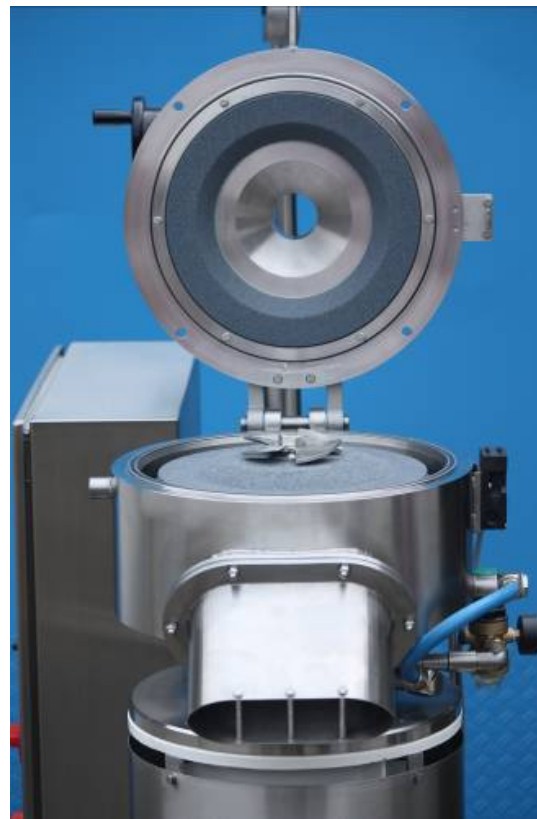
Applikations- und Verfahrenstechnik  
von Maschinenbau Kaltenbach GmbH

**KALTENBACH**

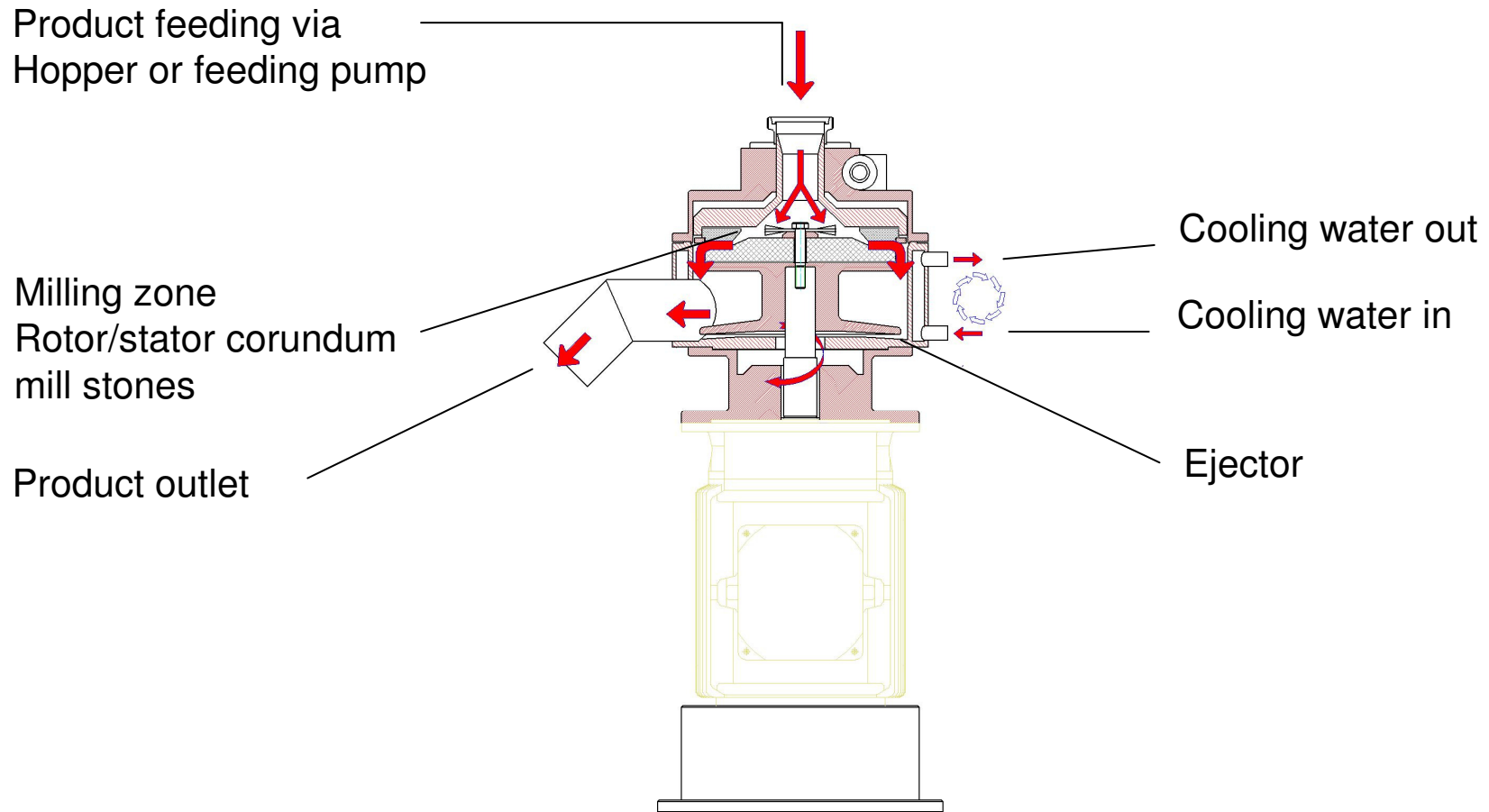
vielseitig · leistungsstark · kompetent

## Corundum stone mills

### Fine grinding



**Corundum stone mills – Functional description**



## Wet mills TYPE K-MT



### Corundum stone mills – Available types

Mill type	Main drive kW	Capacity min./max. approx. kg/h Pre-grinding mode	Capacity min./max. approx. kg/h Fine grinding mode	Product fineness in $\mu\text{m}^*$
K-MT 3	15.0	100 - 900	120 - 300	30
K-MT 4	22.0	300 – 2,000	300 - 600	30
K-MT 5	37.0	800 – 10,000	600 – 1,800	30

\* depending on product and fineness of pre-ground product

---

## **Corundum stone mills – Features**

- Vertical and horizontal design
- Product feed via feeding hopper or feeding pump
- Different grit sizes for individual applications
- Easy milling zone adjustment via manual hand wheel
- Automatic milling zone adjustment on option
- Best reproducibility
- Easy integration into existing systems

## Corundum stone mills – Applications in the food industry

- Mustard fine grinding
- Nuts and almonds
- Fruits and fruit pulp
- Vegetables
- Chilli
- Soya beans
- Cacao beans
- Herbal pastes
- Fish pastes
- Jam



## Wet mills TYPE K-MT

**K-MA**  
*process*  
Applikations- und Verfahrenstechnik  
von Maschinenbau Kaltenbach GmbH

  
**KALTENBACH**  
vielseitig · leistungsstark · kompetent

### Corundum stone mills with integrated feed pump



**Corundum stone mills with integrated feed pump – Available types**

<b>Mill type</b>	<b>Mill drive in KW</b>	<b>Feed pump drive in kW</b>	<b>Pump speed rpm.</b>	<b>Capacity min./max. approx. kg/h*</b>
<b>K-MT 3P</b>	15.0	0.75	60 - 300	120 – 300
<b>K-MT 4P</b>	22.0	1.1	60 - 300	300 - 600
<b>K-MT 5P</b>	37.0	2.2	60 - 300	600 – 1,800

\* depending on product and fineness grade



---

## **Corundum stone mills with integrated feed pump – Features**

- Product feed via an eccentric screw pump
- High throughput on little space
- Various mill stone grits for your individual application
- Easy manual milling zone adjustment by hand wheel
- Optional automatic milling zone adjustment
- Best reproducibility

---

## Corundum stone mills with integrated feed pump – Applications in the food industry

- Mustard
- Fruit pulp
- Jam



---

## **Mustard lines – Short description**

### **Main components of a mustard line**

1. 2 pre-mix vessels for mustard mash, with propeller mixer and discharge pump
2. Colloid mill as a pre-grinding mill for mustard mash
3. Buffer container for pre-ground mustard mash, with propeller agitator
4. Corundum stone mill with integrated feed pump for fine grinding
5. Buffer vessel for fine ground mustard
6. Cooling unit: heat plate exchanger with feeding pumps
7. Vacuum de-aerator with discharge pump
8. Storage tank with discharge pump

# Wet mills TYPE K-MT

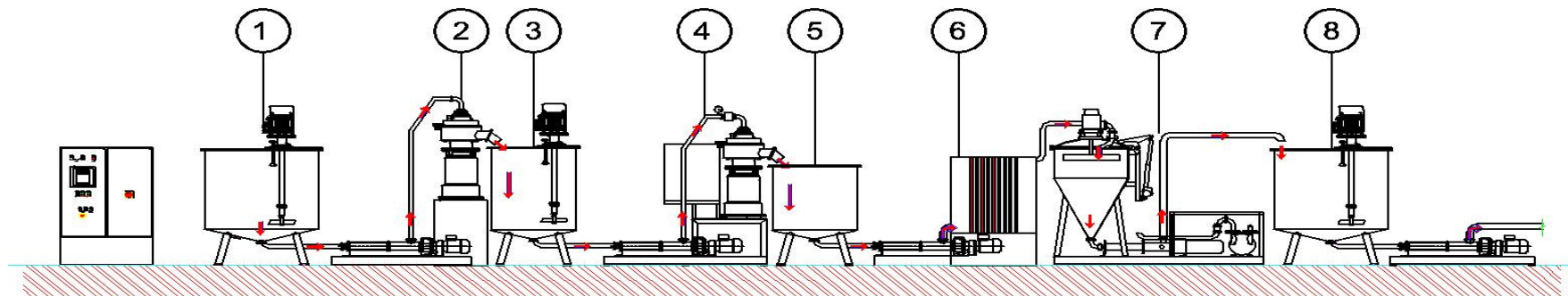
**K-MA**  
*process*

Applikations- und Verfahrenstechnik  
von Maschinenbau Kaltenbach GmbH

**KALTENBACH**

vielseitig · leistungsstark · kompetent

## Mustard line



**Wet mills**  
TYPE K-MT



**Mustard lines – Available types**

Line type	Pre-grinding mill	Fine grinding mill	Cooling unit	Vacuum de-aerator	Capacity min./max. approx. kg/h
<b>K-SL 400</b>	1 x K-MT 120	1 x K-MT 4P	K3	K-VE 2	150-400
<b>K-SL 600</b>	1 x K-MT 120	1 x K-MT 5P	K5	K-VE 3	450-900
<b>K-SL 1200</b>	1 x K-MT 160	2 x K-MT 5P	K10	K-VE 4	1,000-1,800

## Wet mills TYPE K-MT

**K-MA**  
*process*  
Applikations- und Verfahrenstechnik  
von Maschinenbau Kaltenbach GmbH

  
**KALTENBACH**  
vielseitig · leistungsstark · kompetent

## Our references



Our machines and plants are used worldwide in international well-known groups and firms.