

Digi TransPort® WR Family

3G/4G Enterprise Class Cellular Routers

Flexible, enterprise class cellular routers for remote and mobile networking applications.



Overview

The Digi TransPort WR family of 3G/4G cellular routers offers an all-in-one mobile communications solution with true enterprise class routing, security and firewall. These multifunction cellular routers feature a flexible design with optional integrated Wi-Fi access point (with multi SSID) / client, USB, serial, VDSL, 1-, 2- or 4-port Ethernet switch with VLAN. Additional configuration options include multiple serial ports (async or sync), GPS or telemetry I/O.

The Digi TransPort family offers an advanced routing, security and firewall feature set including stateful inspection firewall and integrated VPN. Enterprise class protocols incorporate BGP, OSPF and VRRP+, a patented technology built upon the popular VRRP failover standard providing true auto-sensing, auto-failure and auto-recovery of any line drop.

Digi TransPort WR routers are ideal for transportation, POS, energy, medical, financial and digital signage as well as cellular backup and remote device connectivity applications.

Digi management solutions provide easy setup, configuration and maintenance of large installations of remote Digi TransPort devices. Device Cloud by Etherios™ offers web-based device management for remote Digi cellular routers and gateways. Also available is the Windows based Digi Remote Manager™ for customer installed device management and reporting.

Related Products



VPN Concentrators

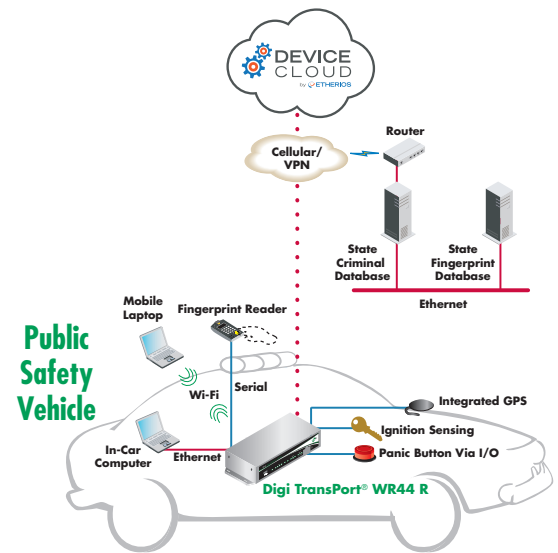


Digi Remote Management



Accessories

Application Highlight



Features/Benefits

- Enterprise class cellular routers with advanced dynamic routing, security and firewall features
- High speed GSM and CDMA 3G/4G/LTE cellular
- Optional integrated Wi-Fi access point and multiport Ethernet switch
- Flexible interfaces including serial (async/sync), GPS, VDSL, USB, CAN Bus and telemetry I/O, with flexible DC power options
- Powerful integrated end user programming
- Remote Management via windows remote management software or cloud hosted Device Cloud



Specifications

Digi TransPort® WR44 RR

Digi TransPort® WR44/WR44 R

Digi TransPort® WR41

Digi TransPort® WR21

Wireless Interfaces

WWAN**			
LTE - Verizon (L2)	700 MHz (Band 13); 2G/3G fall back to CDMA 850/1900 MHz; Transfer rate (max): 50 Mbps Up, 100 Mbps Down		
LTE - AT&T (L3)	700 MHz (Band 17) / AWS; 3G fall back to HSPA 850/AWS/1900/2100 MHz; 2G fallback to 850/900/1800/1900 MHz; Transfer rate (max): 50 Mbps Up, 100 Mbps Down		
LTE - EMEA (L4)	800/900/1800/2100/2600 MHz; 3G fall back to HSPA+ 900/2100 MHz; 2G fallback to 900/1800/1900 MHz		
HSPA+ (U9)	850/900/1700 (AWS)/1900/2100MHz; Transfer Rate (max): 5.76 Mbps Up, 21 Mbps Down		
GSM/CDMA Gobi (U8)	GSM and CDMA supported on the same module via Gobi diversity; UMTS/HSPA/HSPA+ (850/900/1700 AWS/1800/1900/2100 MHz with Rx Diversity); EV-DO Rev A (800/1900 MHz with Rx Diversity); Transfer Rate (max): 5.76 Mbps Up, 14.4 Mbps Down		
Edge (E1)	N/A	GPRS/EDGE Class 10; 850/900/1800/1900 MHz; Transfer rate (max): 236 Kbps Up/Down	
CDMA EV-DO (Dx)	N/A	450 MHz; EV-DO Rev B; R-UIM support; Transfer rate (max): 14.7 Mbps Up; 5.4 Mbps Down	
CDMA 1xRTT (Bx)	N/A		800/1900 MHz; Transfer rate (max): 153 Kbps up/down
Connector	2 x 50 Ω TNC (Center pin: female)	U8, Lx variants: 2 x 50 Ω SMA (Center pin: female); E1, Dx, Bx variants: 1 x 50 Ω SMA (Center pin: female)	
SIM Slots	2		
SIM Security	SIM slot cover plate	SIM slot cover plate included with WR44 R; Optional on WR44	Optional SIM slot cover plate

Wi-Fi*			
Standard	802.11b/g/n	Option of 802.11b/g or 802.11b/g/n	
Modes	Access point, Client and support for multiple SSID		
Transmit Power	17 dBm ± 2 dBm	20 dBm + 1.0/-1.5 dBm	17 dBm ± 2 dBm
Receive Sensitivity	54 Mbps OFDM, 10% PER, -70 dBm, 11 Mbps CCK, 8% PER, -83.5 dBm	54 Mbps / <-72 dBm and 11 Mbps / -90 dBm	54 Mbps / -70 dBm and 11 Mbps / -83.5 dBm
Security	Open or shared key authentication; WEP (64- and 128-bit) encryption; WPA/WPA2 with RADIUS (WPA Enterprise and pre-shared keys)		
Connectors	2 x 50 Ω RP-TNC (Center pin: male)	2 x 50 Ω RP-SMA (Center pin: male)	

GPS*			
Channels	50		
Sensitivity	-163 dB		
Protocol	NMEA 0183 V2.3 sentence output; +3.3 VDC active antenna drive; NMEA stream to local serial port or over TCP/IP		
Navigation	Galileo ready		
Augmentation	SBAS		
Cold Start	< 27 seconds TTFF (90%)		
Horizontal Accuracy	< 2.5 meters (90%)		
Velocity Accuracy	0.1m/s		
Connector	1 x 50 Ω RP-TNC (Center pin: male)	1 x 50 Ω SMA (Center pin: female)	
Additional Features	Send GPS via UDP/IP, TCP/IP (up to two destinations) or serial; Customize and/or send data using Python; GPS status query; Time source capable		

Other			
XBee	N/A		
Satellite	N/A		

Wired Interfaces

Serial			
Ports	1	1; Expansion cards available to increase serial ports	1
Standard	RS-232	RS-232; Expansion cards available in RS-422/485	Option of RS-232 or RS-232/422/485
Async/Sync	Async	Async; Expansion cards available in sync	Async
DTE/DCE	DCE		
Signal Support	TXD, RXD, RTS, CTS, GND	TXD, RXD, RTS, CTS, DTR, DCD, DSR, RI	TXD, RXD, RTS, CTS, DTR, DCD, DSR, RI
Flow Control	Software (XON/XOFF), Hardware supported		
COM Port Redirector	RealPort®		
Connector	5-pin A-coded M12 female	DB-9 female	RJ-45 DB-9 female

* Optional hardware

** Transfer rates are theoretical and network operator dependent

*** Reduced cellular performance may occur outside of -20° C to +60° C. Standard temperature power supplies may reduce temperature range.

Specifications

Digi TransPort® WR44 RR

Digi TransPort® WR44/WR44 R

Digi TransPort® WR41

Digi TransPort® WR21

Wired Interfaces (Continued)

Ethernet			
Ports	4	1	Option of 1 or 2
Standard/Physical Layer	IEEE 802.3; 10/100 Base-T		
Data Rate/Mode/Interface	10/100 Mbit/s; Full or Half duplex; Auto MDI/MDIX		
Connector	Option of 4-pin D-coded M12 female or 8-pin A-coded M12 female	RJ-45	

I/O			
Digital I/O	Input 4 - 28 VDC / Output: 28 VDC 50 mA max	Extended temperature variants: Input 4 - 28 VDC / Output: 28 VDC 50 mA max	N/A
Connector	4-pin A-coded M12 Male (2 pins are used for I/O; the other 2 pins are used for DC Power)	4-pin Molex (1 pin for input; 1 pin for I/O; the other 2 pins are used for DC power)	Extended temperature variants: 4-pin Molex (2 pins are used for I/O; the other 2 pins are used for DC power)

USB			
Ports	N/A	1	
Standard		USB 2.0	USB 1.0
Signaling		Full- or low-speed	
Connector		Type A	

DSL*			
Technology	N/A	VDSL2, ADSL2+, ADSL2, ADSL	N/A
Standard		Option of Annex A/M or B	
Connector		RJ-11	
Protocol	N/A	RFC 2364 PPPoA, RFC 2516 PPPoE, RFC 2684 Bridged Ethernet, RFC 1483 Routed IP (all either LLC or VC-Mux); PPP and ATM PVC support	N/A

Other			
Expansion Cards	N/A	Optional expansion cards available for GPS, fleet, telemetry (digital/analog I/O), ISDN/PSTN, serial and DialServ. See page 5 for more information.	N/A

Software/Management			
Remote Management	Device Cloud (cloud based); Digi Remote Manager™ (user installed/managed); SNMP v1/v2c/v3 (user installed/managed)		
Local Management	Web Interface (HTTP/HTTPS); CLI (Telnet, SSH, SMS, Serial port)		
Management/Troubleshooting Tools	FTP, SFTP, SCP, Protocol Analyzer with PCAP for Wireshark, Event Logging with Syslog and SMTP, NTP/SNTP		
Programming Tools/Environments	Python, DIA, Digi ESP™		
Software Packages (See page 4 for details)	Enterprise	Option of Standard or Enterprise	
Memory	128 MB NAND Flash/64 MB DDR2 SDRAM	64 MB RAM, 32 MB NOR Flash	128 MB NAND Flash/ 128 MB DDR2 SDRAM

Power			
Input	9 - 36 VDC	8-48 VDC	9-30 VDC
Consumption	15W max, 8.5W typical		6W max, 4W typical
Connector	4-pin A-coded M12 male (2 pins are used for power; the other 2 pins are used for I/O)	Locking barrel and 4-pin terminal block	Locking barrel or 4-pin terminal block (extended temperature models only)
DC Power Cord*	4-pin A-coded M12 female to bare wire	Locking barrel to bare wire or 4-pin connector to bare wire	
DC Power Supply*	(P/N: 76000917) 100W, 24 VDC output, 67-143 VDC input, EN50155 compliant; (P/N: 76000918) 400W, 14.2 VDC output, 40-100 VDC input, EN50155 and S-5702 compliant	100-240 VAC 50/60 Hz; Option of standard temperature or extended temperature	
Battery Backup	None		

* Optional hardware

** Transfer rates are theoretical and network operator dependent

*** Reduced cellular performance may occur outside of -20° C to +60° C. Standard temperature power supplies may reduce temperature range.

Specifications

Digi TransPort® WR44 RR

Digi TransPort® WR44/WR44 R

Digi TransPort® WR41

Digi TransPort® WR21

Physical				
Dimensions (L x W x H)	11.5 in x 6.65 in x 2.05 in (29.2 cm x 16.9 cm x 5.2 cm)	WR44: (non-DSL variants): 5.7 in x 8.3 in x 1.6 in (145 mm x 210 mm x 40 mm) WR44: (DSL variants): 5.7 in x 10.4 in x 1.6 in (145 mm x 264 mm x 40 mm) WR44 R: 5.5 in x 10 in x 1.9 in (140 mm x 254 mm x 48 mm)	4.7 in x 6.8 in x 1.3 in (120 mm x 173 mm x 32 mm)	3.9 in x 5.2 in x 1.3 in (100 mm x 131 mm x 32 mm)
Weight	5.7 lbs (2.6 kg)	WR44: (non-DSL variants): 1.98 lb (0.9 kg) WR44: (DSL variants): 2.25 lbs (1 kg) WR44 R: 2.4 lbs (1.1 kg)	1.27 lb (0.53 kg)	1.08 lb (0.49 kg)
Status LEDs	Power, LAN, Wi-Fi, Serial, WWAN (Link, Act, SIM), Signal Strength	Power, LAN, Wi-Fi, Serial/DSL, WWAN (Link, Act, SIM), Signal strength	Power, LAN, Wi-Fi, WWAN (Link, Act, SIM), Signal strength, Serial	Power, Service, WWAN, Signal strength
Material/Rating****	Aluminium Alloy/ IP54	WR44: Industrial (Metal)/ IP30 WR44 R: Aluminium Alloy/ IP30	Industrial (Metal)/ IP30	
Mounting	4x mounting slots on the unit's flange	WR44: Brackets for wall mount & DIN rail sold separately; WR44 R: 4x mounting slots on the unit's flange	Brackets for wall mount & DIN rail sold separately	Brackets for wall mount & DIN rail sold separately
Environmental				
Operating Temperature ***	-40° C to +75° C	Standard temp variants: 0° C to +40° C; Extended temp & WR44 R non-Wi-Fi variants: -40° C to +75° C; Extended temp & WR44 R Wi-Fi variants: -20° C to +75° C	Standard temp variants: 0° C TO 40° C Extended temp Wi-Fi variants: -10° C to +70° C Extended temp non-Wi-Fi variants: -25° C to +70° C	Standard temp variants: 0° C TO 40° C Extended temp variants: -35° C to +75° C
Storage Temperature	-40° C to +85° C			
Relative Humidity	0% to 95% (non-condensing) @ 25° C			
Ethernet Isolation	2 kV RMS	1.5 kV RMS		
Serial Port Protection (ESD)	10 kV	15 kV		
Hazardous (Class 1 Div 2)	N/A			Optional
Conformal Coating	Available upon request		N/A	
Approvals				
GSM/UMTS	PTCRB, NAPRD.03, GCF-CC, R&TTE, EN 301 511			
CDMA/EV-DO	CDG TIA/EIA-690, CDG TIA/EIA-98-E			
Cellular Carriers	Certified by most major carriers.			
Safety	UL 60950, CSA 22.2 No. 60950, EN60950			
Emissions/Immunity	CE, FCC Part 15 Class B, AS/NZS CISPR 22, EN55024, EN55022 Class B (WR44 models with VDSL are Class A)			
Industry	AAR S-5702, EN50155, AREMA C & H	E-Marking (72/245/EEC, 2009/19/EC): Automotive Non-Immunity (2004/104/ EC, 2005/49/EC, 2005/83/EC, 2006/28/EC); WR44R also includes: ISO7637-2 Class C, EN 300 019-2-5 (Specification for environmental tests for ground vehicle installations - covers temperature, humidity, vibration and shock)		N/A
Warranty				
Product Warranty	3 years	WR44: 5 years; WR44 R: 3 years	5 years	

* Optional hardware

** Transfer rates are network operator dependent

*** Reduced cellular performance may occur outside of -20° C to +60° C. Standard temperature power supplies may reduce temperature range.

****The enclosure rating is self-declared and has not been formally verified by an independent lab.

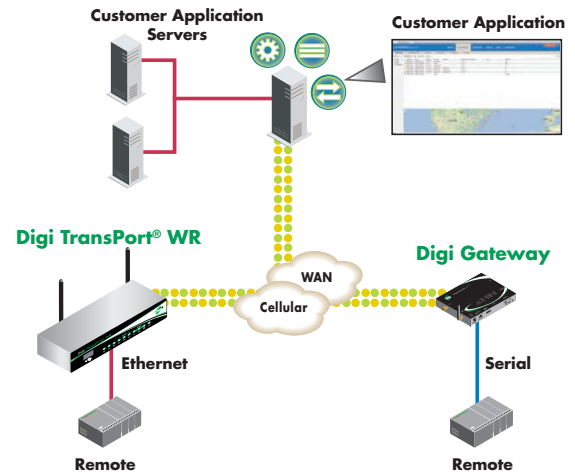
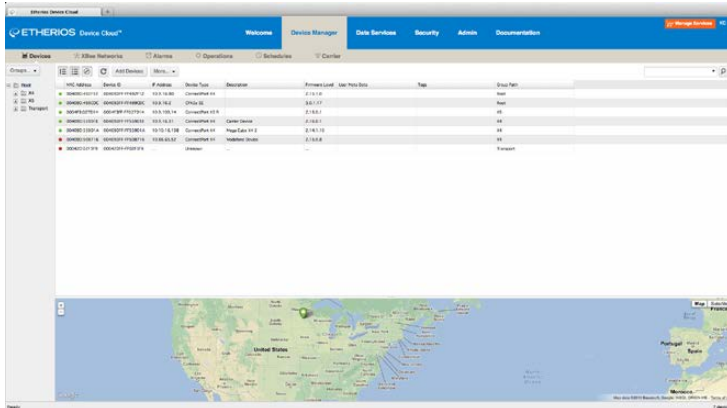
Software Packages	Enterprise	Standard
Protocols	Same as Standard plus Device Cloud; Dynamic DNS client compatible with BIND9/No-IP/DynDNS	HTTP, HTTPS, FTP, SFTP, SSL, SMTP, SNMP (v1/v2c/v3), SSH, Telnet and CLI for web management; remote management via software tool (option); SMS management, protocol analyzer, ability to capture PCAP for use with Wireshark; DynDNS
Security/VPN	Stateful inspection firewall with scripting, address and port translation; VPN: IPSec with IKEv1, IKEv2, NAT Traversal; SSL, SSLv2, SSLv3, FIPS 197, Open VPN client and server; PPTP, L2TP; VPN Tunnels: 5 included. Additional available: WR21 (5 max.), WR41 (50 max.), WR44/WR44R/WR44RR (200 max.); Cryptology: SHA-1, MD5, RSA; Encryption: DES, 3DES and AES up to 256-bit (CBC mode for IPsec); Authentication: RADIUS, TACACS+, SCEP for X.509 certificates; Content Filtering (via 3rd party); MAC Address Filtering; VLAN support; Ethernet Port Isolation	IP Filtering
Routing/Failover	IP pass-through; NAT, NAPT with IP Port Forwarding; Ethernet Bridging; GRE; Multicast Routing; Routing Protocols: PPP, PPPoE, RIP (v1, v2) OSPF, SRI, BGP, iGMP routing (multicast); IPv6 (firmware upgradable); RSTP (Rapid Spanning Tree Protocol); IP Failover: VRRP, VRRP+TM; Automatic failover/failback to second GSM network/Standby APN; Verizon NEMO/DMNR for Primary Wireless Access	IP pass-through; NAT, NAPT with IP Port Forwarding
Other Protocols	DHCP; Dynamic DNS client compatible with BIND9/No-IP/DynDNS; QoS via TOS/DSCP/WRED	DHCP; Dynamic DNS client compatible with BIND9/No-IP/DynDNS
Specialty/Legacy Protocols	RealPort®; Modbus UDP/TCP to serial; X.25 including XOT, SNA/IP, TPAD and PAD; Protocol switch*	RealPort®

Expansion Cards	Connector	Specification
Available for Digi TransPort WR41/WR44/WR44 R		
Sync/Async Serial Port (S1)		1 x DB-25 X.21/RS-422/RS-232 synchronous/asynchronous serial port
Async Serial Ports (A3)		3 x RJ-45 3 x asynchronous RS-232 serial ports
PSTN (P1)		1 x RJ-45 PSTN interface that can be used to dial out and receive calls. A PPP session is created over which IP traffic can be sent and received.
DialServ (P3)		1 x RJ-11 (FXS) Dial tone simulator to emulate local telco.
ISDN (I1)		1 x RJ-45 ISDN Basic Rate Interface (BRI) which can be configured either as a TE (terminal endpoint) or as NT-1 (network termination). The option also includes an additional asynchronous serial port.
ISDN-U/PSTN (I3)		1 x RJ-11, 1 x RJ-45 ISDN-U interface suitable for the USA plus PSTN interface. Can be configured for Bell-103 modulation in leased line mode as well as a normal PSTN interface.
Telemetry 1 (T1)		1 x 14-pin terminal block 4 x Opto-isolated digital output ports and 1 x Opto-isolated digital input port. It also provides a relay I/O port, voltage monitoring port, and internal temperature monitoring. Fully programmable via Python for embedded Digi TransPort applications.
Telemetry 2 (T2)		1 x 14-pin terminal block 4 x Analog and 4 x Digital I/O ports fully programmable via Python for embedded Digi TransPort applications.
GPS (G1)		1x SMA Fully-integrated GPS tracking. See main specifications area for details.
Fleet (F1)		1 x 4-pin, 1 x 15-pin, 1 x SMA Flexible transportation/fleet focused applications requiring CAN bus, J1708, GPS, Non-isolated digital I/O, Ignition Sense, 3-Axis accelerometer, and power control of Digi TransPort interfaces. Fully programmable via Python for embedded Digi TransPort applications.

Device Management Features

- View of all remote devices and their connection status
- Automatic registration of newly connected devices
- Remote device configuration
- Actions include device grouping and scheduling of operations
- Monitoring of user specified events
- Device statistic and report generation
- Alarm generation and alerting
- Secure access to all devices from web browser, anywhere
- Remote reboot of device and default reset
- Remote device management with Device Cloud

Easy Remote Configuration and Management

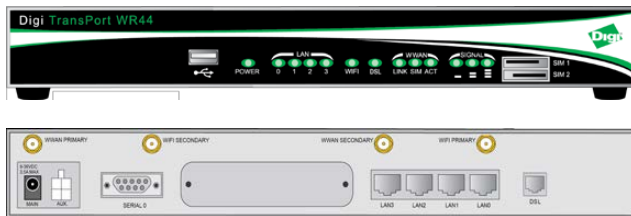


Product Images

Digi TransPort WR44 RR



Digi TransPort WR44 (DSL variant)



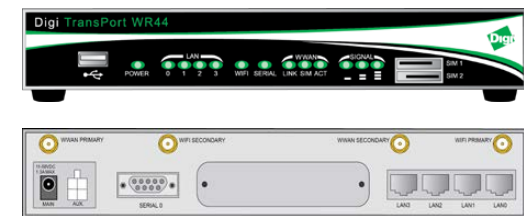
Digi TransPort WR21



Digi TransPort WR41



Digi TransPort WR44/WR44 R



Visit www.digi.com for part numbers.

DIGI SERVICE AND SUPPORT - You can purchase with confidence knowing that Digi is here to support you with expert technical support and a strong five-year warranty. www.digi.com/support

**Digi International
Worldwide HQ**

877-912-3444
952-912-3444

**Digi International
France**

+33-1-55-61-98-98
www.digi.fr

**Digi International
Japan**

+81-3-5428-0261
www.digi-intl.co.jp

**Digi International
India**

+91-80-4287-9887

**Digi International
Singapore**

+65-6213-5380

**Digi International
China**

+86-21-5150-6898
www.digi.cn

BUY ONLINE • www.digi.com

© 2009-2014 Digi International Inc. All rights reserved. Digi, Digi International, Etherios, the Digi logo, the Device Cloud by Etherios logo, Digi Remote Manager, Digi TransPort, Device Cloud by Etherios and RealPort are trademarks or registered trademarks of Digi International Inc. in the United States and other countries worldwide. All other trademarks are the property of their respective owners. All information provided is subject to change without notice.

info@digi.com



91001613
E10/214