

# WHITELAND

ENGINEERING LTD



YOU DESIGN **IT**  
WE MAKE **IT**



## Sub Contract Machining Specialists

PRECISION SUB-CONTRACT MECHANICAL ENGINEERING, MACHINING SERVICES, INCLUDING CNC MACHINING, TOOLMAKING AND SPECIALISED MECHANICAL ASSEMBLIES, ALL TO CUSTOMER SPECIFICATIONS.



# Whiteland Engineering Ltd

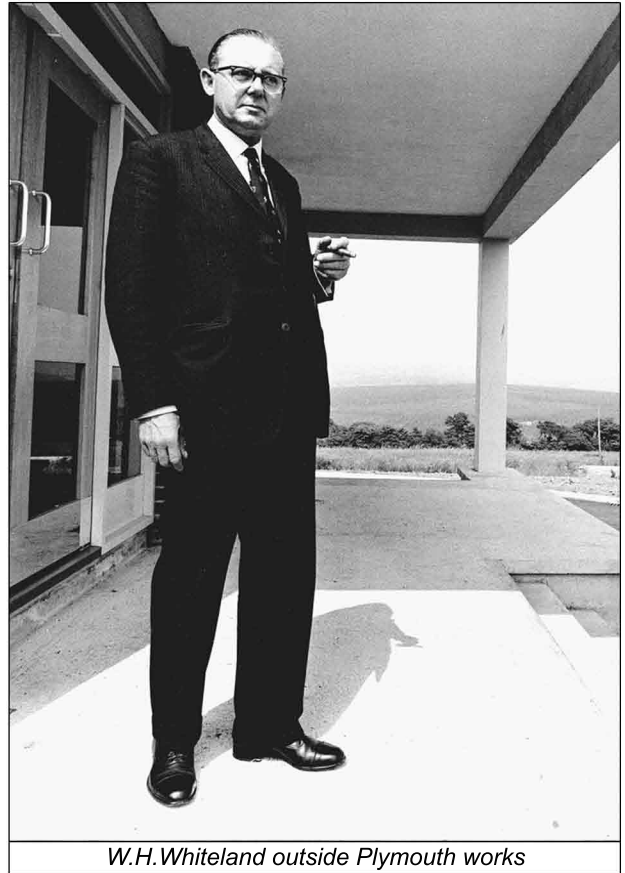
Whiteland Engineering Ltd, Since 1956...

Whiteland Engineering Ltd was founded in 1956 by Walter Hanson Whiteland and over 50 years later is still a family run business with the third generation maintaining the family tradition.

The company initially designed and built Special Purpose Machines, so it is well aware of the accuracy required to manufacture high tolerance components. The company now concentrates its efforts in the field of sub-contract machining services, toolmaking, precision components and mechanical assemblies for firms and organisations with their own range of products.

Over the years we have worked on many different projects, servicing a variety of industries including the following:- M.O.D., Printing and Packaging Manufacturers, Rail, Automotive, Oil & Gas, Alternative Power Generation, Pumps & Compressors, Aerospace, Marine, Medical, Motor Sport, Tobacco and Specialised Vehicle Builders.

Our company has a well equipped machine shop and is always looking to expand and upgrade its facilities by investing in the latest high technology equipment. Together with a highly skilled work force of approximately 30 employees, the company is well placed to develop future business opportunities.



*W.H. Whiteland outside Plymouth works*



*The "WELMATIC"*

The inspection facilities reflect the importance the company gives to this key part of the manufacturing process. It can boast a fully equipped inspection area with a 3-axis co-ordinate measuring machine as the centre-piece.

The company is a member of the "Gauge & Toolmakers Association" and is a fully accredited ISO 9001 company which is approved by Lloyd's Register Quality Assurance Limited.

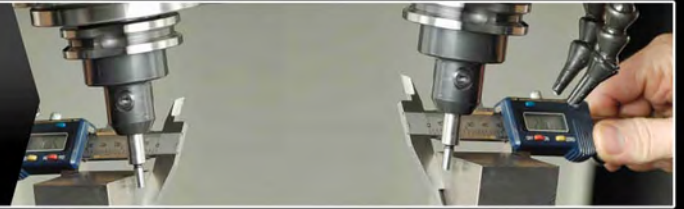
The SC21 journey is well under way with a commitment to improve and sustain levels of performance throughout the company. The defence and aerospace industries see SC21 as a class-leading standard, creating supply chain excellence.

Our core objective is customer satisfaction "By producing the right product, at the right price, at the right time".

D.W. Whiteland  
Chairman

# Our Philosophy

About The Services We Provide...



Whiteland Engineering Ltd prides itself on building and evolving relationships with all our suppliers and customers, this ensures the continued growth of our business.

Our professionalism coupled with a sound grasp of advances in machining technology allows us to deliver a world class solution.

We don't just produce parts we provide an engineering support service to help you develop the best component solution for your business. We believe that we have all the attributes to deliver a complete engineering service.

Our skilled machinists have experience of working in a wide variety of materials including steel, stainless steel, aluminium, brass, phosphor bronze, cast iron and various other materials, providing bespoke parts for a multitude of industries.

We can supply one-off precision machined prototypes through to volume production.

We offer reduced lead times to support your business, due to flexible working arrangements and our own transport facilities.



We support the following industries:

- Aerospace
- Alternative Energy
- Defence
- Marine
- Medical
- Motor Sport
- Oil & Gas
- Printing & Packaging
- Pumps & Compressors
- Rail
- Tobacco



Our services include:

- Precision machining in large and small batches
- Specialised mechanical assemblies including hydraulic & pneumatic units
- Special purpose machine tool components
- Complete assemblies of jigs, tools & fixtures of all types including gauges
- Workshop plant repairs
- Spares for various types of machinery
- Reverse engineering & manufacture complete to customer specification
- Component inspection:
  - First Article Inspection Reports (FAIR)
  - 100% inspection

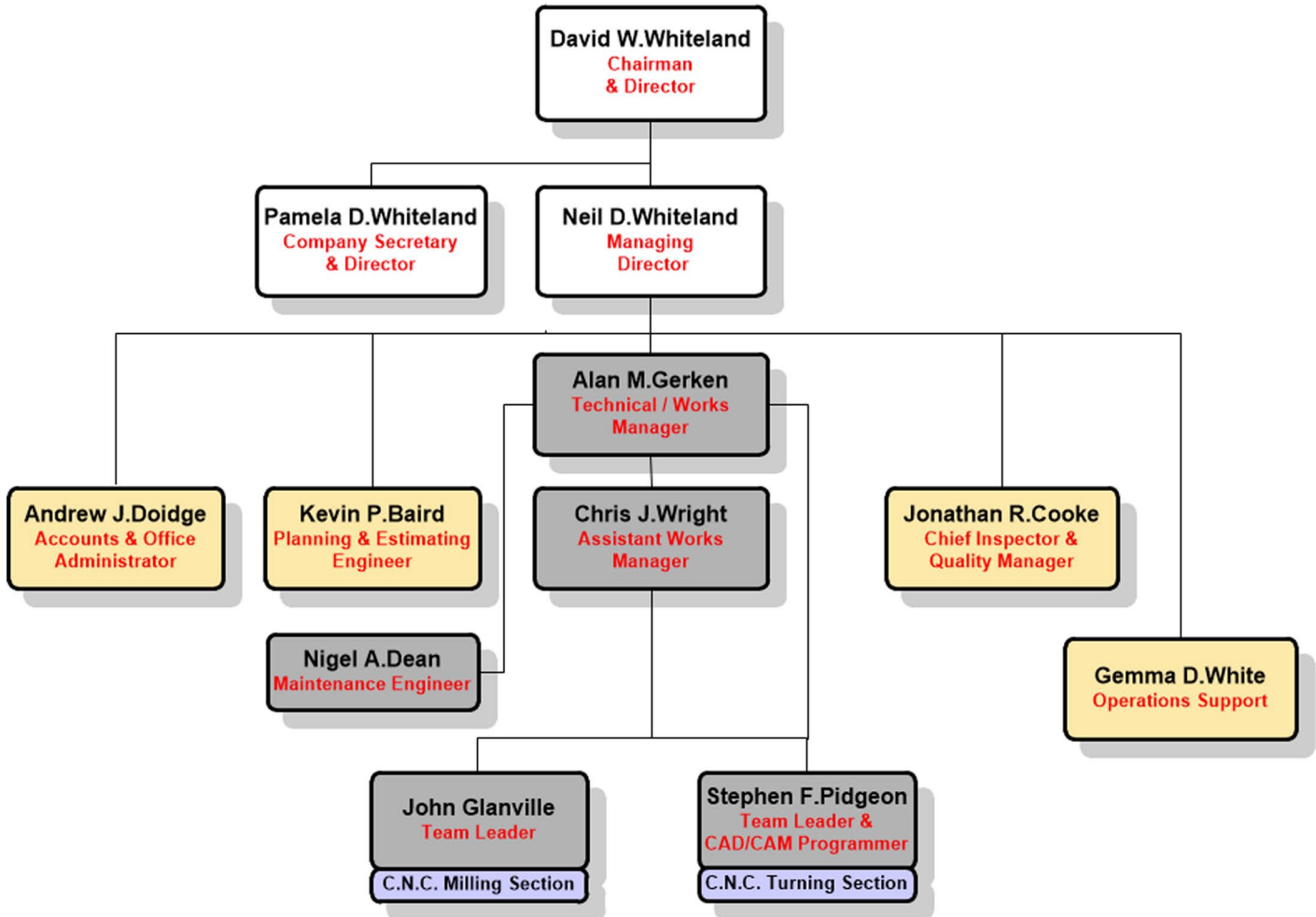
**WHITELAND**  
ENGINEERING LTD

# The Organisation

Whiteland Engineering's Hierarchy



The Whiteland Engineering Ltd organisation is divided into three classifications: Directors, Production and Support. The diagram below shows how the organisation functions and highlights the roles played by the key employees amongst our valued team.



## KEY:



Directors



Production



Support

**WHITELAND**  
ENGINEERING LTD



# CNC Machining

Computer Numerically Controlled



Whiteland Engineering Ltd has over 30 years of CNC machining experience and has worked with a wide variety of materials including steel, stainless steel, aluminium, brass, phosphor bronze, cast iron and various other materials.

Recently we have installed new 3 and 4th axis Hurco CNC machining centres. These have now given us the capability of 3D mould and ergonomic shapes which has brought Whiteland Engineering to the cutting edge of technology enabling us to be even more competitive in the marketplace. These CNC machining centres are fitted with the latest part probing and laser probing.

Whiteland Engineering is also skilled in CNC Turning, CNC Grinding, Cylindrical Grinding and Prototrak Milling.

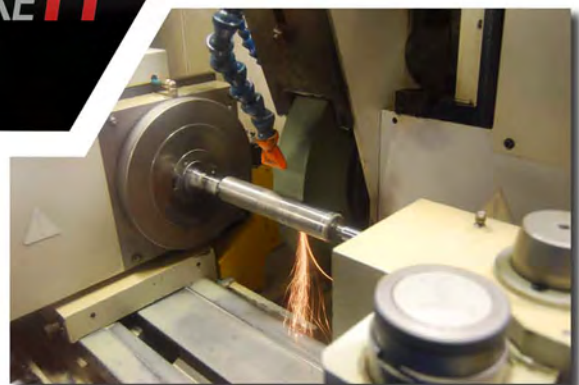
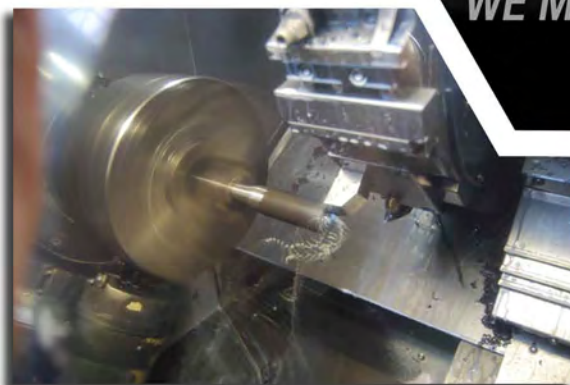
Our latest investment is a new XYZ Protturn SLX555 Lathe which has a 560mm swing, 1,750mm between centres and a 780mmØ face plate.

We can also design and manufacture jigs as necessary to facilitate the required work holding for specific components or extrusions.

We pride ourselves on delivering world class machining services specialising in high end precision components. Whatever your requirement, we will ensure the method of manufacture is efficient and optimised.



YOU DESIGN  
WE MAKE IT



Whiteland Engineering Ltd can offer all of the following services:

- CNC Milling
- CNC Turning
- CNC Cylindrical Grinding
- Fabrications
- Assembly
- Fitting
- Conventional Turning
- Conventional Milling
- Conventional Cylindrical Grinding
- Conventional Surface Grinding
- Drilling
- Honing

**WHITELAND**  
ENGINEERING LTD

# Machines And Capabilities

Whiteland Engineering's Machine List And Maximum Dimensions



MILLING

<b>C.N.C. MACHINING</b>	<p><b>Hurco VMX60m</b> - Bed Type Machining Centre, 24 A.T.C. with a WinMax Control Complete with 4th Axis Hurco CNC 320mmØ Rotary Table - 1,500mm x 660mm x 610mm (59" x 26" x 24")</p> <p><b>Hurco VMX50m</b> - Bed Type Machining Centre, 24 A.T.C. with a WinMax Control Complete with 4th Axis Hurco CNC 320mmØ Rotary Table &amp; Through Coolant Spindle. 1,270mm x 660mm x 610mm (50" x 26" x 24")</p> <p><b>Hurco VMX42m</b> - Bed Type Machining Centre, 24 A.T.C. with a WinMax Control 1,066mm x 610mm x 610mm (42" x 24" x 24")</p> <p><b>Hurco VM10i</b> - Bed Type Machining Centre, 20 A.T.C. with a WinMax Control 760mm x 400mm x 500mm (30" x 16" x 20")</p> <p><b>Mazak VTC 20B</b> - Bed Type Machining Centre, 24 A.T.C. with a Mazatrol M Plus Control Complete with 4th Axis Nikken CNC 250mmØ Rotary Table - 1,120mm x 510mm x 510mm (44" x 20" x 20")</p> <p><b>Beaver Partsmaster</b> - Bed Type Machining Centre - 16 A.T.C. with a Heidenhain TNC 355 Control 510mm x 400mm x 400mm (20" x 16" x 16")</p>
<b>C.N.C. VERTICAL</b>	<p><b>XYZ Prototrak SM5000</b> - 3 Axis Bed Mill - 1,500mm x 596mm x 584mm (59" x 23.5" x 23")</p> <p><b>XYZ Prototrak SMX4000 (x2)</b> - 3 Axis Bed Mill - 1,016mm x 508mm x 584mm (40" x 20" x 23")</p> <p><b>XYZ Prototrak SMX3500</b> - 3 Axis Bed Mill - 770mm x 500mm x 420mm (30" x 19 1/2" x 16 1/2")</p> <p><b>XYZ Prototrak PRO3000/KRV3000</b> - 2 Axis Turret Mill 1,016mm x 400mm x 400mm (40" x 16" x 16") Slotting capabilities - 100mm x 910mmØ (4" x 36"Ø)</p>
<b>HORIZONTAL</b>	<p><b>VILH Pedersen</b> - 1,150mm x 293mm x 435mm (45" x 12.5" x 17") with D.R.O.</p>

TURNING

<b>C.N.C.</b>	<p><b>Mazak Quick Turn NEXUS 250-2</b> - 350mmØ x 1,000mm centres (13.8"Ø x 39.8")</p> <p><b>Mazak Quick Turn 28N</b> - 320mmØ x 1,000mm centres (12.6"Ø x 39.8")</p> <p><b>Mazak Super Quick Turn 250</b> - 350mmØ x 480mm centres (13.7"Ø x 19.9")</p> <p><b>Mazak Quick Turn 15N</b> - 250mmØ x 510mm centres (10"Ø x 20")</p> <p><b>Proturn SLX555</b> - 560mm swing x 1,750mm centres &amp; 780mmØ face plate (22" x 69" x 31")</p>
<b>CONVENTIONAL</b>	<p><b>Harrison V390</b> - 250mm swing x 1,000mm centres &amp; 355mmØ face plate (10" x 40" x 14")</p>

GRINDING

<b>C.N.C. CYLINDRICAL</b>	<p><b>Jones &amp; Shipman Suprema</b> 300mm swing x 650mm centres (12"x 25"), Max Diameter: 300mm (11.7")</p>
<b>CYLINDRICAL</b>	<p><b>Jones &amp; Shipman 1307</b> 355mm swing x 1,016mm centres (14"x 40"), Max Diameter: 355mm (14")</p> <p><b>Jones &amp; Shipman 1305</b> 254mm swing x 1,016mm centres (10" x 40"), Max Diameter: 254mm (10")</p> <p><b>Jones &amp; Shipman 1071</b> 152mm swing x 455mm centres (6"x 18"), Max Diameter: 152mm (6")</p>
<b>SURFACE</b>	<p><b>ROSA RTRC-1200</b> - Horizontal Spindle M/C 1,270mm x 710mm x 500mm (50" x 28" x 20")</p> <p><b>Jones &amp; Shipman 540L</b> - With Digital Opti-dress 457mm x 152mm x 354mm (18" x 6" x 14")</p>

OTHER

<b>OTHER FACILITIES</b>	<p>Comprehensive Fitting &amp; Assembly Area, Cutter Grinding, Vapour Blasting, Dot Peen Part Marking &amp; Small Component Washing Facility</p>
<b>FABRICATION</b>	<p>By Gas, Arc &amp; M.I.G. Welding, also Flame Cutting</p>

**WHITELAND**  
ENGINEERING LTD



# Inspection Facilities

Quality Inspection Control



Whiteland Engineering Ltd is committed to the quality of workmanship on every component it produces. This is achieved not only by the skills of the engineers who manufacture the items, but by the range of equipment available at their disposal in the inspection department.

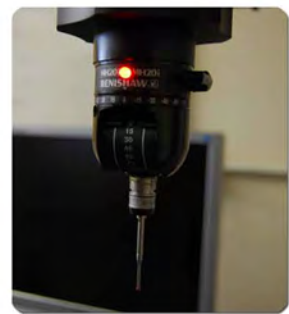
All items produced can be checked accurately and in their entirety to the drawing provided, using equipment ranging from the basic micrometers and slip gauges, to the advanced Axiom 3 Axis Co-ordinate Measuring Machine (CMM) and Trimos Vertical 3. The option of full inspection reports on any aspect of the component is available upon request.

Basic Inspection Capabilities Include:-

- Metric & Imperial Internal Micrometers up to 175mm (6.8")
- Metric & Imperial Depth Micrometers up to 300mm (11.8")
- Metric & Imperial Slip Gauges
- Range of Metric & Imperial Plug Gauges
- Thread Wires

Advanced Inspection Equipment:-

- Axiom Too Co-ordinate Measuring Machine - 640mm x 500mm x 900mm (25.1" x 19.6" x 35.4")
- Trimos Vertical 3 - Linear Measurement up to 1,100mm, Diameter up to 1,000mm
- Mitutoyo Vernier Caliper - 1,800mm (6')
- Taylor Hobson Surface Finish Comparator - 0.1 $\mu$ m to 10 $\mu$ m (0.3 $\mu$ in to 300 $\mu$ in)
- Shadowgraph
- Thread Measuring Parallels
- Gauges (including Screw Ring, Screw Plug & Caliper Thread (MM,BSF,BSP,UNC,UNF))



**WHITELAND**  
ENGINEERING LTD

# Questions And Answers

Your Frequent Asked Questions And Answers

Below are some questions that are frequently asked. If you would like to ask a different question or wish to make an enquiry, you can contact us via the following methods:

Telephone: +44 (0)1237 472203

Fax: +44 (0)1237 472205

Email: [enquiries@whitelandengineering.co.uk](mailto:enquiries@whitelandengineering.co.uk)

Website: [www.whitelandengineering.co.uk](http://www.whitelandengineering.co.uk)

**Q** We have noticed from your capabilities list that you do not supply gear cutting, heat treatment, finishing processes and other specialised machining processes. Are you able to provide these services as well?

**A** Yes, we are able to provide a finished part as we have a network of approved and preferred suppliers in all areas.

**Q** Are you able to provide 100% inspection on all parts produced with supporting documentation?

**A** Yes, we have a fully equipped Inspection Department which we utilise to your specific inspection requirements.

**Q** Are you able to manufacture quick turnaround work?

**A** Yes, we have the facility to offer this service.

**Q** Does our geographical location restrict us from using your services?

**A** No, we can deliver anywhere in the UK either by using our own vehicles or professional freight couriers. We also use Global Forwarding and Freight companies for international deliveries.

**Q** Can you give general advice on a new product design that we need manufacturing?

**A** Yes, we have over 50 years of general engineering experience and we are only too pleased to share our knowledge with you.

**WHITELAND**  
ENGINEERING LTD



# Whiteland Engineering Software Ltd

WHITELAND  
ENGINEERING SOFTWARE LTD

Whiteland Engineering Software Ltd was formed as a division of Whiteland Engineering Ltd. The company specialises in the supply of Enterprise Resource Planning (ERP) systems.

In 1998 the current Managing Director saw the need for a system to be designed and implemented in order to run the engineering business more efficiently and effectively. By employing and working alongside a team of software developers, the process is now complete. This highly sophisticated software suite competes with the best ERP systems on the market and is now being implemented in businesses throughout the UK. This advanced product has been called 'DATAHUB'.

As well as the DATAHUB system, Whiteland Engineering Software Ltd also supplies the following services:

- Bespoke Software Development
- Website Design & Development
- Hardware
- Software Installation
- Data Transfer
- Consultation

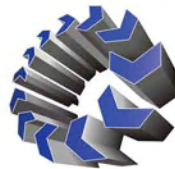


You can visit Whiteland Engineering Software Ltd on the web at [www.whitelandssoftware.co.uk](http://www.whitelandssoftware.co.uk)

**REDUCE COSTS**  
**IMPROVE PERFORMANCE**

## DATAHUB

Designed By Engineers For Engineers



**DATAHUB**<sup>™</sup>  
DESIGNED BY ENGINEERS FOR ENGINEERS

DATAHUB is the adaptable software solution for all businesses of any size. Our Enterprise Resource Planning (ERP) and Administration software is used to manage all aspects of your business, from planning through to accounting, offering a user-friendly functionality in all modules of the DATAHUB package.

Our developers provide all companies with the right tools to succeed. We are able to provide bespoke solutions to any business wanting a software system tailored to their own specification. Originally our software was designed to manage and control the sub-contract machining business of Whiteland Engineering Ltd.

Due to the success and the continued development of the engineering software, it is now being used in a range of industries outside the field of engineering.

DATAHUB helps users:

- Save Time
- Reduce Costs
- Build Better Relationships
- Increase Productivity
- Improve Performance & Profits

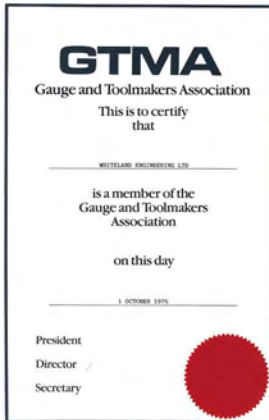
You can visit DATAHUB on the web at [www.wesldatahub.co.uk](http://www.wesldatahub.co.uk)

WHITELAND  
ENGINEERING LTD

# GTMA

Gauge And Toolmakers Association

# GTMA



GTMA members are companies involved in Design, Production, Measurement and Maintenance within the Gauge, Toolmaking and Precision Machining Industries encompassing:-

- Mould & Die Making
- Press Toolmaking
- Precision Machining
- Metrology
- Tooling Technologies
- Rapid Product Development

The GTMA works hard to deliver the best of UK Gauge, Toolmaking and Precision Machining expertise to industry as a whole, providing a focal point for technology transfer and benchmarking its members against overseas competition.

In partnership with its members, the GTMA offers a quality guarantee to buyers of toolmaking and associated services, in addition to support, information and networking opportunities.

Whiteland Engineering Ltd has been a member of the GTMA since October 1975; our first certificate can be seen in the image above.

You can find out more about the GTMA on the web by visiting [www.gtma.co.uk](http://www.gtma.co.uk)

# SC21

21st Century Supply Chains



Supply Chain 21 (SC21) is a change programme which aims to accelerate the competitiveness of the UK's defence and aerospace industry by raising the performance of its supply chains.

- SC21 provides an efficient & cost effective way of improving the performance of suppliers.
- SC21 compliments the objectives of the UK Government's Defence Industrial Strategy which recognises that the supplier networks need to be modernised.
- Defence Equipment & Support (DE&S) Directorate Supplier Relations (DSR) have recognised the role of SC21 as the leading improvement programme.
- Signatory companies commit to working collaboratively with peer customers to suppliers on three work streams to accelerate supply chain performance, remove duplication & lower overheads and costs.

Learn more about SC21 on the web by visiting [www.sbac.co.uk](http://www.sbac.co.uk)

**WHITELAND**  
ENGINEERING LTD





## CERTIFICATE OF APPROVAL

This is to certify that the Quality Management System of:

**Whiteland Engineering Ltd  
Bideford, Devon  
United Kingdom**

has been approved by Lloyd's Register Quality Assurance  
to the following Quality Management System Standards:

**ISO 9001:2008**

The Quality Management System is applicable to:

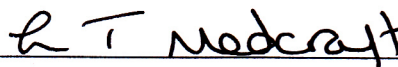
**Provision of subcontract mechanical engineering, machining  
services, including CNC machining, toolmaking  
and specialised mechanical assemblies,  
all to customer specifications.**

Approval  
Certificate No: LRQ 0961700

Original Approval: 16 July 1999

Current Certificate: 1 August 2011

Certificate Expiry: 31 July 2014

  
Issued by: Lloyd's Register Quality Assurance Limited

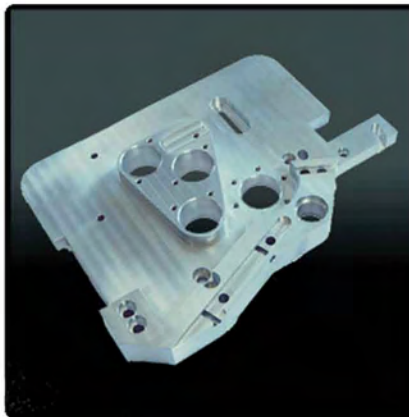


001

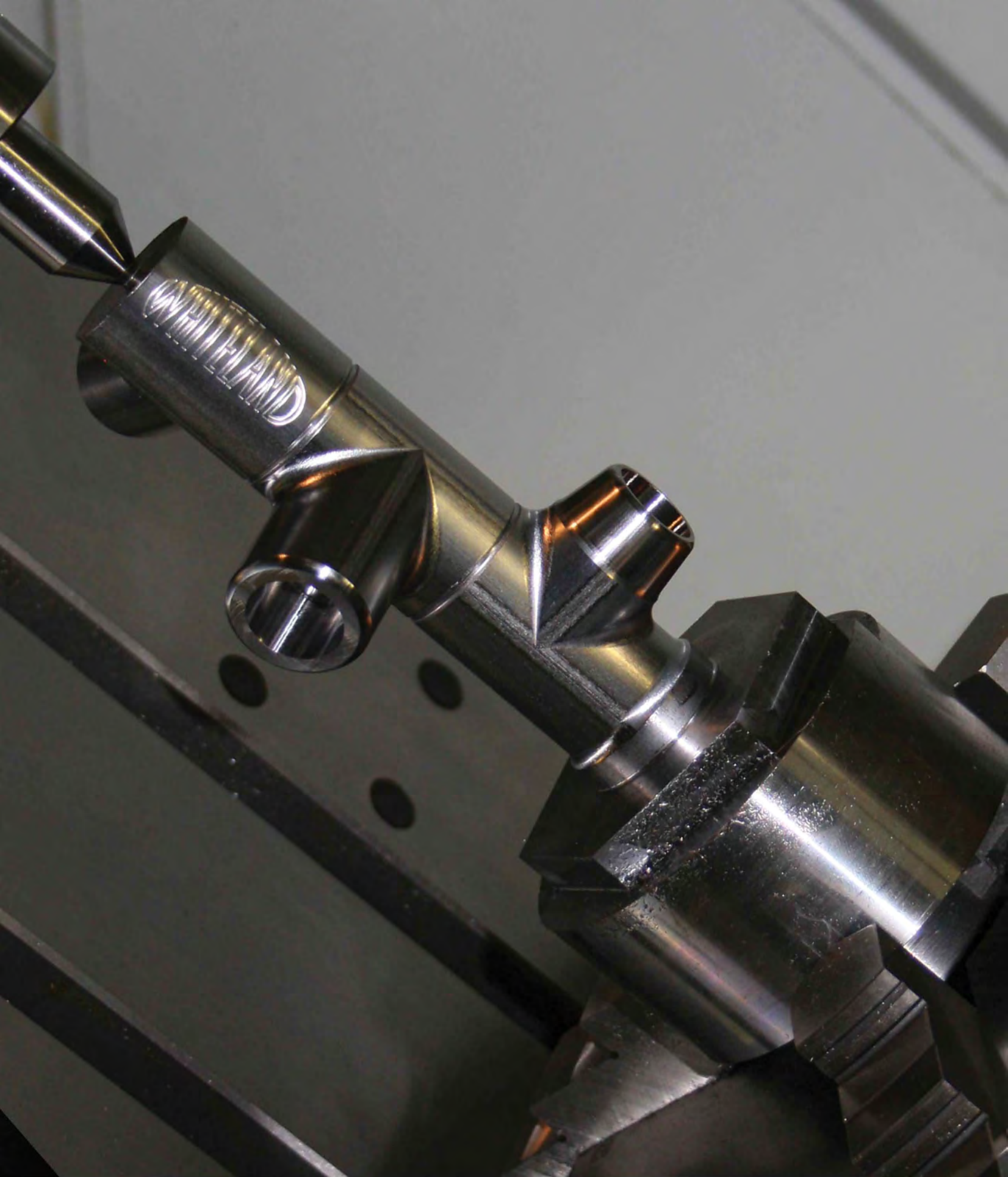
This document is subject to the provision on the reverse  
71 Fenchurch Street, London EC3M 4BS United Kingdom. Registration number 1879370  
This approval is carried out in accordance with the LRQA assessment and certification procedures and monitored by LRQA.  
The use of the UKAS Accreditation Mark indicates Accreditation in respect of those activities covered by the Accreditation Certificate Number 001  
Macro Revision 13

# Portfolio Of Work

A Selection Of Machined Components And Assemblies







[www.whitelandengineering.co.uk](http://www.whitelandengineering.co.uk)



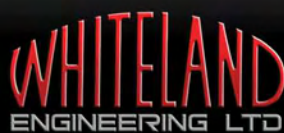
[enquiries@whitelandengineering.co.uk](mailto:enquiries@whitelandengineering.co.uk)



+44 (0)1237 472203



+44 (0)1237 472205



Torrington Lane, Bideford, Devon,  
England, EX39 4BH.

