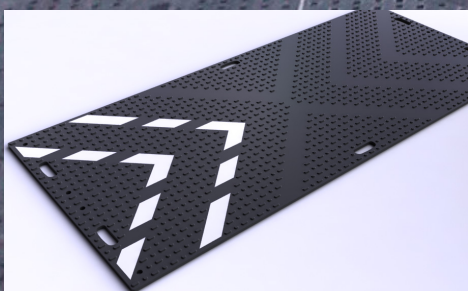


EuroMat®

Heavy Duty Temporary Access Mat



- » Fast and easy to install
- » Unique chevron traction® surface
- » Reversible low profile surface (optional)
- » Low transportation and handling costs
- » Minimises property, heritage and environmental damage
- » Supports health and safety objectives
- » Connection options for different ground conditions and equipment
- » Non-slip reflective markings and cats eyes for night safety (optional)

EuroMat®

Heavy Duty Temporary Access Mat



Heavy Duty Temporary Access Mats

Supporting loads up to 80 tonnes, EuroMat® is the ultimate heavy duty man-handleable mat for temporary roadways and work areas. EuroMat® is essential for the construction, civil engineering and ground work industries.

Incredibly Tough & Flexible

Made from tough 100% recycled or virgin high density Polyethylene (HDPE), EuroMat® is the market leader for temporary access and ground protection over soft or sensitive ground.

EuroMat® significantly reduces damage to heritage and eco-sensitive areas, avoiding the need for reinstatement once the project is complete.

Fast & Efficient Installation

Weighing just 35kg EuroMat® is ideal for both short and long term projects. Incorporating strategically positioned handholds, EuroMat® is man-handleable and easy to off load and deploy by a two man team.

Chevron Traction® Surface

EuroMat®'s chevron traction® surface comprises of a broken pattern of rugged nubs which substantially improves the grip and forward motion of plant or vehicles and reduces side way slippage, even in the most challenging weather or ground conditions.

Optional hi-vis markings and cats eyes can be incorporated into EuroMat® for additional safety at night

Logistics

Lighter in weight than conventional wood or steel alternatives, EuroMat® also offers the environmental benefit of more mats being loaded per wagon and in turn reducing transportation costs and carbon emissions.

*Compression tested at National Physical Laboratory, UK

Connection Systems

Standard 2 way / 4 way Urethane Connectors

Made from 100% Urethane, 2 and 4 way connectors are inserted from below and attached via M10 bolts. Connectors can be strengthened with a metal strap for projects where heavy vehicles or equipment are used, or on inclines or slopes

Fast Fit Connectors

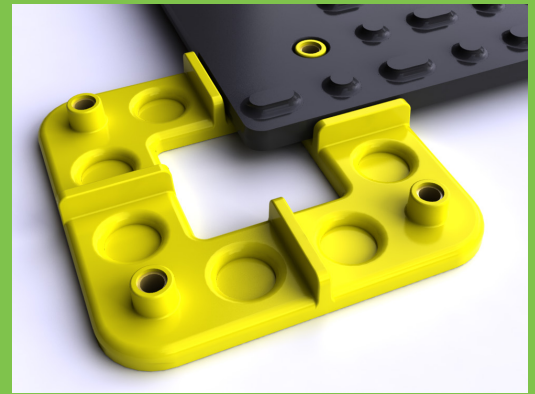
Used on short term projects where speed of installation is of the essence. The connector is simply pushed through the holes and then underneath the mats

Flex Connectors

Installed in the same way as 2 or 4 way connectors the 'flex' connectors should be used where there is highly undulating ground.

Metal U-pin

Metal U-pin connectors should be used in conjunction with other connectors when EuroMat®s are installed on inclines or slopes



Applications

- » Construction, civil engineering and ground work
- » Pedestrian walkways
- » Emergency access routes
- » Temporary roadways and car parks
- » Utilities and infrastructure maintenance
- » Landscaping and protection of heritage or eco-sensitive areas
- » Golf course and sports field maintenance
- » Sports and leisure events

Technical Product Information

For use as a technical guide only

EuroMat® Heavy Duty Temporary Access Mat

Material:	100% recycled or virgin High Density Polyethylene (HDPE)
Size:	2410mm x 1200mm x 12mm
Weight	35kg

	Unit	HDPE
Mechanical Properties		
Tensile strength	MPa	23 - 26
Flexural strength	MPa	25 - 28
Flexural modulus	MPa	1936 - 1967
Charpy Notched Impact Strength	kJ/m ²	5 - 6
Poisson's ratio	(theoretical)	0.35 - 0.38
Compression testing (max value before test terminated)	Tonnes	250
General Properties		
Density	kg/m ³	940 - 965
Shrinkage	%	2 - 4
Water absorption	%	0.01
Thermal expansion	e-6/K	110 - 130
Thermal conductivity	W/m.K	0.46 - 0.52
Specific heat	J/kg.K	1800 - 2700
Melting temperature	°C	108 - 134
Glass temperature	°C	-110 - -110
Service temperature	°C	-30 - +85
Resistivity	Ohm.mm ² /m	5e+17 - 1e+21
Breakdown potential	kV/mm	17.7 - 19.7
Dielectric loss factor		0.0005 - 0.0008
Friction coefficient		0.25 - 0.30
Refraction index		1.52 - 1.53

zigma[®]
Ground Solutions
 The fast and safe way forward

Health and Safety Information

General

Critical hazards to man and environment	None
Environment	The disposal of the material presents no danger regarding toxicological or ecological considerations. Due to low water solubility, bio-availability unlikely.
Solubility in water	Insoluble
Regulatory	Not classified as hazardous under transport regulations.

Safety Properties

Melting point	Crystalline Melt Temperature 108- 134°C
Ignition temperature	> 360°C
Thermal decomposition	> 390°C
Stability and reactivity	No possibility of degradation under normal circumstances. Degradation will only occur above the decomposition temperature.
Toxicology	Not harmful to health under normal conditions.

EuroMat® is available for worldwide sale or hire through our official distributors and agents - please contact us for further details.

UK Head Office:
 Tel: +44 (0) 8456 435 388

Unit 11, M11 Business Link,
 Parsonage Lane, Stansted,
 Essex CM24 8GF. UK

Sales office - Ireland:
 Tel: +353 (0) 91 766 878

Sales office - US:
 Tel: +1-601-826-3885

sales@zigmagroundsolutions.com
 www.zigmagroundsolutions.com

*Load performance depends on ground conditions as well as the weight and type of vehicles and plant. Zigma® Ground Solutions Ltd, its agents or employees are not liable for any damage to existing ground or property through use of EuroMat®. The sale or hire of all temporary access mats are subject to Zigma® Ground Solutions' standard Terms and Conditions. These are available from our website www.zigmagroundsolutions.com or by telephoning our sales office.