

# TuffTrak<sup>®</sup>

## Heavy Duty Road Mat



- » Heavy Duty Road Mat
- » Incredibly Tough & Flexible
- » Unique Dual Grip Capability
  - Chevron traction<sup>®</sup> surface
  - Low profile traction

Depicts high profile  
Chevron Traction<sup>®</sup> surface

**zigma**<sup>®</sup>  
Ground Solutions  
The fast and safe way forward



# TuffTrak<sup>®</sup>

## Heavy Duty Road Mat



Depicts low profile traction surface



### Heavy Duty Road Mats

TuffTrak<sup>®</sup> is the ultimate heavy duty road mat for temporary roadways and work areas for heavy plant, machinery and multiple vehicles with a weight loading to 150\* tonnes, dependent on ground conditions.

### Incredibly Tough & Flexible

Made from tough High Density (HD) or Ultra High Molecular Weight (UHMW) Polyethylene, TuffTrak<sup>®</sup> is the market's leading 100% solid compression moulded mat and is chemically inert making it ideal for use on eco sensitive sites. Being solid means that it cannot be punctured - avoiding the intake of liquids and reducing the threat of invasive species or cross contamination between sites.

### Chevron Traction<sup>®</sup> Surface

The engineered, unique Chevron Traction<sup>®</sup> surface delivers ultimate grip and helps to dispel mud whilst vehicles traverse over them.

The chevron nub design reduces sideways movement and slippage delivering optimal forward traction for heavy vehicles and machinery.

### Logistics

TuffTrak<sup>®</sup> is lighter to transport than most alternative temporary road mats. More mats can, therefore, be loaded on to trucks or in to containers, reducing transportation costs.

\*Compression tested at National Physical Laboratory, UK





## Advantages

- » Solid one piece construction
- » Unique chevron traction® surface
- » Lower transport cost than other mats
- » Tough durable working areas and temporary roads for heavy plant, equipment and multiple vehicles
- » Protects against severe rutting and eco damage to ground and sensitive sites
- » Supports health & safety objectives
- » A reversible low profile surface for drilling rigs, work pads, depot areas and helipads
- » Connection options for different terrain & equipment
- » Non-conductive - ideal for use on transmission projects
- » Designed and manufactured in the UK and Europe



The internationally proven TuffTrak® from Zigma® Ground Solutions delivers heavy duty temporary access for all weather and ground conditions within;

- » Civil Engineering
- » Construction
- » Oil & Gas
- » Transmission
- » Infrastructure
- » Utilities maintenance
- » Military sites
- » Events

**zigma**<sup>®</sup>  
**Ground Solutions**  
The fast and safe way forward





# Product Specifications

## TuffTrak® Heavy Duty Road Mat

**Material:** High Density Polyethylene (HDPE) or Ultra High Molecular Weight Polyethylene (UHMWPE)

**Size:** 3000mm x 2500mm x 38mm

**Weight:** 295kg



TuffTrak® bracket and lifting lug

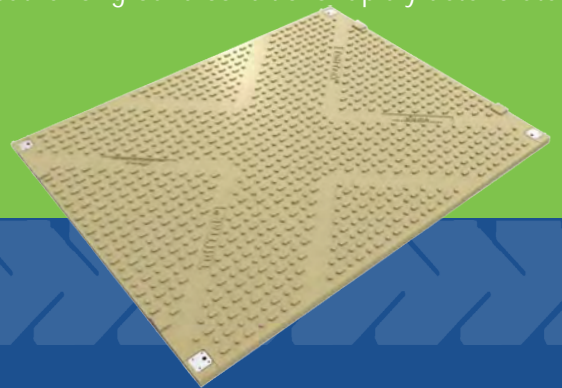
TuffTrak® is fast to install with a simple 'drop in' bolt system.

TuffTrak® also offers a range of connectors including high tensile hi-viz 'flex' straps for increased safety and deployment over undulating ground. The unique chevron traction® surface is regarded as the most effective in the market and is ideal when the weather or ground conditions rapidly deteriorate.



Mat lifting points

TuffTrak® coloured Virgin



## Connection Systems

**Hi tensile h-viz 'flex' connectors for increased safety and performance over undulating ground.**

**Material :** Steel and nylon  
**Size:** 240mm x 70mm  
**Weight:** 0.15 kg

**Metal connectors for heavy equipment.**

**Material :** Steel  
**Size:** 260mm x 40mm x 5mm  
**Weight:** 0.35 kg



To request a full installation guide please call on  
 +44 (0) 845 6456 388

# Technical Product Information

For use as a technical guide only

## TuffTrak® Heavy Duty Road Mat

<b>Material:</b>	High Density Polyethylene (HDPE) or Ultra High Molecular Weight Polyethylene (UHMWPE)
<b>Size:</b>	3000mm x 2500mm x 38mm; overall thickness 47mm
<b>Weight:</b>	295kg

Weight loading	150 tonnes*
Material	Premium recycled or virgin High Density (HD) or Ultra High Molecular Weight (UHMW) Polyethylene Choice of colours for Virgin or UHMWPE Additive packages for UV protection and static dissipation are available
Material strength	Compression loads in excess of 110kg/cm <sup>2</sup> have been recorded during tests undertaken at an accredited UK laboratory.
Temperature variations	Zigma® products are used globally in many geographic locations covering a wide range of temperatures. The recommended operating temperature range is -50 °C to +80 °C. For severe cold climates TuffTrak® made from UHMWPE material is advised
Colours available	Black for recycled HD or UHMW polyethylene. Choice of colours for Virgin HD or UHMW polyethylene.
Connectivity	Easy to install 'Drop in' bolt system Metal connectors for heavy equipment High tensile, hi-viz 'flex' connectors for increased safety and performance over undulating ground
Dual grip capability	The unique high profile chevron traction® surface delivers ultimate grip and reduces sideways movement and slippage, delivering optimal forward traction for heavy plant, machinery and vehicles. Low profile traction surface on reverse of mat
Environmental features	Weather proof, water and chemical resistant. HD and UHMW polyethylene are resistant to acids, alkalis and solvents.
Logistics	80 TuffTrak® mats per standard EU curtain sided trailer, 13.6 loading meters. up to 24 tonnes. (Comprising 16 pallets of 5 mats)
Customisation	Corporate logo and contact details can be added, subject to minimum order.

**zigma**<sup>®</sup>  
Ground Solutions  
The fast and safe way forward

## Health and Safety Information

### General

Critical hazards to man and environment	None
Environment	The disposal of the material presents no danger regarding toxicological or ecological considerations. Due to low water solubility, bio-availability unlikely.
Solubility in water	Insoluble
Regulatory	Not classified as hazardous under transport regulations.

### Safety Properties

Melting point	Crystalline Melt Temperature 135 - 145°C
Ignition temperature	> 360°C
Thermal decomposition	> 390°C
Stability and reactivity	No possibility of degradation under normal circumstances. Degradation will only occur above the decomposition temperature.
Toxicology	Not harmful to health under normal conditions.

TuffTrak® is available for worldwide sale or hire through our official distributors and agents - please contact us for further details.

UK Head Office:  
Tel: +44 (0) 8456 435 388

Unit 11, M11 Business Link,  
Parsonage Lane, Stansted,  
Essex CM24 8GF. UK

Sales office - Ireland:  
Tel: +353 (0) 91 766 878

sales@zigmagroundsolutions.com  
www.zigmagroundsolutions.com

\*Load performance depends on ground conditions as well as the weight and type of vehicles and plant. Zigma® Ground Solutions Ltd, its agents or employees are not liable for any damage to existing ground or property through use of TuffTrak®. The sale or hire of all temporary access mats are subject to Zigma® Ground Solutions' standard Terms and Conditions. These are available from our website [www.zigmagroundsolutions.com](http://www.zigmagroundsolutions.com) or by telephoning our sales office.