

**Tool steel stockholders and suppliers, delivering to the whole of the UK.** West Yorkshire Steel are stockholders of round bar, flat bar and plate. Large block, plate and diameters can be bandsaw cut to your specific requirements. Tool Steel specifications are stocked in a large range of grades conforming to British, European, American and International standards. Specifications are available for hot work, cold work and plastic mould applications, suitable for subsequent heat treatment and hardening. Tool steel to standards including [BS4659](#), [BS EN ISO 4957](#), [Werkstoff](#), [AISI](#), [DIN 17350](#), [ASTM A681](#) and EN10027-2 are stocked as well as other designated standards.

Our comprehensive database includes [tool steel brand names](#) - specifications and grades old and new. If you do not find the specification you require on our web site please contact our sales team who may be able to assist you with your enquiry.

We welcome export enquiries for tool steel. Please contact our sales office and consult our [shipping policy](#) for further details.

---

**Tool Steel Form of Supply** West Yorkshire Steel are stockholders and suppliers of round bar, flat bar, plate and block. Diameters can be sawn to your required lengths as one offs or multiple cut pieces. Rectangular pieces can be sawn from flat bar or plate to your specific sizes. Ground tool steel bar can be supplied, providing a quality precision finish bar to close tolerances. Contact our experienced sales team who will assist you with your enquiry.



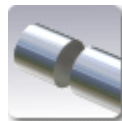
Sheet



Plate



Flat



Diameter

---

## Cold Work Tool Steel

Cold work tool steel specifications are stocked in round bar, flat bar and plate which can be bandsaw cut to your specific requirements. Cold work steel specifications are held in International Standards including BS4659, BS EN ISO 4957, AISI, Werkstoff Nr and DIN designations. Cold works grades are through hardening steels which can be heat treated to a high Rockwell hardness. These grades are ideally suited for the manufacture of tools working in a surface temperature of not more than 200°C. With a well balanced alloy content cold work specifications offer high wear resistance, good toughness, excellent compressive and impact strength and high dimensional stability in heat treatment. Cold work grades combine wear and toughness characteristics which suit relatively heavy forming and cutting operations at room temperature.

<b>BS4659</b>	<b>AISI</b>	<b>Werkstoff</b>	<b>DIN</b>
• B01	• <a href="#">O1</a> • <a href="#">1.2510</a>		• 100MnCrW4
• BD2	• <a href="#">O2</a> • <a href="#">1.2842</a>		• 90MnCrV8
• BD3	• <a href="#">D2</a> • <a href="#">1.2379</a>		• 155CrVMo 12-1
• BA2	• <a href="#">D3</a> • <a href="#">1.2080</a>		• X210Cr12
• BS1	• <a href="#">D6</a> • <a href="#">1.2436</a>		• X210CrW12
	• <a href="#">A2</a> • <a href="#">1.2363</a>		• X100CrMoV 5-1
	• <a href="#">S1</a> • <a href="#">1.2550</a>		• 60WCrV7
			• X153CrMoV12

---

## Hot Work Tool Steel

Hot work tool steel specifications are stocked in diameters, flat bar and plate and can be sawn to your requirements. Hot work steel grades are held in International Standards such as BS4659, BS EN ISO 4957, AISI, Werkstoff Nr and DIN designations.

Hot work tool steel specifications provide strength and hardness during prolonged exposure to elevated temperatures. These grades offer good machinability in the annealed supply condition. Hot work grades offer resistance to erosion, high temperature corrosion and oxidation with dimensional stability during heat treatment.

<b>BS4659</b>	<b>AISI</b>	<b>Werkstoff</b>	<b>DIN</b>
• BH13	• <a href="#">H13</a> • <a href="#">1.2344</a>		• X40CrMoV 5-1

---

## Plastic Mould Steel

Plastic mould tool steel specifications are stocked in round bar, flat bar and plate that can be bandsaw cut to your specific requirements. Plastic mould steel specifications are held in International Standards such as BS4659, BS EN ISO 4957, AISI, Werkstoff Nr and DIN designations.

Plastic mould tool steel grades offer a high wear resistance, good polishability and etching ability with adequate corrosion resistance.

<b>BS4659</b>	<b>AISI</b>	<b>Werkstoff</b>	<b>DIN</b>
• BP20	• <a href="#">P20</a>	• <a href="#">1.2311</a>	• 40CrNiMo7
• BP30	• <a href="#">P20 + S. (Sulphur)</a>	• <a href="#">1.2312</a>	• 40CrMnMoS-8-6
	• <a href="#">420</a>	• 1.2316	• X45NiCrMo4
		• <a href="#">1.2767</a>	• X40Cr13
		• <a href="#">1.2083</a>	• X40Cr14
		• 1.2085	• 45NiCrMo16
			• 45NiCrMoV7

---

## Drill Rod

Tool steel drill rod is supplied as precision ground bar to tight tolerances. Commonly supplied in O1 annealed tool steel grade. Other grades of tool steel drill rod are available, please advise our sales team of any specific specification requirements when sending your enquiry.

---

## Heat Treatment

When heat treating tool steel grades consideration should be given to hardening temperatures, including rate of heating, cooling and soaking times which will vary due to factors such as the shape and size of each component. Other considerations during heat treatment include the type of furnace, quenching medium and work piece transfer facilities. Please consult your heat treatment provider for full guidance on heat treatment of tool steels.

---

## Certification

Tool steel specifications are commonly available with a cast and analysis certificate or a certificate of conformity, please request when placing any orders.

---

## Quality Assured Supply

All our tool steel specifications are supplied in accordance with our ISO 9001 : 2008 registration.

---

**Contact West Yorkshire Steel with your enquiries for round bar, sheet and plate in tool steel.**

---

## Contact Us

**Tel:** 01937 584440  
**Fax:** 01937 580128  
**Email:** [sales@westyorkssteel.com](mailto:sales@westyorkssteel.com)

**Address:** West Yorkshire Steel Ltd,  
Sandbeck Industrial Estate,  
Wetherby, Leeds.  
LS22 7DN. UK

**Website:** <http://www.westyorkssteel.com/>