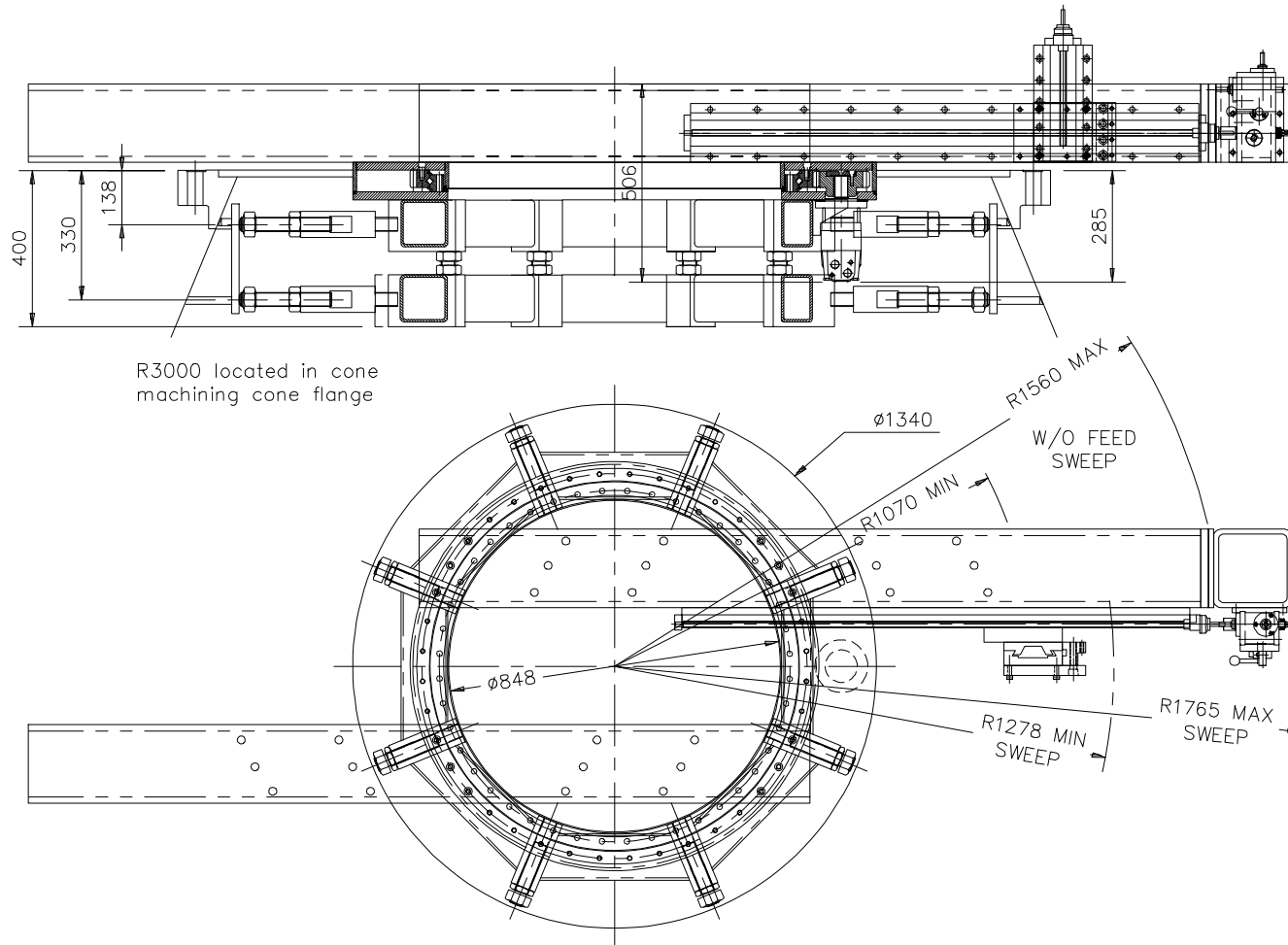


R3000



R3000 located in cone machining cone flange

This machine is designed to operate in the horizontal, vertical, inverted and inclined positions

The range of Reekie Machine Tools cover machining capacities from zero to 10 metres diameter, and operate successfully on all ferrous and non-ferrous material capable of normal machining

Machine Data

Internal Location

Machining Capacity $\varnothing 1345 - \varnothing 3000$ mm

Location diameters $\varnothing 1345 - \varnothing 2600$ mm

External Location

Machining Capacity $\varnothing 0 - \varnothing 845$ mm

Location diameters $\varnothing 100 - \varnothing 845$ mm

Cutting speed 20 m / min.

Drive Information

OMS 315 30 l/min. 10 rpm (m/c speed)

Gear Ratio 1 : 8

Other Information

Radial and axial feed can be automatic giving a feed range between 0 and 1mm per rev.

Machine can be hydraulic driven producing 5kW of machining power, or Air driven giving 2.5 kw of machining power.

Radial Arm beams can be positioned in 3 places to give maximum travel or minimum sweep radius.

Non standard beams can be manufactured for special applications.

Weight, m/c, 2 x 200 Beams, 1.3m slide and toolholder assembly = 1250 kg.