

# KVT

## Split cable glands



1

### Product description

KVT is a circular split frame for quick and easy installation of cables or complete cable harnesses.

Polyamide locknuts are included in the shipment.

For routing SUB-D, DVI or PROFIBUS connectors in combination with the split cable glands KVT, special locknuts with cut-outs are required. The cut-out dimensions are listed on page 126.

\* max. Cable diameter 15mm

### Locknuts

Special locknuts with cut-outs are separate available.



KGM-SUB-D9 (Order No. 45105) fits SUB-D9 connectors.

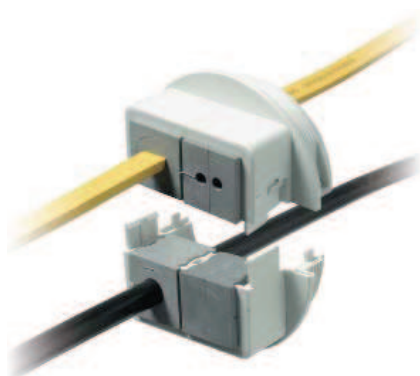
KGM-PB (Best.Nr. 45107) fits DVI and PROFIBUS connectors.

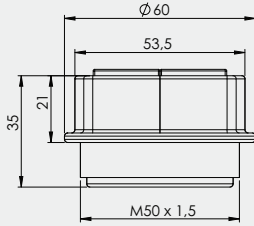
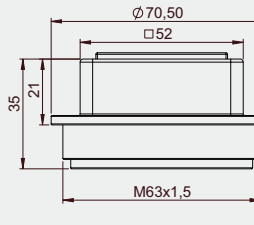
KGM-SUB-D25 (Order No. 45108) fits SUB-D25 connectors.

Description	Type	Order No.	Inserts KT small   large	Thread Thread length	PU
	KVT 25*	45035	1   -	M25 x 1.5 Length: 14 mm	10
	KVT 32	45036	1   -	M32 x 1.5 Length: 14 mm	10
	KVT 32 + KGM-SUB-D9	45037	1   -	M32 x 1.5 Length: 14 mm	10
	KVT 40	45203	1   -	M40 x 1.5 Length: 14 mm	10
	KVT 40 + KGM-PB	45205	1   -	M40 x 1.5 Length: 14 mm	10

# KVT

## Split cable glands



Type	Order No.	Inserts KT small   large	Thread Thread length	PU	Description
KVT 50   2	45204	2   -	M50 x 1.5 Length: 14 mm	5	
KVT 50   2 + KGM-SUB-D25	45206	2   -	M50 x 1.5 Length: 14 mm	5	
KVT 63   1**	45211	-   1	M63 x 1.5 Length: 14 mm	5	
KVT 63   4**	45214	4   -	M63 x 1.5 Length: 14 mm	5	

### Advantages

- Insertion of pre-terminated cables
- Warranty of pre-terminated cables remains
- Retrofitting and maintenance can be carried out easily and quickly
- High packing density, wide variety
- Suitable for standard or metric cut-outs
- Polyamide locknuts are included in the shipment

### Specification

Material	Polycarbonate
Colour	similar RAL 7035
Flame class	UL-94 Vo, self-extinguishing
Protection class	IP 54, with gasket and correct selection of the cable inserts
Temperature	- 30°C to + 100°C (static)
Properties	halogen-free, silicone-free
Cut-out dimension	metric standard sizes

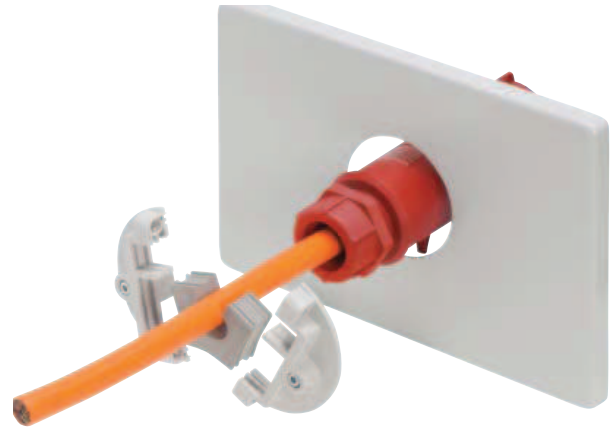
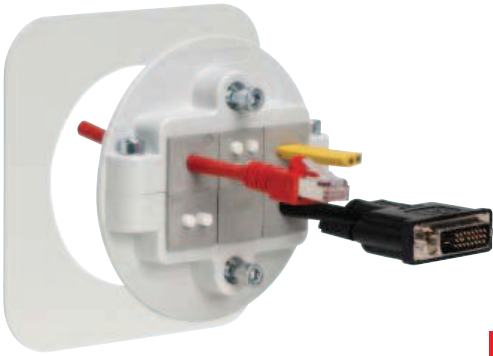
### Accessories

KT Cable inserts	Page 24   28
KVT-EMC bracket	Page 95
Locknuts	Page 126

\*\* For KVT 63 a locknut M63 (brass-nickel plated) is included in delivery.

# KVT 80

## Split cable glands



Description	Type	Order No.	Inserts KT small   large	PU
-------------	------	-----------	-----------------------------	----

1

### Product description

The KVT 80 split cable glands are designed for routing and sealing pre-terminated cables. By connecting the two half-shells with attached screws, the inserts provide sufficient pressure on the routed cables to obtain a high degree of strain relief. The KVT 80 is applicable for wall thicknesses from 1.5 mm to 10 mm.

### Advantages

- Insertion of pre-terminated cables
- Warranty of pre-terminated cables remains
- Retrofitting and maintenance can be carried out easily and quickly
- High packing density, wide variety
- Provides very good strain relief
- Quick and easy assembly from the front side

### Note

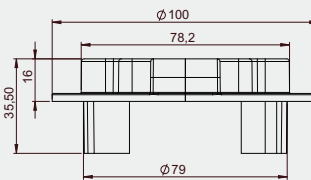
When mounting the KVT 80 on sheet metal, we recommend the following torque values:

- 1.5 mm sheet = 1 Nm
- From 2.0 mm sheet = 1.5 Nm

### Specification

Material	Polycarbonate
Colour	similar RAL 7035
Flame class	UL-94 V0, self-extinguishing
Protection class	IP 54, with gasket and correct selection of the cable inserts
Temperature	- 30°C to + 100°C (static)
Properties	halogen-free, silicone-free
Cut-out dimension	80 mm diameter

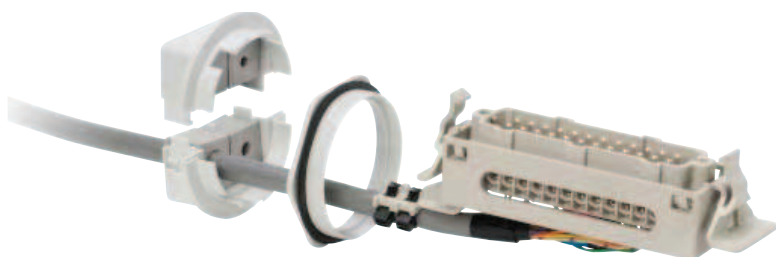
### Accessories



KVT 80   3	45236	2   1	1
KVT 80   6	45237	6   -	1

# KVT - SNAP

## Split cable glands



Type	Order No.	Inserts KT small   large	Thread Thread length	PU	Description
KVT - SNAP 32	45130	1   -	M32 x 1.5 Length: 11 mm	10	
KVT - SNAP 40	45134	1   -	M40 x 1.5 Length: 11 mm	10	
KVT - SNAP 63   4*	45152	4   -	M63 x 1.5 Length: 11 mm	5	
KVT - SNAP 63   1*	45154	-   1	M63 x 1.5 Length: 11 mm	5	
KGM 32	52275	PA, grey	M32 x 1.5	10	
KGM 40	52276	PA, grey	M40 x 1.5	10	
KGM 63	52278	PA, grey	M63 x 1.5	5	

1

### Product description

KVT is a circular split frame for quick and easy installation of cables or complete cable harnesses.

Pre terminated cables can be routed through thick walls (> 5mm) e.g. into cast junction boxes by using the model KVT-SNAP, without the use of tools.

\* For KVT 63 a locknut M63 (brass-nickel plated) is included in delivery.

### Assembly

- SNAP ring is screwed into metric thread tapped into housing (or it can be fastened with a lock nut).
- Once the SNAP ring is affixed to the housing the KVT equipped with cables is simply pushed into the SNAP ring. Quick and easy installation!

### Specification

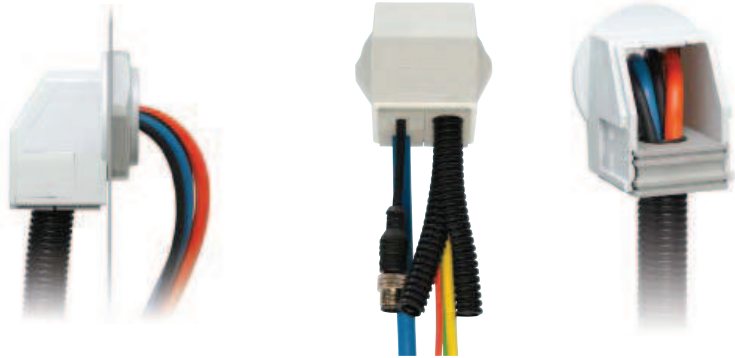
Material	Polycarbonate
Colour	similar RAL 7035
Flame class	UL-94 Vo, self-extinguishing
Protection class	IP 54, with gasket and correct selection of the cable inserts
Temperature	- 30°C to + 100°C (static)
Properties	halogen-free, silicone-free
Cut-out dimension	metric standard cut-outs

### Accessories

KT Cable inserts	Page 24   28
KVT-EMC bracket	Page 95
Locknuts	Page 126

# KVT - W90

## Split cable glands



Description	Type	Order No. with locknut	Inserts KT small   large	Thread Thread length	PU
-------------	------	---------------------------	-----------------------------	-------------------------	----

1

### Product description

The split KVT-W90 cable glands are used to insert and seal pre-terminated cables and conduits at a 90° angle.

In particular, the KVT 50-W90 is perfectly suited to hold corrugated or smooth hoses. A large number of cable entry inserts is available to the user.

Polyamide locknuts are included in the shipment.

### Advantages

- Installation at an angle of 90° to the cabinet
- Insertion of pre-terminated cables and conduits
- Warranty of pre-terminated cables remains
- Suitable for standard or metric cut-outs

### Specification

Material: Polycarbonate  
 Flame class: UL-94 Vo, self-extinguishing  
 Protection class: IP 54, with gasket and correct selection of the cable inserts  
 Temperature Properties: - 30°C to + 100°C (static)  
 Properties: halogen-free, silicone-free  
 Colour: similar RAL 7035

### Accessories

KT Cable inserts: Page 24 | 28  
 WST Conduit, split: Page 120  
 KVT-EMC bracket: Page 95  
 Locknuts: Page 126

	KVT 32 - W90	45404	1   -	M32 x 1.5 Length: 11.5 mm	10
	GMT 32	31120	-	M32 x 1.5	10
	KVT 50   4 - W90	45424	4   -	M50 x 1.5 Length: 11.5 mm	5
	KVT 50   1 - W90	45414	-   1	M50 x 1.5 Length: 11.5 mm	5
	GMT 50	31140	-	M50 x 1.5	10