

ISSN 2040-7955 (Print)

BALCONY VIEWS magazine

Innovative design solutions for contemporary building



Edition II

Welcome to Balcony Views Magazine



Effi Wolff
Editor

Balcony Views Magazine is an effective way of communicating ideas, innovations, practical information and design concepts to architects, contractors, developers and self-builders.

Welcome to edition II of Balcony Views – the magazine produced by Balcony Systems to showcase the tremendous scope of our product applications and how they can truly transform buildings.

Balcony Systems is one of the UK's leading specialist suppliers of innovative and advanced clear glass and aluminium balustrading, Juliet balconies and curved sliding patio doors.

In this issue, we feature a wide range of case studies offering inspirational design concepts and practical information for architects, specifiers and professionals across the construction industry.

We have included projects both in the UK and abroad that demonstrate just what can be achieved with our spectacular curved patio doors, elegant glass balustrading and stylish Juliet balconies.

Effi Wolff, Managing Director of Balcony Systems, explains: "Our unique proprietary systems have been developed from years of on-site experience to solve many installation issues. Curved and straight glass balustrading panels can meet the most demanding of complex design and aesthetic requirements - with spectacular results.

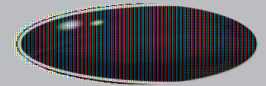
"We hope our magazine will inspire you when considering your own Grand Design."

Enjoy the read!



Published by
Editor
Design
Copywriter

Balcony Systems Solutions Ltd
Effi Wolff
Heather Dewhurst, Design to Print UK
Kathy Wilkinson



The content of this magazine is copyright of Balcony Systems Solutions Ltd. All rights reserved. Any redistribution or reproduction of part or all of the contents in any form is prohibited other than the following:

1. You may print extracts for your personal and non-commercial use only.
2. You may copy the content to individual third parties for their personal use, but only if you acknowledge the magazine as the source of the material.

You may not, except with our express written permission, distribute or commercially exploit the content.

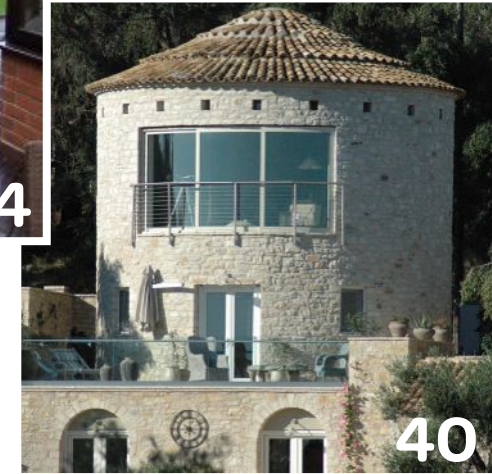
Cover photo: itstockphoto.com

SUBSCRIBE

To subscribe to your **FREE** copy of **Balcony Views Magazine** please visit our website, www.balconyviews.co.uk or call 01342 410 411

Contents

- 4 Ahead of the curve**
Balcony Systems curved sliding patio doors
- 5 Curved door keeps panoramic views**
Case study, Adrian and Clare Lovegrove, curved patio doors in Gloucestershire
- 7 Curves replace bay windows**
Case study, Jenny and Geraint Price, curved patio doors overlooking the Solent
- 8 Get in the swim with curved patio doors**
Case study, Margaret and Andy Demetriou, curved doors for an indoor swimming pool extension
- 10 Complex curves in 'picture-perfect' studio**
Case study, Wildwood McDonalds Architects, curved doors & complex fixed units in West Yorkshire
- 12 Curved door takes centre stage**
Case study, Val and Brian Grinter, large curved patio door in Poole, Dorset
- 13 Juliets have curves**
A unique solution for upper floor curved patio doors – curved Juliet glass balconies
- 15 Introducing Balcony Systems' glass balustrades**
Article, the benefits of Balcony Systems' glass balustrades
- 16 Glass keeps the sea views**
Case study, Andy Wheeler, glass balustrades in West Sussex
- 17 Sea more with Balcony Systems**
Case study, Ivan Starkey, balcony renovation project in Leigh-on-Sea, Essex
- 17 Balcony Systems' balustrade protects from the elements**
Case study, Pamela Tepper, coastal-resistant balustrades in Kent
- 18 Balustrade transforms sea front hotel**
Case study, White Rock Hotel, balustrades suitable for public areas on Hastings sea front
- 19 Glass act for Trent Park**
Case study, Trent Park, curved & straight glass balconies on award-winning development



- 22 Self-cleaning glass balustrade keeps canal views**
Case study, Lynda Hadfield, balustrade in Cheshire
- 24 Upgrading an old wooden railing to a Balcony Systems' glass balustrade**
Case study, Alex Findlay, balcony decking receives a new lease of life in Surrey
- 26 Uniqueness comes as standard**
Balustrading from Balcony Systems has unique in-built features that you will not find anywhere else
- 27 Clearly better corners**
Case study, Miriam and Dominic Nevill, glass balustrade in Crowborough, East Sussex
- 28 Internal glass balustrade adds 'wow' factor**
Case study, Alexa Collins' balustrade as featured on BBC's "To build, or not to build" series
- 30 Privacy Screens**
Article, 1.8m high privacy screens, wind loadings and requirements
- 33 Glass Juliet balconies are the clear choice**
Article, why Balcony Systems' glass Juliet balconies are the clear choice
- 34 Clearly the seaside choice**
Case study, Roger and Judith Boon, Juliet balcony in Llandudno, North Wales
- 35 Tripping the light fantastic with Balcony Systems**
Case study, Nigel and Jo Spelman, how glass Juliet balconies transformed their house
- 36 Complementary colours**
Case study, David and Zeida Gunn, a beautiful Juliet in rural Bedfordshire
- 37 Clear glass Juliet balconies take care of the views**
Case study, glass Juliets at Scottish retirement village south of Glasgow
- 40 Balcony around the world**
Article, an interesting assortment of projects supplied by Balcony Systems around the world
- 42 The future of glass protection is here**
Article, BalcoNano® the revolutionary solution for self-cleaning coating on glass
- 49 Balcony just gets bigger**
Expansion news from Balcony Systems

Ahead of the curve

Balcony's WOW factor product

Few home improvements can compete with the 'WOW' factor of a curved sliding patio door from Balcony Systems. Adding space and light to maximise panoramic views, these spectacular doors are a viable and affordable option for any property.

Ground-breaking technological developments have made curved patio doors readily available, giving architects a whole new perspective and many new options. Balcony Systems invested heavily in production facilities to make curved sliding doors available for wider use.

Before Balcony Systems introduced this truly innovative product to the UK market there really was nothing quite like it. Architects and designers frequently tell us that the curved patio door was the inspirational solution they were seeking.

Private individuals too are thrilled with the 'prestige' effect it has on their properties, as well as its practicality and ease of use. They really love the curved door! Ideal for coastal areas, one customer even designed her new build home around a six-panel door to take advantage of far-reaching sea views.



Multiple door options

Curved doors are supplied in a variety of configurations, from two to six panels, with any combination of fixed and sliding sections allowing wide openings. For example, the largest size, a W6F in six parts has doors that lock in the middle. Two panels on the left and two on the

right slide in front of the fixed panels at the ends. This allows approximately two thirds open.

Doors are supplied with toughened Low-E double glazed 28mm units fixed within twin polyamide thermally-broken aluminium profile sections, which can be finished in any RAL powder-coated colour.



Eco-friendly glass at almost any radius

All Balcony Systems' curved doors are manufactured to clients' bespoke radius requirements using precision-bent curved safety glass. Balcony's own double-sided self-cleaning glass coating can be specified to protect the glass from the elements, keep the glass looking new for longer and to reduce the frequency of cleaning required.

In addition, all doors come with secure multi-point locking mechanisms and a high weather rating ensures they are thermally-efficient. They can be specified up to a maximum height of 2.6 metres and a maximum panel length of 1.75 metres measured round the curve.

Curved sliding doors can be made to a minimum radius 1500mm, making them suitable for smaller projects too. When installed on first floors or above, Balcony can also supply curved Juliet or external balconies to follow their shape.

Why go straight when you can enjoy the beauty of curves? Full installation instructions are supplied or Balcony Systems can install the doors for you.

Prices are more affordable than you think. On Balcony's website a dynamic pricing tool has been created so that costs can be checked online at

www.balconette.co.uk/shop/PatioDoors

Curved door keeps panoramic views

Curving round almost two sides of their Gloucestershire home, Adrian and Clare Lovegrove's curved patio door from Balcony Systems makes the most of panoramic views to their garden and beyond.

Light and views are further enhanced by two large flat windows - also supplied by Balcony - either side of the curved door, which has two fixed and two sliding panels.

The couple chose the Balcony Systems'

curved door for their new extension, which increases the size of the former 1826 chapel by around a third. Having viewed another installed curved door, they decided it would suit both the character of the property and their lifestyle.



“In terms of living, the door is brilliant as it really brings the inside and outside together. Everyone who visits us instantly comments on the door, saying ‘wow, it’s amazing!’”

“We had considered a segmented system, but the additional posts would have spoiled the lovely views over the garden, to an adjacent field with livestock and to the Malvern Hills in the distance,” explained Clare.

“We like the door’s slim sightlines and elegant appearance. Its thermal efficiency has also impressed us; we were concerned that the large areas

of glass would lose heat, but the double-glazed panels really do keep the warmth in and perform well – even during the freezing winter of 2010/11.”

Clare added: “In terms of living, the door is brilliant as it really brings the inside and outside together. Everyone who visits us instantly comments on the door, saying ‘wow, it’s amazing!’”



Curves replace bay windows

Replacing leaky old steel bay windows with a four-panel curved sliding patio door from Balcony Systems has transformed Jenny and Geraint Price's dining room at their home overlooking the Solent on the south coast.

The couple's architect Jon Tyrell recommended the door, with two fixed and two sliding panels, as a weatherproof solution that would make more use of the room and maximise enjoyment of its glorious panoramic garden and sea views.

Jenny said: "It's made a huge difference to how we use this space. The old windows let in water and hardly opened, so it would get very hot in summer. Now we can open the doors as much as we need, which keeps the house cooler, yet we can still be sheltered on breezy days."

She added: "Balcony's installation service was excellent too and an issue with the door was resolved immediately. We were very impressed!"

For Jon Tyrell, who had previously used Balcony's products, the curved patio door was an obvious choice. "The original windows had small panes that obscured the view, so the door has made a dramatic transformation and looks great," he added. "It's a very simple and very successful idea!"

"The original windows had small panes that obscured the view, so the door has made a dramatic transformation and looks great. It's a very simple and very successful idea!"



After



Before



Get in the swim with curved patio doors



Stunning curved patio doors supplied and installed by Balcony Systems transform the appearance and enhance all-year round use of a swimming pool extension in Hertfordshire.

“The curved doors are wonderful; they’re so much prettier than conventional options...”

Adding tremendous space and light, the doors have three sliding panels that allow Margaret and Andy Demetriou of Broxbourne to ‘bring the outside in’ during hot summer days. Panoramic views to the garden can be enjoyed whatever the weather.

Curved glass was an essential part of the specification and the couple’s decision was firmly sealed after seeing another Balcony curved patio door installation at apartments in Bexhill on Sea, East Sussex.

Installation of the doors - the Balcony Visioglide 100 thermally broken aluminium system – took under two days. Measuring 7.5 metres in curved length and 2.2 metres high, the four doors use curved 28mm low-e toughened double-glazed panels. Three doors slide open and one is fixed. Balcony provided the builder with a curved template to match the brickwork and the doors.

“The curved doors are wonderful; they’re so much prettier than conventional options and the smaller frame profiles leave more glass area to enhance the view. Everyone who sees them is stunned by how beautiful they look,” says Margaret. “Once you’ve seen them, you don’t want flat glass!”

The project presented a number of challenges, not least in finding a builder who would take on the job. “It was difficult getting someone, but eventually a carpenter/ builder friend agreed to help us,” says Andy.

“It looked an impossible job, but once he’d broken the back of it, everything progressed very well and we’re absolutely delighted with the result. Our six grandchildren use the pool the most; they love it!”

Balcony’s team worked with their builder to complete the installation process smoothly and on time. The couple have since hosted visits from several potential purchasers of curved patio doors.



“Everyone who sees them is stunned by how beautiful they look, once you’ve seen them, you don’t want flat glass!”



“Balcony was literally the only company that could supply the curved elements, which are used to great effect on this bespoke building.”

Installed by Balcony’s sister company VBS, the curved fixed windows and three-pane sliding curved patio doors complement the curves of the circular building, built by contractors William Anelay Ltd of York.

Featuring one fixed and two sliding panels, the doors when fully open provide a three metre-wide direct access to the garden. Their brown powder-coated frames replicate a bronze anodised finish to match

the diamond-shaped pre-oxidised copper roof, supported by Borrowdale slate walls.

Wildblood MacDonald Architects specified the unique design, with its sloping angular roof intersecting a curved face, for their client who wanted space and light to pursue his hobby. The stunning result is a ‘picture-perfect’ solution combining light-enhancing aesthetics with practical access and taking advantage of expansive countryside views.

Balcony Systems’ Managing Director Effi Wolff personally took on the challenge of designing and producing such ‘non-standard’ and highly-unusual shapes, saying: “From a technical perspective, we were initially unsure whether we could achieve this as curving the aluminium frames required a combination of curves in three different geometrical axes.

“It was quite a feat of engineering, so several test sections were made to check this in principle first before committing to the project. After much liaison with the VBS design team to confirm details, such as measurements and shapes, we achieved our ultimate goal. This was certainly no regular piece of aluminium joinery or glass bending!”

Effi added: “We always enjoy a challenge and when architects or designers plan an unconventional shape

Complex curves in ‘picture-perfect’ studio

Balcony Systems created a complex combination of curves in three geometrical axes to fulfil the architect’s demanding design for a photography enthusiast’s home office and studio in rural Yorkshire.



like this, which has the complexity of combining curved on plan windows with a sloping roof, we feel a great sense of achievement when we are able to fulfil the design envisaged and not revert to the safety of what has always been done. Architects are the ones that push design to its limits and I like to think that we are one of the companies that can realise the architects' visions.

"Installation on site went really smoothly thanks to the exactness of the design and manufacture. We are proud to have met this challenge and delivered a truly unique building for the client."

Project architects Philip Wright

and James Maclean chose Balcony Systems for the company's unique ability to meet the project's demanding specification. "Balcony was literally the only company that could supply the curved elements, which are used to great effect on this bespoke building. Everyone is very satisfied with the result," commented James.

"Balcony Systems gave us good service, with flexibility and ease of communication throughout the project. It's the first time we have used the company and it's quite likely we will again," he added.

As for the client, he said: "It's exactly what I wanted, giving me more space as a home office yet it evolved into something more splendid with the curves. Installation went very well as everything fitted and the tolerances were all correct. The curved doors open up to bring in the views - it's a lovely place to work from on a summer's day!"



"It's exactly what I wanted, giving me more space as a home office yet it evolved into something more splendid with the curves."

Curved door takes centre stage

It was love at first sight for Val and Brian Grinter when they first saw Balcony's spectacular curved sliding patio door at Grand Designs Live. Their passion for the product resulted in their new self-build home being designed around the striking six-panel feature.

"It looks stunning; what we like best is the simplicity of the elegant design and the slim frames that keep the far-reaching views across to Hamworthy Park and the sea beyond," enthused Val, who lives in Poole, Dorset.

"After seeing the curved door on Balcony's stand at the exhibition, we knew it was just what we wanted so we asked our architect Kevin Flack to incorporate this in the plans from the outset. Many people have commented on how beautiful it looks and we also see a lot of walkers admiring the door as they pass by."

Balcony's installer installed the 6.5 metre-wide door, which has two fixed and four sliding panels opening onto the extensive paved terrace. Glazed panels directly above increase light to the interior's open-plan kitchen, dining and lounge area.

Val added: "An added benefit is that the door can be opened as much or as little as required, giving ventilation but also protection from the weather on windier days. We absolutely love it!"

Architectural consultant Kevin

Flack said: "The clients' instructions and commitment to incorporate such a striking component to the rear façade, being the most dominant aspect of the new dwelling and maximising the fantastic views of the park and bay beyond, create a unique and imposing design."



"It looks stunning; what we like best is the simplicity of the elegant design that keep the far-reaching views across to Hamworthy Park and the sea beyond."

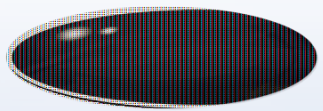


Juliets have curves

Not all Juliet balconies have to be straight, as shown in this award-winning spectacular new build project by property developer Princeton Homes in Lacock, Wiltshire. The high-spec timber-framed stone finish property, worth £1.5 million is on top of a hill, taking advantage of fabulous views across surrounding countryside.

Four curved patio doors were installed to one whole side of the house, leading off the living room/kitchen and snug on the ground floor and the master and second bedrooms on the first floor.

Following the shape of the first floor doors are two curved Juliet balconies, with Royal Chrome anodised aluminium handrails, so the patio doors could be opened and views enjoyed in safety. The minimal hand rail, with glass reaching from top to bottom and no clamps between panes means there is nothing to distract the eye.



Panoramic Perfection

with Curved Sliding Patio Doors

- Made bespoke to suit your radius requirements
- Now available with double-sided self-cleaning glass
- Great for coastal areas
- High weather rating
- Multi-point locks
- Low-E double glazing using toughened safety glass

Possible door configuration	Plan	Model
W2 Two doors sliding		
W2F Two doors – one sliding & one fixed		
W3F Three doors – two sliding & one fixed		
W4 Four doors sliding on two tracks		
W4F Four doors – two sliding & two fixed		
W6F Six doors – four sliding & two fixed		

To discuss your requirements, get a free quote or to place an order please contact

E: sales@balconette.co.uk

Tel: **01342 410411**

or go to our online shop

www.balconette.co.uk



TECHNICAL SPECIFICATION

SECTION/PROFILE STRUCTURE

Twin polyamide thermally-broken aluminium profiles
Stainless steel wheel track
Frames use internal glazing beads

PAINT /FINISH

60-100 microns polyester powder coating
Standard RAL colours available
Dual colour frames are an optional extra

GLAZING

28mm toughened Low-E double glazing
(6mm clear toughened glass – 16mm air cavity
6mm Low-E toughened glass)

MAXIMUM SIZES

Maximum height 2600mm
Maximum door girth 1750mm
(measured around the curve)

Introducing Balcony Systems Glass Balustrades

With its elegant clean lines requiring minimal posts and no glass clamps, there is no other balustrading system on the market that works quite like the proven product from Balcony Systems.

Put simply, the Balcony balustrade is unique, it's simple to install and it's very cost-effective. And because the system's adaptability and versatility permits a much wider range of design options, it has made a big impact in the UK and beyond – helping to transform countless types of properties, from the traditional to the contemporary.

The system has all the unique features one would hope for:

Clean line & clear glass aesthetics

No glass clamps, no corner posts, slick handrail profiles, polished glass corners and many more features put the Balcony glass balustrade system top of its class in terms of aesthetic features.



Experience-backed ease of application

With more than 30,000 metres already installed in the UK – that adds up to a lot of satisfied customers.

The Balcony system is tried, tested and proven. Built from our own on-site experience, the system is easy to design, apply, and install.

A super cost-effective system

The cost-effectiveness of the Balcony Balustrade system is not only measured in the immediate cost savings, but also in the long-term savings on maintenance.

The Balcony Balustrade system is designed to have minimal posts

and clean glass spans. In many cases, this effectively gives it the look of a structural glass system, but at a fraction of the cost.

From the single balcony to multi-balcony developments

The following case studies show the system's versatility and highlight the points above with examples of applications of our truly unique glass balustrades in private homes and large developments.



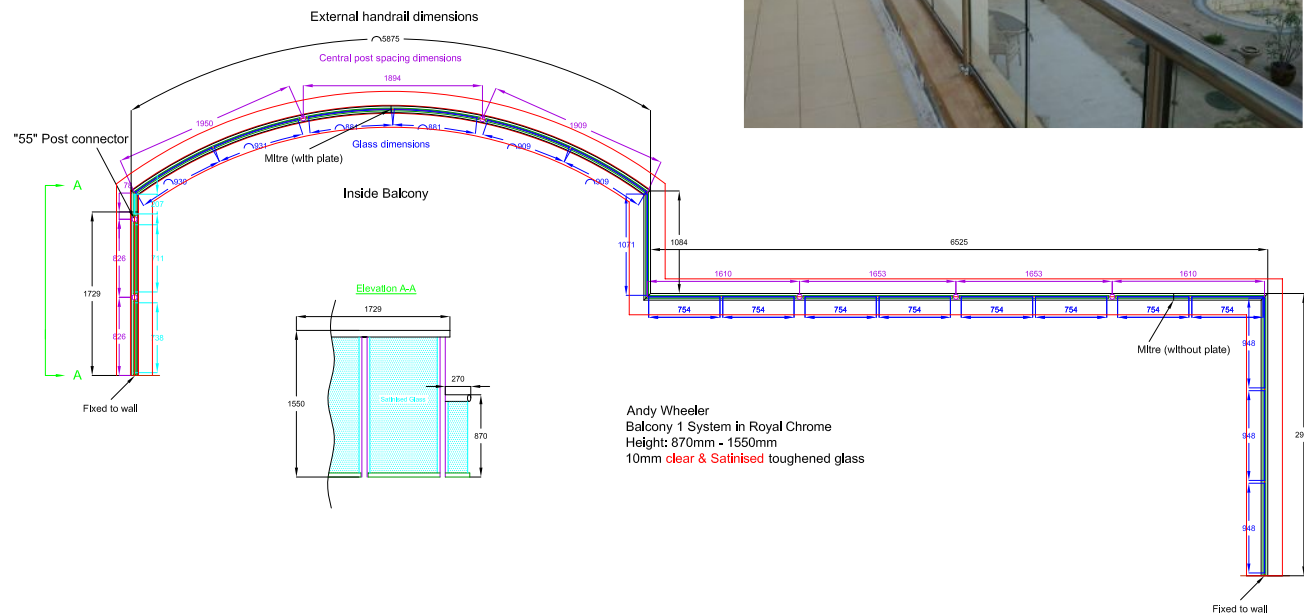
Glass keeps the sea views

Curved and straight balustrading measuring around 16 metres was manufactured by Balcony Systems for Andy Wheeler's seafront home, just metres from the beach in West Sussex.

Andy chose the clear glass panelled system to keep the views from the self-built property, provide shelter from the wind and for its aesthetically-pleasing appearance.

He said: "The balcony, with its curved panels on one side, is a very nice feature. Glass was my preferred solution as I didn't want to spoil the coastal views from the three bedrooms. Being able to see through the balcony was a key reason for choosing the product.

"The low-maintenance characteristics were also very important to resist the salt spray and, of course, there's no need for regular painting. Having researched various balustrading options on the internet, I liked the product and Balcony came up with a good package," added Andy.



The balustrading was installed on a substantial oak beam, which follows the contours of the first floor rear terrace overlooking the garden. At the end of the six-metre curved section is a two-metre tall privacy screen.

Installation was carried out by Jorge Bustamante of JBN Fix, an independent Balcony Systems registered installer, who commented: "The beauty of the Balcony balustrading system is that it allows for complete flexibility in design and installation options; as illustrated by the oak beam mounting and the curved element in this particular project."

Sea more with Balcony Systems

Replacing an old wrought iron balcony with a glass and aluminium one from Balcony Systems has not only given Ivan Starkey clear sea views with much lower maintenance; it's also helped to cure his leaking flat roof.



Anchored with special stainless steel brackets and with no clamps to spoil the view, the new 20 metre-long balcony at his Leigh-on-Sea home makes the most of coastal vistas from two living rooms.

Says Ivan: "The old wrought iron balcony's upright supports were screwed to the roof joists and eventually caused water penetration through hairline gaps. Installing a new balcony has

solved this problem.

He adds: "I like everything about the Balcony Systems product; clarity, very light, very nice and so easy to keep clean. There's no maintenance - an essential factor when living next to the sea - as the balustrade resists the corrosive effects of salt. The service was absolutely fantastic too; I would certainly recommend the company."

Balcony Systems' balustrade protects from the elements

Replacing an old and broken metal balustrade with a low-maintenance glass and aluminium balcony from Balcony Systems has transformed Pamela Tepper's beachside home in Kent. The new balcony now draws admiring glances from all who see it.



With Balcony's self-cleaning glass coating on the panels to resist salt and sand deposits, Pamela spends fewer hours cleaning and more time enjoying the stylish, robust and rejuvenated balcony at her Dungeness home, just metres from the sea.

"Glass was important for me to keep the sea views, but also for protecting against the strong winds," she says. "Even on the windiest

of days, it's absolutely calm when sitting below the height of the glass and I feel the balcony's attractive appearance has definitely added value and saleability to my property."

It would seem her view is reinforced by seaside visitors, as Pamela adds: "As the only home with a glass balcony, people do 'double-takes' when they look up and see it. I'm really pleased as it looks lovely and I also don't have to worry about corrosion or future maintenance.

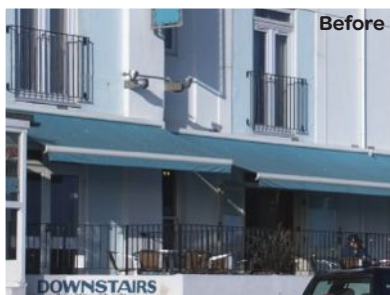
"Glass is the perfect balustrading choice for this harsh climate and really complements my home. Price-wise, it compared very favourably with alternative materials like metal, so I'm delighted!"



"I feel the balcony's attractive appearance has definitely added value and saleability to my property."

Balustrade transforms seafront hotel

Diners and drinkers at the White Rock Hotel in Hastings now get clear sea views, plus added wind protection, thanks to more than 50 metres of new glass and aluminium balustrading supplied by Balcony Systems.



Finished with an anodised silver handrail, the low-maintenance installation replaced old cast iron railings and has transformed the seafront hotel's appearance as owner Lawrence Bell explained: "It has made a massive impact on the overall external appearance of the building and we get a lot of people making appreciative comments and inquiring about it. It's amazing!"

"It has made a massive impact on the overall external appearance of the building and we get a lot of people making appreciative comments and inquiring about it. It's amazing!"

"The old railings were ancient, rusty and we had to paint them regularly, which was a costly and time-consuming exercise. Balcony's product is a million times better, with the added bonus of uninterrupted views and it stops the wind too."

The new balustrade encloses the ground-floor terrace café/bar overlooking the coast road and beach beyond. It was installed as part of a major refurbishment project at the privately-owned hotel.

Lawrence added: "Keeping the clear views without the use of clips to hold the glass panels in place was important for us. After much research, we decided on Balcony Systems and are delighted with the result. As a highly visible addition to the building, the balustrade gives it a smart and inviting appearance."

"The old railings were ancient, rusty and we had to paint them regularly, which was costly... Balcony's product is a million times better, with the added bonus of uninterrupted views and it stops the wind too."



Glass act for Trent Park

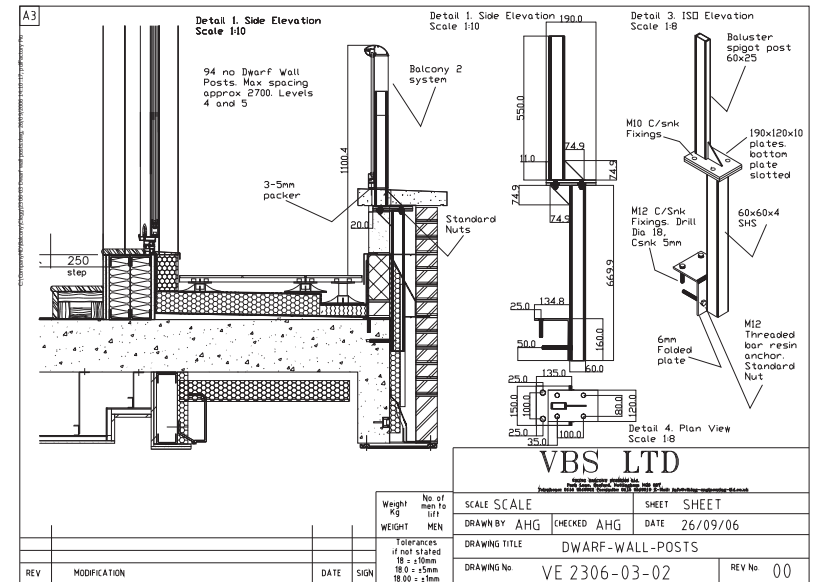


Nottingham's award-winning River Crescent sits on the banks of the River Trent and is immediately adjacent to 240 acres of woodland beauty in Colwick Country Park. Complementing this impressive development of prestigious apartments are hundreds of metres of glass and aluminium balustrading supplied by Balcony Systems.

External balconies have become an important and appealing feature of new homes, particularly for apartments where they allow residents convenient access to enjoy fresh air and surrounding views.

As an integral and aesthetic aspect of domestic architecture, their appearance also plays a key role in a property's visual appeal, helping to secure sales. Consequently, modern balcony styles now favour glazed systems, rather than railings or spindles, to retain clear panoramic views of surrounding scenery. Using low-maintenance materials, such as glass and aluminium, also has the added advantage of requiring almost no regular and costly maintenance to keep the structure looking as good as new.

Innovation and development in balcony design has resulted in a beautiful,



Edging Solution



yet cost-effective system available on the British market that replicates the look of structural glazing for both curved and straight balustrading solutions. As the Balcony system relies on the handrail to provide the required strength, in many cases the glass balustrades require no vertical supports to provide an uninterrupted view.

This was the key reason why the system was requested and specified for

“The main considerations were maximum glass and minimum uprights to keep the river views.”

Trent Park by the client, built to the east of Nottingham city centre. Balcony Systems supplied the specialist balustrading solution for 146 luxury one to three-bedroomed apartments to take advantage of spectacular riverside views.

Designed and installed by Balcony's sister company Viking Balcony Systems (VBS) the result delivered the client's vision for an aesthetically-driven balustrading solution that is as visually stunning as it is practical. VBS provided technical expertise at all stages of the project, from initial design concepts right through to overseeing installation of nearly 1,400 metres of straight and curved glass balconies.

Sweeping curved glass balconies follow the building's rounded lines on the larger apartments, allowing for unobstructed views across the landscaped grounds and enhancing light through the full height windows. The system's versatility allowed for specialist adaptation to suit the building construction. Waterproofing was also taken into account with the balcony installation interfacing with the cladding system.

The system is suitable for all types of applications, being compatible with timber, steel, stone, brick and concrete walls. As the toughened glass panels are held securely at the base and handrail, there are no clamps, clips or 'lugs' to spoil the clean lines.

According to a Clegg Construction spokesman, the two companies jointly developed the overall balcony design to achieve the desired bold design statement - and the clear glass balconies played a major part in that process.

"The main considerations were maximum glass and minimum uprights



to keep the river views. Achieving smooth curves without the need for a faceted construction and the expanse of glass gives a 'Mediterranean' feel to the whole development, which works really well," he added.

In recent years, the Trent Park development has won a series of high-profile industry awards. Following accolades from the Daily Mail Awards for Best Architecture, Best Development and Best Apartment, River Crescent gained further national recognition by winning the Your New Home/Daily Telegraph Award for Best Waterside Development.

River Crescent was the first phase of the Nottingham Waterside Regeneration Plan aimed at developing the River Trent from Colwick Country Park to Trent Bridge. This mixed use community has been carefully designed with the local environment in mind and the £50m River Crescent building also showcases the latest environmental and renewable energy initiatives.

"Achieving smooth curves without the need for a faceted construction and the expanse of glass gives a 'Mediterranean' feel to the whole development, which works really well,"

Self-cleaning glass balustrade keeps canal views



When a Cheshire householder added a wraparound terrace to her canalside home, she turned to Balcony Systems for the low-maintenance 35-metre curved and straight glass balustrading solution to keep the views.

A key factor in Lynda Hadfield's choice was Balcony's innovative self-cleaning glass coating, which creates a smooth surface that quickly repels water, dirt and grime to keep the glass cleaner for longer. This double-sided coating reduces cleaning and does not require

harsh chemicals to do the job effectively.

Balcony Systems supplied 26 metres of straight glass and aluminium balustrading, plus nine metres of curved panels, with the shiny Royal Chrome handrail finish replicating the look of stainless steel. This was

"I had heard about self-cleaning glass technology and that's why I specified Balcony's self-cleaning coated glass."

“It really does work; I simply hose it down regularly and any dirt just washes off the glass and greatly reduces maintenance”


installed by its specialist team on the extensive brick and granite terrace surrounding the bungalow on three sides.

Curved panels follow the lines of a semi-circular patio area within the extensive terrace that provides level leisure areas above the sloping garden, while also enhancing the property’s external appearance.

“I wanted the beautiful look of glass balustrading and to keep any cleaning chores to an absolute minimum,” explained Lynda. “I had heard about self-cleaning glass technology and that’s why I specified Balcony’s self-cleaning coated glass.



“It really does work; I simply hose it down regularly and any dirt just washes off the glass and greatly reduces maintenance. Clear glass was important for me, as I wanted to retain views of the narrowboats on the Cheshire Ring canal system from the terrace. The balustrading looks excellent and I am very pleased with it,” she added.

A photograph of a balcony with a glass balustrade. The balcony has a dark grey wooden deck. In the foreground, there is a large potted plant with purple and white flowers. The balcony overlooks a lush garden with a green lawn, a pond, and a red wooden bridge. The background is filled with various green plants and trees.

Upgrading an old wooden railing to a Balcony Systems' Glass Balustrade

Replacing an old wooden and post system, this new low-maintenance glass and aluminium balustrade supplied by Balcony Systems has delivered 100% for Alex Findlay and his family at his Surrey home.



“The balustrade is the crowning feature in the garden and Balcony has delivered absolutely 100%!”



Nearly 17 metres of clear toughened glass panels, topped with a shiny Royal Chrome handrail, have transformed the appearance of Alex’s garden and keep clear views from the conservatory to the magnificent Koi pond beyond.

Installed by Peter Nelmes, one of Balcony Systems registered installers, the Balcony 2 balustrade also supplies the required security around the outside terrace and pond from where the fish can be viewed in safety.

“The old timber balustrade had started to rot after 12 years and the last thing I wanted was for it to give way and someone to fall in,” explained Alex, who lives near Woking. “Having seen the Balcony product at Grand Designs, I decided it was the ideal replacement solution that makes a huge difference to this part of the garden.

“Now there’s no maintenance to worry about and I can see through the glass to the pond and rest of the garden. At night, blue lights on the decking illuminate the glass and create a beautiful effect. The balustrade is the crowning feature in the garden and Balcony has delivered absolutely 100%!”

Peter commented: “Installation of the new balustrade, which follows the exact contours of the old one, went smoothly. It offers long-term durability and provides an important security feature beside the pond.”

Uniqueness comes as standard

Balustrading from Balcony Systems has unique in-built features that you won't find anywhere else. So what makes this product so special? Here are the reasons:

Neat corners

Handrail corners are a very important element of the system. These are mechanically fixed, not welded, using special corner brackets that slot into the handrail shapes and are screwed together. This provides a very strong fixing that contributes to the strength of the handrail.

No corner posts

Corner posts are not needed as the inherent strength of the handrail and glass panels provides all the necessary support. This creates a seamless, minimalist look to enhance the clean, crisp lines of any balcony.

Mitre Protection Plates

Mitre protection plates perform two functions: they protect hands from accidental cuts on sharp edges and give tolerance to the corner mitre joint.

The specially-shaped plate covers the contours of the mitre and has rounded polished edges, protecting both the corner and hands with an aesthetically-pleasing appearance. A range of different mitre protection plates are supplied to suit all angles.

Supplied in an anodised Royal Chrome finish, these protection plates create a beautiful contour, almost like a perfect even weld around the edges, and provide that all-important finishing touch to the handrail.

Clean lines

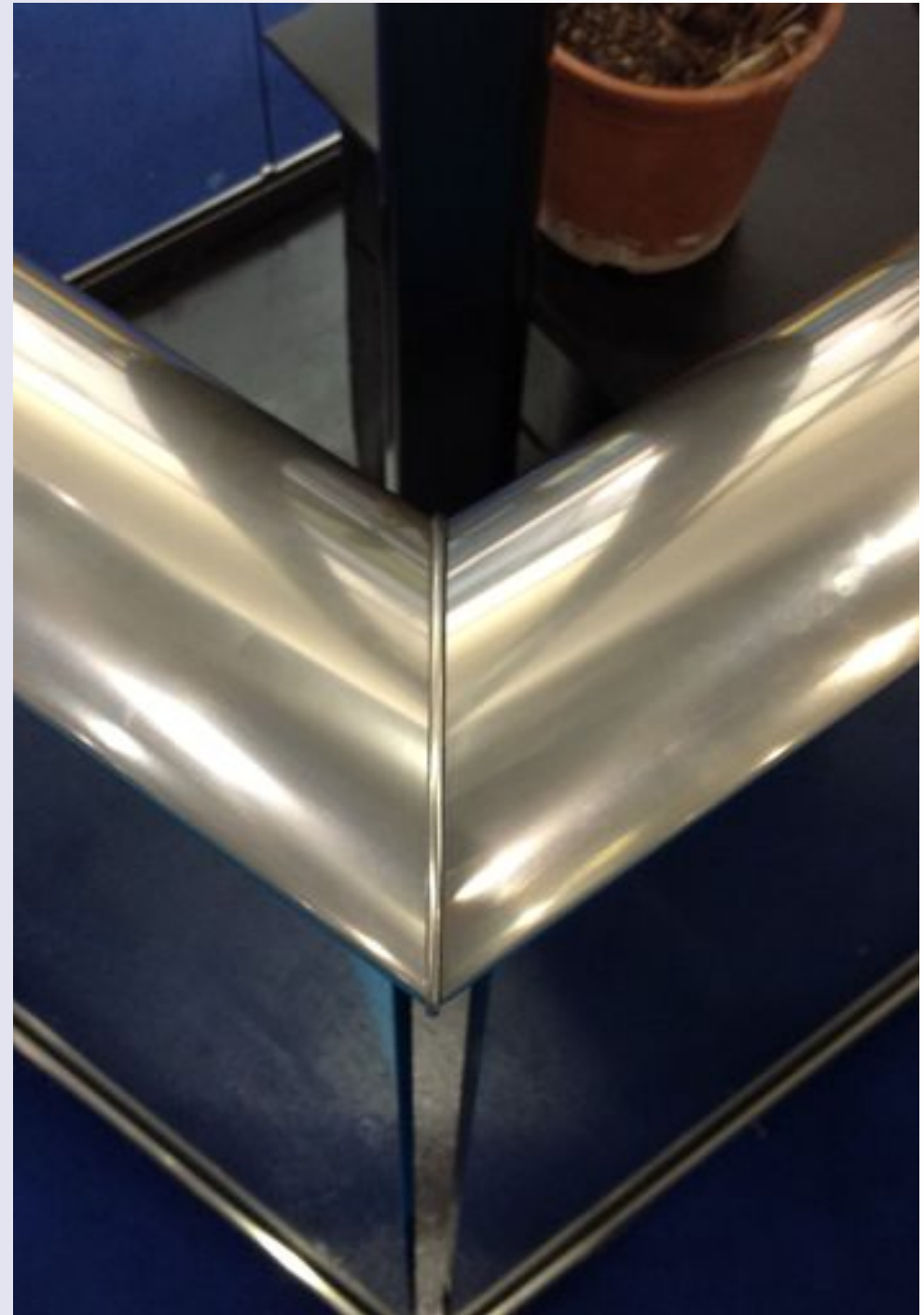
Balcony Systems is renowned for the attractive clean lines of its balustrading. Glass panels are diamond polished on the visible vertical edges. The panels are securely fixed between the top and bottom rails, with no need for clamps or clips to interrupt their clear beauty.

Simple to install

The Balcony System was designed over many years from onsite experience and therefore installation of both external balustrades and Juliet balconies is straightforward thanks to the experience enhanced efficient design of the systems.

Easy to understand documentation and instructions coupled with installation videos give very clear and easy guidance on correct installation.

Full technical support is also provided, if needed. Indeed, there are many examples of where our customers have fitted our products themselves!



Clearly better corners

Providing the vital safety and security overlooking a swimming pool with clean and clear lines, this stylish outdoor balustrade also boasts no corner posts for support.

Miriam and Dominic Nevill are delighted with their solution from Balcony Systems that replaces old railings and retains beautiful views to Ashdown Forest from their home at Crowborough, East Sussex.

“With a 20 foot drop to the pool below, it was essential to have a barrier. Stone was one option, but then we would have lost the view,” commented Miriam. “The clear glass balustrade is modern and looks fabulous. Because there are very few posts, including no need for a corner support, there is little to obstruct the view.”

Measuring 10 metres in length with an anodised silver handrail, the balustrade attracts compliments from all who see it. The couple are considering further glass balustrading from Balcony Systems to replace the rest of their garden railings.

Miriam added: “Having found Balcony Systems on the internet, we visited the company’s premises a few miles away to take a closer look at the product range before deciding their balustrading was the right choice for us.

“It’s also very easy to take care of; we’ve only had to wash it once in two years. Now that’s what I call low-maintenance!”

“It’s also very easy to take care of; we’ve only had to wash it once in two years. Now that’s what I call low-maintenance!”

“The clear glass balustrade is modern and looks fabulous. Because there are very few posts, including no need for a corner support, there is little to obstruct the view.”

Internal glass balustrade adds 'wow' factor



"I had considered structural glass, but Balcony's anodised aluminium handrail gives a better feeling of security and matches the interior décor."

For property renovator Alexa Collins, internal glass and aluminium balustrading from Balcony Systems created the 'wow' factor at her show-stopping self-build home which was featured on the BBC's To Build or Not to Build series.

The balcony makes a dramatic, light-enhancing statement in a central 'double-height' area at the back of her self-build five-bedroom Buckinghamshire home.

"It's the 'wow factor' of the house, linking the upstairs and downstairs while reflecting the open-plan

nature of the house," says Alexa. "I had considered structural glass, but Balcony's anodised aluminium handrail gives a better feeling of security and matches the interior décor."

Alexa surveyed and measured for the balustrade herself. She was also

impressed with Balcony's technical team, whose advice made the installation as smooth as possible. "The balustrade is much-admired by all who see it and people rush up to it. They feel safe leaning over and having a chat. It's so solid and well put together," she adds.



Balcony Views Magazine welcomes new subscribers

With a circulation of 25,000, subscribing to Balcony Views Magazine is the best way to keep up-to-date with our new and innovative products and designs.

To receive your own copy of Balcony Views go to:

www.balconyviews.co.uk

or email:

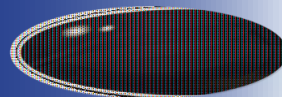
sales@balconette.co.uk

or tel:

01342 410411

or write to:

**Balcony Systems Solutions Ltd,
Unit 6 Systems House,
Eastbourne Road,
Blindley Heath, Surrey RH7 6JP**



BALCONY views
magazine

Balcony privacy and wind break screens

Many balconies, terraces and upper floor amenities are required by local planning authorities to include opaque 1.8m panels that will restrict the views from the balcony or terrace in the direction that these may infringe on the privacy of neighbouring properties.

It seems there is an endless battle between allowing the consent to provide maximum views from the balcony to standing guard and protecting the privacy of neighbouring properties and their users. However we have seen that local authorities are not lenient on this point and that this rule is quite strictly enforced. Many balcony projects include, as part of the balcony screens, a section that has a 1.8m high opaque privacy screen.

Implications of privacy screens

Normal balcony balustrade height is 1.1m and adding a privacy screen to a

balcony may seem like a simple issue of just adding 0.7m of glass to the railings to keep everyone happy. This is certainly not the case.

Balcony railings and balustrades are designed to bear certain loads. The height factor has quite dramatic implications on the loads. At 1.1m height the effect of wind loads on the balustrades is fairly moderate, but when we go up to 1.8m height the wind load factor becomes a major factor requiring extra consideration and design. This is further affected if the screen is very long in length – such as more than 5.4m, at which point the loads are increased again.

Glass type and glass coating

There are a few options of glass finishes for use within a privacy screen;

- **10mm sandblasted glass**
Sandblasting is a process that involves shot blasting of sand by a robotic arm on 10mm clear glass at a high velocity in a self-contained cubicle. This creates a coarse opaque surface on the face of the glass. Sandblasting produces a 'whiter' finish that offers more privacy and remains opaque even when wet.
- **10mm "Satin" glass**
This type of glass is created using acid

to etch the surface of glass. Satin glass is manufactured using a proprietary acid-etching process where acid is applied to the glass surface, actually dissolving part of the glass. The result is a smooth, flat, satin-like decorative surface that disperses light and transforms transparent float glass into translucent glass. This forms a 'velvet smooth' surface which has a high light transmission yet is still opaque. When the glass is wet it becomes temporarily almost clear until dry again.

• **Laminated opaque glass**

Opaque laminated glass has an opaque white PVB (plastic) interlayer that makes the glass obscure and smooth on both sides.

The laminated glass option is more expensive than the sandblasted or satin solution, but it also offers better acoustic properties. Laminated glass should be installed with all edges encapsulated as exposed edges present a risk of delamination of the laminated panels.

Both the sandblasted and satin types require extra care as the surface of the glass is more susceptible to attracting surface dirt, grime and other contaminant build-up than regular clear glass.

It is advised to apply these types of finishes with a hydrophobic protective coating to keep them clean and make them easier to maintain.

Other usage for 1.8m high panels

1.8m high screens are versatile and their use is not limited to just privacy screens. Higher glazing screens, clear or opaque, are often used in other locations as wind breaks, acoustic panels and other applications where the standard 1.1m high railings will



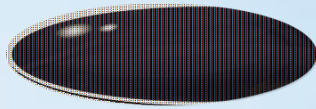
Design criteria and materials

The subject of calculating the required loads on privacy screens has to take into consideration several variables such as wind speed within the geographical location of the site, altitude of the site, effective building height and distance from the coast.

The privacy screen posts and fixing plates will need to be substantial enough so that they can support these loads under severe weather conditions, while taking into consideration the aesthetics so the resulting screen does not look like a battleship mast.



just not suffice. In all these cases, the same considerations as outlined above must be taken into account at the design stage so they can bear the brunt of the elements while fulfilling their ultimate purpose on site.



Balcony Systems

Sophisticated Solutions

Clearly The Best

Balustrading that has:

- Anodised or powder coated aluminium that **WILL NOT RUST**
- **10 year guarantee on finishes - even on coastal locations**
- **Bespoke products made to your exact measurements. Available in 4 standard colours: Silver, bronze, white and our proprietary Royal Chrome anodized finish**
- **NO corner posts, NO unsightly clamps and minimal posts**
- **10mm toughened glass that is available with self-cleaning glass coating on both sides of glass – inside and outside your balcony.**

To discuss your requirements, get a free quote or to place an order please contact

E: sales@balconette.co.uk

Tel: **01342 410411**

or go to our online shop

www.balconette.co.uk



Glass Juliet balconies are the clear choice

Over the last ten years since Balcony Systems introduced its ground-breaking range of good-looking glass and aluminium Juliet balconies to the UK marketplace, the company has succeeded in challenging people's perceptions of this type of balustrading product.

As a stylish, simple and surprisingly affordable solution, it is now available to a far wider range of purchasers who are recognising the benefits it offers, compared to traditional alternatives such as timber or steel.

Glass Juliet Balconies under £200

Costing from well under £200, elegant Juliet balconies are low-maintenance with clear glass to keep the view and maximise light to the interior. There are no unsightly railings or posts to obscure the view.

Glass is also a more long-term cost-effective choice than other materials, such as steel, as there's no need for regular painting or repairs. This means they work out cheaper over their lifetimes compared to alternative balustrading materials. Being corrosion-resistant, they are ideal for coastal and city environments.

Innovative design using the handrail to support the 10mm toughened glass means there are no vertical posts or clamps to spoil the view or the Juliet's clean lines.

It replicates the classic look of structural glazing, but at a fraction of the cost.

28 models available immediately "off the shelf"

The Juliet balcony range from Balcony Systems includes 28 different standard models, with custom sizes also available on request. Standard sizes range from 1,280mm up to 2,840mm with handrails available in four attractive finishes; white, silver, bronze and the shiny Royal Chrome that replicates the look of stainless steel.

Bespoke sizes and colours can be supplied for bulk orders to suit any client specification and budget. Glazing specifications include laminated or toughened glass, plus a choice of tinted shades if required.

Custom Juliets

Where customers require a larger Juliet balcony than our largest standard size, then a custom-made one can be specially manufactured in any of the four handrail finishes.



Enhancing levels of natural light and a feeling of spaciousness are invariably top of anyone's wish list when it comes to homebuilding or renovation projects. While the addition of first-floor French or double doors is a popular way of achieving these goals, such installations also require a security barrier.

Eco-friendly Self-Cleaning glass

Introducing a self-cleaning glass coating option has further increased the appeal of these already low-maintenance products. Applied to both sides of the glass, the coating repels water, dirt and grime faster to keep the Juliet balcony looking clean for longer. This reduces the need for regular cleaning or the use of harsh chemicals. An occasional wipe down with a wet cloth is enough to keep the balustrade looking as good as new.

From the single Juliet customer to the major housebuilders

It's not just the canny buyers from the major housebuilders who have discovered Balcony Systems' Juliets. Private self-builders and renovators have also realised why our glass Juliets tick all the boxes for them.

The following case studies highlight how these Juliets enhance many different types of properties and just as importantly, what the customers say.

Clearly the seaside choice

*“Being on the coast,
we get an enormous amount of salt
thrown at the house so it was critical to
use the best product for the job*

For Roger and Judith Boon, two glass and aluminium Juliet balconies were the ideal solution for their major home conversion project just metres from the sea at Llandudno in North Wales.

Transforming their bungalow into a house introduced first-floor French Doors that take advantage of spectacular mountain and sea views on two sides. Rather than retain an existing problematic external balcony, the couple decided on the low-maintenance Juliet option.

“Being on the coast, we get an enormous amount of salt thrown at the house so it was critical to use the best product for the job,” said Roger, who found Balcony Systems on the internet.



***“Balcony ticked all
our boxes in terms of
offering a lightweight,
yet strong product
that is guaranteed to
withstand the harsher
seaside climate... and
the price was much
lower than for stainless
steel balconies.”***

“Balcony ticked all our boxes in terms of offering a lightweight, yet strong product that is guaranteed to withstand the harsher seaside climate. We also wanted clear glass to keep the views and the price was much lower than for stainless steel balconies.”

He added: “With their white powder-coated handrails and clear glass panels, the Juliet balconies match the house perfectly. And of course, we keep those all-important and wonderful views, so we’re very pleased.”

Tripping the light fantastic with Juliet Balconies

Adding light to a property can transform its appearance, as well as enhancing its use and the general well-being of its occupants. Glass and aluminium Juliet balconies from Balcony Systems help homeowners to achieve these aims, as Nigel and Jo Spelman from Droxford in Hampshire discovered.



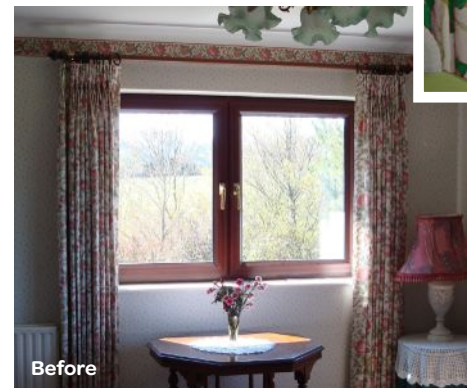
Before

By modifying two standard upstairs windows in their 1990s 'upside-down' home to create French windows with glass Juliet balconies, the couple can take full advantage of glorious countryside views.

Having felt the upstairs living rooms were 'out of touch' with the garden and the south-facing views, they decided to



After



Before

cut down the brickwork and let in the light with floor to ceiling glazing. Researching balconies led them to Balcony Systems and a successful outcome for their project.

"Whether standing or seated our field of vision now extends from our garden below through to the distant horizon and the sky," says Nigel. "This has improved the look and our use of the house tremendously, particularly as our principal reception rooms are on the first floor. As we were originally planning to



After

have a wrought iron balcony, having seen the excellent result in glass we're very glad we went down that route."

He continues: "We are very pleased with the Balcony product and absolutely delighted with how the new full length windows with their glass Juliet balconies have worked out. We were hoping that the balconies' aluminium handrails would not appear obtrusive and any concerns have proved unfounded."

The couple also chose Balcony Systems' self-cleaning glass coating for both Juliets and find this a great maintenance-saving bonus in terms of reduced cleaning.

Future plans include an extension at the back of the house with a first-floor sweeping glass-sided veranda with walkway linking the upstairs of the house to the upper level of the garden.

Complementary colours

Three Juliet balconies supply the necessary security to first-floor French Doors and provide the perfect finishing touch to David and Zelda Gunn's stunning newbuild home in rural Bedfordshire.

Bronze hand rails were specified to complement the Antique Gold external rendering on the four-bedroomed property, a Scandia Hus constructed on the site of a now-demolished old cottage. The mellow colour was chosen to blend with a 450-year-old timber-framed house opposite.

"We've got some fantastic views from the house, so we liked the idea of glazed balconies to keep the views," explained David. "Clear glass works very well for us as it doesn't impede the view and we're

delighted with the result."

Balcony's team worked closely with the builder on the specification for the wall fixings and the installation of all three Juliets progressed smoothly.

Low-maintenance is another added benefit for the couple, as David adds:

"Cleaning the glass from the inside is so easy; we're considering purchasing Balcony's self-cleaning glass coating sachets so the outside cleaning is reduced too."



"Clear glass works very well for us as it doesn't impede the view and we're delighted with the result."

"Cleaning the glass from the inside is so easy; we're considering purchasing Balcony's self-cleaning glass coating sachets so the outside cleaning is reduced too."



Clear glass Juliet balconies take care of the views

Castleoak, a leading care sector development and construction company, specified clear glass Juliet balconies from Balcony Systems for its latest care project to make the most of magnificent lakeside views in South Lanarkshire.

Stylish Juliet balconies with aluminium handrails finished in Royal Chrome met the architect's precise balustrading specification for French Doors in 20 remodelled extra care apartments at The Retreat, Auchlochan Retirement Village near Lesmahagow, south of Glasgow.

It is the first time Balcony Systems has worked with Castleoak, whose project in Scotland was its thirteenth for MHA, one of the UK's leading not-for-profit care providers.

Completed in August 2011, the year-long project also involved the refurbishment of the previous atrium area into a communal lounge and four premium apartments on the second floor.



The Juliet balcony system worked on our building extremely well"

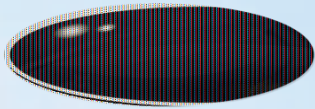
"Working with Balcony Systems was straightforward. All of the technical questions were quickly resolved and telephone calls returned immediately."

Castleoak Project Surveyor Sean Coyle said the Balcony Systems' product was chosen as it matched the architect's design and allowed light into the property, whilst retaining unrestricted views across the lake and landscaped grounds.

He commented: "The Juliet balcony system worked on our building extremely well. Auchlochan was the first project where we used the Balcony Systems product and after Balcony provided a quotation during the estimating process, it was a natural progression to follow this through to an order."

Sean added: "Working with Balcony Systems was straightforward. All of the technical questions were quickly resolved and telephone calls returned immediately."





Balcony Systems

Sophisticated Solutions

Clearly A Better View with Juliets that have:

- Anodised or powder coated aluminium that **WILL NOT RUST!**
- 10 year guarantee on finishes - even on coastal locations!
- 10mm toughened glass that is available with self-cleaning glass coating on both sides of glass inside and outside your balcony
- Stock Juliets in 7 different sizes and 4 colours readily available, 5 working day delivery when ordered on-line
- Custom made Juliets - made to your exact measurements

To discuss your requirements, get a free quote or to place an order please contact

E: sales@balconette.co.uk

Tel: **01342 410411**

or go to our online shop

www.balconette.co.uk



Balcony around the world

It's not just UK properties that benefit from Balcony's high quality products; they are exported around the world where they enhance all types of buildings – and their owners' lifestyles – in many different climates.

Here are some examples of how clear glass balustrading and curved patio doors can make that all-important difference to properties across Europe and beyond.

Curved door 'wows'

Paxos, Greece

A three-panel curved patio door from Balcony Systems measuring 4.5 metres wide makes the most of spectacular sea views from this re-built windmill on the beautiful Greek island of Paxos.

The windmill, with its first floor living room, stands in the grounds of owner Chris James' villa and is used as a guest cottage. Chris found Balcony Systems on the internet and was immediately impressed with the stunning patio doors.

He says: "I found Balcony very helpful and professional. I had the doors delivered to a UK address and then shipped to Paxos. The doors are a

stunning addition to the building. Giving the impression of one large window, they certainly add the 'wow' factor to the windmill."

"I found Balcony very helpful and professional. I had the doors delivered to a UK address and then shipped to Paxos.



Looking gorgeous in Ghana

Businessman Kola Sonola fell in love with Balcony's curved patio doors and balustrading after visiting the Grand Designs exhibition in the UK a few years ago.

He decided they would be a perfect fit for the dream home he is building

in Accra, Ghana for which he has purchased 55 metres of balustrading, plus two three-metre wide curved patio doors and fixed lights.

Balcony for sunny South of France

Balcony's products are perfect for sunny seaside locations as this smart balustrade installed in the South of France shows.

The 15-metre balcony, with anodised silver handrail and laminated glass panels, enhances a holiday home near Monaco belonging to David Hinchliffe.

"It's a good product and represented fair value for money," commented David, Managing Director of a Yorkshire-based commercial and residential development firm.

"Balcony is a good company to deal with and their people were very obliging. The balustrade is not only a practical safety solution and providing shelter on windy days, but is a modern attractive feature to the terrace," he added.

Balcony in Sweden

In Sweden, Balcony's products have been installed in two projects. Glazing contractor GMPAB fitted a Visioglide 100-W6F curved patio door measuring nearly eight metres across and 2.73 metres in height. The bespoke home had been designed around these spectacular doors that add light and a feeling of spaciousness to any building.

For additional insulation to combat the cooler climate, the aluminium frames

feature Pilkington's Low-E argon-filled units to bring the overall U-value down to a thermally-efficient 1.5 W/m²K.

A U-value is the measurement of the rate of heat loss through a material, so the lower the U value, the less heat that will be needlessly lost.

Another Swedish customer is Andrew Piper who has bought 10 metres of balustrading for an internal balustrade.

Balcony on a Spanish island

And on the Spanish island of Majorca, developer Kirk Whitehouse chose 15 metres of Royal Chrome balustrading with blue tinted glass for a home at Caliva.



The future in glass protection is here - Glass that keeps itself cleaner

We find glass everywhere in our everyday life, both inside and outside our home - doors, windows, balustrades, conservatories, façades of buildings, shower enclosures, the list goes on. While every other element of the building has surface protection; steel is galvanised and painted, aluminium is powder coated or anodised, and concrete is rendered or coated, how is it that glass is just left to deteriorate?



Understanding the problem

Have you ever experienced glass stains or streaks on glass that, no matter how hard you try to clean them, just will not budge? Why do shower enclosures get dirtier and more opaque over time? Why does it seem impossible to remove finger prints from sandblasted glass?

To understand this problem we need to zoom into the surface of glass.

Now glass may seem like it has a smooth surface, however the microscopic surface topography of glass is actually uneven and pitted with peaks and valleys. This surface architecture is the hidden reason behind many glass-related problems.

Glass surface naturally attracts water (hydrophilic), meaning that when water makes contact with the surface of glass the water will tend to spread out and form a thin sheet on the surface. When the water evaporates, all the mineral deposits it contained are left on the surface of the glass. These deposits, which include calcium, salt, heavy metals and a wide range of minerals, together with dust, grime, bacteria, soap scum and a long list of contaminants embed themselves into these pits and valleys inside the surface of the glass.

These elements get lodged, building up over time slowly making the glass surface more and more opaque, dirtier and harder to clean.

This phenomenon is amplified on glasses such as etched or sandblasted glasses; this is because etching or sandblasting will make the surface even coarser, rougher and more prone to this problem than regular glass.

Anyone who has handled sandblasted glass will tell you that removing finger prints or dirt from this type of glass is a real nightmare.

“Glass may seem like it has a smooth surface, however the microscopic surface topography of glass is actually uneven and pitted”



Nature – showing us the way

It is curious how we find in nature some of the most advanced technologies that only in the last few years we, mankind, have been able to copy or imitate.

Some plants and creatures have created a brilliant way of staying clean.

For example, we have the lotus leaf that possesses very unique surface architecture; this

architecture makes the surface of the leaf super-hydrophobic, which means super-water-repellent.

Water that comes into contact with the leaf curls up almost into a ball, leaving an absolute minimum amount of contact with the leaf's surface. Not being able to cling to the surface of the leaf, the water droplets will cling onto anything else on the surface, namely any dirt or dust. This dirt and dust on the leaf's surface gets washed off by these droplets leaving the leaf clean.

The solution – advanced glass protection

Inspired by the lotus leaf's self-cleaning technology we have created a unique and very durable coating for glass that actually transforms the surface architecture of glass, turning it from a hydrophilic (water-attracting) into a hydrophobic (water-repelling) surface.

Introducing BalcoNano® - advanced glass protection.

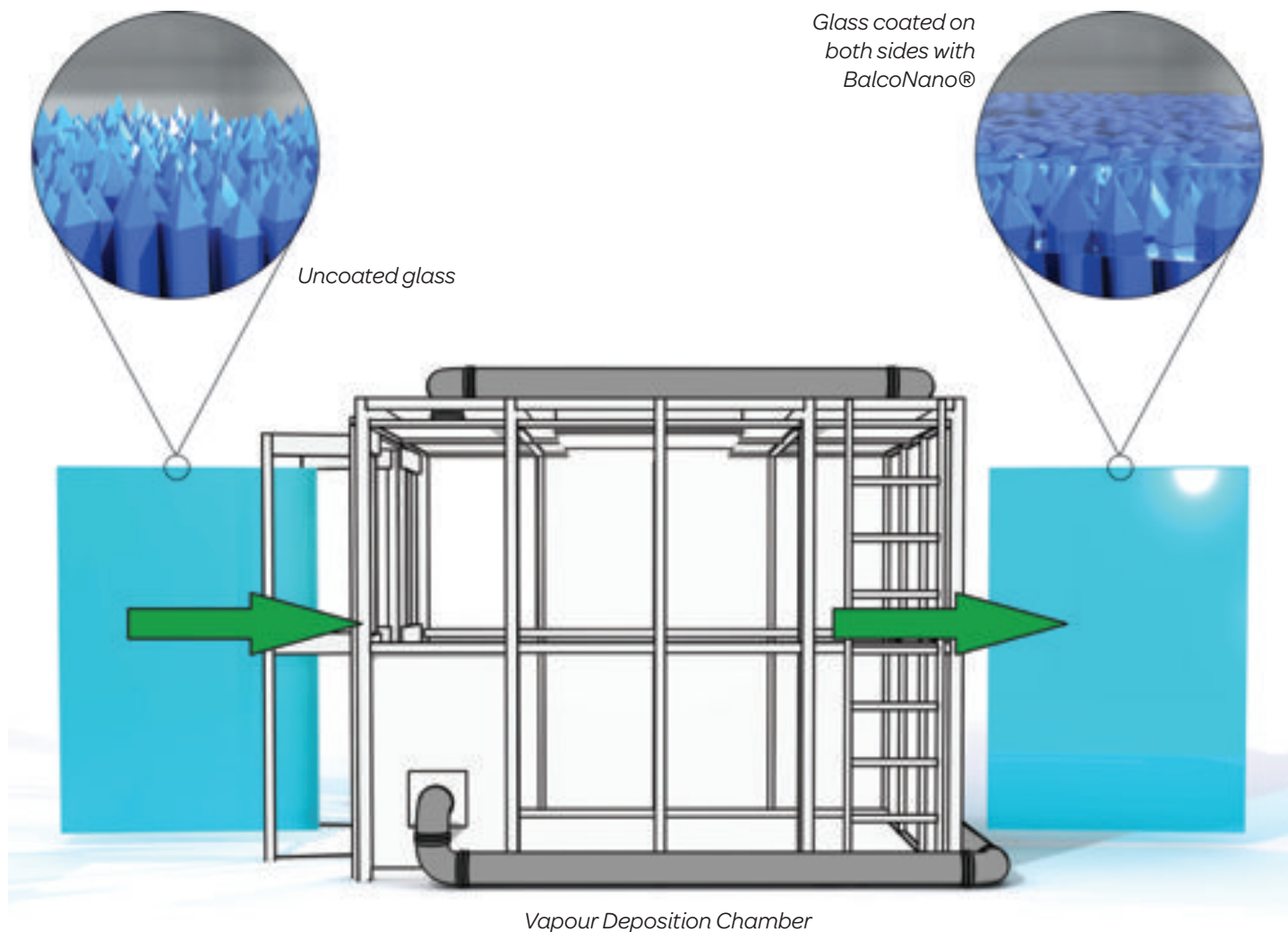
BalcoNano® works at a nano-scale level – a nanometre is one billionth of a metre, or one millionth of a millimetre (1 millimetre = 1,000,000 nanometres).

The BalcoNano® coating forms a hard, clear and super-smooth surface on the glass, covering entirely these problematic pits, peaks and valleys of the underlying glass surface. It transforms the surface into one that is charged and water-repellent.

Water that now comes into contact with the coated glass will not have access to the pits and valleys; water will sit high on the surface and the droplets will tend to curl up and quickly roll away.

Dirt, grime, calcium and other deposits will not be able to embed themselves into the surface and will wash away easily.

Teflon is a good comparison. Just as Teflon protects the underlying metal on a frying pan, so BalcoNano® protects the underlying glass surface.



How is BalcoNano® applied?

BalcoNano® is factory-applied shortly after the glass processing is complete. The glasses are deep-cleaned and then put into an enclosed chamber where they are exposed for a few hours to a series of vapours that form the unique

BalcoNano® surface.

The chamber application has an added benefit in that the BalcoNano® surface coating is created simultaneously on both faces of the glass, protecting the glass on the inside and outside at the same time.

Completely different to any

manual application, the chamber system is an ultra-efficient method that allows us to process large amounts of glass in every chamber cycle. The process is closely monitored by a computer that constantly checks temperature, humidity and air flow so the resulting

coating can be replicated exactly every time.

Using this method we can apply the BalcoNano® coating to the glass on our balustrades, glass Juliet balconies and curved glass double glazed units.

Can the BalcoNano® coating be applied to existing glasses?

As customers started to recognise the immense benefits of our self-cleaning glass coating, demand quickly followed for an on-site application for other glass products and elements so these too can enjoy the protective assets of the coating.

We rose to the challenge and created a “DIY self-application” pack for on-site application of the BalcoNano® coating.

BalcoNano® can now be applied to glass that is already installed using the sachets system. Each sachet pack contains the required two-part system, a special glass cleaner and the BalcoNano® coating. Each sachet contains a pre-soaked towelette ready for immediate use.

The sachets are designed to be used by the homeowner or professionals alike, enabling the unique coating to be applied to



existing glass in doors and windows, conservatories, shower enclosures and much more.

The coating chemistry works just as well on other silica-based products such as ceramics, porcelain, marble and stone. This means the sachets can be used to apply the coating to kitchen tops, sinks, ceramic tiles and many other areas.

Benefits of the BalcoNano® coating:

What are the benefits of the BalcoNano® coating? And is it worth the extra cost?

Here are some of the benefits:

- Protects the glass from lodging of dirt, grime and other contaminants
- Forms a hard water-repellent surface on the glass
- Reduces required frequency of cleaning by between 50% and 90%
- Eco-friendly & pocket-friendly - eliminates need for harsh chemical cleaners
- Increases impact & scratch-resistance
- Makes the glass surface graffiti-proof
- Keeps glass looking NEW for longer
- Completely transparent ensuring your enjoyment of the glass is not limited in any way
- Costing only £20 per square metre for coating to both sides of the glass, can you really afford not to add this?

Customer feedback on the BalcoNano® coating

Here are some testimonials from a few customers who have ordered the BalcoNano® coating on their balustrades or Juliet balconies.

Rhian and John Powell Jones of Harlech, North Wales, said:

"The self-cleaning glass definitely influenced our choice of balustrading as our newbuild house is in an elevated position overlooking the sea. It helps to reduce the amount of cleaning we have to do and it's easy to look after."

Nicholas Davies, from Blaenau, Gwent, commented:

"We've had a lot of work done on the house and, despite this, the Juliet balcony with self-cleaning glass is keeping very clean."

Peter Morley from Taunton, Somerset, reported:

"The self-cleaning glass does stay very clean. In the four months since the Juliet balcony was installed, I've not had to clean it."

Simon Toft, from Cornwall, said:

"We chose Balcony Systems for its most aesthetically-pleasing product that looks right for our eco holiday homes. Self-cleaning glass is a bonus as it will mean less cleaning!"

Bryan and Melanie Heslop from Tyne and Wear, said:

"Our Juliet balcony overlooks the sea, so the self-cleaning glass means lower maintenance and less cleaning because of the salt air."

Adrian and Catrin Hughes from West Wales, reported:

"We have noticed a difference with the self-cleaning glass coating. Our Juliet balcony keeps a lot cleaner compared to the windows and we keep the countryside views."

Paul and Margaret Ratcliffe from Sheffield, commented:

"We specified self-cleaning coated glass as it really does work; there's a noticeable difference compared to normal glass. It stays much cleaner as the water runs off it quickly. Being glass, the balcony lets in plenty of light and keeps the garden views."

Brett and Helena James from Margate, Kent, said:

"Despite being close to the sea, we've not had to clean the self-cleaning glass panels in the eight months since the balcony was installed."

Keith and Lorna Wattam from Sheffield, commented:

"The Juliet balcony was installed as part of a new bedroom extension and we've noticed the self-cleaning glass reduces our need to clean it."

Summary

As architects, developers, homeowners and self-builders become more knowledgeable and understand the reasons behind glass dirt retention the need becomes apparent for a cost-effective and durable solution.

The BalcoNano® glass coating presents an eco-friendly and durable solution that literally pays for itself; both in saved cleaning frequency & time, plus in eliminating the need for use of expensive chemical cleaners.



Balcony Systems
Sophisticated Solutions

Transform the ordinary into self-cleaning glass

The BalcoNano[®] glass coating presents an eco-friendly and durable solution that literally pays for itself; both in saved cleaning frequency & time, plus in eliminating the need for use of expensive chemical cleaners.

Option 1 - Factory applied
Option 2 - DIY sachets

To buy balustrading, juliets and curved patio doors with BalcoNano[®] already applied to the glass contact:

sales@balconette.co.uk

01342 410411

or go to our online shop at

www.balconette.co.uk

BalcoNano[®]
Advanced Glass Protection



(one sachet covers 1m²
of glass on one side)

To buy BalcoNano[®] DIY sachets:

order online at

www.BalcoNano.com

Tel: **01342 410411**

Fax: **01342 410412**

or write to:

Balcony Systems Solutions Ltd
Unit 6 Systems House,
Eastbourne Road, Blindley Heath,
Lingfield, Surrey RH7 6JP, UK

Details for Trade and Distributor
enquiries go to www.BalcoNano.com





Balcony Systems

Sophisticated Solutions

The cleaner that restores damaged and contaminated glass surfaces

The BalcoNano® Heavy Duty Glass Cleaner is a very strong glass cleaner for lodged dirt, grime and other deposits that cannot be cleaned with regular cleaners.



Transform the Ordinary into Self-Cleaning Glass

The BalcoNano® heavy duty cleaner is only the first step in restoring the glass. Once the glass surface is clean from the embedded contaminants, the BalcoNano® coating must be applied to protect the surface from future contamination.



BalcoNano®

Heavy Duty Glass Cleaner

To see the full range of BalcoNano® products or to place an order please visit

www.BalcoNano.com

sales@balconette.co.uk

Tel: 01342 410411

Fax: 01342 410 412

or write to:

Balcony Systems Solutions Ltd
Unit 6 Systems House
Eastbourne Road,
Blindley Heath,
Lingfield, Surrey RH7 6JP, UK

Details for Trade and Distributor enquiries go to www.BalcoNano.com



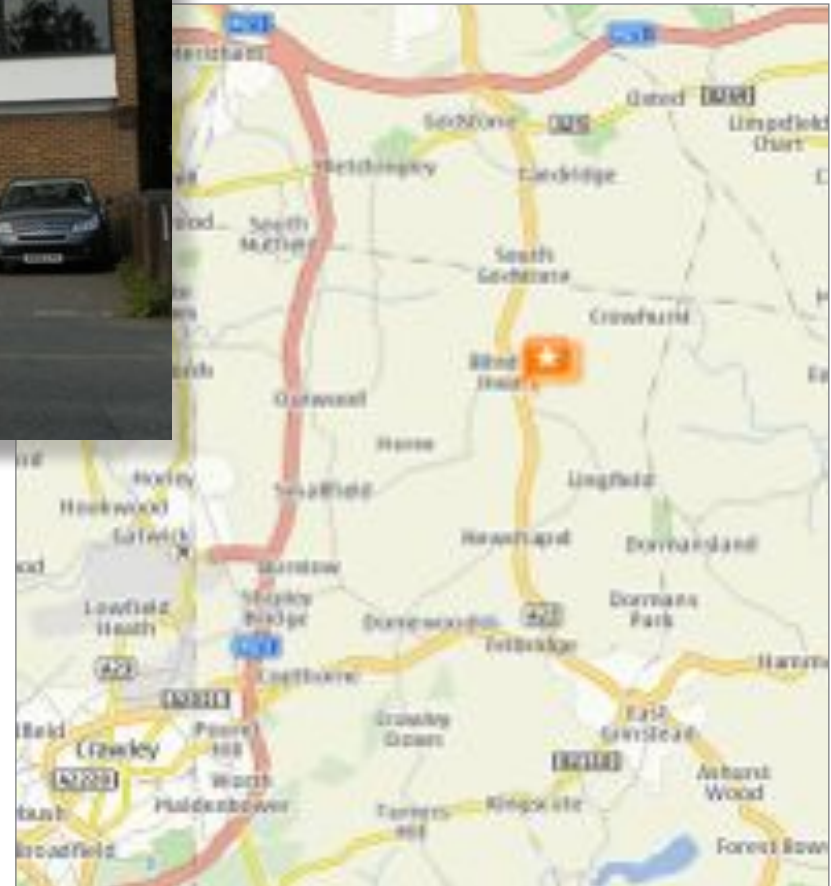
Balcony just gets bigger!

Originally based in the picturesque village of Forest Row, Balcony Systems rapidly outgrew these premises thanks to the popularity of its beautiful balustrading system and curved patio doors.



*“Visitors are welcomed
at Balcony’s offices where
they can see examples
of balustrading and
curved patio doors...”*

In October 2010, the company moved to its present location at Blindley Heath, near the famous Lingfield racecourse, on the border of Sussex and Surrey. The site is not only several times larger; it’s also far more accessible for visitors from across the UK and beyond being right on the A22 Eastbourne Road with easy access from the M25 and M23 too.

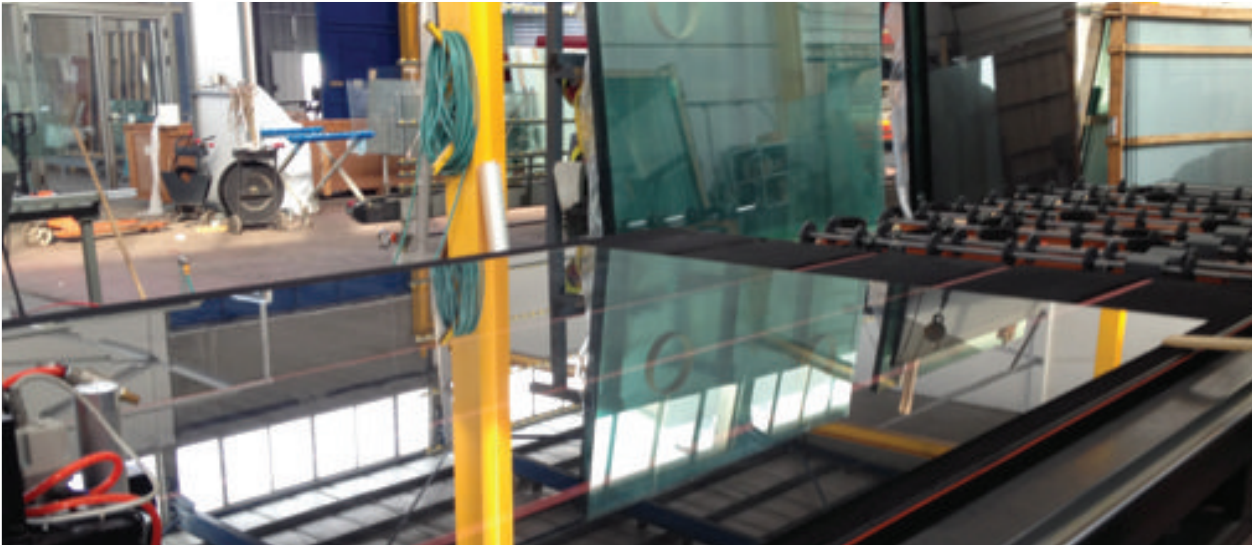
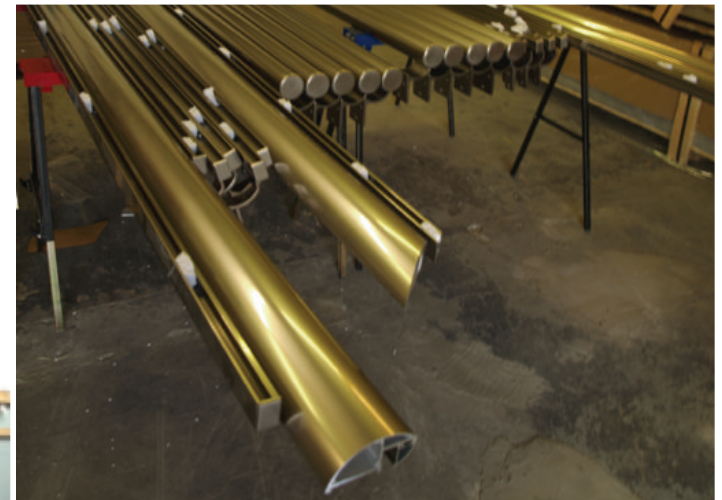


Located on the main A22 Eastbourne Road, Balcony's UK headquarters comprise warehousing and manufacturing areas together with spacious offices for the technical, sales and administration functions.

In recent months, the warehousing workforce has doubled to cope with the general overall rise in demand for products across the range. More people have also been recruited in the technical, manufacturing, packing and despatch operations.



“No two balustrades are the same; that’s why all balustrading is custom-made for each client”



“No two balustrades are the same; that’s why all balustrading is custom-made for each client,” explains Lesley Farrow, Balcony Systems’ Director. “After an order is placed, we send technical drawings to the customer so these can be approved before we start manufacturing. This way we can ensure that we produce exactly what the customer wants.”

Visitors are welcomed at Balcony’s offices where they can see examples of balustrading and curved patio doors, or even a demonstration of the self-cleaning glass coating, over a cup of coffee or tea. Opening hours are Monday to Friday from 9am to 6pm, with easy onsite parking.



Balcony Systems

Sophisticated Solutions

Career opportunities

Balcony Systems vacancies

To keep up with the increasing demand Balcony Systems is recruiting new personnel for the positions listed below

SALES -

requires technically-minded sales personnel who are capable of looking after clients of small projects on up to very large developments

TECHNICAL -

requires CAD technicians who are also capable of looking after all the clients of small projects on up to very large developments.

MANUFACTURING -

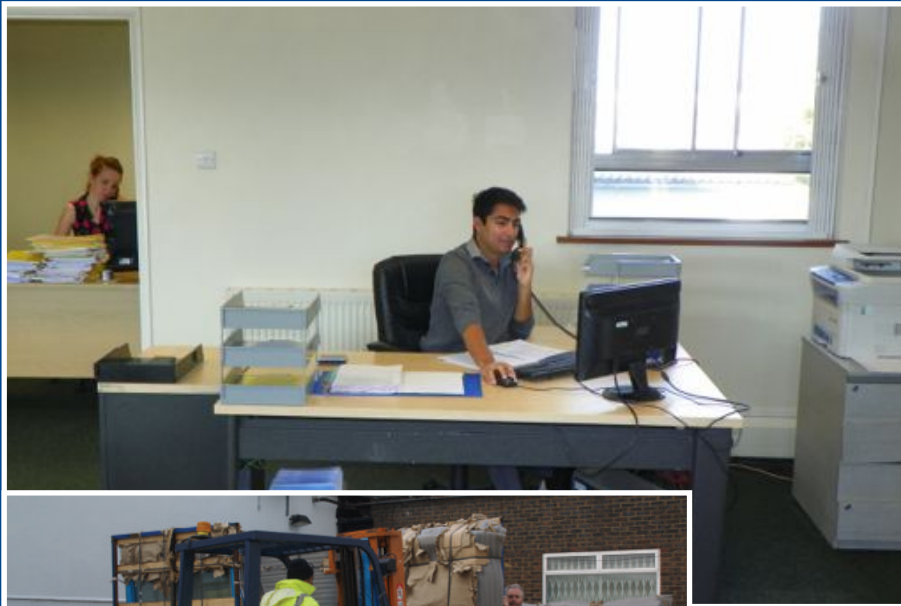
requires skilled fitters/assemblers who can read a technical drawing. The job requires cutting and assembly. The applicant must be physically strong.

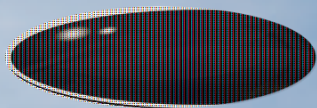
MANUFACTURING AND DELIVERY ASSISTANTS -

requires physically strong personnel for packing, loading, unloading and various other tasks in the factory.

If you are looking for a permanent position and are interested in any of the above positions, email your CV to:

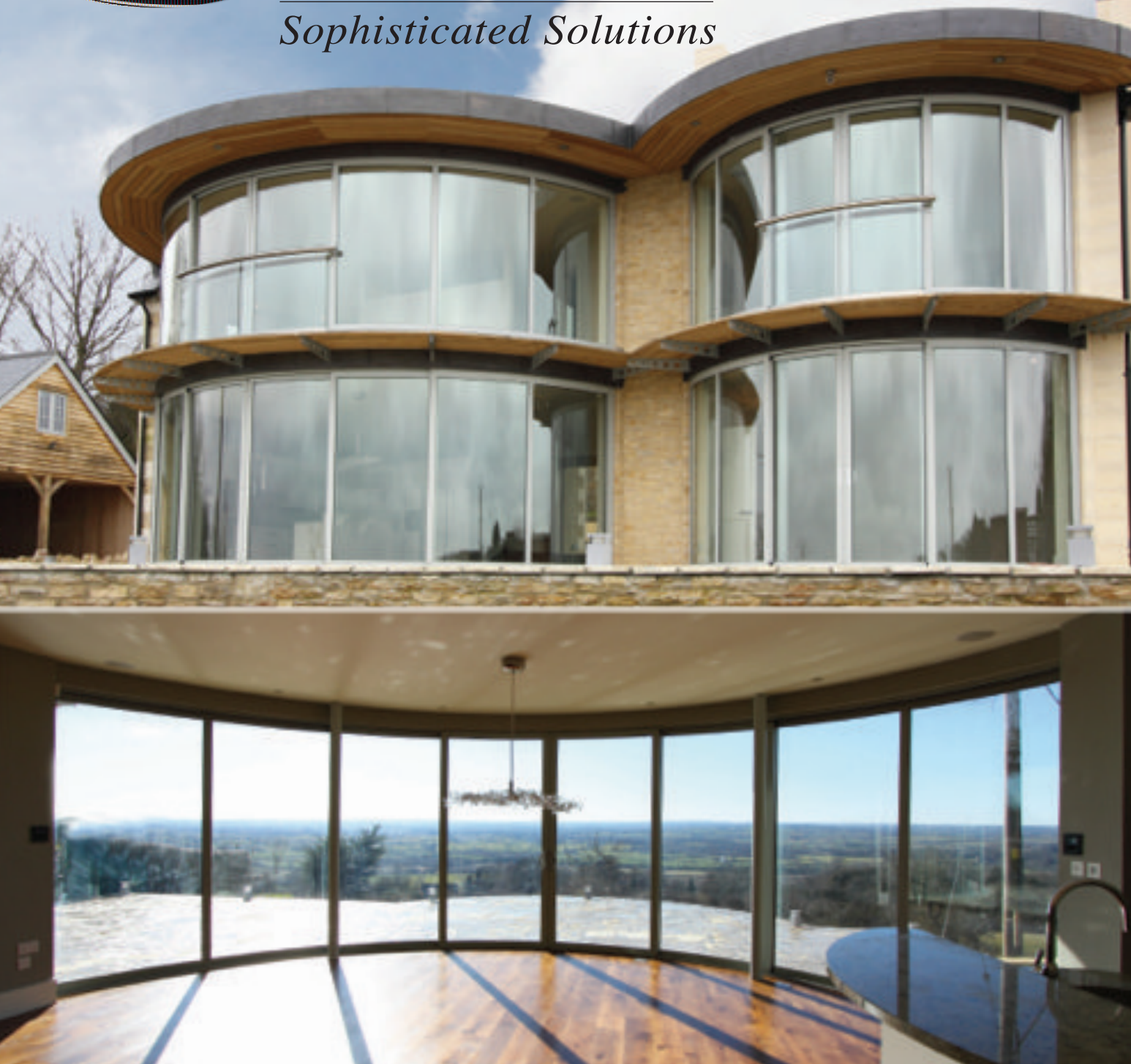
Jobs@balconette.co.uk





Balcony Systems

Sophisticated Solutions



Balcony Systems

We manufacture fantastic

GLASS BALUSTRADES

JULIET BALCONIES

**CURVED PATIO
DOORS**

For more information
please contact:

Tel: 01342 410411

www.balconette.co.uk

E: sales@balconette.co.uk

Balcony Systems Solutions Ltd
Unit 6 Systems House

Eastbourne Road
Blindley Heath
Surrey RH7 6JP

