

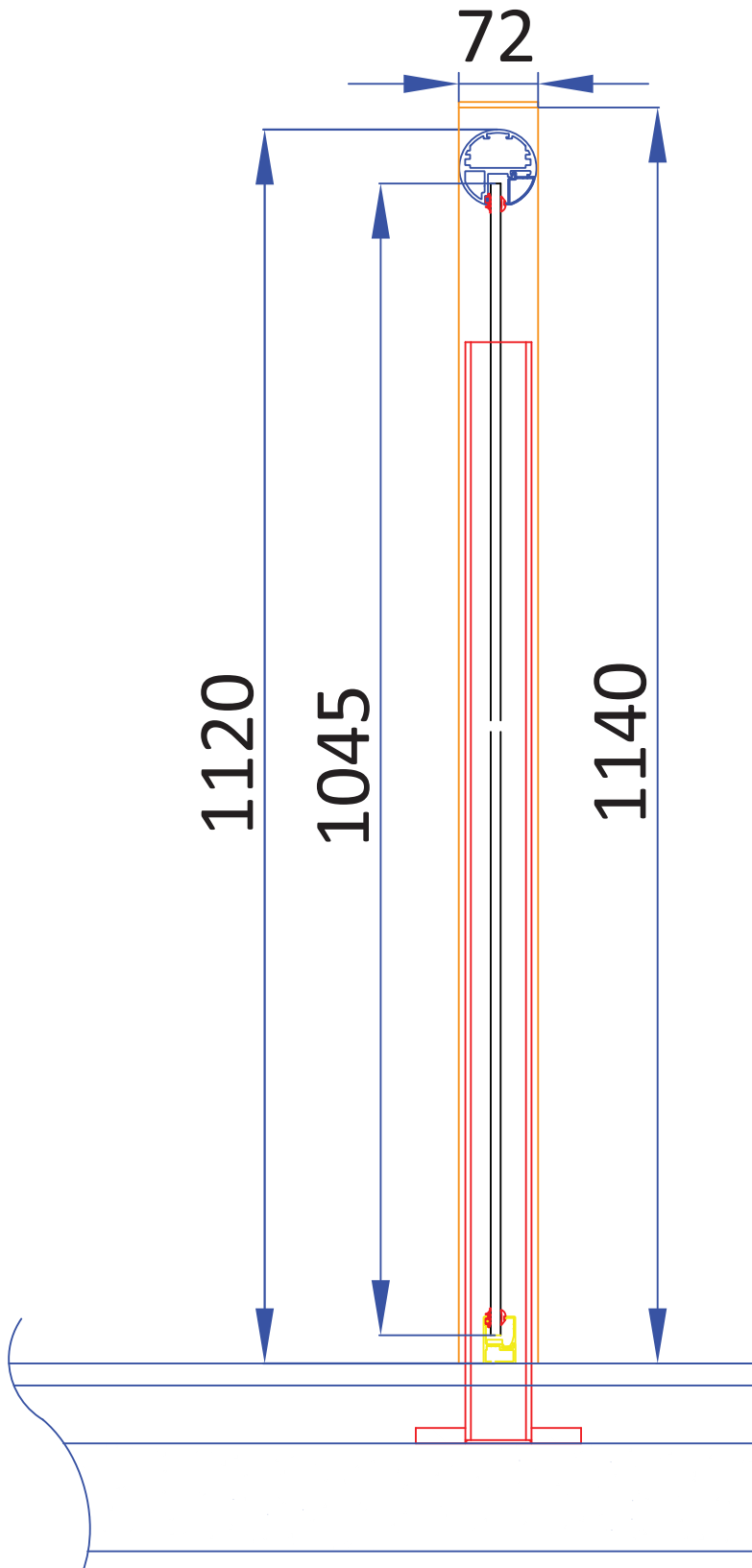


BALCONY

Balcony System 1 Installation Instructions

©Balcony Systems 2011

www.balconette.co.uk

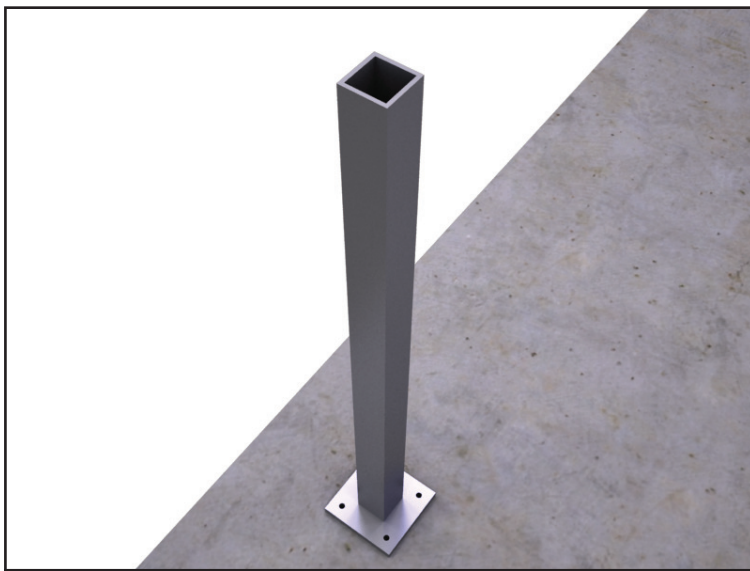


Tel: +44 1342 410411

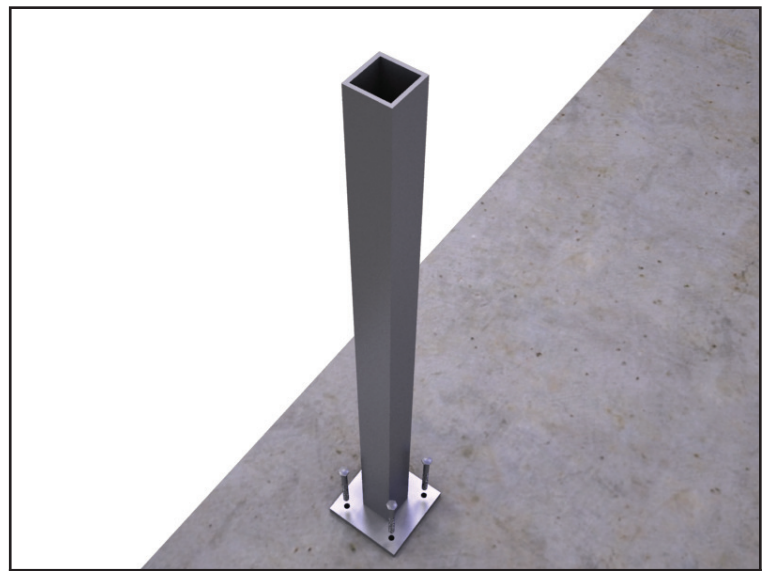
Fax: +44 1342 410412

Unit 6, Systems House, Eastbourne Road,
Blindley Heath, Lingfield,
Surrey, RH7 6JP, United Kingdom

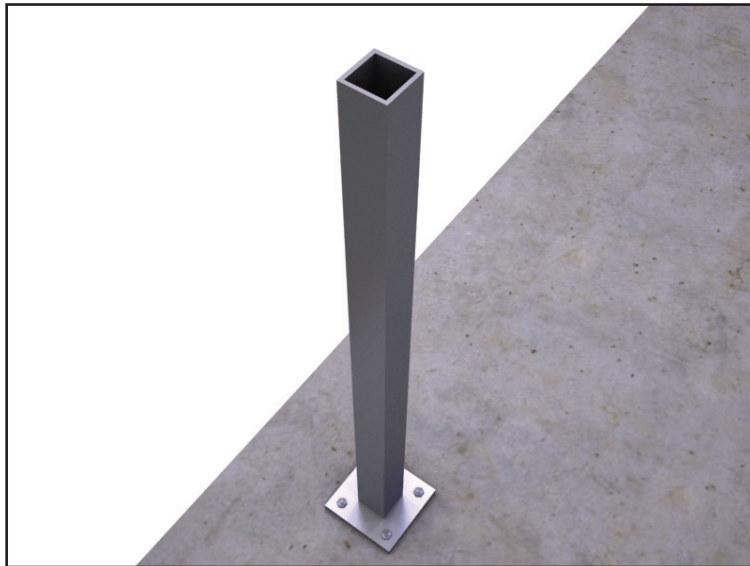
- 1) Check you have all the parts of the order.
- 2) Check the height of the glass
- 3) Check the height of the posts
- 4) Check both these heights against the required height on site making sure they are correct before assembling



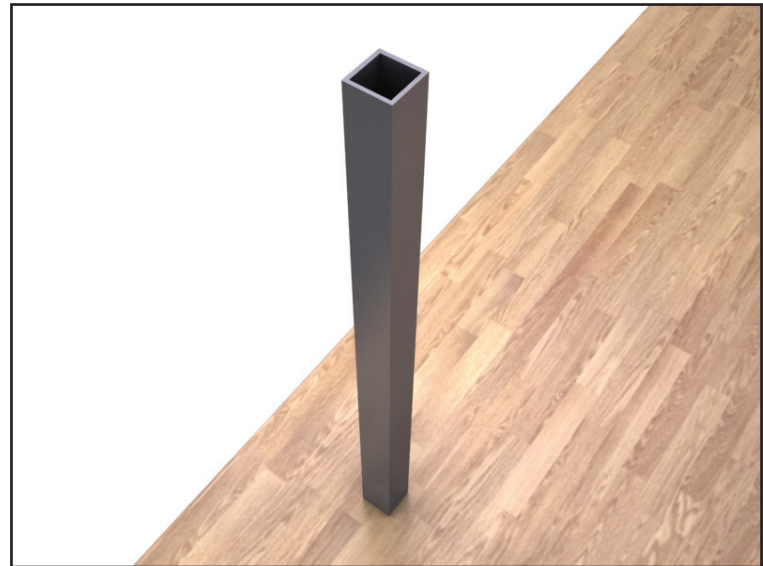
5 Position the primary steel post in the correct position



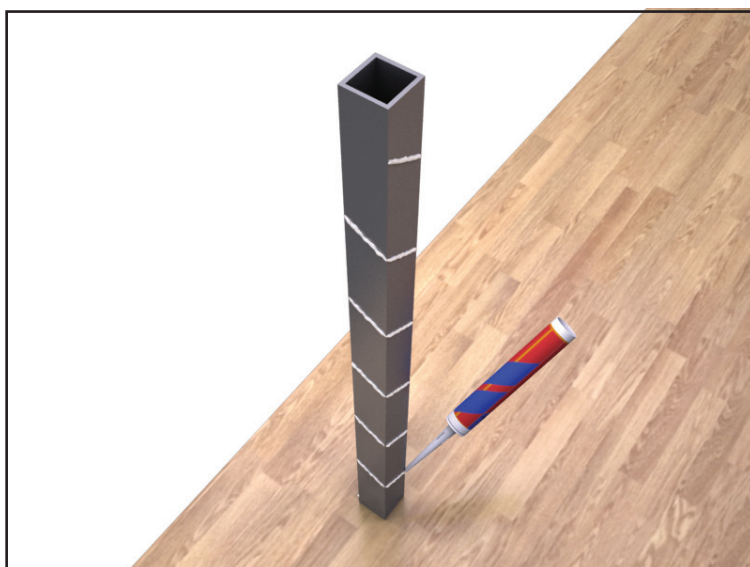
6 Use the appropriate fixings



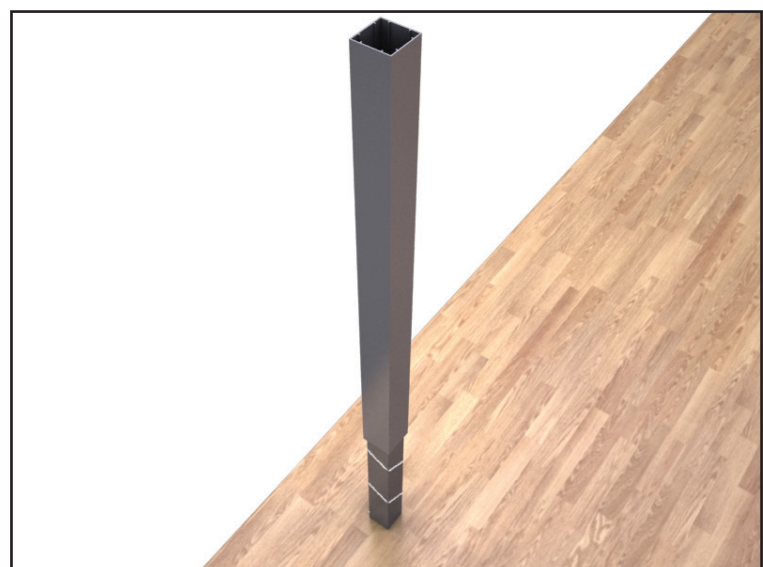
7 Fix the post firmly to the structure making sure they are perfectly vertical



8 Finish the flooring, decking, screed, floor finish etc. to the required height. This should conceal the base plate and bolts.



9 Apply a thick bead of silicone sealant around the primary steel post in a spiral fashion



10 Slide the system cover post onto the primary post



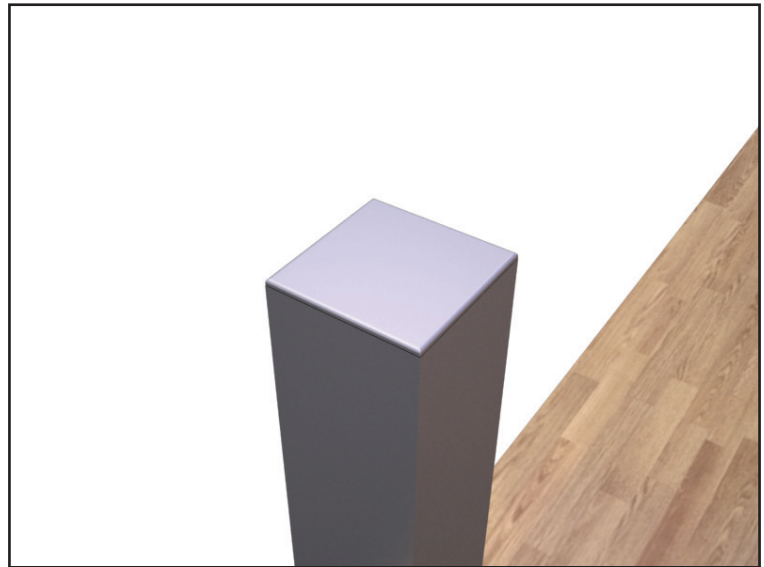
11 Ensure the cover post is in position



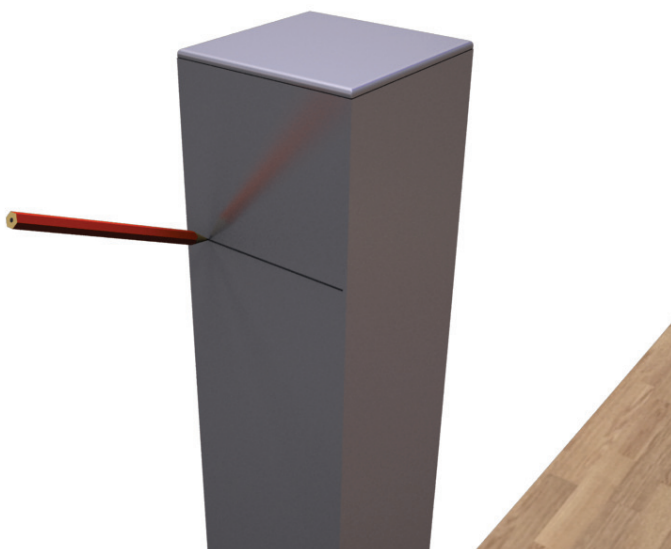
12 Prepare to place the cap



13 Inject an additional amount of silicone into the gaps between the steel post and cover post on the inside



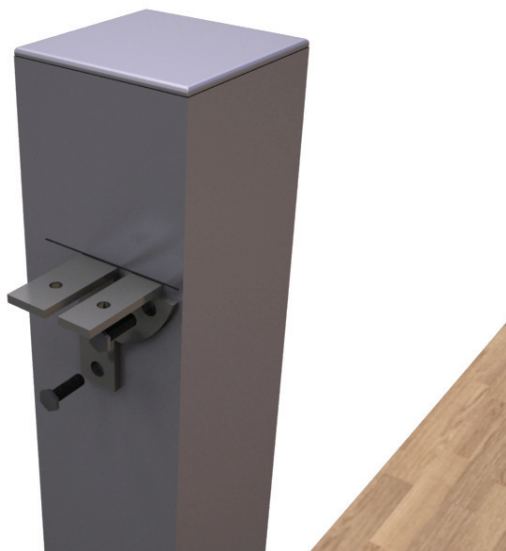
14 Cap the post using the end cap



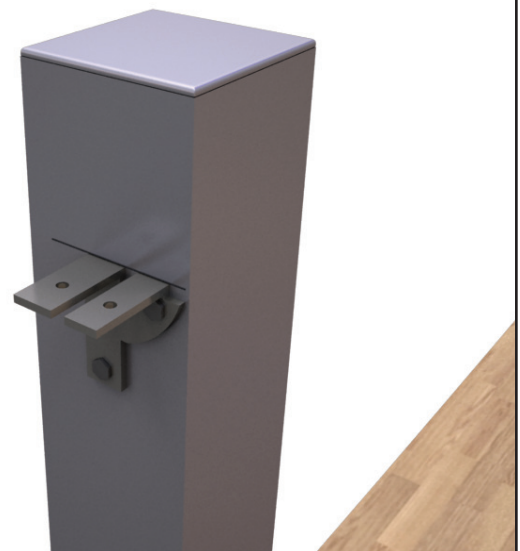
15 Using a level mark the position required to fix the handrail fixing bracket.



16 Bring the fixing bracket in place



17 Use the appropriate fixings



18 Secure the fixing bracket to the post



19 Bring the handrail into position



20 Drop the handrail onto the bracket



21 Drill 4mm holes through brackets into the handrail



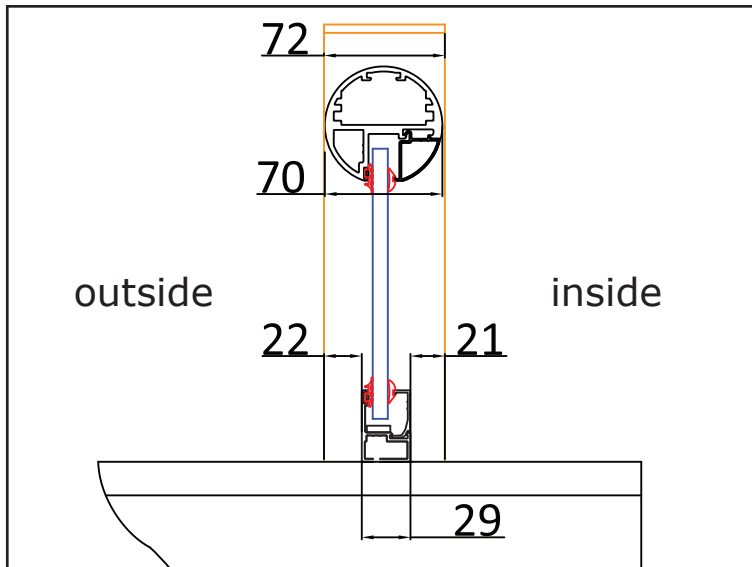
22 Secure the handrail to the bracket



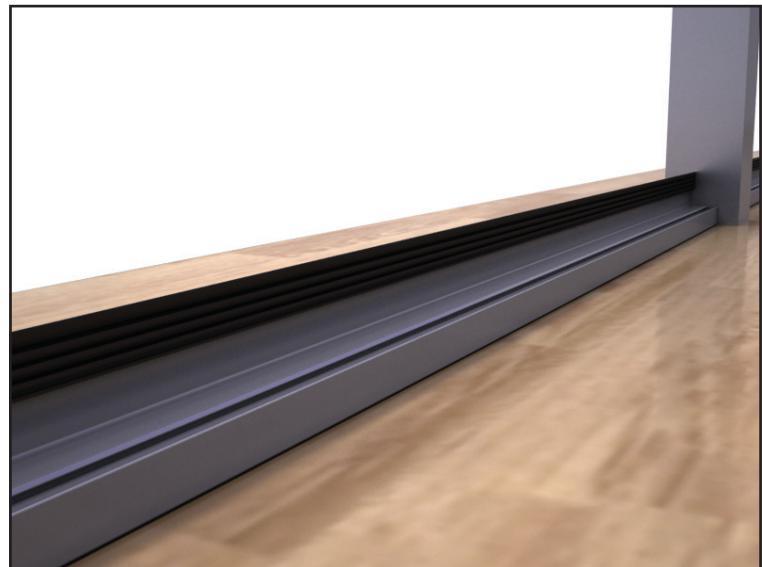
23 Repeat this step for all posts



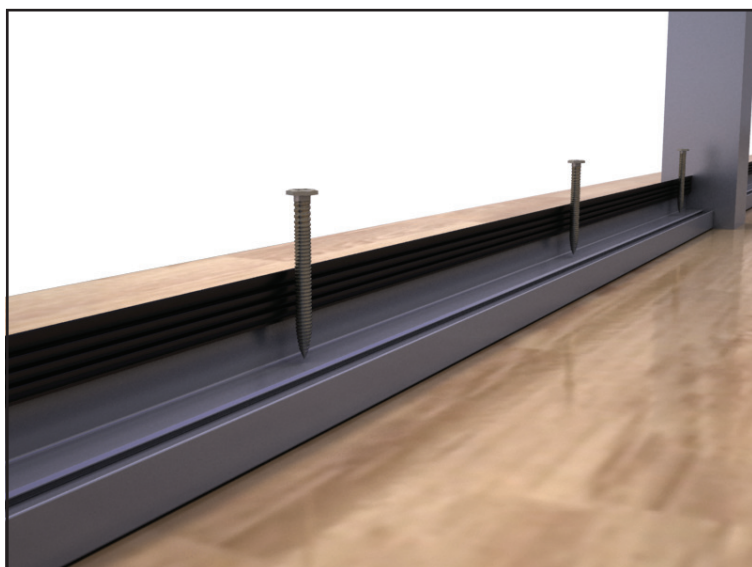
24 Place the bottom track into position



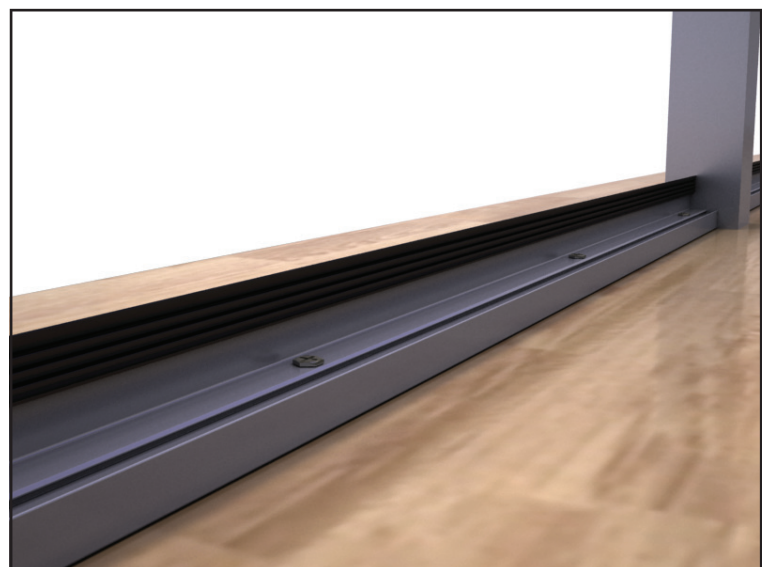
25 Use these dimensions to correctly line up handrail and bottom rail.



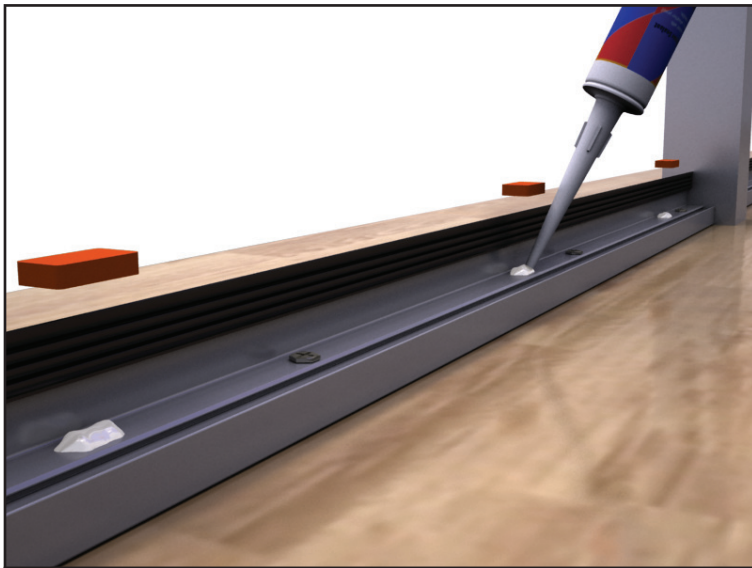
26 Bottom rail in position



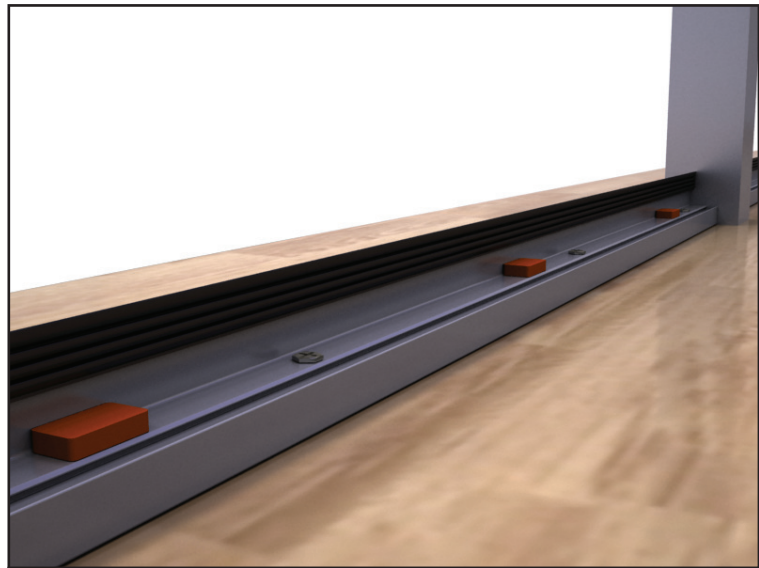
27 Drill into the floor/structure through the bottom rail to fix it



28 Secure the fixings to the bottom rail



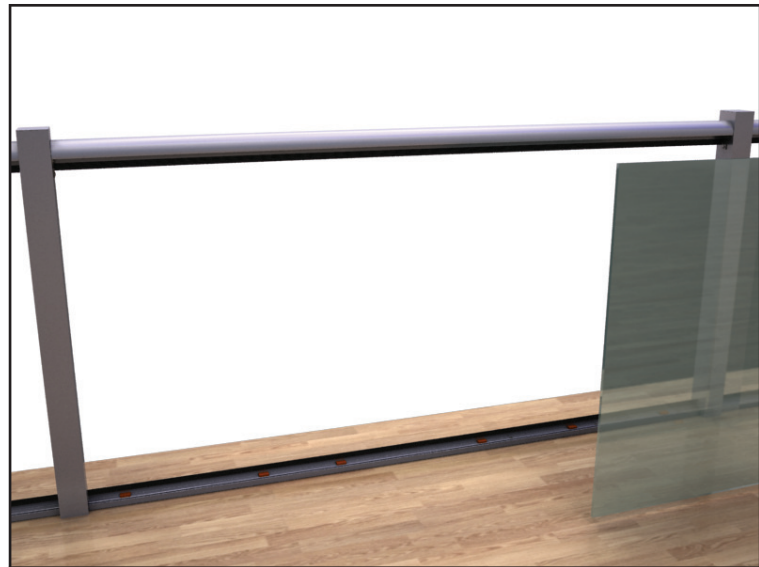
29 Place two 5mm (orange) spacers per required glass panel onto the bottom rail



30 Use silicone to stick them to the bottom rail



31 Place two 5mm (orange) spacers per required glass panel onto the bottom rail



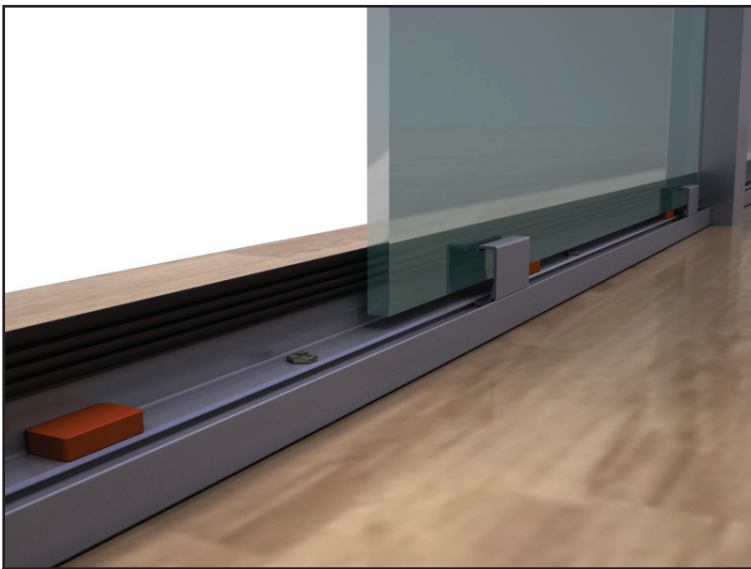
32 Identify glass sizes and where they are to go



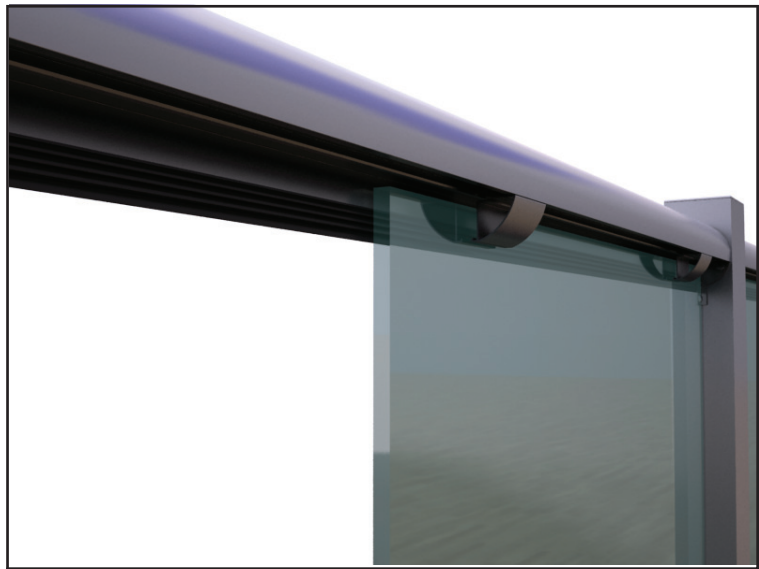
33 Place one glass panel at a time into position



34 Use the short pieces of glazing bead to temporarily hold the glass in position



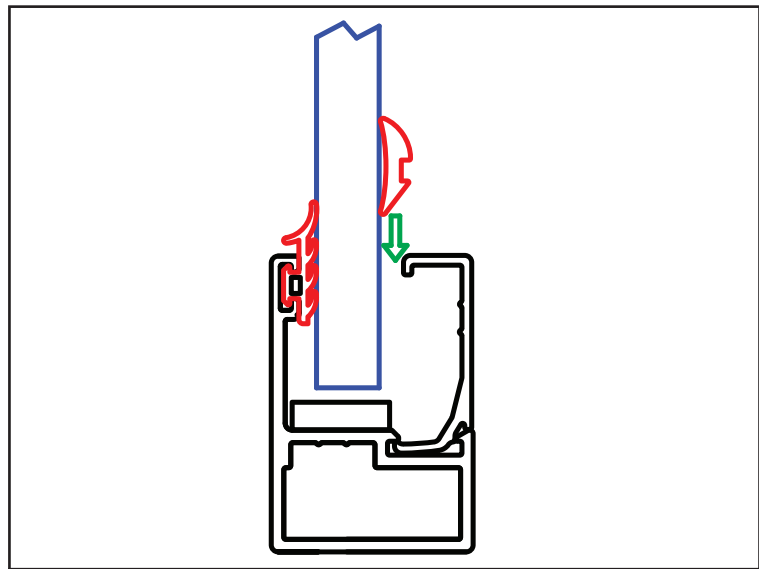
35 Bottom rail glazing beads in position



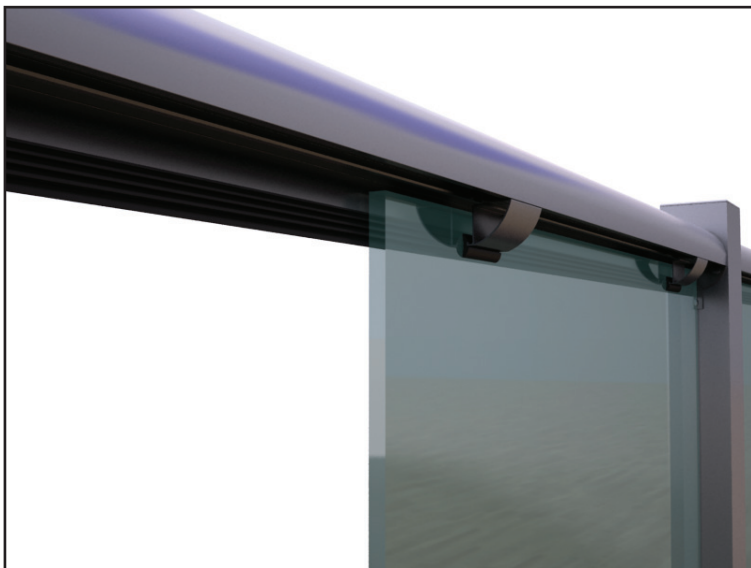
36 Handrail glazing beads in position



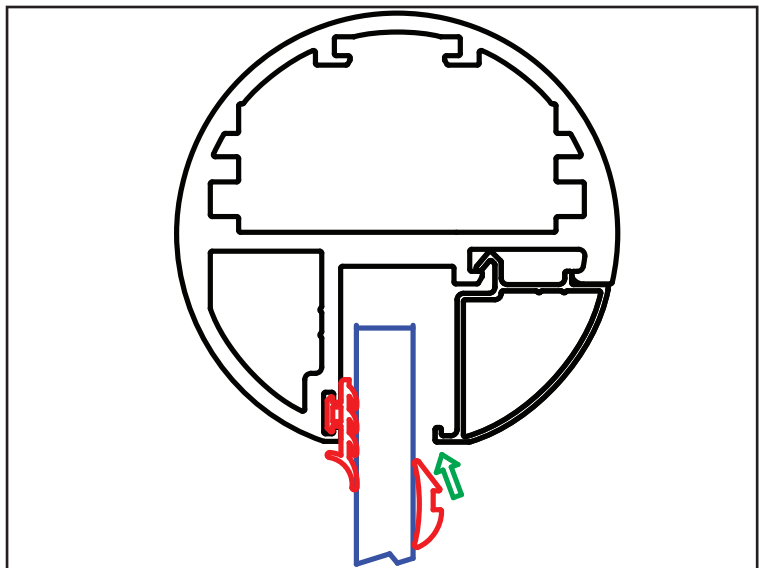
37 Use 3mm rubber gaskets to hold the glass against the small bead pieces on the bottom rail



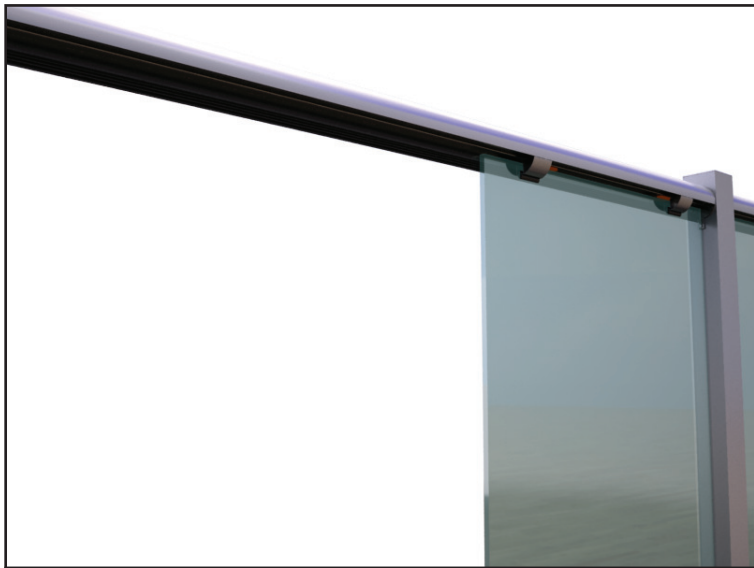
38 Using soapy water can make it easier to push rubber in



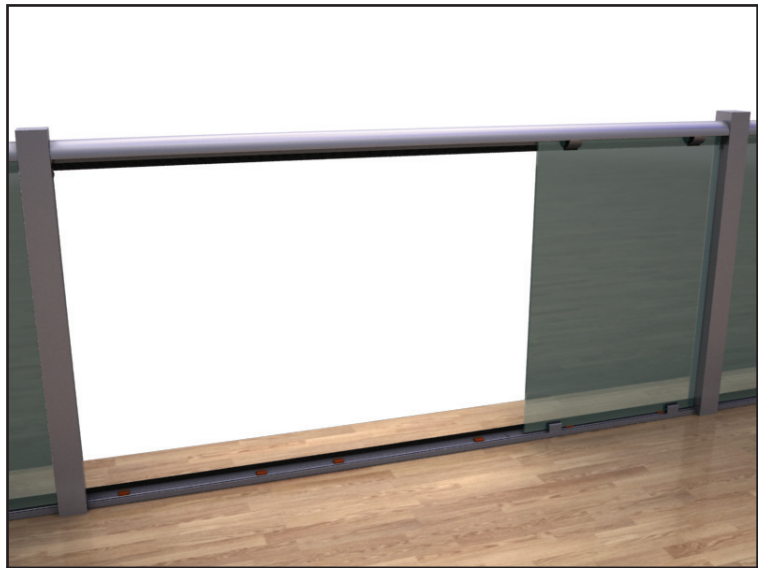
39 Use 3mm rubber gaskets to hold the glass against the small bead pieces on the handrail



40 Using soapy water can make it easier to push rubber in



41 Place the spacers on top of the glass so that the handrail doesn't sit on the glass



42 One at a time position each glass in its correct position



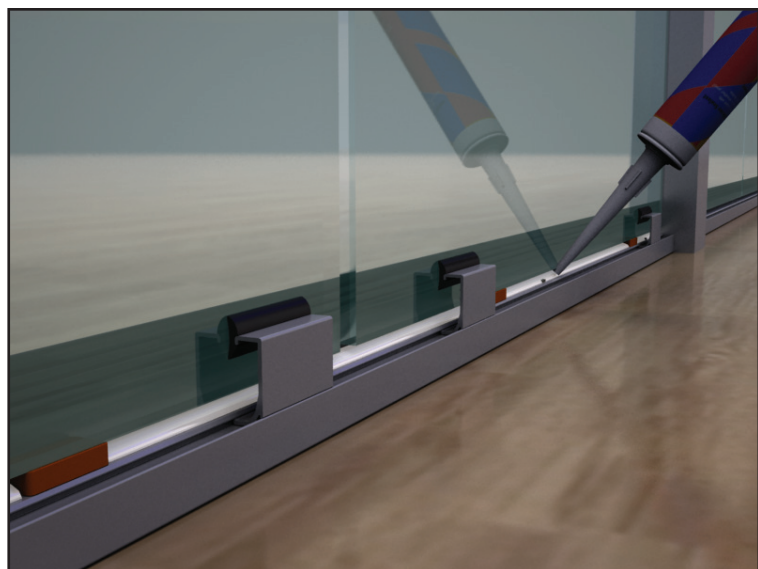
43 Repeat this process for each of the following glass panels



44 Align all the glass panels to have correct gaps. Use the glazing packers to lift one side or the other as needed



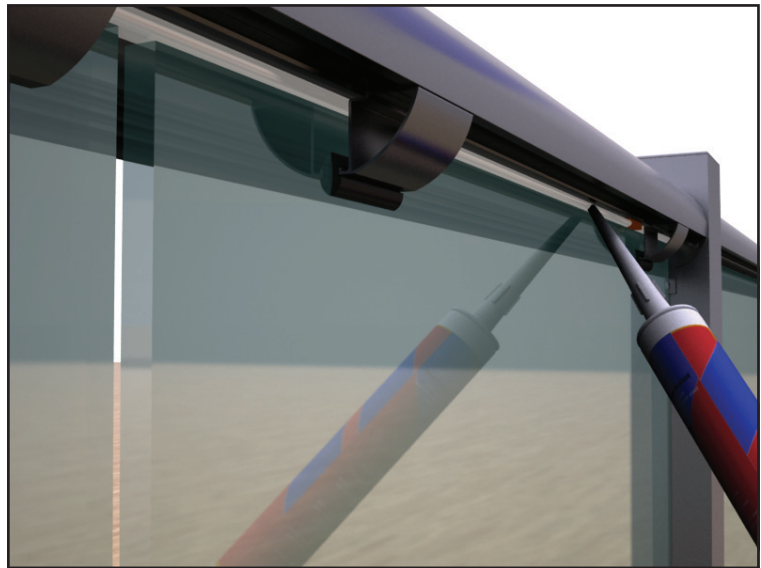
45 Apply a thick bead of high quality silicone sealant to continuously fill the gap between bottom of glass and bottom rail



46 Apply a thick bead of high quality silicone sealant to continuously fill the gap between bottom of glass and bottom rail



47 Apply a thick bead of high quality silicone sealant to continuously fill the gap between top of glass and handrail



48 Apply a thick bead of high quality silicone sealant to continuously fill the gap between top of glass and handrail



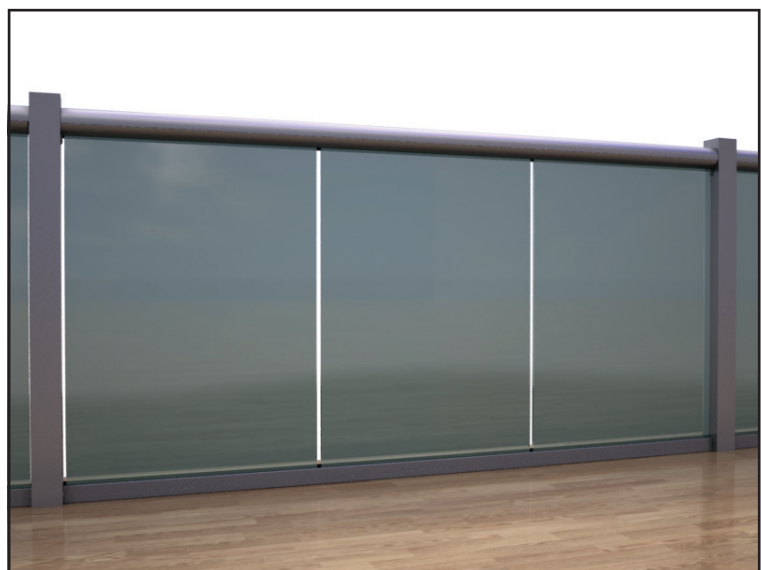
49 Wait until the silicone is completely dry



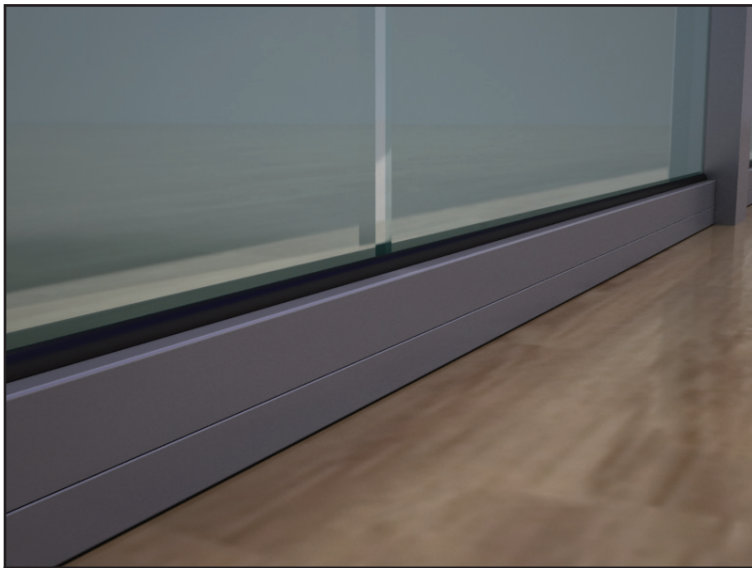
50 Remove the temporary glazing beads and rubber gaskets



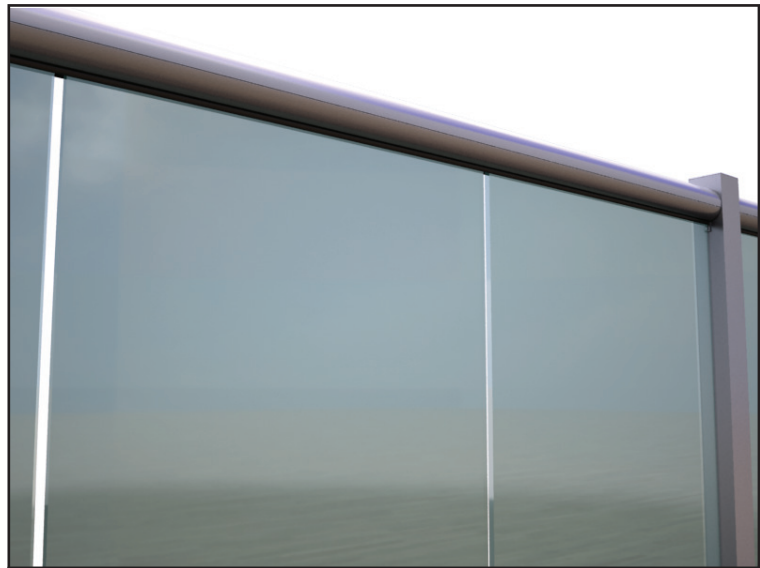
51 Replace the full length glazing bead on the bottom rail



52 Replace the full length glazing bead on the handrail



53 Using the 3mm glazing rubber provided glaze the bottom bead against the glass



54 Using the 3mm glazing rubber provided glaze the handrail bead against the glass



BALCONY

©Balcony Systems 2011

www.balconette.co.uk

Tel: +44 1342 410411

Fax: +44 1342 410412

Unit 6, Systems House, Eastbourne Road, Blindley Heath,
Lingfield, Surrey, RH7 6JP, United Kingdom

