



# BALCONY

## Balcony Balustrade System 1 Installation Instructions

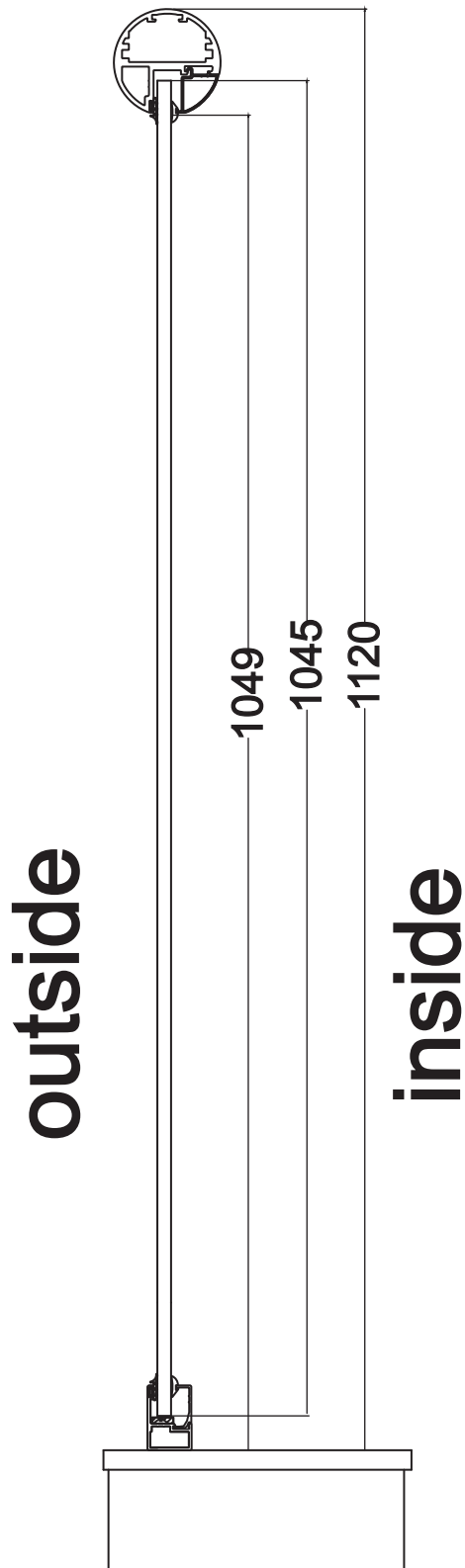
©Balcony Systems 2011

[www.balconette.co.uk](http://www.balconette.co.uk)

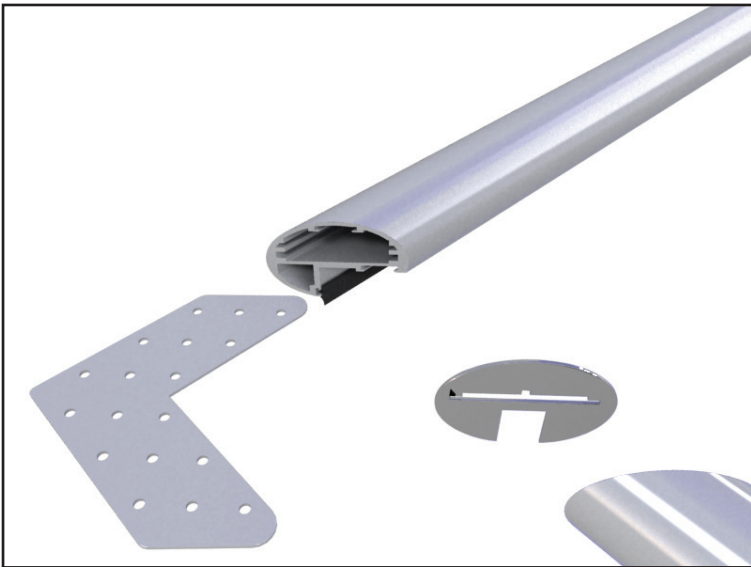
Tel: +44 1342 410411

Fax: +44 1342 410412

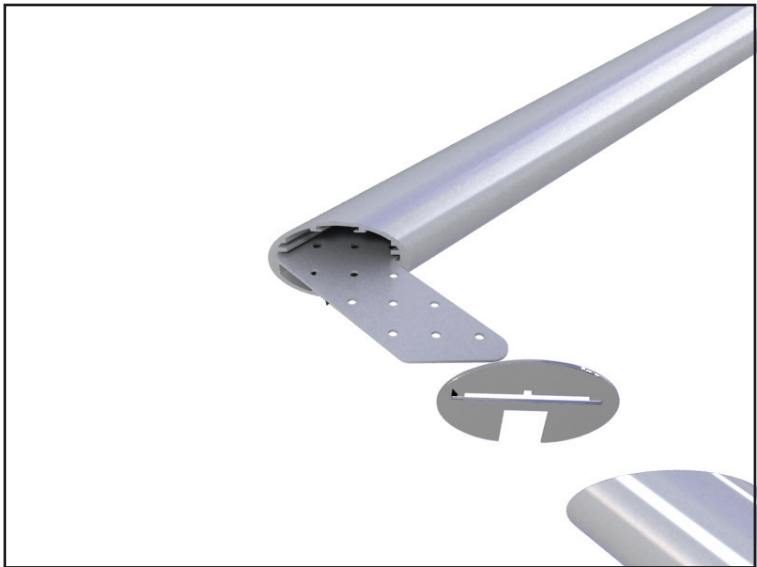
Unit 6, Systems House,  
Eastbourne Road,  
Blindley Heath, Lingfield,  
Surrey, RH7 6JP,  
United Kingdom



- 1) Check you have all the parts of the order.
- 2) Check the height of the glass
- 3) Check the height of the posts
- 4) Check both these heights against the required height on site making sure they are correct before assembling



5 Prepare to assemble the handrail corner



6 Slide corner joint plate into one of the handrails



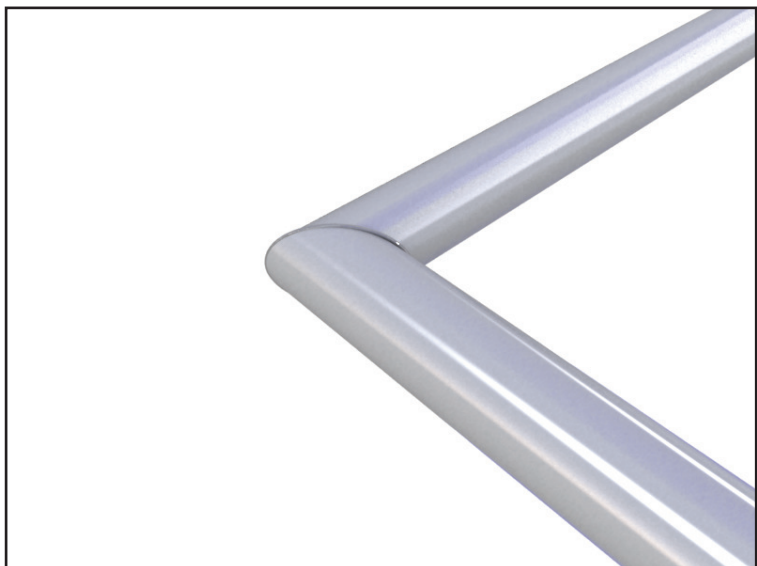
7 Tighten the screws



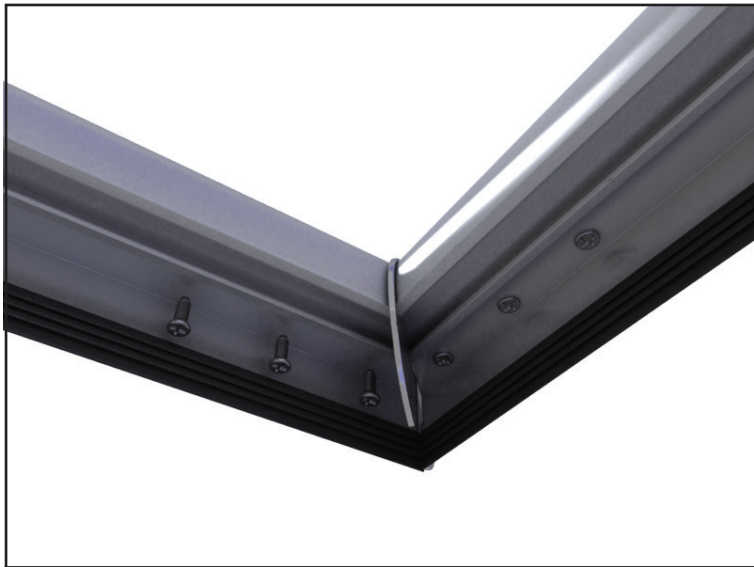
8 Tighten the screws



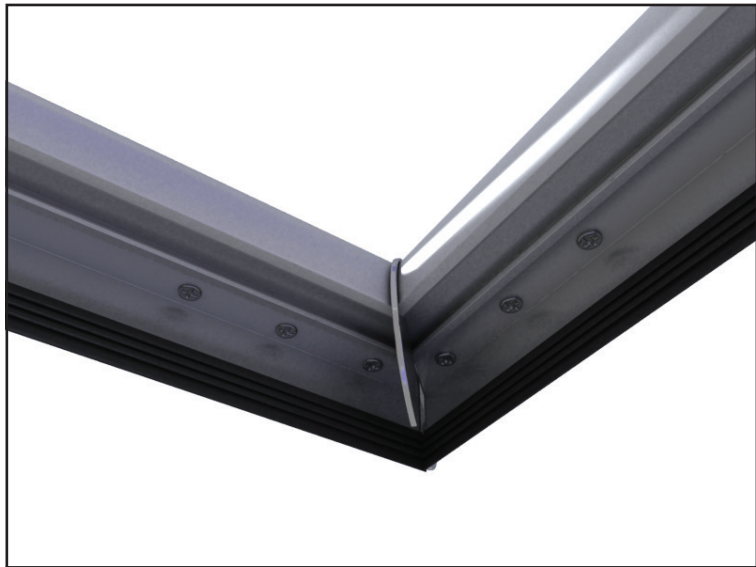
9 Slide mitre plate onto corner plate



10 Bring handrail to butt up to mitre plate



11 Tighten all screws



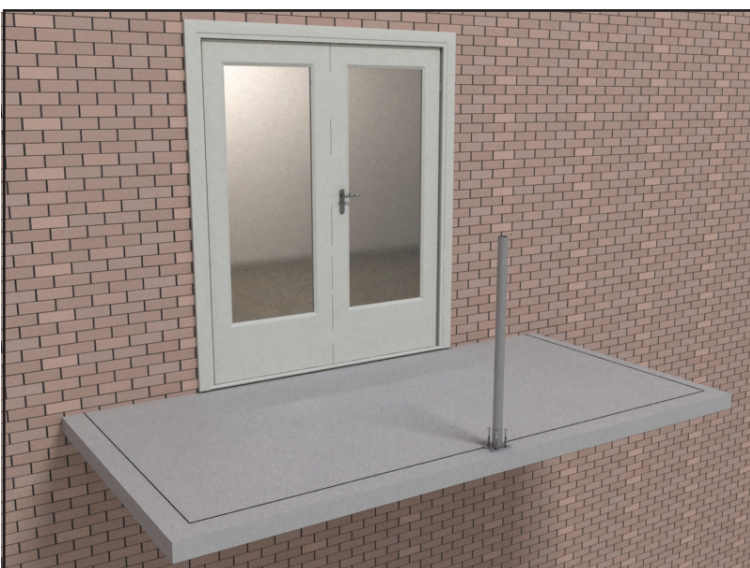
12 Tighten all screws. In this fashion join all handrail parts together.



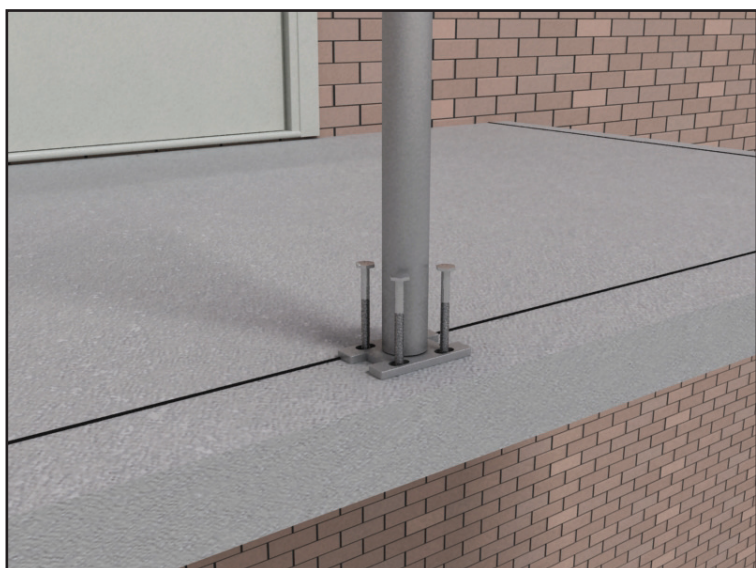
13 Place handrail on the floor in position to make sure the dimension and shape fit



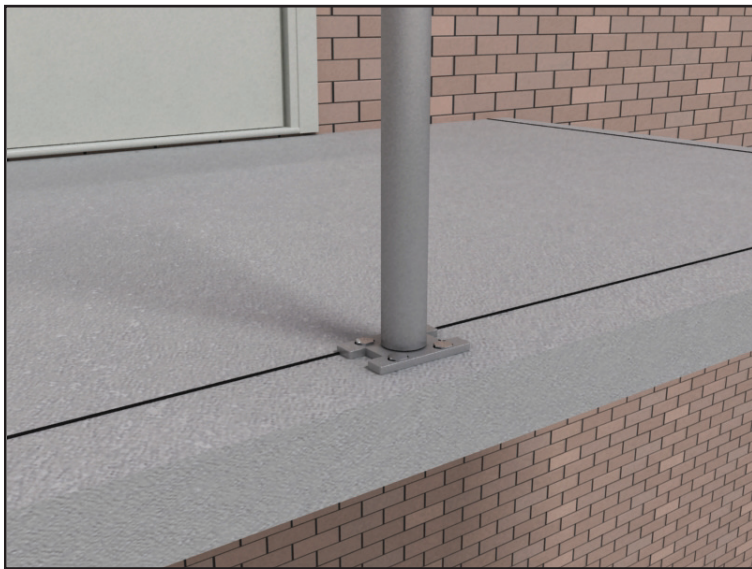
14 Mark lines for later positioning of bottom track



15 Position the primary steel post in the correct position



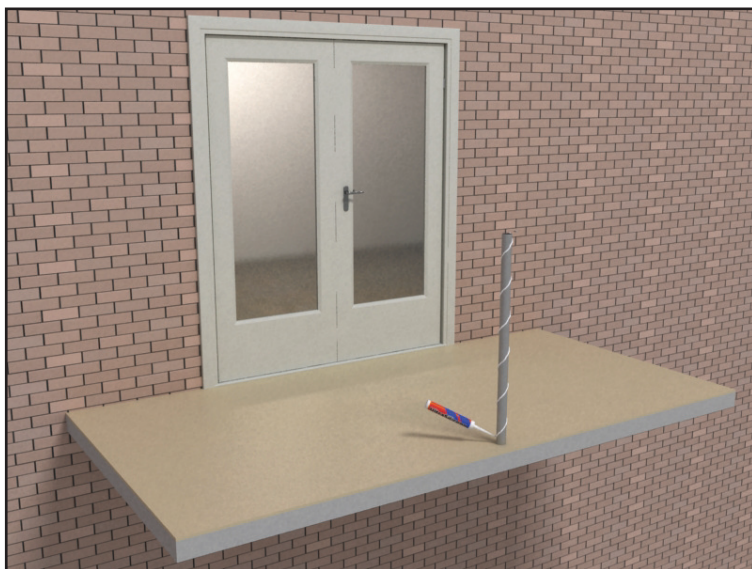
16 Fix the post firmly to the structure



Use the appropriate fixings (Post fixing 17 can be done at primary stage by locating the posts using measurements)



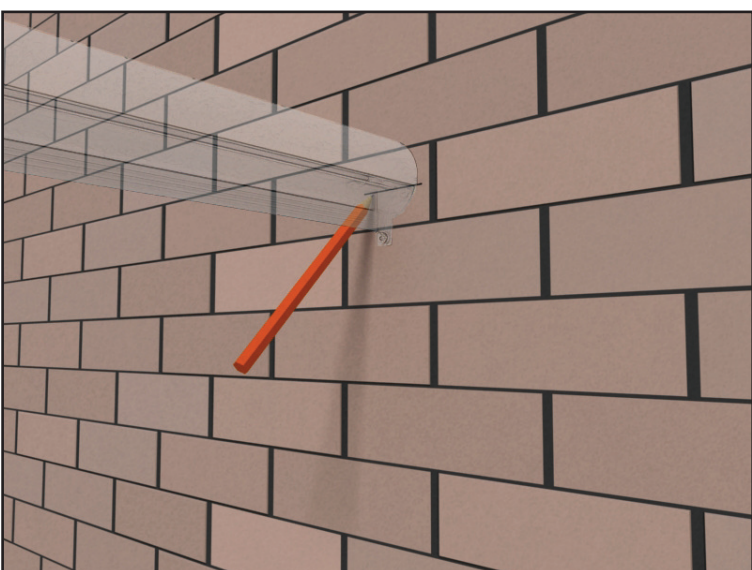
18 Finish the flooring, decking, screed, floor finish etc. to the required height. This should conceal the base plate and bolts



19 Apply a thick bead of silicone sealant around the primary steel post in a spiral fashion



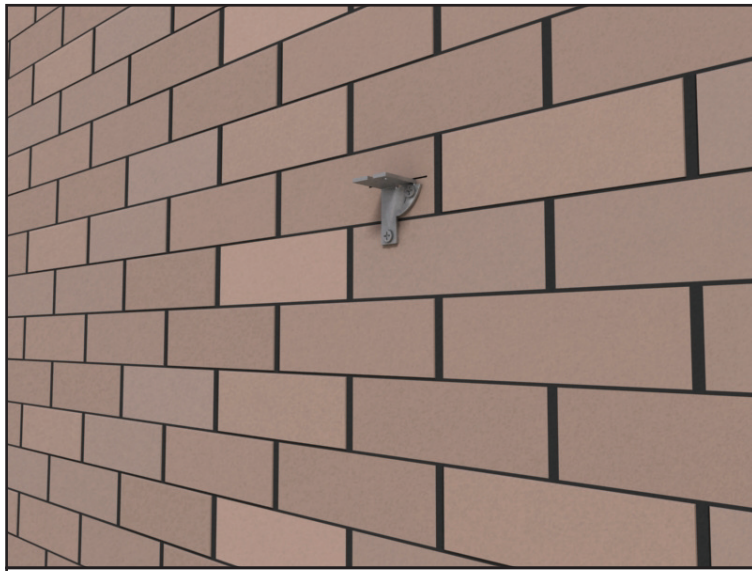
20 Slide the system cover post onto the primary post



21 Using a level mark the position required to fix the wall fixing bracket.



22 Use the appropriate fixings.



24 Secure the wall bracket to the wall.



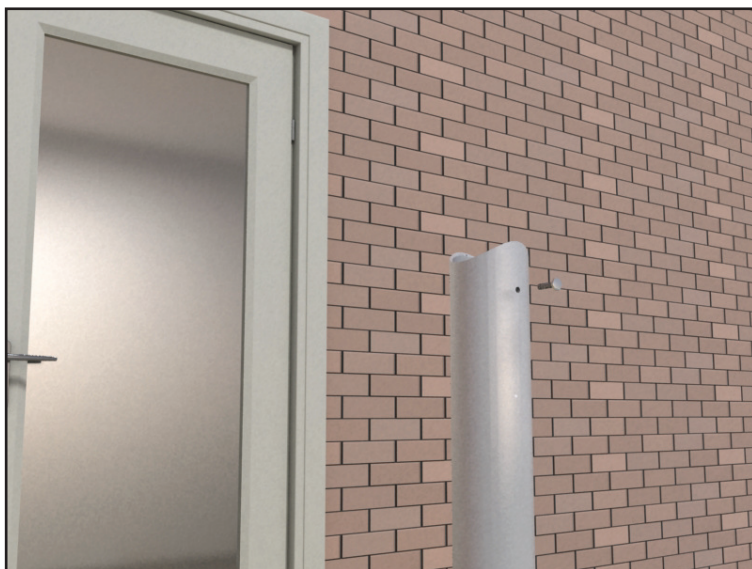
25 Bring the handrail into position



26 Drop the handrail onto the angle bracket



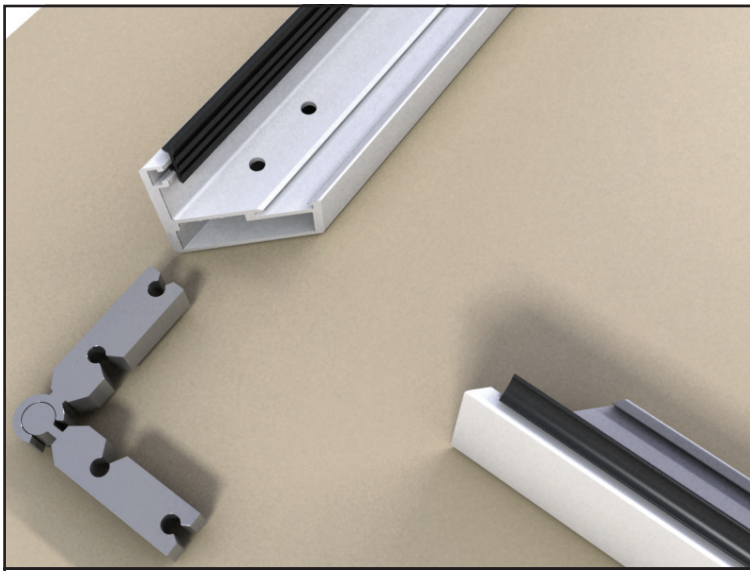
27 Drill 4mm holes through brackets in the handrail. Fix the handrail to the wall bracket using the No. 10 x 3/4" S/tapping screws



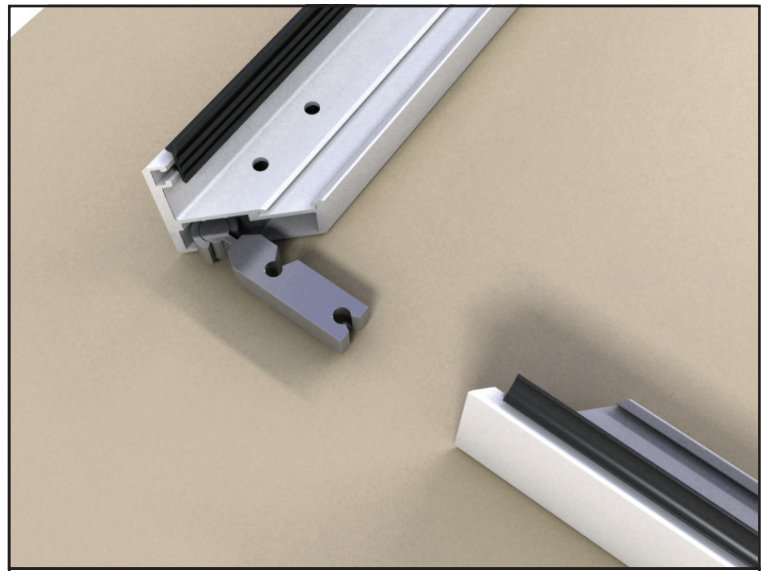
28 Handrail connector fits into top of post



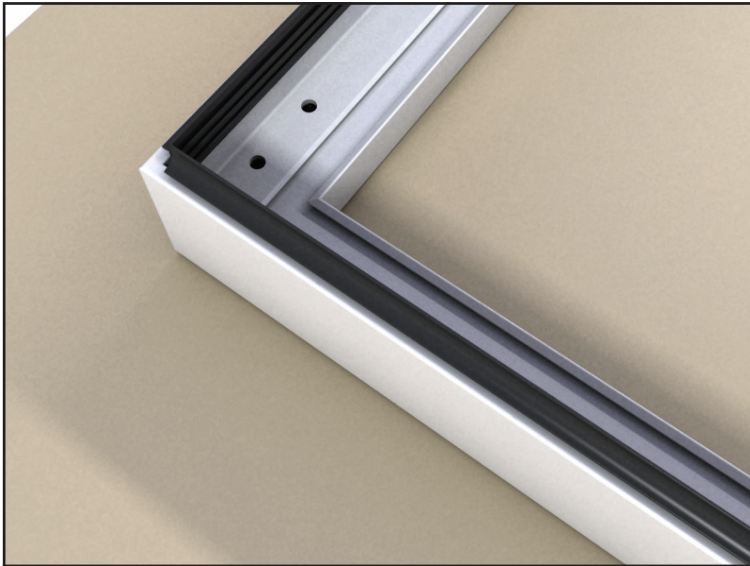
29 Fix the post into the post connector using the M5 screw provided



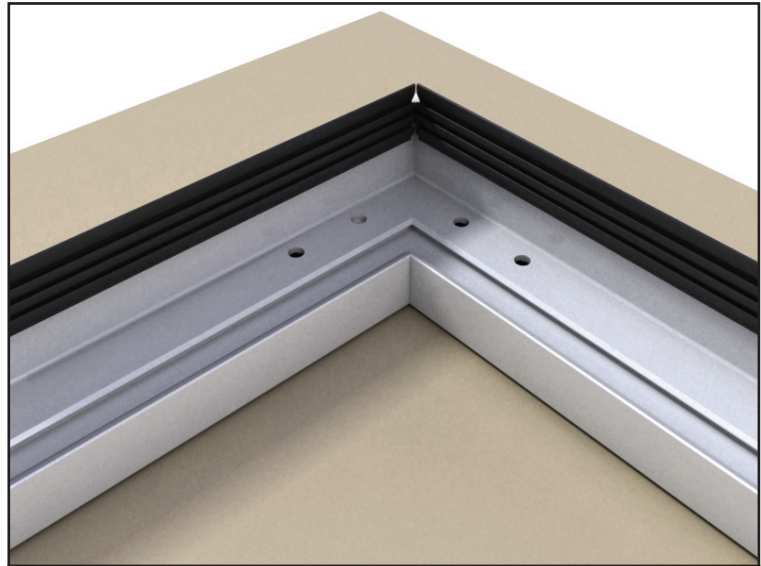
30 Prepare to assemble the bottom track



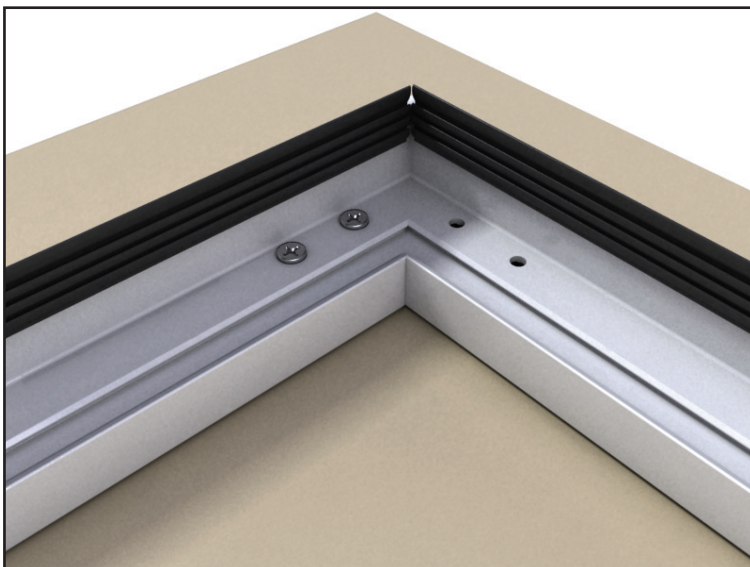
31 Slide the corner joint in one of the bottom rails. (the bottom rail corner joint is suitable on angles of 75' to 139')



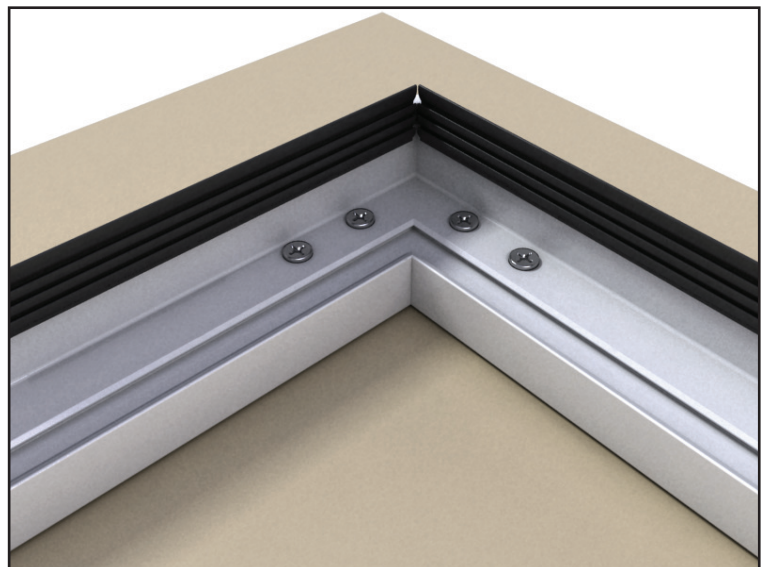
32 Insert into the other bottom rail corner



33 and tighten the screws

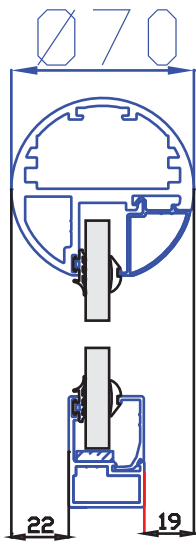


34



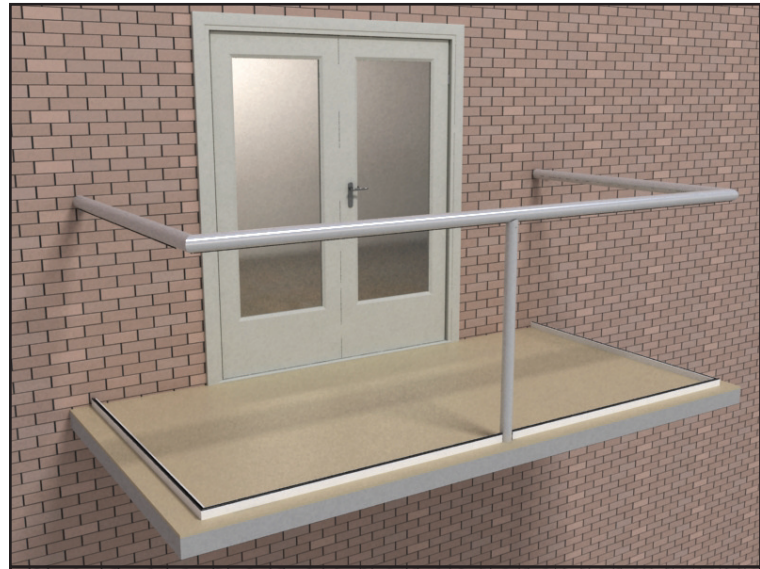
35

outside

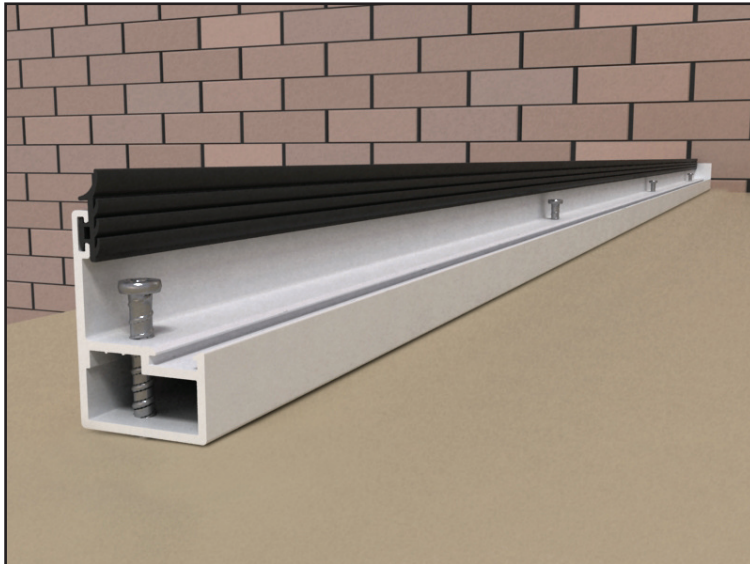


inside

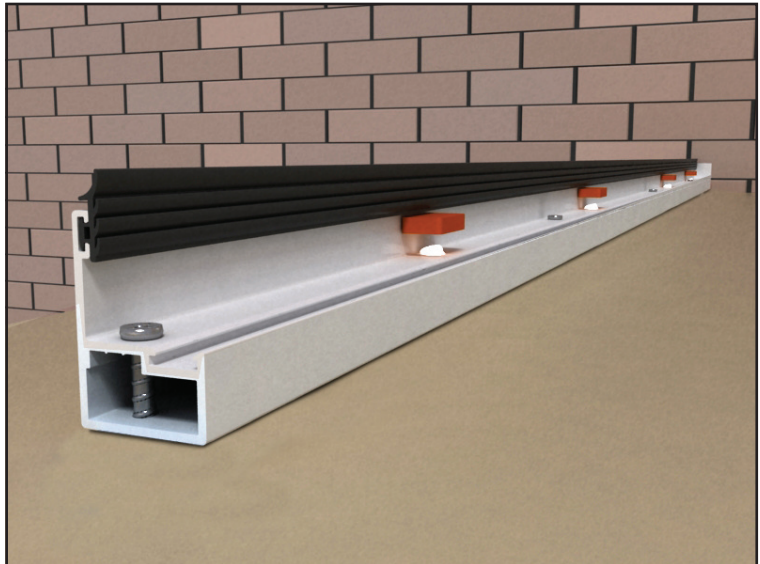
36 Use these dimensions to correctly line up handrail and bottom rail.



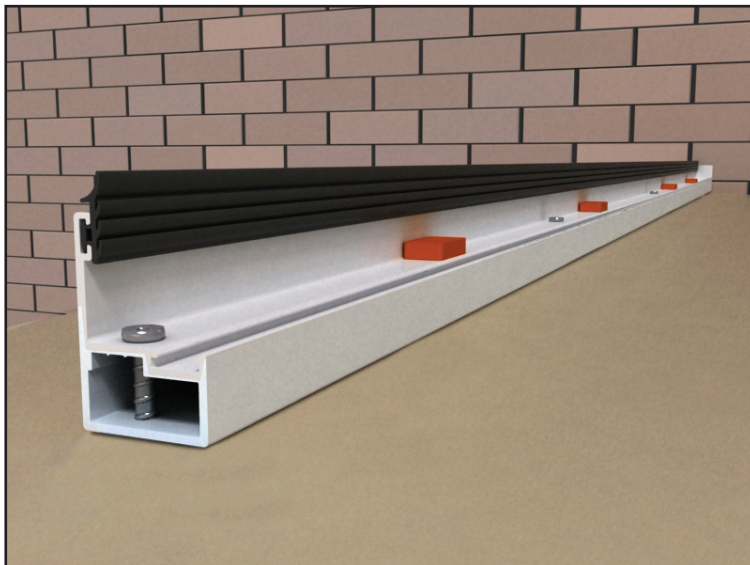
37 Place the bottom track into position.



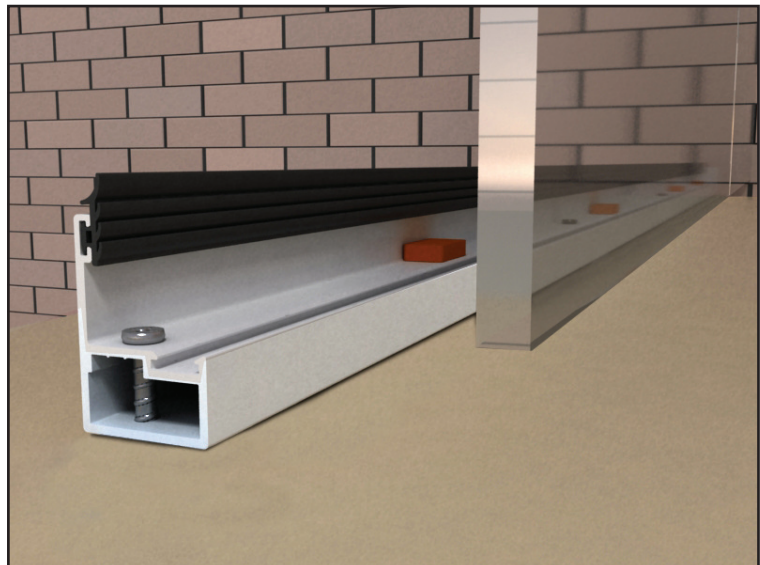
38 Drill into the floor/structure through the bottom rail to fix it.



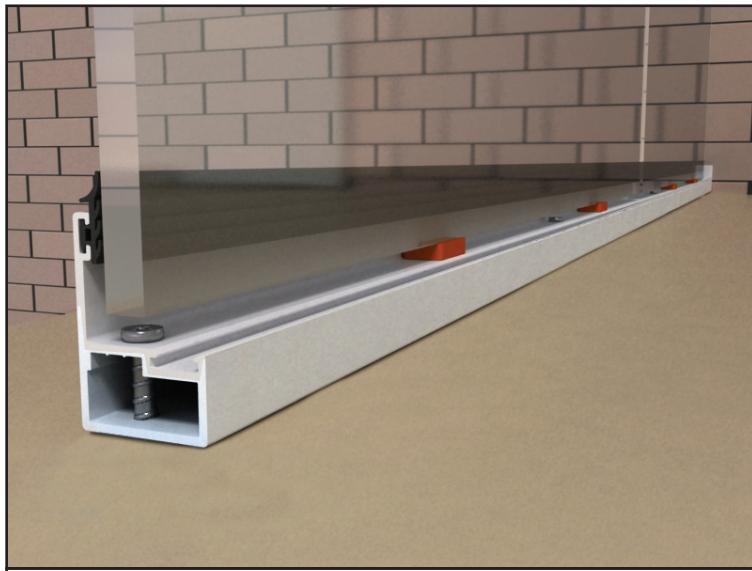
39 Place two 5mm (orange) spacers per required glass panel onto the bottom rail



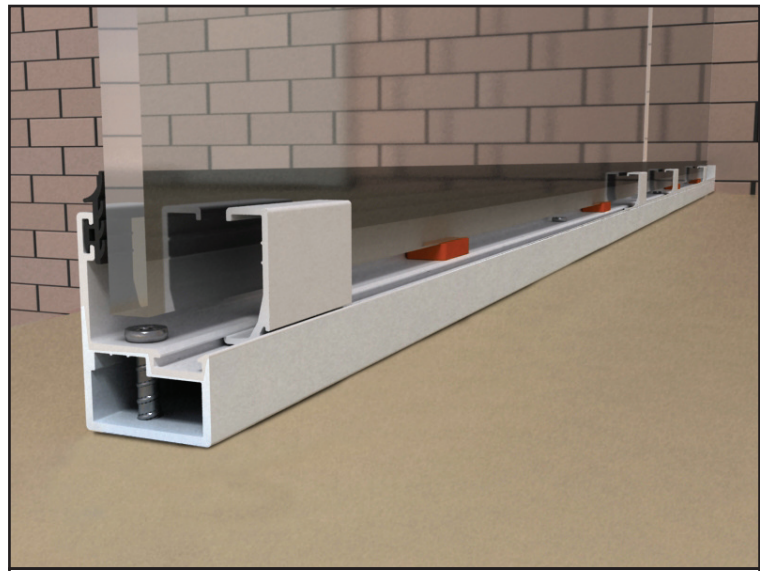
40 Use silicone to stick them to the bottom rail



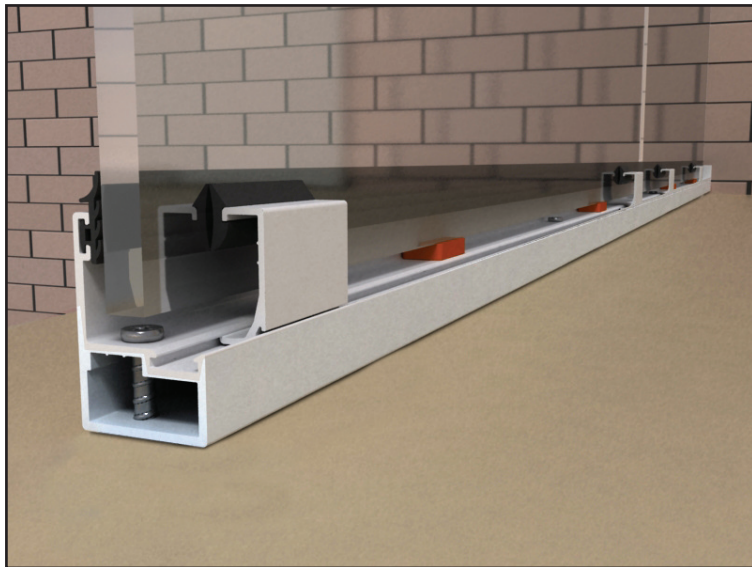
41 Identify glass sizes and where they are to go



42 Place one glass panel at a time into position



43 Use the short pieces of glazing bead to temporarily hold the glass in position



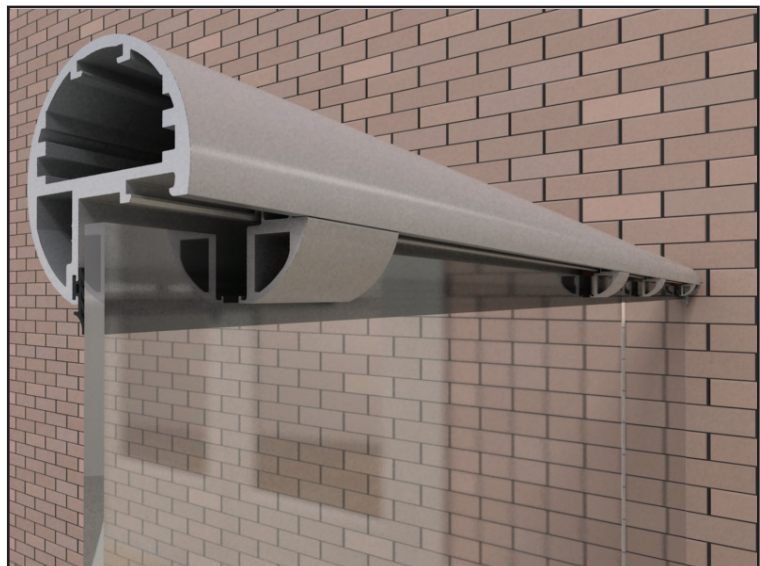
44 Use 3mm rubber gaskets to hold the glass against the small bead pieces



45 Place one glass panel at a time into position



46 Place the spacers so the handrail doesn't sit on the glass

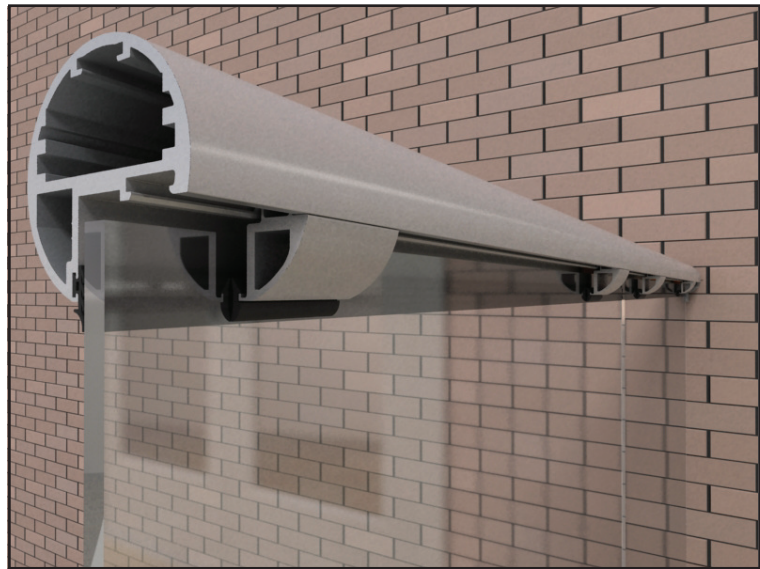


47 Use the short pieces of glazing bead to temporarily hold the glass in position

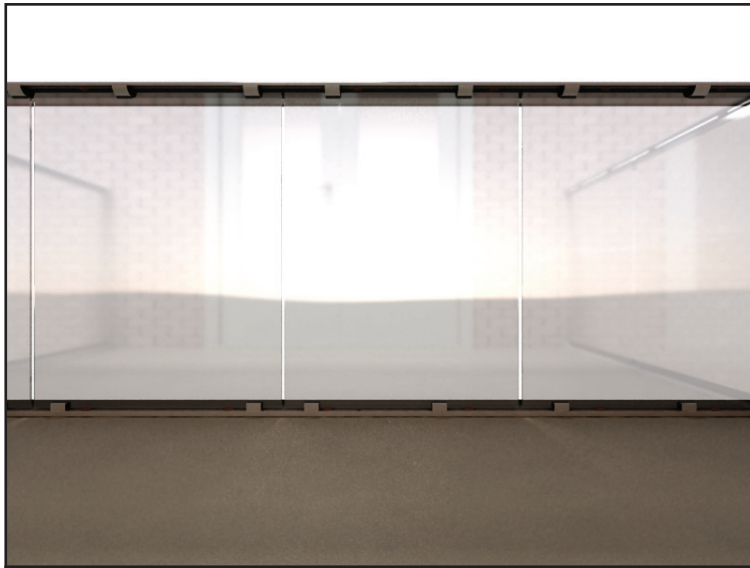




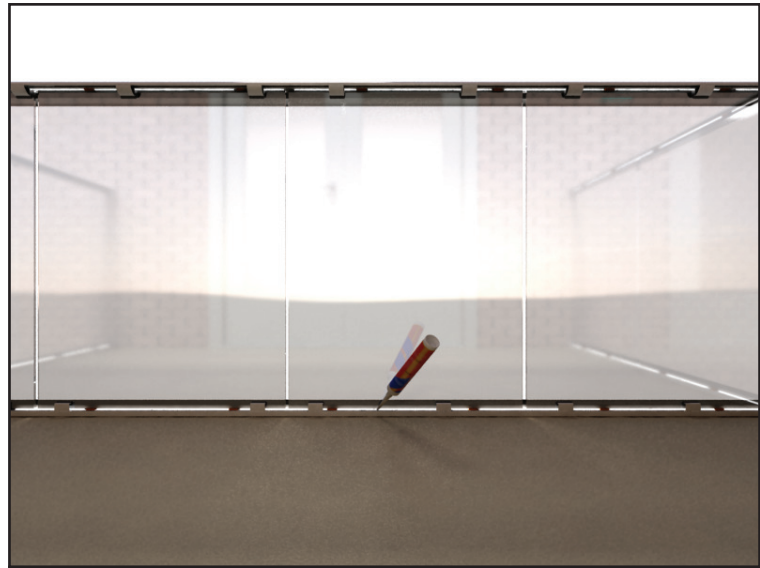
48 Use 3mm rubber gaskets to hold the glass against the small bead pieces



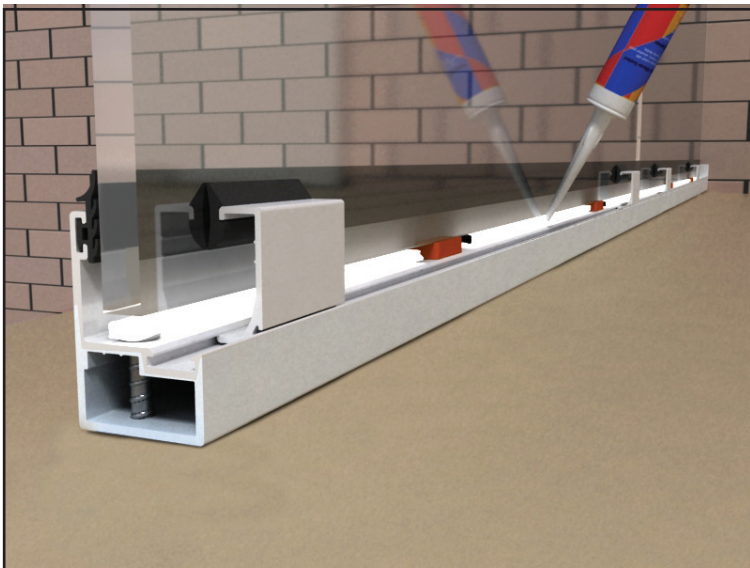
49 Use 3mm rubber gaskets to hold the glass against the small bead pieces



50 Align all the glass panels to have correct gaps. Use the glazing packers to lift one side or the other if needed



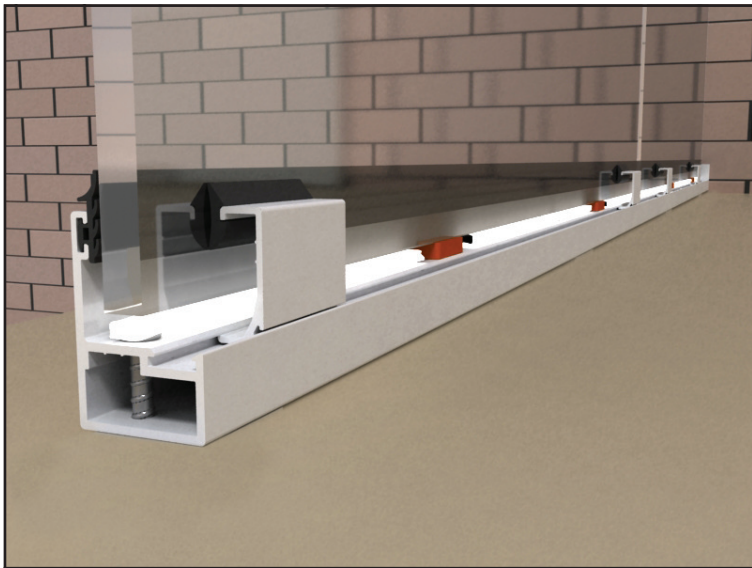
51 When everything lines up and all correct silicone it all.



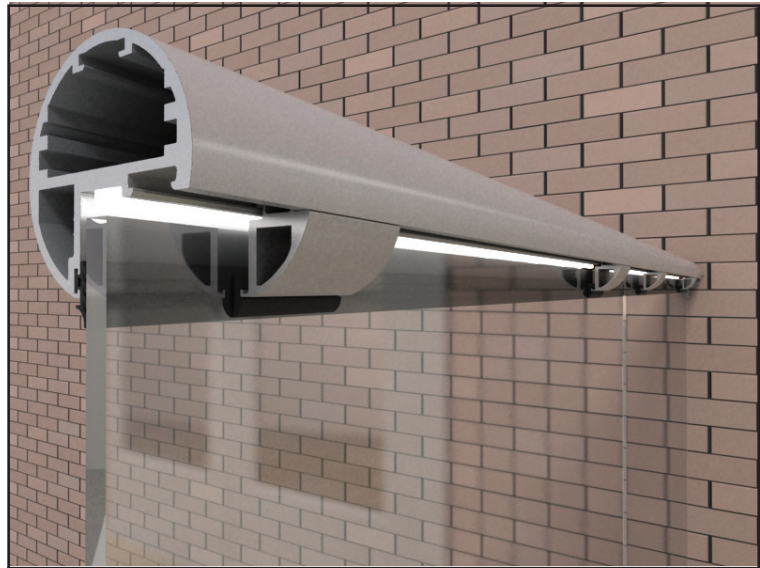
52 Apply a thick bead of high quality silicone sealant to continuously fill the gap between bottom of glass and bottom rail



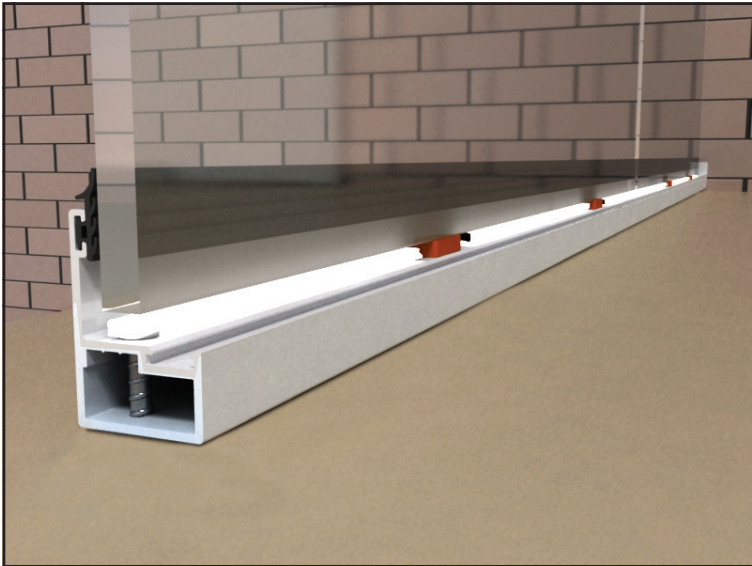
53 Apply a thick bead of high quality silicone sealant to continuously fill the gap between top of glass and handrail



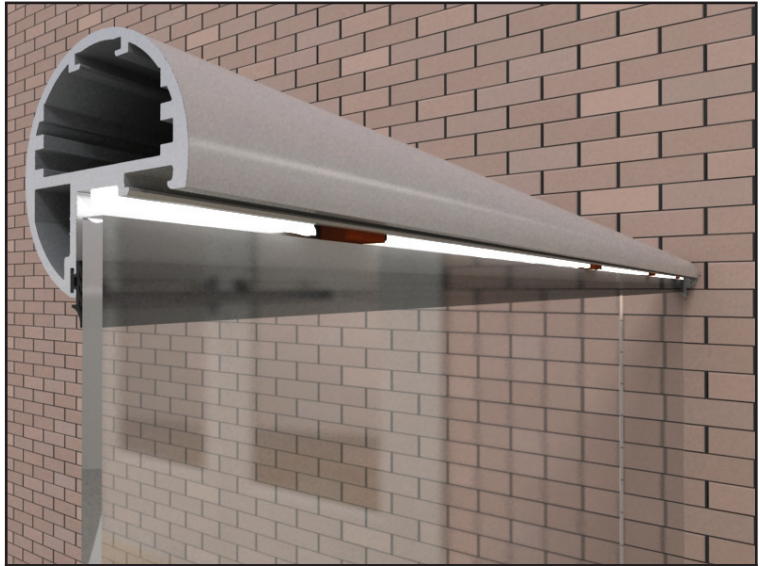
54 Wait until the silicone is completely dry



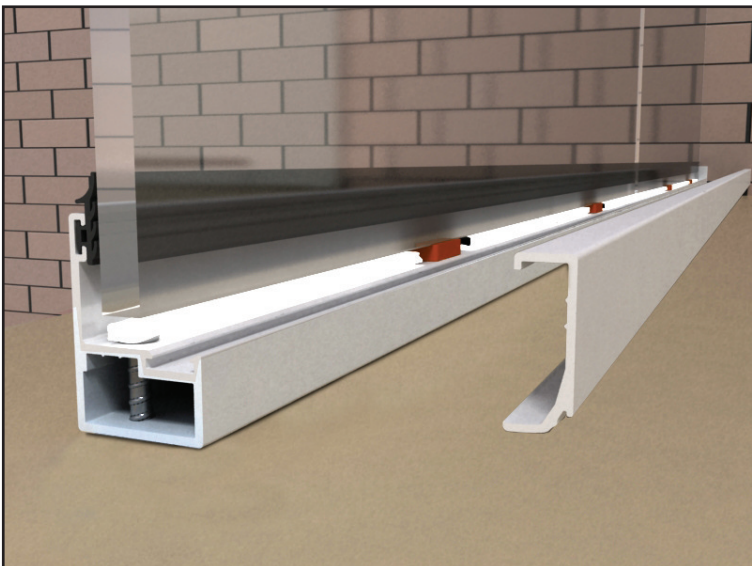
55 Wait until the silicone is completely dry



56 Remove the temporary glazing beads and rubber gaskets



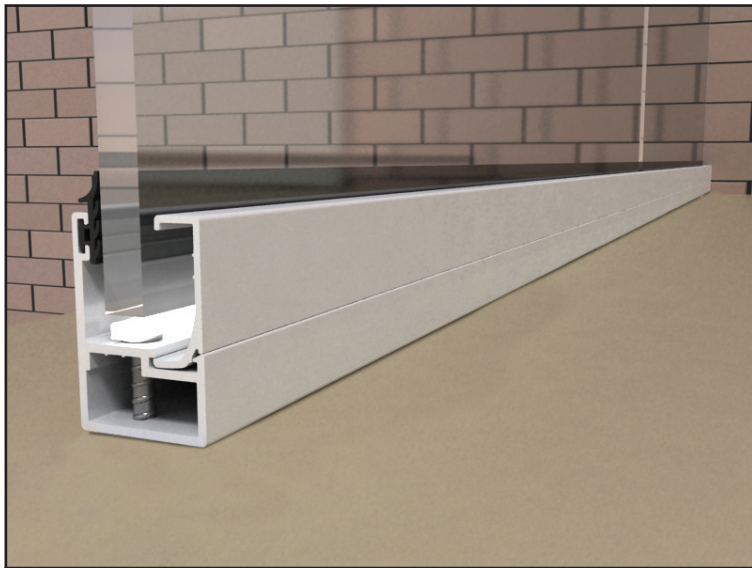
57 Remove the temporary glazing beads and rubber gaskets



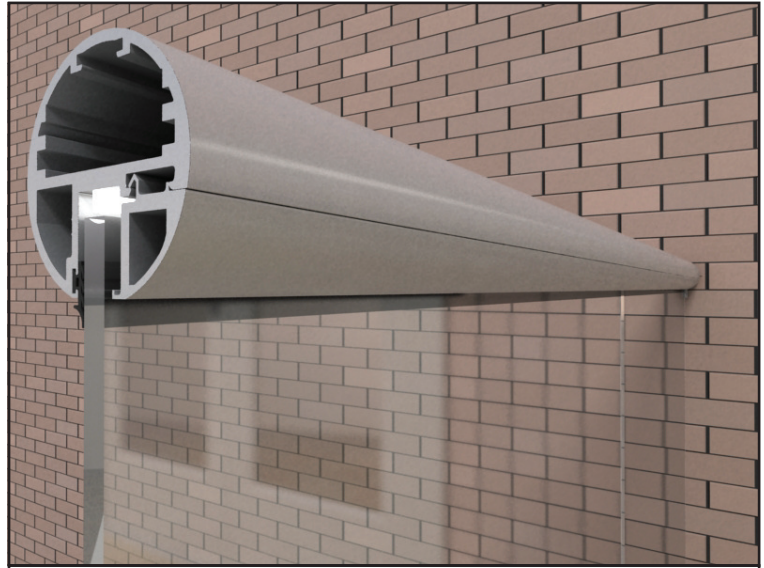
58 Replace the full length glazing beads



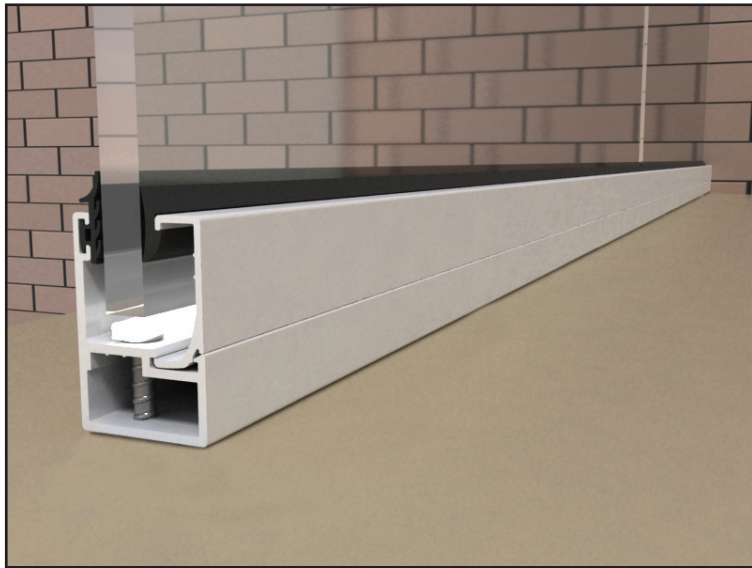
59 Replace the full length glazing beads



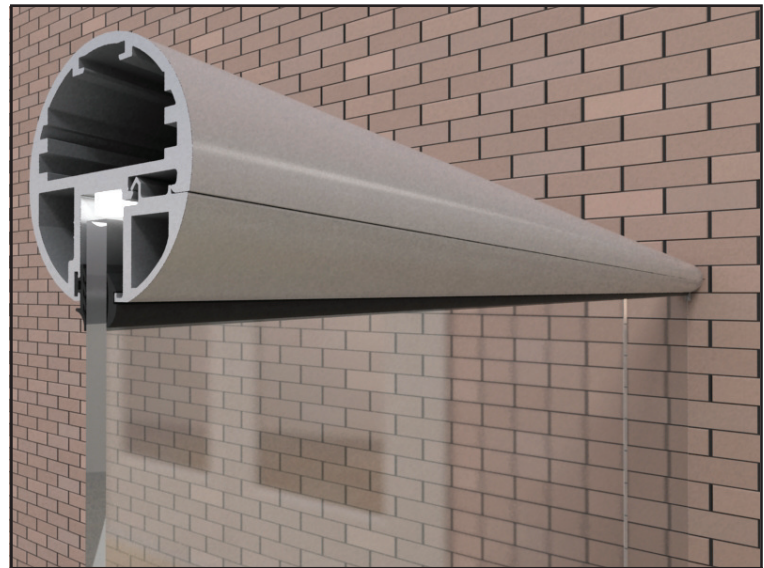
60 Replace the full length glazing beads



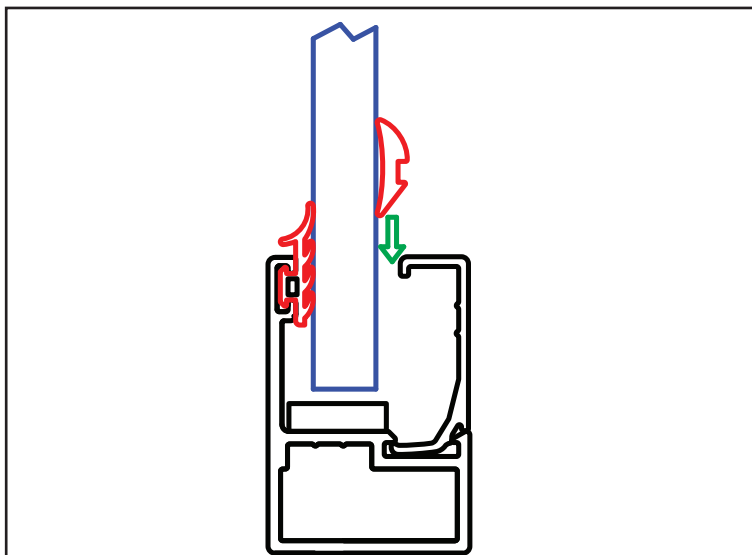
61 Replace the full length glazing beads



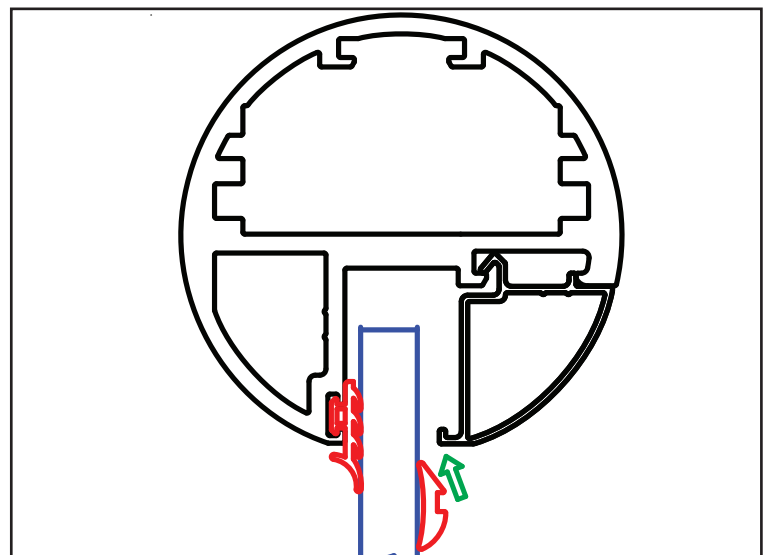
62 Strengthen the grip with rubber gaskets



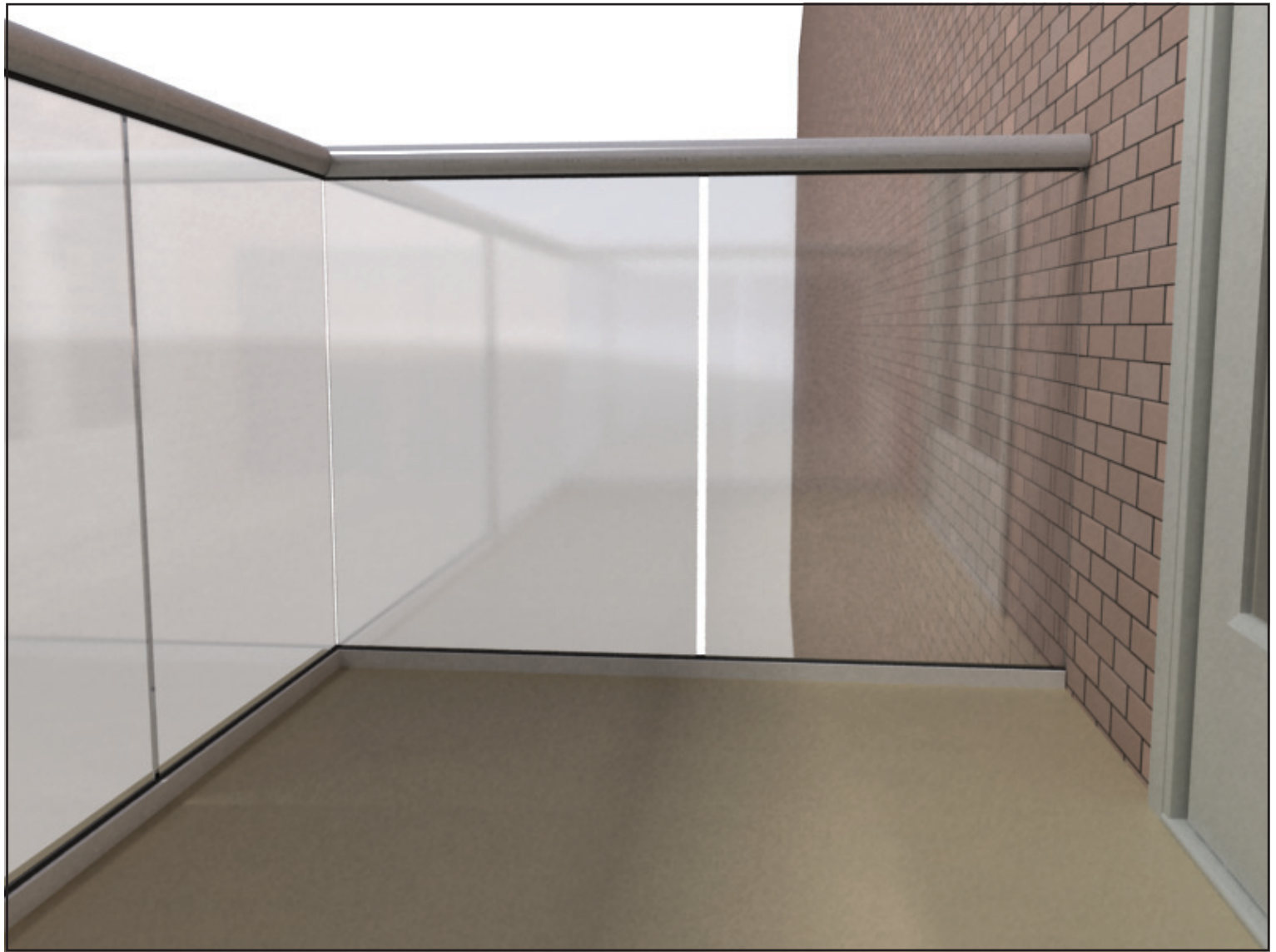
63 Strengthen the grip with rubber gaskets



64 Using soapy water can make it easier to push rubber in



65 Using soapy water can make it easier to push rubber in



# BALCONY

©Balcony Systems 2011  
[www.balconette.co.uk](http://www.balconette.co.uk)

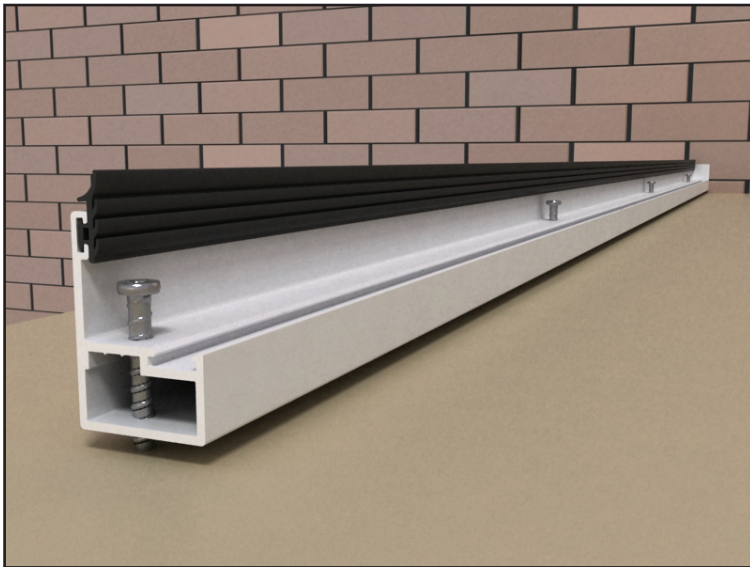
Tel: +44 1342 410411

Fax: +44 1342 410412

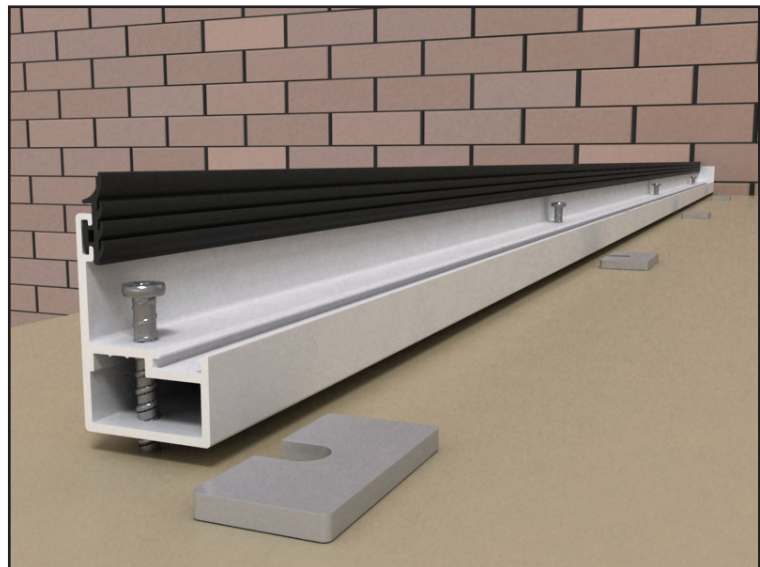
Unit 6, Systems House, Eastbourne Road,  
Blindley Heath, Lingfield, Surrey, RH7 6JP,  
United Kingdom

## Additional options

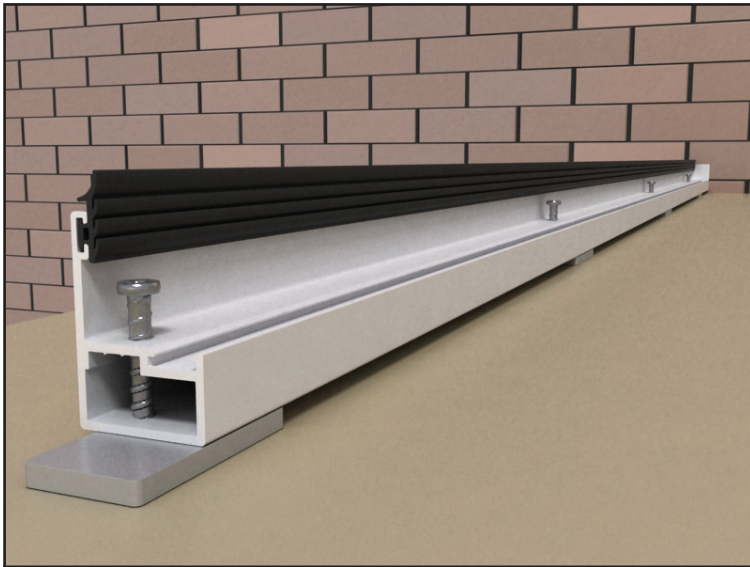
5mm packers under bottom rail



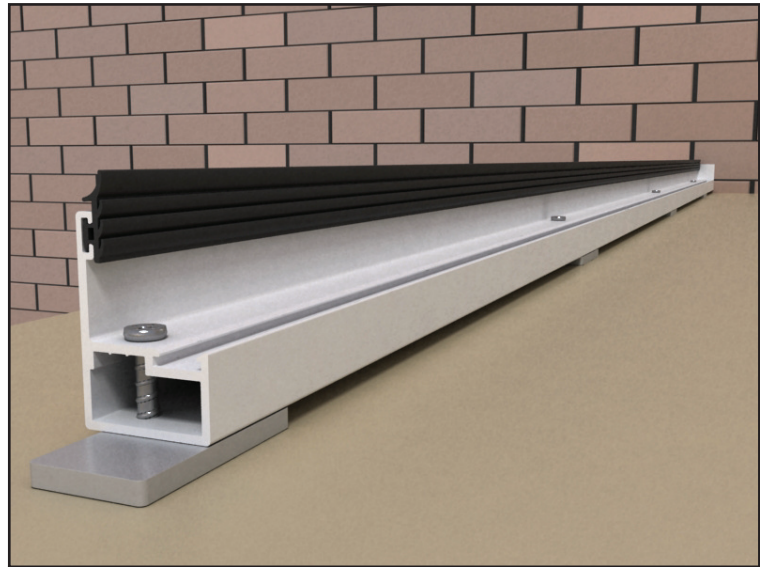
66\* Drill into the floor/structure through the bottom rail to fix it.



67\* If required, place 5mm aluminium spacers under the bottom rail



68\* Place the spacers so the groove lines up with the screws

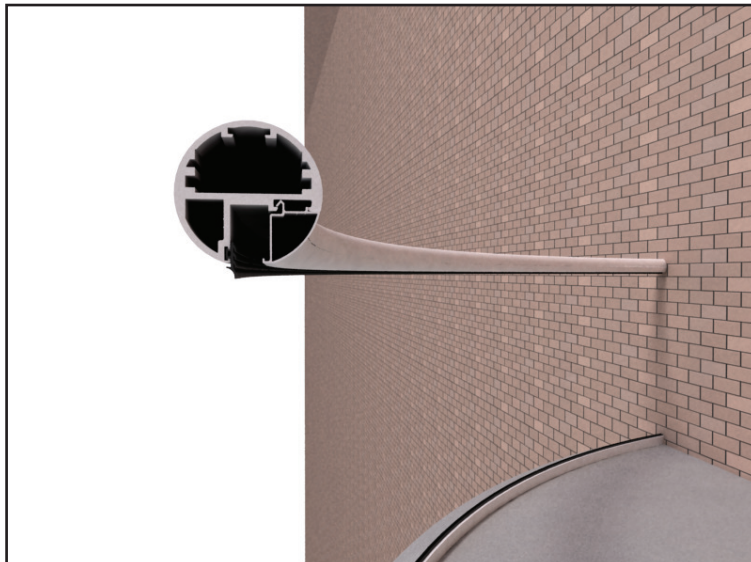


69\* Tighten bottom rail to the floor

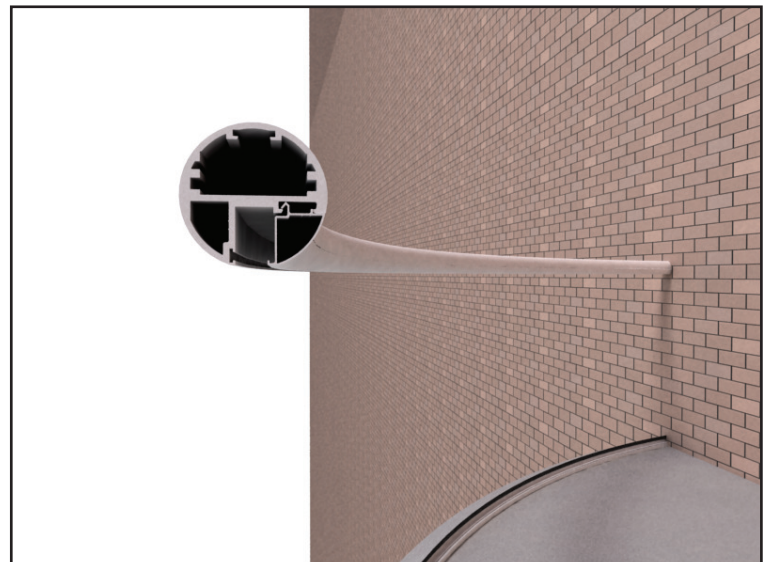
## Additional options

### Curved handrails/balustrades

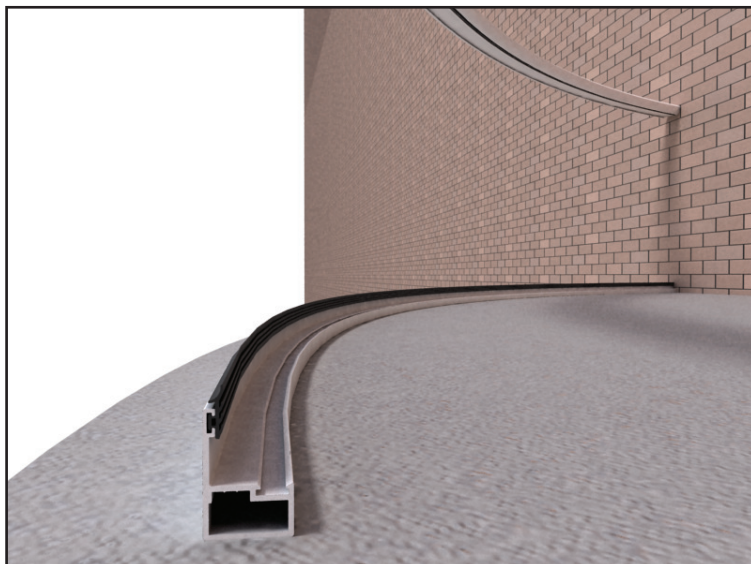
On occasion it is difficult or not possible to remove the glazing bead, in these cases follow this procedure



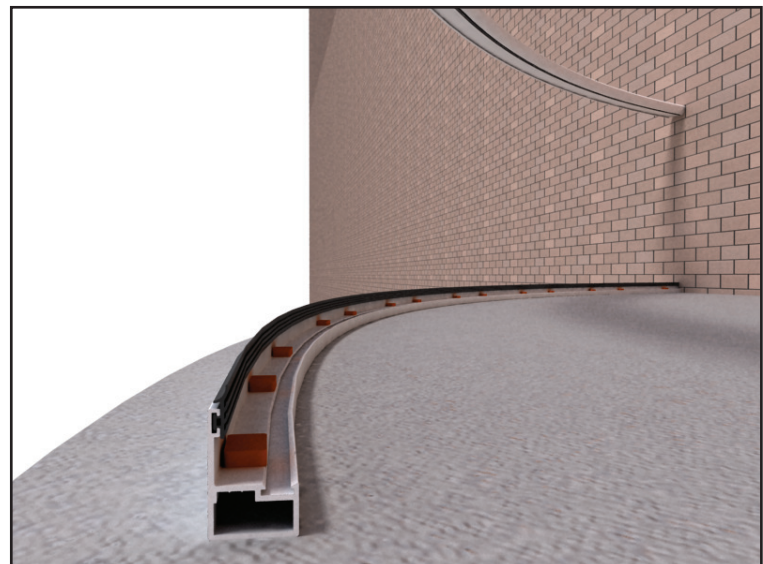
70\* Leave the handrail glazing bead in position



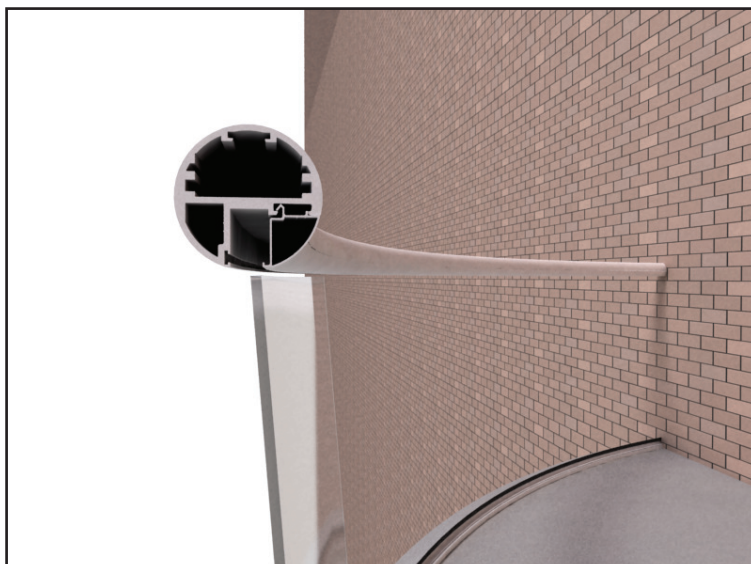
71\* Remove the rear fixed rubber from the handrail



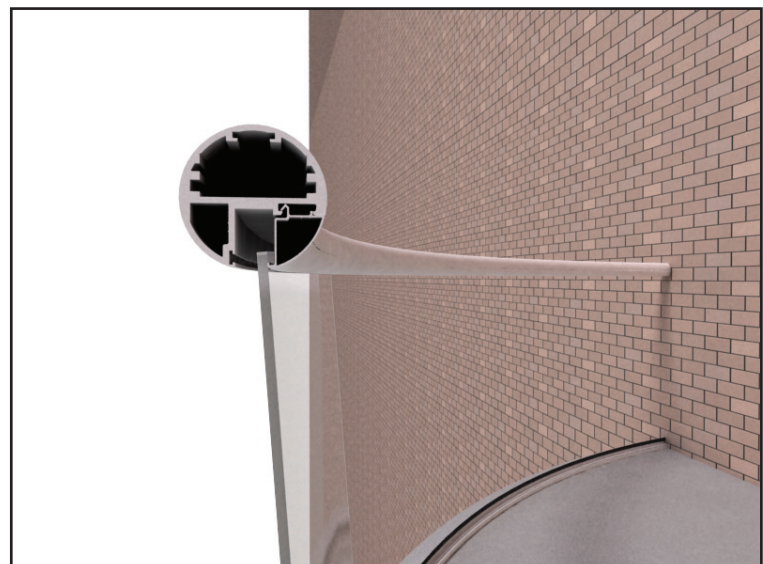
72\* Remove the glazing bead from the bottom rail



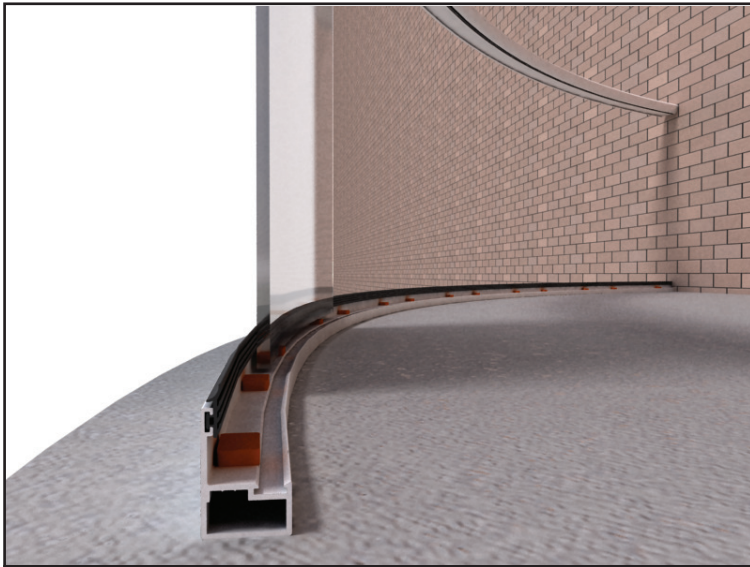
73\* Place two orange 5mm packers per glass on the bottom rail



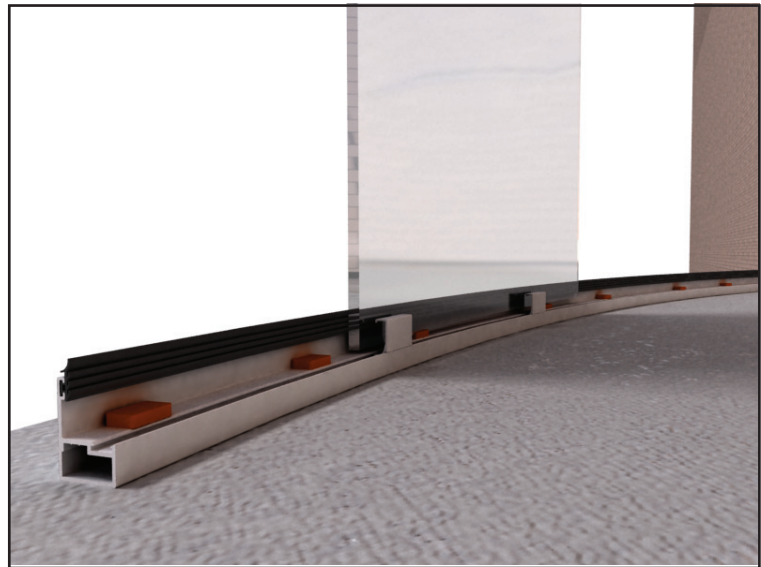
74\* Identify the glass panels and where they should go



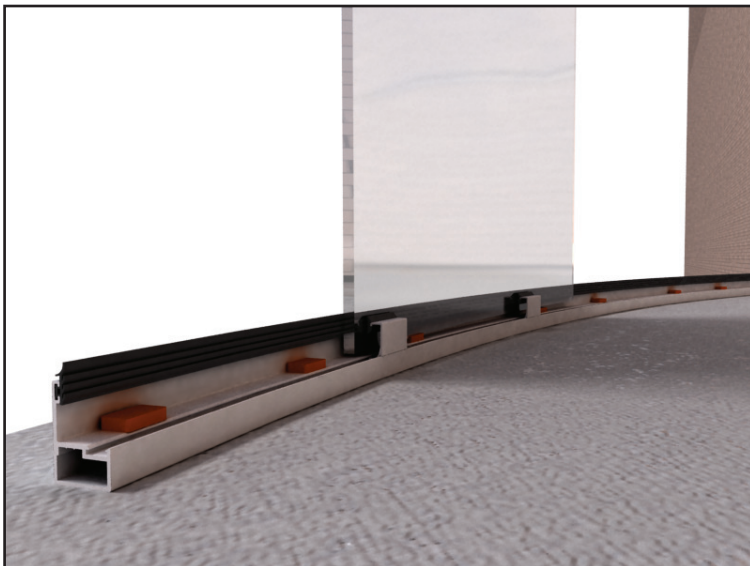
75\* Taking one glass at a time insert the panel upwards into the gap between the glazing bead and handrail



76\* Lower the glass back down onto the orange packers



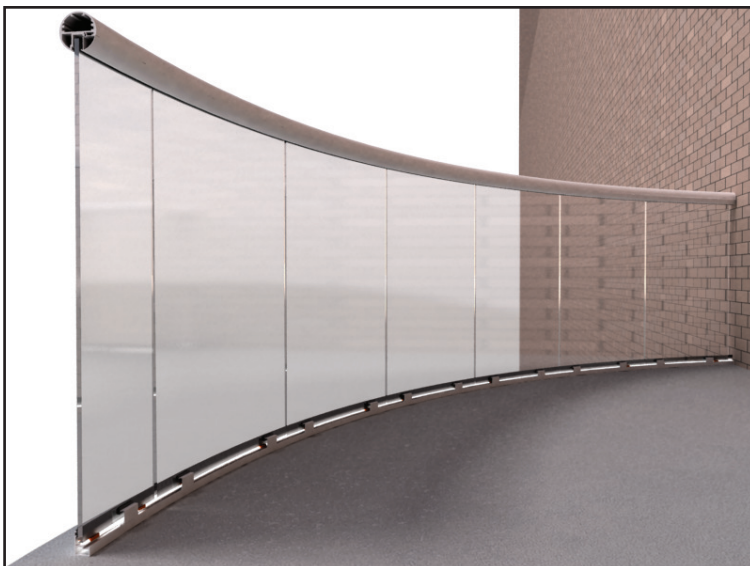
77\* Place small temporary glazing beads on the bottom rail, two per glass panel



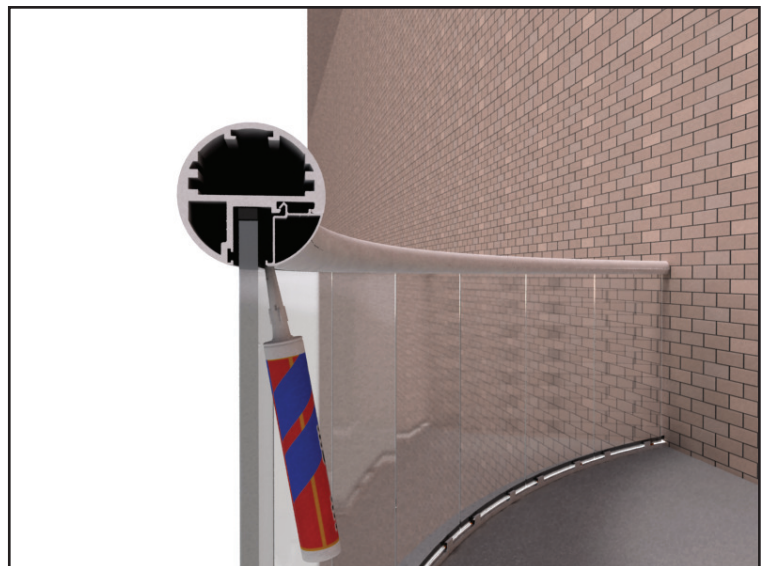
78\* Push in 3mm rubber to hold them firmly against the glass



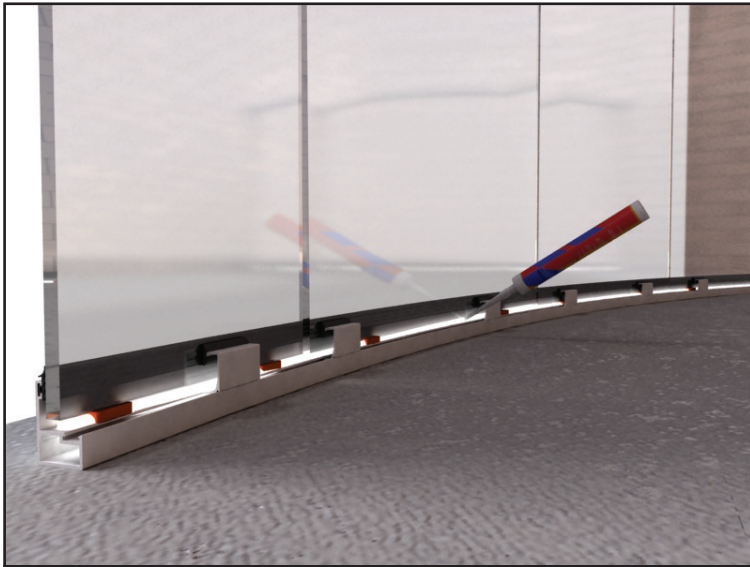
79\* In this fashion, one at a time insert all the glass panels



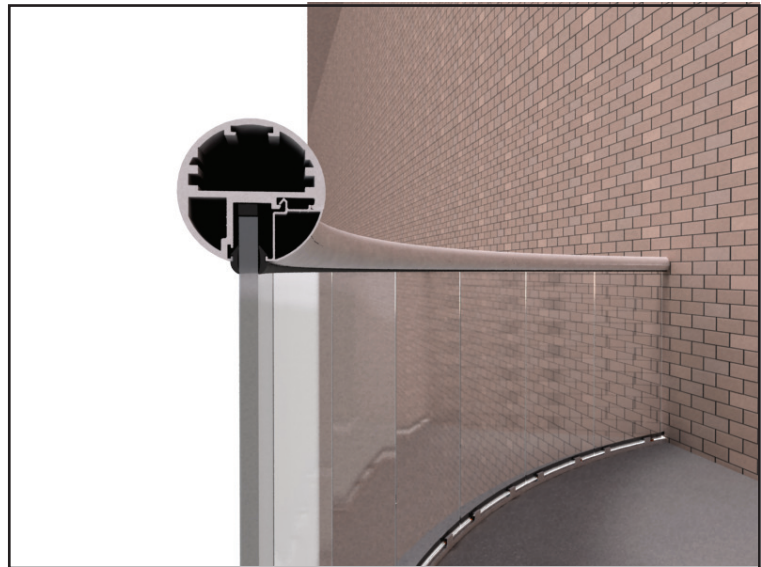
80\* Align all the panels and gaps



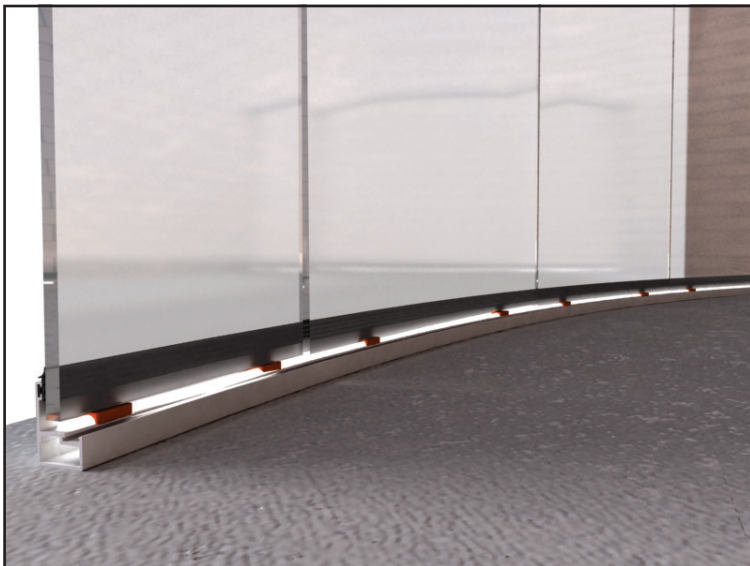
81\* Inject silicone by pushing the silicone nozzle into the gap between the bead and glass and pushing silicone upwards into the cavity



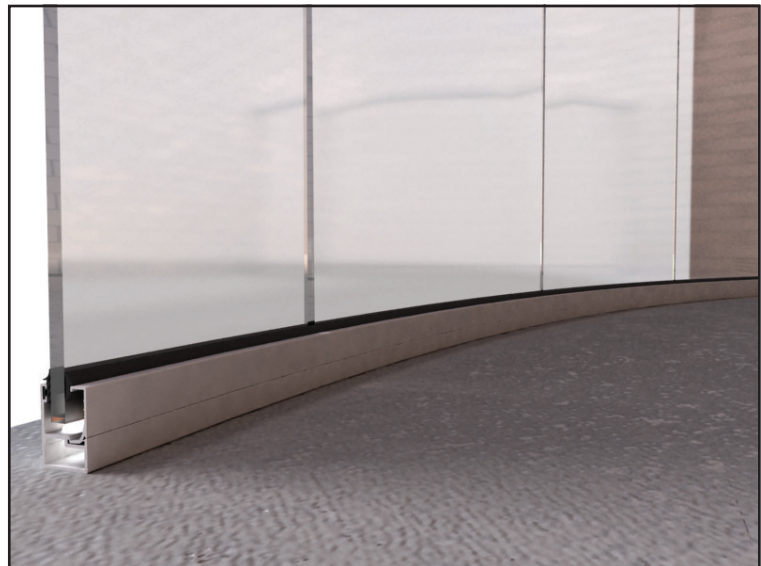
82\* Apply a thick bead of high quality silicone sealant to continuously fill the gap between bottom of glass and bottom rail



83\* Glaze the top rail using 3mm rubber both sides (not the fixed rubber, but same as internal rubber both sides)



84\* Once the silicone is dry on the bottom rail remove the temporary beads and replace the full length curved bead.



85\* Using the 3mm rubber glaze the bottom rail bead against the glass

