



That's Safety!
Seetru Limited

Compressed Air & Gas

Safety Relief Valves and Liquid Level Gauges Ver. 1



Seetru Limited

Quality, Innovation & Service



The Company

Seetru Limited was founded in 1949 with the aim of producing the finest liquid level gauges so customers could see the true level even under the most severe conditions.

This philosophy of making the finest through innovation continued with the introduction of the Seetru range of pressure relief devices, circa 1950; the Seetru Tutchtite® sealing system revolutionized the safety valve market with valves that do not leak even after repeated popping and for high pressures.

Today, Seetru have an extensive range of pressure relief valves and liquid level gauges which carry a wide range of international approvals and are supplied worldwide.



The Products

Seetru are manufacturers of safety relief and other special purpose ancillary valves for a wide range of compressed air, industrial gas, refrigerants, powder, steam, liquid and liquefied gas applications.

These valves meet important international standards which include: BS 6759 Parts 2 & 3, AD-Merkblatt A2, ISO 4126 and ASME Section VIII design codes as well as type test approvals from TÜV and the National Board. The products comply with the requirements of the European Pressure Equipment Directive 97/23/EC (PED) and are available with both the CE mark as well as the UV stamp, and have wide international approvals such as the Russian GOST and RTN and the Canadian CRN.

Seetru also has a wide range of special purpose valves, which are largely for the compressed air industry and for medium sized industrial diesel engines. These include minimum pressure valves for screw type compressors and air starting valves for medium size industrial and marine diesel engines.

Seetru liquid level gauges are primarily of two types, sight gauges and magnetic float by-pass gauges. Many of the gauges are direct reading though most have optional electronic remote reading systems and computer interfaces. The range includes the Quickmount, Seemag and CPI gauges for industrial and chemical applications and the Seeflex for marine applications.

The company's substantial design and development department, which includes TÜV approved testing facilities, enables it to provide extensive bespoke design, advisory and manufacturing services to develop or adapt individual products for new applications.

Tel: +44 (0)117 927 9204 Fax: +44 (0)117 929 8193 Email: sales@seetru.com Web: www.seetru.com

Compressed Air & Gas GA 818

1

The Seetru 'GA' & 'GP' Range

The Seetru range of safety valves for compressed air and gas are compact, highly efficient and incorporate the exclusive Tutchtite® seal technology for repeatable bubble-tight sealing performance. Designed for applications including; air/gas compressors, specialist gas plants, chemical equipment and piping, pressure vessels, thermal relief and medical gases etc.

These valves are manufactured in bronze, brass or stainless steel and offer a wide range of connections, for applications up to 250 °C. Manufactured in accordance with a wide range of international standards and approvals such as TÜV (Germany) to AD Merkblatt A2, National Board UV Stamp to ASME Section VIII Division 1, GOST/RTN, and compliant with the requirements of the Pressure Equipment Directive 97/23/EC (CE marked).

These valves are available with a wide range of sealing materials and technologies as well as a comprehensive range of manual relieving devices to suit application requirements.

GA 81806 specifications

Connections	BSP & NPT	Inlet	
		From	To
Pressure range	bar	2.80	36
	psi	40.60	522

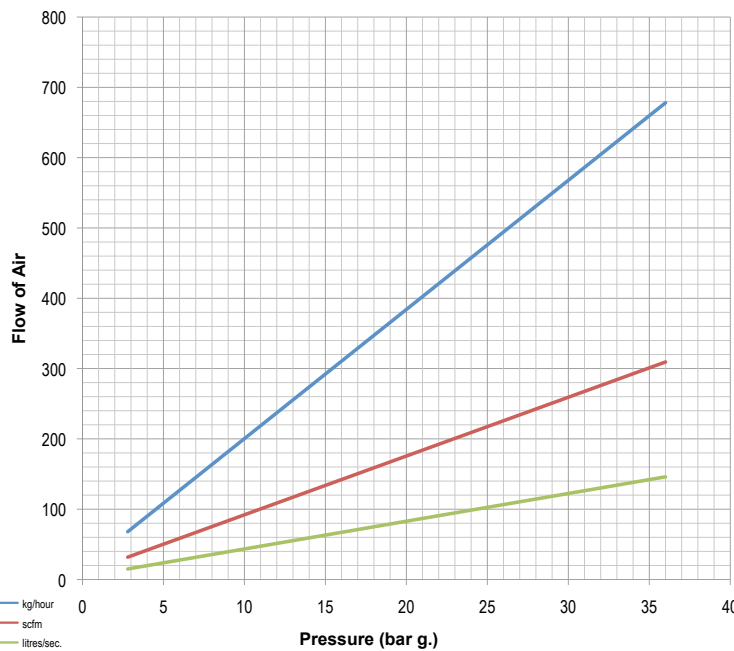
Temperature range -30°C to 200°C (subject to seal material)

Flow area 28.27mm² (6.00 mm inlet bore diameter)

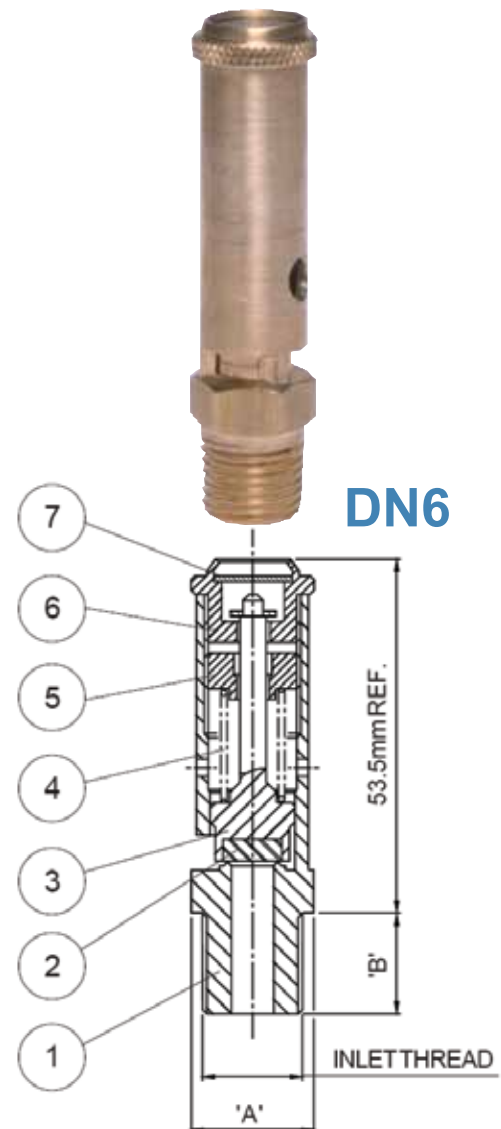
Notes

- Relieving pressure is set pressure +10%
- Reseating pressure is set pressure -10%

Discharge capacity's



Approvals



Materials of construction

	ASME	GA 81706
	PED/TÜV/ASME	GA 81106
	PED/TÜV	GA 81806
1	Body	Brass CW614N
2	Seal	To Suit
3	Plunger	Brass CW614N
4	Spring	St. Steel 1.4310 (302)
5	Adjuster	Brass CW614N
6	Cap	Brass CW614N
7	Nameplate	Aluminium Alloy

1

Compressed Air & Gas GA 818

GA 81808 specifications

Connections	BSP & NPT	Inlet	
		From	To
Pressure range	bar	0.55	21
	psi	7.98	304.50

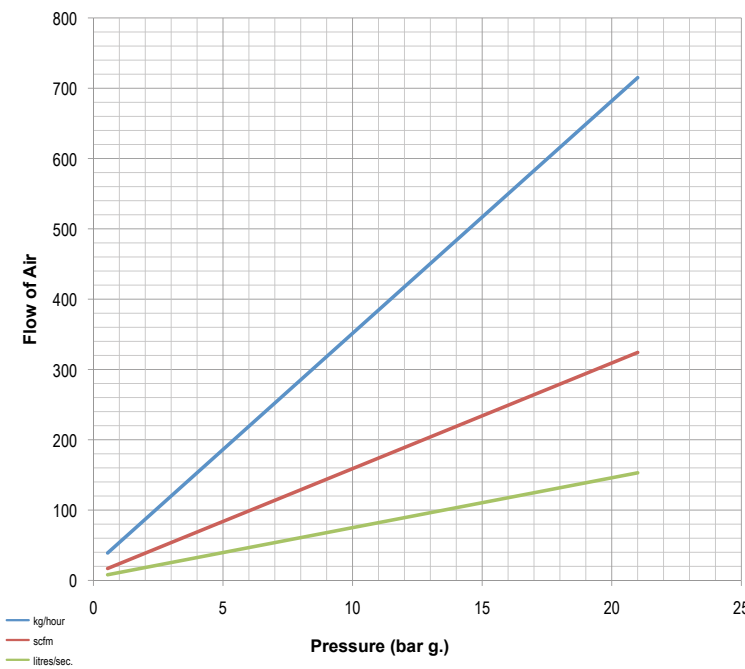
Temperature range -15°C to 200°C (subject to seal material)

Flow area 50.27mm² (8.00 mm inlet bore diameter)

Notes

- Relieving pressure is set pressure +10% (0.1 bar g. below 1.0 bar g.)
- Reseating pressure is set pressure -10% (0.3 bar g. below 3.0 bar g.)
- Below 3.00 bar g. PED certified only

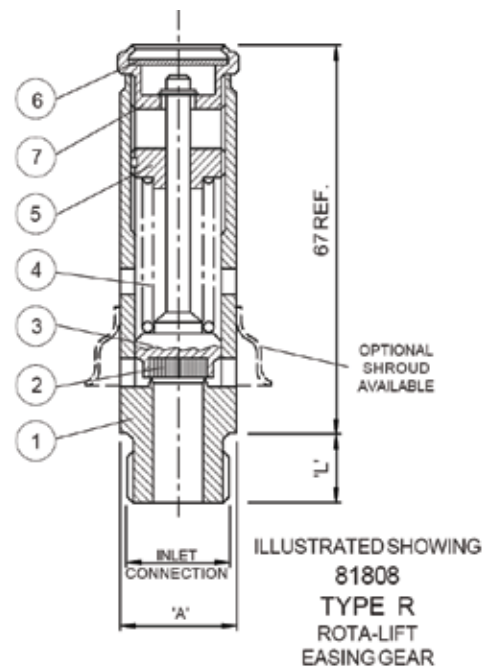
Discharge capacity's



Approvals



DN8



Materials of construction

	ASME	GA 81708	GA 82708
	PED/TÜV/ASME	GA 81108	GA 82108
	PED/TÜV	GA 81808	GA 82808
1 Body	Brass CW614N	Brass CW614N	Brass CW614N
2 Seal	Viton	Viton	Viton
3 Valve disc	Brass CW614N	Brass CW614N	Brass CW614N
4 Spring	St. Steel 1.4310 (302)	St. Steel 1.4401 (316)	St. Steel 1.4401 (316)
5 Adjuster	Brass CW614N	Brass CW614N	Brass CW614N
6 Nameplate	Aluminium Alloy	Aluminium Alloy	Aluminium Alloy
7 Cap	Brass CW614N	Brass CW614N	Brass CW614N
8 Adaptor	-	-	St. Steel
9 Dowty seal	-	-	Viton

Compressed Air & Gas GA 818

1

GA 81810 specifications

Connections	BSP & NPT	Inlet	
		½" to ¾"	
Pressure range		From	To
	bar	0.48	46
	psi	6.96	667

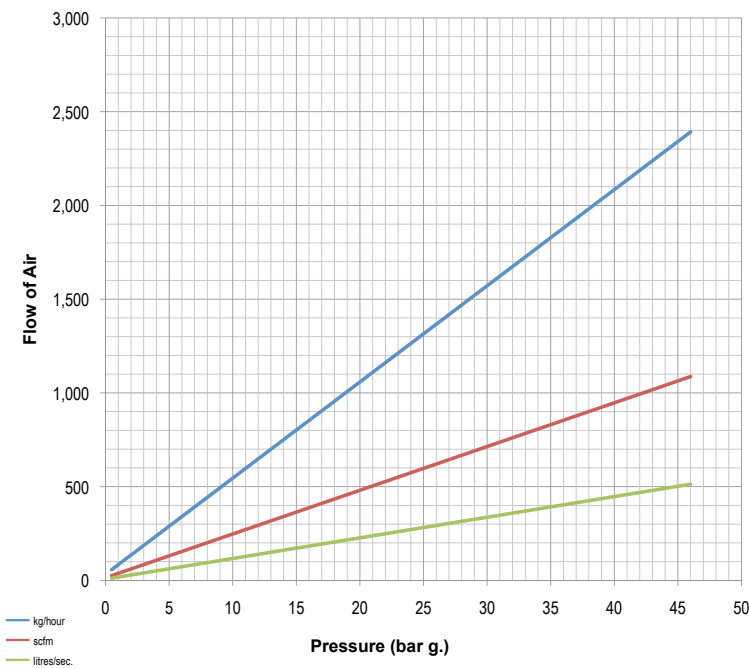
Temperature range -15°C to 200°C (subject to seal material)

Flow area 78.54mm² (10.00 mm inlet bore diameter)

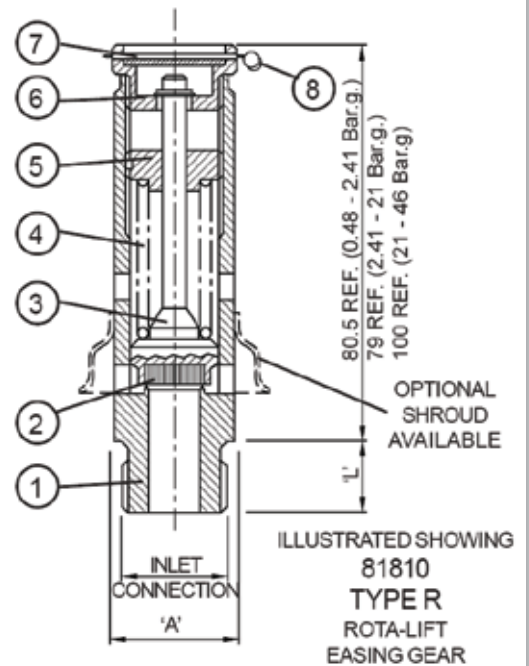
Notes

- Relieving pressure is set pressure +10% (0.1 bar g. below 1.0 bar g.)
- Reseating pressure is set pressure -10% (0.3 bar g. below 3.0 bar g.)
- Below 2.40 bar g. PED certified only

Discharge capacity's



DN10



Materials of construction

	ASME	GA 81710	GA 82710
	PED/TÜV/ASME	GA 81110	GA 82110
	PED/TÜV	GA 81810	GA 82810
1	Body	Brass CW614N	Brass CW614N
2	Seal	Viton	Viton
3	Plunger	Brass CW614N	Brass CW614N
4	Spring	St. Steel 1.4310 (302)	St. Steel 1.4401 (316)
5	Adjuster	Brass CW614N	Brass CW614N
6	Lifting cap	Brass CW614N	Brass CW614N
7	Nameplate	Aluminium Alloy	Aluminium Alloy
8	Wire & Seal	St. Steel & Lead	St. Steel & Lead
9	Adaptor	-	St. Steel
10	Dowty seal	-	Viton

Approvals



1

Compressed Air & Gas GA 818

GA 81813 specifications

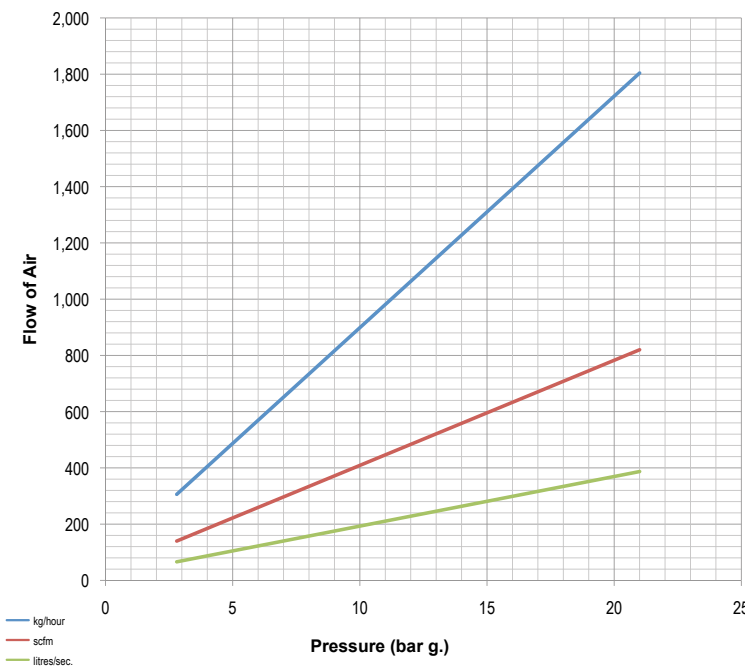
Connections	BSP & NPT	Inlet	
		1/2" to 3/4"	
Pressure range	bar	From	To
	psi	2.80	21
		40.60	304.50

Temperature range -15°C to 200°C (subject to seal material)

Flow area 132.73mm² (13.00 mm inlet bore diameter)

Notes
 • Relieving pressure is set pressure +10%
 • Reseating pressure is set pressure -10%

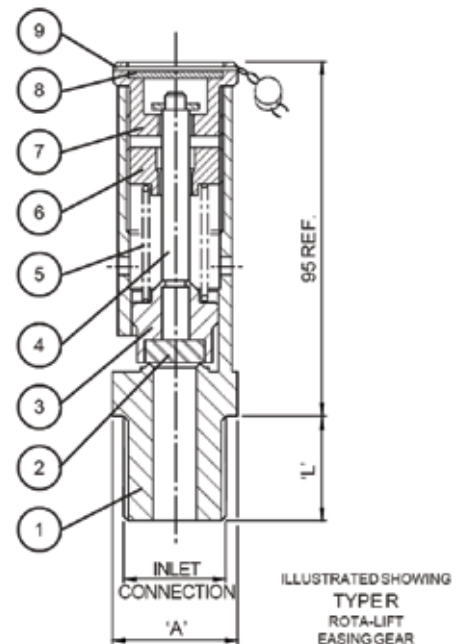
Discharge capacity's



Approvals



DN13



Materials of construction

	ASME	GA 81713
	PED/TÜV/ASME	GA 81113
	PED/TÜV	GA 81813
1	Body	Brass CW614N
2	Seal	Viton
3	Valve disc	Brass CW614N
4	Spindle	St. Steel 1.4057 (431)
5	Spring	St. Steel 1.4310 (302)
6	Adjuster	Brass CW614N
7	Lifting cap	Brass CW614N
8	Nameplate	Aluminium Alloy
9	Wire & Seal	St. Steel & Lead

Compressed Air & Gas GA 818

1

GA 81815 specifications

		Inlet	
Connections	BSP & NPT	¾" to 1"	
		From	To
Pressure range	bar	2.50	21
	psi	36.25	304.50

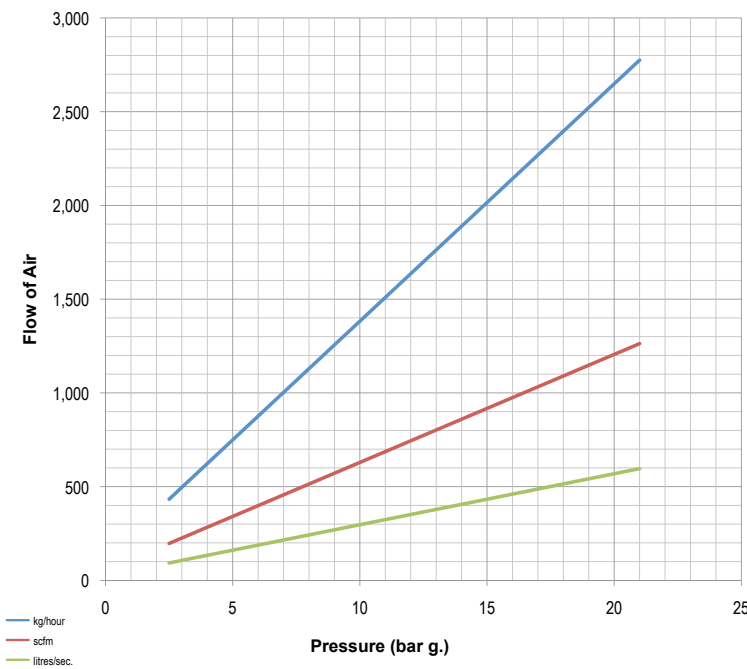
Temperature range -15°C to 200°C (subject to seal material)

Flow area 181.46mm² (15.20 mm inlet bore diameter)

Notes

- Relieving pressure is set pressure +10%
- Reseating pressure is set pressure -10%

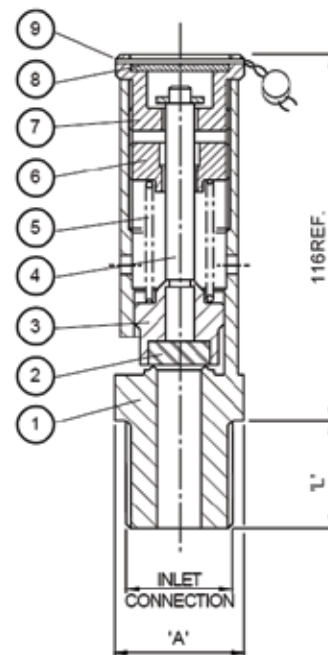
Discharge capacity's



Approvals



DN15



Materials of construction

	ASME	GA 81715
	PED/TÜV/ASME	GA 81115
	PED/TÜV	GA 81815
1	Body	Brass CZ121
2	Seal	Viton
3	Valve disc	Brass CZ121
4	Spindle	St. Steel
5	Spring	St. Steel 1.4310 (302)
6	Adjuster	Brass CZ121
7	Lifting cap	Brass CZ121
8	Nameplate	Aluminium Alloy
9	Wire & Seal	St. Steel & Lead

1

Compressed Air & Gas GA 730

GA 730 specifications

Connections	BSP & NPT	Inlet	
		¼" to ½"	
Pressure range		From	To
	bar	0.27	3.92
	psi	17.50	253.75

Temperature range -20°C to 200°C (subject to seal material)

Flow area 49.02mm² (7.90 mm inlet bore diameter)

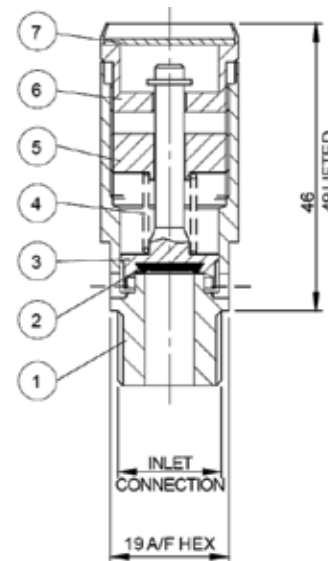
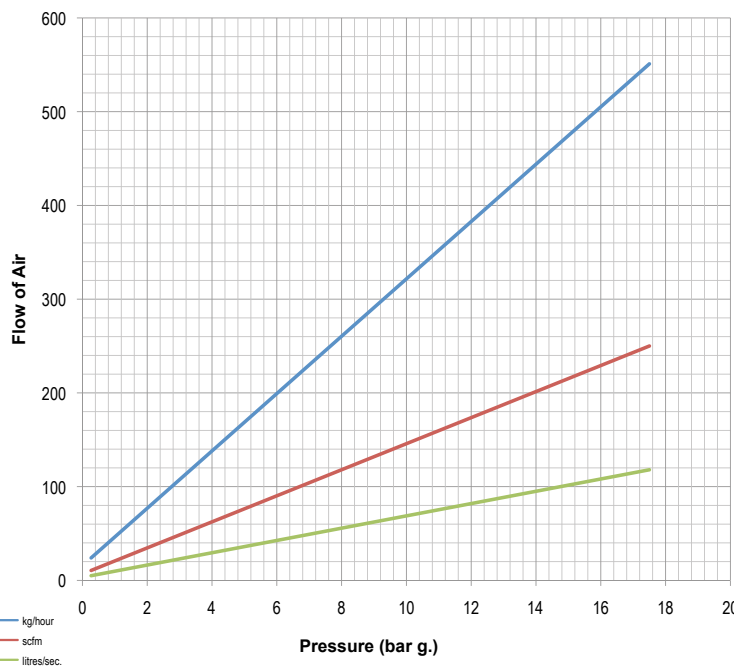
Notes

- Relieving pressure is set pressure +10% (0.1 bar g. below 1.0 bar g.)
- Reseating pressure is set pressure -10% (0.3 bar g. below 3.0 bar g.)



DN8

Discharge capacity's

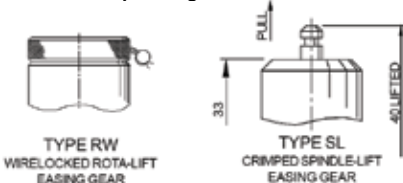


ILLUSTRATED SHOWING
TYPE R
CRIMPED ROTA-LIFT
EASING GEAR

Approvals



Alternate Top Fitting



Materials of construction

	GA 73008	GA 74008	GA 75008
1 Body	Brass CZ121	St. Steel	Brass CZ132
2 Seal	To Suit	To Suit	To Suit
3 Plunger	Brass CZ121	St. Steel	Brass CZ132
4 Spring	St. Steel 1.4310 (302)	St. Steel 1.4310 (302)	St. Steel 1.4310 (302)
5 Adjuster	Brass CZ121	St. Steel	Brass CZ132
6 Cap	Brass CZ121	St. Steel	-
7 Nameplate	Aluminium Alloy	Aluminium Alloy	-

Compressed Air & Gas GA 616

1

GA 61682 specifications

		Inlet	
Connections	BSP & NPT	1/4" to 1/2"	
		From	To
Pressure range	bar	14.50	55
	psi	210.25	797.50

Temperature range -20°C to 200°C (subject to seal material)

Flow area 50.27mm² (8.00 mm inlet bore diameter)

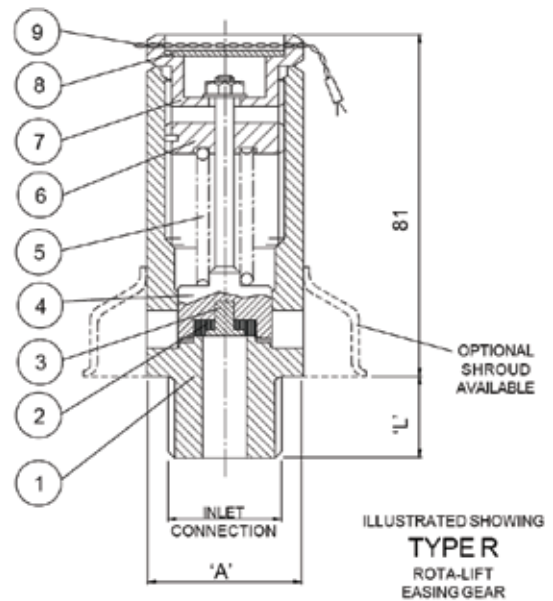
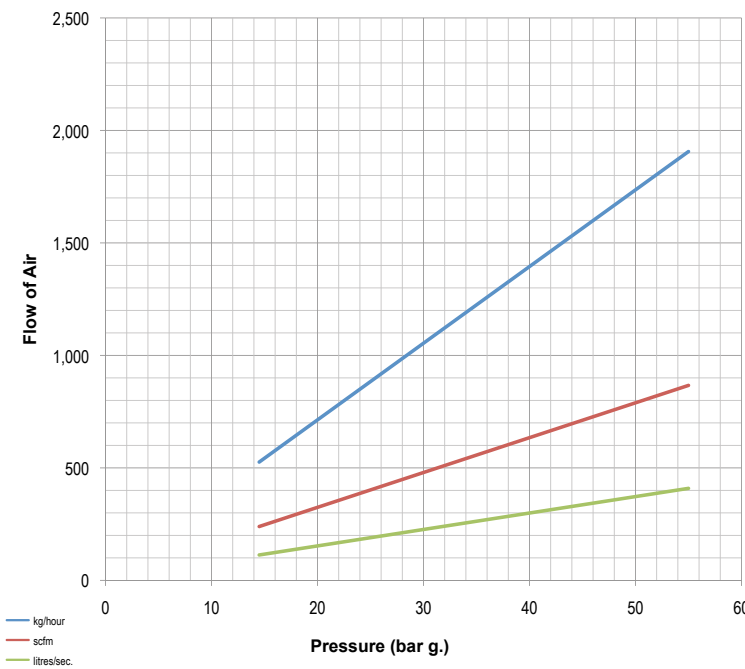
Notes

- Relieving pressure is set pressure +10%
- Reseating pressure is set pressure -10%
- Stable operation on flows down to 80% of valve rated capacity



DN8

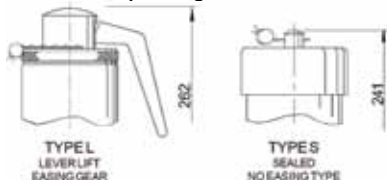
Discharge capacity's



Approvals



Alternate Top Fitting



Materials of construction

		GA 61682
1	Body	Brass CZ121
2	Seal	To Suit
3	Seal retainer	Brass CZ121
4	Plunger	St. Steel
5	Spring	St. Steel 1.4310 (302)
6	Adjuster	Brass CZ121
7	Cap	Brass CZ121
8	Nameplate	Aluminium Alloy
9	Wire & Seal	St. Steel & Lead
10	Adaptor	St. Steel
11	Dowty seal	Nitrile

1

Compressed Air & Gas GA 616

GA 61610 specifications

Connections	BSP & NPT	Inlet	
		3/8" to 3/4"	
Pressure range	bar	From 2.30	To 44
	psi	33.35	638

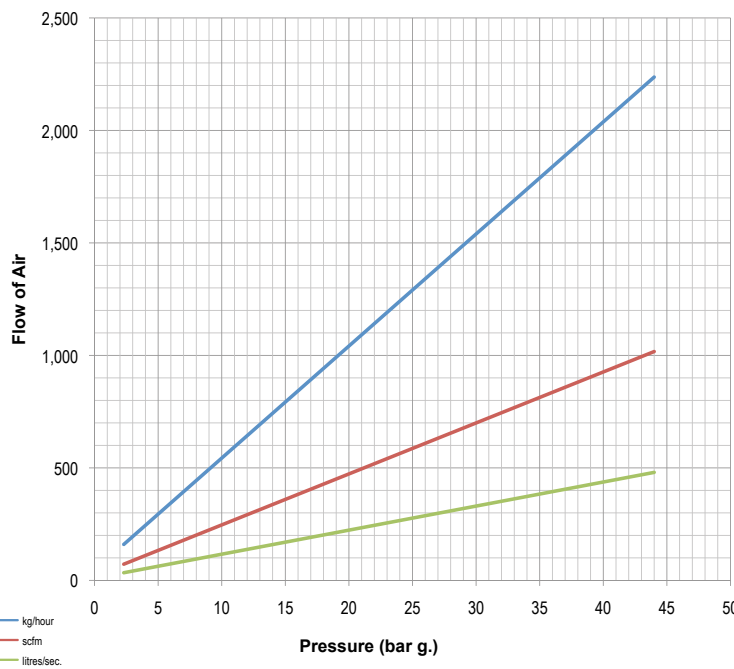
Temperature range -20°C to 200°C (subject to seal material)

Flow area 72.38 mm² (9.60 mm inlet bore diameter)

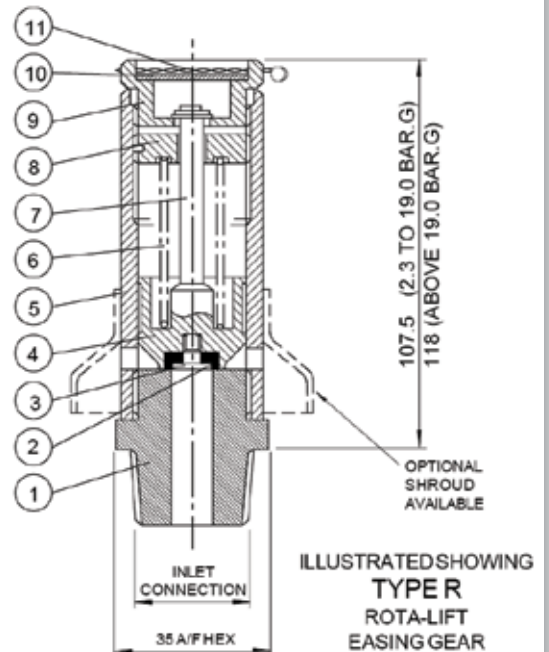
Notes

- Relieving pressure is set pressure +10%
- Reseating pressure is set pressure -10%
- Stable operation on flows down to 50% of valve rated capacity

Discharge capacity's



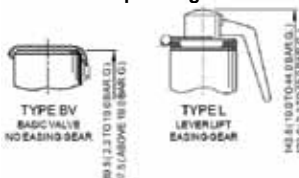
DN10



Approvals



Alternate Top Fitting



Materials of construction

	GA 61610	GA 62610
1 Inlet seat	Brass	St. Steel
2 Seal	To Suit	To Suit
3 Seal retainer	Brass	St. Steel
4 Plunger	Brass	Brass
5 Body	Brass	Brass
6 Spring	St. Steel	St. Steel
7 Spindle	St. Steel	St. Steel
8 Adjuster	Brass	Brass
9 Lifting cap	Brass	Brass
10 Nameplate	Aluminium Alloy	Aluminium Alloy
11 Wire & Seal	St. Steel & Lead	St. Steel & Lead

Compressed Air & Gas GA 616

1

GA 61613 specifications

Connections	BSP & NPT	Inlet	
		3/4" to 1"	
Pressure range		From	To
	bar	2.80	41.40
	psi	40.60	600.30

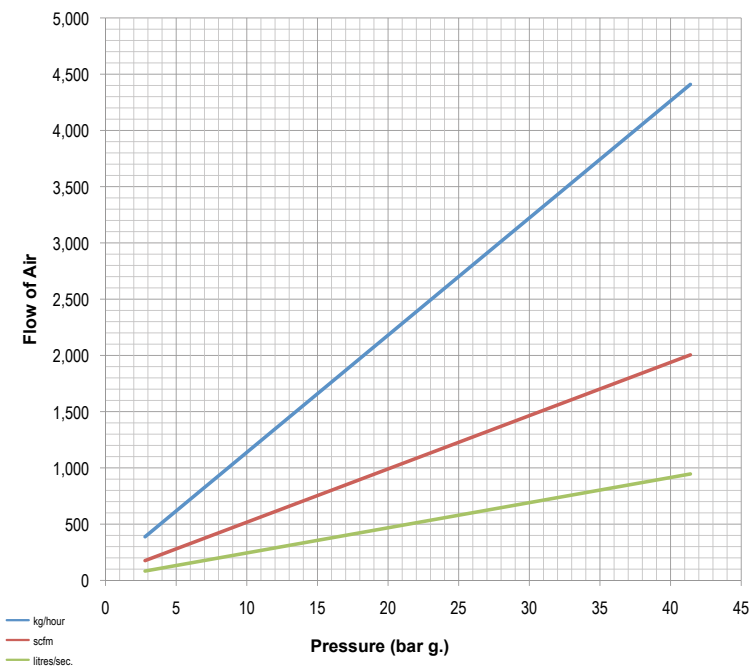
Temperature range -20°C to 200°C (subject to seal material)

Flow area 132.73 mm² (13 mm inlet bore diameter)

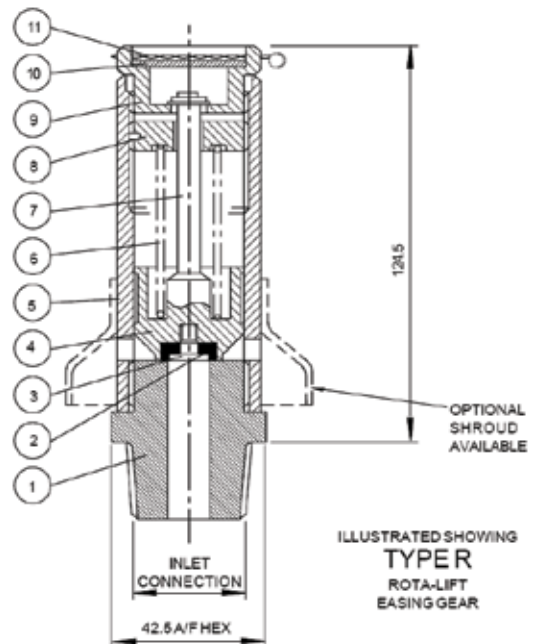
Notes

- Relieving pressure is set pressure +10%
- Reseating pressure is set pressure -10% (0.3 bar g, minimum)
- Stable operation on flows down to 50% of valve rated capacity

Discharge capacity's



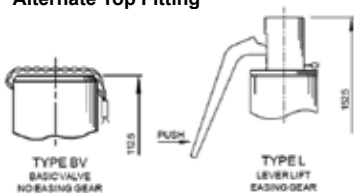
DN13



Approvals



Alternate Top Fitting



Materials of construction

	GA 61613	GA 62613
1 Inlet seat	Brass	St. Steel
2 Seal	To Suit	To Suit
3 Seal retainer	Brass	St. Steel
4 Plunger	Brass	Brass
5 Body	Brass	Brass
6 Spring	St. Steel	St. Steel
7 Spindle	St. Steel	St. Steel
8 Adjuster	Brass	Brass
9 Lifting cap	Brass	Brass
10 Nameplate	Aluminium Alloy	Aluminium Alloy
11 Wire & Seal	St. Steel & Lead	St. Steel & Lead

1

Compressed Air & Gas GA 616

GA 61618 specifications

Connections	BSP & NPT	Inlet	
		1" to 1 1/2"	
Pressure range	bar	From 2.10	To 36
	psi	30.45	522

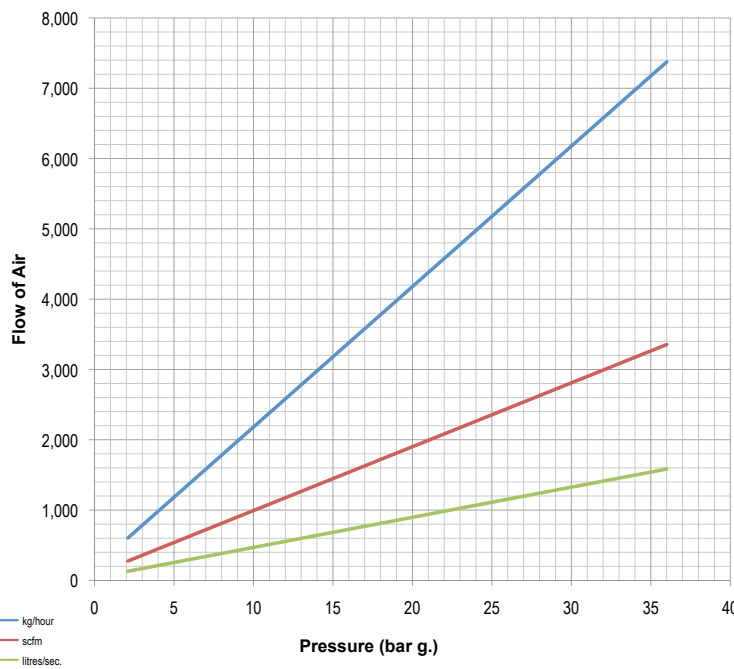
Temperature range -20°C to 180°C (subject to seal material)

Flow area 254.47 mm² (18 mm inlet bore diameter)

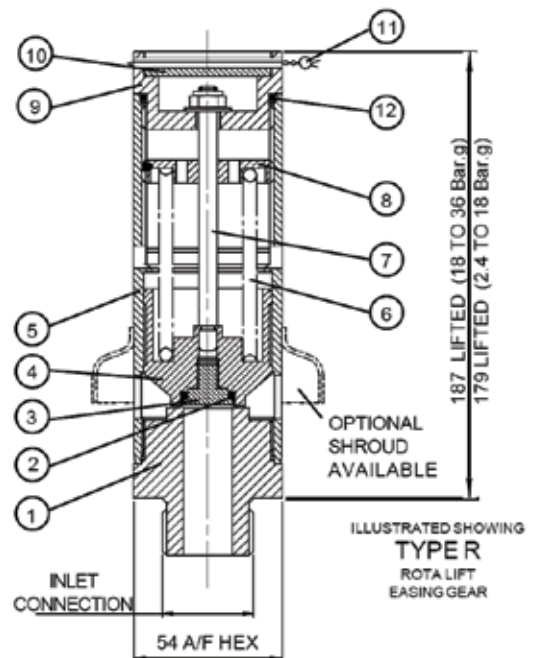
Notes

- Relieving pressure is set pressure +10%
- Reseating pressure is set pressure -10% (0.3 bar g, minimum)
- Stable operation on flows down to 50% of valve rated capacity

Discharge capacity's



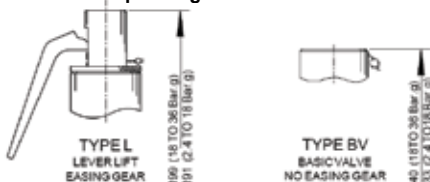
DN18



Approvals



Alternate Top Fitting



Materials of construction

	GA 61618	GA 62618
1 Inlet seat	Brass	St. Steel
2 Seal	To Suit	To Suit
3 Seal retainer	Brass	St. Steel
4 Plunger	Brass	Brass
5 Body	Brass	Brass
6 Spring	St. Steel	St. Steel
7 Spindle	St. Steel	St. Steel
8 Adjuster	Brass	Brass
9 Lifting cap	Brass	Brass
10 Nameplate	Aluminium Alloy	Aluminium Alloy
11 Wire & Seal	St. Steel & Lead	St. Steel & Lead
12 'O' ring	To Suit	To Suit

Compressed Air & Gas GA 616

1

GA 61620 specifications

Connections	BSP & NPT	Inlet	
		1" to 2"	
Pressure range		From	To
	bar	2	18
	psi	29	261

Temperature range -20°C to 200°C (subject to seal material)

Flow area 314.16 mm² (20 mm inlet bore diameter)

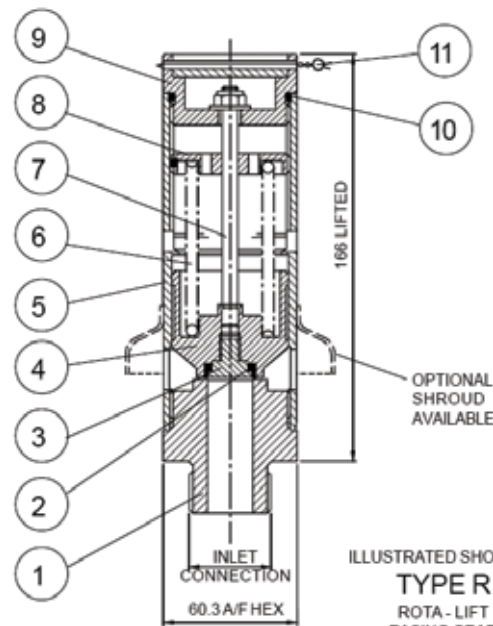
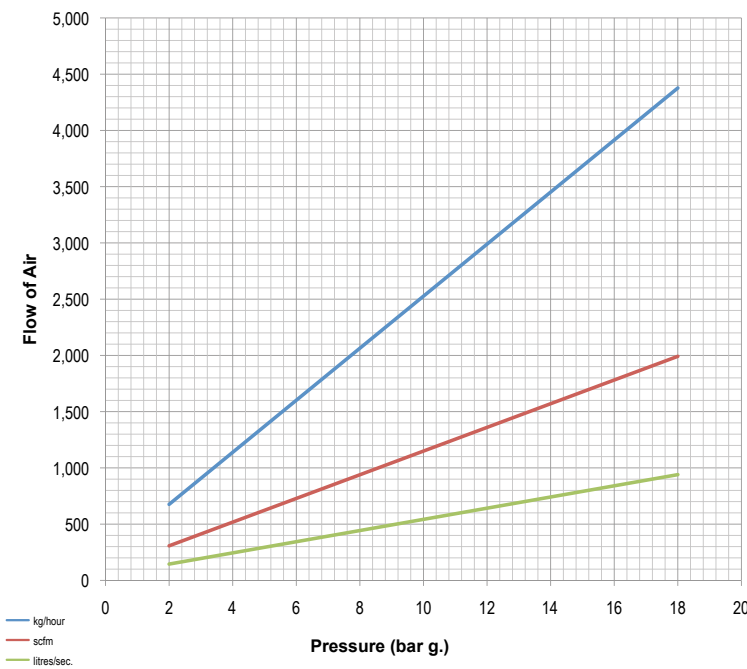
Notes

- Relieving pressure is set pressure +10%
- Reseating pressure is set pressure -10% (0.3 bar g. minimum)



DN20

Discharge capacity's

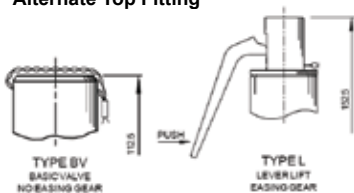


ILLUSTRATED SHOWING
TYPE R
ROTA-LIFT
EASING GEAR

Approvals



Alternate Top Fitting



Materials of construction

	GA 61620	GA 62620
1 Inlet seat	Brass	St. Steel
2 Seal	To Suit	To Suit
3 Seal retainer	Brass	St. Steel
4 Plunger	Brass	Brass
5 Body	Brass	Brass
6 Spring	St. Steel	St. Steel
7 Spindle	St. Steel	St. Steel
8 Adjuster	Brass	Brass
9 Lifting cap	Brass	Brass
10 'O' ring	To Suit	To Suit
11 Wire & Seal	St. Steel & Lead	St. Steel & Lead

1

Compressed Air & Gas GA 106

GA 10625 specifications

Connections	BSP & NPT	Inlet	
		From	To
Pressure range	bar	0.50	12
	psi	7.25	174

Temperature range -20°C to 180°C (subject to seal material)

Flow area 490.87 mm² (25 mm inlet bore diameter)

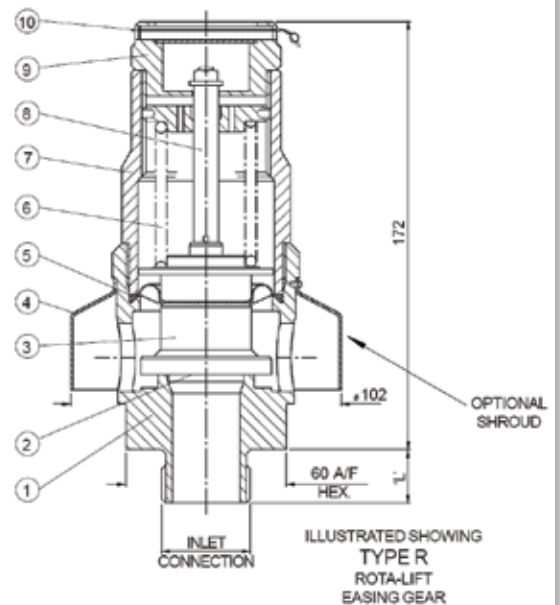
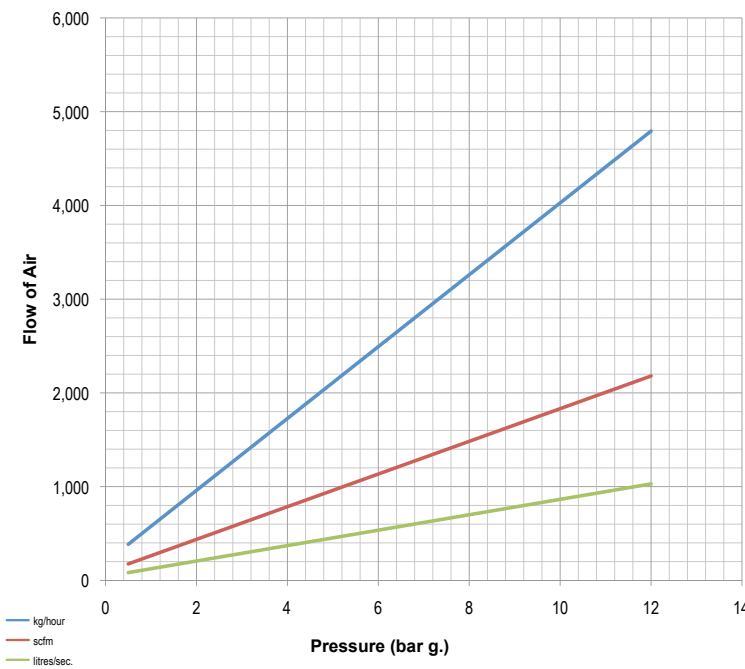
Notes

- Relieving pressure is set pressure +10% (0.1 bar g. below 1 bar g.)
- Reseating pressure is set pressure -10% (-0.3 bar g. below 2 bar g.)



DN25

Discharge capacity's



Approvals



Materials of construction

	GA 10625	GA 11625
1 Body	Brass	Aluminium
2 Seal/ Disc Assembly	To Suit	To Suit
3 Shroud	Brass	Aluminium
4 Diaphragm	Aluminium	Aluminium
5 Shroud	Viton	Viton
6 Spring	St. Steel	St. Steel
7 Bonnet	Brass	Aluminium
8 Spindle	St. Steel	St. Steel
9 Relieving screw	Brass	Aluminium
10 Wire & Seal	St. Steel & Lead	St. Steel & Lead

Compressed Air & Gas GA 311

1

GA 31140 specifications

Connections	BSP & NPT	Inlet	
		2" to 2½"	
Pressure range		From	To
	bar	2.80	9.40
	psi	40.60	136.30

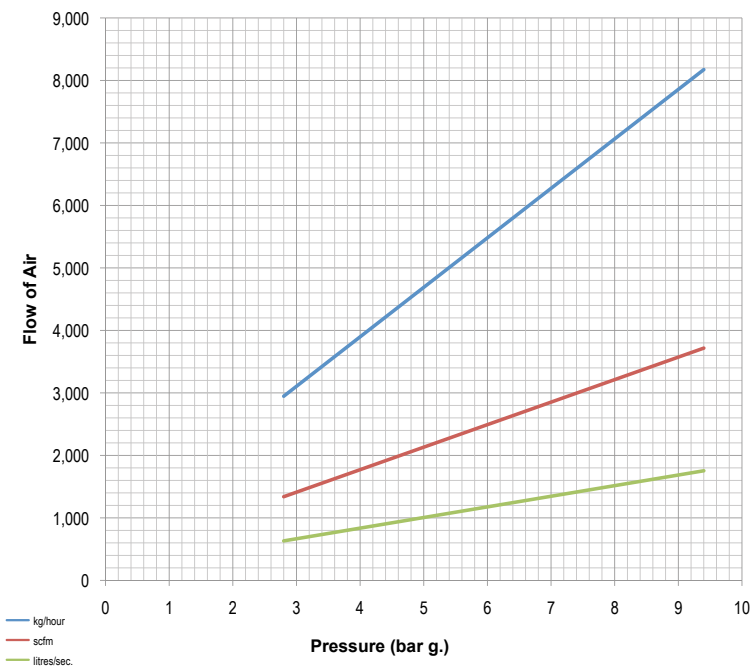
Temperature range -20°C to 200°C (subject to seal material)

Flow area 1104.47mm² (37.50 mm inlet bore diameter)

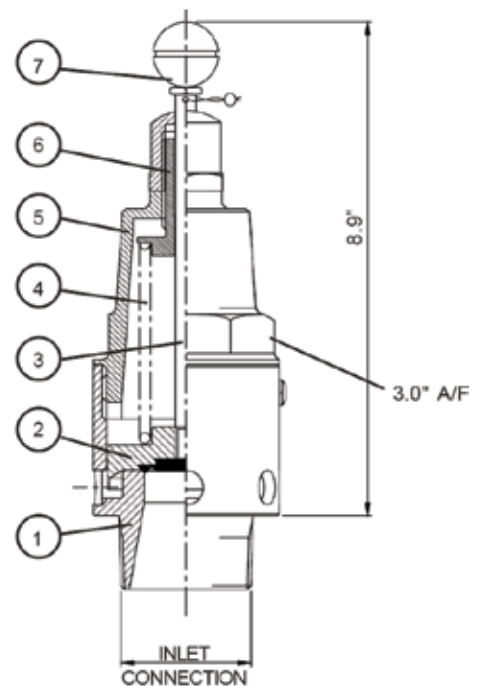
Notes

- Relieving pressure is set pressure +10% (0.1 bar g. below 1 bar g.)
- Reseating pressure is set pressure -10% (-0.3 bar g. below 2 bar g.)

Discharge capacity's



DN40



Approvals



Materials of construction

1	Body	Brass
2	Plunger	Brass
3	Spindle	St. Steel
4	Spring	St. Steel
5	Cap	Brass
6	Adjuster	Brass
7	Knob	Plastic

1

Compressed Air & Gas GA 740

GA 74008 specifications

Connections	BSP & NPT	Inlet	
		¼" to ½"	
Pressure range		From	To
	bar	0.27	3.92
	psi	17.50	253.75

Temperature range -20°C to 200°C (subject to seal material)

Flow area 49.02mm² (7.90 mm inlet bore diameter)

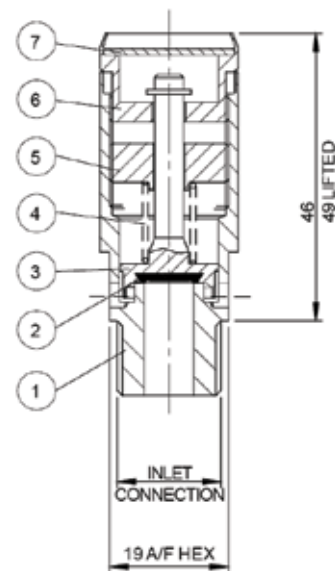
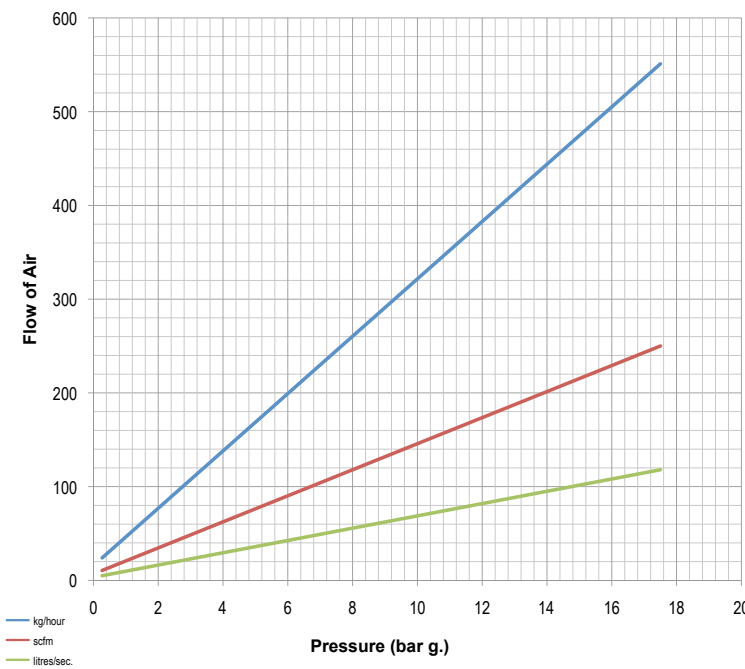
Notes

- Relieving pressure is set pressure +10% (0.1 bar g. below 1 bar g.)
- Reseating pressure is set pressure -10% (0.3 bar g. below 3 bar g.)



DN8

Discharge capacity's



ILLUSTRATED SHOWING
TYPE R
CRIMPED ROTA-LIFT
EASING GEAR

Approvals



Materials of construction

	GA 73008	GA 74008	GA 75008
1 Body	Brass CZ121	St. Steel	Brass CZ121
2 Seal	To Suit	To Suit	To Suit
3 Plunger	Brass CZ121	St. Steel	Brass CZ121
4 Spring	St. Steel 1.4310 (302)	St. Steel 1.4310 (302)	St. Steel 1.4310 (302)
5 Adjuster	Brass CZ121	St. Steel	Brass CZ121
6 Cap	Brass CZ121	St. Steel	-
7 Nameplate	Aluminium Alloy	Aluminium Alloy	-

Compressed Air & Gas GA 848

1

GA 84888 specifications

		Inlet	
Connections	BSP & NPT	1/4" to 1/2"	
		From	To
Pressure range	bar	0.55	7.98
	psi	21.00	304.50

Temperature range -15°C to 180°C (subject to seal material)

Flow area 50.27mm² (8.00 mm inlet bore diameter)

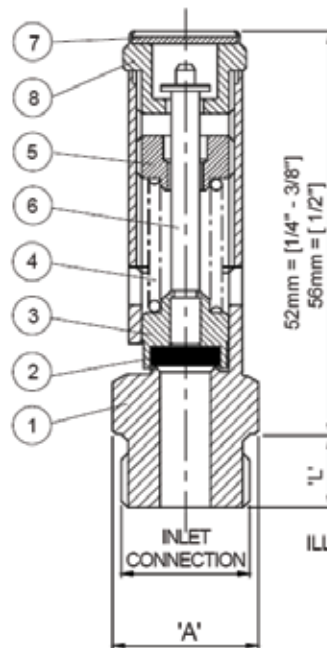
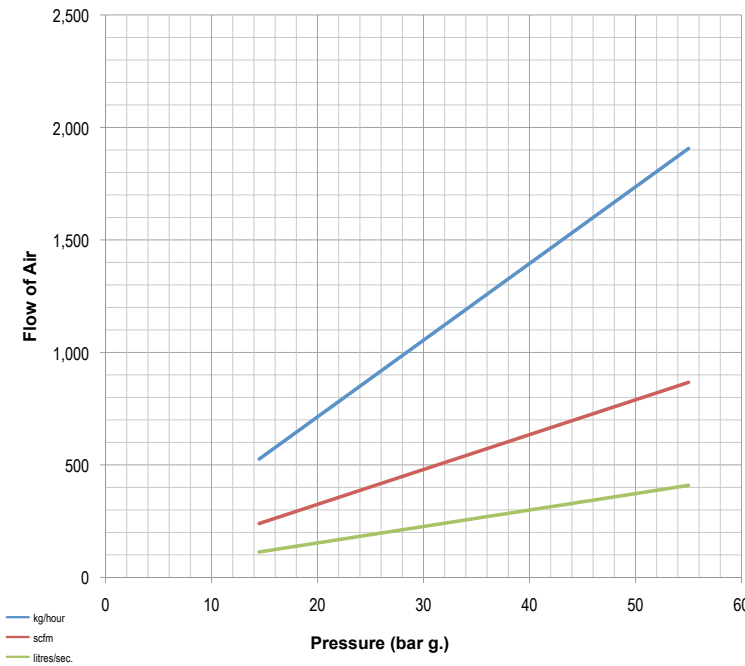
Notes

- Relieving pressure is set pressure +10% (0.1 bar g. below 1 bar g.)
- Reseating pressure is set pressure -10% (0.3 bar g. below 3 bar g.)
- Below 3 bar g., PED certified only



DN8

Discharge capacity's



ILLUSTRATED SHOWING
84888
TYPE R
ROTA-LIFT
EASING GEAR

Approvals



Materials of construction

ASME	GA 84788
PED/TÜV/ASME	GA 84188
PED/TÜV	GA 84888
1 Body	St. Steel 1.4401 (316)
2 Seal	Viton
3 Valve disc	St. Steel 1.4401 (316)
4 Spring	St. Steel 1.4310 (302)
5 Adjuster	St. Steel 1.4401 (316)
6 Spindle	St. Steel 1.4057 (431)
7 Nameplate	Aluminium Alloy
8 Cap	St. Steel 1.4401 (316)

1

Compressed Air & Gas GA 550

GA 550 specifications

Connections	BSP & NPT	Inlet	
		¼" to ½"	
Pressure range		From	To
	bar	69	448.20
	psi	1000.50	6498.90

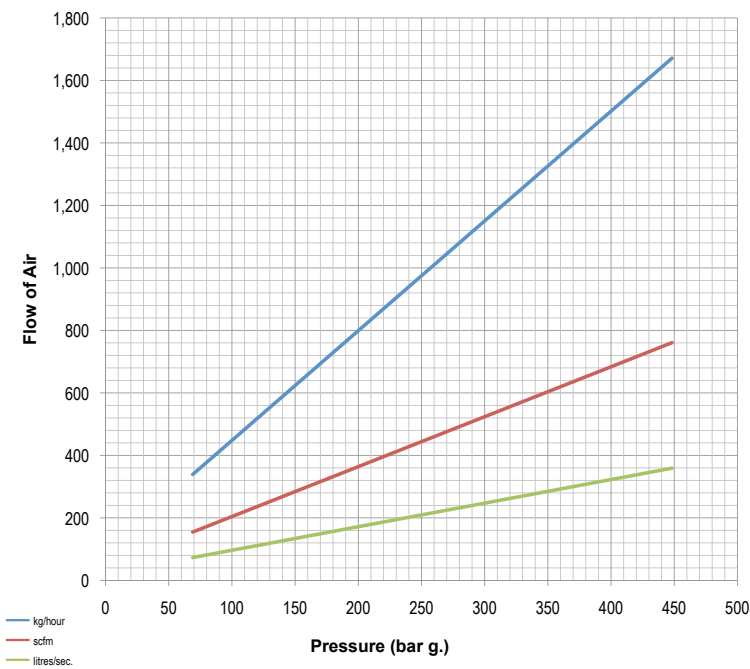
Temperature range -50°C to 180°C (subject to seal material)

Flow area 10.93mm² (3.73 mm inlet bore diameter)

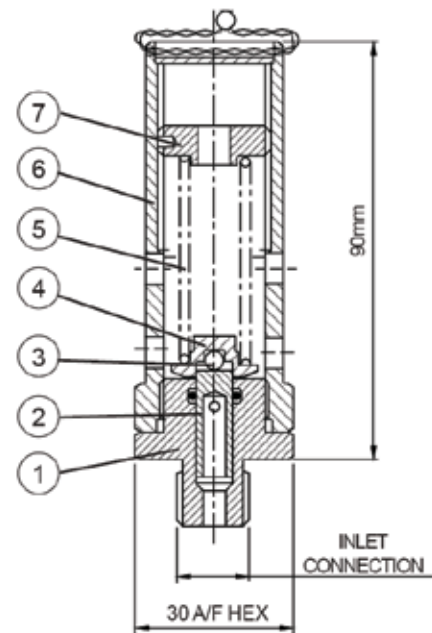
Notes

- Relieving pressure is set pressure +10%
- Reseating pressure is set pressure -15%

Discharge capacity's



DN4



Approvals



Materials of construction

1	Seat	St. Steel
2	Plunger	St. Steel
3	Ball	St. Steel
4	Spring Pad	St. Steel
5	Spring	St. Steel
6	Body	Brass
7	Adjuster	Brass

Compressed Air & Gas GA 312

1

GA 312 specifications

Connections	BSP & NPT	Inlet	
		3/8" to 1/2"	
Pressure range		From	To
	bar	48.20	241.40
	psi	698.90	3500.30

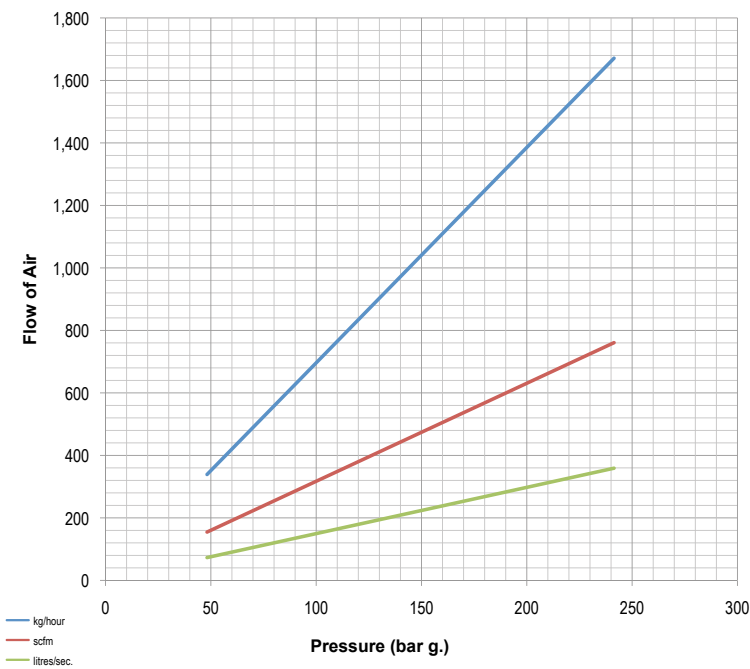
Temperature range -50°C to 180°C (subject to seal material)

Flow area 10.46mm² (3.65 mm inlet bore diameter)

Notes

- Relieving pressure is set pressure +10%
- Reseating pressure is set pressure -15%

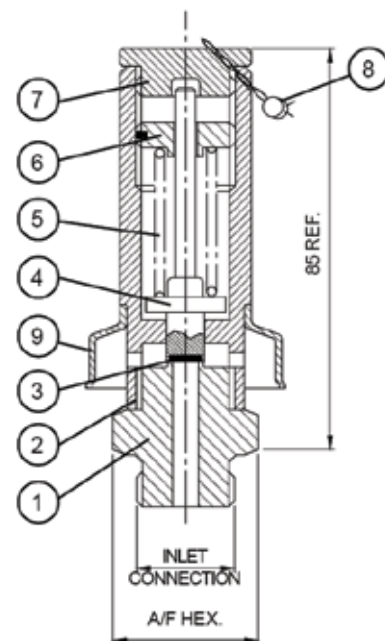
Discharge capacity's



Approvals



1/8"



Materials of construction

1	Seat	St. Steel
2	Body	Brass
3	Seal	To Suit
4	Plunger	St. Steel
5	Spring	St. Steel
6	Adjuster	Brass
7	Cap	Brass
8	Wire & Seal	St. Steel & Lead
9	Shroud	Brass

1

Compressed Air & Gas GA 311

GA 31180 specifications

Connections	BSP & NPT	Inlet	
			1/4"
Pressure range		From	To
	bar	20.60	134.50
	psi	298.70	1950.25

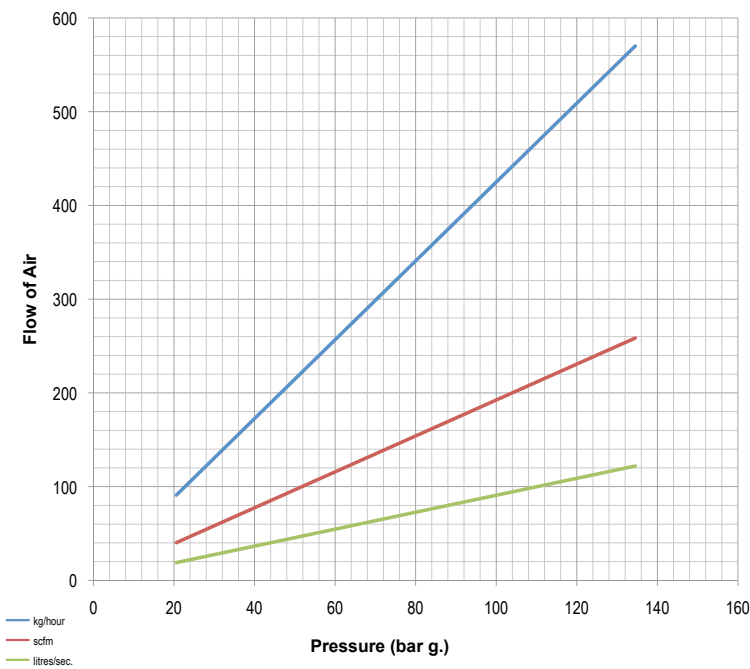
Temperature range -50°C to 200°C (subject to seal material)

Flow area 8.04mm² (3.20 mm inlet bore diameter)

Notes

- Relieving pressure is set pressure +10% (0.1 bar g. below 1 bar g.)
- Reseating pressure is set pressure -10% (-0.3 bar g. below 2 bar g.)

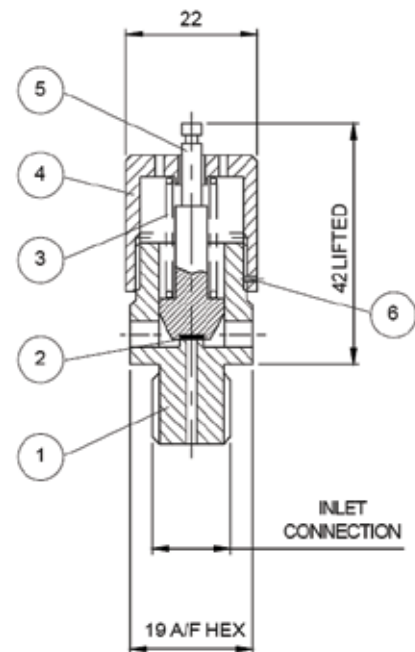
Discharge capacity's



Approvals



DN3



Materials of construction

1	Body	Brass
2	Seal	To Suit
3	Spring	St. Steel
4	Cap	Brass
5	Plunger	Brass
6	Set Screw	Steel

GP 331 specifications

		Inlet	Outlet
Connections	BSP & NPT	3/8" to 1/2"	3/8" to 1/2"
		From	To
Pressure range	bar	48	241
	psi	696	3494.50

Temperature range -50°C to 200°C (subject to seal material)

Flow area 10.52mm² (3.66 mm inlet bore diameter)

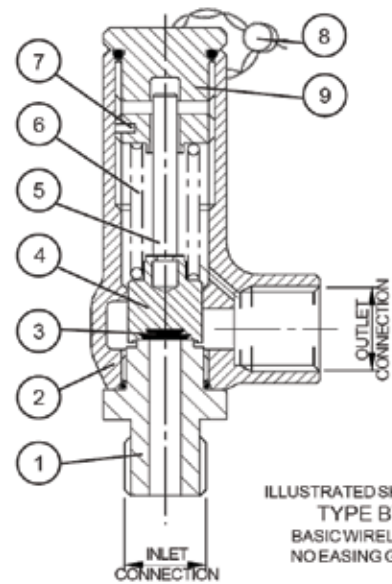
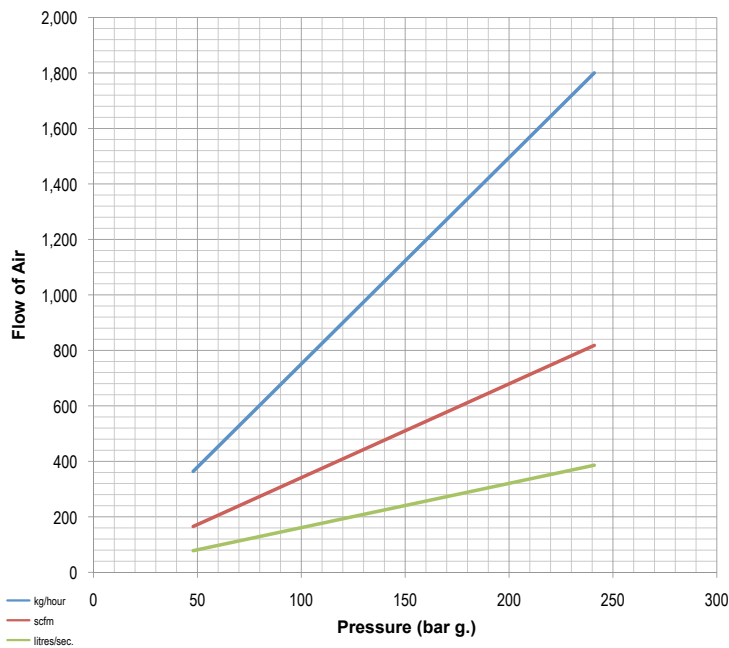
Notes

- Relieving pressure is set pressure +10%
- Reseating pressure is set pressure -10%



1/8"

Discharge capacity's



ILLUSTRATED SHOWING
TYPE BV
BASIC WIRELOCK
NO EASING GEAR

Approvals



Materials of construction

		GP 33110	GP 34110	GP 34110
1	Seat	St. Steel	St. Steel	St. Steel (316)
2	Body	Brass	St. Steel	St. Steel (316)
3	Seal	To Suit	To Suit	To Suit
4	Plunger	St. Steel	St. Steel	St. Steel (316)
5	Spindle	St. Steel	St. Steel	St. Steel (316)
6	Spring	St. Steel	St. Steel	St. Steel
7	Adjuster	Brass	St. Steel	St. Steel (316)
8	Wirelocking	St. Steel & Lead	St. Steel & Lead	St. Steel & Lead
9	Cap	Brass	St. Steel	St. Steel (316)

2

Compressed Air & Gas GP 329

GP 329 specifications

		Inlet	Outlet
Connections	BSP & NPT	3/8" to 3/4"	3/4"
		From	To
Pressure range	bar	53	370
	psi	768.50	5385

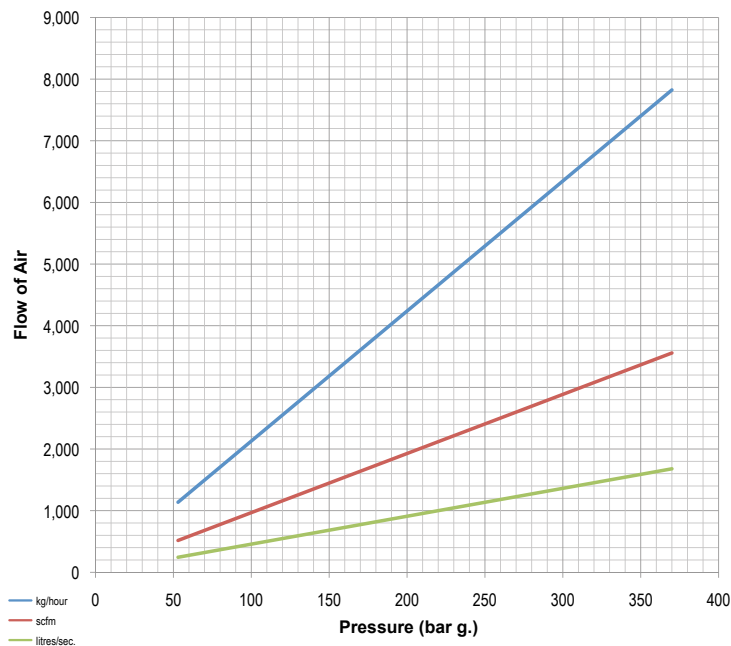
Temperature range -196°C to 70°C (subject to seal material)

Flow area 28.27mm² (6 mm inlet bore diameter)

Notes

- Maximum permissible built up back pressure is 10% of set pressure
- Relieving pressure is set pressure +10%
- Reseating pressure is set pressure -10%

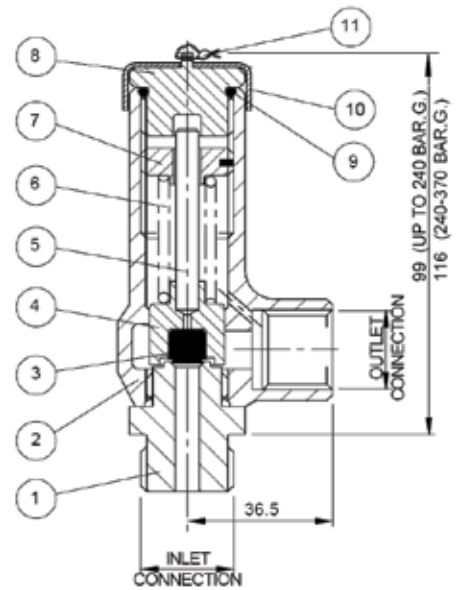
Discharge capacity's



Approvals



DN6



Materials of construction

	GP 32931	GP 32938
1 Seat	St. Steel	St. Steel
2 Body	Brass	St. Steel
3 Sealing Plug	PTFE	PTFE
4 Plunger	St. Steel	St. Steel
5 Spindle	St. Steel	St. Steel
6 Spring	St. Steel	St. Steel
7 Adjuster	Brass	St. Steel
8 Cap	Brass	St. Steel
9 'O' ring	Nitrile	Nitrile
10 Cover	Brass	St. Steel
11 Wire & Seal	St. Steel & Lead	St. Steel & Lead

Compressed Air & Gas GP 330

2

GP 330 specifications

		Inlet	Outlet
Connections	BSP & NPT	3/8" to 1/2"	1/2"
		From	To
Pressure range	bar	55	104
	psi	797.5	1508

Temperature range -40°C to 200°C (subject to seal material)

Flow area 40.02mm² (7.14 mm inlet bore diameter)

Notes

- Relieving pressure is set pressure +10%
- Reseating pressure is set pressure -15%

Discharge capacity's

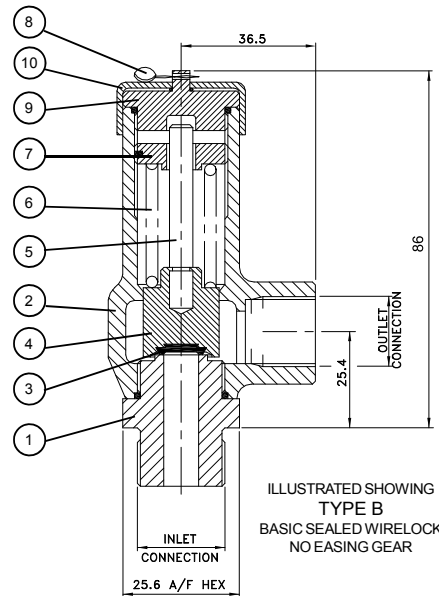
- kg/hour
- scfm
- litres/sec.

Pressure (bar g.)

Approvals



1/4"



Materials of construction

		GP 33020	GP 34020
1	Seat	St. Steel	St. Steel
2	Body	Brass	St. Steel
3	Seal	To Suit	To Suit
4	Plunger	St. Steel	St. Steel
5	Spindle	St. Steel	St. Steel
6	Spring	St. Steel	St. Steel
7	Adjuster	Brass	St. Steel
8	Wirelocking	St. Steel & Lead	St. Steel & Lead
9	Cap	Brass	St. Steel
10	Cover	St. Steel	St. Steel

2

Compressed Air & Gas GP 636

GP 63608 specifications

		Inlet	Outlet
Connections	BSP & NPT	1/4" to 1/2"	3/8"
		From	To
Pressure range	bar	0.30	13.20
	psi	4.35	191.40

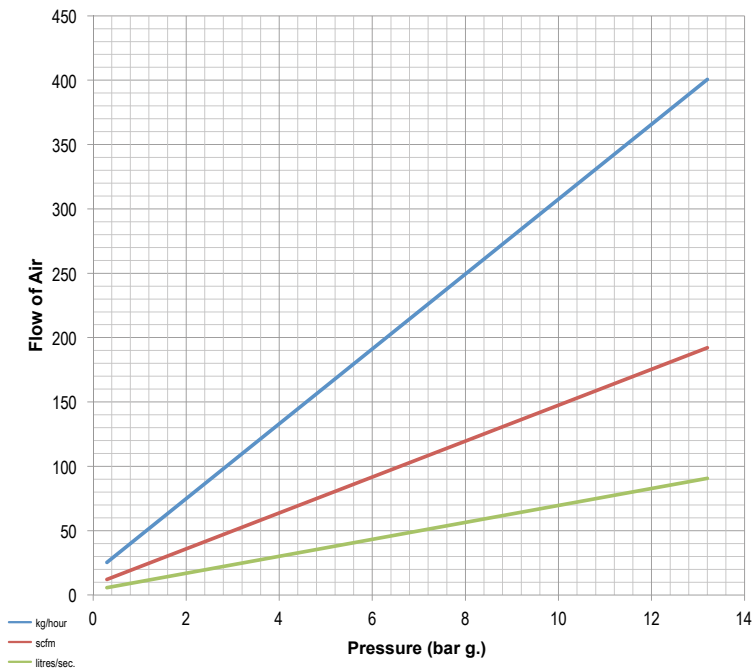
Temperature range -20°C to 180°C (subject to seal material)

Flow area 49.02mm² (7.90 mm inlet bore diameter)

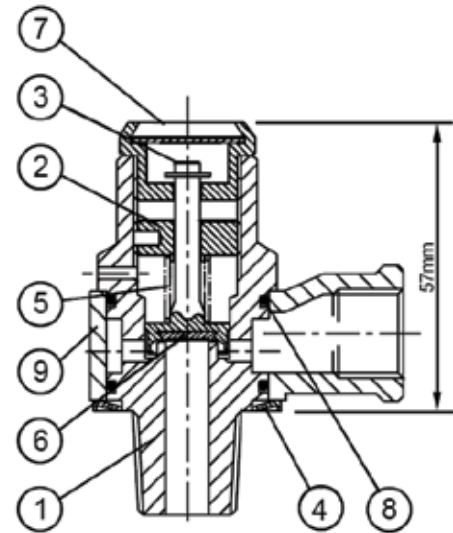
Notes

- Maximum permissible built up back pressure is 10% of set pressure
- Relieving pressure is set pressure +10% (0.1 bar g. below 1 bar g.)
- Reseating pressure is set pressure -10% (0.1 bar g. minimum)

Discharge capacity's



DN8



ILLUSTRATED SHOWING
TYPE R
CRIMPED ROTA-LIFT
EASING GEAR

Approvals



Materials of construction

1	Body	Brass CZ132
2	Adjuster	Brass CZ132
3	Plunger	Brass CZ132
4	Retaining Clip	Zinc Plated
5	Spring	St. Steel
6	Disc Seal	St. Steel
7	Relieving Screw	Brass
8	'O' ring	As Disc Seal
9	Pipe Collar	PPS 40% Glass Filled

Compressed Air & Gas GP 636, 646, 656

2

GP 63610, 64610, 65610 specifications

Connections	BSP & NPT	Inlet	Outlet
		From	To
		3/8" to 1/2"	3/4"
Pressure range	bar	0.48	55.20
	psi	6.96	800.40

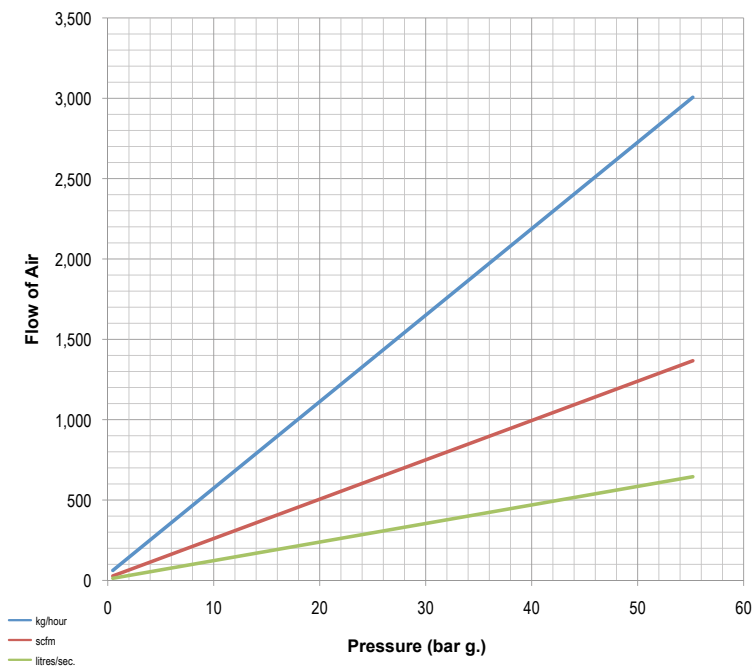
Temperature range -20°C to 200°C (subject to seal material)

Flow area 70.88mm² (9.50 mm inlet bore diameter)

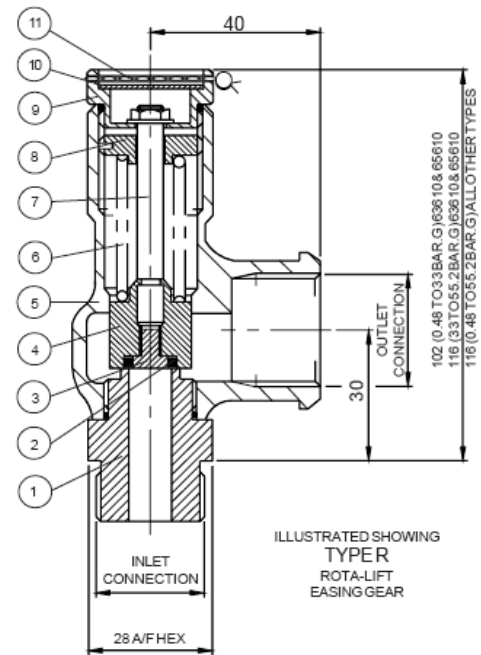
Notes

- Maximum permissible built up back pressure is 10% of set pressure
- Stable operation on flows down to 50% of valve related capacity
- Relieving pressure is set pressure +10% (0.3 bar g. below 1.55 bar g.)
- Reseating pressure is set pressure -10% (0.3 bar g. minimum)
- Below 1.55 bar g., PED certified only

Discharge capacity's



DN10

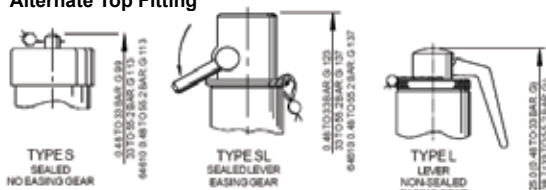


ILLUSTRATED SHOWING
TYPER
ROTA-LIFT
EASING GEAR

Approvals



Alternate Top Fitting



Materials of construction

	ASME PED/TÜV/ASME PED/TÜV	GP 63710 GP 63110 GP 63610	GP 64710 GP 64110 GP 64610	GP 65710 GP 65110 GP 65610
1 Inlet Seat		Brass CW614N	St. Steel 1.4401 (316)	St. Steel 1.4401 (316)
2 Seal		To Suit	To Suit	To Suit
3 Seal Retainer		Brass CW614N	St. Steel 1.4401 (316)	St. Steel 1.4401 (316)
4 Plunger		Brass CW602N	St. Steel 1.4401 (316)	Brass CW602N
5 Body		Bronze CC491K (SB-62 C83600)	St. Steel 1.4408 (316)	Bronze CC491K (SB-62 C83600)
6 Spring		St. Steel 1.4310 (302)	St. Steel 1.4310 (302)	St. Steel 1.4310 (302)
7 Spindle		St. Steel 1.4057 (431)	St. Steel 1.4057 (431)	St. Steel 1.4057 (431)
8 Adjuster		Brass CW614N	St. Steel 1.4401 (316)	Brass CW614N
9 Cap		Brass CW614N	St. Steel 1.4401 (316)	Brass CW614N
10 Nameplate		Aluminium Alloy	Aluminium Alloy	Aluminium Alloy
11 Wire & Seal		St. Steel & Lead	St. Steel & Lead	St. Steel & Lead

2

Compressed Air & Gas GP 636, 646, 656

GP 63613, 64613, 65613 specifications

Connections	BSP & NPT	Inlet	Outlet
		$\frac{3}{4}$ "	1"
Pressure range	bar psi	From	To
		0.32 4.64	49 710.50

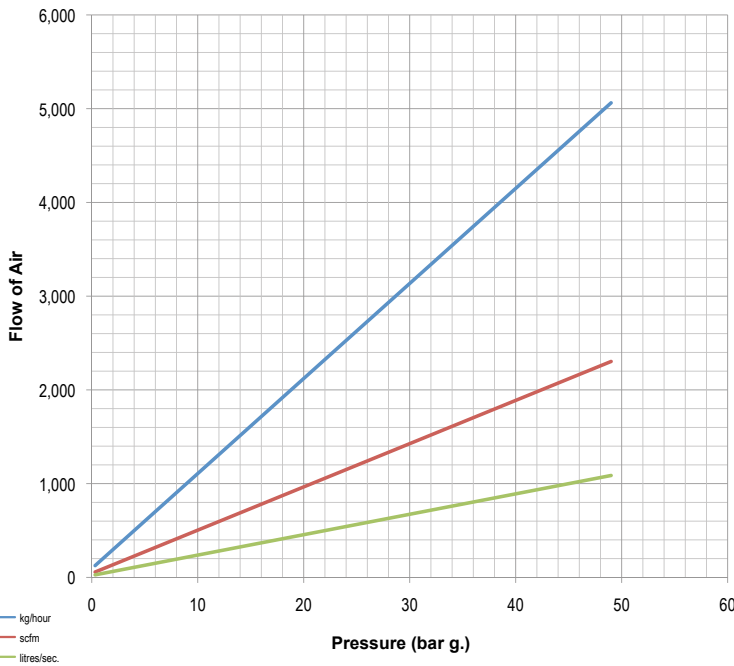
Temperature range -20°C to 200°C (subject to seal material)

Flow area 147.41mm² (13.70 mm inlet bore diameter)

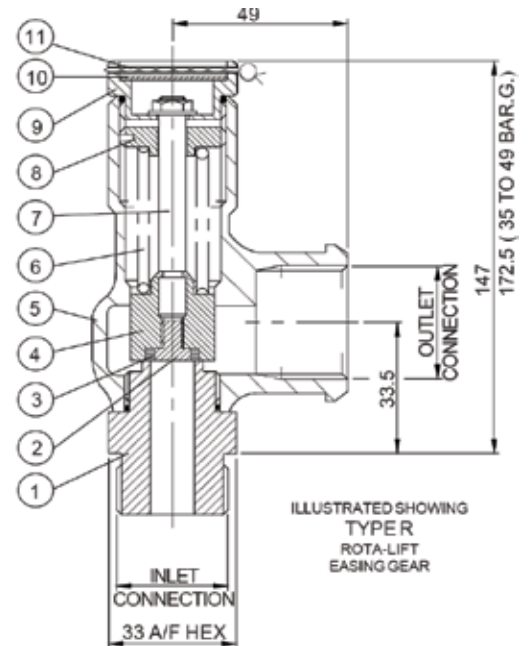
Notes

- Maximum permissible built up back pressure is 10% of set pressure
- Stable operation on flows down to 50% of valve related capacity
- Relieving pressure is set pressure +10% (0.3 bar g. below 1.40 bar g.)
- Reseating pressure is set pressure -10% (0.3 bar g. minimum)
- Below 1.40 bar g., PED certified only

Discharge capacity's



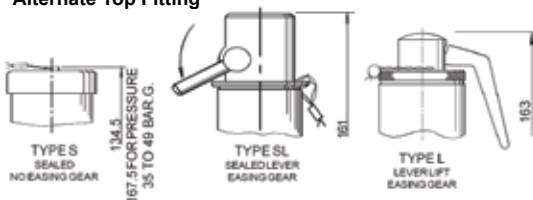
DN13



Approvals



Alternate Top Fitting



Materials of construction

	ASME GP 63713	GP 64713	GP 65713
PED/TÜV/ASME	GP 63113	GP 64113	GP 65113
PED/TÜV	GP 63613	GP 64613	GP 65613
1 Inlet Seat	Brass CW614N	St. Steel 1.4401 (316)	St. Steel 1.4401 (316)
2 Seal	To Suit	To Suit	To Suit
3 Seal Retainer	Brass CW614N	St. Steel 1.4401 (316)	St. Steel 1.4401 (316)
4 Plunger	Brass CW602N	St. Steel 1.4401 (316)	Brass CW602N
5 Body	Bronze CC491K (SB-62 C83600)	St. Steel 1.4408 (316)	Bronze CC491K (SB-62 C83600)
6 Spring	St. Steel 1.4310 (302)	St. Steel 1.4310 (302)	St. Steel 1.4310 (302)
7 Spindle	St. Steel 1.4057 (431)	St. Steel 1.4057 (431)	St. Steel 1.4057 (431)
8 Adjuster	Brass CW614N	St. Steel 1.4401 (316)	Brass CW614N
9 Cap	Brass CW614N	St. Steel 1.4401 (316)	Brass CW614N
10 Nameplate	Aluminium Alloy	Aluminium Alloy	Aluminium Alloy
11 Wire & Seal	St. Steel & Lead	St. Steel & Lead	St. Steel & Lead

Compressed Air & Gas GP 636, 646, 656

2

GP 63618, 64618, 65618 specifications

		Inlet	Outlet
Connections	BSP & NPT	1"	1 1/2"
		From	To
Pressure range	bar	1	35
	psi	14.50	507.50

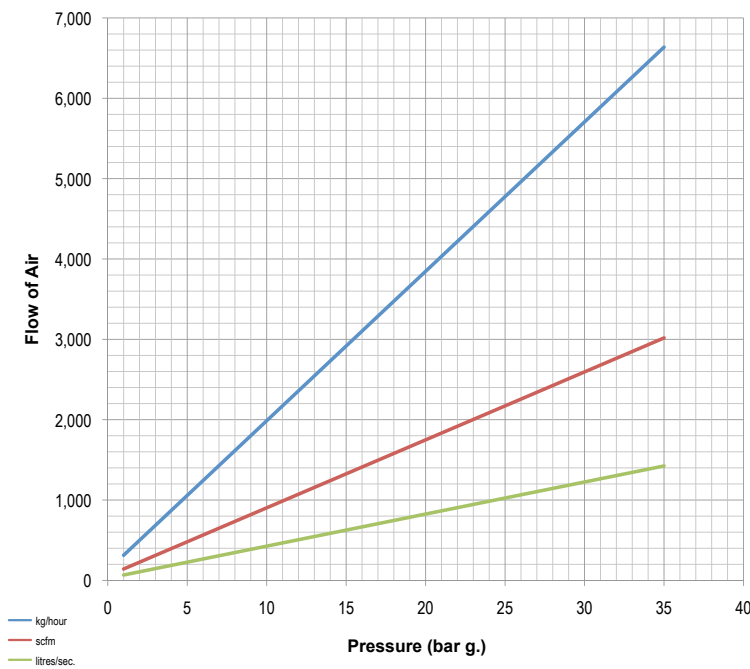
Temperature range -20°C to 200°C (subject to seal material)

Flow area 226.98mm² (17 mm inlet bore diameter)

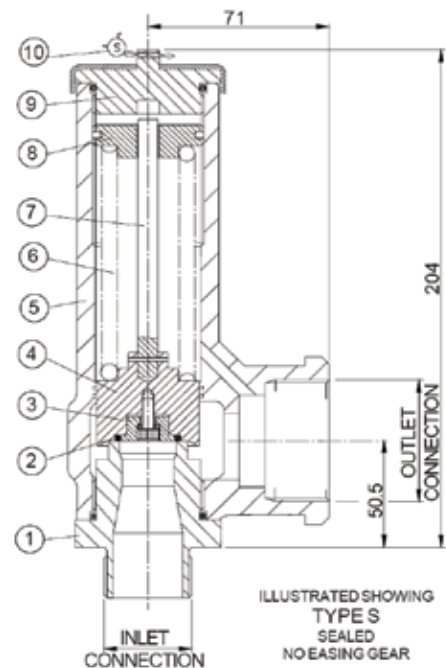
Notes

- Maximum permissible built up back pressure is 10% of set pressure
- Stable operation on flows down to 50% of valve related capacity
- Relieving pressure is set pressure +10%
- Reseating pressure is set pressure -10% (0.3 bar g. minimum)
- Below 2.40 bar g., PED certified only

Discharge capacity's



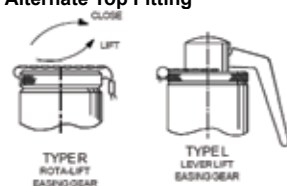
DN18



Approvals



Alternate Top Fitting



Materials of construction

	GP 63718	GP 64718	GP 65718
ASME	GP 63118	GP 64118	GP 65118
PED/TÜV/ASME	GP 63618	GP 64618	GP 65618
PED/TÜV			
1 Inlet Seat	Brass CW614N	St. Steel 1.4401 (316)	St. Steel 1.4401 (316)
2 Seal	To Suit	To Suit	To Suit
3 Seal Retainer	Brass CW614N	St. Steel 1.4401 (316)	St. Steel 1.4401 (316)
4 Plunger	Brass CW602N	St. Steel 1.4401 (316)	Brass CW602N
5 Body	Bronze CC491K (SB-62 C83600)	St. Steel 1.4408 (316)	Bronze CC491K (SB-62 C83600)
6 Spring	St. Steel 1.4310 (302)	St. Steel 1.4310 (302)	St. Steel 1.4310 (302)
7 Spindle	St. Steel 1.4057 (431)	St. Steel 1.4057 (431)	St. Steel 1.4057 (431)
8 Adjuster	Brass CW614N	St. Steel 1.4401 (316)	Brass CW614N
9 Cap	Brass CW614N	St. Steel 1.4401 (316)	Brass CW614N
10 Wire & Seal	St. Steel & Lead	St. Steel & Lead	St. Steel & Lead

2

Compressed Air & Gas GP 636, 646, 656

GP 63620, 64620, 65620 specifications

Connections	BSP & NPT	Inlet	Outlet
		1 1/4"	2"
Pressure range	bar psi	From	To
		3 43.50	35 507.50

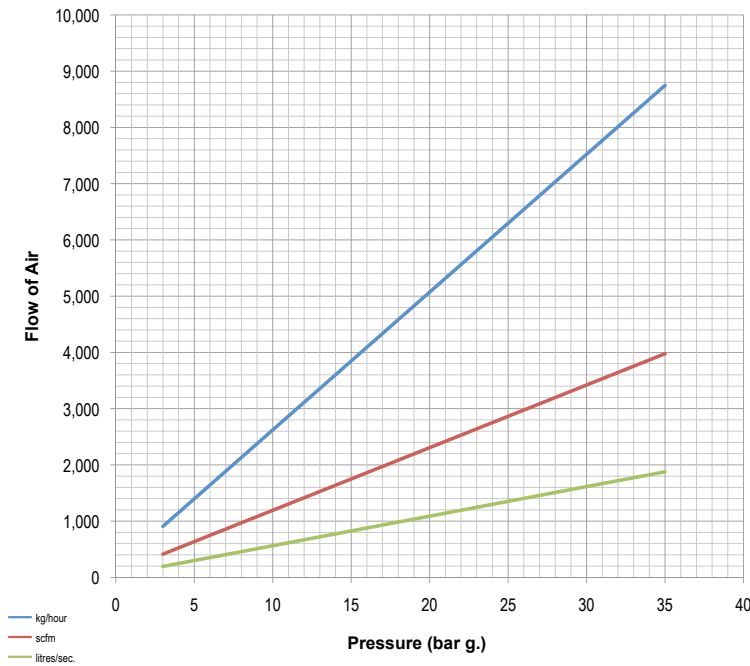
Temperature range -20°C to 200°C (subject to seal material)

Flow area 314.16mm² (20 mm inlet bore diameter)

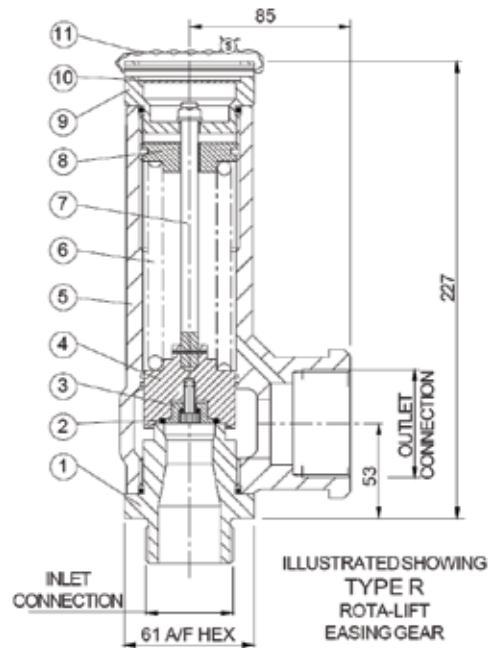
Notes

- Maximum permissible built up back pressure is 10% of set pressure
- Stable operation on flows down to 50% of valve related capacity
- Relieving pressure is set pressure +10%
- Reseating pressure is set pressure -10% (0.3 bar g. minimum)

Discharge capacity's



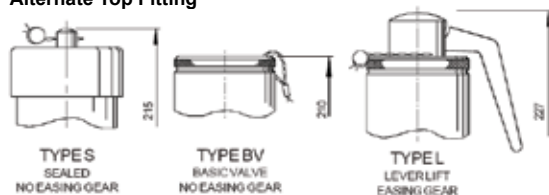
DN20



Approvals



Alternate Top Fitting



Materials of construction

	GP 63720	GP 64720	GP 65720
ASME	GP 63120	GP 64120	GP 65120
PED/TÜV/ASME	GP 63620	GP 64620	GP 65620
PED/TÜV			
1 Inlet Seat	Brass CW614N	St. Steel 1.4401 (316)	St. Steel 1.4401 (316)
2 'O' Ring	To Suit	To Suit	To Suit
3 Seal Retainer	Brass CW614N	St. Steel 1.4401 (316)	St. Steel 1.4401 (316)
4 Plunger	Brass CW602N	St. Steel 1.4401 (316)	Brass CW602N
5 Body	Bronze CC491K (SB-62 C83600)	St. Steel 1.4408 (316)	Bronze CC491K (SB-62 C83600)
6 Spring	St. Steel 1.4310 (302)	St. Steel 1.4310 (302)	St. Steel 1.4310 (302)
7 Spindle	St. Steel 1.4057 (431)	St. Steel 1.4057 (431)	St. Steel 1.4057 (431)
8 Adjuster	Brass CW614N	St. Steel 1.4401 (316)	Brass CW614N
9 Cap	Brass CW614N	St. Steel 1.4401 (316)	Brass CW614N
10 Nameplate	Aluminium	St. Steel	Aluminium
11 Wire & Seal	St. Steel & Lead	St. Steel & Lead	St. Steel & Lead

Compressed Air & Gas GP 636, 646, 656

2

GP 63625, 64625, 65625 specifications

Connections	BSP & NPT	Inlet	Outlet
		From	To
Pressure range	bar	5.65	81.93
	psi	30	435

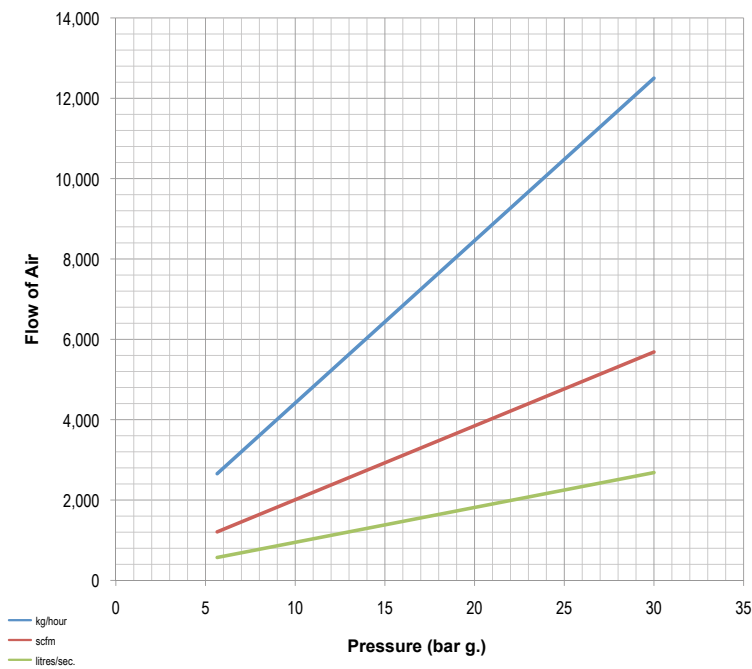
Temperature range -20°C to 200°C (subject to seal material)

Flow area 490.87mm² (25 mm inlet bore diameter)

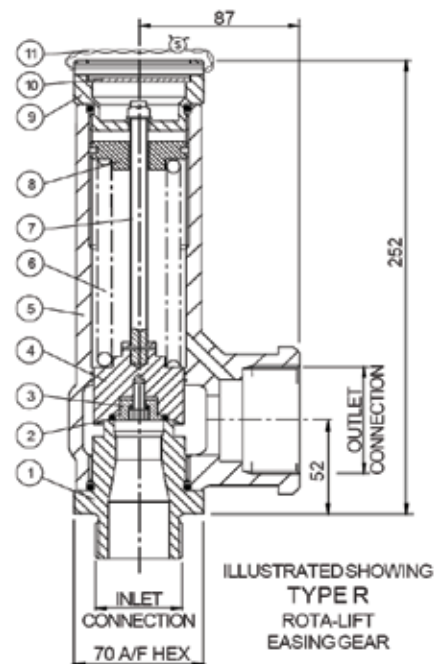
Notes

- Maximum permissible built up back pressure is 10% of set pressure
- Stable operation on flows down to 50% of valve related capacity
- Relieving pressure is set pressure +10%
- Reseating pressure is set pressure -10%

Discharge capacity's



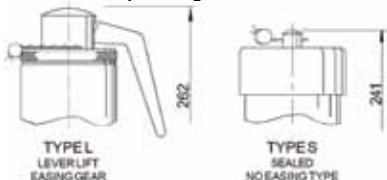
DN25



Approvals



Alternate Top Fitting



Materials of construction

	ASME GP 63725	GP 64725	GP 65725
PED/TÜV/ASME	GP 63125	GP 64125	GP 65125
PED/TÜV	GP 63625	GP 64625	GP 65625
1 Inlet Seat	Brass CW614N	St. Steel 1.4401 (316)	St. Steel 1.4401 (316)
2 'O' Ring	To Suit	To Suit	To Suit
3 Seal Retainer	Brass CW614N	St. Steel 1.4401 (316)	St. Steel 1.4401 (316)
4 Plunger	Brass CW602N	St. Steel 1.4401 (316)	Brass CW602N
5 Body	Bronze CC491K (SB-62 C83600)	St. Steel 1.4408 (316)	Bronze CC491K (SB-62 C83600)
6 Spring	St. Steel 1.4310 (302)	St. Steel 1.4310 (302)	St. Steel 1.4310 (302)
7 Spindle	St. Steel 1.4057 (431)	St. Steel 1.4057 (431)	St. Steel 1.4057 (431)
8 Adjuster	Brass CW614N	St. Steel 1.4401 (316)	Brass CW614N
9 Cap	Brass CW614N	St. Steel 1.4401 (316)	Brass CW614N
10 Nameplate	Aluminium/ St. Steel	St. Steel	Aluminium/ St. Steel
11 Wire & Seal	St. Steel & Lead	St. Steel & Lead	St. Steel & Lead

2

Compressed Air & Gas GP 646 (Clean Gas Service)

GP 64610 (clean gas service) specifications

		Inlet	Outlet
Connections	BSP & NPT	1/2" to 1" TRI-CLAMP	2"
		From	To
Pressure range	bar	0.48	55.20
	psi	6.96	800.40

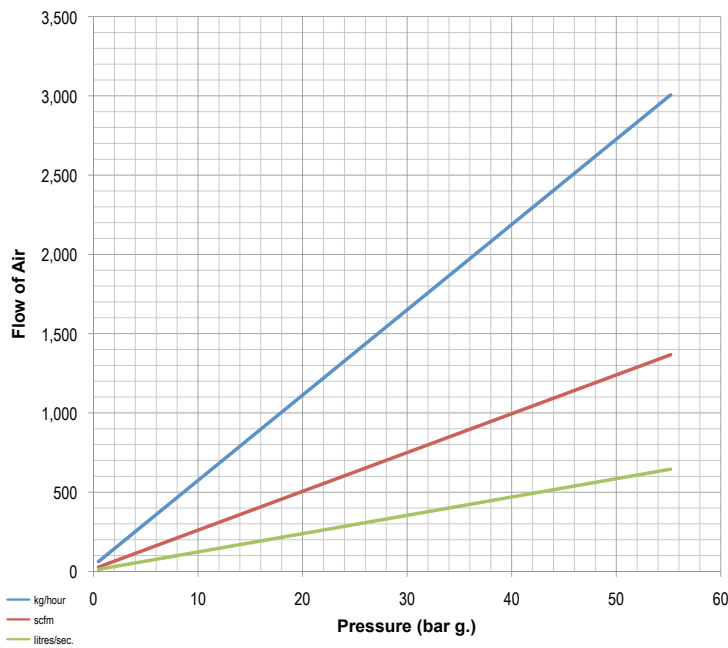
Temperature range -40°C to 190°C (subject to seal material)

Flow area 70.88mm² (9.50 mm inlet bore diameter)

Notes

- Maximum permissible built up back pressure is 10% of set pressure
- Stable operation on flows down to 50% of valve rated capacity
- Relieving pressure is set pressure +10% (0.3 bar g. below 1.55 bar g.)
- Reseating pressure is set pressure -10% (0.3 bar g. minimum)
- Below 1.55 bar g., PED certified only
- Tri-Clamp compatible generally in accordance with ASME BPE 2005 & BS 4825-3.

Discharge capacity's



Approvals

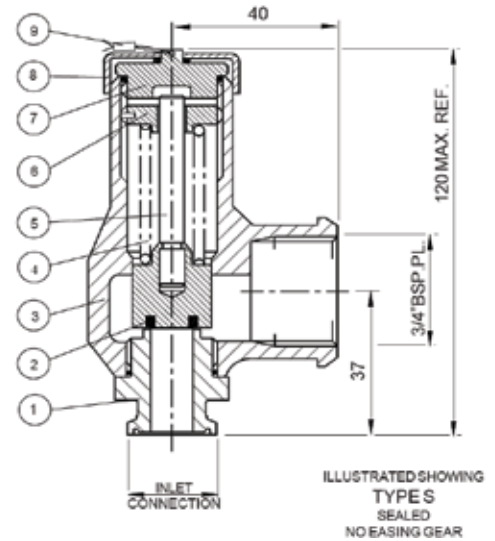


Alternate Top Fitting



DN10

Sealing
Perfluorelastomer



Materials of construction

	ASME	GP 64710
	PED/TÜV/ASME	GP 64110
	PED/TÜV	GP 64610
1	Inlet Seat	St. Steel 1.4404 (316L)
2	Plunger	St. Steel 1.4404 (316L)
3	Body	St. Steel 1.4404 (316)
4	Spring	St. Steel 1.4404 (302)
5	Spindle	St. Steel 1.4404 (431)
6	Adjuster	St. Steel 1.4404 (316)
7	Cap	St. Steel 1.4404 (316)
8	Cover	St. Steel
9	Wire & Seal	St. Steel & Lead

Compressed Air & Gas GP 646 (Clean Gas Service)

2

GP 64613 (clean gas service) specifications

		Inlet	Outlet
Connections	BSP & NPT	3/4" to 1" Tri-Clamp®	2"
		From	To
Pressure range	bar	0.32	49.00
	psi	4.64	710.50

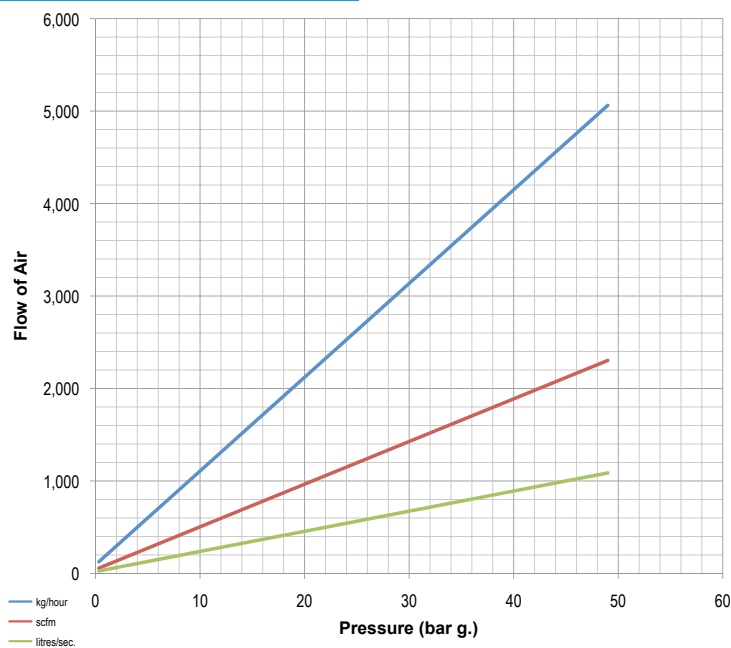
Temperature range -40°C to 190°C (subject to seal material)

Flow area 147.41mm² (13.70 mm inlet bore diameter)

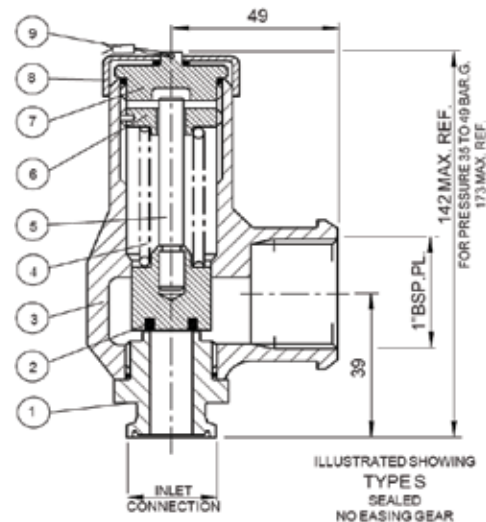
Notes

- Maximum permissible built up back pressure is 10% of set pressure
- Stable operation on flows down to 50% of valve rated capacity
- Relieving pressure is set pressure +10% (0.3 bar g. below 1.55 bar g.)
- Reseating pressure is set pressure -10% (0.3 bar g. minimum)
- Below 1.40 bar g., PED certified only
- Tri-Clamp® compatible generally in accordance with ASME BPE 2005 & BS 4825-3.

Discharge capacity's



DN13



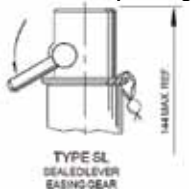
Materials of construction

	ASME	GP 64713
	PED/TÜV/ASME	GP 64113
	PED/TÜV	GP 64613
1	Inlet Seat	St. Steel 1.4404 (316L)
2	Plunger	St. Steel 1.4404 (316L)
3	Body	St. Steel 1.4404 (316)
4	Spring	St. Steel 1.4404 (302)
5	Spindle	St. Steel 1.4404 (431)
6	Adjuster	St. Steel 1.4404 (316)
7	Cap	St. Steel 1.4404 (316)
8	Cover	St. Steel
9	Wire & Seal	St. Steel & Lead

Approvals



Alternate Top Fitting



2

Compressed Air & Gas GP 936, 946

GP 94610 (Metal Seal) specifications

Connections	BSP & NPT	Inlet	Outlet
		From	To
		1/2" to 3/4"	1"
Pressure range	bar	0.30	28
	psi	4.35	406

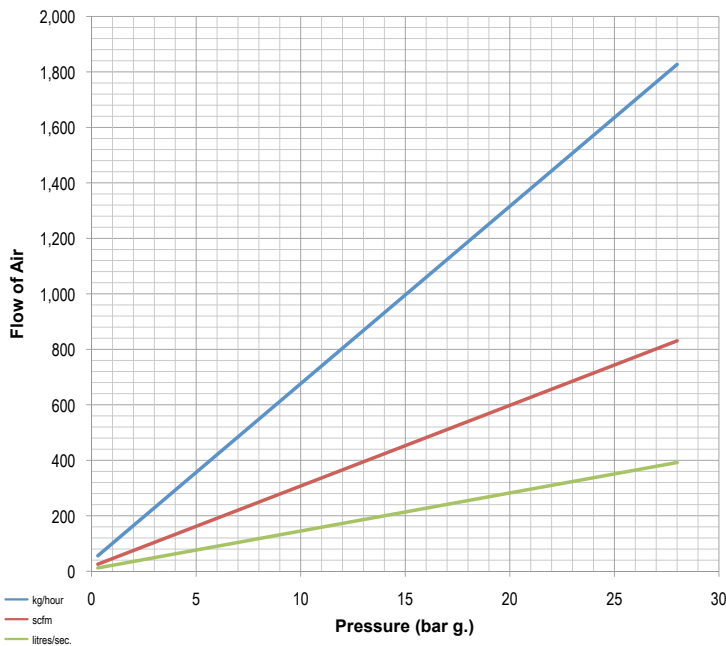
Temperature range -196°C to 250°C (subject to seal material)

Flow area 78.54mm² (10.00 mm inlet bore diameter)

Notes

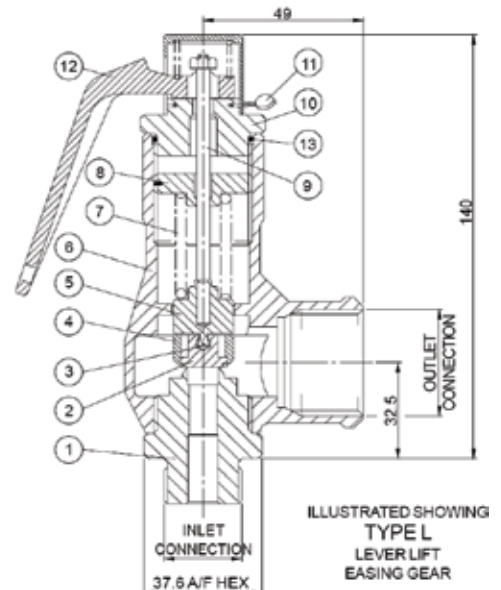
- Maximum permissible built up back pressure is 10% of set pressure
- Stable operation on flows down to 50% of valve rated capacity
- Relieving pressure is set pressure +10% (0.1 bar g. below 1.3 bar g.)
- Reseating pressure is set pressure -10% (0.3 bar g. below 3.0 bar g.)

Discharge capacity's



Sealing
Metal-to-Metal

DN10



Approvals



Alternate Top Fittings



Materials of construction

	GP 93610	GP 94610
1 Inlet Seat	Brass	St. Steel
2 Disc	St. Steel 1.4401 (316)	St. Steel 4408
3 Ball	St. Steel	St. Steel
4 Disc Holder	St. Steel	St. Steel
5 Plunger	St. Steel	St. Steel
6 Body	Brass	St. Steel
7 Spring	St. Steel	St. Steel
8 Adjuster	Brass	St. Steel
9 Spindle	St. Steel	St. Steel
10 Cap	Brass	St. Steel
11 Wire & Seal	St. Steel & Lead	St. Steel & Lead
12 Lever	Brass	St. Steel
13 'O' ring	To Suit	To Suit

Compressed Air & Gas GP 936, 946

2

GP 94615 (Metal Seal) specifications

		Inlet	Outlet
Connections	BSP & NPT	¼ to 1½"	1½"
		From	To
Pressure range	bar	0.30	28
	psi	4.35	406

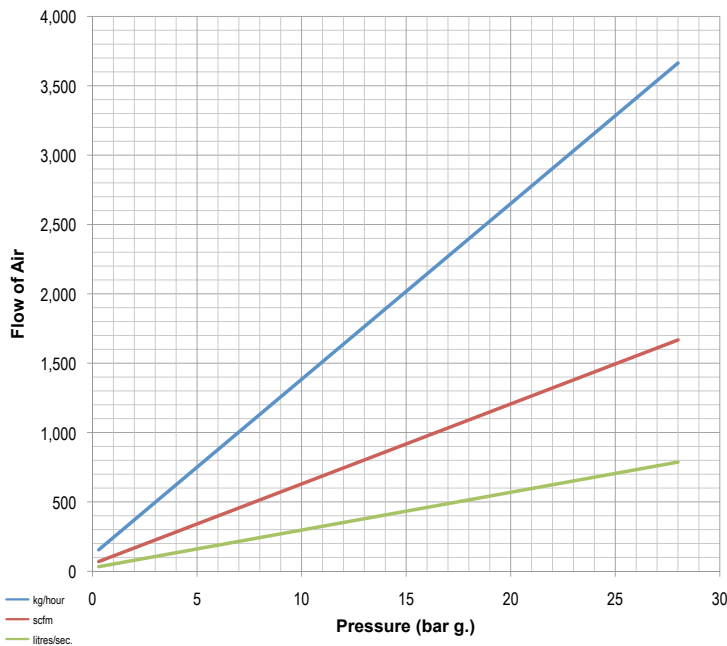
Temperature range -196°C to 250°C (subject to seal material)

Flow area 176.71mm² (15.00 mm inlet bore diameter)

Notes

- Maximum permissible built up back pressure is 10% of set pressure
- Stable operation on flows down to 50% of valve rated capacity
- Relieving pressure is set pressure +10% (0.1 bar g. below 1.3 bar g.)
- Reseating pressure is set pressure -10% (0.3 bar g. below 3.0 bar g.)

Discharge capacity's



Approvals

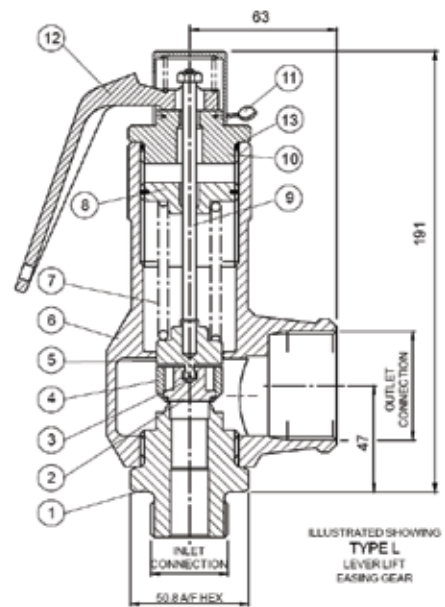


Alternate Top Fittings



Sealing
Metal-to-Metal

DN15



Materials of construction

	GP 93615	GP 94615
1 Inlet Seat	Brass	St. Steel
2 Disc	St. Steel 1.4401 (316)	St. Steel 4408
3 Ball	St. Steel	St. Steel
4 Disc Holder	St. Steel	St. Steel
5 Plunger	St. Steel	St. Steel
6 Body	Brass	St. Steel
7 Spring	St. Steel	St. Steel
8 Adjuster	Brass	St. Steel
9 Spindle	St. Steel	St. Steel
10 Cap	Brass	St. Steel
11 Wire & Seal	St. Steel & Lead	St. Steel & Lead
12 Lever	Brass	St. Steel
13 'O' ring	To Suit	To Suit

2

Compressed Air & Gas GP 936, 946

GP 94620 (Metal Seal) specifications

Connections	BSP & NPT	Inlet	Outlet
		1" to 1½"	2"
Pressure range	bar	0.30	28
	psi	4.35	406

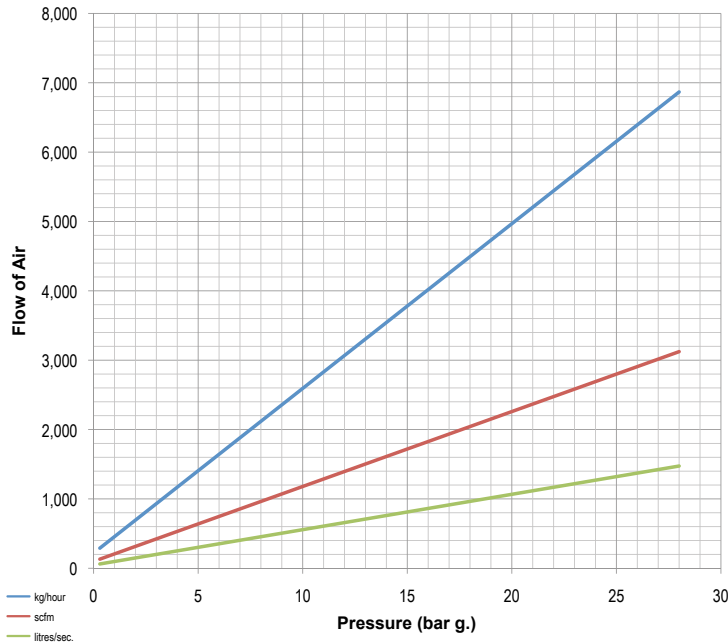
Temperature range -196°C to 250°C (subject to seal material)

Flow area 314.16mm² (20.00 mm inlet bore diameter)

Notes

- Maximum permissible built up back pressure is 10% of set pressure
- Stable operation on flows down to 50% of valve rated capacity
- Relieving pressure is set pressure +10% (0.1 bar g. below 1.3 bar g.)
- Reseating pressure is set pressure -10% (0.3 bar g. below 3.0 bar g.)

Discharge capacity's



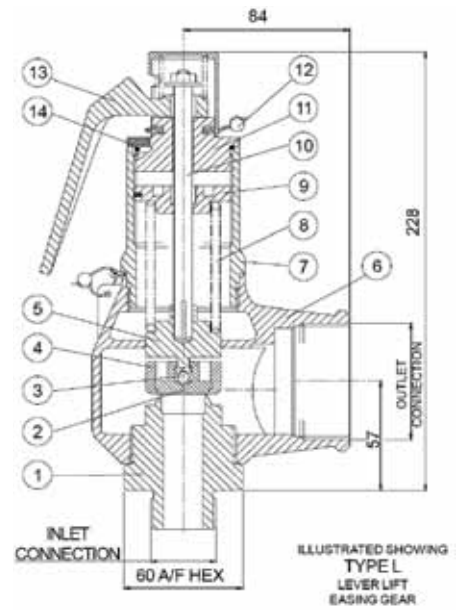
Approvals



Alternate Top Fittings



DN20



Materials of construction

	GP 93620	GP 94620
1 Inlet Seat	Brass	St. Steel
2 Disc	St. Steel 1.4401 (316)	St. Steel 440B
3 Ball	St. Steel	St. Steel
4 Disc Holder	St. Steel	St. Steel
5 Plunger	St. Steel	St. Steel
6 Body	Brass	St. Steel
7 Spring Housing	Brass	St. Steel
8 Spring	St. Steel	St. Steel
9 Adjuster	Brass	St. Steel
10 Spindle	St. Steel	St. Steel
11 Cap	Brass	St. Steel
12 Wire & Seal	St. Steel & Lead	St. Steel & Lead
13 Lever	Brass	St. Steel
14 'O' Ring	To Suit	To Suit

Compressed Air & Gas GP 936, 946

2

GP 94625 (Metal Seal) specifications

		Inlet	Outlet
Connections	BSP & NPT	1¼" to 2"	2"
		From	To
Pressure range	bar	0.30	20
	psi	4.35	290

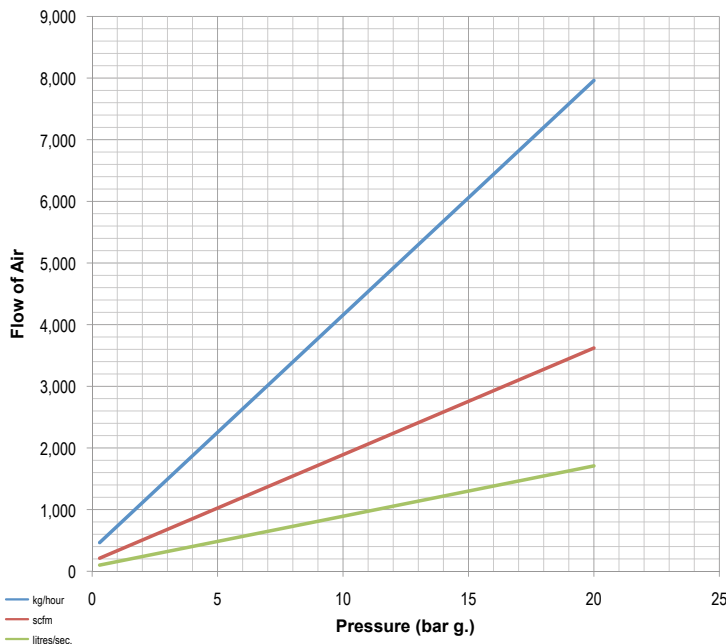
Temperature range -196°C to 250°C (subject to seal material)

Flow area 490.87mm² (25.00 mm inlet bore diameter)

Notes

- Maximum permissible built up back pressure is 10% of set pressure
- Stable operation on flows down to 50% of valve rated capacity
- Relieving pressure is set pressure +10% (0.1 bar g. below 1.3 bar g.)
- Reseating pressure is set pressure -10% (0.3 bar g. below 3.0 bar g.)

Discharge capacity's



Approvals

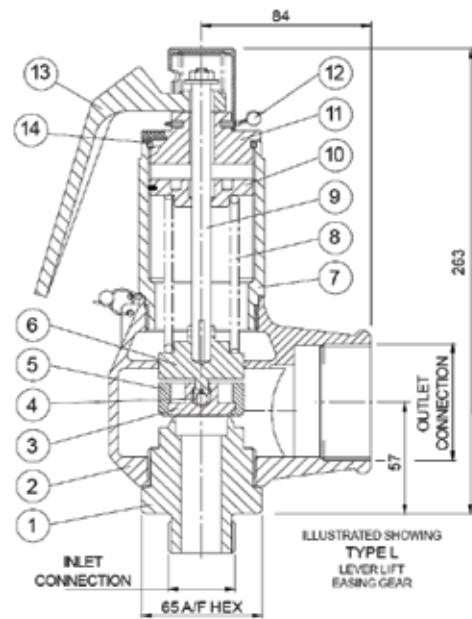


Alternate Top Fittings



Sealing
Metal-to-Metal

DN25



Materials of construction

	GP 93625	GP 94625
1 Inlet Seat	Brass	St. Steel
2 Body	St. Steel	St. Steel
3 Disc	St. Steel 1.4401 (316)	St. Steel 440B
4 Ball	St. Steel	St. Steel
5 Disc Holder	St. Steel	St. Steel
6 Plunger	St. Steel	St. Steel
7 Spring Housing	Brass	St. Steel
8 Spring	St. Steel	St. Steel
9 Spindle	St. Steel	St. Steel
10 Adjuster	Brass	St. Steel
11 Cap	Brass	St. Steel
12 Wire & Seal	St. Steel & Lead	St. Steel & Lead
13 Lever	Brass	St. Steel
14 'O' Ring	To Suit	To Suit

2

Compressed Air & Gas GP 359

GP 359 specifications

Connections	BSP & NPT	Inlet	Outlet
		3/8" x 1/2"	1/2" x 1/2"
Pressure range	bar	35	500
	psi	507.50	7250

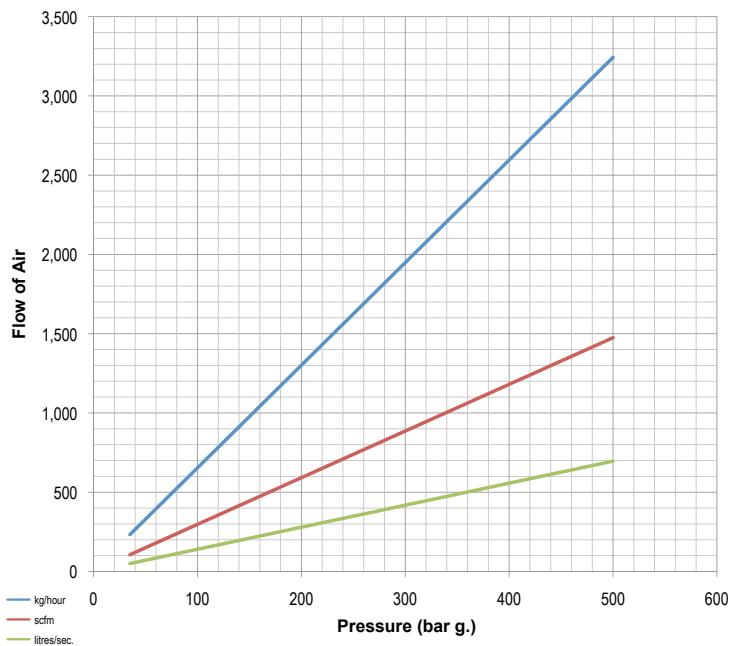
Temperature range 0°C to 200°C (subject to seal material)

Flow area 16.62mm² (4.60 mm inlet bore diameter)

Notes

- Maximum permissible built up back pressure is 10% of set pressure
- Relieving pressure is set pressure +10%
- Reseating pressure is set pressure -10%

Discharge capacity's

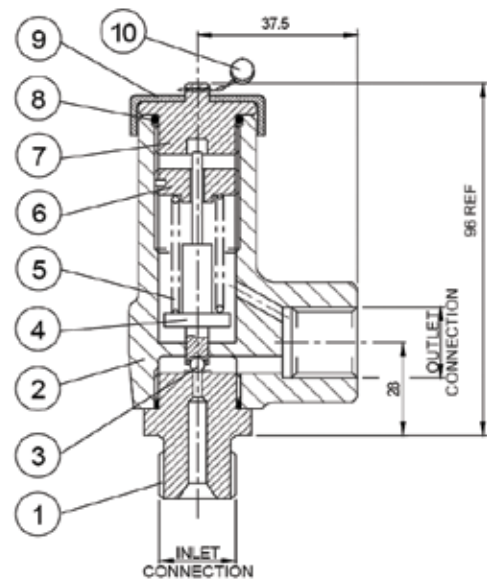


Approvals



Sealing
Metal Ball

DN5



Materials of construction

1 Seat	St. Steel	6 Adjuster	St. Steel
2 Body	St. Steel	7 Cap	St. Steel
3 Ball	St. Steel	8 'O' Ring	Viton
4 Plunger	St. Steel	9 Cover	St. Steel
5 Spring	St. Steel	10 Wire & Seal	St. Steel & Lead

The Seetru 'MPCV' Range

The Seetru Minimum Pressure Check Valves are control valves typically suitable for application on compressors. Minimum pressure check valve are spring loaded pressure control valves with an in-built check (non-return) valve that maintains pressure required for the lubrication of oil-injected rotary compressors. Installed directly downstream from the air-oil separator.

MPCV 419 specifications (Minimum Pressure Check Valve)

		Inlet	Outlet
Connections	BSP & NPT	1 ¼" to 3" flanged	1 ¼" to 3" flanged
		From	To
Pressure range	bar	2.28	13.8
	psi	33	200.15

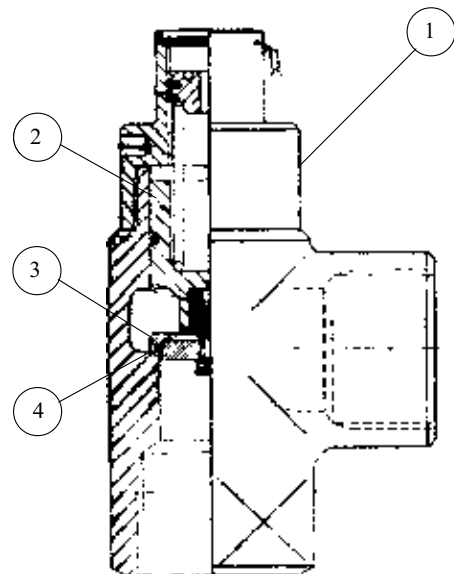
Flow up to 2548.5m³/hr

Approvals



Materials of construction

1	Body	Cast Iron or Aluminium
2	Piston	Aluminium Alloy
3	Plunger	Aluminium Alloy
4	Seal	Viton



4

Compressed Air & Gas 'SF' 'SG' Window Sight Glass

The Seetru 'SF' 'SG' Window Sight Glass

Seetru circular window sight glasses are compact low cost assemblies that provide reliable level indication and positive indication when liquid is present. These screw-in plugs are fitted with high quality glass. They are suitable for a wide variety of liquids including water, oils and lubricants. They operate at temperatures up to 180°C and pressures up to 24 bar.

Seetru Circular Window Sight Glasses are, for example, widely used in compressor crank cases and other machine housings and have proved to be highly reliable and economic.

Seetru manufacture a wide range of circular window sight glasses with a variety of designs.

'SF' 'SG' Sight Glass specifications

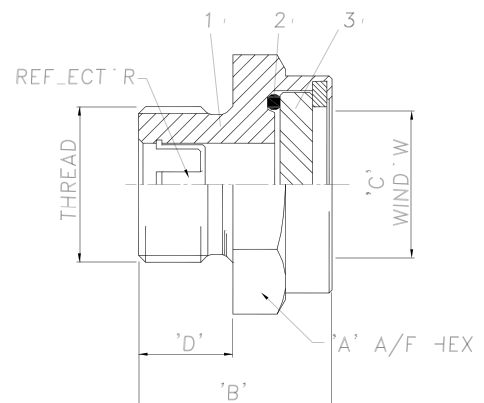
		From	To
Connections	BSP & NPT	1/2"	2"
Maximum Pressure	bar		24
	psi		348
Maximum Temperature	180 °C		

Series 'SF' 'SG'- Flat Glass Window

Connections BSP	Dimensions (mm)				Standard Working Pressure Bar
	A	B	C	D	
1/2"	33	30	19	14	16
3/4"	33	31	19	16	16
1"	38.1	34.5	21	19	16
1 1/4"	52	37	31	22	24
1 1/2"	52	36.5	31	22	24
2"	65	40	45	27	14.5

Features:

- Positive indication when liquid present.
- Reflector provides visual enhancement of coloured liquids (SG model).
- Cushioned against shock, the glass window is fully sealed.



Materials of construction

1	Body	Mild Steel Zin Plated Stainless Steel (316)
2	Seal	Nitrile seals up to 180°C Viton seals up to 180°C Other Elastomer seals upon request
3	Viewing Window	Annealed Borosilicate Heat Resisting Glass, Toughened Soda Lime Glass.

Compressed Air & Gas G27 Mini Gauge

4

The Seetru 'G27' Mini Gauge

The Seetru Mini gauge is a simple but effective tubular liquid level gauge. It has valveless end connections that screw directly into the tank and is commonly used for small water tanks and compressor lube oil tanks, but can be used for a variety of other fluids as it can be supplied with a choice of end unit, sight tube and seal materials.

G27 Mini Gauge specifications

Connections G1/4" BSP, M12 or 1/2" - 20 UNF threads

Lengths Minimum: **100mm**
Maximum: **1000mm**

Valve types Valveless

Maximum Temperature 180°C¹

Maximum Pressure 19 bar²

¹ Maximum temperature is dependant of the sight tube and seal materials selected.

² Maximum allowable operating pressure is dependent upon operating temperature and sight tube material, contact Seetru for full information.

Ease of viewing

The level of colourless liquids is indicated by magnification of a coloured strip on the sight tube.

Open circuit design

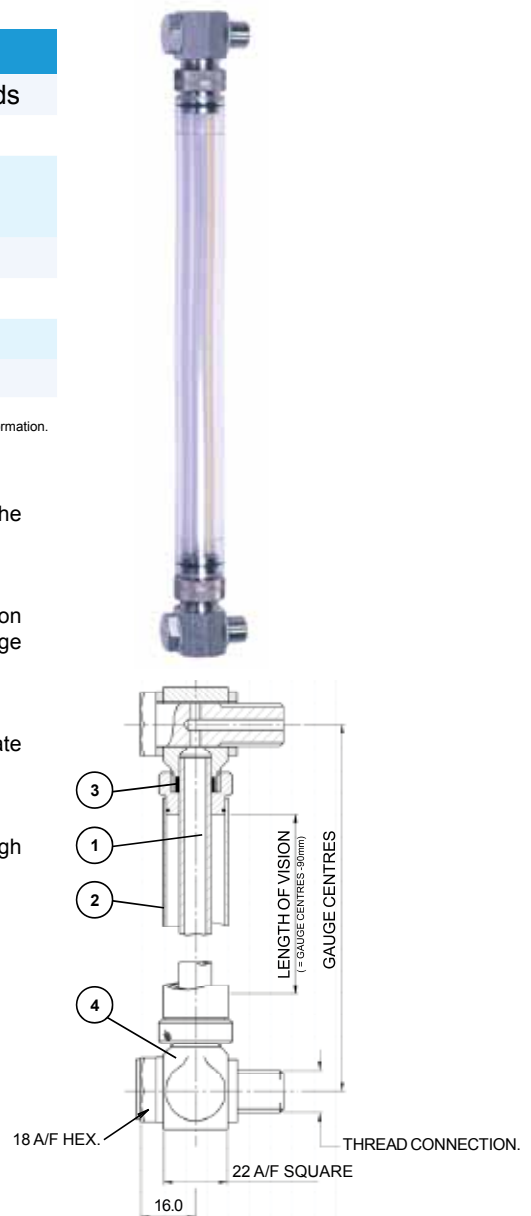
An open circuit gauge is also available, this is where only the bottom connection penetrates the tank wall. This is only allowable when it is possible for the gauge column to extend above the maximum filling level of the tank.

Graduation

Where a measure of the precise storage volume is required an engraved scale plate can be provided.

High pressure version

The maximum working pressure for the standard gauge is 19 bar., however a high pressure version suitable for up to 30 bar. is available upon request.



Materials of construction

1	Sight tube	Borosilicate Glass or Polycarbonate plastic
2	Guard tube	Polycarbonate plastic (or St. Steel on request)
3	Seal	Elastomer
4	End Unit	Nickel plated brass or stainless steel

Other Products & Services from the Seetru Limited Organisation



The contents of this leaflet do not constitute an offer. SEETRU LIMITED reserve the right while maintaining the essential characteristics of the equipment and services described and illustrated to amend specification without notice.

Seetru Limited
Albion Dockside Works
Bristol. BS1 6UT