

# MANISCOPIC

**MLT 523**  
Turbo


- Maximum lifting height : 4.97 m
- Capacity : 2300 kg
- Maximum forward reach : 2.82 m
- Hydrostatic transmission





MLT 523 T with a CBA 1500

 **MANITOU**


# MLT 523 T


 **Lifting capacity** .....2300 kg  
at 500 mm from forks heels.  
Tipping load  
at maximum reach : .....1450 kg  
Tear out force with bucket  
to ISO 8313.....4780 daN


 **Lifting height** : .....4.97 m  
**Times** : unladen / loaded (in s)  
Lifting .....6/6.7  
Lowering .....4/4  
Boom extension.....4.5/4.6  
Boom retraction .....3/2.4  
Time unladen (in s)  
Crowd .....2.70  
Dump.....2.30


 **Tyres**  
12.5 - 80 - 18 SGI  
Option : 10.5 - 18 TG 42 10 PR

 **Forks** (mm)  
Length.....1200  
Width.....125


 **Oil bath multidisc brakes on front axle**

 **Perkins engine**  
Type .....1103C-33 Turbo 3/3300 cm<sup>3</sup>  
Power (ISO/TR 14396) .....75 HP/55 kw  
Maximum torque.....291 Nm at 1400 tr/mn  
Direct injection  
Water cooling

 **Transmission** .....hydrostatic  
Electro - hydraulic reversing shift  
One speed forward and reverse

 **Hydraulics**  
Lifting/tilting pump :  
gear type .....90 l./mn - 260 bars  
Flow divider with priority to steering

 **Capacities**  
Cooling system.....14.5 l.  
Transmission oil .....102.5 l.  
Engine oil .....6.2 l.  
Fuel tank .....104 l.

 **Weight unladen** (with forks) .....5182 kg  
**Overall width** .....1.80 m  
**Overall height** .....1.98\* or 2.01 m  
**Turning radius** (outside wheels) .....3.08 m  
**Overall length** .....4.20 m  
**Ground clearance** .....0.30 m  
**Drawbar pull**.....3400 daN

\* Tyres : 10.5 - 18

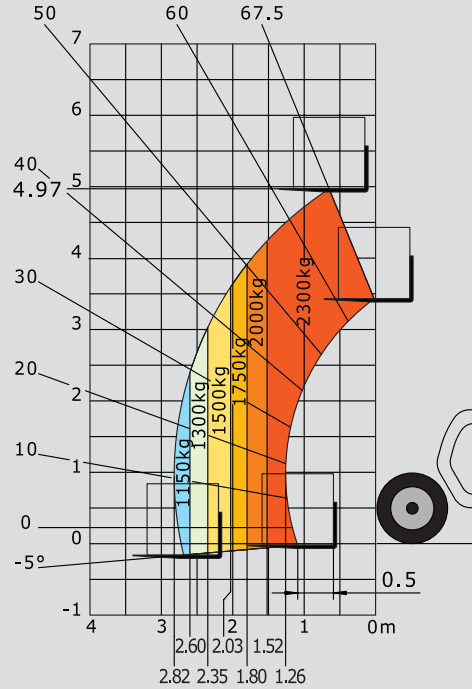
This publication in no way constitutes an offer and the company reserves the right to alter specification without prior notice.  
Model illustrated may have optional equipment which is available at additional cost.



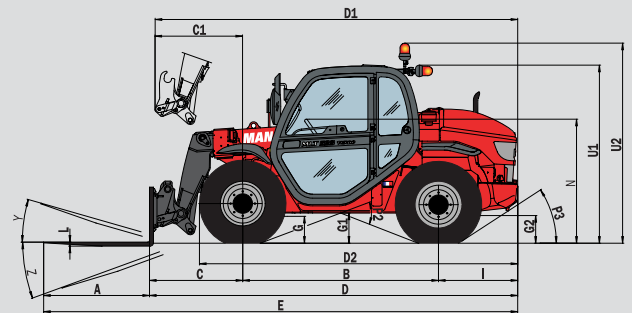
**MANITOU BF SA**  
B.P. 249 - 44158 Ancenis Cedex - France  
Tél. : 33 2 40 09 10 11 / Export Department Fax : 33 2 40 09 10 97  
www.manitou.com

700042EN - BE 107 Ind C

## Reach at maximum height : 0,64 m



Under EN 1459 annexe B



MLT 523 Turbo	
A	1200
B	2230
C	1070
C1	1005
D	4205
D1	4140
D2	3626
E	5405
F	1500
F1	1500
G	305
G1	355
G2	325
I	905
J	865
K	1020
L	45
N	1410
O	125
P2	39°
P3	31°
R	2870
S	6470
T	3130
U1	2010
U2	2300
V	4125
V1	995
V2	3085
W	1810
Y	11.8°
Z	120.4°

(mm)

