

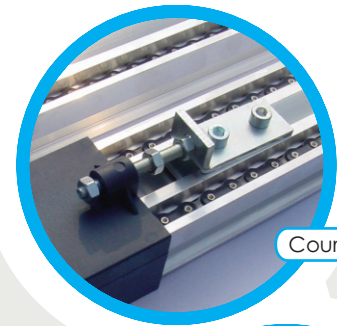
# CORONA

ELECTROMECHANICAL OPERATOR FOR GARAGE DOORS  
MAXIMUM DOOR WEIGHT 110 KGS



## Safe, silent and secure!

- "Low voltage" ceiling mounted operator, strong and easy to install. Available in two versions: 60 kgs and 110 kgs.
- Irreversible motor secures the door closed without the need for additional locking systems.
- Slow down in closing and opening for smoothness of action.
- Extremely quiet due to the aluminium chain guide and 24V motor which also allows control panel current sensing for high levels of safety.
- Adjustable speed for large or heavy doors. External batteries may be added to control panel in case of power failure. Easily adjustable limit switches for quick installation.
- Internal manual release with pull cord in case of power failure. Optional extra - Cable to link the garage door handle.



Courtesy light

Aluminium guide  
Chain tensioner



Courtesy light cover



Upper View

## Smooth , powerful and sensitive!

- Two safety systems as standard, current sensing and self learning motor rotation. Safety edge and Photocell connections available.
- Single or three piece track available. Adjustable chain tensioner for continuous reliable operation. Built on 433 Mhz radio receiver (rolling code or Dip).
- Two channel radio control transmitter supplied as standard. Compatible radio receivers available for most types of automation equipment.
- Automatic logic control system available for use on multi - user sites with adjustable pause time trimmer and emergency stop button input.
- Conversion arm system for canopy doors available.

**"Where quality matters, ask for  
SEA - the Engineers' choice!"**

### SEA (UK) Limited

#### Midlands Head Office:-

Unit 2 Ardath Road, Kings Norton,  
Birmingham, West Midlands, B38 9PJ  
Tel: 0121 433 3348 / Fax: 0121 433 5695

#### London Trade Counter:-

1-4 Grange Mews,  
Rear of 28 The Grangeway,  
LONDON N21 2HG  
Tel: 020 8360 8022 / Fax: 020 8364 2516

[sales@seauktd.co.uk](mailto:sales@seauktd.co.uk) / [www.seauktd.co.uk](http://www.seauktd.co.uk)

# CORONA

## Specifications

## Corona 60 / 110

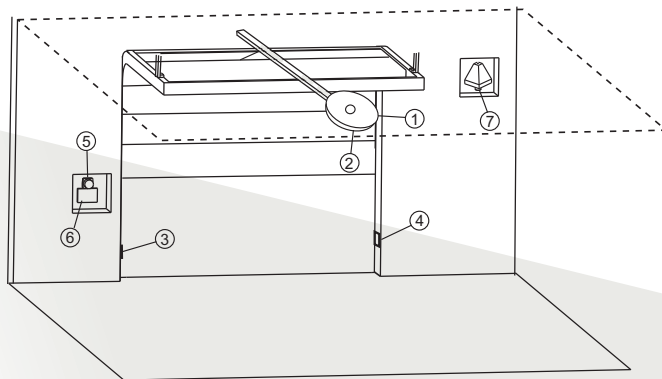
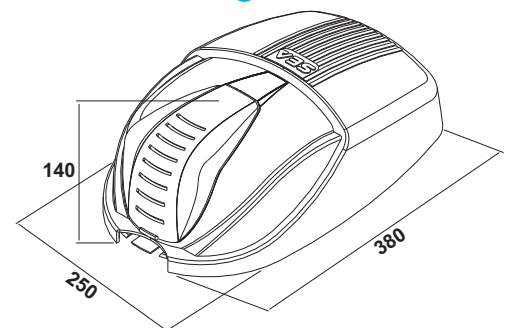
Supply Voltage	230Vac+5% 50/60Hz
Motor Power	140 / 370 W
Opening Speed	adjustable
Frequency of use	60% / 40%
Max pushing force	600 / 1100 N
Operating Temperature	-20°C + 55°C
Weight	13 / 14 Kg
Max. door weight	60 / 110 Kg
Anti-crushing clutch devices	Electronic
Protection class	IP20
Limit switch	Mechanical

## CONTROL BOARD Specifications

### Mini Gate 1 24 V

- Control of 1 no. 24Vdc motor.
- Electronic slow down in opening and closing.
- Slow down at end of travel both directions.
- Anti -crush sensitivity adjustment.
- Self-learning run time system.
- Adjustable limit switch final stop position.
- Motor rotation sensor for additional safety.
- Safety edge and emergency stop button terminals.
- Separate warning light system available(with pre-flashing).
- Courtesy light management
- Connector for plug-in Signal-type radio receiver

## Dimensions in (mm)



## ACCESSORIES

Loop Detectors / Photocells / Key Pads / Card Readers / Transmitters & Receivers / Telephone Entry Systems / Intercom Systems

### OPERATORS FOR BALANCED OVERHEAD DOORS WITH SPRINGS

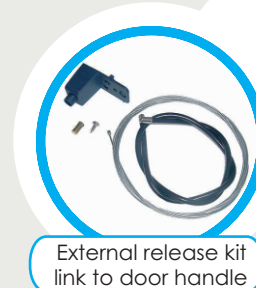
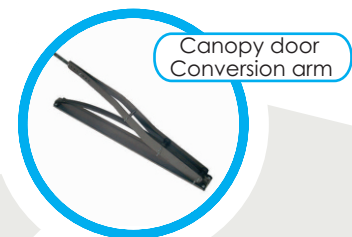
MAX DOOR DIMENSIONS	up to 2,3 H x 3 L mt	CORONA 60
	up to 2,3 H x 4 L mt	CORONA 110

### OPERATORS FOR COUNTERBALANCED OVERHEAD DOORS

MAX DOOR DIMENSIONS	up to 2,7 H x 3 L mt	CORONA 60
	up to 2,7 H x 4 L mt	CORONA 110

### OPERATORS FOR SECTIONAL DOORS FOR GARAGES

MAX DOOR DIMENSIONS	up to 2,4 H x 3,5 L mt	CORONA 60
	up to 2,4 H x 5 L mt	CORONA 110



## Kit CORONA

- 1 no. Operator CORONA (60 or 110) with MINI GATE 1 24V control unit, plug-in receiver, courtesy light.
- 1 no. 433 MHz Dip switch or rolling code SMART transmitter.
- 3 no. Pieces of aluminium guide for chain (1 m) (Single piece track available).
- 1 no. Accessory kit for installation.
- 1 no. Internal manual release with cord.