



RainDirector®

**Intelligent mains
water management
system**

**Low energy
consumption**

**Automatic mains
water switchover if
storage tank is low**

**Failsafe mains backup
during power cut or
pump failure**

**Auto-refresh
function cycles
water every 3 days if
occupants away**

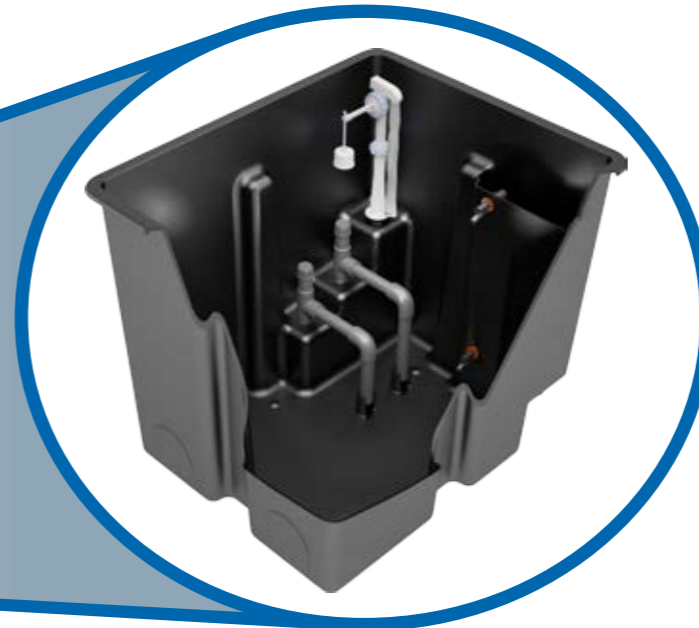
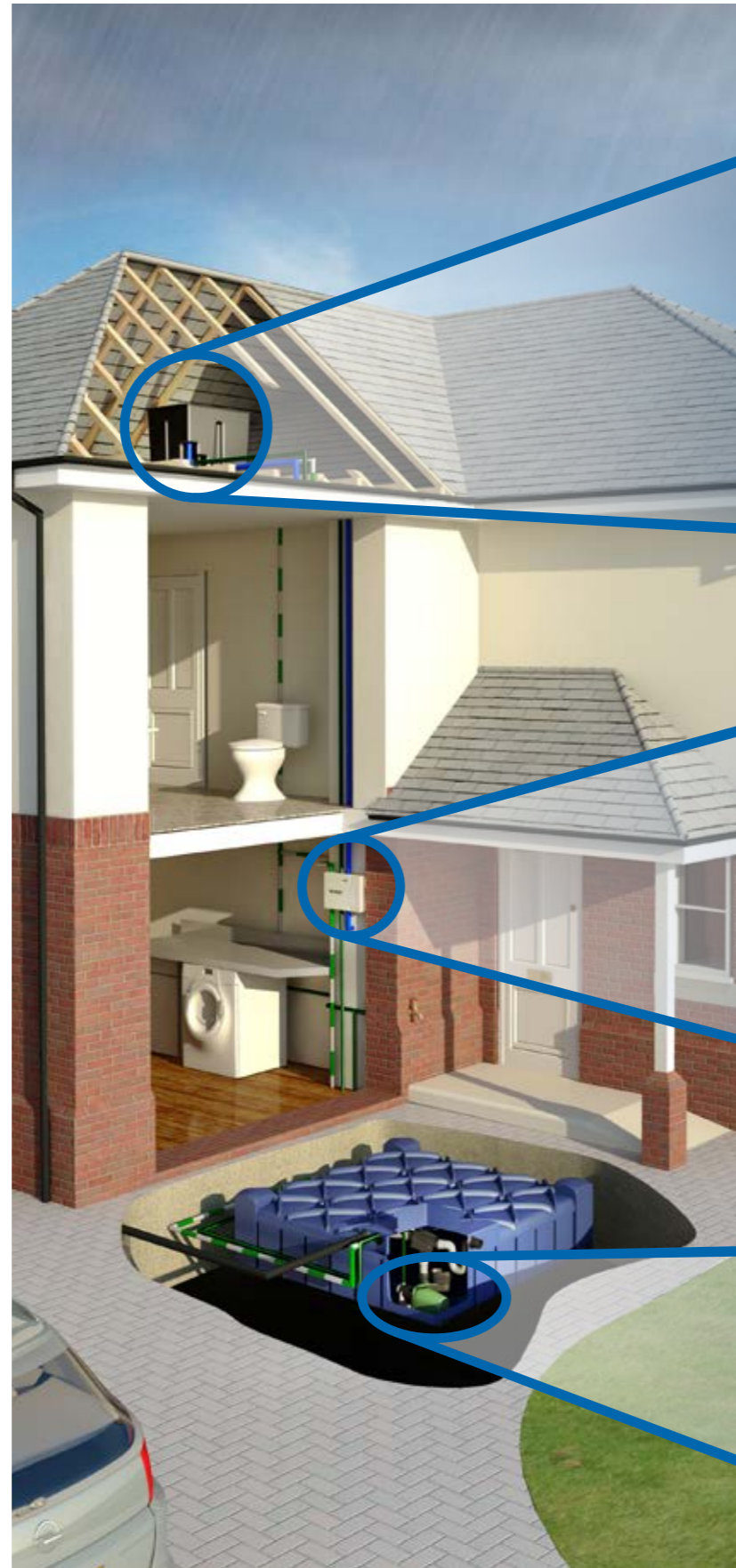
**Less wear and tear on
the pump and other
components**



**GRAVITY
FEED**

HOW DOES THE RAIN DIRECTOR WORK?

- Rainwater falls onto the roof, down the down pipes, across a filter and into a storage tank, usually situated below ground.
- When demanded, rainwater is pumped from the underground tank through the control panel up to the Smart Header Tank within the loft space.
- Rainwater inside the Smart Header Tank will gravity feed down to toilets and washing machines, until the Smart Header Tank is nearly empty.
- Inside the Smart Header Tank there are two level sensors, upper and lower. When the water level drops to the lower sensor a message is sent to the control panel to allow rainwater to enter the Smart Header Tank.
- Rainwater will fill the Smart Header Tank until it reaches the upper sensor. The pump will then shut down and not run again until water reaches the lower sensor.
- The control unit automatically registers when rainwater is unavailable and fills the Smart Header Tank with mains water. This means only a minimum amount of mains water is used until the next rainfall.
- Finally, if the water within the Smart Header Tank is left unused, the system will automatically refresh the water every 3 days to protect against any issues with water quality.



Smart Header Tank

- Upper and lower electronic sensors.
- Fail safe overflow capable of coping with both rain and mains water.
- Rainwater inlet.
- Mains water inlet.
- AB air gap.
- 100 litres capacity.
- 600mm (W) x 490mm (H) x 500mm (D).

- Mains water feed and manual bypass.
- Rainwater feed.
- Auto-refresh after 3 days.
- Electronic solenoid valve.
- Control panel with push buttons and light indications.
- Silent operation.
- Safe and efficient 12v power supply.
- 380mm (W) x 270mm (H) x 95mm (D).

- British made high quality submersible pump.
- Custom made for Rainwater Harvesting.
- Pressure sensitive.
- Dry run protected.
- Patented design.
- 2 year warranty.
- Inline filter (not provided with shallow dig systems).

Learn more about the Rain Director with our short video



The Rain Director® saves energy and prolongs pump life as most rainwater harvesting systems stop and start the pump every time a toilet is flushed or water is demanded.

Running Costs Are Less Than 1p Per Person Per Day.



SAVE HALF YOUR WATER BILL FOR 1P A DAY



Rain Mode (Normal Mode): System will use rainwater within the home. If rainwater is not available in the underground storage tank, the system will automatically register and switch over to mains water.



Mains Water Mode: System will use mains water within your home to save rainwater for the garden.



Holiday Mode: Before occupants go on holiday, the button can be pressed, draining the header tank of rainwater and filling with treated mains water, preventing water quality issues. When the system is used again it will automatically revert back to Rain mode.



Refresh Function: If no activity is registered the system will automatically refresh the water within the smart header tank every 3 days. The system will drain the smart header tank back to the underground tank, and refill the smart header tank with fresh water. This guarantees high quality water with no risk of discolouration or smells.

Rain Director® Components:

- 1. Smart header tank:** 100 litres capacity. 600mm (W) x 490mm (H) x 500mm (D).
- 2. Rain Director®:** 380mm (W) x 270mm (H) x 95mm (D).
- 3. HydroForce Series 3:** Submersible pump to fit in underground storage tank.
- 4. Cat.5 Cable:** To connect the smart header tank to the control panel.
- 5. Installation guide:** Simple, easy to use and picture based.

BRINGING RAINWATER HARVESTING INTO THE 21ST CENTURY.

- Low energy use using 6 - 8 times less electricity than other rainwater harvesting systems.
- Provides water in every situation: Low rainwater, power cut or pump failure.
- No discoloured water.
- Stylish, easy to use control panel.
- Smart user functionality.
- No pump noise.
- Plumber friendly install, with easy to follow, picture based instructions.

RainWater Harvesting Limited provides products conforming to British legislation (Code for Sustainable Homes, BREAAAM, WRAS, the UK Building Code of Practice for rainwater harvesting systems BS 8515-2009) but also to international quality standards ISO 9001 Design & Build, EN976, EN858, TÜV and/or CE.

Most of our products are listed on the Water Technology List (WTL), providing information on water-saving products that qualify for tax relief for commercial companies.

The Rain Director® is protected by patent applications GB 0818131.5, 0907159.8 and 0917265.1 and received approval from WRAS under the number 0912064. The trade mark Rain Director® is registered and protected. All rights reserved – RainWater Harvesting Limited© 2013



RainWater Harvesting Ltd.
Unit A, Harrier Park, Southgate Way,
Orton Southgate, Peterborough PE2 6YQ

Trade: www.rainwater-harvesting.co.uk
Email: info@RainWaterHarvesting.co.uk
Phone **01733 405111** - Fax 01733 230996

