



# TOX®-PowerKurver

- The versatile TOX®-Cam-Presses

The new generation!



# TOX®-PowerKurve:

The new generation of cam generated press forces.

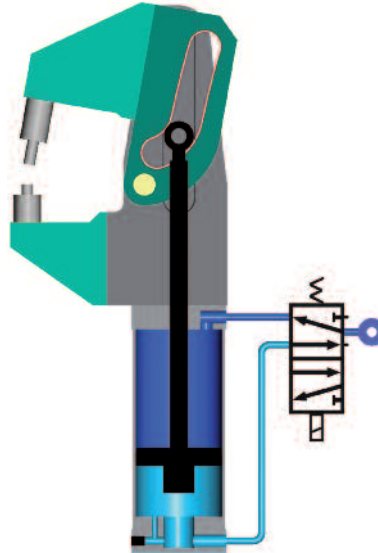
Also available with electric drive!

### Function:

The piston of the TOX®-PowerKurve, when pressurized with air, pushes the high capacity rollers against the cam surface in the cam lever. The in-house developed and patented cam shape produces a constant force over the adjustable stroke.

### Advantages:

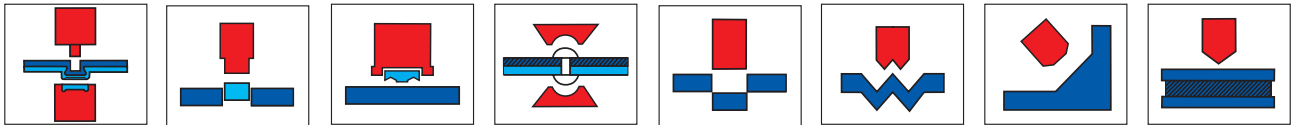
- Part accessibility
- Top loading
- Cost effective when compared against a C-frame or machine unit with indexing slide
- Higher force compared to toggle lever
- Robust, straight pneumatic cylinder drive (also available with electric drive)
- **Clamping and Clinching at the same time**



### The TOX®-PowerKurve offers the following features:

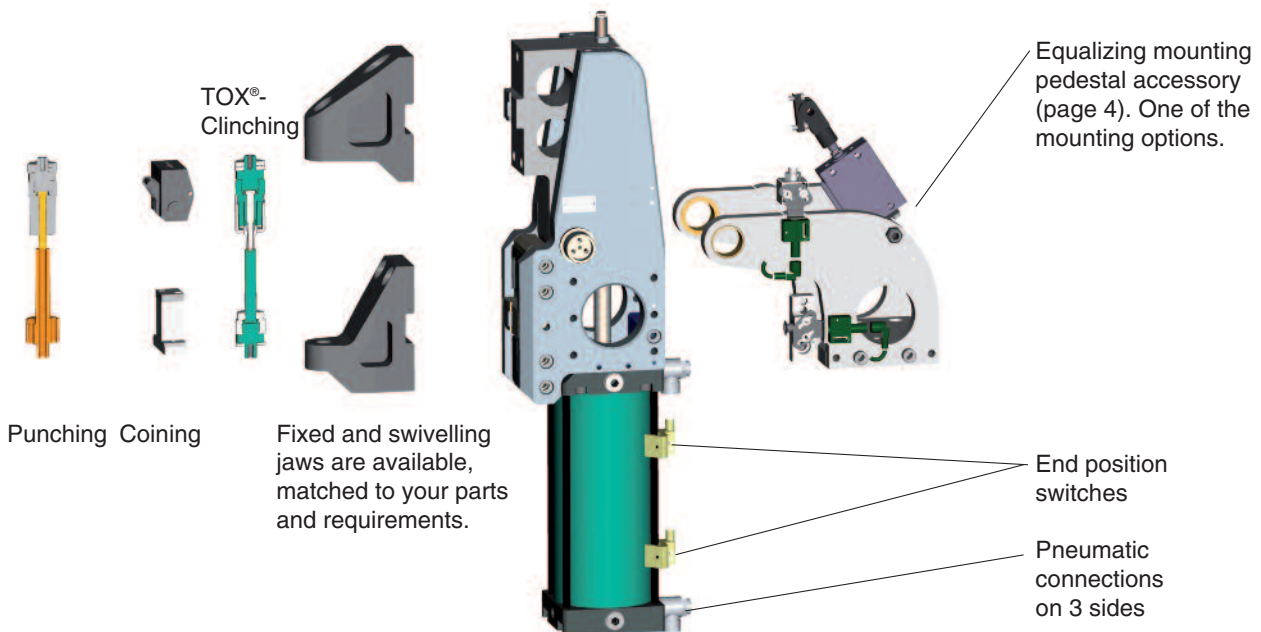
- Constant Force-Travel characteristic over the working stroke
- Fast approach stroke
- Smooth power stroke initiation
- High press forces with low air pressure
- Low air consumption
- High stroke frequency
- Compact design
- Adjustment possibility of longitudinal and transverse axes

For applications such as clamping, clinching, cutting, coining or bending, one needs repeatable forces which can also be applied in hard to reach places.

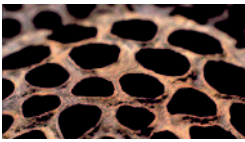


## Modular system:

Our modular system gives you the freedom to match the TOX®-PowerKurve to your specific requirements. Custom solutions are also available. We solve your application and quality assurance requirements with clear defined interfaces.







## TOX®-Coining TOX®-Punching

### TOX®-PowerKurver Type: KK 20

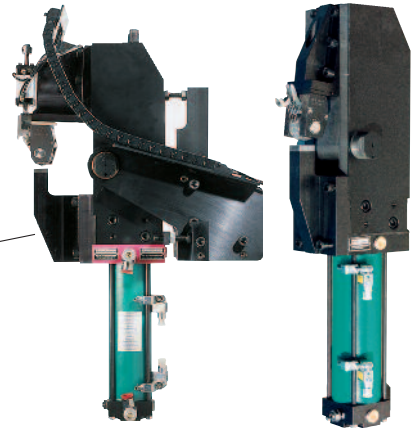
The quick approach stroke, the force buildup during the power stroke and the optimum part loading accessibility are some of the key features of the TOX®-PowerKurver KK 20 with a press force capacity up to 20 kN.

See data sheet 70.02  
for detailed information

### Ordering Example:

KK 020.090  
 Opening angle  
 Press force (kN)  
 TOX®-PowerKurver

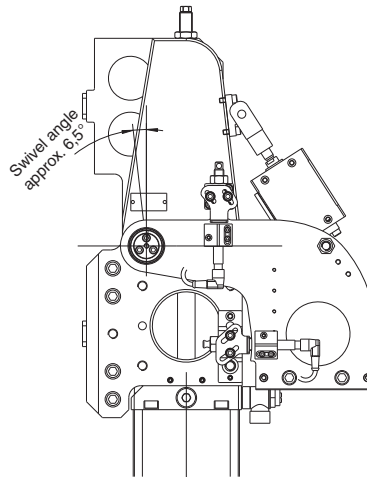
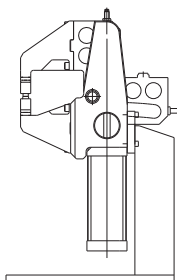
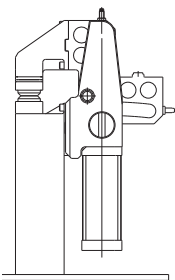
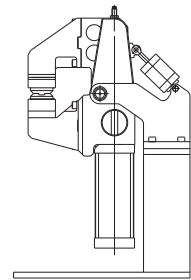
Example:  
 KK with automatically  
 advancing marking tool



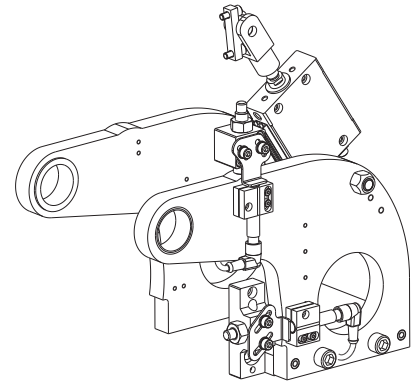
## Accessories

### Equalizing mounting pedestal KKZ 06 for KK 90

The TOX®-PowerKurver can be mounted in various ways. One of the common ways is with the TOX® swivel equalizing pedestal.



The tool is pushed against the workpiece by the swivel pedestal. Position and part tolerances are equalized, which proves advantageous for the process quality of clinching, embossing and marking operations.



**Scope of delivery:**  
 Swivel pedestal complete with bushings and dampening elements, without mounting screws.

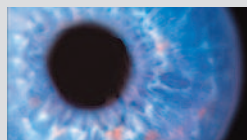
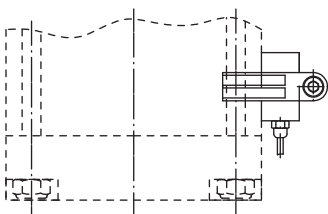
**Order No. KKZ 06**

A simplified version for the KK 20 TOX®-PowerKurver is available.

### Accessories: End position switch

Contactless 24 V. The upper end position switch can be used as a tool position sensor within the power stroke, as due to the large mechanical intensification ratio a measuring accuracy of for example  $\pm 1/100$  mm at a jaw length of 100 mm is achieved.

**Order No. KKZ 03.000**



### TOX®-Controls and TOX®-Monitoring

The TOX® Process Monitoring CEP 400 was specifically designed for the TOX®-Joining process. It helps to check, monitor and control all related quality parameters.

