

Premium SE Pro

700-3000VA

Single-phase input

Single-phase output

Uninterruptible Power Supply

Main Features

- On-line double conversion
- Automatic bypass switch
- Low impact on source supply
- Input power factor >0.99
- Input current THDI ≤7%
- Superior battery management
- 50 or 60Hz operation
- Wide input voltage range
- Battery start-up
- Various battery options
- RS-232 & USB ports
- SNMP network card option
- Free software



Tel: +44 (0)1920 871077

Fax: +44 (0)1920 871337

Email: sales@cetronicpower.com

Your satisfaction is our motivation

www.cetronicpower.com

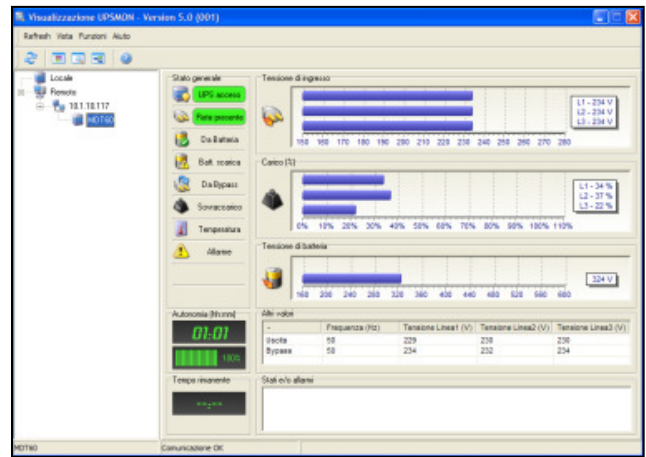
SPECIFICATIONS

MODEL	SEP 700	SEP 1000	SEP 1000ER	SEP 1500	SEP 2200	SEP 2200ER	SEP 3000	SEP 3000ER
Rated Power (VA)	700	1000		1500	2200		3000	
Power (W)	560	800		1200	1760		2400	
INPUT								
Nominal voltage	220 – 230 – 240 Vac							
Nominal frequency	50 or 60 Hz ± 5%							
Power factor	> 0.99							
Current distortion	<7%							
BYPASS								
Voltage tolerance	180 – 264 Vac							
Frequency tolerance	Frequency selected (from ± 1.5Hz to ± 5Hz configurable)							
OUTPUT								
Frequency	Selectable: 50 Hz or 60 Hz or automatic selection							
Static variation	± 1%							
Dynamic variation	< 5% in 20 msec							
Waveform	Sinusoidal							
Crest factor	3:1							
BATTERIES								
Type	Sealed lead acid							
Charging time	2-4 hours							
OVERLOAD TIMES								
100% < Load < 110%	2 minutes							
110% < Load < 150%	5 seconds							
Load > 150%	1 second							
OTHER FEATURES								
Weight (kg)	11	14	7	15	26	11	28	14
Dimensions (HxWxD)	235 x 158 x 422mm				333 x 190 x 446mm			
Communication	USB / DB9 with RS232 and contacts / Slot for communications interface							
Compliance with Standards	Safety: EN 62040-1 and Directive 2006/95/EL; EMC: EN 62040-2 category C2 and Directive 2004/108/EL							
Ambient temperature	0°C / +40°C							
Relative humidity	<95% non-condensing							
Colour	Black							
Noise level	<40 dBA @ 1m							

Specifications subject to change prior to notice

Optional Extras

- SNMP Network Interface Card
- Relay Card (Volt-free contacts)
- External Manual Bypass Switch
- Extended Battery Back-Up Times
- Remote Alarm Panel
- 19" Rack-Mounted Units



Software Screenshot



Front panel display



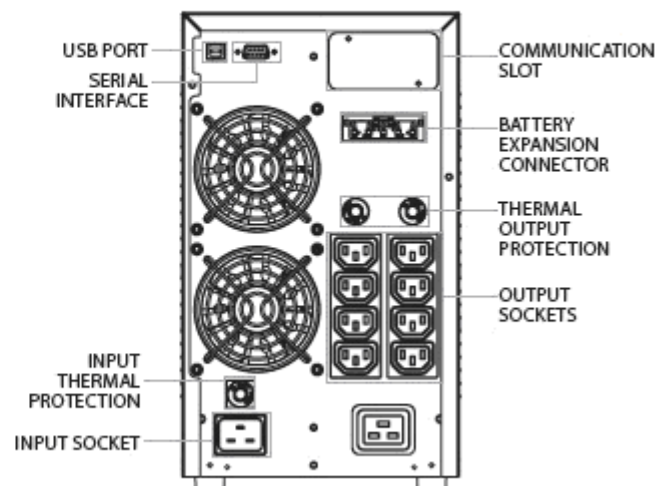
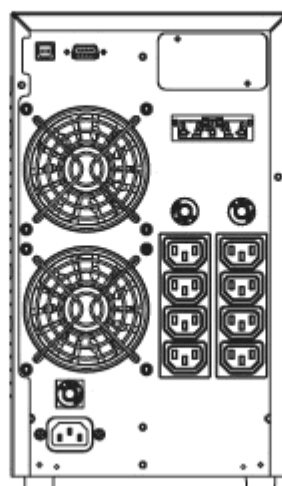
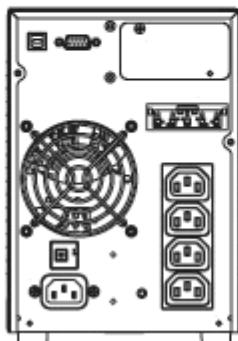
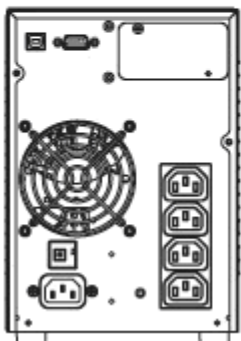
Remote Alarm Panel

PSEP 700
PSEP 1500

PSEP 1000
PSEP 1000ER

PSEP 2200
PSEP 2200ER

PSEP 3000
PSEP 3000ER



Issue 08/13



Tel: +44 (0)1920 871077
Fax: +44 (0)1920 871337
Email: sales@cetronicpower.com



Your satisfaction is our motivation
www.cetronicpower.com