

Our policy is one of continuous improvement and we reserve the right to change, alter or modify any detail, design, weight, dimension or code without prior notice being given.



R·M·D
KWIKFORM

PRODUCTS

GLOBAL STANDARDS, REGIONAL SERVICE, LOCAL PRESENCE

worldwide head office

RMD Kwikform,

Brickyard Road, Aldridge, Walsall W59 8BW, UK.

Tel: +44 (0)1922 743743

Fax: +44 (0)1922 743400

E-mail: info@rmdkwikform.com

www.rmdkwikform.com

A member of Interserve Plc.

Brochure No. 2053 (European) - Product Catalogue - Issued September 2007

The purpose of this handbook is to provide a quick reference guide for RMD Kwikform products.

Products featured in this handbook are accompanied by a comprehensive range of brochures and technical data sheets which can be found by visiting our website or by contacting your local branch.

Formwork

Superslim Soldiers	3
Maxima	13
Minima	27
Rapid Bar Tie	37
Aluminium Beams	43
GTX Beams	49
Airodek	51
Autoclimb	59
Rapidclimb	63
Webtie	67
Paraslim	71
Ultraframe	77
Concrete Accessories	83

Shoring

Alshor Plus	97
Megashor	105
Rapidshor	111
Kwikstage Shoring	117

Access

Kwikstage Access	125
-------------------------	------------

Safety Products

Ultraguard	131
-------------------	------------

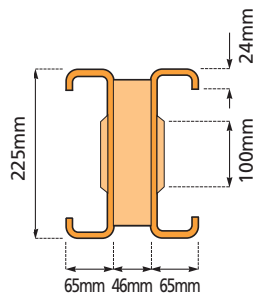
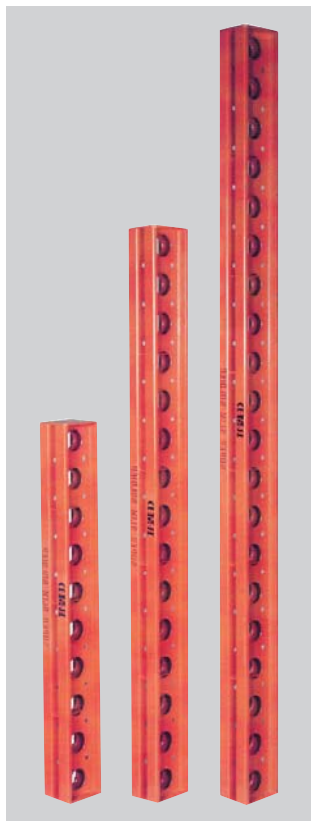
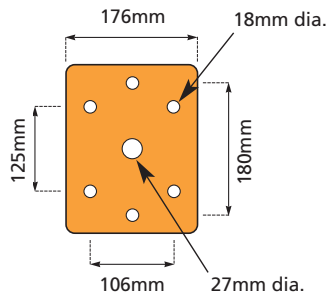
Information

Handling of Equipment	135
Branch Network	137

SUPERSLIM

Superslim Soldier Beams

Code	Description	Wt. (Kg)
SSX13600	Superslim Soldier 3600mm	72.18
SSX12700	Superslim Soldier 2700mm	55.38
SSX11800	Superslim Soldier 1800mm	38.80
SSX10900	Superslim Soldier 900mm	22.00
SSX10720	Superslim Soldier 720mm	18.74
SSX10540	Superslim Soldier 540mm	15.24
SSX10360	Superslim Soldier 360mm	11.98
SSX10180	Superslim Soldier 180mm	8.7
SSX10090	Superslim Soldier 90mm	7.32
SSU10035	Superslim Soldier - 360mm O/E	11.69
SSX10040	Superslim End Plate 10mm	2.91

**Typical Section****Plan on End Plate****Anchor Plate**

Code	Description	Wt. (Kg)
SSU10036	Superslim Anchor Plate 15mm	7.40

**Access Bracket**

Code	Description	Wt. (Kg)
SSU10031	Superslim Access Bracket	6.65

**Spreader Beam Plate**

Code	Description	Wt. (Kg)
SSU10015	Superslim Spreader Beam Plate	10.60
SSU10004	Superslim Prop Pivot Tube	1.81

**Support Plate**

Code	Description	Wt. (Kg)
BNU16001	Nut - M16 Hexagonal Pltd	0.03
BNU16007	Set Pin - M16 x 40 HT	0.10
SSX10042	Superslim Form Support Plate	5.29





Dual Purpose Jack and Adapter Tube

Code	Description	Wt. (Kg)
SSX90043	Universal Soldier Jack	5.5
SSU10009	Jack Adaptor Tube	1.24



Lifting Plate

Code	Description	Wt. (Kg)
SSU10032	Superslim Lifting Plate 15kN	3.19
BNX20030	M20 x 90 Bolt Gr 8.8 BZP	



Super Slim Turnbuckle and Plumbing Foot

Code	Description	Wt. (Kg)
SSU10016	Superslim Turnbuckle 914-1222	8.25
SSU10033	Superslim Plumbing Foot	11.51
BNX20030	M20 x 90 Bolt Gr 8.8 BZP	

Waler Plate 15mm Rapid Bar Tie system

Code	Description	Wt. (Kg)
BTX10004	Waler Plt - HD 90 kN	1.76
BTX10021	Waler Plt - Standard 80 kN	1.35
BTX10014	Waler Plt - Light 55 kN	1.13



High-load Waler Plate 20mm Rapid Bar Tie system

Code	Description	Wt. (Kg)
BTX10029	Waler Plt - Hi Load 160 kN	6.84



Slimshor Porthole Bearing

Code	Description	Wt. (Kg)
SSX10039	Porthole Bearing Galv	2.00
BTX10017	Nut - Hexagon 50mm (15mm bar)	0.16





Prop Jacks LH and RH

Code	Description	Wt. (Kg)
SSU10007	Superslim Prop Jack L.H.	14.48
SSU10008	Superslim Prop Jack R.H.	14.48



Prop Spade End Link & Prop Pivot Tube

Code	Description	Wt. (Kg)
SSU10012	Superslim Prop Spade End Link	3.09
SSU10004	Superslim Prop Pivot Tube	1.81



Tilt Plate

Code	Description	Wt. (Kg)
SSU10034	Superslim Tilt Plate	4.81

Prop Tube End Link

Code	Description	Wt. (Kg)
SSU10013	Superslim Prop Tube End Link	2.88



Superslim Rocking Head

Code	Description	Wt. (Kg)
SSU10023	Superslim Rocking Head 36mm	4.31
BNX10005	M10 x 20 Set Pin GR 8.8 BZP	
BNU11003	M10 Setscrew for Slimshor Head	
SSU10029	Rocking Head Washer M10	0.02

Maximum angle of tilt = 28 degrees



Superslim Adjustable Rocking Head

Code	Description	Wt. (Kg)
SSU10026	Superslim Adjustable Rocking Head 440 - 590mm	24.57



Superslim Adjustable Base

Code	Description	Wt. (Kg)
SSU10025	Superslim Adjustable Base 365-515mm	18.97





Pivot Cleat Set

Code	Description	Wt. (Kg)
SSU10028	Superslim Pivot Cleat Set	8.75
Range = 55 degrees min / 220 degrees max		



Corner Pivot

Code	Description	Wt. (Kg)
SSU10019	Superslim Corner Pivot	7.29



90 Deg Corner

Code	Description	Wt. (Kg)
SSU10003	Superslim 90 Deg Corner	8.66



6-Way Double Connector

Code	Description	Wt. (Kg)
SSU20066	6 Way Double Connector	37.68

6-Way Connector

Code	Description	Wt. (Kg)
SSU20006	Multislim 6 Way Connector	25.00



Joint Stiffeners

Code	Description	Wt. (Kg)
SSU10010	Superslim Joint Stiffener	1.44
BNU16013	Bolt - M16 x 110 Gr. 8.8	0.2
BNU16001	Nut - Hex M16 Plated	0.03



Superslim Soldier Clamp

Code	Description	Wt. (Kg)
AFX20012	Superslim Clamp Assembly	0.24



Timber Waling Clamp Assembly

Code	Description	Wt. (Kg)
BNU10054	Bolt Metric Waling - 117x117	0.25
BNU10055	Bolt Metric Waling - 176x127	0.35
SSU10017	Waling Clamp Plate	0.42
BNX20014	Washer - Plate 50x50x6x18mm	0.14
BNU16001	Nut - M16 Hexagon Plated	0.02



**'B' Clamp**

Code	Description	Wt. (Kg)
RPX10005	'B' Clamp - Tube to Panel	0.68

**'G' Clamp**

Code	Description	Wt. (Kg)
RPX10008	'G' Clamp - Tube Type M16	0.60

**Superslim Tube Clamp**

Code	Description	Wt. (Kg)
SSU10024	Superslim Tube Clamp	1.30

**Bolts, Nuts and Pins**

Code	Description	Wt. (Kg)
BNU16007	Set Pin - M16 x 40 HT	0.09
BNX20030	M20 x 90 Bolt GR 8.8 BZP	0.27
BNX24002	M24 x 110 Bolt GR 8.8 BZP	0.48
BNU16001	Nut - M16 Hexagon Plated	0.03
BNU20001	Nut - M20 Hexagon	0.60
BNU24001	Nut - Hexagon M24	0.10
SSX10046	Superslim 19mm Pin & R Clip	0.29
SSX10045	Superslim 3mm R Clip	0.012
SSX10044	Superslim 19mm Pin	0.27
MSX10042	Megashor connector Pin	0.32





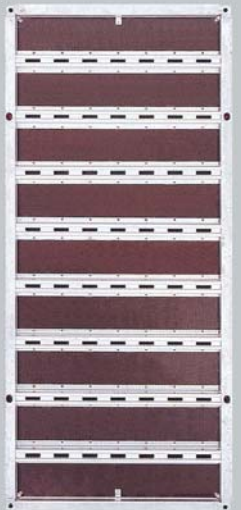
Maxima Panel 1200mm

Code	Description	Wt. (Kg)
MXX21212	Maxima Panel 1200x1200	94
MXX21209	Maxima Panel 1200x900	75.9
MXX21207	Maxima Panel 1200x720	64.9
MXX21206	Maxima Panel 1200x600	57.7
MXX21204	Maxima Panel 1200x450	48.7
MXX21203	Maxima Panel 1200x300	39.5



Maxima Profile Timber

Code	Description	Wt. (Kg)
MXX52706	Maxima Timber - Profile 2700x60mm	7.5

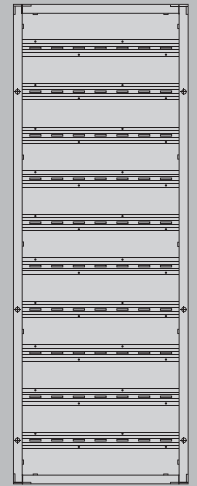


Maxima Panel 2700mm

Code	Description	Wt. (Kg)
MXX22712	Maxima Panel 2700x1200	191.8
MXX22709	Maxima Panel 2700x900	156.0
MXX22707	Maxima Panel 2700x720	134.1
MXX22706	Maxima Panel 2700x600	119.6
MXX22704	Maxima Panel 2700x450	101.5
MXX22703	Maxima Panel 2700x300	82.8

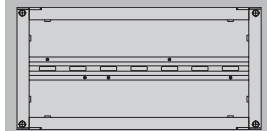
Maxima Panel 3300mm

Code	Description	Wt. (Kg)
MXX23303	Maxima Panel 3300x300	100.7
MXX23304	Maxima Panel 3300x450	123.2
MXX23306	Maxima Panel 3300x600	144.2
MXX23309	Maxima Panel 3300x900	188.0
MXX23312	Maxima Panel 3300x1200	231.6



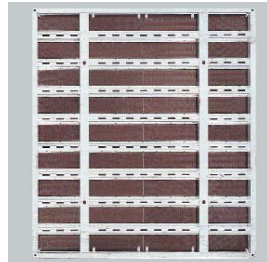
Maxima Panel 600mm

Code	Description	Wt. (Kg)
MXX20603	Maxima Panel 600x300	22.2
MXX20604	Maxima Panel 600x450	27.8
MXX20606	Maxima Panel 600x600	32.9
MXX20609	Maxima Panel 600x900	43.8
MXX20612	Maxima Panel 600x1200	54.5



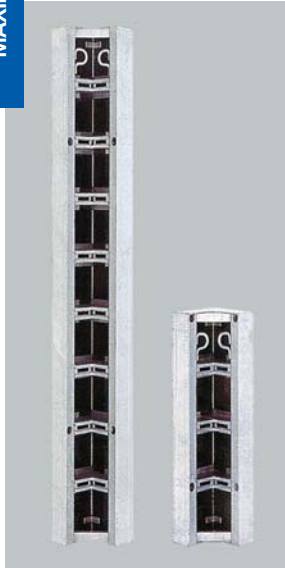
Maxima Large Area Panel

Code	Description	Wt. (Kg)
MXX22724	Maxima Panel 2700x2400mm	392.3
MXX23324	Maxima Panel 3300x2400	466.3



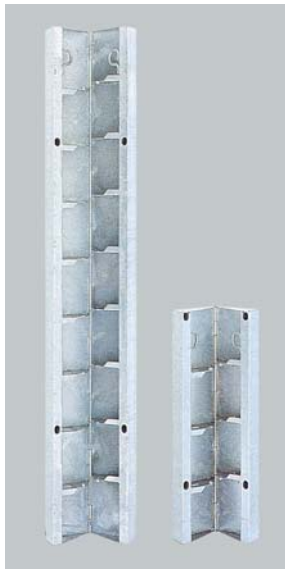
Maxima Internal Corners

Code	Description	Wt. (Kg)
MXX60603	Maxima Internal Fixed Corner 600mm	26.3
MXX61203	Maxima Internal Corner 1200mm	49.6
MXX61503	Maxima Internal Fixed Corner 1500mm	64.7
MXX62703	Maxima Internal Corner 2700mm	108.6
MXX63303	Maxima Internal Fixed Corner 3300mm	132.3



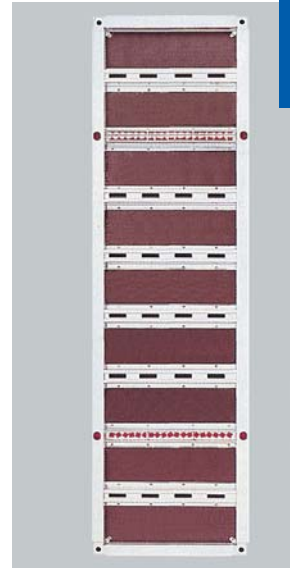
Maxima Hinged Corner

Code	Description	Wt. (Kg)
MXX60606	Maxima Internal Hinged Corner 600mm	27.5
MXX61230	Maxima Internal Hinged Corner 1200mm	54.6
MXX61506	Maxima Internal Hinged Corner 1500mm	67.9
MXX62730	Maxima Internal Hinged Corner 2700mm	120.4
MXX63306	Maxima Internal Hinged Corner 3300mm	148.0



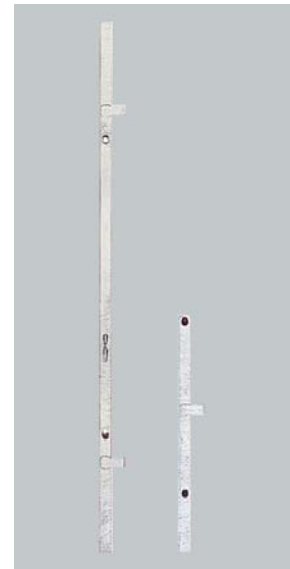
Maxima Universal Panel

Code	Description	Wt. (Kg)
MXX32707	Maxima Universal Panel 2700x720mm	137.6
MXX31207	Maxima Universal Panel 1200x720mm	81.8



Maxima Standard Infill Unit

Code	Description	Wt. (Kg)
MXX32706	Maxima Infill Unit 2700x60mm	26.69
MXX31206	Maxima Infill Unit 1200x60mm	12.17

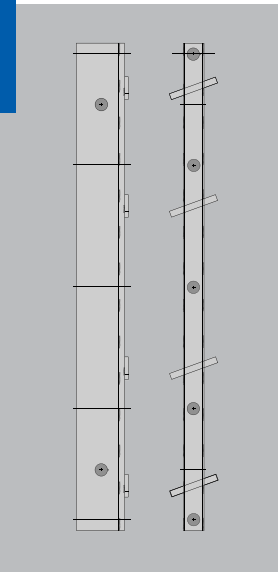


Maxima Infill Unit

Code	Description	Wt. (Kg)
MXX35012	Maxima Infill Unit 1200x50mm	9.88
MXX37512	Maxima Infill Unit 1200x75mm	11.4
MXX35015	Maxima Infill Unit 1500x50mm	12.44
MXX37515	Maxima Infill Unit 1500x75mm	14.36

Maxima Crane Hook

Code	Description	Wt. (Kg)
MXX10010	Maxima Crane Hook	13.7



Maxima Hammer Head Bolt

Code	Description	Wt. (Kg)
MXX10014	Maxima Hammer Head Bolt 250mm	0.41
MXX10013	Maxima Hammer Head Bolt 320mm	0.48



Maxima Multi Clamp

Code	Description	Wt. (Kg)
MXX10017	Maxima Multi Clamp	3.2



Maxima Adjustable Clamp

Code	Description	Wt. (Kg)
MXX10004	Maxima Adjustable Clamp	9.0

Maxima Ground Plate

Code	Description	Wt. (Kg)
MXX10012	Maxima Ground Plate	0.7





Maxima Access Bracket

Code	Description	Wt. (Kg)
MXX10003	Maxima Access Bracket	15.4

Maxima Alignment Rails

Code	Description	Wt. (Kg)
MXX10008	Maxima Alignment Rail 750mm	8.06
MXX10007	Maxima Alignment Rail 1500mm	16.05



Maxima Column Panels

Code	Description	Wt. (Kg)
MXX30933	Maxima Panel 3300 x 900mm	236.0
MXX30927	Maxima Panel 2700 x 900mm	191.9
MXX30915	Maxima Panel 1500 x 900mm	115.4
MXX30909	Maxima Panel 900 x 900mm	83.1



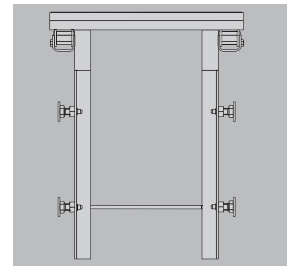
Maxima Column Hoops

Code	Description	Wt. (Kg)
MXX80007	Guardrail Hoop Section	21.0
MXX80008	300mm Hoop Section	7.0
MXX80009	600mm Hoop Section	21.0
MXX80010	1500mm Hoop Section	15.0



Maxima Column Ladders

Code	Description	Wt. (Kg)
MXX80002	Platform Top Ladder Unit	19.9
MXX80003	Platform Ladder Bracket	16.1
MXX80004	Ladder Hanging Bracket	17.32
MXX80005	Panel Top Ladder Unit	8.76
MXX80006	Platform Top Ladder Bracket	15.55
MXX80011	1500mm Extension Ladder	3.0
MXX80012	Outer Sliding Ladder	3.6
MXX80013	Inner Sliding Ladder	3.9
MXX80014	Ladder Pin	





Column Platform

Code	Description	Wt. (Kg)
MXX10027	Maxima Column Access Platform	195.8

Shown Folded

Maxima Corner Alignment Rail

Code	Description	Wt. (Kg)
MXX10009	Maxima Corner Alignment Rail	13.76

Maxima Edge Tie Bearing

Code	Description	Weight (Kg)
MXX10011	Maxima Edge Tie Bearing	2.42

Stripping Corner Panels

Code	Description	Wt. (Kg)
MXX10032	Stripping Corner panel 3300 x 300mm	235.7
MXX10030	Stripping Corner panel 1500 x 300mm	109.14
MXX10031	Stripping Corner panel 1200 x 300mm	89.39

Panel Connections

Code	Description	Wt. (Kg)
MXX10045	Panel Connecting Bolt	0.99
MXX10046	Panel Connecting Nut	0.69

Panel Moving Hook

Code	Description	Wt. (Kg)
MXX10035	Maxima Panel Moving Hook	1.2

Stripping Corner Multi-Clamp

Code	Description	Wt. (Kg)
MXX10070	Stripping Corner Multi-Clamp	3.01

Stripping Corner Lifting Attachment

Code	Description	Wt. (Kg)
MXX10069	Eye Bolt Assembly	7.64
MXX10048	Lifting Attachment	6.51





Turnbuckle/Ratchet for Stripping Corners

Code	Description	Wt. (Kg)
MXX10047	Turnbuckle/Ratchet	4.7

Fillet Strip

Code	Description	Wt. (Kg)
MXX10051	Fillet Strip 2400mm	0.049
MXX10050	Column Panel Fillet Clip	0.016



Hydraulics for Stripping Corners

Code	Description	Wt. (Kg)
MXX10053	Hydraulic Cylinder	3.00
MXX10054	Hydraulic Pump	10.9
MXX10055	Hydraulic Pipe 2m	1.50
MXX10056	Hydraulic Pipe 3m	1.75
MXX10057	Hydraulic Pipe 4m	2.0
MXX10058	Hydraulic 'Tee' Connector	0.30
MXX10060	Hydraulic straight Connector	0.20
MXX10061	Hydraulic Manifold	1.14
MXX10062	Hydraulic Pump Mounting Bracket	10.7
OCU10046	Hydraulic Oil 5 Litres	

Connections (bolt, pin & 'R' clip)

Code	Description	Wt. (Kg)
MXX10049	Stripping Corner Pin	0.25
MXX10038	Column Connecting Bolt	
	Cast & Prefabrication	1.94
SSX10045	3mm 'R' Clip	0.012



Maxima Alignment Prop

Code	Description	Wt. (Kg)
MXX10005	Maxima Alignment Prop	38.64
MXX10006	Maxima HD Alignment Prop	60.22
MXX10025	Superslim Prop Adapter	3.33

Rapid Bar Tie

Code	Description	Wt. (Kg)
BTX30015	Bar Tie per m 15mm	0.25
BTX20020	Bar Tie per m 20mm	1.94



Maxima Combination Tie Plates

Code	Description	Wt. (Kg)
MXX10043	Maxima Rapid Tie Plate 15mm	1.2
MXX10021	Maxima Rapid Tie Plate 20mm	1.6





Maxima Sealers

Code	Description	Wt. (Kg)
MXX10019	Maxima Universal Panel Sealers - 100	0.1



Maxima Tie Plugs

Code	Description	Wt. (Kg)
MXX10022	Maxima Tie Hole Plug - 100	0.4





Panels

Code	Description	Wt. (Kg)
MMX21230	Minima Panel - 1200x300mm	19.5
MMX21245	Minima Panel - 1200x450mm	24.8
MMX21260	Minima Panel - 1200x600mm	29.55
MMX21275	Minima Panel - 1200x750mm	34.46
MMX21290	Minima Panel - 1200x900mm	39.00
MMX21530	Minima Panel - 1500x300mm	24.64
MMX21545	Minima Panel - 1500x450mm	30.25
MMX21550	Minima Panel - 1500x500mm	32.20
MMX21555	Minima Panel - 1500x550mm	34.10
MMX21560	Minima Panel - 1500x600mm	35.90
MMX21565	Minima Panel - 1500x650mm	37.87
MMX21575	Minima Panel - 1500x750mm	41.7
MMX21590	Minima Panel - 1500x900mm	47.35
MMX22730	Minima Panel - 2700x300mm	43.14
MMX22745	Minima Panel - 2700x450mm	52.72
MMX22750	Minima Panel - 2700x500mm	56.0
MMX22755	Minima Panel - 2700x550mm	59.2
MMX22760	Minima Panel - 2700x600mm	63.33
MMX22765	Minima Panel - 2700x650mm	65.52
MMX22775	Minima Panel - 2700x750mm	71.96
MMX22790	Minima Panel - 2700x900mm	81.58

Multi Purpose Panels

Code	Description	Wt. (Kg)
MMX41270	Minima MP Panel - 1200x700mm	37.00
MMX41570	Minima MP Panel - 1500x700mm	39.2
MMX42770	Minima MP Panel - 2700x700mm	60.1

Hinged Corners

Code	Description	Wt. (Kg)
MMX51230	Minima Hinge Corner 1200x300mm	39.52
MMX51515	Minima Hinge Corner 1500x150mm	27.8
MMX51530	Minima Hinge Corner 1500x300mm	41.3
MMX52715	Minima Hinge Corner 2700x150mm	49.2
MMX52730	Minima Hinge Corner 2700x300mm	71.7

Inner Corners

Code	Description	Wt. (Kg)
MMX31230	Minima Inner Corner 1200mm	41.4
MMX31570	Minima Inner Corner 1500mm	37.9
MMX32730	Minima Inner Corner 2700mm	66.2

Alignment Props

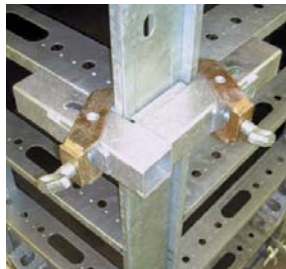
Code	Description	Wt. (Kg)
MMX10005	Minima Aligning Prop - Medium	22.9
MMX10017	Minima Aligning Prop - Short	12.66





Adjustable Clamp

Code	Description	Wt. (Kg)
MMX10002	Minima Adjustable Clamp	5.0



Corner Clamp

Code	Description	Wt. (Kg)
MMX10001	Minima Corner Clamp	6.1



Minima Wedge Clamp

Code	Description	Wt. (Kg)
MMX10028	Minima Wedge Clamp	3.37



Minima Clamp

Code	Description	Wt. (Kg)
MMX10003	Minima Clamp	2.9

Waler Plate

Code	Description	Wt. (Kg)
MXX10043	Maxima Rapid Tie Plate 15mm	1.2
MMX10022	Minima AZ Tie Nut 230	2.4
MMX10010	Minima Waler Spanner 300mm	0.73
MMX10031	Minima Waler Spanner 500mm	1.01



Rapid Bar Tie

Code	Description	Wt. (Kg)
BTX20015	Rapid Bar Tie per cut 15mm	
BTX20020	Rapid Bar Tie per cut 20mm	

For a full list of Rapid Bar Tie lengths see page 36



Edge Tie Bearing

Code	Description	Wt. (Kg)
MMX10023	Minima Edge Tie Bearing	2.4



Plates

Code	Description	Wt. (Kg)
MXX10012	Ground Plate 5 x 12	0.67
BNX20022	75x75x6x12 dia. Plate Washer	0.5





Alignment Rails

Code	Description	Wt. (Kg)
MXX10008	Maxima Alignment Rail 750	8.06
MXX10007	Maxima Alignment Rail 1500	16.05

Minima Access Bracket

Code	Description	Wt. (Kg)
MMX10006	Minima Access Bracket	13.35



Ultraguard Post

Code	Description	Wt. (Kg)
SAX12550	Ultraguard Barrier 2550mm	17.3
SAX13150	Ultraguard Barrier 3150mm	25.0
SAX11200	Ultraguard Post 1.2m	2.2



Crane Hook

Code	Description	Wt. (Kg)
MMX10021	Minima Crane Hook	8.2



Nuts and Bolts

Code	Description	Wt. (Kg)
MMX10010	Minima Waler Tie 300	0.8
BTX10017	Rapid Tie Hex Nut	0.2
MMX10012	Minima Centering Tension Bolt	1.0
MMX10014	Minima MP Bolt	0.59
MMX10015	Minima MP Nut	0.5
MMX10022	Minima AZ Tie Nut 230	2.38
MMX10038	Minima Corner Bolt	0.7
MMX10023	Minima Edge Tie Fastener	2.3
SSX10046	Superslim 19mm Pin and R Clip	0.3





Turnbuckle/Ratchet for Stripping Corners

Code	Description	Wt. (Kg)
MXX10047	Turnbuckle/Ratchet	4.7

Hydraulics for Stripping Corners

Code	Description	Wt. (Kg)
MXX10053	Hydraulic Cylinder	3.00
MXX10054	Hydraulic Pump	10.9
MXX10055	Hydraulic Pipe 2m	1.50
MXX10056	Hydraulic Pipe 3m	1.75
MXX10057	Hydraulic Pipe 4m	2.0
MXX10058	Hydraulic 'Tee' Connector	0.30
MXX10060	Hydraulic straight Connector	0.20
MXX10061	Hydraulic Manifold	1.14
MXX10062	Hydraulic Pump Mounting Bracket	10.7
OCU10046	Hydraulic Oil 5 Litres	

Stripping Corner Panels

Code	Description	Wt. (Kg)
MXX10032	Stripping Corner panel 3300 x 300mm	235.7
MXX10030	Stripping Corner panel 1500 x 300mm	109.14
MXX10031	Stripping Corner panel 1200 x 300mm	89.39



Stripping Corner Fixings

Code	Description	Wt. (Kg)
MXX10049	Stripping Corner Pin	0.25
SSX10045	3mm 'R' Clip	0.012
MMX10038	Corner Bolt	0.7



Adjustable - Clamp

Code	Description	Wt. (Kg)
MXX10040	Adjustable - Clamp (short version)	3.8



Stripping Corner Lifting Attachment

Code	Description	Wt. (Kg)
MXX10069	Eye Bolt Assembly	7.64
MXX10048	Lifting Attachment	6.51



RAPID BAR TIE

RAPID BAR TIE



Rapid Bar Tie

Code	Description	Wt. (Kg)
BTX10100	Rapid Bar Tie 15mm x 1m	1.44
BTX10150	Rapid Bar Tie 15mm x 1.5m	2.16
BTX10175	Rapid Bar Tie 15mm x 1.75m	2.52
BTX10200	Rapid Bar Tie 15mm x 2m	2.88
BTX10250	Rapid Bar Tie 15mm x 2.5m	3.60
BTX10600	Rapid Bar Tie 15mm x 6m	8.68
BTX10750	Rapid Bar Tie 15mm x 7.5m	10.8
BTX20015	Rapid Bar Tie per cut 15mm	-
BTX20020	Rapid Bar Tie per cut 20mm	-
BTX30015	Rapid Bar Tie Per m 15mm	1.44
BTX40100	Rapid Bar Tie 20mm x 1m	2.67
BTX40150	Rapid Bar Tie 20mm x 1.5m	4.00
BTX40200	Rapid Bar Tie 20mm x 2m	5.33
BTX40600	Rapid Bar Tie 20mm x 6m	16.00



Rapid Bar Tie Wing Nut

Code	Description	Wt. (Kg)
BTX10001	Knock on Wing Nut	0.35



Hi Rapid Bar Tie Wing Nut

Code	Description	Wt. (Kg)
BTX10006	Knock on Nut - Hi Load	0.51



Rapid Bar Tie Hexagon Nut

Code	Description	Wt. (Kg)
BTX10017	Nut - Hexagon 15mm Bar	0.16
BTX10005	Nut - Hexagon 20mm Bar	0.40

Standard Waler Plates

Code	Description	Wt. (Kg)
BTX10021	Waler Plate Standard Orange (15mm Bar)	1.35
BTX10014	Waler Plate Light 55 kN Plated (15mm Bar)	1.13



Heavy Duty Waler Plate

Code	Description	Wt. (Kg)
BTX10004	Waler Plate - Heavy Duty (15mm Bar)	1.76



Angle Waler Plate

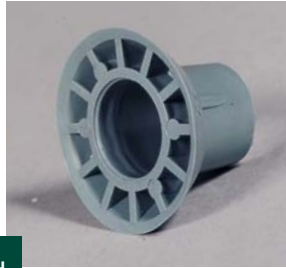
Code	Description	Wt. (Kg)
HTU10001	Waler Plate - Angle 1"	1.40



Hi Load Waler Plate

Code	Description	Wt. (Kg)
BTX10029	Waler Plate - Hi Load (20mm Bar) (AWL = 160kN)	6.84





Rapid Bar Tie Cones

Code	Description	Wt. (Kg)
BTX10018	Plas Cone 10mm	0.01
BTX10008	Plastic Cone - Hi Load 26 Dia.	0.01



Tieseal Cone

Code	Description	Wt. (Kg)
FAU10092	Tieseal cone 22 x 50mm	0.03



Aquafix Stopper

Code	Description	Wt. (Kg)
FAU10022	Aquafix stopper 26mm	0.01
FAU10020	Aquafix stopper 20mm	0.01
FAU10021	Aquafix stopper 22mm	0.01
FAU10023	Aquafix stopper 32mm	0.01



Flexible Hose

Code	Description	Wt. (Kg)
BTU10001	Flexible Hose 19/25mm 30m lg	7.50
BTU10002	Flexible Hose 25/31mm 30m lg	9.56
BTU10012	Flexible Hose 38/44mm 30m lg	14.50

Plastic Conduit Tube

Code	Description	Wt. (Kg)
BTX10019	Plas Tube 22.5mm Bore x 2m	0.22
BTX10009	Plas Tube - Hi Load 26/30 x 2m	0.92



Rapid Bar Tie Connector

Code	Description	Wt. (Kg)
BTX10015	Connector 15mm - Rapid Tie	0.41
BTX10002	Connector 20mm - Rapid Tie	0.90



Ribbed Water Bar Connector

Code	Description	Wt. (Kg)
BTX10011	Connector Ribbed - Water Bar	0.54



Rapid Bar Tie She Bolt

Code	Description	Wt. (Kg)
BTX50700	She Bolt - Rapid Tie 700mm (50mm cover to cast in tie)	1.466
BTX50725	She Bolt - Rapid Tie 725mm (75mm cover to cast in tie)	1.577



Weld-on Anchor

Code	Description	Wt. (Kg)
BTX10010	Anchor - Weld On	0.50

Concrete Anchor

Code	Description	Wt. (Kg)
BTX10012	Expanding Concrete Anchor	0.37

Hydraulic Kit for Bar Tie Anchor

Rapid

Code	Description	Wt. (Kg)
BTX10027	Hydraulic Kit - Rapid Bar Tie Anchor	25.00

Rapid Anchor

Code	Description	Wt. (Kg)
BTX10020	Rapid Anchor Mk1 (AWL = 40kN)	0.224



Albeam

Code	Description	Weight (Kg)
ABX11200	Beam Albeam 1200mm	9.89
ABX11800	Beam Albeam 1800mm	14.8
ABX12400	Beam Albeam 2400mm	19.74
ABX12700	Beam Albeam 2700mm	22.26
ABX13000	Beam Albeam 3000mm	24.69
ABX13300	Beam Albeam 3300mm	27.16
ABX13600	Beam Albeam 3600mm	29.63
ABX14200	Beam Albeam 4200mm	34.58
ABX14800	Beam Albeam 4800mm	39.52
ABX15400	Beam Albeam 5400mm	44.46
ABX16000	Beam Albeam 6000mm	49.41
ABX17200	Beam Albeam 7200mm	59.3
ABX18400	Beam Albeam 8400mm	69.16
ABX19600	Beam Albeam 9600mm	79.07



Alsec

Code	Description	Weight (Kg)
ALX11200	Beam Alsec 1200mm	4.96
ALX11500	Beam Alsec 1500mm	5.41
ALX11800	Beam Alsec 1800mm	7.45
ALX12100	Beam Alsec 2100mm	8.70
ALX12400	Beam Alsec 2400mm	9.93
ALX12700	Beam Alsec 2700mm	11.18
ALX13000	Beam Alsec 3000mm	12.41
ALX13300	Beam Alsec 3300mm	13.66
ALX13600	Beam Alsec 3600mm	14.90
ALX13900	Beam Alsec 3900mm	16.14
ALX14200	Beam Alsec 4200mm	17.39
ALX14500	Beam Alsec 4500mm	18.63
ALX14800	Beam Alsec 4800mm	19.86
ALX15400	Beam Alsec 5400mm	22.35
ALX15800	Beam Alsec 5800mm	24.01
ALX16000	Beam Alsec 6000mm	24.82
ALX17200	Beam Alsec 7200mm	29.80

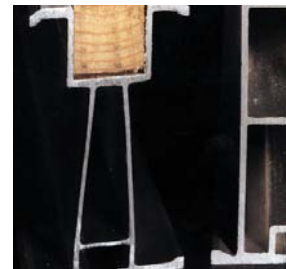
Alform

Code	Description	Weight (Kg)
AFX11200	Beam Alform 1200mm	6.21
AFX11500	Beam Alform 1500mm	7.77
AFX11800	Beam Alform 1800mm	9.32
AFX12100	Beam Alform 2100mm	10.88
AFX12400	Beam Alform 2400mm	12.44
AFX12700	Beam Alform 2700mm	14.00
AFX13000	Beam Alform 3000mm	15.55
AFX13300	Beam Alform 3300mm	17.11
AFX13600	Beam Alform 3600mm	18.67
AFX14200	Beam Alform 4200mm	21.78
AFX14500	Beam Alform 4500mm	25.49
AFX14800	Beam Alform 4800mm	24.90
AFX15400	Beam Alform 5400mm	28.02
AFX16000	Beam Alform 6000mm	31.30
AFX16600	Beam Alform 6600mm	34.25
AFX17200	Beam Alform 7200mm	37.36
AFX19600	Beam Alform 9600mm	49.81



Alform 165

Code	Description	Weight (Kg)
AFX35490	Beam Alform 165 x 5490	30.2
AFX36400	Beam Alform 165 x 6400	35.2
AFX37200	Beam Alform 165 x 7200	40.6





Clamp Assembly Wedge

Code	Description	Wt. (Kg)
AFX20017	Wedge Clamp Assembly	0.24



Alform Light Duty Corner Strap

Code	Description	Wt. (Kg)
AFX20010	Outside Cornerstrap AWL = 20 kN	6.18
BNX16001	M16 x 75 Bolt GR 8.8	0.20



Alform Lok Clamp

Code	Description	Wt. (Kg)
AFX20009	Clamp - Lok C/W Pin AWL = 20 kN	1.68

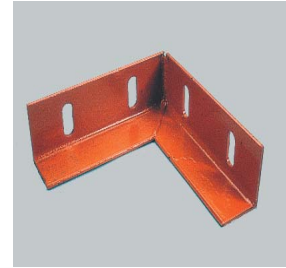


Alform Internal Splice Unit

Code	Description	Weight (Kg)
AFX20008	Internal Splice	3.22
AFX20014	Splice Unit - Arm 75mm	0.33
AFX20013	Clamp Block - Splice	0.09

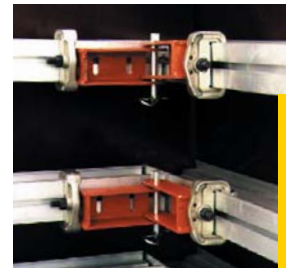
Alform Internal Corner

Code	Description	Wt. (Kg)
AFX20007	Internal Corner	1.10
AFX20002	Alignment Angle	2.26



Alform Adjustable Pivot

Code	Description	Wt. (Kg)
AFX20001	Adjustable Internal Corner	4.07
AFX20018	Pin - Fixing M16 dia	0.24
SSU10004	Superslim R Clip	0.03



Alu Beam Clamp

Code	Description	Wt. (Kg)
SAX10005	Ultraguard Alu Beam Clamp	4.2
SAX10015	Ultraguard Ext Alu Beam Clamp	5.4



Fixings

Code	Description	Wt. (Kg)
BNU16001	Nut - M16 Hex Plated	0.03
AFX20022	Bolt - M12 Unifix	0.05
BNU12001	Nut - M12 Hex Plated	0.01
BNU12004	Wing Nut - M12 Plated	0.01





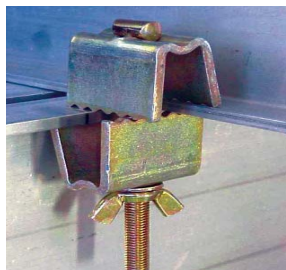
Clamp Assembly - Superslim

Code	Description	Wt. (Kg)
AFX20012	Clamp Assembly - SupesSlim	0.21



Clamp - Flange to Flange Wedge

Code	Description	Wt. (Kg)
ALX10002	Clamp - Flange to Flange Wedge	0.54



Universal Clamp

Code	Description	Weight (Kg)
ALX10001	Clamp Universal	0.65

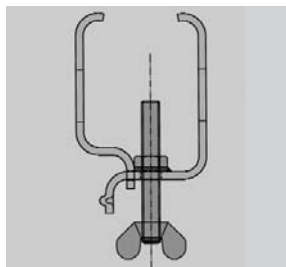
GTX BEAMS

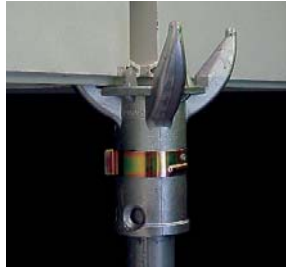
GTX Beams

Code	Beam Length	Colour Code	Wt. (Kg)
GTX22400	2400mm	Yellow	13.34
GTX22700	2700mm	Orange	15.01
GTX23000	3000mm	Grey	16.67
GTX23600	3600mm	Red	20.01
GTX24200	4200mm	White	23.34
GTX24800	4800mm	Green	26.68
GTX25400	5400mm	Black	30.01
GTX26000	5950mm	Blue	33.07

GTX Clamp

Code	Description	Wt. (Kg)
GTX10001	GTX Clamp	0.65
GTX10002	Wedge Clamp	1.09





HD Crown and Sleeve Clip

Code	Description	Wt. (Kg)
ADX20015	Airodek HD Crown	1.33
RSX10009	Rapidshor Sleeve Clip	0.10



Timber Support Bracket

Code	Description	Wt. (Kg)
ADX20011	Prop Head Timber Support Bracket	0.5



Prop Pin

Code	Description	Wt. (Kg)
ADX20012	Airodek Load Release Prop Pin	0.8



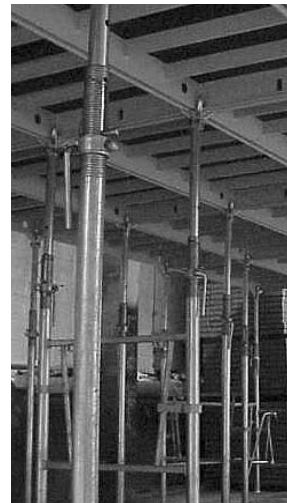
Panels

Code	Description	Wt. (Kg)
ADX18090	Airodek Panel 1800 x 900	25.2
ADX18060	Airodek Panel 1800 x 600	18.6
ADX18030	Airodek Panel 1800 x 300	12.8
ADX09090	Airodek Panel 900 x 900	14.0
ADX09060	Airodek Panel 900 x 600	10.5
ADX09030	Airodek Panel 900 x 300	6.9

Prop

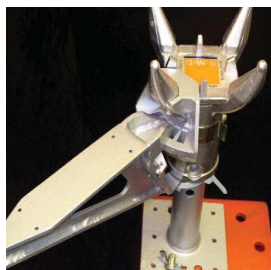
Code	Description	Wt. (Kg)
ADX20005	Airodek Prop for *2150 - 3520mm	22.5

* This is the working floor to soffit height with crown and Panel



Infill Bracket & Support Block

Code	Description	Weight
ADX20026	Airodek Infill Bracket	2.0 Kg
ADX20027	Support Block	0.8 Kg





Assembly Tools

Code	Description	Wt. (Kg)
ADX10009	Airodek Panel Handling Clamp	4.5
ADX10010	Airodek Panel Handling Hook	1.3
ADX20013	Airodek Temporary Prop	4.4

Adj range: 2.3m closed to 4.0m fully open.



Decking Beams

Code	Description	Wt. (Kg)
ADX33000	Airodek Decking Beam 3000mm	23.0
ADX32400	Airodek Decking Beam 2400mm	18.3
ADX31800	Airodek Decking Beam 1800mm	13.6
ADX20030	Airodek Panel Beam Clip	0.03



Spacing Gate

Code	Description	Wt. (Kg)
ADX20007	Airodek Spacing Gate 1800mm	9.8
ADX20006	Airodek Spacing Gate 900mm	6.9

Do not use as a support for access platforms.



Spacing Gate Leg

Code	Description	Wt. (Kg)
ADX20008	Airodek Spacing Gate Leg	2.4

Triangular Panels

Code	Description	Wt. (Kg)
ADX20033	1800 Triangular Panel RH	23.06
ADX20034	900 Triangular Panel RH	13.41
ADX20028	1800 Triangular Panel LH	23.06
ADX20029	900 Triangular Panel LH	13.41

Infill Beams

Code	Description	Wt. (Kg)
ADX20003	Airodek Infill Beam 1800mm	10.01
ADX20004	Airodek Infill Beam 900mm	7.3





Drophead

Code	Description	Wt. (Kg)
ADX30001	Airodek Drophead	8.0
RSX10009	Rapidshor Sleeve Clip	0.1
ADX30003	Airodek Drophead Panel 1800mm	13.0
ADX30004	Airodek Drophead Panel 900mm	7.1

Restraints

Code	Description	Wt. (Kg)
PSX10008	Paraslim Tilt Plate	2.3
SSU10019	Corner Pivot	7.29
AFX20013	Alform Splice Clamp Block	0.09
ADX10002	Web Strap 8m c/w Ratchet	2.0
FAU10053	HSB Excalibur 12 x 75	4.3
BNU20015	Bolt M20 x 100 Gd 8.8	0.36
BNU12001	Nut - M12 Hexagon plated	0.02
ADX10001	Webstrap 6m c/w Ratchet	1.75



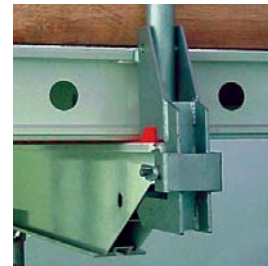
Guardrail Accessories

Code	Description	Wt. (Kg)
ADX20018	Handrail Post H/D	5.81
ADX20016	Handrail Socket	6.11
ADX10004	Handrail Bracket Drophead 8.1	



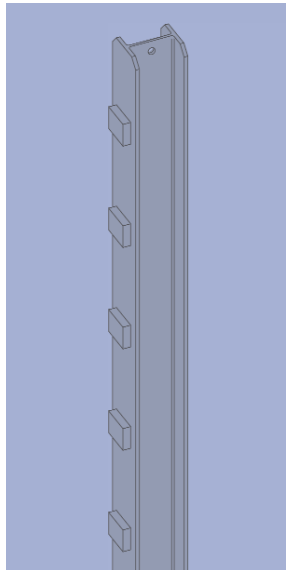
Adapters

Code	Description	Wt. (Kg)
ADX30002	Airodek Alshor Adapter	2.5
ADX10003	Airodek Rapidshor Adapter	2.3
ADX10011	Airodek Universal Adapter	3.27



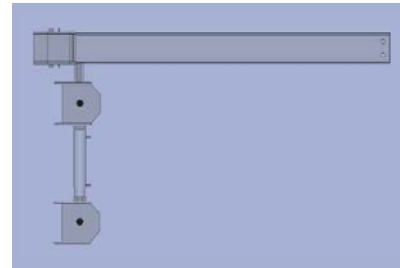
AUTOCLIMB

AUTOCLIMB



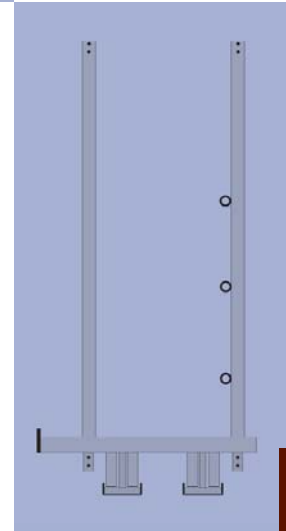
Autoclimb Climbing Mast Assembly

Code	Description	Wt. (Kg)
ACX10010	Climb Mast 6800mm	279.0
ACX10011	Climb Mast Restraint Block	2.2



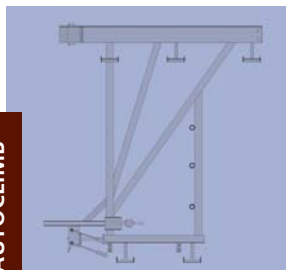
Autoclimb Climbing Head Assembly with cylinder

Code	Description	Wt. (Kg)
ACX10009	Climbing Head Assembly Top	39.5



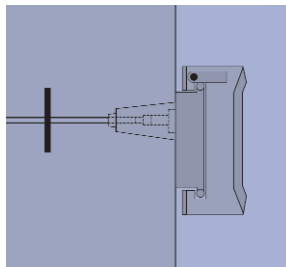
Autoclimb Hanging Access

Code	Description	Wt. (Kg)
ACX10026	Hanging Access Post	20.3
ACX10027	Hanging Access Transom	24.0



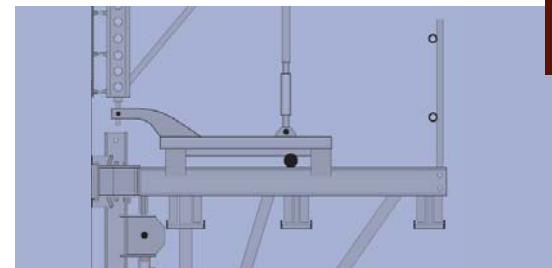
Autoclimb Climbing Bracket Assembly

Code	Description	Wt. (Kg)
ACX10007	Climb Bracket Assembly	371



Autoclimb Wall Plate and Suspension Shoe Assembly

Code	Description	Wt. (Kg)
ACX10042	Wall Plate	41.9
ACX10040	Suspension Shoe	24.2
ACX10046	Allen Key 22mm	0.83
ACX10045	Cap Screw M30 x 90	0.25
ACX10044	Anchor Cone Standard	4.0
ACX10003	Anchor Cone Extractor	2.3
ACX10004	Anchor Cone Washer Plate	2.9



Autoclimb Retracting Trolley Assembly

Code	Description	Wt. (Kg)
ACX10035	Return Trolley/ Assembly Top	94.0

AUTOCLIMB

AUTOCLIMB

R·M·D
KWIKFORM

RAPIDCLIMB

RAPIDCLIMB



Rapidclimb Bracket

Code	Description	Wt. (Kg)
RCX10003	Rapidclimb Bracket	163.44



Rapidclimb Wall Bracket

Code	Description	Wt. (Kg)
RCX10007	Rapidclimb Wall Bracket	10.1
RCX10006	Rapidclimb Safety Pin	0.5
BNU24007	M24 x 55 C/S Bolt S/C Grade 10.9	0.3

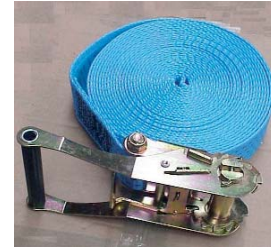


Rapidclimb Plumbing Turnbuckle

Code	Description	Wt. (Kg)
RCX10005	Rapidclimb Turnbuckle	14.75

Rapidclimb Ratchet

Code	Description	Wt. (Kg)
RCX10008	Rapidclimb Ratchet Lashing 12m	2.2
RCX10010	Rapidclimb Ratchet Lashing 24m	3.4



Rapidclimb Suspension Tubes

Code	Description	Wt. (Kg)
RCX10026	Suspension Tube 1.0m	5.08
RCX10027	Suspension Tube 1.5m	6.84
RCX10028	Suspension Tube 2.0m	9.46
RCX10029	Suspension Tube 2.5m	11.64
RCX10024	Suspension Access Transom	10.29
RCX10018	Tube Offset Adapter	1.98



Rapidclimb Adaptor Shoes

Code	Description	Wt. (Kg)
RCX10060	Rapidclimb Maxima Shoe	20.42
RCX10059	Rapidclimb Minima Shoe	23.44





Rapidclimb Cone Accessorize

Code	Description	Wt. (Kg)
RCX10009	Rapidclimb 45kN Cone	1.62
RCX10012	Rapidclimb 45kN Cone Spanner	2.70
RCX10020	Rapidclimb 45kN Cone Retainer	0.116
RCX10021	Rapidclimb Cone Retainer Key	0.05
RCX10022	Rapidclimb 45kN Anchor	1.6
RCX10064	Rapidclimb Anchor Bobbin	3.462

Rapidclimb Guard Rail

Code	Description	Wt. (Kg)
RCX10004	Guard Rail Post	4.8



WEBTIE

WEBTIE

RAPIDCLIMB



Webtie Delta

Code	Description	Wt. (Kg)
PSX10012	Delta Loop 250mm - Webtie	0.68



Webtie Edge Protector

Code	Description	Wt. (Kg)
PSX10014	Edge Protector - Webtie	0.013



Webtie Tension Fork

Code	Description	Wt. (Kg)
PSX10011	Tensioning Fork - Webtie	1.02

All-thread Rod

Code	Description	Wt. (Kg)
TRX20000	Allthread Rod per cut	-
TRX10001	Allthread Rod - 1" Acme per m	3.33
TRX10002	Cut - Acme HT Allthread	-
TRX10012	Allthread Rod - M12 per m	0.76
TRX10016	Allthread Rod - M16 per m	1.0
TRX10020	Allthread Rod - M20 per m	2.10
TRX10024	Allthread Rod - M24 per m	3.35
TRX10030	Allthread Rod - M30 Gd 8.8/mt	-
TRX10034	Allthread Rod - 3/4" Acme/mt	-



Bolts and Nuts

Code	Description	Wt. (Kg)
BNX20030	M20 x 90 Bolt GR 8.8 BZP	0.28
BNU20001	Nut - M20 Hexagon	0.06
BNU20003	Washer - M20 Round	0.01



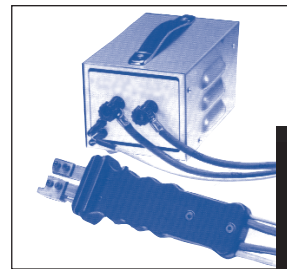
Standard Waler Plate

Code	Description	Wt. (Kg)
BTX10021	Waler Plate Standard - Orange	1.35



Webtie Hot Knife Tool

Code	Description	Wt. (Kg)
PSX10028	Hot Knife Tool 110V - Webtie	5.20
PSX10029	Hot Knife Blade - Webtie	0.02



PARASLIM



Weld Stud and Ferrule

Item	Description	Wt. (Kg)
PSX10001	Weld Stud + Ferrule M24x50	0.25



1500mm Tie

Item	Description	Wt. (Kg)
PSX10002	Tie 1500mm	2.67

Paraslim Beam

Item	Description	Wt. (Kg)
PSX10033	Paraslim 2700mm Soldier Assembly	51.67



Bracket Cast

Item	Description	Wt. (Kg)
PSX10003	Bracket Cast - 35 Angle	2.12
PSX10039	Bracket Cast - 50 Angle	2.12



Stripping Cone

Item	Description	Wt. (Kg)
PSX10006	Stripping Cone	2.2

Bracket Weld-on

Item	Description	Wt. (Kg)
PSX0021	Bracket Weld - 50 Angle	3.09



Stripping Tube

Item	Description	Wt. (Kg)
PSX10027	Stripping Tube - Paraslim 700mm	1.77

Undercarriage Assembly

Item	Description	Wt. (Kg)
PSX10032	Undercarriage Assembly	10.68





Porthole Bearing

Item	Description	Wt. (Kg)
PSX10005	Porthole Bearing	1.53



Turnbuckle

Item	Description	Wt. (Kg)
SSU10016	Turnbuckle 914-1222	8.25



Neoprene Pad

Item	Description	Wt. (Kg)
SSX10047	Super Slim Polypropylene Pad	0.22
BNX10007	M10 x 35 Set Pin GR 8.8 BZP c/sunk	
BNU11001	Nut - M10 Hex Plated	0.08
SSU10029	Washer - Rocking Head	0.02



Flexible Hose

Code	Description	Wt. (Kg)
BTU10001	Flexible Hose 19/25mm 30m lg	7.50
BTU10002	Flexible Hose 25/31mm 30m lg	9.56
BTU10012	Flexible Hose 38/44mm 30m lg	14.50

Jacks

Item	Description	Wt. (Kg)
PSX10038	Flange Jack	4.19.



She Bolt Ratchet Spanner

Item	Description	Wt. (Kg)
HTU10023	Ratchet Spanner She Bolt 3/4"	0.78



Waler Plate Ratchet Spanner

Item	Description	Wt. (Kg)
HTU10024	Ratchet Spanner Waler Plate 3/4"	1.45



Multi Spanner

Item	Description	Wt. (Kg)
HTU10015	Multi Spanner 3/4"	1.48





Anchor Screw Grease

Item	Description	Wt. (Kg)
OCU10002	Anchor Screw Grease 3Kg	3.00



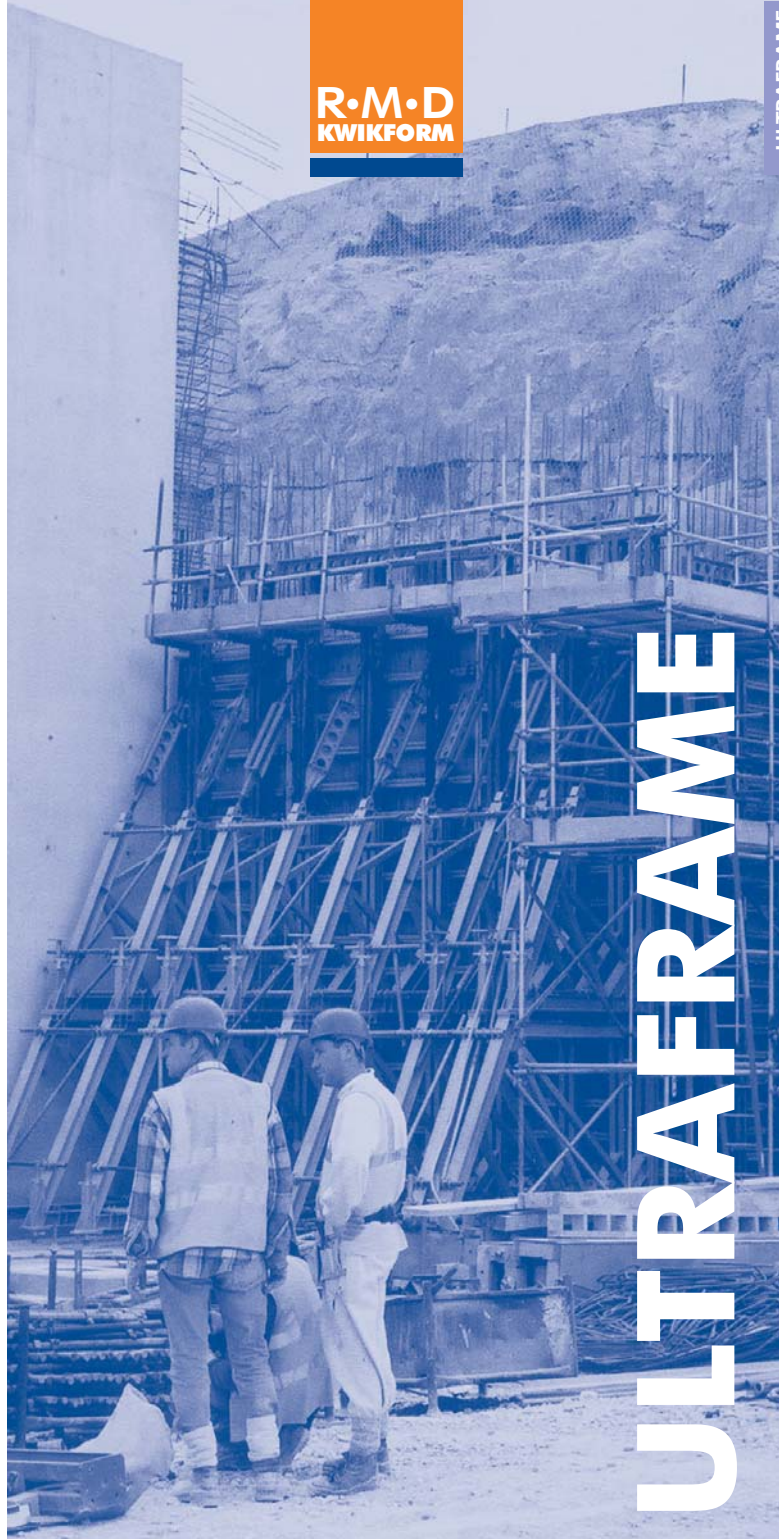
Foamfill

Item	Description	Wt. (Kg)
OCU10028	Foamfill 750ml Can	1.00



Tie Bar Protector

Item	Description	Wt. (Kg)
PSX10018	Tie Bar Protector	0.01



ULTRAFRAME



Frames

Code	Description	Wt. (Kg)
UFU10001	Ultraframe 1	420.00
UFU10002	Ultraframe 2	522.22
UFU10003	Ultraframe 3	605.54



Tie Beam

Code	Description	Wt. (Kg)
UFU10009	Tie Beam	37.26



Rear Jack

Code	Description	Wt. (Kg)
UFU10007	Jack - Rear	32.29



Levelling Jack

Code	Description	Wt. (Kg)
UFU10006	Jack - Levelling	7.76

Stripping Jack

Code	Description	Wt. (Kg)
UFU10008	Jack - Stripping	9.21



Wheel Unit

Code	Description	Wt. (Kg)
UFU10010	Wheel Unit	18.72



Anchor Jig

Code	Description	Wt. (Kg)
UFU10004	Anchor Jig	0.68



Anchor Plate

Code	Description	Wt. (Kg)
UFU10005	Anchor Plt	3.7





Wing Nut

Code	Description	Wt. (Kg)
UFU10015	Tie Wing Nut - Ultrarapid	6.05
To suit 26mm dia. Bar Tie		



Cone Bolt

Code	Description	Wt. (Kg)
UFU10013	Bolt - Tie Cone Ultrarapid	2.5
26mm dia.		



Bar Tie 1350

Code	Description	Wt. (Kg)
UFU10011	Bar Tie - Ultrarapid 1350mm	6.05
26mm dia.		



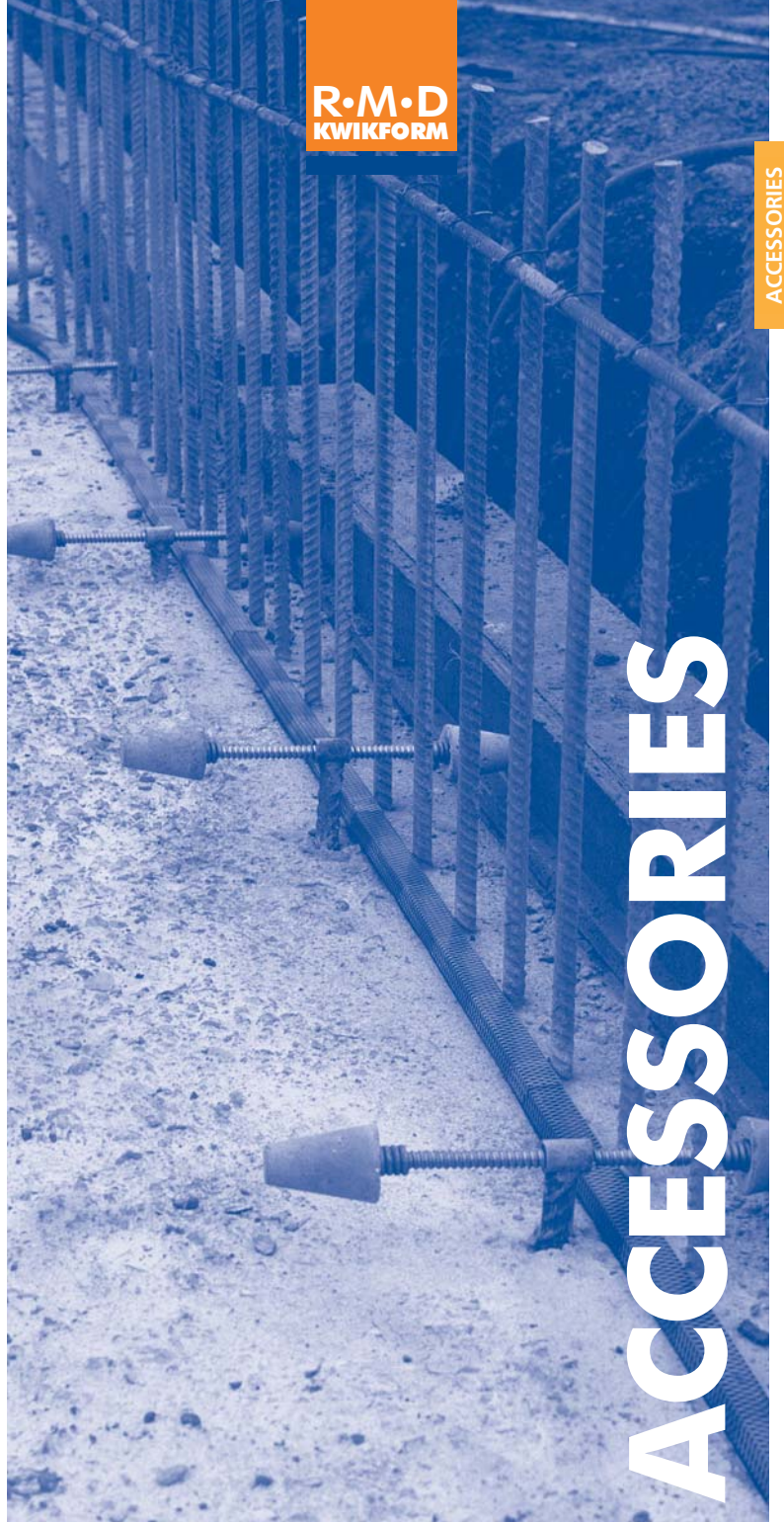
Waler Plate

Code	Description	Wt. (Kg)
UFU10014	Tie Waler Plt - Ultrarapid	2.59

Plastic Tube

Code	Description	Wt. (Kg)
UFU10012	Plastic Tube - Ultrarapid 320mm	0.09
To suit 26mm dia. Bar Tie		





R·M·D
KWIKFORM

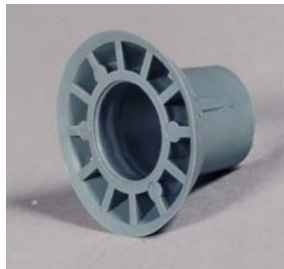
ACCESSORIES

ACCESSORIES



R/Tie Plastic Tube - 2m

Code	Inside/Outside Dia	Pack
FAU10075	Plas Tube 32/38mm x 2m	Ind.
BTX10009	Plas Tube Hi load 26/30mm x 2m	Ind.
BTX10019	Plas Tube Hi load 22/26mm x 2m	Ind.



R/Tie Plastic Cones

Code	Inside/Outside Dia	Pack
BTU10003	Reusable Cone 15mm	Ind.
BTU10008	Plas Cone	Ind.
BTX10008	Plas Cone - Hi Load 26 Dia	Ind.
BTX10018	Plas Cone 10mm	Ind.
BTX10022	Tieseal Cone 26 x 50	Ind.
FAU10061	Cone - Kickerless 200mm Wall	Ind.
FAU10074	Cone - Plastic 32mm Dia Tube	Ind.
FAU10092	Tieseal Cone 22 x 50mm	Ind.
FAU10093	Tieseal Cone Extractor	Ind.



RMD Aquafix Stoppers

Code	For Tube Dia	Pack
FAU10020	20mm	Ind.
FAU10021	22mm	Ind.
FAU10022	26mm	Ind.
FAU10023	32mm	Ind.

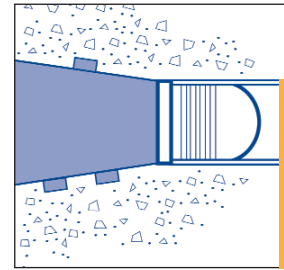


R/Tie Flexible Hose

Code	Inside/Outside Dia	Pack
BTU10001	19/25mm	Per 30m
BTU10002	25/31mm	Per 30m
BTU10012	Flexible Hose 38/44	Per 30m

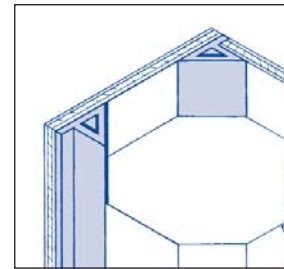
Tieseal

Code		Pack
OCU10036	Tieseal	1 litre
OCU10037	Tieseal Applicator	Ind.



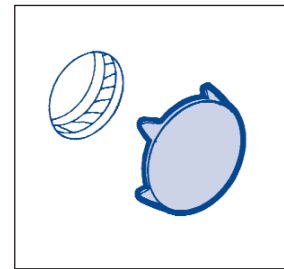
**Chamfer Edge Profiles without
flange length - 2.5m**

Code	Height	Pack
FAU10008	Chamfer - 25mm x 2.5m	Ind.
FAU10110	Chamfer - 20mm x 2.5m	Ind.
FAU10135	Chamfer Edge Profile 20mm x 2.5m	Ind.
FAU10136	Chamfer Edge Profile 30mm x 2.5m	Ind.



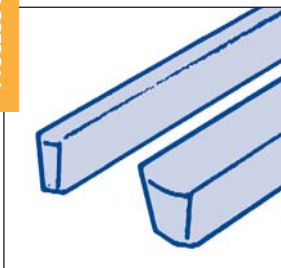
**Chamfer Edge Profiles with flange
length - 2.5m**

Code	Height	Pack
FAU10001	11mm	Ind.
FAU10002	15mm	Ind.
FAU10004	20mm	Ind.
FAU10007	25mm	Ind.
FAU10011	30mm	Ind.



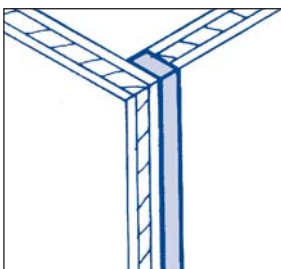
Shutter Patch

Code	Diameter	Pack
FAU10013	45mm	100



Sealant Void Formers

Code	Type	Pack
FAU10006	20mm Half Jt. F'mr	3m L'gth
FAU10010	25mm Half Jt. F'mr	3m L'gth
FAU10005	20mm Full Jt. F'mr	3m L'gth
FAU10009	25mm Full Jt. F'mr	3m L'gth

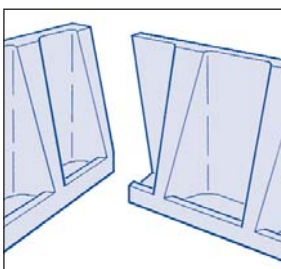


Premium Groutcheck Tape

Code	Length x Width	Pack
FAU10080	33m x 50mm	Ind.
FAU10042	50mm x 33m	Ind.
FAU10047	75mm x 33m	Ind.

Foam Tape

Code	Length x Width	Pack
OCU11021	12m x 12mm	Ind.

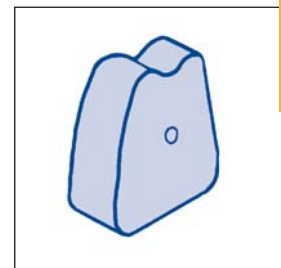


Beamform

Code	Dimensions
BEU10110	1000 x 750mm
BEU10109	1000 x 700mm
BEU10108	1000 x 650mm
BEU10107	1000 x 600mm
BEU10106	1000 x 550mm
BEU10105	1000 x 500mm
BEU10104	1000 x 450mm
BEU10103	1000 x 400mm
BEU10102	1000 x 350mm

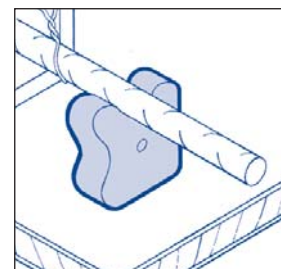
Single Cover Flat Base Spacers

Code	Cover	Pack
SPU10015	20mm	1000
SPU10017	25mm	500
SPU10019	30mm	250
SPU10024	40mm	250
SPU10025	50mm	200
SPU10026	60mm	200
SPU10027	75mm	100



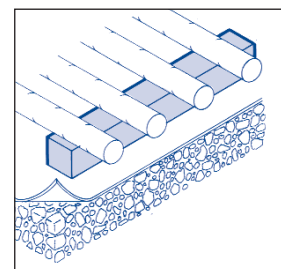
Double Cover Spacers

Code	Cover	Pack
SPU10016	25/30mm	500
SPU10018	30/40mm	250
SPU10020	35/45mm	250
SPU10022	40/50mm	200



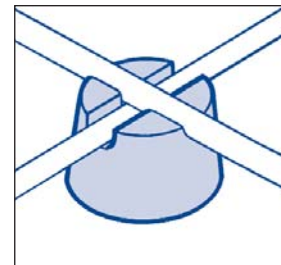
Triple Cover Spacers

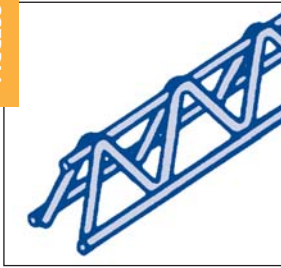
Code	Cover	Pack
SPU10021	35/40/50mm	200



Heavy Duty Bars

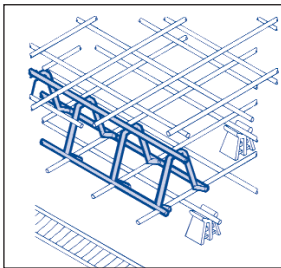
Code	Size	Pack
SPU10034	30 x 30mm	10
SPU10035	40 x 40mm	10
SPU10036	50 x 50mm	10





Mesh Spacers

Code	Cover	Pack
SPU10023	40/50mm	100



Wire Spacers
2m Continuous Ho

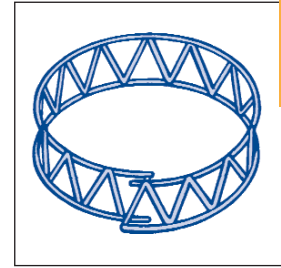
Code	Height	Pack
SPU10053	50mm	Ind.
SPU10054	60mm	Ind.
SPU10055	75mm	Ind.
SPU10056	90mm	Ind.
SPU10046	105mm	Ind.
SPU10047	120mm	Ind.
SPU10048	135mm	Ind.
SPU10049	150mm	Ind.
SPU10050	165mm	Ind.
SPU10051	180mm	Ind.
SPU10052	200mm	Ind.

Wire Spacers
1m Heavy Duty Continuous Ho

Code	Height	Pack
SPU10044	75mm	Ind.
SPU10045	90mm	Ind.
SPU10037	105mm	Ind.
SPU10038	120mm	Ind.
SPU10039	135mm	Ind.
SPU10040	150mm	Ind.
SPU10041	165mm	Ind.
SPU10042	180mm	Ind.
SPU10043	200mm	Ind.

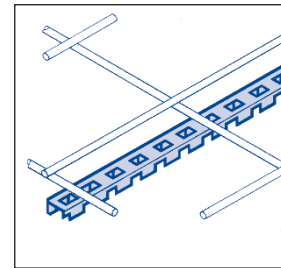
Circular Wire Spacers

Code	Height	Pack
SPU10032	80mm	Ind.
SPU10033	90mm	Ind.
SPU10028	105mm	Ind.
SPU10029	120mm	Ind.
SPU10030	135mm	Ind.
SPU10031	150mm	Ind.



Plastic Spacers

Code	Cover	Pack
SPU10012	25mm	Per 2.5m
SPU10013	30mm	Per 2.5m
SPU10014	50mm	Per 2.5m

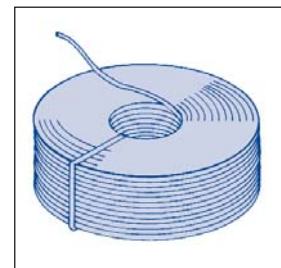


Tying Wire

Soft Black Annealed - 16 SWG		
Code	Coil size	
SPU10001	20 Kg	
SPU10073	2 Kg	

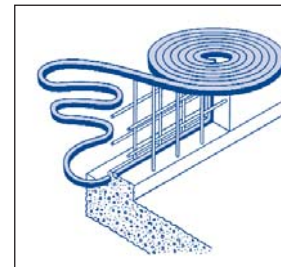
Tying Wire

Stainless Steel - 18 SWG		
Code	Coil size	
SPU10002	20 Kg	



RMD Kwikform Waterstop

Code	Cross Section	Pack
FAU10121	Waterstop 10x15 (nom)	6mt rolls 12 pack
FAU10095	Waterstop 20x25 (nom)	30m linear m
FAU10096	Waterstop 20x25 (nom)	5m linear m coil





Circular Column Shutters

Code	Length x Dia	Pack
Special	3200 x 300mm	Ind.
Special	3200 x 350mm	Ind.
Special	3200 x 400mm	Ind.
Special	3200 x 450mm	Ind.
Special	3200 x 500mm	Ind.
Special	3200 x 600mm	Ind.
Special	4000 x 300mm	Ind.
Special	4000 x 350mm	Ind.
Special	4000 x 400mm	Ind.
Special	4000 x 450mm	Ind.
Special	4000 x 500mm	Ind.
Special	4000 x 600mm	Ind.

Revofix

Code		Pack
OCU10008	Revofix	30 linear m

Bolts

Code		Pack
FAU10048	Bolt - HSB Excaliber 6 x 50	Ind.
FAU10049	Bolt - HSB Excaliber 8 x 100	Ind.
FAU10050	Bolt - HSB Excaliber 10 x 75	Ind.
FAU10051	Bolt - HSB Excaliber 12 x 100	Ind.
FAU10052	Bolt - HSB Excaliber 12 x 150	Ind.
FAU10053	Bolt - HSB Excaliber 12 x 75	Ind.
FAU10054	Bolt - HSB Excaliber 16 x 100	Ind.
FAU10055	Bolt - HSB Excaliber 16 x 150	Ind.
FAU10056	Bolt - HSB Excaliber 20 x 200	Ind.
FAU10123	Excaliber Bolt HSB 08/50	Ind.
FAU10124	Excaliber Bolt HSA 08/50	Ind.
FAU10137	Bolt - HSB Excaliber 8 x 75	Ind.

Propbolt 12

Code		Pack
FAU10082	Propbolt 12	50

Propbolt 25R

Code		Pack
FAU10084	Propbolt 25R	12
FAU10083	Propbolt 25R Exp shield	25

Kickerless Fixings

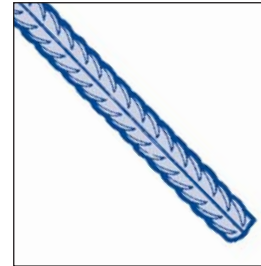
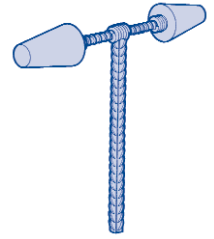
Code		Pack
FAU10063	Support Leg	Ind.
FAU10061	Cone 200mm Wall	Ind.
FAU10064	T Bar Kick/less Fixing 125mm	Ind.
FAU10065	T Bar Kick/less Fixing 150mm	Ind.
FAU10066	T Bar Kick/less Fixing 200mm	Ind.
FAU10067	T Bar Kick/less Fixing 250mm	Ind.
FAU10068	T Bar Kick/less Fixing 3.0m	Ind.
FAU10069	T Bar Kick/less Fixing 300mm	Ind.
FAU10070	T Bar Kick/less Fixing 400mm	Ind.
FAU10071	T Bar Kick/less Fixing 500mm	Ind.
FAU10062	Concrete end caps	Ind.

1200 G Insert

Code	Thread Dia/Length	Pack
FAU10128	M12 x 40mm BZP	10
FAU10129	M16 x 54mm BZP	10
FAU10130	M20 x 69mm BZP	10
FAU10131	M24 x 78mm BZP	10
FAU10098	M30 x 103mm BZP	10
FAU10033	M36 x 125mm BZP	10

995 DG Insert

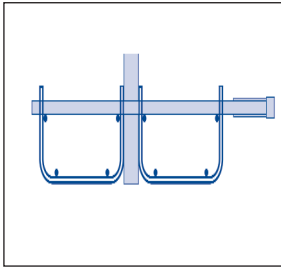
Code	Thread Dia/Length	Pack
FAU10014	M12 x 55mm	10
FAU10015	M16 x 75mm	10
FAU10016	M20 x 90mm	10
FAU10017	M24 x 100mm	10
FAU10018	M30 x 135mm	10





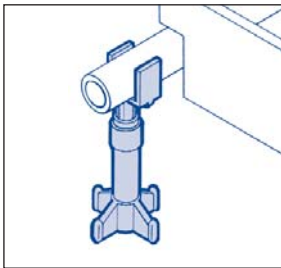
Lifting Loops

Code	Thread Dia	Pack
FAU10086	M12	Ind.
FAU10087	M16	Ind.
FAU10088	M20	Ind.
FAU10089	M24	Ind.
FAU10097	M30	Ind.
FAU10132	M36	Ind.



Dowel Bar Cages

Expansion Joints	
Made to order. Length = 2.4m	
2 lengths req'd per metre run of joint.	
Specify dowel bar height when ordering.	
Code	Slab Thickness
FAU10115	150/180mm
FAU10116	190/230mm
FAU10117	240/280mm

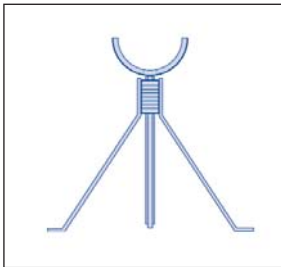


Dowel Bar Cages Contraction Joints

Expansion Joints	
Made to order. Length = 2.4m	
2 lengths req'd per metre run of joint.	
Specify dowel bar height when ordering.	
Code	Slab Thickness
FAU10118	150/180mm
FAU10119	190/230mm
FAU10120	240/280mm
FAU10032	Plastic Sleeve 75mm

Screed Chairs - Plastic

Code	Component	Pack
SPU10007	Saddle - Adjustable	Ind.
SPU10006	Collar - Adjustable	Ind.
SPU10008	Base	Ind.

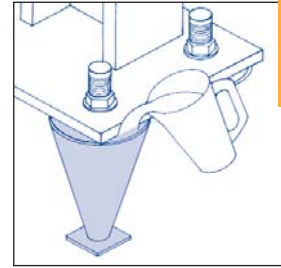


SCREED CHAIRS - METAL

Code	Base Height	Pack
SPU10009	65mm	Ind.
SPU10010	90mm	Ind.
SPU10011	140mm	Ind.
Stirrup		
Code	Thread Length	Pack
SPU10003	60mm	Ind.
SPU10004	85mm	Ind.
SPU10005	140mm	Ind.

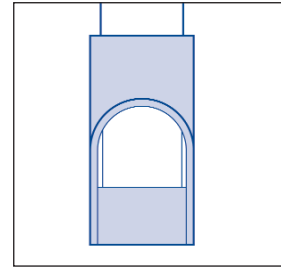
Conical Bolt Boxes

Code	Length/Dia-Dia.	Pack
FAU10030	229/70-20mm	Ind.
FAU10024	305/92-20mm	Ind.
FAU10025	380/108-25mm	Ind.
FAU10026	457/114-30mm	Ind.
FAU10027	534/118-30mm	Ind.
FAU10028	610/133-30mm	Ind.
FAU10029	762/133-30mm	Ind.



Expansion Dowel Bar Caps

Code	Bar Dia x o/a L'gth	Pack
FAU10073	12 x 125mm	Ind.
FAU10038	16 x 125mm	Ind.
FAU10039	20 x 125mm	Ind.
FAU10040	25 x 125mm	Ind.
FAU10041	32 x 125mm	Ind.



Expansion Dowel Bar Sleeves

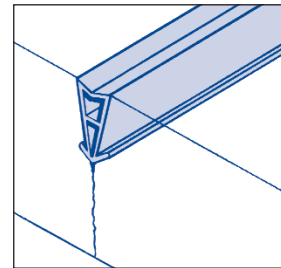
Code	Bar Dia x o/a L'gth	Pack
FAU10043	16 x 200mm	Ind.
FAU10044	20 x 300mm	Ind.
FAU10045	25 x 300mm	Ind.
FAU10046	32 x 375mm	Ind.

Clearcrack 1 Part Crack

Inducer Length 5m		
Code	Depth x Width	Pack
FAU10031	50 x 10mm	Ind.

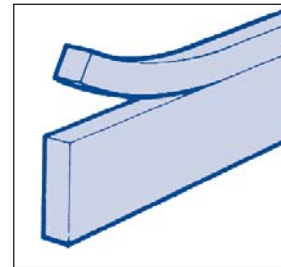
2 Part Crack Inducer

Length 5m		
Code	Depth x Width	Pack
FAU10033	50 x 10mm	Ind.



Isothene Joint Filler

Code	Depth x Thickness	Pack
FAU10134	100 x 12mm	10m coil
FAU10126	175 x 12mm	10m coil
FAU10127	200 x 12mm	10m coil
FAU10057	150 x 20mm	2.2m length
FAU10059	175 x 20mm	2.2m length
FAU10058	200 x 20mm	2.2m length



CHEMICALS

FORMWORK TREATMENTS

RMD Chemical Release Agent

A blend of fatty acids in an evaporative carrier which when applied to a form face reacts with free limes in concrete to produce complex soaps at the interface of the concrete and formwork to provide the optimum in release, surface finish and formwork protection.

Code	Quantity	Pack
OCU11002	25 litre	Ind.
OCU11001	210 litre	Ind.

RMD Mould Oil

A blend of medium viscosity non-staining release oils highly active surfactants which are extremely effective in promoting displacement of air pockets at the formwork/concrete interface and a high quality finish.

Code	Quantity	Pack
OCU11004	25 litre	Ind.
OCU11003	210 litre	Ind.

Plastic Formwork Sealer

A single pack moisture curing polyurethane sealing coat which will increase formwork life and improve concrete appearance by preventing migration of wood sugars into concrete.

Code	Quantity	Pack
OCU10030	5 litre	Ind.
OCU10045	210 litre	Ind.

Ply Filler Pack

A rapid setting twin pack polyester resin based system which is ideal for repairing surface damage and irregularities on most types of formwork in common use.

Code	Quantity	Pack
OCU10032	2.0 Kg	Ind.
OCU10033	8.0 Kg	Ind.

CONCRETING AIDS

Adobreak

A bitumen based compound which will harden on expansion and contraction joint dowel bars as a thick film. After casting of concrete will allow dowel bars to completely break bond with concrete.

Code	Quantity	Pack
OCU11017	5 litre	Ind.
OCU11016	25 litre	Ind.

CONCRETE CURING COMPOUNDS

Adocure WW

Adocure WW (water-based) is recommended where the concrete surface is to receive a subsequent treatment, e.g. screeding, painting, plastering, etc. A resin-based product (Adocure Standard, Super or Super Aluminised) is suggested where a high performance membrane is required for slabs, roads, runways, etc. Resin-based compounds are not suitable if the concrete surface is going to receive a subsequent finish or treatment.

Code	Quantity	Pack
OCU11012	25 litre	Ind.
OCU11011	210 litre	Ind.

Adocure WW/T

A tinted version of Adocure WW to assist in the identification of treated areas. The tint disappears within a few days of exposure to natural light.

Code	Quantity	Pack
OCU11010	25 litre	Ind.
OCU11009	210 litre	Ind.

Adocure Standard

Gives a curing efficiency of 75%. An aluminised version is also available.

Code	Quantity	Pack
OCU11008	25 litre	Ind.
OCU11007	210 litre	Ind.

Adocure Super

Gives a curing efficiency of 90%. An aluminised version is also available.

Code	Quantity	Pack
OCU11027	25 litre	Ind.
OCU11006	210 litre	Ind.

Adocure Sealer

A double function product, firstly a curing membrane and secondly to act as an in depth sealer for hardened concrete, rendering the surface dustproof and hardwearing.

WATERPROOFING AND SURFACE TREATMENTS

Adocoat

Where concrete is buried underground a protective coating is frequently specified in order to prevent the ingress of water and potential subsequent deterioration. Adocoat is designed to water-proof concrete sections whether above ground or below ground. The combination of latex and bitumen in Adocoat produce a material which is resistant to puncturing from site operations yet flexible enough to accommodate a degree of movement.

Code	Quantity	Pack
OCU11028	25 litre	Ind.
OCU11020	210 litre	Ind.

SPECIAL PURPOSE MORTARS AND GROUTS

Adopack and AdogROUT

Where it is essential to completely fill the gaps between structure and fittings, a liquid grout is often specified. Adopak can achieve strengths greater than 60N/mm² after 28 days and is ideal for grouting between stanchion bases, holding down bolts and dowel bars. Where a permanent high bond is required, an expanding grout such as AdogROUT may be preferred.

Code	Quantity	Pack
OCU11023	25 Kg	Ind.
OCU11022	0.21 Kg	Ind.

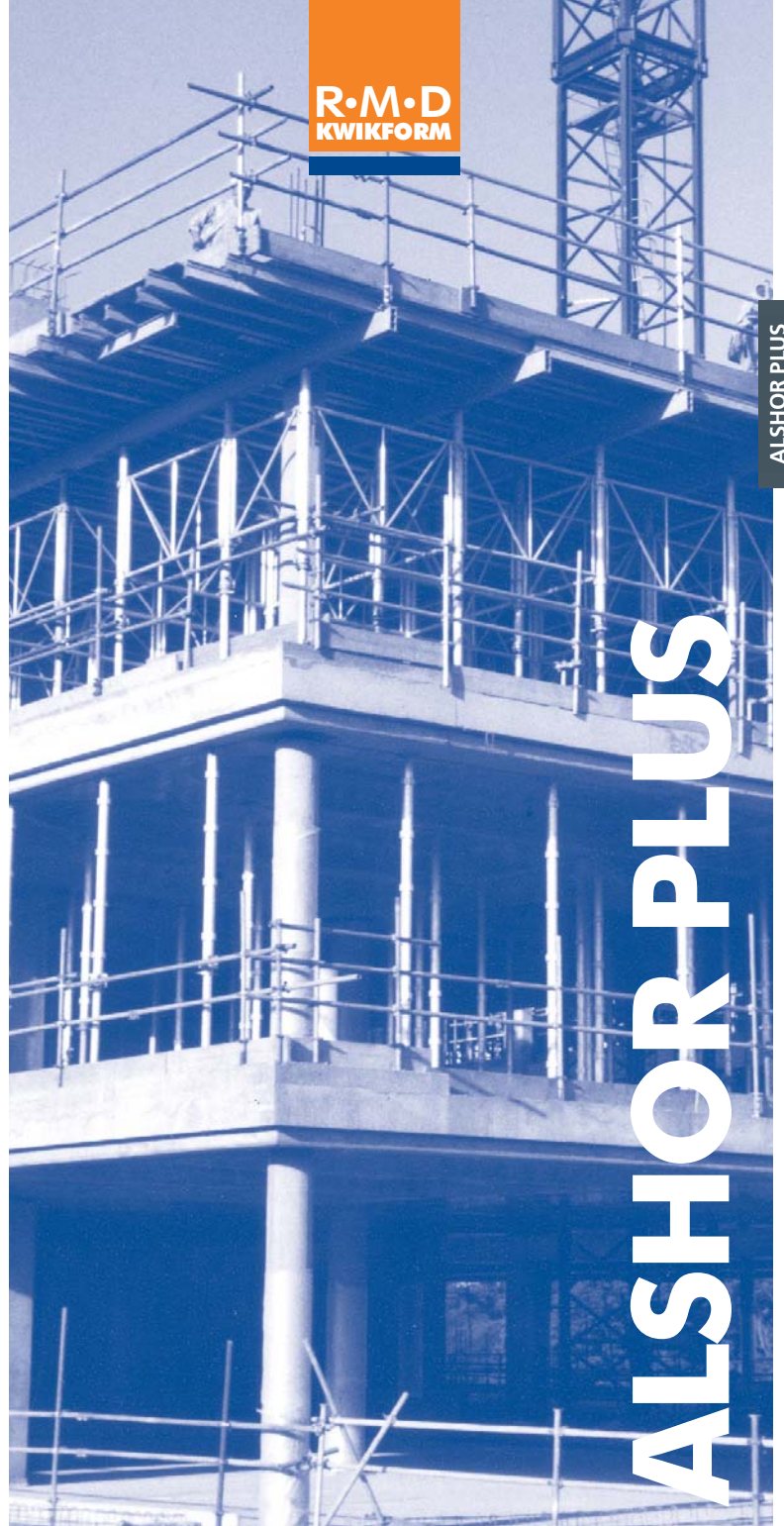
CLEANING AGENT

Adoclean

A blend of inorganic acids for the removal of cementitious contamination and rust from a wide range of surfaces.

Code	Quantity	Pack
OCU11018	25 litre	Ind.

FULL CHEMICAL RANGE AVAILABLE





Legs

Code	Description	Wt. (Kg)
ASX31500	Alshor Plus Leg 1500mm	7.47
ASX32000	Alshor Plus Leg 2000mm	9.97
ASX33000	Alshor Plus Leg 3000mm	14.97
ASX34000	Alshor Plus Leg 4000mm	19.96
ASX10013	Alshor Plus Spigot 6mm	2.19



ASX10013

Jacks

Code	Description	Wt. (Kg)
ASX10012	Alshor Plus Jack 200 -1250mm	15.5
ASX10030	Alshor Plus Jack 120 - 750	11.1
ASX10029	Alshor Plus Jack Spanner	4.9



ASX10012

Tripod

Code	Description	Wt. (Kg)
ASX10060	Alshor Leg Tripod	11.0



Head Plates

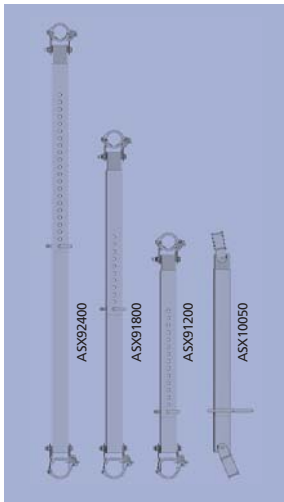
Code	Description	Wt. (Kg)
ASX10023	Alshor Plus U Plate 270 x 220 x 8	4.0
ASX10015	Alshor Plus U Head 220w x 10mm	4.73



ASX10015

Braces

Code	Description	Wt. (Kg)
ASX91200	Alshor Plus Leg Braces 1200mm	10.536
ASX91800	Alshor Plus Leg Braces 1800mm	11.89
ASX92400	Alshor Plus Leg Braces 2400mm -3000mm	13.96
ASX10050	Alshor Plus Leg to Leg Brace	14.80



Base Plates

Code	Description	Wt. (Kg)
ASX10011	Alshor Plus Base 10mm	3.63
ASX10020	Alshor Plus Pin - Straight	0.32



ASX10011



Alshor Plus Trolley

Code	Description	Wt. (Kg)
ASX10014	Alshor Plus 3 Wheeled Trolley Range = 1100 - 2160mm	81.01
ASX10062	Alshor Plus 4 Wheeled Trolley Range = 900 - 1900mm	98.00
ASX10061	Frame Lifting Unit	4.74
SFX10008	Castor Wheel 203	5.0



Castor Unit

Code	Description	Wt. (Kg)
ASX10038	Alshor Plus Castor Unit	37.4
ASX10039	Alshor Plus Castor Unit Handle	8.48

Advancing Handrails

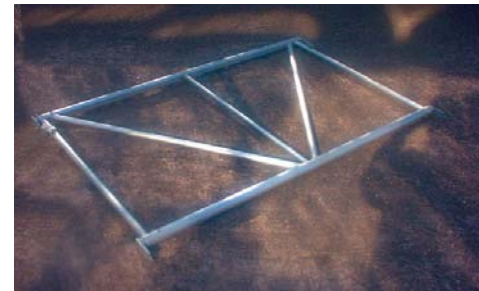
Code	Description	Wt. (Kg)
ASX10057	Alshor Plus Advancing Handrail 1200mm	13.35
ASX10058	Alshor Plus Advancing Handrail 1800mm	15.69



ASX71800

Guardrails

Code	Description	Wt. (Kg)
ASX71200	Alshor Plus Guardrail 1200mm	3.17
ASX71800	Alshor Plus Guardrail 1800mm	4.09
ASX72400	Alshor Plus Guardrail 2400mm	4.82
ASX73000	Alshor Plus Guardrail 3000mm	5.81



2400mm

Frames

Code	Description	Wt. (Kg)
ASX41200	Alshor Plus Frame 1200mm	8.78
ASX41800	Alshor Plus Frame 1800mm	12.3
ASX42400	Alshor Plus Frame 2400mm	14.6
ASX43000	Alshor Plus Frame 3000mm	16.94

Drop Beam Bracket

Code	Description	Wt. (Kg)
ASX10040	Alshor Plus Drop Beam Bracket	1.4



ALSHOR PLUS

Platform

Code	Description	Wt. (Kg)
ASX10043	Alshor Platform 1800 x 300mm	9.38
ASX10044	Alshor Platform 1800 x 505mm	12.54
ASX10045	Alshor Platform 1800 x 600mm	12.78
ASX10046	Alshor Platform 2400 x 300mm	21.11
ASX10047	Alshor Platform 2400 x 505mm	16.9
ASX10048	Alshor Platform 2400 x 600mm	16.75



Ladders

Code	Description	Wt. (Kg)
ASX51000	Alshor Plus Ladder 1000mm	4.08
ASX51500	Alshor Plus Ladder 1500mm	5.5
ASX52000	Alshor Plus Ladder 2000mm	6.96
ASX50001	Alshor Plus Bottom Ladder	5.55
ASX50002	Alshor Plus Starter Ladder	5.95



'C' Frame

Code	Description	Wt. (Kg)
ASX10041	'C' Frame Assembly	1020.0
ASX10042	'C' Frame Chain Assembly	91.0

Limited stock of these items.



ALSHOR PLUS

Ledgers

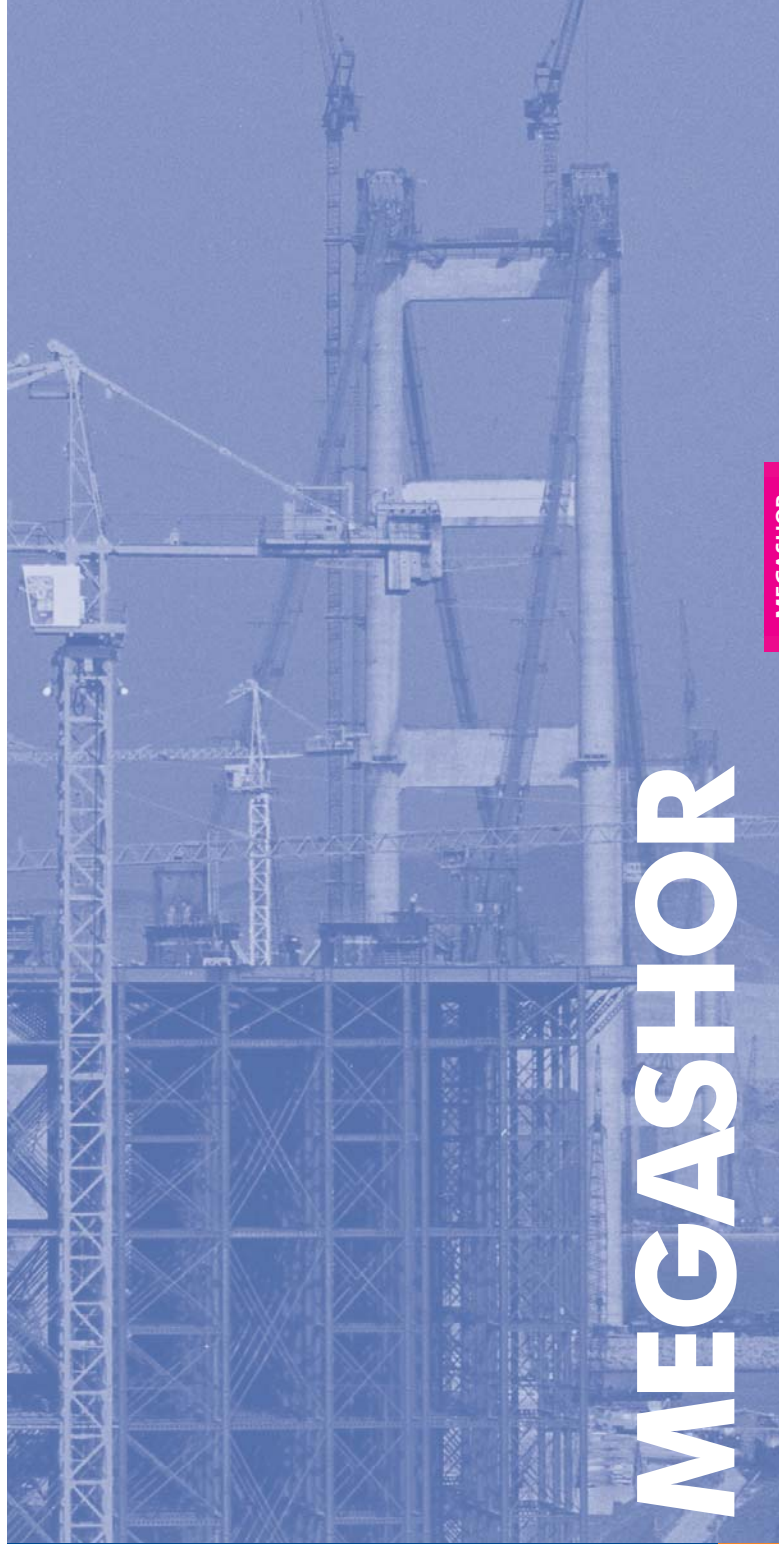
Code	Description	Wt. (Kg)
ASX80900	Alshor Plus Ledger 900mm	4.03
ASX81200	Alshor Plus Ledger 1200mm	4.92
ASX81800	Alshor Plus Ledger 1800mm	6.67
ASX82400	Alshor Plus Ledger 2400mm	8.43
ASX83000	Alshor Plus Ledger 3000mm	10.17



Board Bearers

Code	Description	Wt. (Kg)
ASX61200	Alshor Plus Board Bearer 1200mm	5.72
ASX61800	Alshor Plus Board Bearer 1800mm	7.86
ASX62400	Alshor Plus Board Bearer 2400mm	10.0
ASX63000	Alshor Plus Board Bearer 3000mm	15.04





MEGASHOR

Megashor Legs

Code	Description	Wt. (Kg)
MSX15400	Megashor Leg 5400mm	301.54
MSX14500	Megashor Leg 4500mm	253.7
MSX12700	Megashor Leg 2700mm	159.18
MSX11800	Megashor Leg 1800mm	111.90
MSX10900	Megashor Leg 900mm	64.62
MSX10450	Megashor Leg 450mm	44.58
MSX10270	Megashor Leg 270mm	29.92
MSX10090	Megashor Leg 90mm	21.70
MSX10012	Megashor End Plate	9.4

Superslim Soldier Ledgers

Code	Description	Wt. (Kg)
SSX13600	Superslim Soldier 3600mm	72.18
SSX12700	Superslim Soldier 2700mm	55.38
SSX11800	Superslim Soldier 1800mm	38.8
SSX10900	Superslim Soldier 900mm	22.00
SSX10720	Superslim Soldier 720mm	18.74
SSX10540	Superslim Soldier 540mm	15.24
SSX10360	Superslim Soldier 360mm	11.98
SSX10090	Superslim Soldier 90mm	7.32
SSX10040	Superslim End Plate 15mm	2.91

Fixed and Adjustable Braces

Code	Description	Wt. (Kg)
MSX10003	Flat Brace 60x8mm per m	3.69 per m
MSU10001	Flat Brace 60x8mm Alteration	-
MSX10006	Vernier Brace Long Outer Galv	10.99
MSX10005	Vernier Brace Long Inner Galv	11.51
MSX10034	Vernier Brace Short Outer Galv	7.59
MSX10033	Vernier Brace Short Inner Galv	5.31

**AWL: When attached to Megashor Legs = 40 kN
(80 kN per pair)**





Screw Jack

Code	Description	Wt. (Kg)
MSX10011	Megashor Jack 410 - 620mm	59.10



Brace Plate

Code	Description	Wt. (Kg)
MSU10002	Megashor Brace Plate	60.5



Hydraulic Unit

Code	Description	Wt. (Kg)
MSX10017	Megashor Hydraulic Unit	131.5



Jack Plate

Code	Description	Wt. (Kg)
MSX10021	Megashor Jack Plate	26.3

Header Beams

Code	Description	Wt. (Kg)
MSX10010	Megashor Header Beam 3300mm	674.3
MSX10009	Megashor Header Beam 950mm	169.4

Other sizes also available.



Rocking Head

Code	Description	Wt. (Kg)
MSX10026	Megashor Rocking Head 180mm	46.12

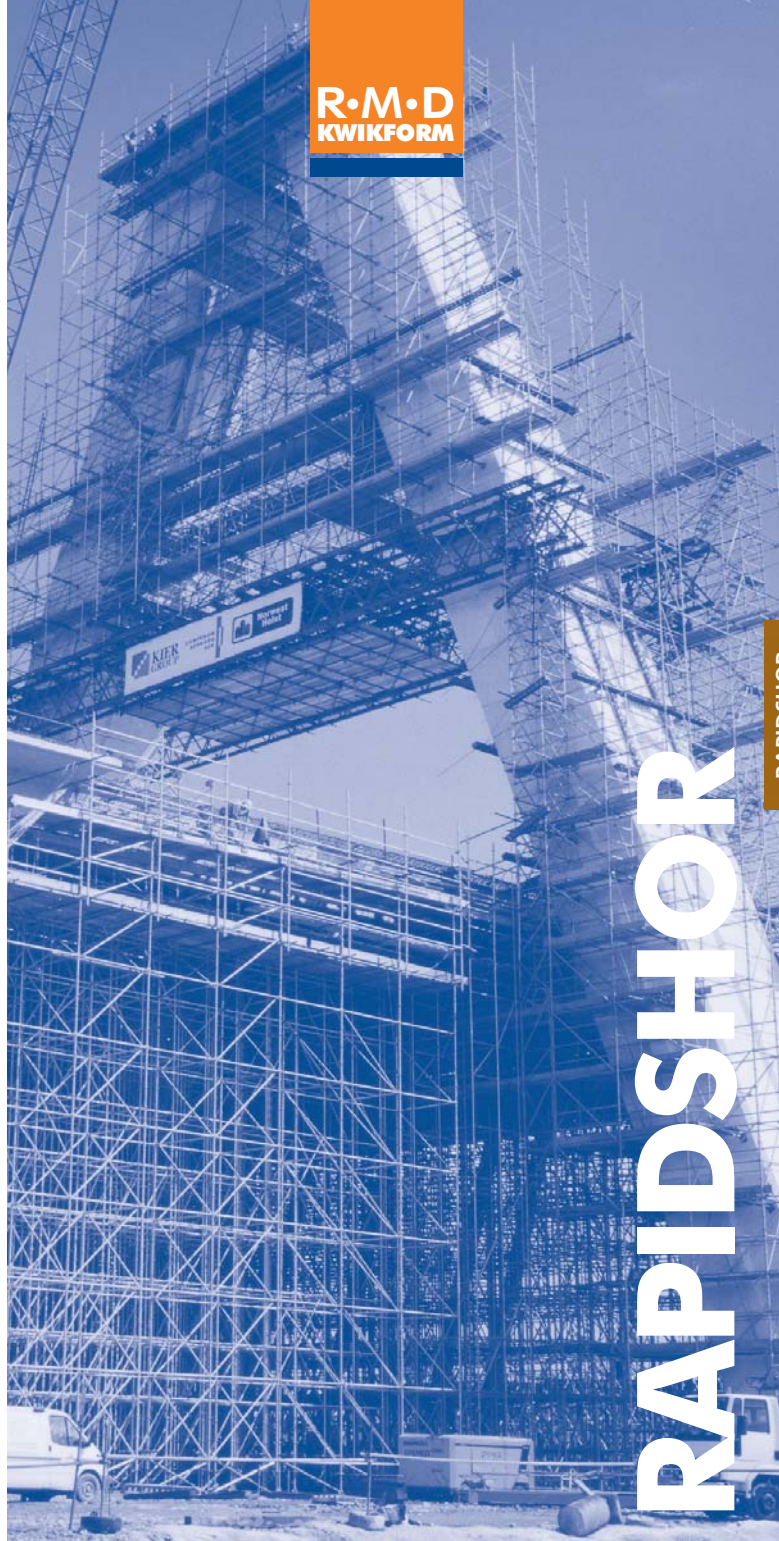
Nuts and Bolts

Code	Description	Wt. (Kg)
BNU20011	Bolt/Nut - M20 x 60 Gr 8.8	0.28
BNU20005	Bolt/Nut - M20 x 40 Gr 8.8	0.24
BNU16007	Set Pin - M16 x 40 HT	0.08
BNU16001	Nut - M16 Hexagon Pltd	0.03
BNU12009	Set Pin - M12x40 Gr 8.8 Pltd	0.2



MEGASHOR

MEGASHOR



RAPIDSHOR

Standards

Code	Description	Wt. (Kg)
RSX11500	Rapidshor Standard 1500mm	8.32
RSX12500	Rapidshor Standard 2500mm	15.09
RSX41000	Rapidshor Standard OE 1000mm	5.39
RSX41500	Rapidshor Standard OE 1500mm	8.02
RSX42000	Rapidshor Standard OE 2000mm	10.78
RSX42500	Rapidshor Standard OE 2500mm	13.47
RSX10005	Rapidshor Joint Sleeve - Standard	1.53
RSX10010	Rapidshor Joint Sleeve - Base Plate	1.14
RSX10009	Rapidshor Sleeve Clip	0.10



Ledgers

Code	Description	Wt. (Kg)
RSX23000	Rapidshor Ledger 3000mm	11.77
RSX22400	Rapidshor Ledger 2400mm	9.63
RSX21800	Rapidshor Ledger 1800mm	7.49
RSX21500*	Rapidshor Ledger 1500mm	6.43
RSX21200	Rapidshor Ledger 1200mm	5.36
RSX20900	Rapidshor Ledger 900mm	4.29
RSX20600	Rapidshor Ledger 600mm	3.22
RSX20300*	Rapidshor Ledger 300mm	2.16

* Sale only in the UK.

Adjustable Jack

Code	Description	Wt. (Kg)
RSX10004	Rapidshor Jack (Range: 25 - 540mm)	6.12





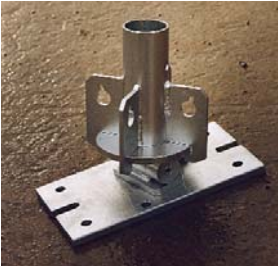
Rapidshor Heads

Code	Description	Wt. (Kg)
RSX10003	Rapidshor Brace Head 182 Wide	6.65
RSX10007	Rapidshor Head - Tilt 237mm	13.08
RSX10001	Rapidshor Forkhead 220 wide	5.73



Base and Tilt Base

Code	Description	Wt. (Kg)
RSX10002	Rapidshor Base 165mm	3.06
RSX10006	Rapidshor Base - Tilt	7.65



Fixed Braces

Code	Description	Wt. (Kg)
RSX31009	Rapidshor Brace - 1000x900	4.85
RSX31012	Rapidshor Brace - 1000x1200	5.43
RSX31015*	Rapidshor Brace - 1000x1500	6.11
RSX31018	Rapidshor Brace - 1000x1800	7.98
RSX31024	Rapidshor Brace - 1000x2400	9.88
RSX31512	Rapidshor Brace - 1500x1200	6.55
RSX31515	Rapidshor Brace - 1500x1500	8.31
RSX31518	Rapidshor Brace - 1500x1800	9.06
RSX31524	Rapidshor Brace - 1500x2400	12.85
RSX32012	Rapidshor Brace - 2000x1200	9.17
RSX32018	Rapidshor Brace - 2000x1800	12.37
RSX32024	Rapidshor Brace - 2000x2400	14.19

* This brace also fits a 1500 x 900 bay

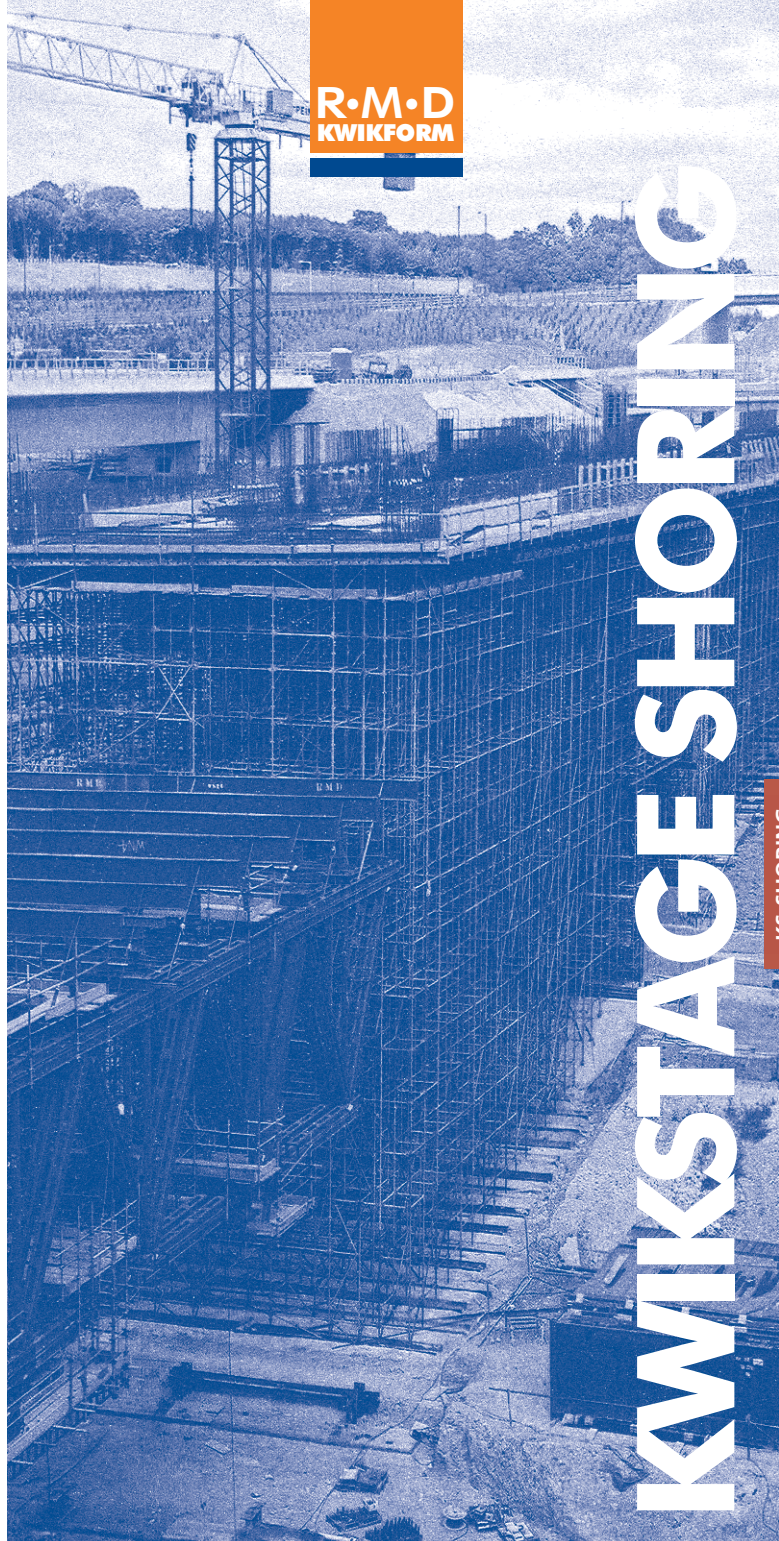


Adjustable Braces

Code	Description	Wt. (Kg)
RSX30003	Rapidshor Brace - Super Short Adj (Range: 840-1280mm)	6.42
RSX30002	Rapidshor Brace - Short Adj (Range: 1085-1770mm)	8.09
RSX30001	Rapidshor Brace - Long Adj (Range: 1530-2660mm)	11.42

RAPIDSHOR

RAPIDSHOR



R·M·D
KWIKFORM

KWIKSTAGE SHORING

KS SHORING

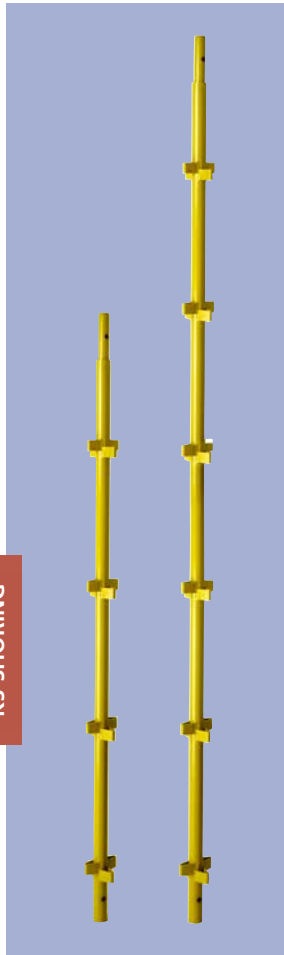
Shoring 55
55kN Kwikstage Standards

Code	Description	Wt. (Kg)
KAX33000	Kwikstage Standard 9ft 9in	16.84
KAX32000	Kwikstage Standard 6ft 6in	11.60
KPX32000	Kwikstage Standard OE 2000mm	10.41
KPX31500	Kwikstage Standard OE 1500mm	7.81
KPX31000	Kwikstage Standard OE 1000mm	5.21

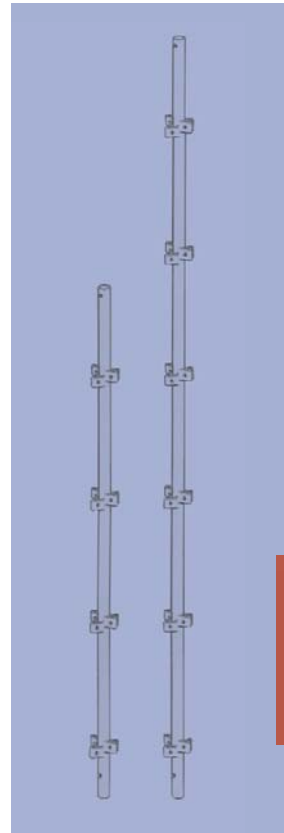
Shoring 75
75kN Kwikstage Standards

Code	Description	Wt. (Kg)
KSX10300	Shoring Standard - HD 3000mm	16.44
KSX10200	Shoring Standard - HD 2000mm	11.23
KSX40300	Shoring Standard - HD OE 3000mm	15.62
KSX40200	Shoring Standard - HD OE 2000mm	10.41
KSX40150	Shoring Standard - HD OE 1500mm	7.82
KSX40100	Shoring Standard - HD OE 1000mm	5.21
KSX10005	Shoring Spigot - HD	0.8
KAX10012	Connector - Roll Pin	0.01

KS SHORING



KS SHORING



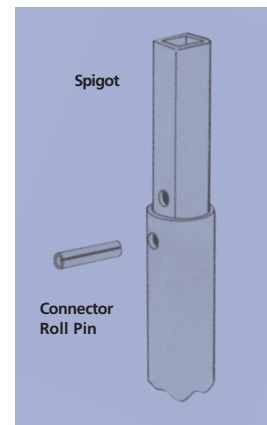
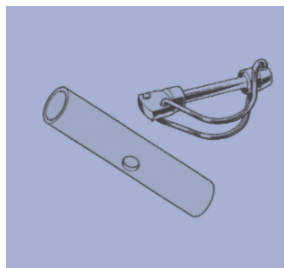
Note: Kwikstage is provided either galvanized or painted yellow.

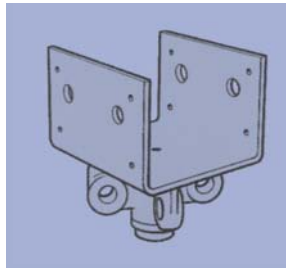
**Spigot Adapter and
Shoring Pin Assembly**

Code	Description	Wt. (Kg)
KSX10018	Shoring Adaptor - Spigot	0.7
KSX10011	Shoring Pin Assembly	0.14

SHORING 55 ONLY

Note: Kwikstage is provided either galvanized or painted yellow.





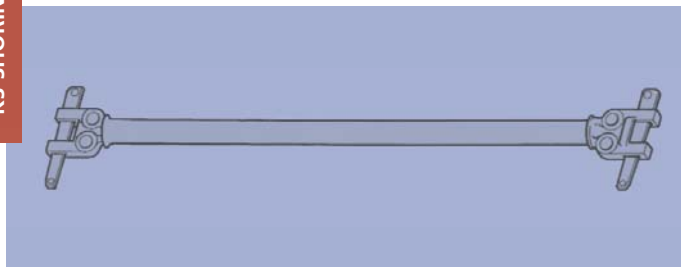
Shoring 'U' Head

Code	Description	Wt. (Kg)
KSX10013	Shoring U Head	5.85



Sloping Head Unit

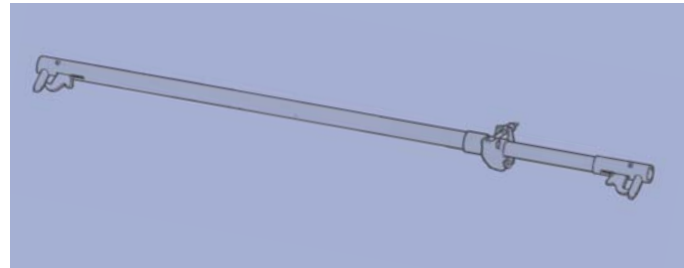
Code	Description	Wt. (Kg)
KSX10012	Shoring Sloping Head Unit	4.73



Shoring Ties

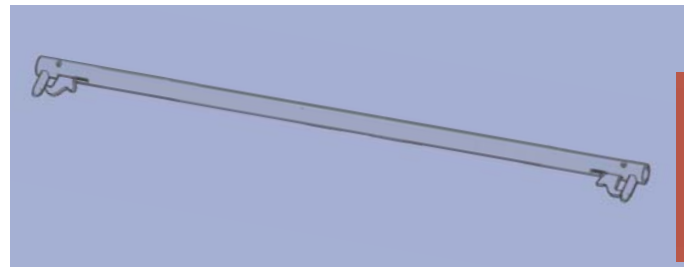
Code	Description	Wt. (Kg)	Bay Size (m)
KSX50240	Shoring Tie 2400mm	10.97	2.4
KSX50180	Shoring Tie 1800mm	8.83	1.8
KSX50120	Shoring Tie 1200mm	6.69	1.2
KSX50090	Shoring Tie 900mm	5.63	0.9
KSX50060	Shoring Tie 600mm	4.56	0.6

Note: Kwikstage is provided either galvanised or painted yellow.



Shoring Jack Brace

Code	Wt. (Kg)	Range (m)	Ref. Size
KSX10006	5.13	0.800 – 1.300	Brace - Jack No.1
KSX10007	7.28	1.118 – 1.929	Brace - Jack No.2
KSX10008	9.69	1.939 – 2.750	Brace - Jack No.3



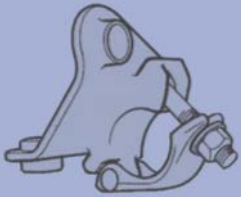
Trigger Braces

Code	Description	Wt. (Kg)	Colour
KSX32973	Trigger Brace 2973mm	9.86	White
KSX32673	Trigger Brace 2673mm	8.93	Red
KSX32438	Trigger Brace 2438mm	8.21	Blue
KSX32554	Trigger Brace 2554mm	8.56	Orange
KSX32195	Trigger Brace 2195mm	7.46	Brown
KSX31901	Trigger Brace 1901mm	6.54	Black
KSX32221	Trigger Brace 2221mm	7.53	Purple
KSX31795	Trigger Brace 1795mm	6.22	Yellow
KSX31418	Trigger Brace 1418mm	5.05	Green
KSX31643	Trigger Brace 1643mm	5.75	Grey
KSX31218	Trigger Brace 1218mm	4.43	Lt Blue

Note: Kwikstage is provided either galvanised or painted yellow.

Shoring Adapter

Code	Description	Wt. (Kg)
KSX10009	Shoring Adapter	1.29



Adjustable 'U' Heads

Code	Description	Wt. (Kg)
KPX60006	Kwikstage U Head - HD Adjustable	9.10
KPX60007	Kwikstage U Head - Short Adjustable	7.97



Adjustable Base Jacks

Code	Description	Wt. (Kg)
KAX20005	Universal Jack	6.68
KPX20003	Base - Short Adjustable	4.3



Note: Kwikstage is provided either galvanized or painted yellow.

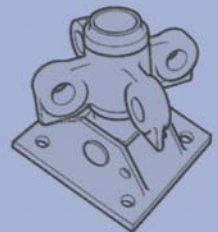
Adjustable Spigot Jacks

Code	Description	Wt. (Kg)
KSX10017	Spigot Jack - Mk 2	3.61
KSX10014	Spigot Jack - Short Adj	7.14



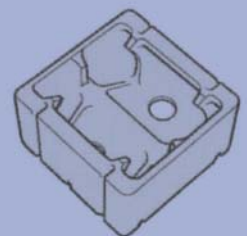
Sloping Base Unit

Code	Description	Wt. (Kg)
KSX10016	Shoring Sloping Base Unit	4.02



Sloping Base Boot

Code	Description	Wt. (Kg)
KSX10015	Shoring Sloping Base Boot	8.2



Note: Kwikstage is provided either galvanized or painted yellow.



KWIKSTAGE ACCESS



Standards

Code	Description	Wt. (Kg)
KAX32000	Kwikstage Standard 6ft 6in (2m)	11.6
KAX33000	Kwikstage Standard 9ft 9in (3m)	16.84



Universal Jack

Code	Description	Wt. (Kg)
KAX20005	Jack - Universal	6.68
Range = 144mm - 740mm		

Adjustable Base and Head Jack

KAX20003	Base/Head Jack - Adjustable	4.67
Range = 219mm - 736.5mm		



Ledgers

Code	Description	Wt. (Kg)
KAX42438	Kwikstage Ledger - Guardrail 8ft (2438mm)	9.52
KAX41829	Kwikstage Ledger - Guardrail 6ft (1981mm)	7.35

Transoms

Code	Description	Wt. (Kg)
KAX51270	Transom 4ft 2in (1270mm)	7.2
KAX50812	Transom 2ft 8in (813mm)	4.9



Diagonal Braces

Code	Description	Wt. (Kg)
KAX62744	Kwikstage Brace - Diagonal 9ft (2745mm)	11.12
KAX63658	Kwikstage Brace - Diagonal 12ft (3660mm)	13.84



Return Transoms

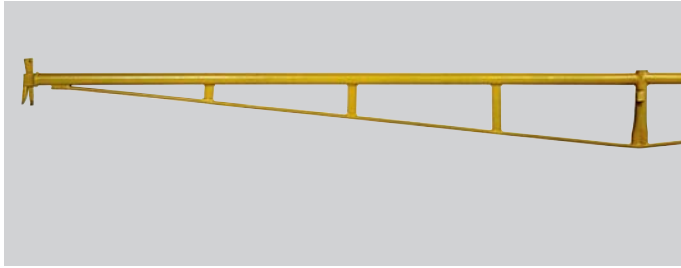
Code	Description	Wt. (Kg)
KAX50010	Transom - Return 4ft 2in (1270mm)	11.32
KAX50011	Transom - Return 2ft 8in (813mm)	7.52



Platform Brackets

Code	Description	Wt. (Kg)
KAX10003	Bracket - Platform 1 Board	1.95
KAX10004	Bracket - Platform 2 Board	5.21
KAX10005	Bracket - Platform 3 Board	7.29





Bridging Ledgers

Code	Description	Wt. (Kg)
KAX40001	Ledger - Bridging 16ft (4880mm)	30.19
KAX40002	Ledger - Bridging 24ft (7320mm)	63.2



End Toeboard Bracket

Code	Description	Wt. (Kg)
KAX10002	Bracket - End Toe Board	1.38



Tie Bars

Code	Description	Wt. (Kg)
KAX10026	Tie Bar 2ft 8in (813mm)	2.59
KAX10027	Tie Bar 4ft 2in (1270mm)	3.82
KAX10028	Tie Bar 6ft (1829mm)	5.41
KAX10029	Tie Bar 8ft (2438mm)	7.22

Steelstage

Code	Description	Wt. (Kg)
SGX12438	Steelstage 8ft (2438mm)	16.51
SGX11829	Steelstage 6ft (1829mm)	12.4
SGX11219	Steelstage 4ft (1270mm)	8.9



Guardrail Support

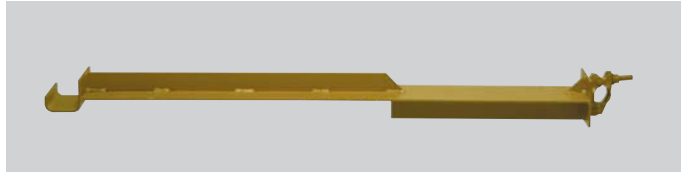
Code	Description	Wt. (Kg)
KPX10003	Support - Guardrail	4.68



Toeboard Bracket

Code	Description	Wt. (Kg)
KAX10009	Bracket - Toe Board	0.89





Ladder Access Transom

Code	Description	Wt. (Kg)
KAX50004	Transom - Ladder Access	10.42



Load Tower Standard Restraint

Code	Description	Wt. (Kg)
KAX10024	Load Tower Standard Restraint	3.97

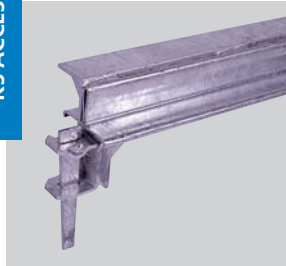


Loading Tower Transom

Code	Description	Wt. (Kg)
KAX50005	Transom - Loading Tower 8ft (2038mm)	45.66

Loading Tower

Code	Description	Wt. (Kg)
KAX10014	Loading Tower Gates (pair)	30.44
KAX10013	Loading Tower Gate Coupler	0.9
KAX10015	Guardrail/Gate Restraint	16.82



1.2m Infill Transom

Code	Description	Wt. (Kg)
KAX50003	Transom - Infill 4ft (1219mm)	13.37



2.4m Infill Tie

Code	Description	Wt. (Kg)
KAX10025	Infill Tie 8' (2438mm)	17.15



KS ACCESS

KS ACCESS



Kwikstage Stairway

Code	Description	Wt. (Kg)
KAX10023	Stairway 8'-0" x 6'-6" (2.44m x 2m)	31.81
KAX10016	Stairway Hand Rail	10.42



Kwikguard

Code	Description	Wt. (Kg)
KAX10018	Kwikstage Kwikguard - (1270mm)	15.23
KAX10019	Kwikstage Kwikguard - (1829mm)	17.64
KAX10020	Kwikstage Kwikguard - (2438mm)	30.15



ULTRAGUARD

ULTRAGUARD

KS ACCESS



Barrier

Code	Description	Wt. (Kg)
SAX12550	Ultraguard Barrier 2550mm	17.3
SAX13150	Ultraguard Barrier 3150mm	25.0

Posts

Code	Description	Wt. (Kg)
SAX11200	Ultraguard Post 1.2m	2.2

Slab Socket

Code	Description	Wt. (Kg)
SAX10001	Ultraguard Slab Socket	1.68



Slab Edge Clamp

Code	Description	Wt. (Kg)
SAX10002	Ultraguard Slab Edge Clamp	8.8



Steel Beam Clamp

Code	Description	Wt. (Kg)
SAX10003	Ultraguard Steel Beam Clamp 914mm	17.46



Alu Beam Bracket

Code	Description	Wt. (Kg)
SAX10005	Ultraguard Alu Beam Bracket	4.2
SAX10015	Ultraguard Ext Alu Beam Bracket	5.4





Soldier Socket

Code	Description	Wt. (Kg)
SAX10012	Ultraguard Soldier Socket	4.61

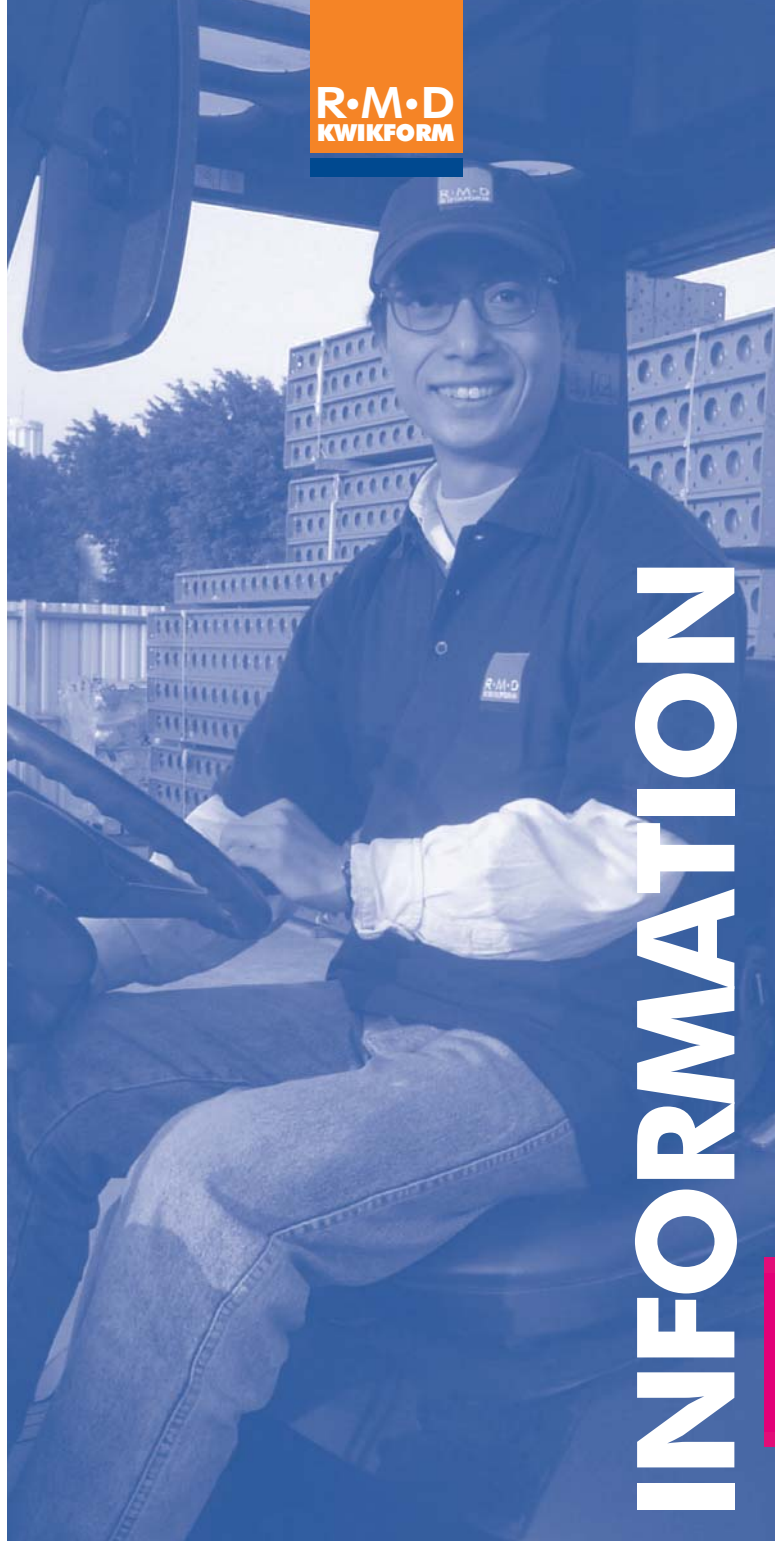
Shear Stud Socket

Code	Description	Wt. (Kg)
SAX10017	Ultraguard Shear Stud Socket	3.18



Wall Bracket

Code	Description	Wt. (Kg)
SAX10018	Ultraguard Wall Bracket	2.56
BNU16009	M16 x 60 Gd 8.8 Bolt & Nut	0.16
BNU16002	M16 Round Washer	0.01



INFORMATION

INFORMATION

STORAGE AND HANDLING

RMD Kwikform hire equipment is valuable and therefore if damaged or lost whilst in your possession, we will charge you for repairs or replacement of the items concerned.

Effective handling and storage of equipment is therefore important. Where possible store the equipment in a secure place, such as a guarded or locked compound, or if none available, close to site offices where security will minimise the chance of theft or unauthorised use.

We recommend that you consider returning any equipment which may not be required for immediate use to the RMD Kwikform yard, as this is the most likely time when equipment is lost or stolen from site.

We suggest that where possible, you keep RMD Kwikform equipment parts separated from other material. Particularly the smaller items, which could easily be disposed of, or discarded with site scrap and waste. This will help you to reduce the cost of losses later on.

EQUIPMENT RETURNS

If you notify our office of pending returns, we can arrange a suitable person/supervisor to visit your site and assist with guidance on dismantling procedures and other relevant information. Pallets can be made available to reduce your logistics cost.

The quantity of all returning equipment shall be based on delivery notes raised during delivery of equipment to site, and a count agreed by both qualified/ designated persons from both RMD Kwikform and your company.

If no such count takes place on site, the final quantity of returned equipment shall be based on counts conducted at the RMD Kwikform depot/yard upon its return and this count will stand as final.

EQUIPMENT CONDITION

To ensure RMD Kwikform delivers customers cost effective solutions to suit their needs, equipment must be cleaned and maintained. Equipment will be despatched clean and ready for use; equipment must be returned to us in the same condition, or any costs incurred in achieving this standard will be rechargeable. Your sales representative will be pleased to offer guidance on the standards required.

BRANCH NETWORK

Europe

United Kingdom

RMD Kwikform, Brickyard Road, Aldridge, Walsall WS9 8BW, UK.
Tel: +44 1922 743743 Fax: +44 1922 743400
Email: info@rmdkwikform.com

Branches: **Wales & S.W.:** Tel: 029 2037 4521 Fax: 029 2023 8703
Scotland: Tel: 0141 554 7425 Fax: 0141 554 8392
North: Tel: 01942 273815 Fax: 01942 273819
Midlands: Tel: 0121 580 6060 Fax: 0121 525 8308
South East: Tel: 01708 552 975 Fax: 01708 557 048

Ireland

RMD Kwikform, Ballyboggan Road, Finglas, Dublin 11, Ireland.
Tel: +353 1 830 2500 Fax: +353 1 830 2741
Email: rmd.dublin@rmdkwikform.com

Branches: **Belfast:** Tel: +44 28 9038 1771 Fax: +44 28 9038 1328
Ballinasloe: Tel: +353 9096 42196 Fax: +353 9096 42950
Cork: Tel: +353 21 488 9950 Fax: +353 21 488 9980

Spain

RMD Kwikform, Paseo del Club Deportivo s/n, Urbanización La Finca, Edif.3, 1ª Izda. Somosaguas, 28223 Pozuelo de Alarcón (Madrid).
Tel: +34 91 555 61 04 Fax: +34 91 555 47 45
Email: rmd.madrid@rmdkwikform.com

Branches: **Sevilla:** Tel: +34 955 721 822 Fax: +34 955 721 934
Málaga: Tel: +34 952 207 057 Fax: +34 952 299 058
Barcelona: Tel: +34 93 477 6414 Fax: +34 93 477 6415
Valencia: Tel: +34 963 820 812 Fax: +34 963 844 690
A Coruña: Tel: +34 981 170 080 Fax: +34 981 175 116
Bilbao: Tel: +34 946 74 033 Fax: +34 946 74 033
Valladolid: Tel: +34 983 292 552 Fax: +34 983 292 552

Portugal

RMD Kwikform, Av. 25 de Abril, 32 - 1 Esq, 2870 - 150 Montijo, Portugal.
Tel: +351 21 232 86 88 Fax: +351 21 231 57 15
Email: rmd.lisboa@rmdkwikform.com

Sweden

RMD Kwikform, Husie Kyrkoväg 49, Box 14015, 200 24 Malmö, Sweden
Tel: +46 4049 17 50 Fax: +46 4049 46 14
Email: mats.nilsson@heabbygg.se

BRANCH NETWORK

South America

Chile

RMD Kwikform, La Estera 811, Parque Industrial Valle Grande Lampa, Santiago - Chile
Tel: +562 747 1414 Fax: +562 747 2016
Email: rmd.chile@rmdkwikform.com

Middle East

UAE

RMD Kwikform, PO Box 5801, Sharjah, United Arab Emirates.
Tel: +971 6 553 4173 Fax: +971 6 553 4327
Email: rmd.uae@rmdkwikform.com

Abu Dhabi

RMD Kwikform, PO Box 259, Abu Dhabi, UAE.
Tel: +971 2 665 9798 Fax: +971 2 665 5689
Email: rmd.auh@rmdkwikform.com

Bahrain

RMD Kwikform, PO Box 5341, Manama, Kingdom of Bahrain.
Tel: +973 1782 5368 Fax: +973 1772 5562
Email: rmd.bahrain@rmdkwikform.com

Lebanon

RMD Kwikform, Hobeika Centre, Hazmieh, Lebanon
Tel: +961 338 8563 Fax: +961 595 5387
E-mail: youfo@cyberia.net.lb

Oman

RMD Kwikform Oman LLC, PO Box 889, Post code 113 Muscat, Sultanate of Oman
Tel: +968 2463 6776 D/L: + 968 2463 6772 Fax: +968 2447 8328

Qatar

RMD Kwikform, PO Box 405, Doha, Qatar.
Tel: +974 460 0937 Fax: +974 460 6427
Email: rmd.qatar@rmdkwikform.com

Kuwait

RMD Kwikform, PO Box 42094, Shuwaik 70651, Kuwait
Tel: +9657133959
Email: Mohd.Muhtaseb@rmdkwikform.com

BRANCH NETWORK

Australasia

Australia

RMD (Australia) Pty. Ltd.
PO Box 169, Melrose Park, South Australia, 5039.
Tel: +61 8 8179 8200 Fax: +61 8 8179 8201
Email: rmd.australia@rmdformwork.com

Branches/Regional Offices:

New South Wales:

Sydney Office: Tel: +61 2 8717 3700 Fax : +61 2 9728 6399
Newcastle Branch: Tel: +61 2 4969 6344 Fax: +61 2 4962 2761

Victoria/Tasmania:

Melbourne Office: Tel: +61 3 9359 9733 Fax: +61 3 359 9761
Hobart Branch: Tel: +61 3 6272 2566 Fax: +61 3 6272 2611
Launceston Branch: Tel: +61 3 6331 3751 Fax: +61 3 6331 9751

Queensland/Northern Territory:

Brisbane Office: Tel: +61 7 3266 3022 Fax: +61 7 3266 1054
Maroochydore Branch: Tel: +61 7 5445 3244 Fax: +61 7 5445 4822
Bundaberg Branch: Tel: +61 7 4152 3899 Fax: +61 7 4152 7978
Rockhampton Branch: Tel: +61 7 4927 5133 Fax: +61 7 4922 4075
Gold Coast Branch: Tel: +61 7 5593 4677 Fax: +61 7 5593 4828
Townsville Branch: Tel: +61 7 4779 0544 Fax: +61 7 4725 1364
Cairns Branch: Tel: +61 7 4054 5149 Fax: +61 7 4054 5198
Mackay Branch: Tel: +61 7 4955 1228 Fax: +61 7 4955 3052
Darwin Branch: Tel: +61 8 8984 4696 Fax: +61 8 8947 0035

Western Australia:

Perth Office: Tel: +61 8 9248 5900 Fax: +61 8 9248 5800
Naval Base Branch: Tel: +61 8 9410 2777 Fax: +61 8 9410 2779
Karratha Branch: Tel: +61 8 9185 3096 Fax: +61 8 9144 2157

New Zealand

RMD (New Zealand) Ltd.
PO Box 22-316, 101-105 Station Road, Otahuhu,
Auckland 6, New Zealand.
Tel: +64 9 276 5955 Fax: +64 9 276 6732
Email: rmd.auckland@rmdformwork.com

Branches:

Wellington Branch: Tel: +64 4 232 9300 Fax: +64 4 232 4144
Christchurch Branch: Tel: +64 3 348 9621 Fax: +64 3 348 9682

BRANCH NETWORK

Asia

Hong Kong

(including Indonesia, Thailand, Vietnam, Malaysia and Macao)
RMD Kwikform, Unit B & C,
22/F Easy Tower, 609 Tai Nan West Street,
Cheung Sha Wan, Kowloon, Hong Kong.
Tel: +852 2415 4882 Fax: +852 2413 4797
Email: rmd.hongkong@rmdkwikform.com

Korea

RMD Kwikform Co. Ltd, RMD House, 609-23
Yeoksam-Dong, GangNam-Gu, Seoul, Korea.
Tel: +82 2 545 2484 Fax: +82 2 545 1878
Email: rmd.seoul@rmdkwikform.com

Philippines

RMD Kwikform, Unit 1104, Annapolis Wilshire Plaza,
#11 Annapolis Street, Greenhills, San Juan,
Metro Manila, Philippines.
Tel: +632 724 42 13 Fax: +632 724 42 14
Email: rmd.manila@rmdkwikform.com

South Africa

South Africa

RMD Kwikform South Africa (Pty) Ltd
26 Venturi Crescent, Hennopspark X5,
Pretoria, South Africa
Tel: (012) 681-0360 Fax: (012) 681-0361
Email: info.sa@rmdkwikform.com

Branches:

Geutang Branch: Tel: +27 (0) 12 681 0360 Fax: +27 (0) 12 681 0361
Kwa Zulu Natal: Tel: +27 (0) 31 569 0960 Fax: +27 (0) 31 569 0980