



stoneCIRCLE



Bringing stone to life

Established in 1968, B&V Masonry uses the stone**CIRCLE** brand to promote its natural stone products and associated services to the industry. During the company's many years of trading, it has developed into a high profile masonry business with an impressive list of retail and corporate clients, both here in the UK and abroad.

We hope that you will find inspiration for your own project within these pages and recognise the commitment to quality that we strive to achieve with everything that we do. stoneCIRCLE** manufacture a vast range of products from natural stone and the latest stone composites. The purpose of this brochure is to illustrate and show some of the products we offer and projects we have completed.**



Steve Vanhinsbergh, Director

This brochure is the copyright of stone**CIRCLE**. No whole or part may be reproduced without permission.

A special thanks to all our clients, especially for allowing us to photograph various projects in their private homes.

Natural stone in experts' hands	04	Investing in stone	42
Experience the beauty of stone	06	From samples to delivery	44
Made specially	08	View hundreds of stone slabs in comfort	46
Contemporary kitchen	10	Stone types	48
Modern spa	16	Stone terms	49
Grand design and beautiful detail	20	Technical information	50
Architectural stonework	22	Hi-tech precision with a tradition of quality	52
Outside spaces	26	Our team	54
Stone floors	28	Locations	55
Stone worktops	36		

Natural stone in experts' hands



Founded by Bernard Vanhinsbergh in 1968, the business has steadily grown to its current size with a team of 35 skilled staff in 2010. His two sons Jeff and Steve now drive the business with a passion for stone and technology to constantly improve the capability and quality of our manufacturing and installation.

Over the years, the team have forged strong links with quarry owners and suppliers of natural stone from Britain, Europe and all over the world. We seek out companies with the pride and commitment to quality that reflects our own.

Please ask us to advise on your project

First and foremost the team at stone**CIRCLE** are trained stonemasons. We know how to manufacture and install stone, thus it pays dividends to involve us early in a project's

development. To achieve the best results for your project, we also use our years of experience to advise on the construction and preparation before installing your stone.



Machine carved sculpture made of Portland stone

Experience the beauty of stone



We have two showrooms, where you can see examples of beautiful stone products such as shower trays, stone fireplaces, worktops and tiles. We even have a working

kitchen in our Newbury showroom where we sell top brand name appliances such as Gaggenau and Wolf and where you can attend cookery demonstrations.



Pick your own in comfort

You can browse through hundreds of stone slabs in indoor comfort in the Newbury showroom, and choose the particular slab that you wish to use in your own project.





The showroom at stone**CIRCLE**

Made specially



Made to measure

All of our products, with the exception of our tiles are custom made to your exact specifications. This allows us to manufac-

ture virtually anything that you can imagine as long as it can be made in stone and means that your project will be unique.



The Newbury showroom

Contemporary kitchen



bold

glass

linear

square

The contemporary kitchen nowadays is an expression of lifestyle. It wants to be modern, minimalist and geometric. For your worktop and floor pick from textured granite, quartz

composites, honed slate and limestone. Combined with stainless steel appliances, chrome handles and wood, glass or lacquer panels, it will turn your kitchen into a modern dream.



Honed and brushed Nero Assoluto combined

Contemporary kitchen



shine

steel

lacquer

curved

Horizontal lines, asymmetry, a lack of ornaments and a bold mix of materials and texture add to a contemporary feel. The modern kitchen is sleek, smart and extraordinary. Curves

are back in fashion as well. Decide if you prefer a modern contrast of colours with light units and dark floors or stay “in tone” for a kitchen makeover that is trendy and functional.



Polished Nero Assoluto



Contemporary kitchen



straight

polish

smooth

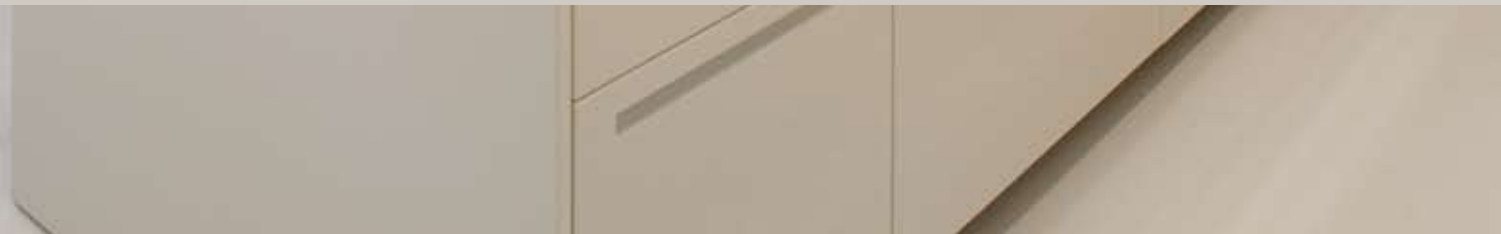
classic

A floating island unit has a timeless appeal and underlines the open modern look. Keep flooring simple and use smooth stone. Limestone and travertine come in hundreds of different

colours and textures to suit your needs. Uncluttered surfaces are mandatory for a contemporary look as is a streamlined sink in steel or stone and modern taps.



Kashmir White Work Surfaces



Modern spa



pamper

relax

hideaway

luxury

treat

Today's bathroom has developed into a modern sanctuary which is energising and revitalising in the mornings and provides peace and tranquility after a busy day. With their

warm colours, limestone and travertine are perfect for creating a luxurious, hygienic space. Indulging in a spectacular bathroom means being able to relax right in your own home.



Warm Walnut Travertine



Modern spa



sanctuary

linger

dream

space

simplicity

Combine coloured glass mosaics with pure coloured stone to add detail and interest to a room. Coordinating contemporary fixtures, a frameless mirror and an unusual sink design

will centralise the aesthetic. To add to the airy feel of a modern bathroom, implement a glass partition and make use of a spacious wet room.



Polished Crema Marfil Vanity Top

Grand design and beautiful detail



timeless

soft

curved

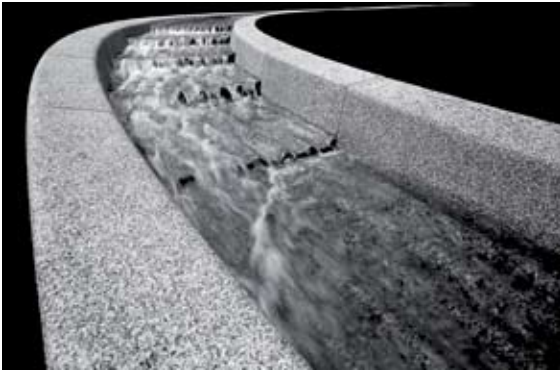
ornate

Minimal, linear, contemporary bathroom vanities will result in a synergistic blend of strength and beauty. Contemporary aesthetic does not exclude natural stone or natural woods.

Those materials will provide lasting endurance and timeless style, and because they are tough enough to withstand everyday wear, they will remain beautiful for years to come.



Architectural stonework



tiling

cladding

sculpturing

engineering

Stone as a material for architectural purposes has been known for centuries. Starting in Greek and Roman times up to today, where modern production methods made it possible

to accurately cut even the hardest of stones. From 'bending' stone to making a 'virtual image' of the Diana Memorial a reality, we are known to be one of Britain's leading manufacturers.



Beaumont Beige Limestone with Venus finish

Architectural stonework



spas

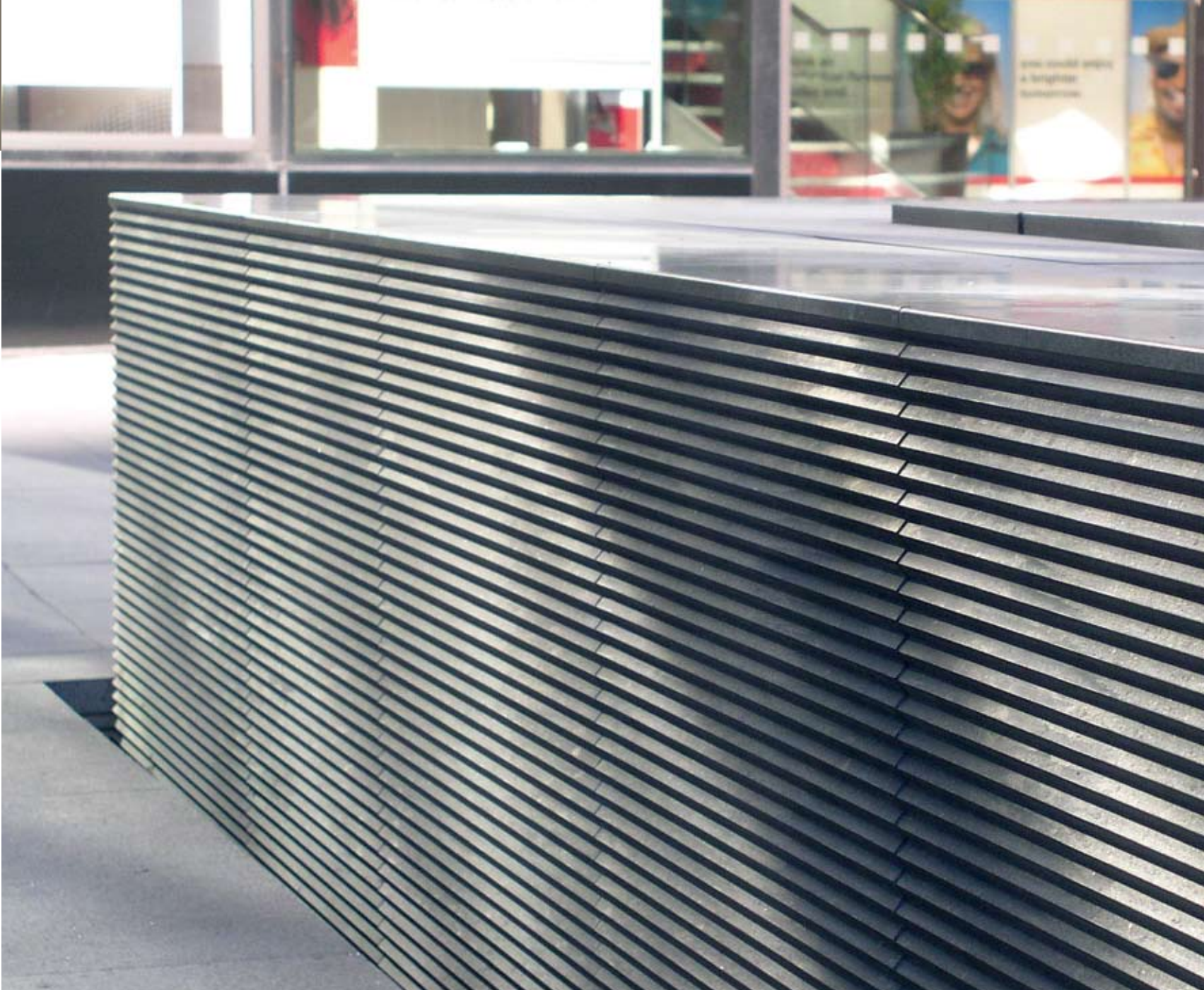
hotels

water features

bars

We have been involved in manufacture and supply to countless commercial projects over the 40 plus years that the firm has existed. From machining granite water features to a tolerance

of 1 mm over 27 m to carving wash basins from a single stone slab, we rise to a challenge and deliver the goods.



Black Granite Water Feature

Outside spaces



entrance

gates

residential developments

As well as bringing a homely feel to your house, stone is by its nature also very well suited to be used for all kinds of projects outside your home. If you need a new patio area, pathway or

want to create emphasis on your entrance area, stone is the most durable material withstanding the effects of heat, cold, wind and rain.



Portland Stone







Beaumont Beige Antique

limestone

29











34

travertine

Warm Walnut Linear Paving



Belgian Bluestone

limestone

35



36

granite

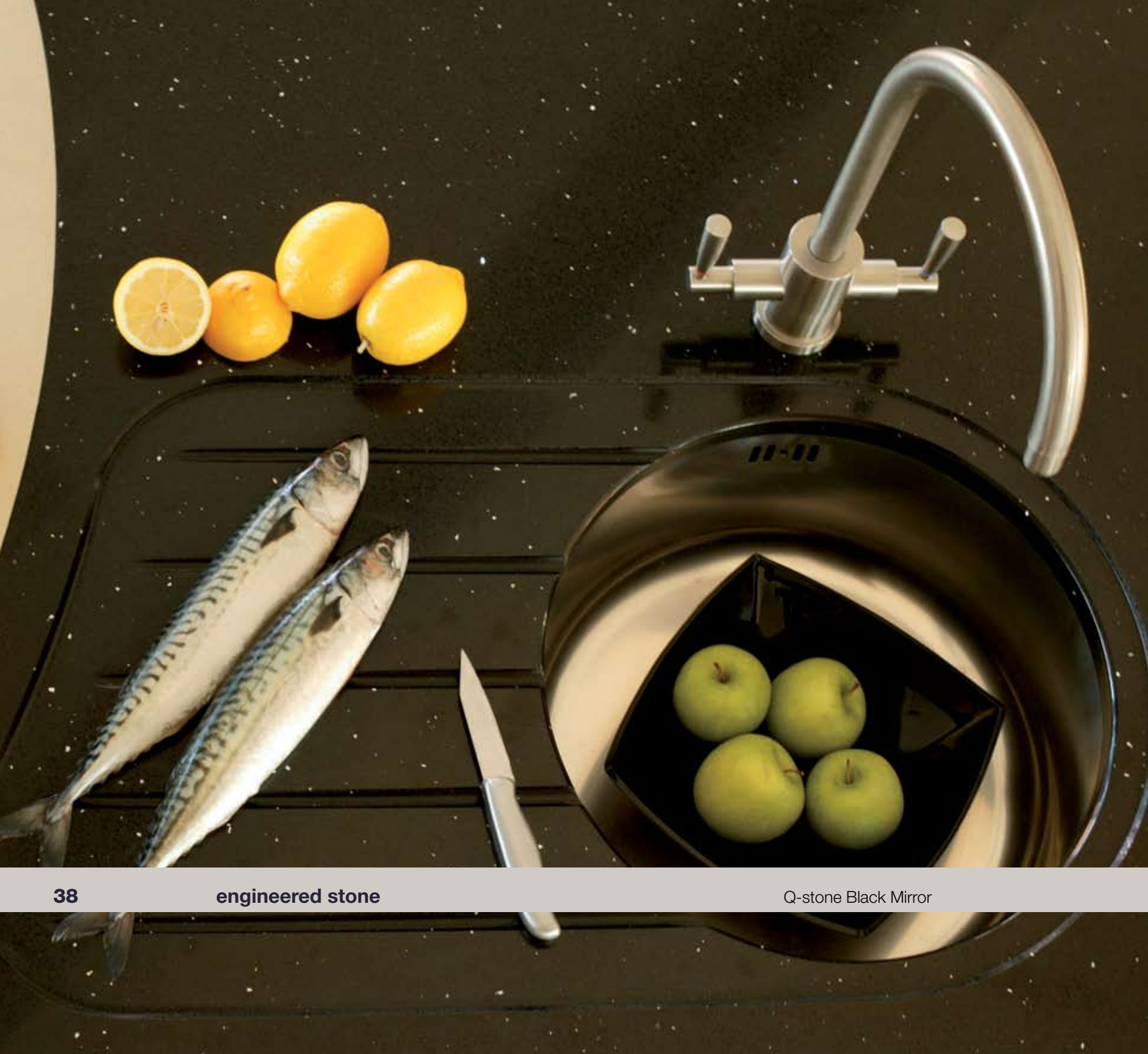
Kashmir Gold



Bianco Eclipsia Polished

quartzite

37





Polished Nero Assoluto

granite

39



40

granite

Giallo Veneziana



Wild West Green

granite

41

Investing in stone



Once you have decided to invest in stone for your project, it is important to get the right advice to ensure that the investment is a wise one.

There are many hundreds of different stones from all over the world, each with its own unique colour, veining, hardness and strength.

Indulge and specify today to enjoy luxury for years to come.



Get expert advice on choosing the right stone

However big or small the job, we will help you to choose the right stone for your home and will give you advice from initial drawing to finished project.



One of hundreds...

From samples to delivery

Product Availability

Stone**CIRCLE** offers a vast range of products and bespoke stonemasonry using stone from all over the world. We aim to hold in stock many of the most popular types and can source the others as necessary. Over time quarries become uneconomical to operate or simply run out of stone and that particular stone then becomes unavailable. We always advise our clients of any such risk factors during the design phase so that the project can be completed without interruption.

Sample Service

Stone is a natural material and as such can vary in colour, veining and surface texture from block to block. We are able to provide you with small cut samples and will let you

know if the stone you have chosen is consistent in appearance or varying. If it is the latter we always recommend that you visit us to see the slabs before they are cut.

Templating Service

Stone**CIRCLE** uses the latest digital templating techniques that complement our software and CNC machines. It is important that the site is prepared for us before we arrive to template. We will tell you which areas need to be completed to ensure your project progresses as smoothly as possible.

Turnaround Times

We operate a modern production and planning system that in most cases allows a rapid 5 working

day turnaround from templating to installation. Our networked diary system enables us to 'see' where in the production process your project is and accurately predict when it will be complete.

Installation

Stone**CIRCLE** offer an installation service for most of the 'slab' work such as kitchen tops and wall cladding. For floor tiling we will recommend local tradesmen that we have worked with previously and with whom you can deal directly. The key to beautiful, long lasting stone surfaces is a perfect preparation of the site and we will gladly advise on the work that needs to be completed before we can install your stone.

Deliveries and Collections

We use a number of different delivery methods and we will choose the appropriate one to ensure that your stone reaches you in perfect condition, on time and at a reasonable cost. Of course, if you have a suitable vehicle, you are welcome to collect from us here at Shothanger. Goods collected are then transported at the individual's own risk. Please ring to check on opening times.

Terms and Conditions

All quotations, orders and invoices are subject to our terms and conditions. You can find those on the back of all quotations and invoices. They are also available online at www.stone-circle.com as a PDF download.

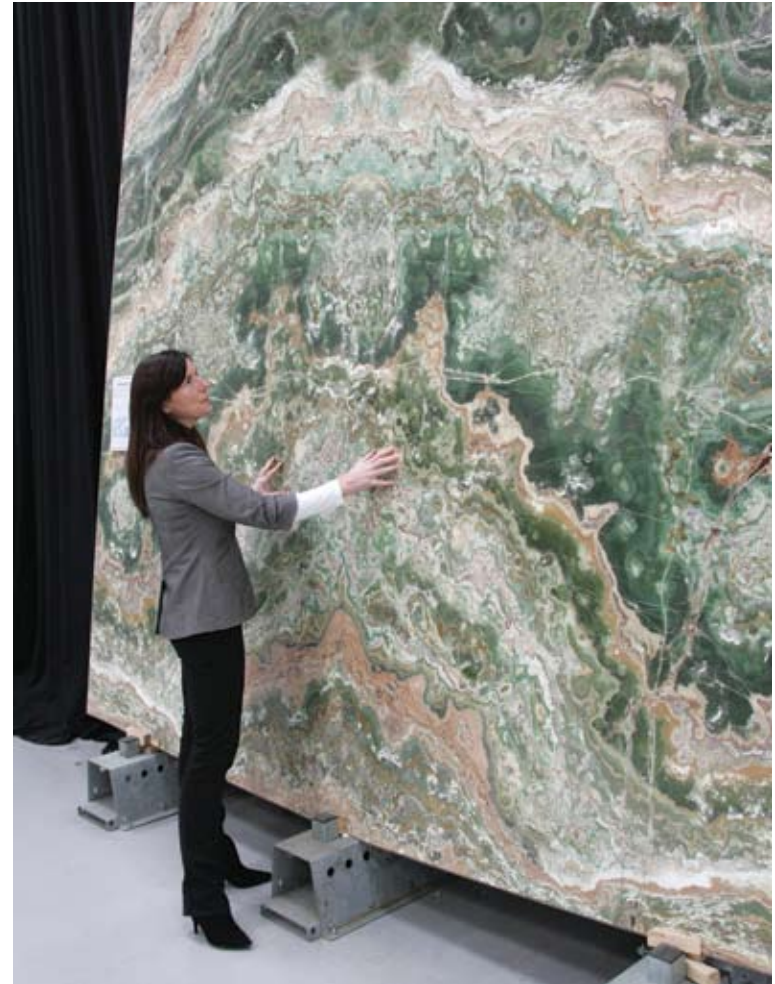
Placing an order

After you have chosen your stone, we can take your order. All prices are ex-warehouse and subject to VAT. For floor and wall tiles a wastage factor of 10% should be taken into

account. We have our own kitchen worktop installation team. If you require tiling, we will recommend a local tradesman who works to our high standards.



View hundreds of slabs in comfort



Extensive stock ensuring quick turn around times

You can view the hundreds of stone slabs that we always have in stock in comfort at our Newbury showroom where they are kept indoors on an easy to browse racking system. We are happy to accompany

you and offer advice whilst viewing and selecting your stone. Due to our huge stock we can ensure quick turn around times of 5 working days, in most cases, from templating to finished installation.




Stone types




Limestone

Limestone is a sedimentary rock composed largely of the mineral calcite. The primary source of the calcite in limestone is most commonly marine organisms. Limestone makes up about 10% of the total volume of all sedimentary rocks.



Travertine

A sedimentary rock which is deposited from the water of mineral springs or streams saturated with calcium carbonate. When pure, travertine is white, but it is often brown to yellow due to impurities. It is a hard and durable stone typically quite porous with numerous cavities.



Granite

Granite is a common and widely occurring type of intrusive, felsic rock. Granites can be pink to dark gray or even black. Granite is nearly always massive, hard and tough, and for this reason it has gained widespread use as a construction stone and is perfect for kitchen worktops.



Slate

Slate is a fine-grained, homogeneous, metamorphic rock derived from an original shale-type sedimentary rock composed of clay or volcanic ash through low grade regional metamorphism. It splits easily into sheets and most commonly comes in green and black shades.



Marble

Marble is a metamorphic rock resulting from regional metamorphism of sedimentary carbonate rocks. It comes in a vast range of colours from white, green, red to black and its veining generally contrasts with the base stone colour.



Engineered stone

Composed of crushed stone mixed with bonding agents and colouring pigments, engineered stones offer most of the qualities of natural stone whilst having a consistency of colour that does not occur naturally. Our large range includes Trevisan, Q-Stone, Silestone and CaesarStone.

Stone terms

Antique

Sometimes called tumbled or aged this is a popular finish applied to travertine and limestone flooring to give it the worn and lived in look. At home with both traditional and contemporary design it is a very practical finish to specify.

Brushed

A brushed finish is coarser than the Satinato (see Satinato) and is achieved by first 'bursting' the surface of the stone by subjecting it to a very high temperature and then brushing the surface with abrasive brushes. Used to create a more rustic look it can also help improve the slip resistance of stone used in flooring.

Filled

Used extensively with travertine to fill the holes that occur naturally in the stone. The filler can be either clear or coloured resin to match the colour of the stone.

Honed

To achieve a honed finish the last few fine abrasives are not used and the stone is left with a smooth matt finish. This is ideal for stones which cannot take a polish and where a gloss look is not desired.

Polished

A polished finish is achieved using finer and finer abrasives to leave the stone with a deep gloss and reflective surface. Not all stones will

achieve a polish and some mineral inclusions present in the stone will not polish as deeply as the surrounding stone. Polished stone is usually the easiest to keep clean.

Riven

Slate is most commonly riven as it is formed in layers and easily split along the layers to give a very natural textured finish.

Tumbled

Tumbling is a process used to give an aged look to the stone. Tumbled stones possess a rustic and time worn look. The unique patterns of these stones add an extra touch of beauty and elegance to any interior.

They can also be used for exterior applications. Tumbled stones are durable and make beautiful and elegant non slip floors.

Satinato

A Satinato or leather finish is applied with abrasive brushes and imparts a soft textured and matt finish to the stone. It has the added benefit of making the stone look aged.

Unfilled

Many travertine floor tiles are supplied unfilled so that the voids are grouted with the joints after the tiles are laid. A grout colour matched to the stone will provide the most pleasing result.

Technical information

Stone is heavy

At typically 80 kg per square metre for 30 mm thick slabs, there are obvious constraints on the size of slabs we can handle and install. We always try to minimize the number of joints but there will be times when size, access and installation considerations will determine the maximum size of the pieces we produce.

Stone is brittle

The compressive strength of stone is good but its tensile strength is low. If you bend it, it will crack. For vulnerable stone we resin bond strengthening rods into the stone to impart additional strength.

Stone is porous

A common misconception is that stone, especially granite, is non



porous. In its natural state it is porous and a sealer is required to keep it stain free.

Where a client intends to use stone for a shower tray or in a wet room, we recommend that the area or room is made waterproof prior to the installation of the stone. If it is

tested and does not leak before the stone is fitted, it is unlikely to leak afterwards. It is also important to choose the correct trap and 'dress' the waterproofing into it. This will ensure that any moisture that does pass through the stone or joints is routed to the drain.

Where stone is to be fitted to the walls of wet areas, such as showers, we recommend a tile backer board which is itself waterproof. These are specifically design to maximize the adhesion of the stone to the wall and will provide the best long term result.

Ask us for stone treatment products!

All natural stone benefits from being sealed to prevent liquid ingress. We carry a full range of sealers, cleaners and stone

care products and will be happy to advise you on how to look after your stone.



Turkish New Cream Limestone Wave Pattern

Hi-tech precision with a tradition of quality



We enjoy the challenge of producing the impossible

Stone**CIRCLE** uses the very latest stone industry technology, working to precision even on the grandest scale. We have manufactured many items which were previously thought impossible

because of their complexity and fragility. We constantly monitor the quality of both our products and service. From the initial enquiry to the final installation, we strive to be the best in the industry.



Our team



Steve Vanhinsbergh

Director



Jeff Vanhinsbergh

Director



John Cooney

Schedules



Brad Wilkinson

Sales



Barry Woodley

Production



service

advise

support

guidance

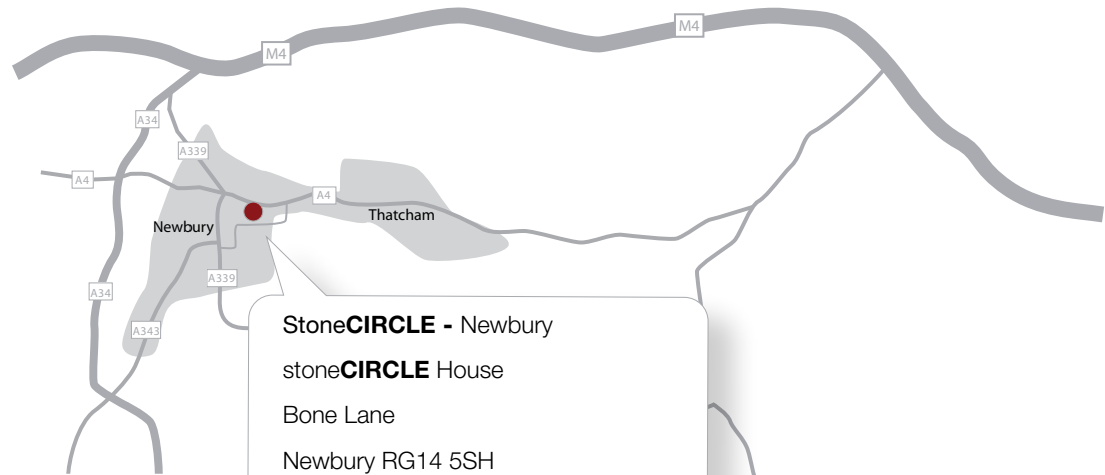
expertise

Together with a skilled team of masons, the office staff alone has over 60 years experience in the industry. Ensuring that your project is dealt with efficiently and proficiently from start

to finish is our goal. We recognize, that satisfied clients have been the mainstay of the business for 40 years and strive to provide the very best levels of service possible.

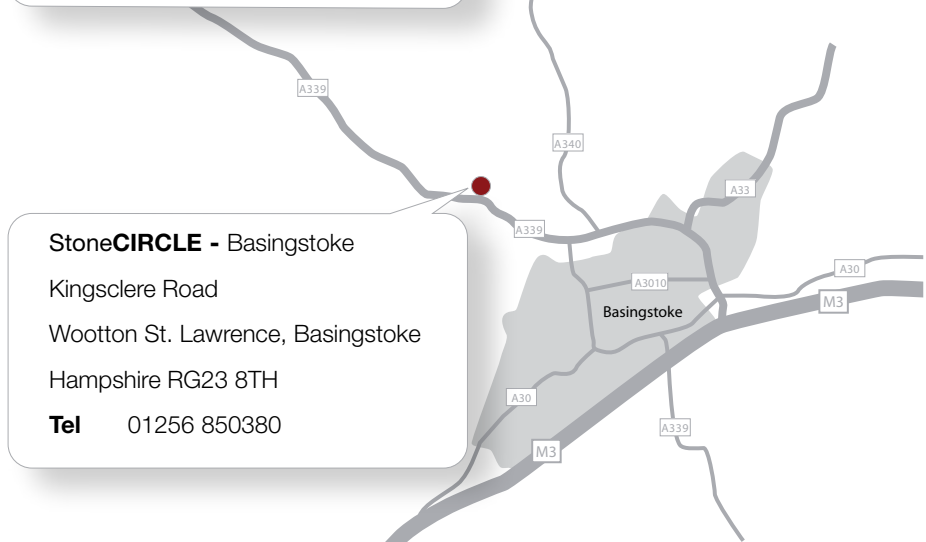
Locations

StoneCIRCLE – Newbury
is on the Bone Lane Industrial
Estate just off Hambridge Road.



StoneCIRCLE - Newbury
stoneCIRCLE House
Bone Lane
Newbury RG14 5SH
Tel 01635 279870

StoneCIRCLE – Basingstoke
is on the A339 outside Basingstoke
at the junction with Monk Sherborne.



StoneCIRCLE - Basingstoke
Kingsclere Road
Wootton St. Lawrence, Basingstoke
Hampshire RG23 8TH
Tel 01256 850380

SHOWROOM OPENING TIMES

Opening times – Newbury

Monday to Friday 09.00 to 17.00
Saturday 09.00 to 12.30

Opening times – Basingstoke

Monday to Friday 08.00 to 17.00
Saturday 09.00 to 12.30

sales@stone-circle.com
www.stone-circle.com

Stone**CIRCLE**

Kingsclere Road

Wootton St. Lawrence

Basingstoke

Hampshire RG23 8TH

www.stone-circle.com

