

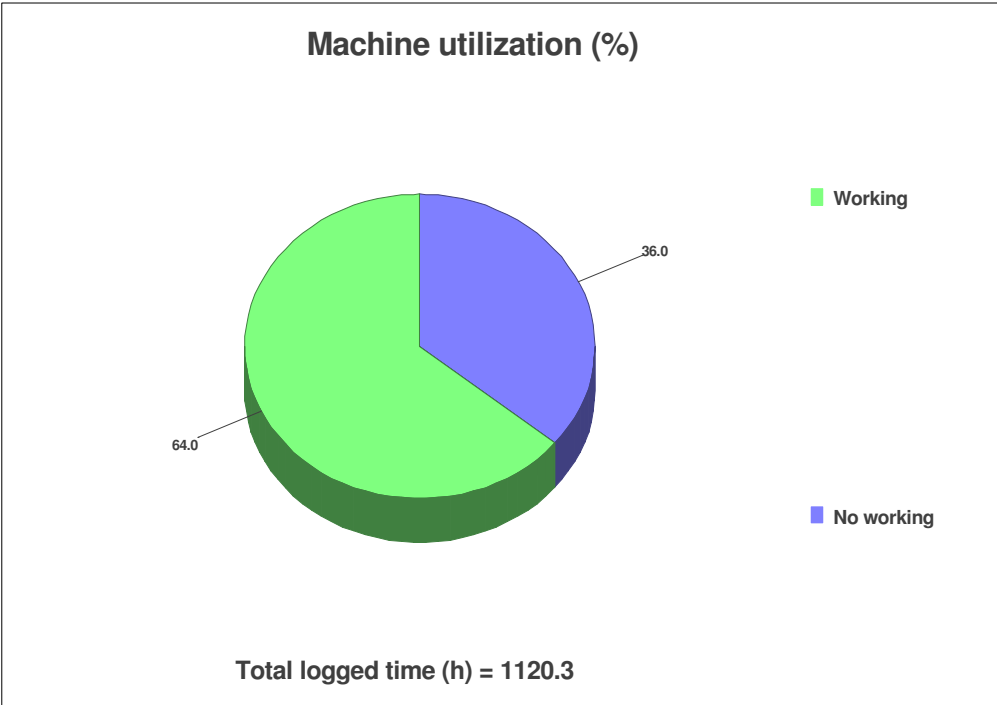
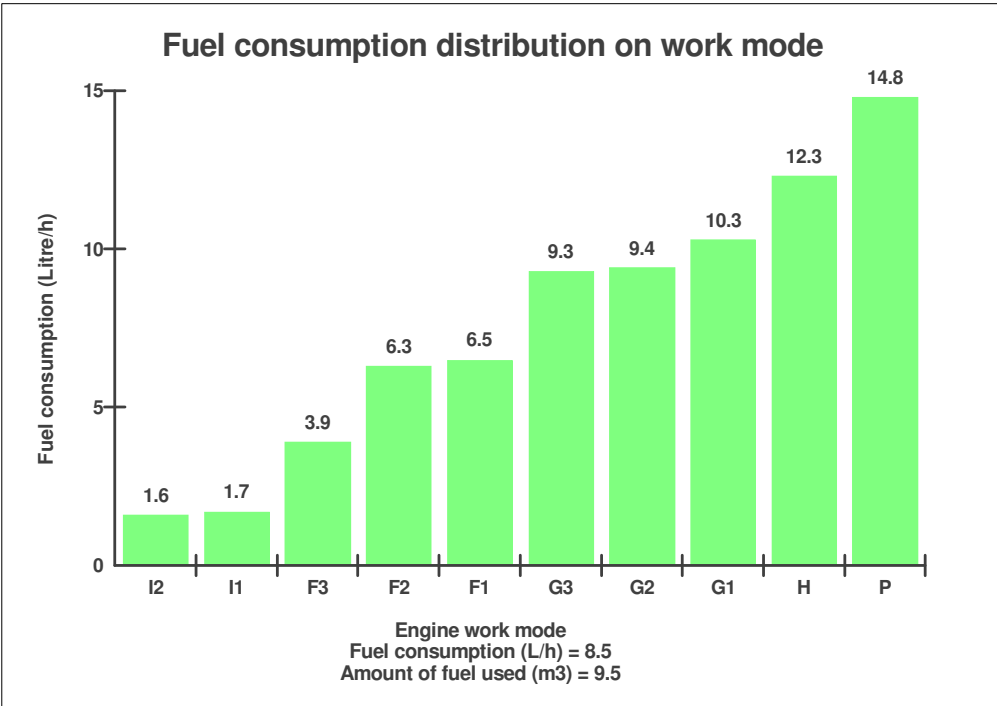
VOLVO CONSTRUCTION EQUIPMENT MATRIS REPORT

Machine model EC140C	Serial no 110193	Operating hours 1147.9	Reading date 13/07/2013	Page 1
Company markholt	Dealer colin massey		Report Issuer	
Contact Name	Technican Colin Massey		Primary Application Civil engineering/Heavy construction	
Site	Workorder		Ground Condition	

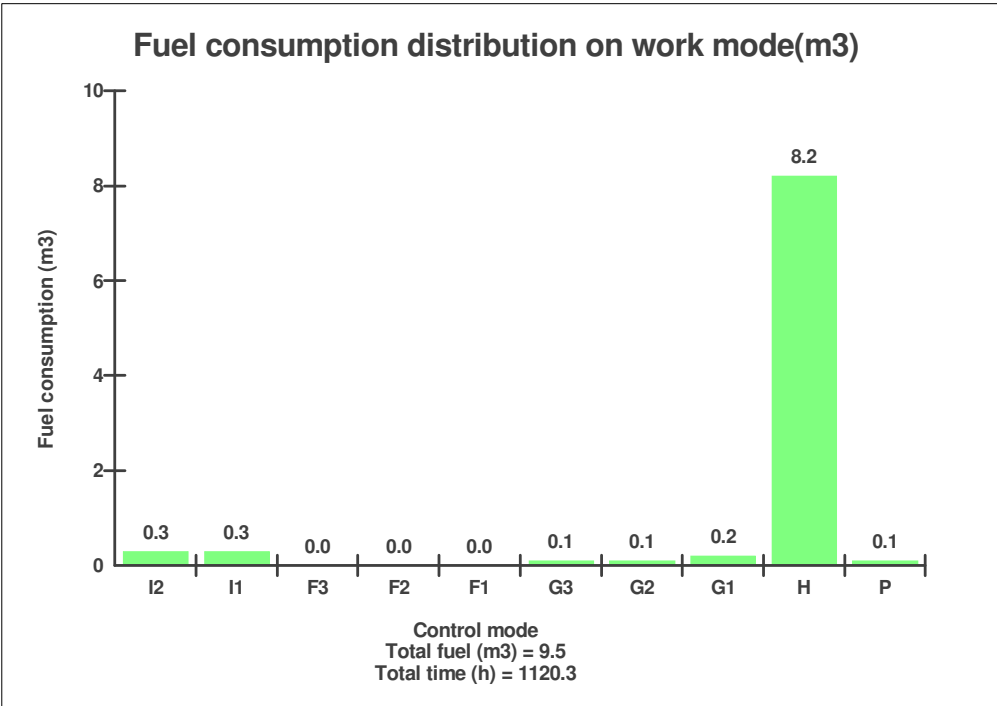
Matris Reading, Summary / Recommendation



Machine model EC140C	Serial no 110193	Operating hours 1147.9	Reading date 13/07/2013	Page 2
-------------------------	---------------------	---------------------------	----------------------------	-----------



Machine model EC140C	Serial no 110193	Operating hours 1147.9	Reading date 13/07/2013	Page 3
-------------------------	---------------------	---------------------------	----------------------------	-----------



Machine model EC140C	Serial no 110193	Operating hours 1147.9	Reading date 13/07/2013	Page 4
-------------------------	---------------------	---------------------------	----------------------------	-----------

Engine ECU information

ECU MID	128
Hardware Part No	60100000
Hardware Issue	6
Software Part No	60101038
Software Issue	1
Serial no	7463617
Dataset 1 Part No	12331217
Dataset 1 Issue	1
Dataset 2 Part No	12335151
Dataset 2 Issue	1



Machine model EC140C	Serial no 110193	Operating hours 1147.9	Reading date 13/07/2013	Page 5
-------------------------	---------------------	---------------------------	----------------------------	-----------

Instrument ECU information

ECU MID	140
Hardware Part No	14544928
Hardware issue	1
Software Part No	14578122
Serial no	8074019
Dataset 1 Part No	14549396
Dataset 2 Part No	14557066



Machine model EC140C	Serial no 110193	Operating hours 1147.9	Reading date 13/07/2013	Page 6
-------------------------	---------------------	---------------------------	----------------------------	-----------

Vehicle ECU information

ECU MID	187
Hardware Part No	14554880
Hardware issue	1
Software Part No	14586032
Serial no	8082058
Dataset 1 Part No	14544903
Dataset 2 Part No	14586038



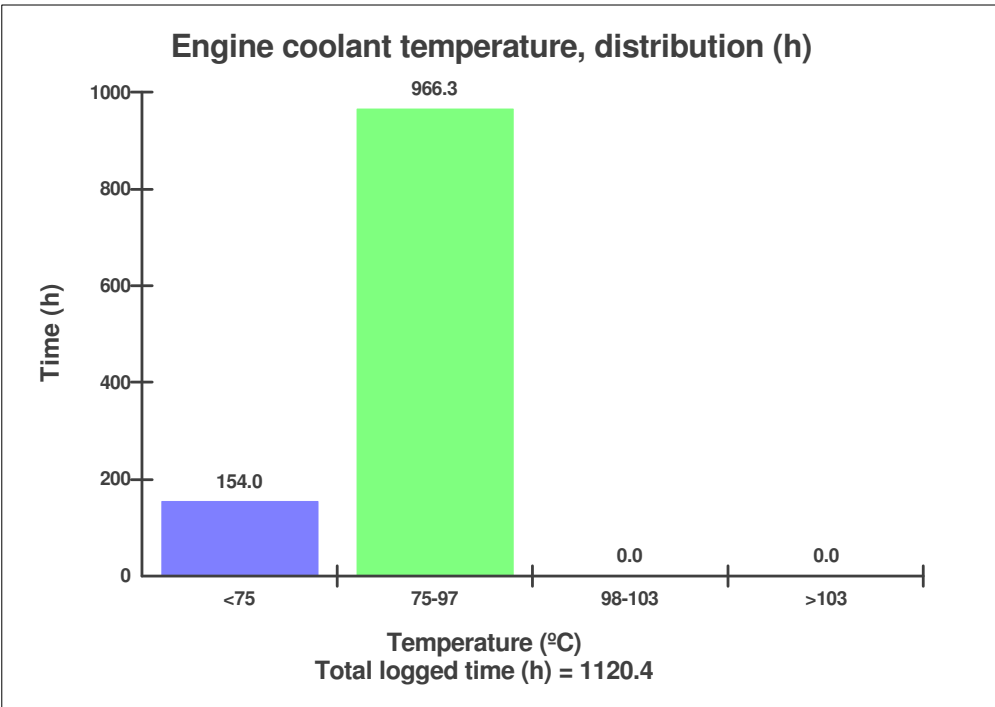
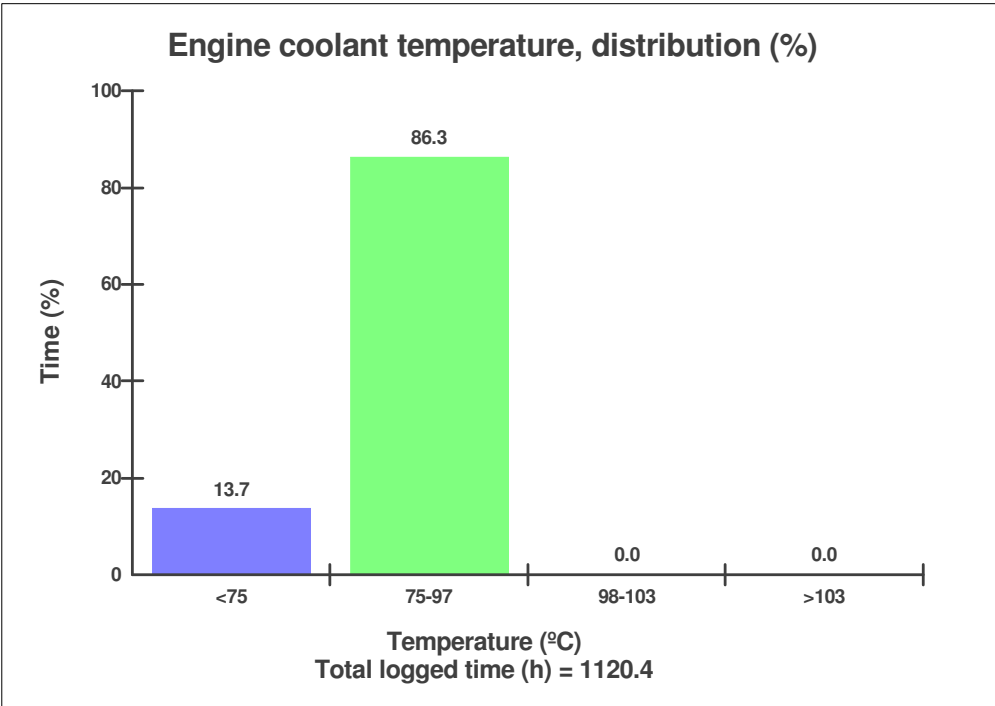
Machine model EC140C	Serial no 110193	Operating hours 1147.9	Reading date 13/07/2013	Page 7
-------------------------	---------------------	---------------------------	----------------------------	-----------

Climate ECU information

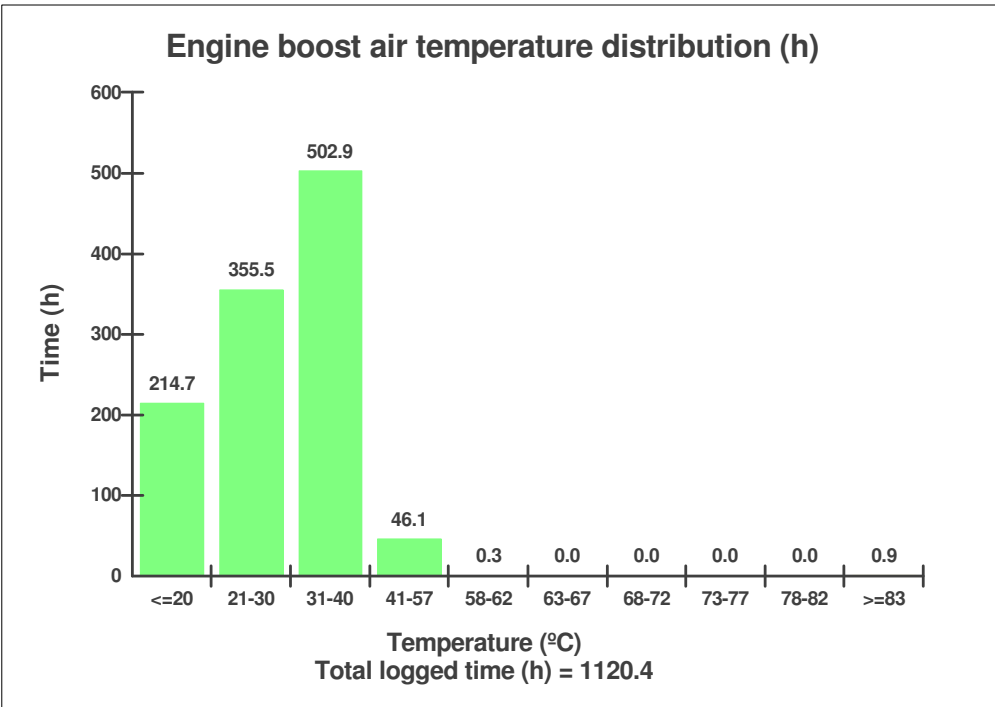
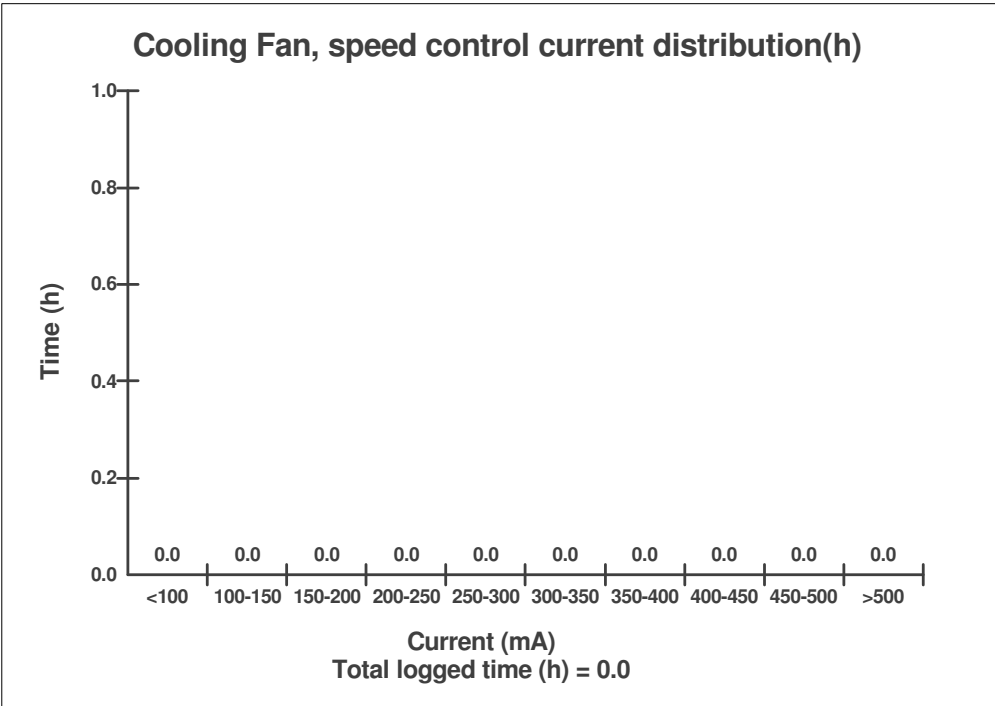
ECU MID	146
Hardware Part No	11443400
Hardware issue	3
Software Part No	11380167
Serial no	7455027
Dataset 1 Part No	11443261
Dataset 2 Part No	11443333



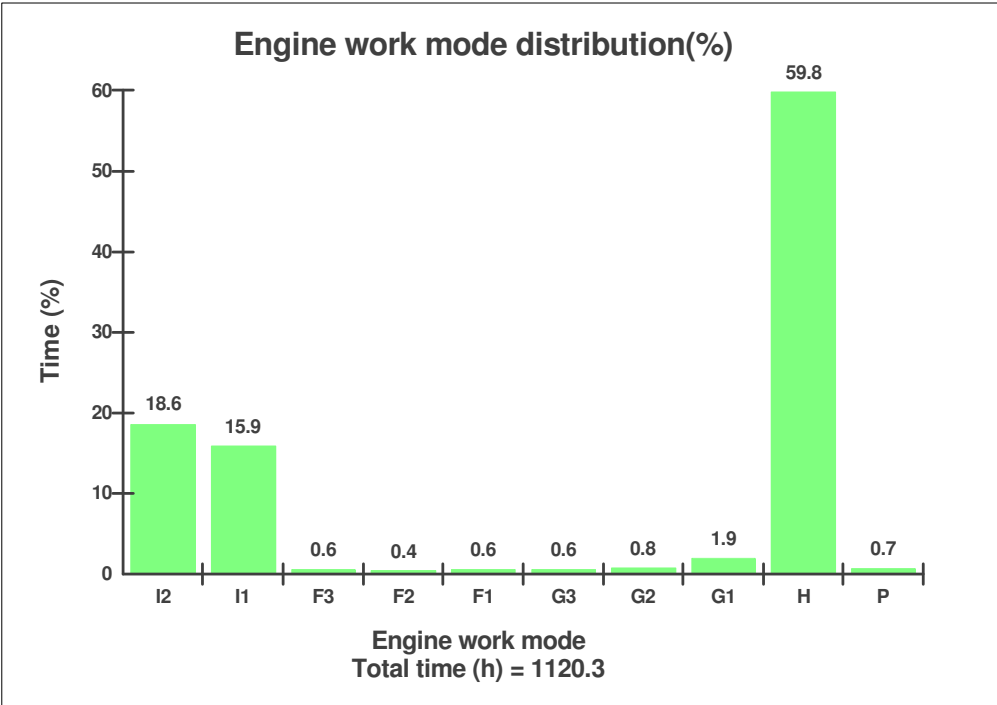
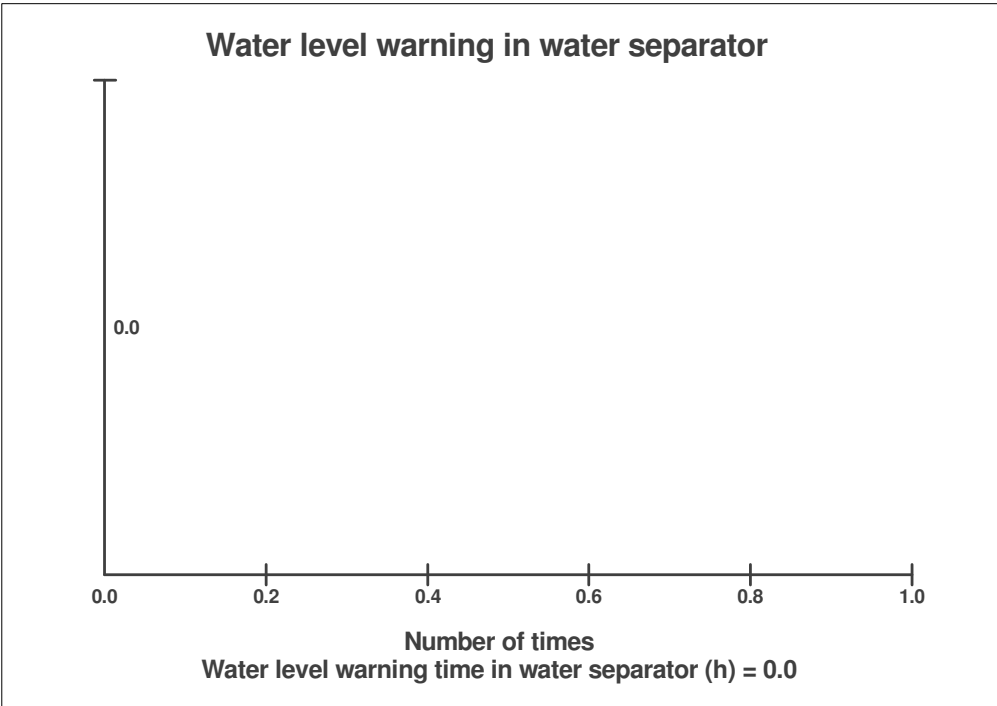
Machine model EC140C	Serial no 110193	Operating hours 1147.9	Reading date 13/07/2013	Page 8
-------------------------	---------------------	---------------------------	----------------------------	-----------



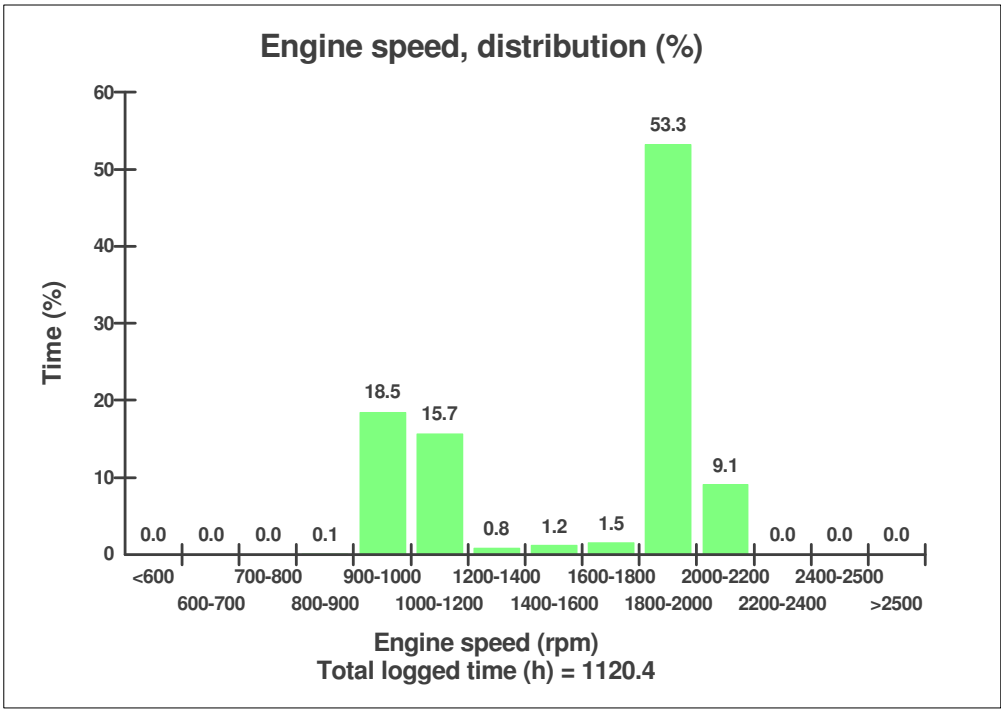
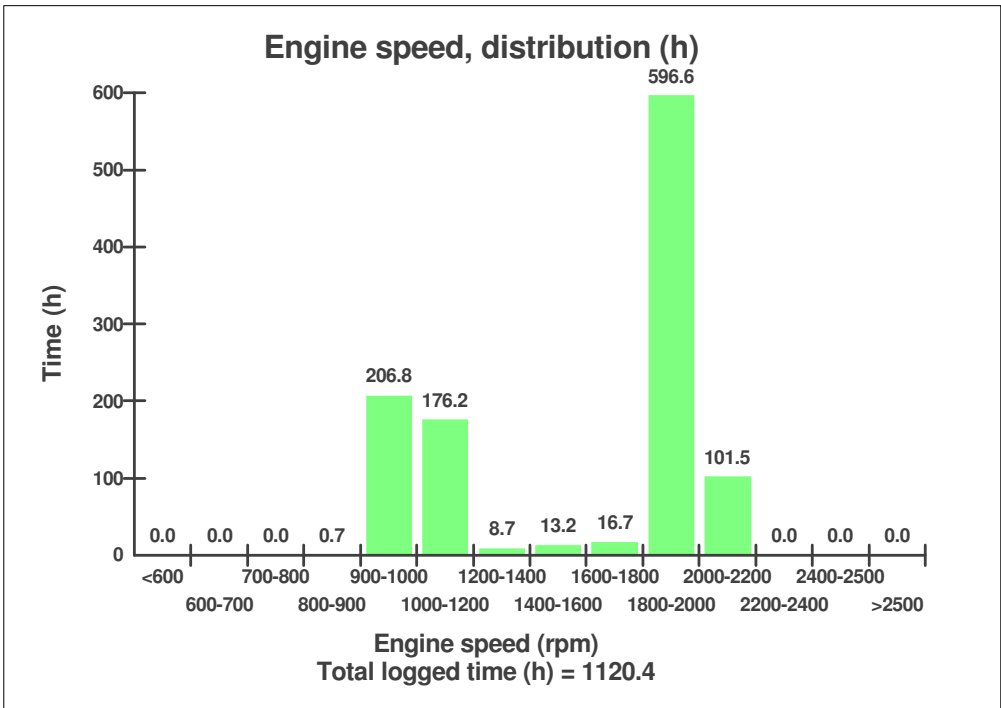
Machine model EC140C	Serial no 110193	Operating hours 1147.9	Reading date 13/07/2013	Page 9
-------------------------	---------------------	---------------------------	----------------------------	-----------



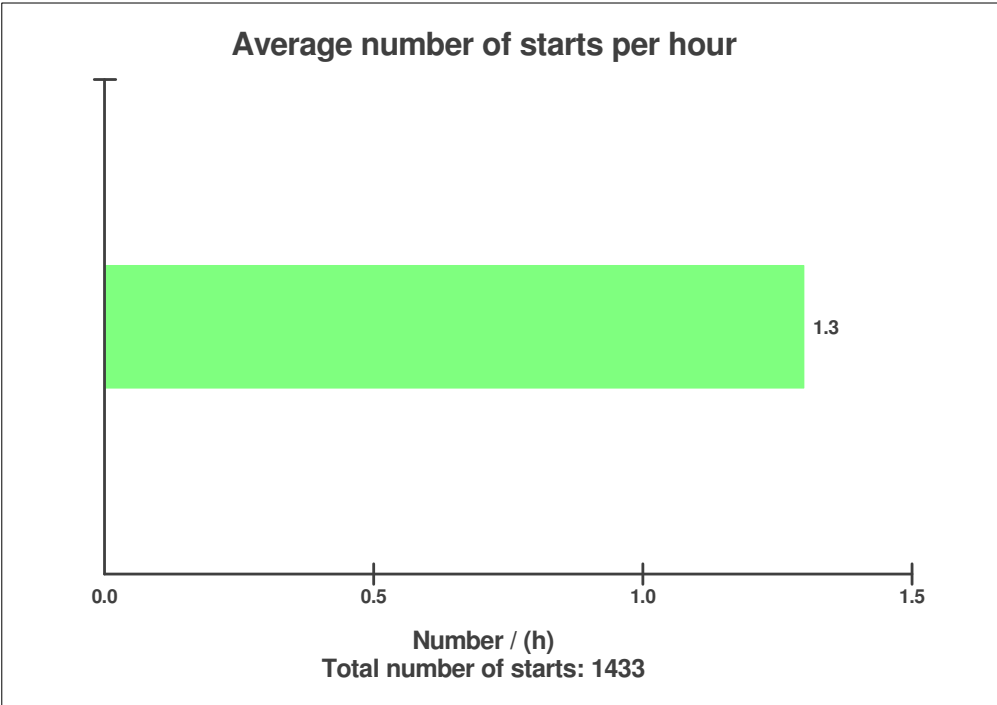
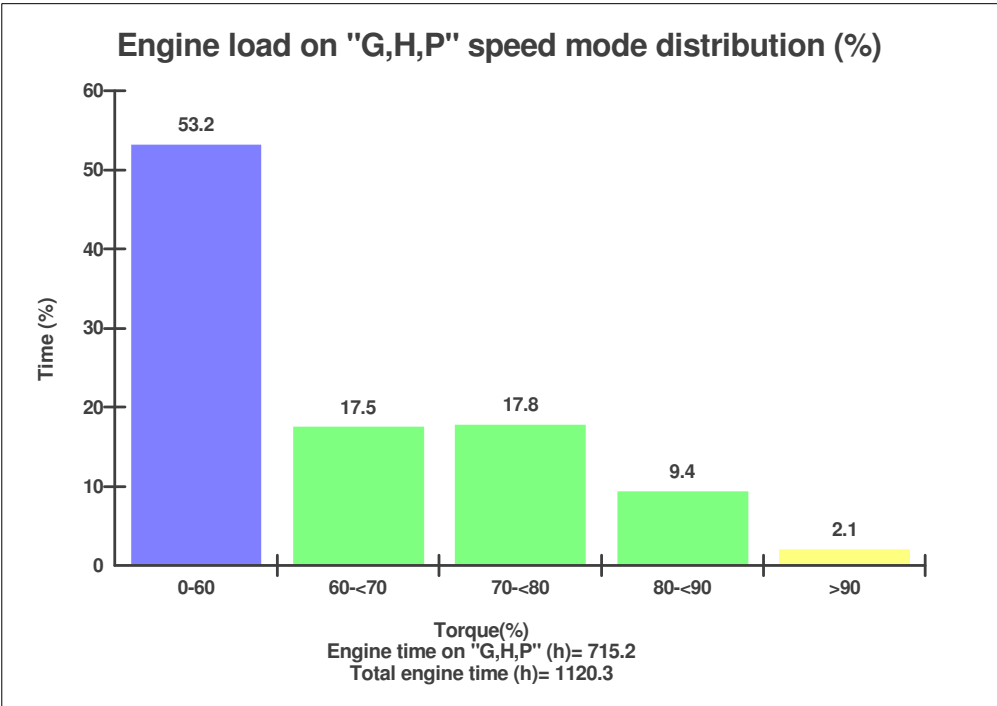
Machine model EC140C	Serial no 110193	Operating hours 1147.9	Reading date 13/07/2013	Page 10
-------------------------	---------------------	---------------------------	----------------------------	------------



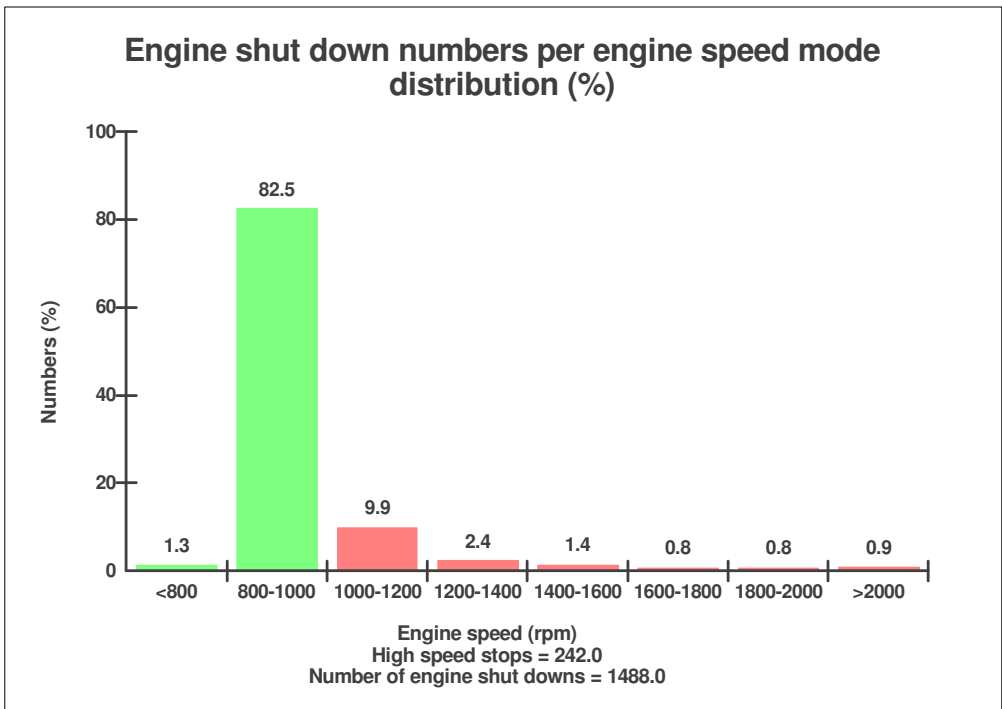
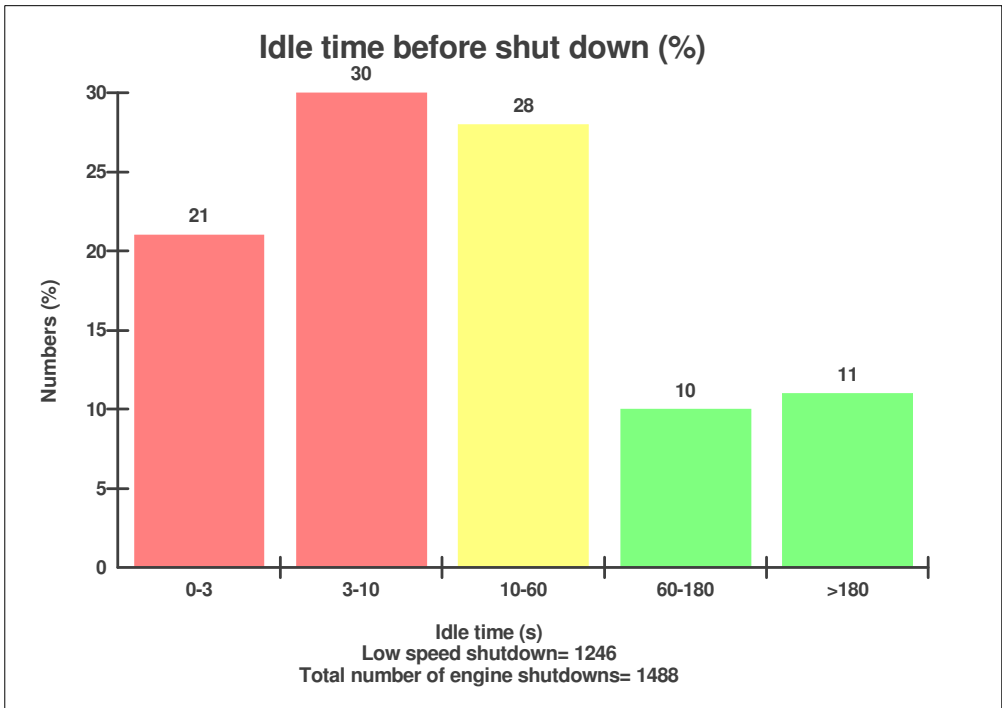
Machine model EC140C	Serial no 110193	Operating hours 1147.9	Reading date 13/07/2013	Page 11
-------------------------	---------------------	---------------------------	----------------------------	------------



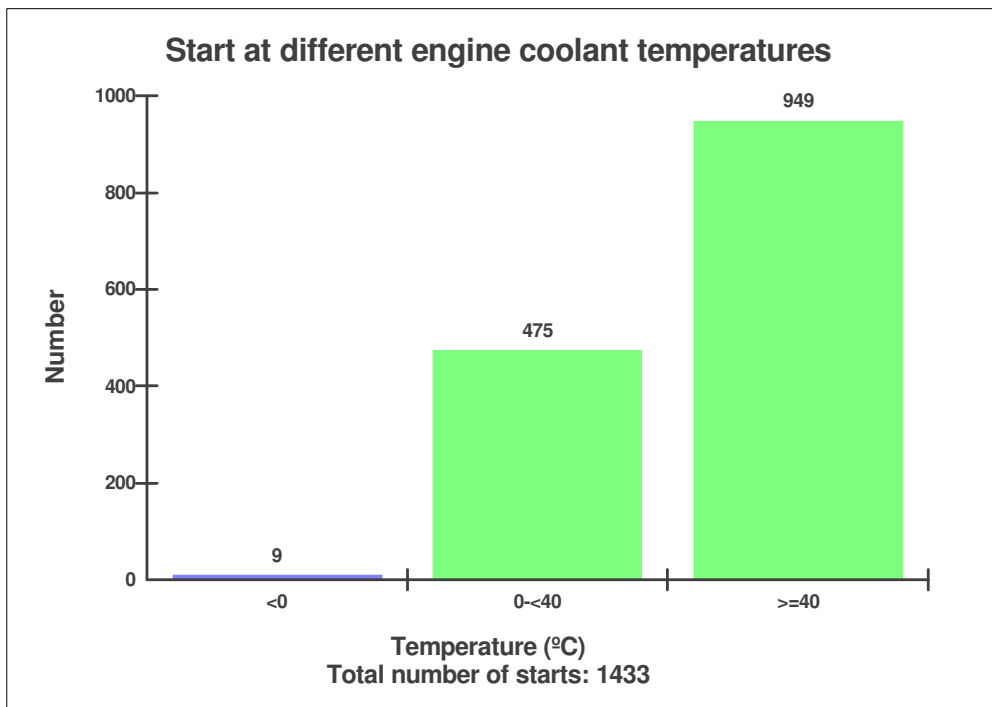
Machine model EC140C	Serial no 110193	Operating hours 1147.9	Reading date 13/07/2013	Page 12
-------------------------	---------------------	---------------------------	----------------------------	------------



Machine model EC140C	Serial no 110193	Operating hours 1147.9	Reading date 13/07/2013	Page 13
-------------------------	---------------------	---------------------------	----------------------------	------------



Machine model EC140C	Serial no 110193	Operating hours 1147.9	Reading date 13/07/2013	Page 14
-------------------------	---------------------	---------------------------	----------------------------	------------



Machine model EC140C	Serial no 110193	Operating hours 1147.9	Reading date 13/07/2013	Page 15
-------------------------	---------------------	---------------------------	----------------------------	------------

Low coolant level

Total number of occurrences = 0

	Op hours	Year	Month	Day	Hour	Minute	Duration (sec)
*	0	2000	0	0	0	0	0
*	0	2000	0	0	0	0	0
*	0	2000	0	0	0	0	0
*	0	2000	0	0	0	0	0
*	0	2000	0	0	0	0	0
*	0	2000	0	0	0	0	0
*	0	2000	0	0	0	0	0
*	0	2000	0	0	0	0	0
*	0	2000	0	0	0	0	0
*	0	2000	0	0	0	0	0
*	0	2000	0	0	0	0	0
*	0	2000	0	0	0	0	0
*	0	2000	0	0	0	0	0
*	0	2000	0	0	0	0	0
*	0	2000	0	0	0	0	0
*	0	2000	0	0	0	0	0
*	0	2000	0	0	0	0	0
*	0	2000	0	0	0	0	0
*	0	2000	0	0	0	0	0
*	0	2000	0	0	0	0	0
*	0	2000	0	0	0	0	0
*	0	2000	0	0	0	0	0
*	0	2000	0	0	0	0	0



Machine model EC140C	Serial no 110193	Operating hours 1147.9	Reading date 13/07/2013	Page 16
-------------------------	---------------------	---------------------------	----------------------------	------------

Low engine oil level at start
Total number of occurrences = 2

	Op hours	Year	Month	Day	Hour	Minute
*	0	2000	0	0	0	0
*	0	2000	0	0	0	0
*	0	2000	0	0	0	0
*	0	2000	0	0	0	0
*	0	2000	0	0	0	0
*	0	2000	0	0	0	0
*	0	2000	0	0	0	0
*	0	2000	0	0	0	0
*	0	2000	0	0	0	0
*	0	2000	0	0	0	0
*	0	2000	0	0	0	0
*	0	2000	0	0	0	0
*	0	2000	0	0	0	0
*	0	2000	0	0	0	0
*	0	2000	0	0	0	0
*	0	2000	0	0	0	0
*	0	2000	0	0	0	0
*	0	2000	0	0	0	0
*	0	2000	0	0	0	0
*	0	2000	0	0	0	0
*	0	2000	0	0	0	0
*	601	2012	2	16	12	53
*	642	2012	2	25	12	52



Machine model EC140C	Serial no 110193	Operating hours 1147.9	Reading date 13/07/2013	Page 17
-------------------------	---------------------	---------------------------	----------------------------	------------

Low Engine Oil Pressure
Total number of occurrences = 0

Op hours	Year	Month	Day	Hour	Minute	Duration (sec)	Extreme (bar)
* 0	2000	0	0	0	0	0	0
* 0	2000	0	0	0	0	0	0
* 0	2000	0	0	0	0	0	0
* 0	2000	0	0	0	0	0	0
* 0	2000	0	0	0	0	0	0
* 0	2000	0	0	0	0	0	0
* 0	2000	0	0	0	0	0	0
* 0	2000	0	0	0	0	0	0
* 0	2000	0	0	0	0	0	0
* 0	2000	0	0	0	0	0	0
* 0	2000	0	0	0	0	0	0
* 0	2000	0	0	0	0	0	0
* 0	2000	0	0	0	0	0	0
* 0	2000	0	0	0	0	0	0
* 0	2000	0	0	0	0	0	0
* 0	2000	0	0	0	0	0	0
* 0	2000	0	0	0	0	0	0
* 0	2000	0	0	0	0	0	0
* 0	2000	0	0	0	0	0	0
* 0	2000	0	0	0	0	0	0



Machine model EC140C	Serial no 110193	Operating hours 1147.9	Reading date 13/07/2013	Page 18
-------------------------	---------------------	---------------------------	----------------------------	------------

Low Air filter pressure

Total number of occurrences = 0

Op hours	Year	Month	Day	Hour	Minute	Duration (sec)
0	2000	0	0	0	0	0
0	2000	0	0	0	0	0
0	2000	0	0	0	0	0
0	2000	0	0	0	0	0
0	2000	0	0	0	0	0
0	2000	0	0	0	0	0
0	2000	0	0	0	0	0
0	2000	0	0	0	0	0
0	2000	0	0	0	0	0
0	2000	0	0	0	0	0
0	2000	0	0	0	0	0
0	2000	0	0	0	0	0
0	2000	0	0	0	0	0
0	2000	0	0	0	0	0
0	2000	0	0	0	0	0
0	2000	0	0	0	0	0
0	2000	0	0	0	0	0
0	2000	0	0	0	0	0
0	2000	0	0	0	0	0
0	2000	0	0	0	0	0
0	2000	0	0	0	0	0
0	2000	0	0	0	0	0
0	2000	0	0	0	0	0
0	2000	0	0	0	0	0
0	2000	0	0	0	0	0
0	2000	0	0	0	0	0



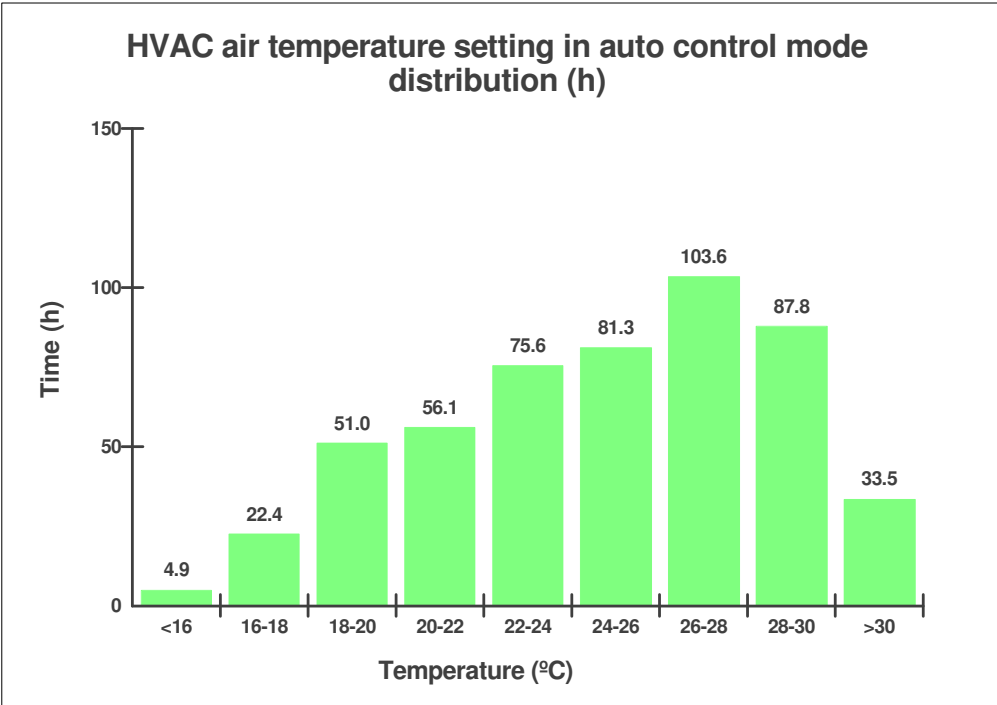
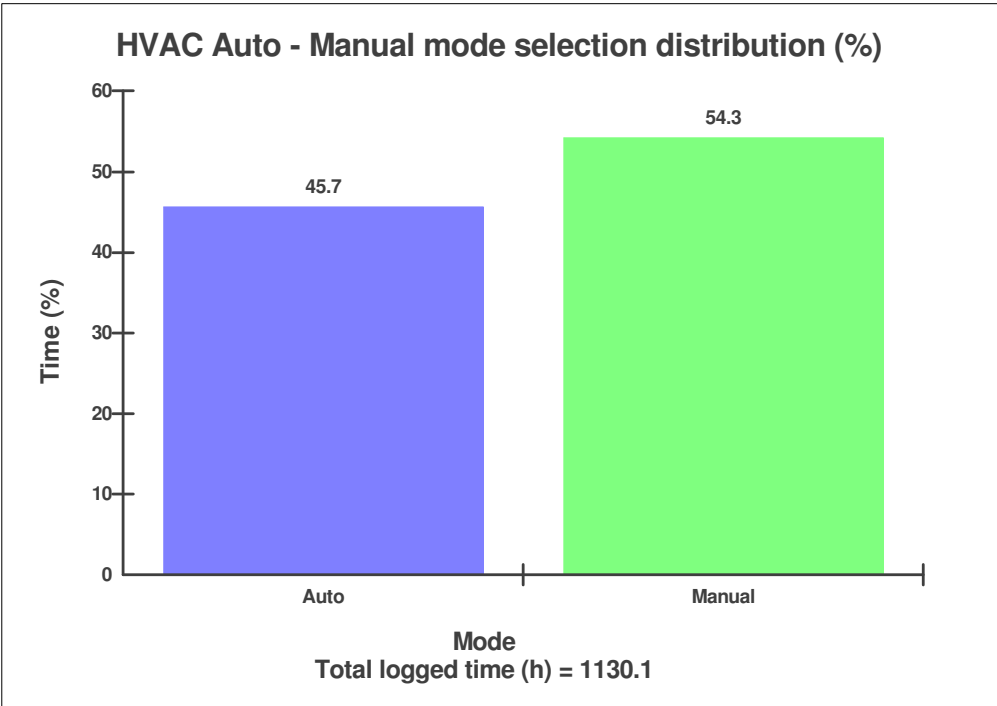
Machine model EC140C	Serial no 110193	Operating hours 1147.9	Reading date 13/07/2013	Page 19
-------------------------	---------------------	---------------------------	----------------------------	------------

High Charge air temperature
Total number of occurrences = 0

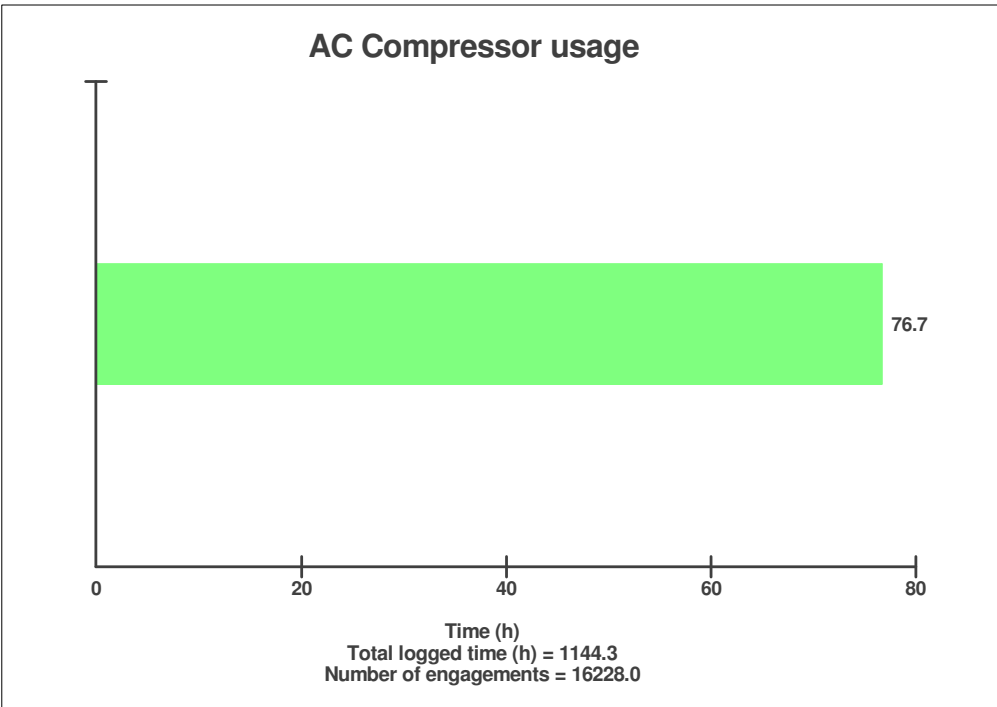
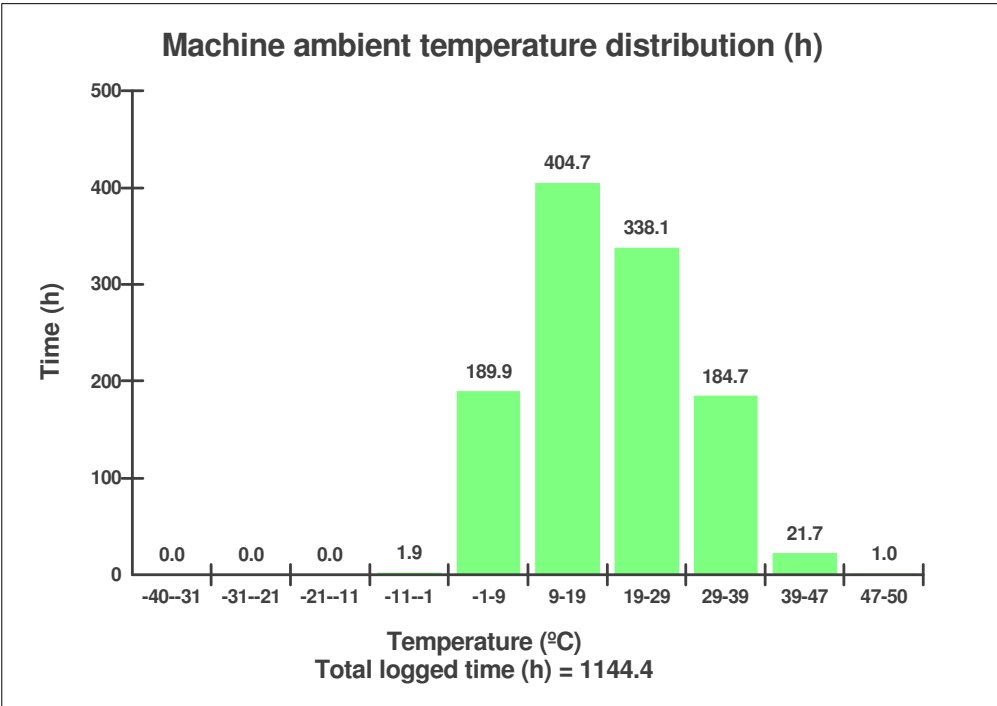
Op hours	Year	Month	Day	Hour	Minute	Duration (sec)	Extreme (°C)
0	2000	0	0	0	0	0	0
0	2000	0	0	0	0	0	0
0	2000	0	0	0	0	0	0
0	2000	0	0	0	0	0	0
0	2000	0	0	0	0	0	0
0	2000	0	0	0	0	0	0
0	2000	0	0	0	0	0	0
0	2000	0	0	0	0	0	0
0	2000	0	0	0	0	0	0
0	2000	0	0	0	0	0	0
0	2000	0	0	0	0	0	0
0	2000	0	0	0	0	0	0
0	2000	0	0	0	0	0	0
0	2000	0	0	0	0	0	0
0	2000	0	0	0	0	0	0
0	2000	0	0	0	0	0	0
0	2000	0	0	0	0	0	0
0	2000	0	0	0	0	0	0
0	2000	0	0	0	0	0	0
0	2000	0	0	0	0	0	0
0	2000	0	0	0	0	0	0
0	2000	0	0	0	0	0	0
0	2000	0	0	0	0	0	0
0	2000	0	0	0	0	0	0



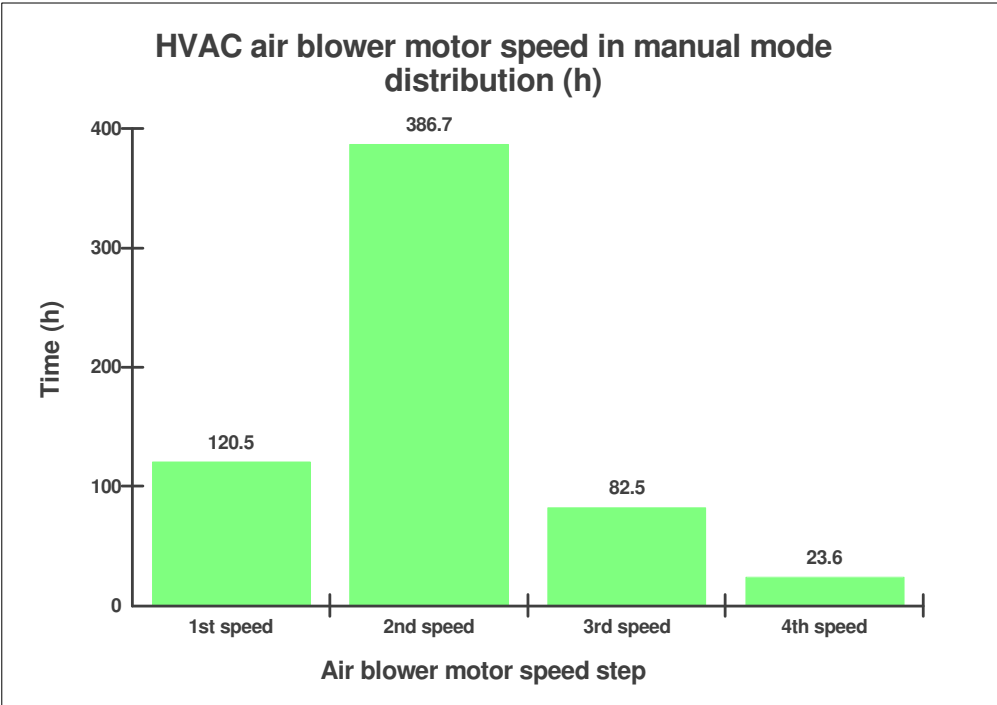
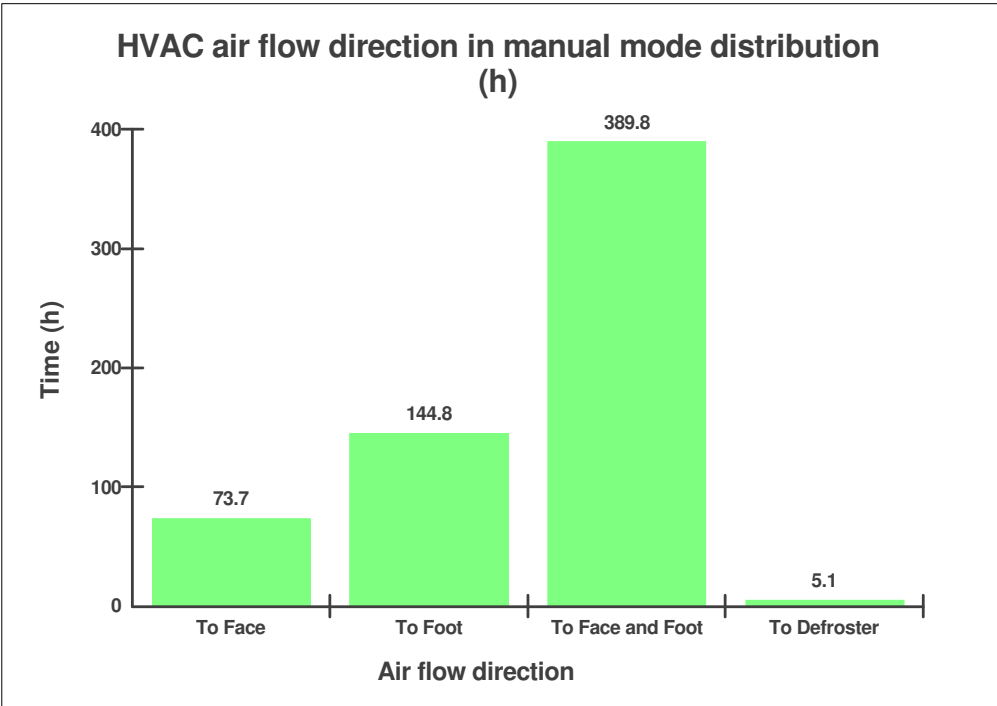
Machine model EC140C	Serial no 110193	Operating hours 1147.9	Reading date 13/07/2013	Page 20
-------------------------	---------------------	---------------------------	----------------------------	------------



Machine model EC140C	Serial no 110193	Operating hours 1147.9	Reading date 13/07/2013	Page 21
-------------------------	---------------------	---------------------------	----------------------------	------------



Machine model EC140C	Serial no 110193	Operating hours 1147.9	Reading date 13/07/2013	Page 22
-------------------------	---------------------	---------------------------	----------------------------	------------



Machine model EC140C	Serial no 110193	Operating hours 1147.9	Reading date 13/07/2013	Page 23
-------------------------	---------------------	---------------------------	----------------------------	------------

AC High Pressure

Total number of occurences = 0

Op hours	Year	Month	Day	Hour	Minute	Duration (sec)	Extreme (°C)
0	2000	0	0	0	0	0	0
0	2000	0	0	0	0	0	0
0	2000	0	0	0	0	0	0
0	2000	0	0	0	0	0	0
0	2000	0	0	0	0	0	0
0	2000	0	0	0	0	0	0
0	2000	0	0	0	0	0	0
0	2000	0	0	0	0	0	0
0	2000	0	0	0	0	0	0
0	2000	0	0	0	0	0	0
0	2000	0	0	0	0	0	0
0	2000	0	0	0	0	0	0
0	2000	0	0	0	0	0	0
0	2000	0	0	0	0	0	0
0	2000	0	0	0	0	0	0
0	2000	0	0	0	0	0	0
0	2000	0	0	0	0	0	0
0	2000	0	0	0	0	0	0
0	2000	0	0	0	0	0	0
0	2000	0	0	0	0	0	0
0	2000	0	0	0	0	0	0
0	2000	0	0	0	0	0	0



Machine model EC140C	Serial no 110193	Operating hours 1147.9	Reading date 13/07/2013	Page 24
-------------------------	---------------------	---------------------------	----------------------------	------------

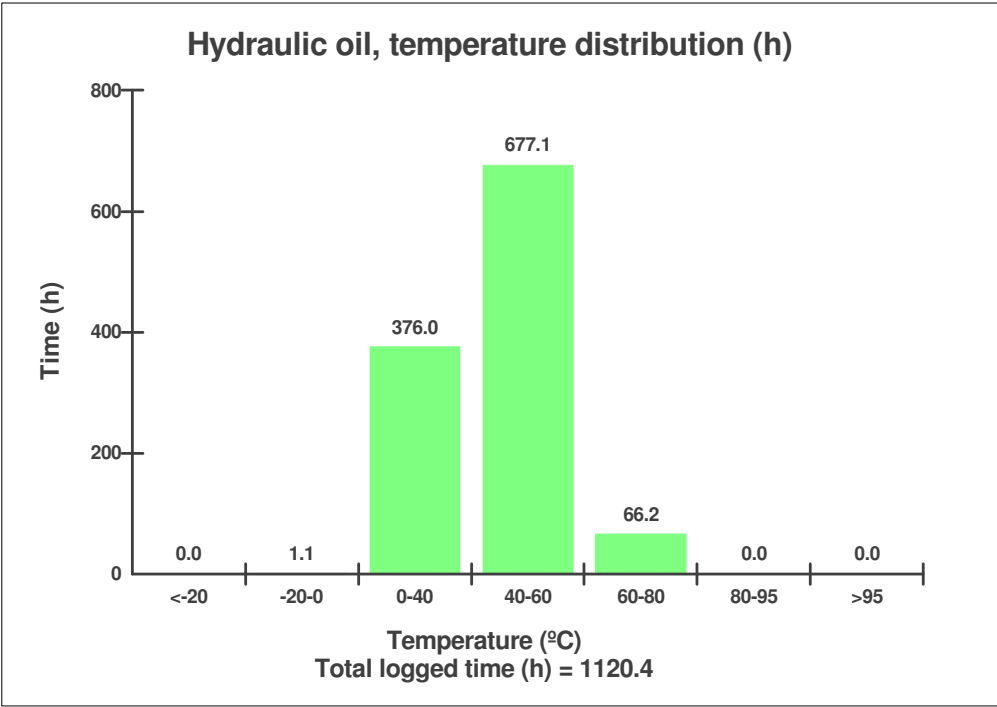
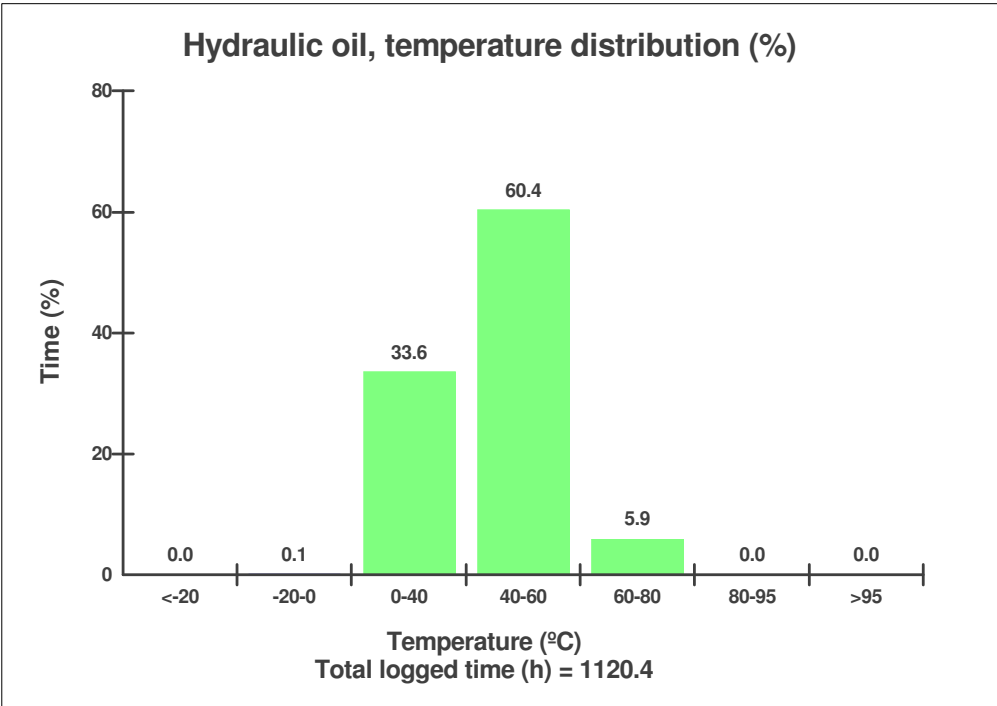
AC Boiling Protection

Number of engagements = 0

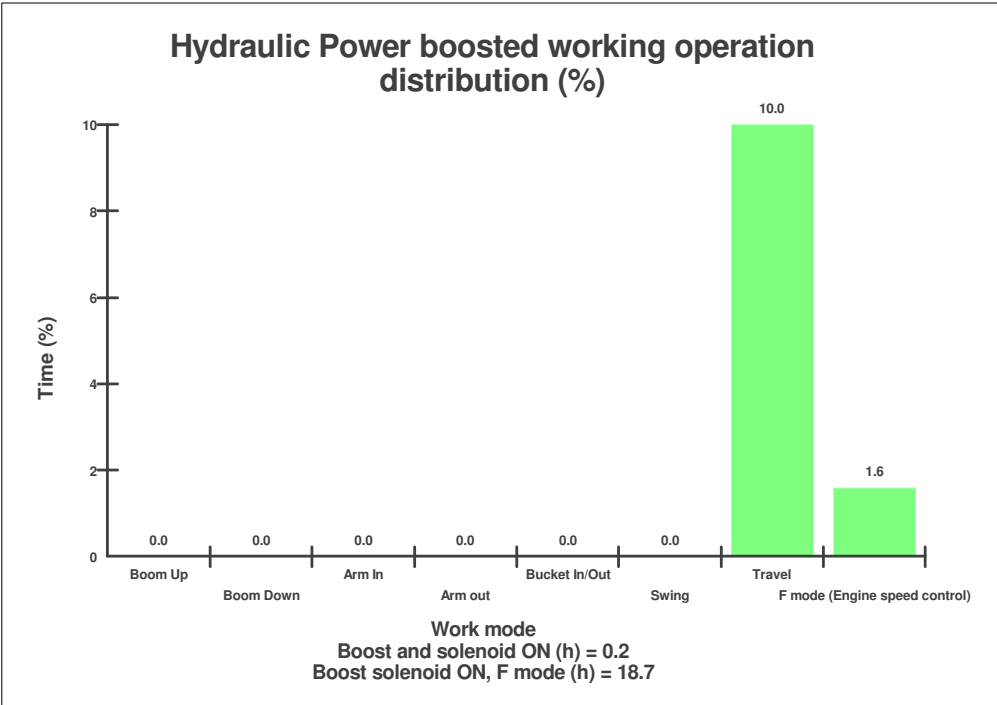
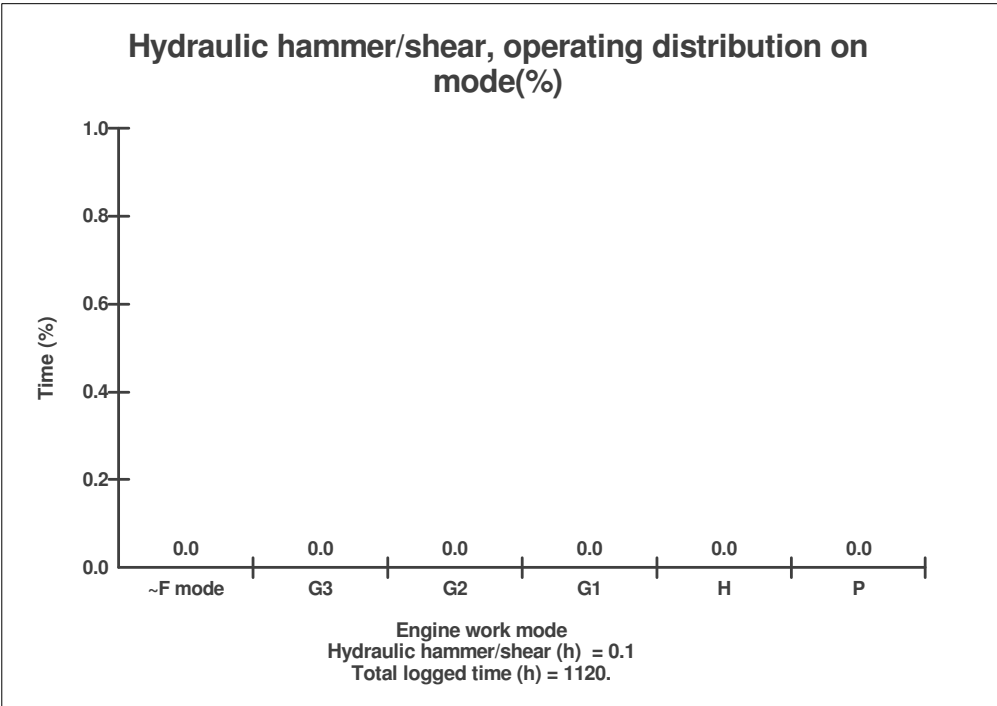
Op hours	Year	Month	Day	Hour	Minute	Duration (sec)	Extreme (°C)
0	2000	0	0	0	0	0	0
0	2000	0	0	0	0	0	0
0	2000	0	0	0	0	0	0
0	2000	0	0	0	0	0	0
0	2000	0	0	0	0	0	0
0	2000	0	0	0	0	0	0
0	2000	0	0	0	0	0	0
0	2000	0	0	0	0	0	0
0	2000	0	0	0	0	0	0
0	2000	0	0	0	0	0	0
0	2000	0	0	0	0	0	0
0	2000	0	0	0	0	0	0
0	2000	0	0	0	0	0	0
0	2000	0	0	0	0	0	0
0	2000	0	0	0	0	0	0
0	2000	0	0	0	0	0	0
0	2000	0	0	0	0	0	0
0	2000	0	0	0	0	0	0
0	2000	0	0	0	0	0	0
0	2000	0	0	0	0	0	0
0	2000	0	0	0	0	0	0
0	2000	0	0	0	0	0	0
0	2000	0	0	0	0	0	0



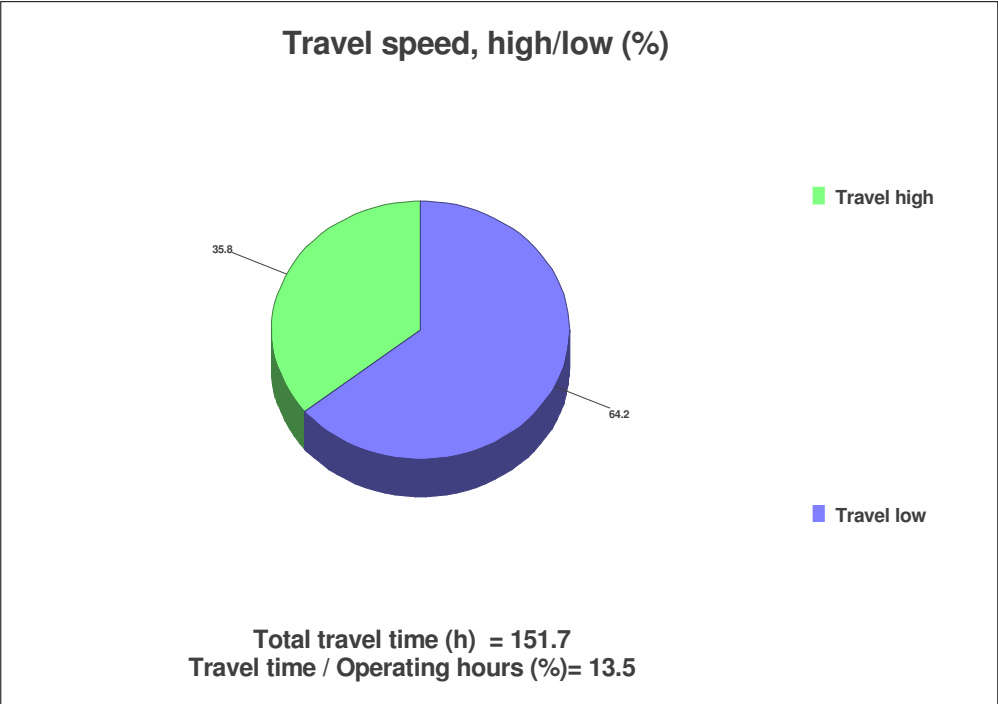
Machine model EC140C	Serial no 110193	Operating hours 1147.9	Reading date 13/07/2013	Page 26
-------------------------	---------------------	---------------------------	----------------------------	------------



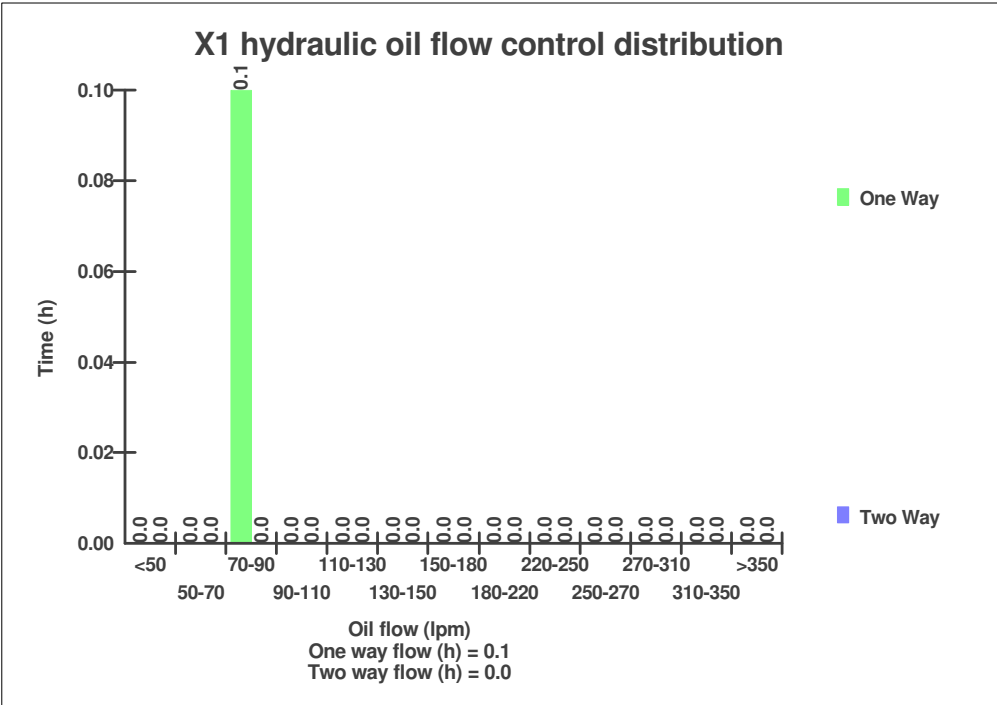
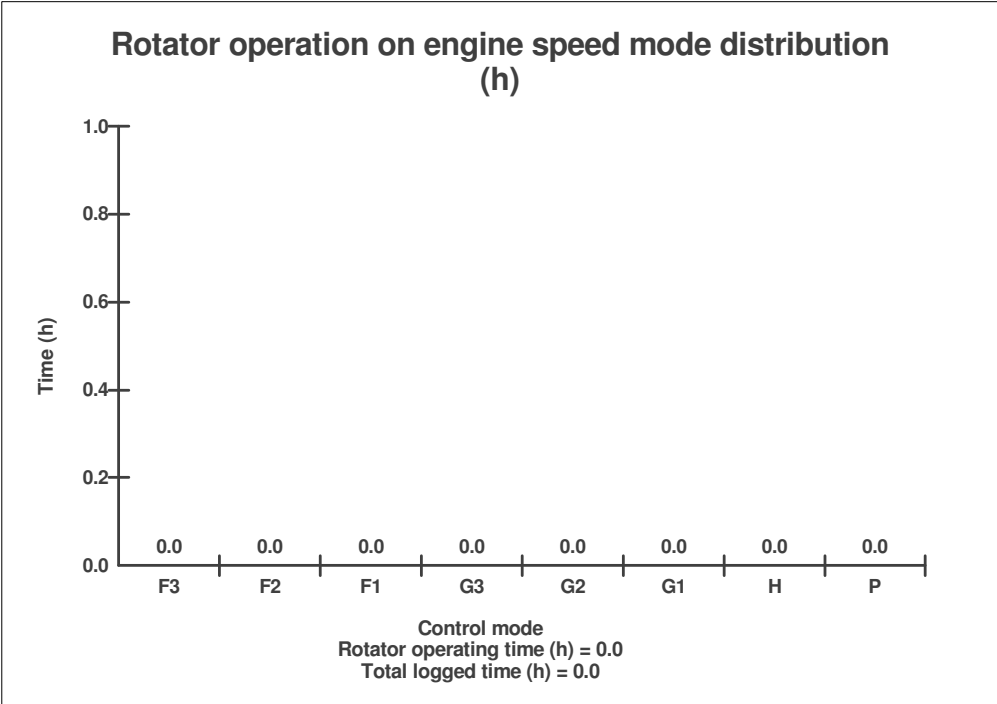
Machine model EC140C	Serial no 110193	Operating hours 1147.9	Reading date 13/07/2013	Page 27
-------------------------	---------------------	---------------------------	----------------------------	------------



Machine model EC140C	Serial no 110193	Operating hours 1147.9	Reading date 13/07/2013	Page 28
-------------------------	---------------------	---------------------------	----------------------------	------------



Machine model EC140C	Serial no 110193	Operating hours 1147.9	Reading date 13/07/2013	Page 30
-------------------------	---------------------	---------------------------	----------------------------	------------



Machine model EC140C	Serial no 110193	Operating hours 1147.9	Reading date 13/07/2013	Page 31
-------------------------	---------------------	---------------------------	----------------------------	------------

