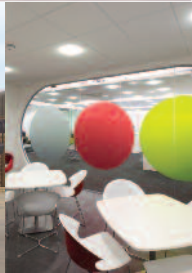
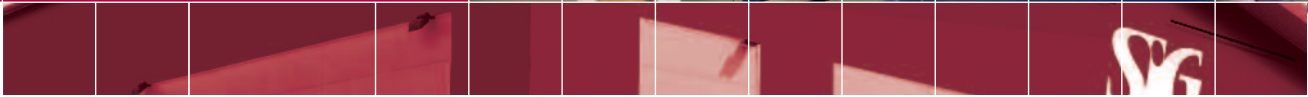
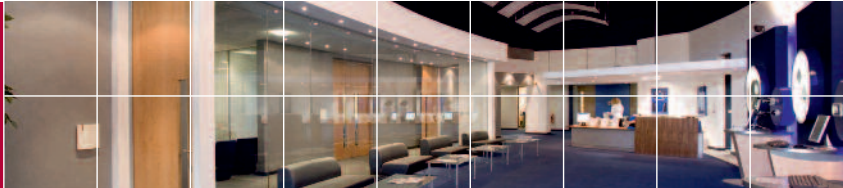




Construction's Specialist Solution

➔ SIG UK



FOCUS, SPECIALISATION AND SERVICE

➤ Contents

4 Why Choose SIG?

6 Energy Management

8 Enabling Works & Substructure

10 Structure, Cladding & Curtain Walling

12 First & Second Fix

14 Roofing & Roofline

16 Finishing & Interiors

18 Education Case Study

19 Health Case Study

20 Commercial Case Study

22 Residential Case Study

24 Innovation & Awards

26 Corporate Responsibility

28 National Credentials, Local Support

30 SIG UK Group Businesses

32 An International Supplier

34 Services at a Glance



Rolls House, London



Construction's Specialist Solution

SIG plc is a leading European distributor of specialist construction materials.

From groundworks to the roof and everything in-between, SIG delivers the full range of specialist building materials for your construction project, nationwide.

SIG can bring expert knowledge in specialist products to individual market sectors;

- Education
- Health
- Commercial & Industrial
- Residential, including Social Housing
- Renovation, Maintenance & Improvement

The following information will provide you with an overview of our capabilities in all build stages and relevance to the construction market sectors.

➤ Our market specialisations include:

- Energy Management
- Insulation & Dry Lining
- Interiors
- Roofing & Roofline
- Acoustics & Vibration
- Construction Accessories
- Fixings & Power Tools

➤ Why Choose SIG?

Every day thousands of customers across the UK enjoy the benefits of working with SIG. From the expertise offered by our individual specialist companies, through to National Supply Chain Partnerships with consolidated deliveries and consistent, reliable levels of service from our UK branch network.

Whatever and wherever the project may be, a partnership with SIG allows you to draw upon an extensive product range, a mature and experienced logistics network, impartial and informed technical solutions, value engineering – and most importantly, SIG's greatest asset – a team of reliable and dedicated people.

➤ **Early engagement with SIG is key. Involving us in the early stages of your project means that we can value-engineer your designs to develop practical and cost-effective solutions from the very start.**



Southmead Hospital, Bristol

Local Sourcing, Nationwide

SIG is the only specialist products distributor with a truly nationwide presence. With over 300 branches across the UK, you will be able to access our products quickly and easily for efficiency, and locally to reduce mileage.

One Source; Save Time, Money & the Environment

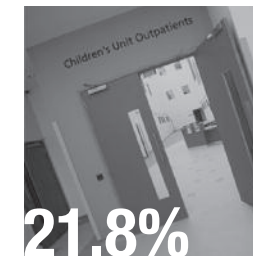
Our range and depth of products means that you can source a huge amount of specialist materials from one place.

Education



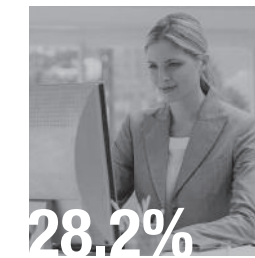
34.8%
on a project value of
£23 million

Health



21.8%
on a project value of
£150 million

Commercial



28.2%
on a project value of
£260 million

Residential



31.1%
on a project value of
£30 million

*Based on analysis conducted in August 2011.

What does this mean for you?

- Improved efficiency in terms of placing and managing orders.
- Reduced part-load deliveries to lower the carbon footprint of the project.
- Receive build packages in full, when needed, so your workforce can get on with the job.
- Local consolidation sites can carry stock for your site to reduce mileage and enable timely deliveries.
- We can manage and co-ordinate your deliveries, which all means less hassle for you.

Creating Value in the Supply Chain

- Access to quality manufacturers and leading brands in the industry.
- Establishing Supply Chain Partnerships to ensure reliable supply and best value from the Supply Chain.
- Working with manufacturers to deliver the best solution for you.
- We break bulk from manufacturers. Order directly from us for what you need, in the right quantities, when you need it; this improves your cash flow while minimal stock on site means reduced risk of theft and no storage issues.

Practical Solutions

- **Impartial specialist knowledge from industry experts**
- **Design input and innovation**
- **Up-to-date knowledge of Building Regulations and legislation to ensure compliance**
- **Quality products**

Flexible & Reliable

- **Thousands of quality products in stock, ensuring reliable supply**
- **Nationwide branches; we have the stock and infrastructure to deal with the unexpected**

KEY FACTS:

748 trading sites
Operations in 16 countries
11,400 employees

➔ Energy Management

SIG adopts a 'fabric first' approach to energy management and the reduction of the carbon footprint of buildings. Once the fabric of the building is well insulated and airtight, SIG can supply a comprehensive range of renewable energy and innovative construction products for commercial and residential buildings. We offer impartial expertise across our entire product range, ensuring you install the right solution to fulfil your particular needs.

Realistic sustainable solutions

We recognise that businesses and consumers are increasingly seeking to minimise their impact on the environment but don't want to sacrifice their quality and ease of life.

SIG promotes the idea of realistic, practical solutions.

Our key services

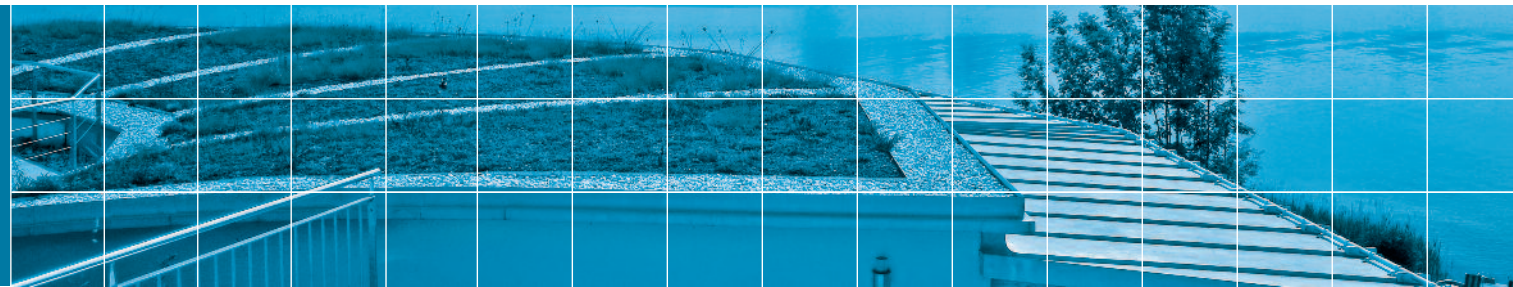
- Practical energy management advice to the construction professional and consumer
- Installation of cavity wall and loft insulation; new build and retro-fit
- Installation of renewable technologies
- Installation of building management systems
- Thermal scanning to identify areas of building heat loss
- Expert advice on all aspects of our extensive, market-leading product range



➔ SIG is a Green Deal provider and encourages a 'fabric' first approach to energy management

➔ Key Products

- Loft and Cavity Wall Insulation
- Windows
- Insulated Concrete Formwork (ICF)
- Structural Insulated Panel Systems (SIPS)
- Solar PV Systems
- Solar Heating Systems
- Air Source Heat Pumps
- Ground Source Heat Pumps
- Underfloor Heating
- Living Walls
- Green Roofs
- LED Lighting
- Air Handling
- Voltage Optimisation
- Building Management Systems
- Building Integrated PV (BIPV)



Insulation Fitting

Dearne Valley local authority aimed to reduce its CO₂ emissions to enable it to become the lowest carbon community of its type in the UK. An initiative was launched in Brampton Bierlow using the local community centre as a demonstrator property for energy efficiency measures in the home. The Community Centre showcases energy efficiency techniques, so that the local community can see them in action.

The SIG Energy Management implementation programme works in 5 stages:

1. Use of innovative thermal imaging technology and a computer modelling to see where energy is being lost.
2. Prioritise the housing stock to decide where to best allocate funding.
3. Develop a personalised package using a range of energy efficiency measures
4. Implementation from start to finish of energy saving measures;
 - Solar PV Panels
 - Solar Thermal Hot Water Panels
 - Air Source Heat Pump Central Heating System
 - External Wall Insulation
 - Voltage Optimisation
 - Double Glazing
5. Monitor remotely the housing stock after installation to assess if further energy savings can be made. The program provides a complete energy efficiency management solution, identifying the most cost effective and appropriate measures, while taking funding into account. Uniquely, the scheme closes the loop in the supply and installation process by remotely monitoring the performance of the solution once the project has been completed.

➔ Enabling Works & Substructure

Engaging with us in the early stages of your Development means we can value-engineer designs using the best combination of products for a total build solution. SIG's experts in waterproofing, formwork, geotextiles, construction chemicals, masonry support and drainage, are there to support you from the start.

For suitable projects we can establish a Consolidation Site at one of our nationwide branches, so consumable products are on-tap throughout the project.

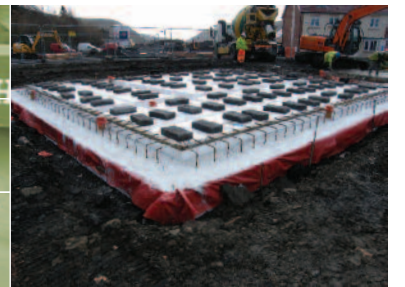
Our key services

- **Guidance on Building Regulations compliance**
- **Bespoke, specialist solutions & manufacture**
- **Design services**
- **Pre-fabrication services**
- **Geotechnical consultancy**
- **Public Indemnity Insurance Cover**



➔ Key Products

- Ground Protection
- Groundwork Engineering
- Geotextiles
- Formwork & Accessories
- Steel Reinforcement
- Insulated Foundation Systems
- Insulated Concrete Formwork
- Grouts & Anchors
- Construction Accessories
- Construction Chemicals
- Waterproofing
- Concrete Repair
- Fixings
- Power Tools & Accessories
- Hand Tools



Aware of the proven performance benefits and efficiency gains Insulslab SFRC* could deliver, Davies Developments looked to use the innovative raft-based system in place of a traditional raft technique, at its Parc Aberaman housing development in Aberdare, South Wales.

In consultation with the technical support team at Insulslab SFRC, Davies Developments undertook a careful cost comparison exercise, which confirmed the revolutionary system would facilitate overall cost savings on foundation construction. Once on-site, this also translated into tangible time savings, with concrete slabs being cast and delivered up to ground floor level in half the time of standard methods.

Matthews Davies, Director, Davies Developments, explains: "We were extremely impressed by the responsiveness and accuracy of the technical team at Insulslab SFRC. Their structural engineers were exact in their calculations, which meant the cost savings we were promised on paper were realised once the foundations were constructed on-site.

"These savings were further increased by the time saved – Insulslab SFRC took only one week to construct a slab compared with the two weeks it would take to build a traditional raft. As well as helping us to complete the build ahead of schedule, Insulslab SFRC ultimately halved the labour cost on the foundations. We will definitely be considering Insulslab SFRC in future wherever site conditions permit."

Achieving very low U-values, Insulslab SFRC makes it easier to achieve Part L compliance and facilitates greater flexibility in the overall building envelope.

*Exclusive to SIG.

SFRC = Steel Fibre Reinforced Concrete

Mogden Treatment Works, West London

➤ Structure, Cladding & Curtain Walling

With Building Regulations and legislation becoming ever-more demanding, SIG can support you with compliance.

As specialists in our product areas, we offer expertise across the build packages. SIG offers you more than products alone.

Through SIG, you have access to all the leading brand products in the industry. We can give independent advice on the most suitable, cost-effective products for your particular project, while meeting your design specification.

For structurally demanding projects such as towers, SIG can supply steel support products and project management services for your masonry package.

Our key services

- Guidance on Building Regulations compliance
- Bespoke, specialist solutions & manufacture
- Design services
- Pre-fabrication services
- SAP, SBEM and U-value calculations
- Air tightness testing
- Thermal bridging and interstitial condensation analysis
- Carbon calculations
- Pull-out testing on-site
- Hand-Arm Vibration Syndrome (HAVS) management & advice



➤ Key Products

- Masonry Support & Reinforcement
- Masonry Components
- Steel Support Systems
- Formwork & Accessories
- Pre Cast
- Architectural Fixings
- Ventilation
- Acoustics
- Cladding & Render
- Glazing Products
- Glass Fascias
- Windows
- Fixings, Adhesives, Fillers & Tapes



Building products manufacturer Steadmans, part of SIG, has supplied materials for a vineyard in the town made famous by TV series Last of the Summer Wine.

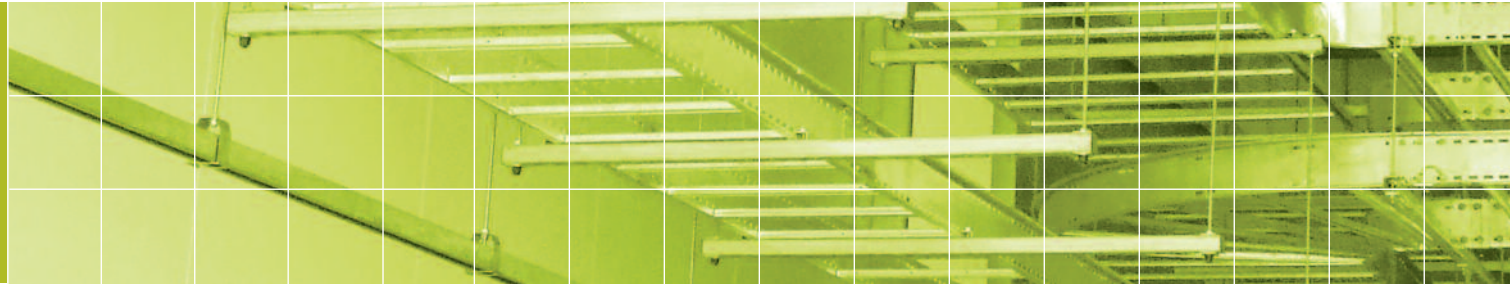
The winery incorporates over 250 square metres of Steadmans' AS35 insulated steel cladding finished in olive green - 80mm thick panels on the roof and 60mm panels in its walls. Steadmans also supplied all galvanised C-section framing, flashings and personnel access doors for the project, from its range of products suiting the contractor requiring a one stop shop.

Howard Ashton-Jones, managing director, Premier Steel Buildings, said: "When the client for the Holmfirth project made clear they wanted a structure meeting the specification for a heated building, I had no hesitation in nominating them. The Steadmans panels combine cladding and insulation, so they made the construction easy and give a clean, fresh, white appearance to the building's interior. They have a substantial feel which, for me, creates proper buildings.

This provides designers with an environmentally-responsible product, with excellent thermal performance and a predicted service life of 40 years.

Southmead Hospital, Bristol

➤ First & Second Fix



Copyright RSC, photo Peter Cook

SIG offers the whole package. With a full range of options, from fire-rated insulation and drywall, to interior partitions and suspended ceilings, you can conveniently source the entire interior fix package from one place. The breadth and depth of products available from SIG means that we can pull together a package to meet your specification in a cost-effective, co-ordinated, stress-free way.

With commercial buildings, especially hotels, management of acoustics and vibration is particularly important. Our specialists in acoustics and vibration management can advise on the best specification to suit your client's needs, while meeting the latest Building Regulations.

Our key services

- Acoustics & vibration consultancy
- Guidance on Building Regulations compliance
- Bespoke, specialist solutions & manufacture
- Design services
- Pre-fabrication services
- SAP, SBEM and U-value calculations
- Air tightness testing
- Thermal bridging and interstitial condensation analysis
- Carbon calculations
- Speedline plasterboard recycling service



**SPTS Technologies Limited,
Newport**

➤ Key Products

- Acoustic Materials
- Anti-Vibration Products
- Mechanical and Electrical
- Integrated Plumbing Systems (IPS)
- Floating Floor Treatment (FFT)
- Insulation
- Fixings & Anchors
- Dry Lining
- Metal Studding
- Partition Systems
- Plastering Components
- Raised Access Flooring
- Suspended Ceilings



Media City, Manchester

The Royal Shakespeare Theatre in Stratford-upon-Avon has undergone an ambitious £112m project to install a brand new auditorium inside the skeleton of the art-deco original. One of the most important aspects of the project was to ensure that theatre performances were not disturbed by noise from other parts of the building. In particular, the gantry – from where scenery changes and lighting are managed.

CMS Acoustics* High Impact Mat was installed in the gantry. It is a durable, environmentally friendly floor covering that reduces excess sound, prevents unwanted noise and has excellent impact reduction. 573m² of blue, 10mm thick CMS High Impact Mat was fitted onto wooden, concrete and screeded floor areas in the theatre gantry.

As a non-reflective, slip and tear resistant material that meets the highest safety standards, it provides a safe surface for an area of the theatre where there is constant movement of scenery, people and heavy lighting.

CMS High Impact Mat also has other qualities which made it the preferred specification for this refurbishment. As well as providing high acoustic performance, it offers an aesthetic, 'final floor finish' which is warm underfoot and has anti-fatigue properties. It creates an attractive, comfortable and quiet working environment in the gantry, as well as contributing to the quality finish that runs throughout the theatre.

*Now CMS-Danskin

➔ Roofing & Roofline

The roof of any building is so much more than a covering. At SIG we can design modern roof solutions into every aspect of the roofing industry for Residential, Commercial and Industrial buildings, as well as supplying building plastics, re engineered timber & composite windows, door and conservatories.

In addition to waterproofing and insulating a roof can help capture carbon, generate power, provide a green space and living zones, manage and harvest rainwater and provide a natural and biodiverse wildlife habitat. All of these credentials can facilitate the planning approval process.

With many years of expertise in all aspects of roofing, SIG is the perfect partner to ensure your roof delivers:

- **Optimum performance**
- **Sustainable credentials**
- **Inspirational design**
- **Innovative product solutions**

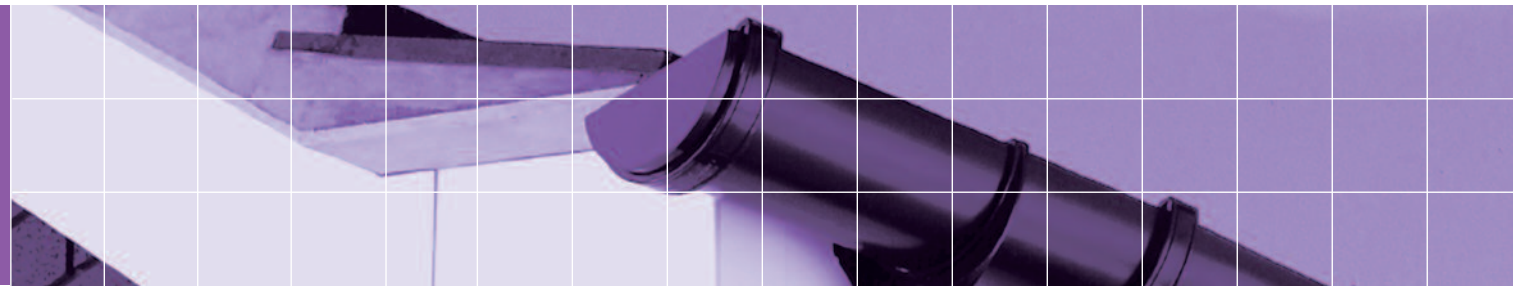
As well as offering over 40,000 roofing products and ancillaries our Design & Technology business can offer complete roofing systems backed with Professional Indemnity Insurance and full system guarantees for your peace-of-mind. Additionally, this gives SIG flexibility, freedom and independence when designing the roof. We can supply the best roofing solution with the best combination of products from the best manufacturers.

Our key services

- **Complete roofing systems backed with Professional Indemnity Insurance and full system guarantees**
- **Managing the Supply Chain**
- **Design & regulatory guidance**
- **Contractor training & development schemes**

➔ Key Products

- Pitched Roof Systems
- Roof Slates & Coverings
- Flat Roof Systems
- Structural Insulated Panel Systems (SIPS)
- Green Roofs
- Solar PV
- Sun Tubes & Skylights
- Roofing Accessories
- Insulation
- Roofline
- Soffits & Fascias
- Above & below ground drainage
- Chimneys



The brief was to find a solution for lost green 'roof' space on one of the UK's largest Private Finance Initiatives, Hadley Learning Community Complex.

This 16-hectare, state-of-the-art education centre, which brings together nursery, primary, secondary and community education facilities is now a Telford landmark.

SIG provided 14,000m² of its high quality, flagship membranes Rhepanol[®] fk and Rhepanol[®] hg for the flat roof areas of the mammoth two storey project. One of the major priorities was keeping the roof maintenance free for the maximum possible length of time.

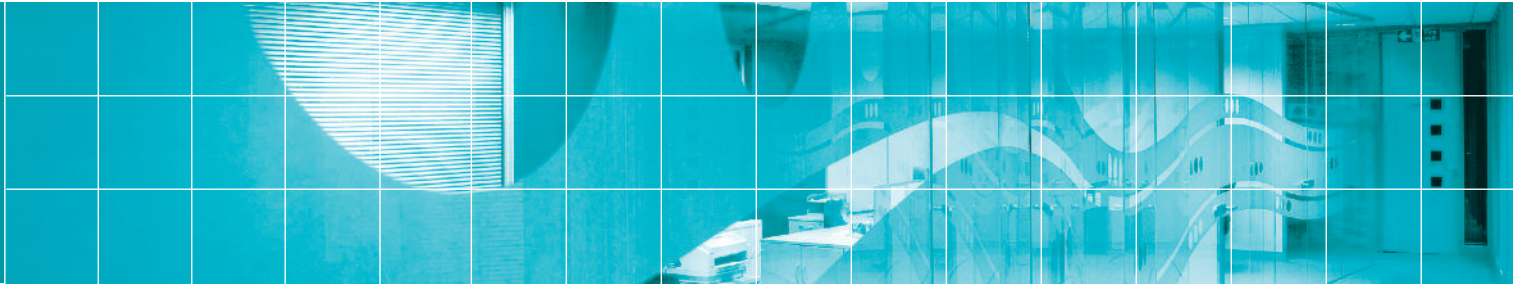
SIG Design & Technology's approved installers fitted 12,000 m² of Rhepanol[®] fk on nine roof areas and an additional 2,000m² of Rhepanol[®] hg were installed to two featured green roofs, to keep them watertight and root-resistant. These were made up of Rhepanol[®] hg, a drainage layer, soil substrate and a planted layer of sedum.

Specifying Rhepanol allowed the project to demonstrate clear eco-credentials across all 14,000 m² of roof space:

- Made from PIB, Rhepanol (fk and hg) is the world's most environmentally friendly single ply membrane.
- BBA has confirmed that Rhepanol roofs offer life expectancy of up to 40 years.
- Rhepanol hg does not allow penetration by roots or rhizomes.
- The sedum roofs maximise membrane life, help insulate the building, assist urban drainage, capture carbon and provide for biodiversity.
- A photovoltaic system helps generate energy.

SIGA Natural Slate

➔ **Finishing & Landscaping**



SIG also supplies your interior finishing products. Partitions, ceilings, doors and floor coverings are all available, together with fixing accessories, plus site protection materials to keep décor clean and damage-free.

We can even help you get the drainage and stabilisation of the ground right for exterior landscaping.

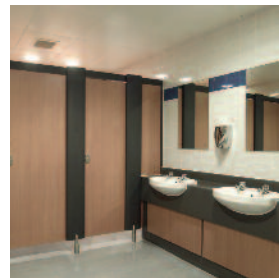
Through to the very end of your project, we supply all your specialist construction products and provide the expertise and support you demand from your building materials partner.

Our key services

- Experienced fit-out technical support
- Design & visualisation services
- Dedicated estimating services
- Specialist glass processing and installation
- Colour sampling service



RNLI College, Poole, Dorset



➔ **Key Products**

- Ceilings
- Partitions
- Washrooms
- Doors
- Ironmongery
- Carpets, Floor Coverings & Accessories
- Site Protection
- Lighting & Blinds
- Stabilising Geotextiles
- Gabions



Inexus Head Office, Capital Quarter Business Park, Cardiff

CPD, part of SIG, supplied MG Group Interiors with Tenon Vitrage partitions for their new Headquarters in Liverpool. Serviced by a local branch, MG benefited from CPD's logistical expertise thereby 'just-in-time' deliveries could be co-ordinated to ensure the installation process ran smoothly and efficiently to meet the prescribed deadline.

A curved aluminium frame was created to form the wall, with a bespoke 'goldfish bowl' glass wall along the length of the office break-out area. This unique solution creates a feeling of open space with unhindered vision across the office while maintaining privacy, pushing the boundaries of design and acting as the perfect showcase for MG's services.

Close communication within the supply chain was key to ensuring the successful delivery of the curved wall. With a delivery deadline that left no room to manoeuvre, all the elements of the feature wall needed to be correct to the nearest millimetre to ensure that at the final fit-out stage, everything came together.

Case Studies

Education

As part of a significant investment programme in school buildings, Redland Green School in Bristol benefited from a major new build development, designed to deliver one of the most modern, state of the art learning environments in the South West.

The building design incorporated 'The Street', an architectural vision that aimed to inspire learning but posed a reverberation challenge. Malcolm D'Crus, project architect at BDP, explains: "The Street was designed to be the main area where pupils would congregate, but it contained lots of hard surfaces. Without taking preventative measures, the noise level would have been unacceptable."

However, because the acoustic treatment was to be detailed later on in the development, it was critical that it should integrate well with the interior environment.

The fully bespoke CMS SuperPhon Acoustic Wall Panels were identified as the most effective solution to meet all of the project requirements.

Manufactured by CMS Acoustic* Solutions, SuperPhon panels reduce noise by absorbing sound at the surface, combining these impressive acoustic capabilities with an aesthetically appealing woven textile finish.

At Redland Green, more than 200 panels were precision installed on the upper half of the walls, throughout the 100m x 5m Street. They were used in 32 different sizes, each at 25mm thick and covered in coloured fabric designed to integrate the panels into the scheme's overall design.

Providing an effective means of controlling reverberation time and reflected sound in rooms, SuperPhon is ideal for use in educational buildings with the interior environment staying true to the architectural vision.

*Now CMS-Danskin

➔ **SIG can provide Acoustic testing for Educational buildings to meet BB93 regulations.**



Redland Green School, Bristol

Health



Queen Elizabeth Hospital, Birmingham

In 2006 Balfour Beatty were appointed to build a new teaching hospital in Birmingham, part of a programme of work totalling a £600m development on an existing hospital site. The project was one of the largest PFI hospital contracts ever awarded, and it involved a complex build on a site that would remain in use throughout the five year build program.

Early on in the process Balfour Beatty reviewed the product packages that would be needed on the hospital build. They identified an opportunity to consolidate a number of these packages into a single supply route.

SIG had been negotiating on a number of separate product ranges, covering insulation, drylining, suspended ceiling systems, performance doors, and demountable partition systems.

SIG was invited by Balfour Beatty to discuss the opportunity to manage these packages under a single arrangement. This was agreed, and allowed a much closer liaison between the parties involved in the project, and early resolution of challenges as they occurred.

One example was that SIG ensured the correct matching of interfaces (doors to walls, walls to ceilings) before building began, and on occasions innovations were introduced to speed up the installation process.

The programme of work included 3 mental health buildings and the singular largest Acute Health new build project outside of London. The project was handed over in phases commencing March 2008 and was finally fully occupied in September 2011. The handovers amounted to some 40 phases, all of which were handed over on time with 3 being up to a year ahead of schedule.

Commenting on the experience of working with SIG, Roger Frost, Project Director, said, "We found SIG to be a professional partner who understood our needs, and the challenges of delivering to a complex work site in the middle of a residential area. They worked with us both on site, and at our offsite fabrication facility in Wednesbury, to ensure that materials were delivered on time and to specification. Their attention to detail was exemplary and we are looking to build on our experiences from this project in order to continue developing our relationship on to other schemes."

➔ **"We found SIG to be a professional partner who understood our needs, and the challenges of delivering to a complex work site in the middle of a residential area"**

➤ Case Studies

Commercial

HSBC's Southport branch is housed in a truly beautiful grade two listed Victorian building, with the interior dominated by majestic high ceilings and elaborate stonework.

While the overall building cannot fail to impress with its Victorian style and architectural grandeur, as a functioning working environment it is a challenging location to maintain. When HSBC decided to renovate the interior of the bank to create four private meeting rooms within the main area of the branch, architects EC Harris LLP were faced with a number of issues. Not only did HSBC not want to hinder the natural appeal of the building's interior, the ways in which private rooms could be constructed were severely restricted by the overall height of the main banking hall.

"We initially discussed our requirements with CPD and explained the challenge that faced us," said Fourway's Adam Nolan. "This soon led us to engage with Dave Sheppard, CPD's glass and glazing specialist, who immediately understood the issues and set about the task of designing a viable working solution.

"With no top fixings possible, clearly a freestanding option was the only way forward. Dave was soon on site and with his detailed survey the project soon started to take shape," Nolan explained.



HSBC Southport

Dave recommended CPD's flagship Tenon Vitrage single glazed partitioning system – the only fully self-supporting glass partition product that can be independently secured to the floor. The freestanding glass panels maximised light and preserved the atmosphere and grandeur of the building, whilst ensuring that the meeting rooms were set away from the main banking hall to retain the required degree of privacy and practicality.

The dividing walls, which incorporate aluminium frames to which doors could be attached, allowed each meeting room to be independently secured, with frosted manifestation to deliver the required discreet, semi-enclosed meeting areas. Nolan asserts that it was not only the product, but the ease by which it was installed that made the project such a success.

"One of the key requirements was that the bank had to remain fully operational during business hours," explained Nolan, "which meant that the delivery of the solution had to be incredibly efficient.

"CPD planned staged deliveries to site to help us achieve a more efficient, more predictable build programme. This helped us to deliver the project on time and on budget, while optimising the performance of our own team as they knew exactly what needed to be done and when.

➤ "The finished article looks sleek," concludes Nolan, "and the customer is delighted with the result."



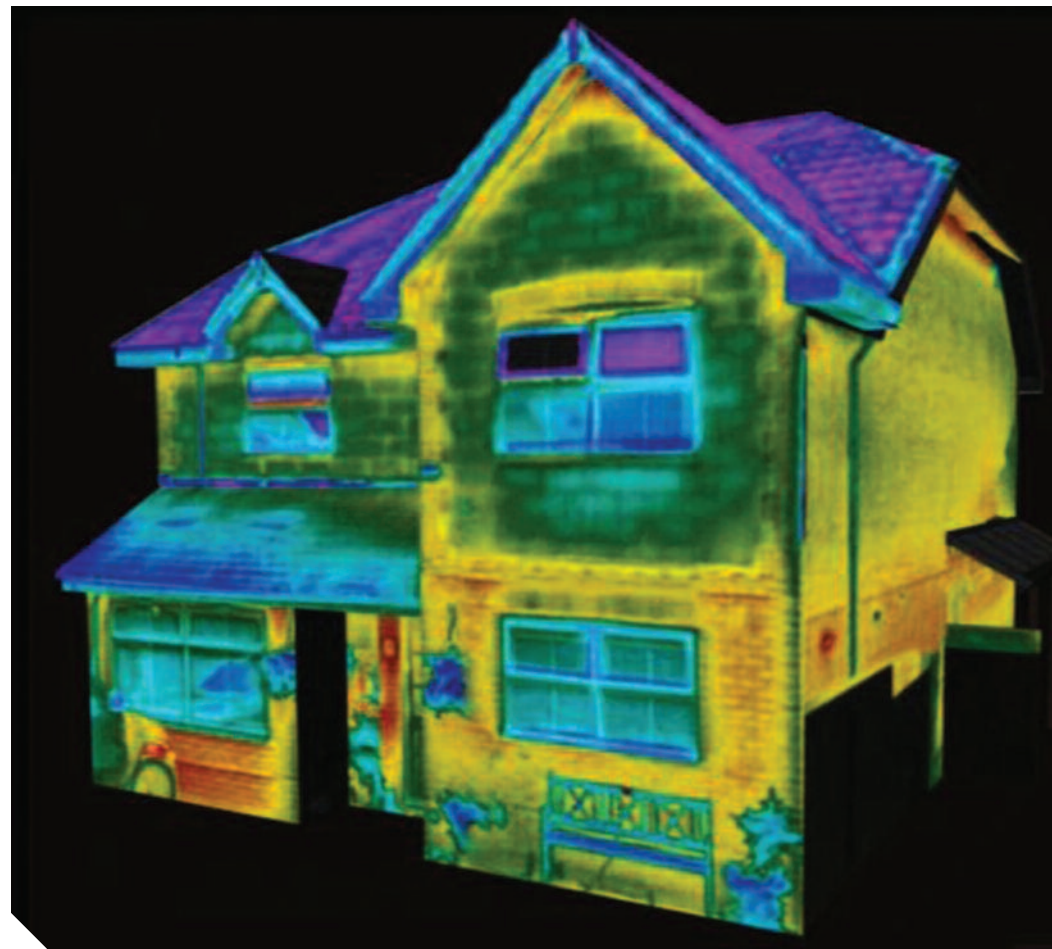
HSBC Southport

Case Studies

Residential

The Scottish Federation of Housing Associations (SFHA) is the representative body for housing associations across Scotland, and is widely recognised as playing a major role in shaping and driving housing policy and procedure.

With the Scottish Government setting stringent reduction targets to reduce greenhouse gas emissions by 42 percent by 2020, the SFHA launched the Carbon Portal Project – a social housing improvement initiative designed to reduce CO₂ emissions from Scotland's housing stock and tackle fuel poverty for thousands of social housing tenants. This groundbreaking initiative sees SIG Energy Management delivering a full-cycle energy efficiency programme for 30,000 properties managed by housing associations within the SFHA.



Thermal Imaging Technology



Solar Panel Installation

The project is unique in Scotland and unprecedented on such a scale. It will be implemented in five key stages:

1. Thermographic surveys will be conducted to collect thermal imaging data on each of the 30,000 houses
2. Data gathered will be analysed by SIG Energy Management and the SFHA to identify the most inefficient properties
3. Installation of efficiency measures, utilising funding where available from CERT

(Carbon Emissions Reduction Target) and CESP (Community Energy Saving Programme)

4. Further thermographic surveys and data analysis will be undertaken to determine efficiency improvements and CO₂ reduction
5. Data will be published on an online portal (www.carbon-portal.co.uk) to provide information to housing associations wishing to learn more about the project

➔ The first of its kind in the UK, the Carbon Portal Project embodies the principles of collaborative working between industry, government and the public. The ambition is that it becomes the blueprint for improving the sustainability of our housing stock.

➔ Innovation & Awards

SIG is more than a supplier of specialist construction products. We are at the forefront of product innovation. Our own brand product ranges deliver this innovation and are the result of considerable investment by SIG to create products that meet increasingly stringent building regulations and legislation.

Hand Arm Vibration Laboratory VJ Technology

Run by industry expert Dr Tom Gunston, the Southampton based VJT Laboratory has dedicated facilities for testing hand arm vibration, RCS dust, and the performance of anchors, drill bits and drilling machines.

Using a pioneering photographic technique the VJT Laboratory has the ability to show the dust created by drilling and cutting that cannot normally be seen. Working with power tool manufacturers the efficiency of various dust suppression and capture systems can now be evaluated.



HAVS Laboratory

Insulslab

The SIG Insulations Insul brand has been developed to include Insulwall and the award winning Insulslab.

Insulslab SFRC is a high quality foundation system that is suitable for use on a wide range of soil types. When compared to traditional methods of concrete foundation production for new housing developments such as beam and block and raft foundations, Insulslab SFRC is quicker to install, more environmentally friendly, offers high thermal performance and significant cost savings.

The Insulslab SFRC system is based on a type of raft foundation which comprises a number of interlocking polystyrene pods, forming a substantially rigid 'waffle' shaped slab. Steel fibre reinforced concrete is poured over the top to form the Insulslab SFRC foundation.



Insulslab Installation



SIG Energy Management Insight Programme

An innovative programme which manages the improvement of energy efficiency of existing housing stock. Our programme is all-encompassing, from analysis of the buildings, through to installation of practical solutions:

1. Review and analysis of the energy performance of current housing stock
2. Prioritisation of the poorest performing houses for immediate attention
3. Tailored product and funding solutions
4. Project management of implementation, including actual installation
5. Monitor the results

For more information, please see pages 7 and 22 for case studies.



Insight Programme - The Ann Rhodes Community Centre

Speedline Plasterboard Recycling Service



As the UK's largest, specialist distributor of drywall materials, we are currently researching and trialling a complete, fully licensed, mixed plasterboard waste collection, separation, weighing, transfer and disposal service which would also fully utilise our empty delivery vehicles and facilitate our own carbon footprint reduction.

The SIG 360 initiative packages



SIG is offering a new, unique, totally integrated, end to end solution in the provision of energy saving construction products, technical services and support for housebuilders; SIG 360.



Building Awards 2012

'Integrated Supply Chain of the Year' category, Finalist.



Construction News Specialist Awards 2012

'Training' category, Finalist.



Fleet Safety Forum Awards 2012

'Company Driver Safety' category, Shortlisted (SIG Driver of the Year programme).



Safety & Health Practitioner IOSH Awards

'Training Initiative of the Year' finalist 2011. For further information on our Drivers Awards see Health & Safety section on p27.



Building Awards 2011

'Integrated Supply Chain of the Year' category, Finalist.



Construction News Awards 2011

'Product Innovation' category, Finalist (Insulslab).



Homebuilding & Renovating Product Excellence Awards 2011

'Coveted Construction Systems' category, Winner (Insulslab).



Housing Excellence Awards 2010

'Product of the Year' category, Finalist (Insulslab).



Ground Engineering Awards 2010

Ground Engineering Awards 2010, 'Innovation' category, Finalist (Insulslab).

Corporate Responsibility

SIG continually develops its approach to Corporate Responsibility (CR) and is a constituent member of the FTSE4Good index of socially responsible companies. As such, SIG fully recognises its corporate responsibilities to its shareholders, employees, customers and suppliers and is committed to good practice in all its activities.

The company has group-wide ethics and anti-corruption policies to underpin the CR programme and includes broader social and environmental issues in its decision making process to help achieve business goals.

SIG Policies include

- Business Principles and Code of Ethics
- Environment
- Environmental Management
- Energy and Transport
- Carbon Emissions
- Packaging and Waste Reduction
- Waste Management
- Health and Safety
- Community and Donations
- Employee Development
- Road Risk Policy
- Low Carbon Policy

Health and safety

SIG is committed to high standards of health and safety for all of its employees and has in place an Integrated Management System for Health, Safety and Environment, with certification to ISO 14001 (Environment) and OHSAS 18001 (Health and Safety).

Environmental management

We recognise our responsibilities to measure and minimise the waste we generate and have put in place waste segregation arrangements for the purpose of recycling materials across all our businesses. In addition, we have developed close relationships with manufacturers to operate waste take-back schemes for customers for plasterboard (Speedline Recycling), uPVC and glass.

SIG is registered with the UK's CRC Energy Efficiency Scheme in 2010 and in response to the principles of

the Scheme, SIG has committed itself to become a Low Carbon Business through its policies and procedures.

As well as reducing the amount of vehicle fuel used in delivery, SIG has set objectives to increase the energy efficiency of its properties.

Staff training & development

At SIG, we pride ourselves on being able to deliver the best service possible to our customers, whatever the project may be. Having a strong, highly trained and motivated workforce is key to achieving this.

We operate structured training programmes which are tailored to suit our staff's needs and specific job roles.

Courses provided through our Sales Academy have been accredited by a leading professional body – the Institute of Sales and Marketing Management – meaning graduates from these courses will receive nationally recognised qualifications. The Sales Academy initiative was also a finalist in the Specialist Construction Awards 2012.

In addition our HR Organisational Development team have Institute of Leadership and Management (ILM) accredited courses.



KEY FACTS:
36,465 trees saved*

*based on the calculation that one tonne of waste recycled is the equivalent of 17 trees saved.



SIG offers total assurance that the criteria for CR demanded by today's contracts are fully met.

UK Driver of the year awards

This is the latest in a series of initiatives to improve standards of driving across SIG UK's transport operations. SIG commercial drivers take part in a unique driving competition at the state-of-the-art testing facility of MIRA Ltd, the product engineering and research specialist.

The competing finalists – chosen because of their exemplary Key Performance Indicators (KPIs) for safety and fuel economy – undertake a series of complex challenges which test their ability to apply the principles of safe and fuel efficient driving. MIRA's sophisticated testing technology provides in-depth analysis of the results.

While the event rewards individual drivers for their commitment to safety and high standards, it also means that SIG businesses meet the Supply Chain need for fuel economy, efficiency and safety. This annual event promotes best practice, whilst ensuring that our customers' values are firmly instilled in our day-to-day operations.



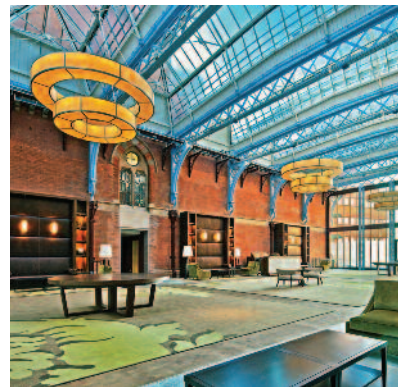
➔ National Credentials, Local Support

Accreditation

In addition to environmental and health and safety accreditation, SIG is also a major company member of the Construction Products Association.

SIG businesses are members of the relevant trade associations in each market sector, with active involvement to lobby government to improve standards and promote best practice.

SIG own-brand products are accredited to energy reduction, fire protection, acoustic performance and sustainability standards where appropriate, ensuring that you receive products which comply with the latest legislation and best practice standards.



St Pancras, London

- ACAD - Asbestos Control and Abatement Division
- AIS - Association of Interior Specialists
- ARCA - Asbestos Removal Contractors Association
- ASFP - Association of Specialist Fire Protection
- ASA - Association of Sealant Applicators
- ACE - Association of Conservation Energy
- BBA - British Board of Agrément
- Carbon Trust Standard
- CIGA - Cavity Insulation Agency
- CFA - Construction Fixings Association
- CHAS - Contractors H&S Assessment Scheme
- Construct - Concrete Structures Group
- Constructionline
- CPA - Construction Products Association
- CPD - Continual Professional Development
- CRA - Concrete Repair Association
- FPDC - Federation of Plasterers and Drylining Contractors
- FSC - Forest Stewardship Council
- ILM - Institute of Leadership & Management
- ISMM - Institute of Sales and Marketing Management
- KTN - Knowledge Transfer Network
- LPCB - Loss Prevention Certification Board
- NIA - National Insulation Association
- NAS - National Association of Shopfitters
- NFRC - The National Federation of Roofing Contractors Ltd
- NSCC - National Specialist Contractors Council
- REA - Renewable Energy Association
- RIBA - Royal Institute of British Architects
- RIBA CPD Network
- SPRA - Single Ply Roofing Association
- TICA - Thermal Insulation Contractors Association
- TIMSA - Thermal Insulation Manufacturers and Suppliers Association
- UK Green Building Council
- UK Timber Frame Association
- UKAS - Moody International Quality Management
- ISO 14001:2004 (Environment) and OHSAS 18001:2007 (Health and Safety) across all of the Group's UK sites with Moody International and BSI being the appointed Assessors.

SIG accreditations & memberships

Naturally, SIG businesses have achieved/are members of the Associations relevant to their market sector. Businesses are not members of all Associations.



This list of accreditations is not exhaustive and is not meant to imply that all SIG companies hold accreditations to every market sector.

SIG UK Group Businesses

Our Businesses

SIG plc has three business streams, Insulation & Energy Management, Interiors and Exteriors which are organised into two divisions:

1. Insulation & Interiors
2. Exteriors

Many of our businesses are market leaders in their respective specialist sectors.

Insulation & Interiors

Exteriors

➔ An International Supplier

Europe & Middle East

As well as our UK network of businesses SIG's principal European operations cover France, Germany, Austria, Benelux, Poland, Slovakia, the Czech Republic and Hungary. We also have trading operations in Bulgaria, Romania, Turkey and Spain in Europe as well as Dubai and Abu Dhabi in the United Arab Emirates, Muscat in the Sultanate of Oman and Doha in Qatar.

In each operating country we have a strong, if not leading, presence in the Insulation, Interiors and Roofing markets as well as many niche markets where we provide specialist equipment, services and products that support the construction industry.

Our pan-European presence allows us to respond to local, national and global changes in the marketplace and share our specialist knowledge across the Group. While we recognise the strength of our traditional markets we also proactively look to the future and respond to the local and Europe-wide changes in demand.



➤ Services at a Glance

SIG offers more than products alone. As suppliers of specialist construction products, we are keen to support and guide you in achieving the most suitable and cost effective solution.

- **Guidance on Building Regulations compliance**
- **Bespoke, specialist solutions & manufacture**
- **Design services**
- **Pre-fabrication services**
- **SAP, SBEM and U-value calculations**
- **Air tightness testing**
- **Thermal bridging and interstitial condensation analysis**
- **Thermal imaging and analysis**
- **Carbon calculations**
- **Pull-out testing on-site**
- **Takes-offs for insulation and brickwork packages**
- **Project management of the brickwork package**
- **Complete roofing systems backed with Professional Indemnity Insurance and full system guarantees**
- **Hand-Arm Vibration Syndrome (HAVS) management & advice**
- **Installation of cavity wall and loft insulation; new build and retro-fit**
- **Installation of renewable technologies**
- **Installation of building management systems**
- **RIBA approved CPD seminars**
- **On-line trading**
- **Plasterboard recycling service**
- **Roofing contractor training and development schemes**
- **Geotechnical consultancy**
- **Acoustics and vibration consultancy**
- **Interior fit-out technical support**
- **Interiors design & visualisation services**
- **Dedicated estimating services for interiors**
- **Specialist glass processing and installation**
- **Colour sampling service for interiors**

➤ A PARTNERSHIP

Our aims are to make your life easier on site, and add value to your project wherever we can.



FOCUS, SPECIALISATION AND SERVICE

SIG plc, Signet House, 17 Europa View, Sheffield Business Park
Sheffield, S9 1XH

T: 0114 285 6300
info@sigplc.co.uk
sigplc.com

Disclaimers

This catalogue has been produced by SIG PLC. All rights reserved.
No copying by any means is permitted, except when permission is given in writing by SIG PLC. This catalogue contains representations of manufacturers' product information that is reproduced by SIG PLC in good faith, based on the latest knowledge available at the time of going to print. Whilst every effort has been made to ensure that the information is current and correct, as distributors SIG PLC cannot accept responsibility for the application and performance levels of the products featured. Neither can we accept responsibility where the manufacturers' instructions have not been followed.



This publication has been printed utilising a thermal based image setter for production. A waterless and chemical free technology which totally eliminates the need for waste disposal. Printed by an environmental accredited ISO 14001 printing company on low alcohol presses using vegetable based inks. Paper sourced from sustainable forests.