

CLOSING CAVITY WALLS

CLOSERS, STOPS AND BARRIERS

CLOSERS + BARRIERS + STOPS
VERTICAL + HORIZONTAL + ALL LEVELS
DAMP + THERMAL + ACOUSTIC PROTECTION

VOLUMENINETEEN



CavityTrays

Contact Information



telephone
01935 474769



facsimile
01935 428223



email
enquiries@cavitytrays.co.uk



web
www.cavitytrays.com



help desk
0800 7311779



address
Yeovil Somerset BA22 8HU

Introducing... Cavity Wall Closers

bestpractice@cavitytrays.co.uk

This brochure lists efficient ways in which cavity walls may be closed, Building Regulations, thermal, fire and acoustic requirements, plus the arrestment and isolation of permeating damp, are addressed using our construction solutions.

The specifier may select from a wide range of options. Some closers address the same construction detail, but with a different emphasis. The choice may be refined pending the desired thermal, fire integrity or acoustic level sought. Choice also extends with the provision for expansion

and contraction between timber and masonry skins.

Three new products, seventeen product enhancements and numerous specification revisions feature within this new publication. If you cannot see what you are after or have a bespoke requirement, please contact us.






To contact us, use the e-mail address or any of the other options listed. We look forward to being of service to you and supplying cost effective best practice solutions to protect your projects.



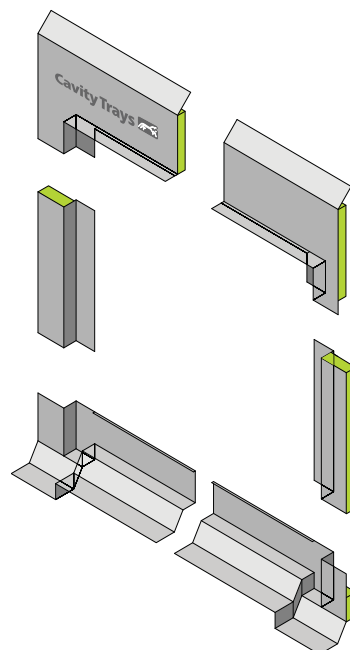
Contents

Bespoke Traditional Closing Service	03
Type D Damp Course	04
Type DIP	05
Type FWC Five Width Cavicloser	06
Type H Cavicloser	07
Type O Cavicloser	08
Quickcloser	09
Sash Frame Insulated DPC	10
Type V Cavicloser	11
Type WCA	12
Cavi120 Type V Closer	13
Cavi90 Type H Closer	14
Cavi60 Type WCA	15
Cavi60 Type V170	16
Cavi240 Type PWIB	17
Application Example	18
Cavi60 Type SAF Stop	19
Cavi120 Combined Fire and Acoustic Stop	20
Cavi240 Type CFIS	21
Cavi60 Type MWR200	22
Type GBFICS	23
Type GBPWIS	24
Optimised Thermal + Acoustic + Fire Integrity	25

Legend

	Bespoke versions available
	Cavity width range accommodated
	Variable bed and height dimensions
	Number of minutes fire integrity
	Acoustic suppression qualities

Contents



Bespoke Traditional Closing Service

Introduction

Where construction or reconstruction of a property is required to replicate a traditional style, the opportunity exists to eliminate shortcomings or areas in which the damp proofing and thermal qualities are not ideal. It is usually possible to introduce measures that do not affect the aesthetics of the structure but do raise the performance and improve the behaviour of the wall.

Openings in new and existing buildings can be assessed and preformed closing DPC's moulded to aid consistent and accurate construction. At the same time thermal benefits can be introduced where possible.

Both architect and contractor are able to make use of preformed solutions that create the desired detail, thus eliminating problems commonly associated with installer error and misplacement.

To take advantage of the Bespoke Traditional Closing Service, please contact your Area Manager or the Helpdesk at our Yeovil office. (See inside front cover for contact numbers).

Specify

Bespoke Traditional Closing DPC's by Cavity Trays of Yeovil Somerset BA22 8HU. Profiles to be determined by Bespoke Traditional Closing Service and schedule issued by Cavity Trays Ltd.

Construction Advantage

Assured consistent detail of build. Fixed cost. Opportunity to enhance specification.

Bespoke Traditional Closing Service	
Exposure rating / frame relationship	Up to very severe pending detail
Cavity - standard sizes accommodated	All sizes + solid walls pending detail
Special cavity widths accommodated	Yes pending detail
Straight reveals	Yes pending detail
Checked + typical sash frame reveals	Yes pending detail
Product lengths	2.4m
Acts as vertical dpc	Yes
Acts as insulator	Provided where design permits
Permits different frame positions	N/A
Frames fitted as work proceeds or later	Yes – usually both options pending design
Timber frame / traditional construction	Usually unaffected by inner skin type
Masonry skin styles	Subject to sight of detail
Undulating masonry face finishes	Seek advice providing details of material
Acoustic insulator	No – but available as option in some instances
Fire rated	No
Vertical and horizontal applications	Yes pending detail
Compatible with other cavity wall elements	To be determined upon assessment
Securing ties supplied	N/A
Pack sizes	Individual lengths
Weight per pack	Varies pending style of profile selected.
Material	Pethylene + Inskorfoam or rock wool insulator
Colour	Black
Manufacturing standard	BS EN ISO 9001:2000
Building Regulations	Yes regulations can be satisfied
NHBC / Zurich / Premier requirements	Yes requirements can be satisfied
'k' value of insulation	Normally 0.029W/mK to 0.033W/mK
Possible composite thermal resistance path	Depends on design
CFC free	Yes + zero ODP using standard materials
CAD drawing downloads available	Bespoke available subject to order

References

- Building Regulations Document C L1 & L2
- British Standard 5628-3
- BRE Thermal Insulation Avoiding Risks
- Cavity Trays Ltd main manual
- Website: cavitytraystandards.co.uk
- Robust Details
- Scottish Tech Standards Part D
- Building Regulations Scotland – proposals for consultation June 2008
- BS EN ISO 10211: Thermal bridges in building construction

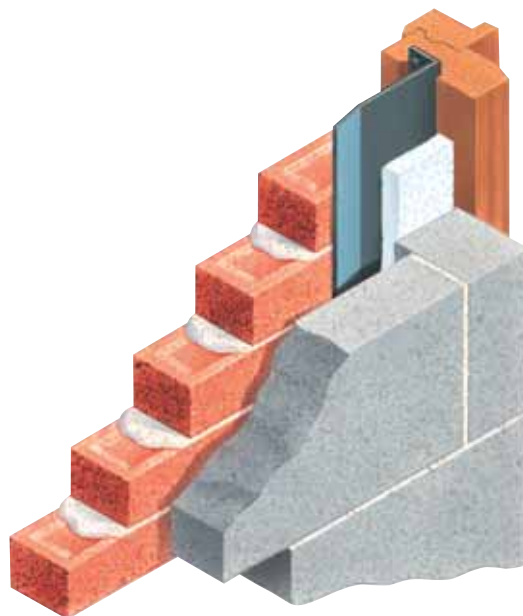


Type D

Damp Proof Course

04

- Vertical damp-proof course
- Vertical insulator
- Robust and self-supporting - cannot sag
- Eliminates danger of mortar bridging
- Conventional build or attach to frame



Introduction

If the masonry forming the cavity wall reveal is to be returned in the traditional manner, the preformed Type D can be deployed to provide the requisite dpc protection and thermal break now sought to satisfy regulation requirements. Being ready-shaped and available in almost any profile, the Type D introduces consistency of the intended construction detail. Thus distortion or misplacement associated with conventional dpc is eliminated.

References

- Investigating Rainwater Penetration of Modern Buildings (Masonry 129)
- Building Regulations Part L
- British Standard 5628-3
- BRE Thermal Insulation Avoiding Risks
- Website: cavitytraystandards.co.uk
- Robust Details
- Scottish Tech Standards Part D

Type D Cavity Closer	Vertical DPC & Insulator	Accommodates traditional reveal closing
Exposure rating		Severe / Very severe pending profile
Cavity - standard sizes accommodated		Profiles available to suit all cavity dimensions
Special cavity widths accommodated		Yes - all dimensions variable
Straight reveals		Yes - build in profile as supplied
Checked reveals		Yes - see illustrated version / style
Product lengths		2.44m.
Acts as vertical dpc		Yes
Acts as insulator		Yes
Permits different frame positions		Yes
Frames fitted as work proceeds or later		Build in when wall is raised
Timber frame / traditional construction		Both styles accommodated
Masonry skin styles		All popular flat faced masonry
Undulating masonry face finishes		Seek advice providing details of material
Acoustic insulator		NA
Fire rated		No (see Cavi prefixed range for fire rated)
Vertical and horizontal applications		Vertical. Horizontal versions to order
Compatible with other cavity wall elements		No known restrictions
Securing ties supplied		NA
Pack sizes		x 10 lengths
Weight per pack		Dependent on profile. Average pack 8kg
Material		Polypropylene dpc + polystyrene inskorfoam
Colour		Black with white insulator
Manufacturing standard		BS EN ISO 9001:2000
Building Regulations		Yes regulations can be satisfied
NHBC / Zurich / Premier requirements		Yes requirements can be satisfied
'k' value of insulations		0.033W/mK / 0.038W/mK
Possible composite thermal resistance path		0.89 m ² K/W (25mm) 1.55 m ² K/W (50mm)
CFC free		Yes+ zero ODP
CAD drawing downloads available		Yes

Specify

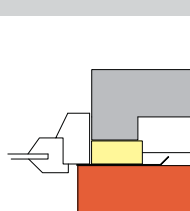
Type D by Cavity Trays of Yeovil Somerset BA22 8HU to close cavity wall reveal. State profile / dimensions to permit compatible matched dimension Type D to be supplied.

Construction Advantage

Rigid profile Type D damp course does not sag or distort like roll dpc. This benefits positive positioning and a consistent build detail.

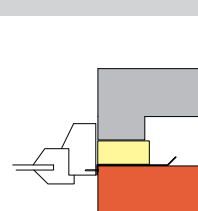


Checked Reveal



If required the insulation can be set back so the dpc interfaces with the frame (as shown)

Standard Reveal

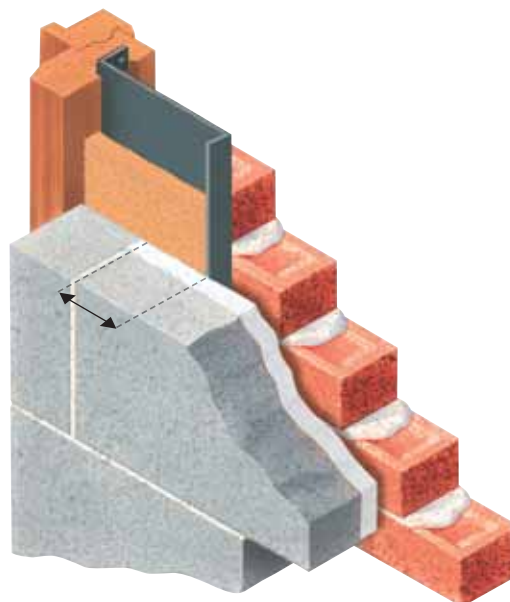


Can be supplied in two insulation thicknesses - 25mm or 50mm, to maximise thermal target

COMPUTER REFERENCE CODES:
D (WITH 25MM INSULATION)
D2 (WITH 50MM INSULATION)

Type DIP

Type D Interfacing Profile



- Vertical dpc
- Thermal break
- Interfaces with cavity insulation
- Eliminates thermal spiking
- Rigid profile ensures consistency of build

Introduction

The Type DIP (Type D in Interfacing Profile) is used where the mason is returning block work at the reveal in the traditional manner, and slab insulation is present within the cavity. The Type DIP is manufactured of solid dpc to which is bonded insulation. The dpc profile extends sufficiently into the cavity to permit this insulation to overlay the cavity slab insulation and maximise the thermal arrangement whenever inner and outer skins meet. Different profiles are available for both straight and checked applications to suit structural requirements.

References

- Investigating Rainwater Penetration of Modern Buildings (Masonry 129)
- Building Regulations Part L
- British Standard 5628-3
- BRE Thermal Insulation Avoiding Risks
- Website: cavitytraystandards.co.uk
- Robust Details
- Scottish Tech Standards Part D
- BS EN ISO 6946:1997

Type DIP DPC & Interfacing Insulator	Accommodates traditional reveal closing
Exposure rating	Severe / Very severe pending profile
Cavity - standard sizes accommodated	Profiles available to suit all cavity dimensions
Special cavity widths accommodated	Yes - all dimensions variable
Straight reveals	Yes - build in profile as supplied
Checked reveals	Yes - see illustrated version / style
Product lengths	2.44m.
Acts as vertical dpc	Yes
Acts as insulator	Yes
Permits different frame positions	Yes
Frames fitted as work proceeds or later	Build in when wall is raised
Timber frame / traditional construction	Both styles accommodated
Masonry skin styles	All popular flat faced masonry
Undulating masonry face finishes	Seek advice providing details of material
Acoustic insulator	Acoustic insulation option available
Fire rated	No (see Cavi prefixed range for fire rated)
Vertical and horizontal applications	Vertical. Horizontal versions to order
Compatible with other cavity wall elements	No known restrictions
Securing ties supplied	NA
Pack sizes	X 10 lengths
Weight per pack	Dependent on profile. Average pack 8kg
Material	Polypropylene dpc + polystyrene BS 3836-1986
Colour	Black with tinted white insulator
Manufacturing standard	BS EN ISO 9001:2000
Building Regulations	Yes regulations can be satisfied
NHBC / Zurich / Premier requirements	Yes requirements can be satisfied
'k' value of insulations	0.033W/mK / 0.038W/mK
Possible composite thermal resistance path	0.89 m ² K/W (25mm) 1.55 m ² K/W (50mm)
CFC free	Yes+ zero ODP
CAD drawing downloads available	Yes

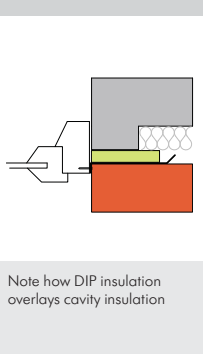
Specify

Type DIP by Cavity Trays of Yeovil Somerset BA22 8HU to close cavity wall reveal. State profile / dimensions to permit compatible matched dimension Type DIP to be supplied.

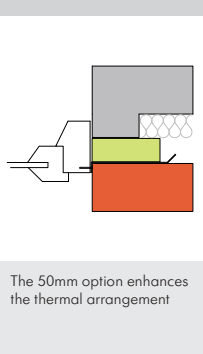
Construction Advantage

Type DIP permits traditional closing and importantly interfaces with the cavity sheet insulation. This avoids vertical breaks (spiking) that can manifest if the cavity sheet insulation is not accurately and consistently cut up to the reveal. The Type DIP promotes cost effective traditional closing with enhanced thermal status.

25mm Insulation



50mm Insulation

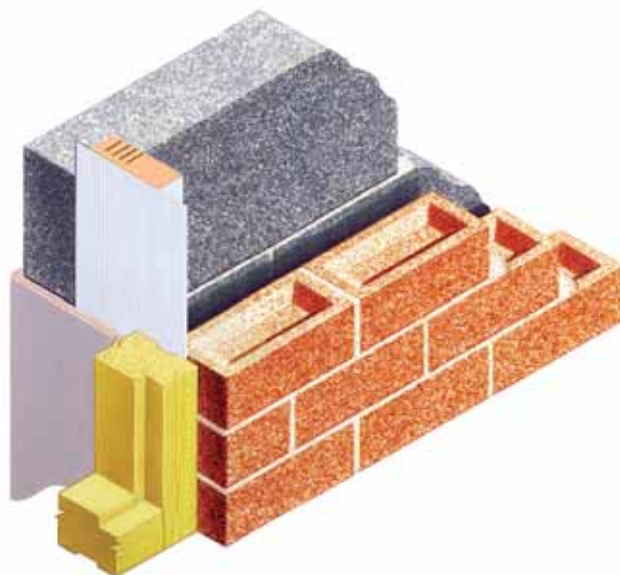


COMPUTER REFERENCE CODES:
DIP (WITH 25MM INSULATION)
DIP2 (WITH 50MM INSULATION)



Type FWC

Five Width Cavicloser



06

- Acts as a dpc
- Insulates the reveal
- One model provides five size options
- Straight reveal applications

Introduction

The Type FWC offers the installer flexibility, as grooves in the insulating core denote where the core can be trimmed back to create a cavity closer to suit five different cavity widths. Thus this one model addresses the widths of cavity currently popular.

References

- Building Regulations Part L
- British Standard 5628-3
- BRE Thermal Insulation Avoiding Risks
- Website: cavitytraystandards.co.uk
- Robust Details
- Scottish Tech Standards Part D

Type FWC Five Width Cavicloser	General purpose cavity closer
Exposure rating	Severe 30+mm setback. Very severe when checked
Cavity - standard sizes accommodated	Suits 50mm, 65mm, 75mm, 75mm, 85mm & 100mm
Special cavity widths accommodated	Above five dimensions - trim to choice
Straight reveals	Yes - build in profile as supplied
Checked reveals	No
Product lengths	2.4m
Acts as vertical dpc	Yes
Acts as insulator	Yes
Permits different frame positions	Yes
Frames fitted as work proceeds or later	Second fix
Timber frame / traditional construction	Both styles accommodated
Masonry skin styles	All popular flat faced masonry
Acoustic qualities	NA
Fire rated	No (see Cavi prefixed range for fire rated)
Vertical and horizontal applications	Yes - see examples
Compatible with other cavity wall elements	No known restrictions
Securing ties supplied	No - friction fitting + nail fix to block work
Pack sizes	x 10 lengths
Weight per pack	9 kg
Material	PVCU + orange polystyrene foam
Colour	White with orange insulation
Manufacturing standard	BS EN ISO 9001:2000
Building Regulations	Yes regulations can be satisfied
NHBC / Zurich / Premier requirements	Yes requirements can be satisfied
'k' value of insulation	0.029W/mK
Possible composite thermal resistance path	0.98 m ² K/W common applications 30mm sb
CFC free	Yes - zero ODP
CAD drawing downloads available	Yes

Specify

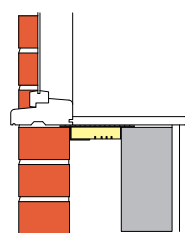
Type FWC Five Width Cavicloser by Cavity Trays of Yeovil Somerset BA22 8HU to close cavity wall reveal. Trim along grooves to suit intended cavity size.

Construction Advantage

Installer needs only one model to close most popular cavity widths.

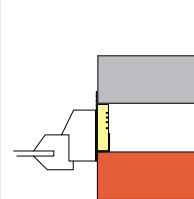


Cill Detail



Typical application of the Type FWC used at cill level

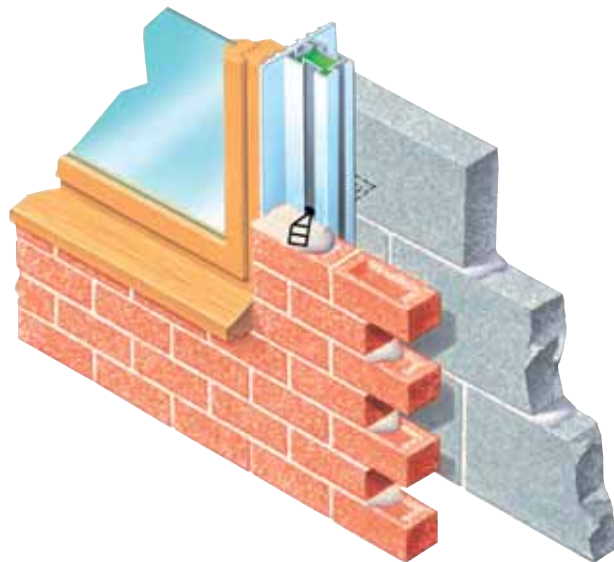
Standard Reveal



The Type FWC is introduced into the cavity after the reveal masonry is raised

COMPUTER REFERENCE CODES:
FWC2.4

Type H Cavicloser



- Closes cavity and accommodates a range of cavity widths
- Acts as a DPC
- Insulates and introduces a thermal zone
- Permits choice of frame position
- Frame fixing when work proceeds or at later date
- Integral fins

Introduction

The Type H is a two part closer. A separate faceplate is attachable to whichever side of the closer body is selected to suit the cavity width and window position. Accompanying wall ties anchor into the moulded dovetails to permit easy bonding as the masonry is raised. Anti capillary features provide a check against wind-driven rain.

References

- Building Regulations Document C L1 & L2
- British Standard 5628-3
- BRE Thermal Insulation Avoiding Risks
- Cavity Trays Ltd main manual
- Website: cavitytraystandards.co.uk
- Robust Details
- Scottish Tech Standards Part D

Type H Cavicloser H1 and H2 versions	Reveal closer with attachable faceplate
Exposure rating / frame relationship	Severe 30mm+ setback. Very severe when checked
Cavity - standard sizes accommodated	H1 suits 50mm, & 75mm, H2 suits 70mm & 100mm
Special cavity widths accommodated	No - see alternative models
Straight reveals	Yes - build in profile as supplied
Checked reveals	Yes - build in as illustrated
Product lengths	2.1m, 3.0m, 3.6m lengths to special order.
Acts as vertical dpc	Yes
Acts as insulator	Yes
Permits different frame positions	Yes
Frames fitted as work proceeds or later	Yes - first or second fix options
Timber frame / traditional construction	Both styles accommodated
Masonry skin styles	All popular flat faced masonry
Undulating masonry face finishes	Seek advice providing details of material
Acoustic insulator	NA
Fire rated	No (see Cavi prefixed range for fire rated)
Vertical and horizontal applications	Yes - see examples
Compatible with other cavity wall elements	No known restrictions
Securing ties supplied	Yes
Pack sizes	H1 x 10 lengths per pack. H2 x 6 lengths per pack
Weight per pack including faceplates	H1 x 2.1 = 24kg 3m = 34kg. 3.6m = 41kg. H2 x 2.1 = 24kg 3m = 35kg. 3.6m = 42kg.
Material	PVCU + polystyrene inskorfoam
Colour	White
Manufacturing standard	BS EN ISO 9001:2000
Building Regulations	Yes requirements can be satisfied
NHBC / Zurich / Premier requirements	Yes permits requirements to be satisfied
'k' value of insulation sample	0.030W/mK
Possible composite thermal resistance path	1.90 m ² K/W (75mm cavity)
CFC free	Yes+ zero ODP
CAD drawing downloads available	Yes

Checked Reveal	Cill Detail	Standard Reveal	Head Detail
Extent of check is unrestricted. Ties offset to accommodate splay / cant masonry finishes	Typical cill application. Splayed cill masonry option usually unrestricted as ties offset	Economical reveal construction achieved by spanning the frame across the cavity	Typical lintel style permitting closing at the head

Specify

Type H1 or H2 (stipulate) by Cavity Trays of Yeovil Somerset BA22 8HU to close cavity wall reveal. Cavity size: (state width).

Construction Advantage

Faceplate location in relation to reveal can be varied, benefiting situations where frame is deeply set.

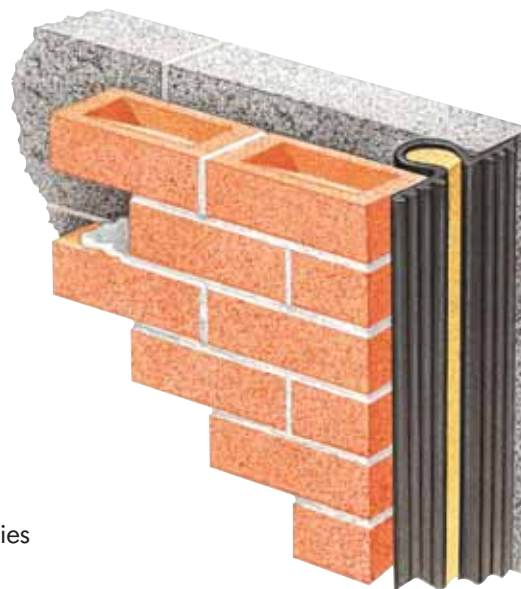


COMPUTER REFERENCE CODES:
H X 2.1M **H 2 X 2.1M** (H2 LARGER PROFILE)
H X 3.0M **H 2 X 3.0M** (H2 LARGER PROFILE)
H X 3.6M **H 2 X 3.6M** (H2 LARGER PROFILE)

Type O

Refurbishment cavity closer DPC for existing unclosed cavity walls

- Combined DPC and insulator
- Accommodates numerous cavity sizes and variances
- Suitable for checked or straight reveals
- Instantly upgrades structures when replacing frames
- Standard with many window and door replacement companies
- Anti capillary mouldings



Introduction

The Type O fills the gap exposed when a window or door frame is removed from a cavity wall that has not been 'closed'. The compressible O section holds the moulding in shape and the two projecting wings project against the face of both skins. The integral insulation promotes thermal enhancement of the existing opening and vertical dpc integrity is established. Wings can be trimmed back to suit after introduction of new frame. The Type O may be flexed to suit checked reveals.

References

- Accessing the affects of thermal bridging at junctions and around openings
- (T I Ward) BRE Press 2006
- Building Regulations Part L
- British Standard 5628-3
- BRE Thermal Insulation Avoiding Risks
- Website: cavitytraystandards.co.uk

Type O Vertical Remedial Insulated DPC	Upgrading closer when replacing windows
Exposure rating	Severe 30+mm setback. Very severe when checked
Cavity - standard sizes accommodated	O1 fits 20mm- 60mm. O2 fits 60mm -100mm cavities
Special cavity widths accommodated	Compressible within above ranges
Straight reveals	Yes - wings equalise to suit aligned reveal masonry
Checked reveals	Yes - wings offset to suit checked reveal masonry
Product lengths	Std 885mm lengths lap and lock
Acts as vertical dpc	Yes
Acts as insulator	Yes
Permits different frame positions	Yes
Frames fitted as work proceeds or later	Install when replacing windows & cavity exposed
Timber frame / traditional construction	Both styles accommodated
Masonry skin styles	All popular flat faced masonry
Undulating masonry face finishes	Seek advice providing details of material
Acoustic insulator	Some reduction of cavity acoustic transmission
Fire rated	No (see Cavi prefixed range offering fire rated)
Vertical and horizontal applications	Yes -see examples
Compatible with other cavity wall elements	No identified restrictions
Securing ties supplied	NA - secure wings and trim after installation
Pack sizes	x 10 lengths (also available individually)
Weight per pack	4kg
Material	Polypropylene dpc, siliconised wool insulation
Colour	Black
Manufacturing standard	BS EN ISO 9001:2000
Building Regulations	Yes regulations can be satisfied
NHBC / Zurich / Premier requirements	Yes requirements can be satisfied
'k' value of insulation	0.035W/mK (varies when compressed)
Possible composite thermal resistance path	1.25m ² K/W (in 50mm cavity)
CFC free	Yes
CAD drawing downloads available	Yes

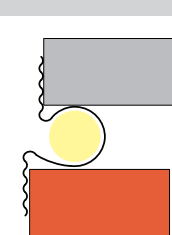
Specify

Type O1 or O2 Vertical Damp Proof Course (stipulate) by Cavity Trays of Yeovil Somerset BA22 8HU. Introduce into existing exposed cavities Cavity size: (state width).

Construction Advantage

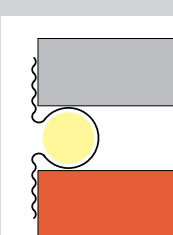
The requirement to thermally improve existing housing stock was to have featured within the new Building Regulations. The requirement was omitted, so technically there is no current obligation to thermally improve or acoustically improve openings when existing frames are removed and replacements fitted. Thus this product is an optional consideration available to specifiers with the opportunity to raise standards of existing housing stock.

Checked Reveal



Type O profile can be flexed to accommodate offset / checked masonry

Standard Reveal



When the new frame is introduced it spans the cavity and covers the Type O

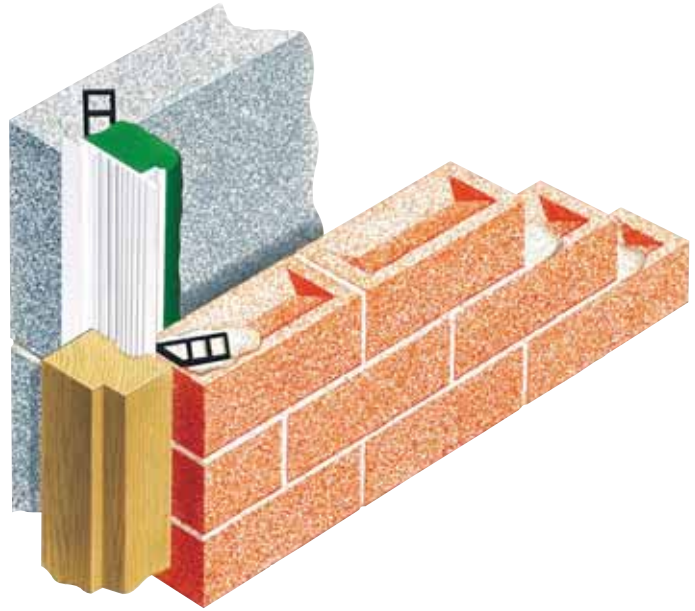


COMPUTER REFERENCE CODES:
O 900 INS (STD SIZE)
O2 900 INS (LARGE SIZE)

Quickcloser

Vertical closer with flexible insulating core

- Closes the reveal
- Insulates cavities from 40mm to 100mm wide
- Acts as a DPC
- New and existing structure applications
- Integral Fins



Introduction

The Quickcloser has a flexible insulating core within a polythene sleeve. This can be shaped to size to suit the cavity width sought by the installer as the wall is raised. Accompanying wall ties secure the Type O to the masonry skins. This product can also be successfully introduced into existing cavities in new and existing applications.

References

- Building Regulations Part L
- British Standard 5628-3
- BRE Thermal Insulation Avoiding Risks
- Website: cavitytraystandards.co.uk
- Robust Details
- Scottish Tech Standards Part D

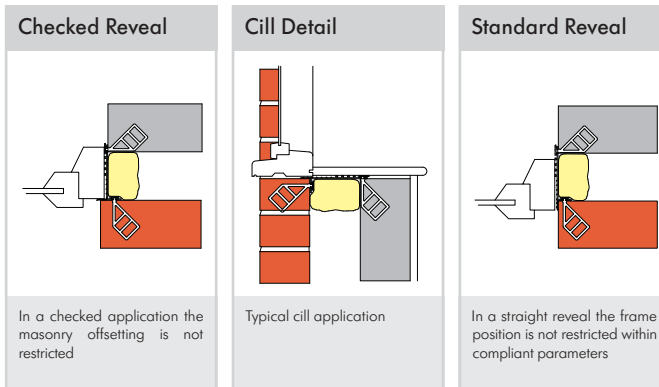
Quickcloser	Adjustable insulator closer
Exposure rating	Severe.
Cavity - standard sizes accommodated	Insulation shapes from 40mm up to 100mm max
Special/unusual cavity widths accommodated	Yes - within above range
Straight reveals	Yes - build in profile as supplied
Checked reveals	Yes - Turn section 90° & build in as illustrated
Product lengths	2.1m and 2.4m
Acts as vertical dpc	Yes
Acts as insulator	Yes
Permits different frame positions	Yes
Frames fitted as work proceeds or later	Yes - first or second fix options possible
Timber frame / traditional construction	Can suit both styles
Masonry skin styles	All popular flat faced masonry
Acoustic insulator	Yes - reduction by sleeved insulation
Fire rated	No (see Cavi prefixed range for fire rated)
Vertical and horizontal applications	Yes - see examples
Compatible with other cavity wall elements	Retro cavity fill could alter insulation sleeve shape
Securing ties supplied	Yes
Pack sizes	x 10 lengths
Weight per pack	2.1m x 10 = 13.5kg. 2.4 x 10 = 15 kg
Material	PVCU + siliconised rock wool insulator
Colour	White + green encapsulation sleeve
Manufacturing standard	BS EN ISO 9001:2000
Building Regulations	Yes regulations can be satisfied
NHBC / Zurich /Premier requirements	Yes requirements can be satisfied
'k' value of insulation	0.035W/mK (varies when compressed)
Possible composite thermal resistance path	1.50 m ² K/W
CFC free	Yes
CAD drawing downloads available	Yes

Specify

Quickcloser by Cavity Trays of Yeovil Somerset BA22 8HU to close cavity wall reveals where cavities are between 40mm to 100mm range.

Construction Advantage

The installer creates the shape of the closing insulation, which can be helpful if the cavity masonry faces are undulating.



COMPUTER REFERENCE CODES:
QUICK 2.1
QUICK 2.4

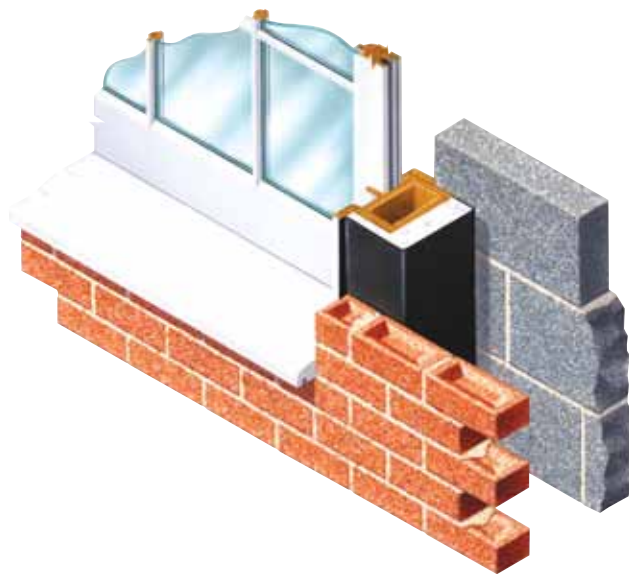


Sash Frame

Insulated DPC

10

- Acts as a DPC
- Thermally insulates
- Assured preformed detail
- Permits upgrading of opening



Introduction

Specifically manufactured for use with sash window frames. DPC integrity is introduced along the line of the masonry check and cavity, promoting thermal enhancement of the reveal. Sash Frame DPC's are available for both traditional counterweight box style and balance style frames. The specifier is able to select the extent of thermal enhancement to suit the frame and structural opening dimensions. In the case of balanced sash frames replacing counterweight sash frame, the opportunity also exists to fully insulate the resultant void. Modified versions are also available for use in solid wall construction where envelopment of the frame is desired.

References

- Building Regulations Document C L1 & L2.
- British Standard 5628-3
- BRE Thermal Insulation Avoiding Risks
- Cavity Trays Ltd main manual
- Website: cavitytraystandards.co.uk
- Robust Details
- Scottish Tech Standards Part D

Specify

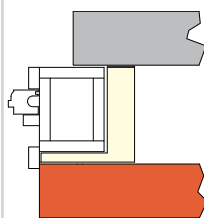
Sash Frame Insulated DPC by Cavity Trays of Yeovil Somerset BA22 8HU to interface with Sash frame and close cavity wall reveal. Sash Frame Insulated DPC profile as agreed drawing to suit ____mm cavity. (enter appropriate cavity width dimensions).

Construction Advantage

In new work applications an enhanced level of dpc and insulation can be introduced. In existing work advantage can be taken when introducing new frames to provide a level of upgrading that was not previously available.

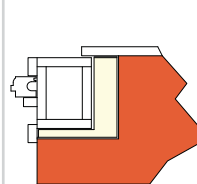
Sash Frame Insulated DPC	New and existing applications
Exposure rating / frame relationship	Very severe
Cavity - standard sizes accommodated	All popular sizes
Special cavity widths accommodated	Yes bespoke closer service offered
Straight reveals	N/A
Checked + typical sash frame reveals	Yes - build in profile as supplied
Product lengths	2.4m
Acts as vertical dpc	Yes
Acts as insulator	Yes
Permits different frame positions	N/A
Frames fitted as work proceeds or later	Yes - first and second fix options pending design
Timber frame / traditional construction	Not affected by inner skin type
Masonry skin styles	All popular flat faced masonry
Undulating masonry face finishes	Seek advice providing details of material
Acoustic insulator	No - but available as option
Fire rated	No (see Cavi prefixed range for fire rated)
Vertical and horizontal applications	Yes - see examples
Compatible with other cavity wall elements	No identified restrictions
Securing ties supplied	Not required - secure to frame
Pack sizes	Individual lengths
Weight per pack	Varies pending style of profile selected.
Material	Pethylene + Insorkofoam or rock wool insulator
Colour	Black
Manufacturing standard	BS EN ISO 9001:2000
Building Regulations	Yes regulations can be satisfied
NHBC / Zurich / Premier requirements	Yes requirements can be satisfied
'k' value of insulation	0.033W/mK / 0.038W/mK
Possible composite thermal resistance path	Varies pending frame/design option
CFC free	Yes + zero ODP
CAD drawing downloads available	Bespoke downloads offered

Cavity Reveal



The insulated dpc's prevent cold bridging to the two sides of the frame that can otherwise act as thermal conduits

Solid Wall

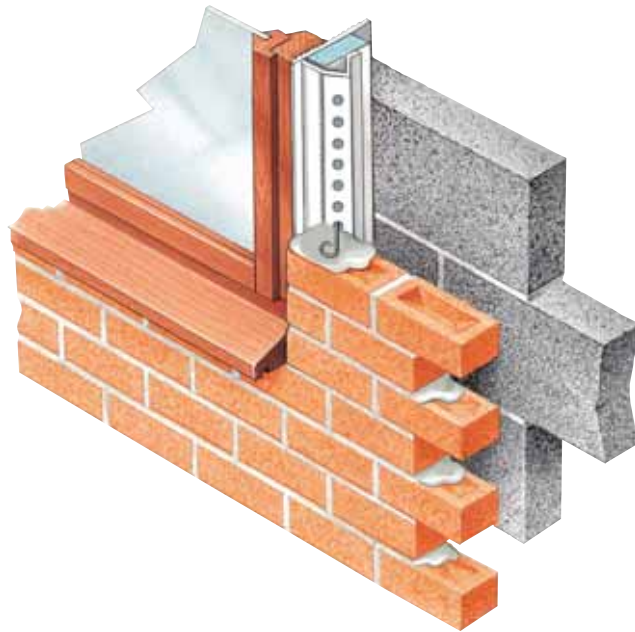


Often the opportunity exists to thermally enhance solid wall applications

COMPUTER REFERENCE CODES:
SFC BESPOKE



Type V Contract Closer



- Closes cavity and acts as a DPC
- Insulates the reveal
- Range of cavity widths offered
- Eliminates need to cut and return masonry
- Cost-effective standardised detail
- Anti capillary fins

Introduction

The Type V Closer provides an economical way of closing the cavity wall reveal. It is a one-part model consisting of a ribbed face that spans the cavity and overlays the inner and outer skins of masonry. Secured behind this face is a closed cell insulating core, that projects into the cavity. Slots accommodate ties to secure the closer. Integral anti-capillary mouldings. Frames can be fitted in any compliant position within the reveal depth.

References

- Building Regulations Document C L1 & L2.
- British Standard 5628-3.
- BRE Thermal Insulation Avoiding Risks.
- Cavity Trays Ltd main manual.
- Website: cavitytraystandards.co.uk
- Robust Details
- Scottish Tech Standards Part D
- Building Regulations Scotland – proposals for consultation June 2008.
- BS EN ISO 10211: Thermal bridges in building construction

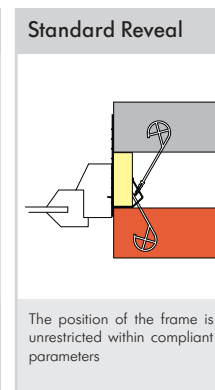
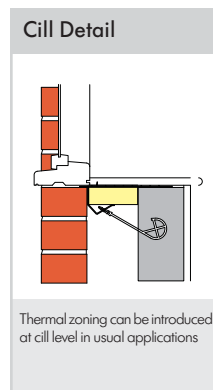
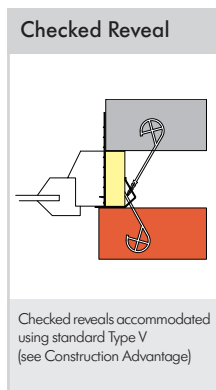
Type V Cavity Closer	Contract closer - popular on housing schemes
Exposure rating / frame relationship	Severe 30+mm setback. Very severe when checked
Cavity - standard sizes accommodated	50mm, 65mm, 75mm, 100mm
Special cavity widths accommodated	Yes bespoke closer service offered
Straight reveals	Yes - build in profile as supplied
Checked reveals	Yes - turn hinged section 90° prior to use
Product lengths	2.1m, 3.0m
Acts as vertical dpc	Yes
Acts as insulator	Yes
Permits different frame positions	Yes
Frames fitted as work proceeds or later	Yes - first or second fix options
Timber frame / traditional construction	Both styles accommodated
Masonry skin styles	All popular flat faced masonry
Undulating masonry face finishes	Seek advice providing details of material
Acoustic insulator	NA
Fire rated	No (see Cavi prefixed range for fire rated)
Vertical and horizontal applications	Yes - see examples
Compatible with other cavity wall elements	No identified restrictions
Securing ties supplied	Yes included within pack
Pack sizes	x 10 lengths
Weight per pack	10kg per 2.1m pack, 14.5kg per 3.0m pack
Material	PVCU + polystyrene inskorfoam
Colour	White
Manufacturing standard	BS EN ISO 9001:2000
Building Regulations	Yes regulations can be satisfied
NHBC / Zurich / Premier requirements	Yes requirements can be satisfied
'k' value of insulations used	0.033W/mK / 0.038W/mK
Possible composite thermal resistance path	2.20 m ² K/W (in 75mm cavity)
CFC free	Yes + zero ODP
CAD drawing downloads available	Yes

Specify

Type V by Cavity Trays of Yeovil Somerset BA22 8HU to close cavity wall reveal. Type V ____ to suit ____mm cavity. (enter appropriate cavity width dimensions).

Construction Advantage

Checked reveals instantly accommodated by turning the hinged section of the closer. The resulting profile also introduces an isolation stop between the damp masonry and the section of the frame in check.

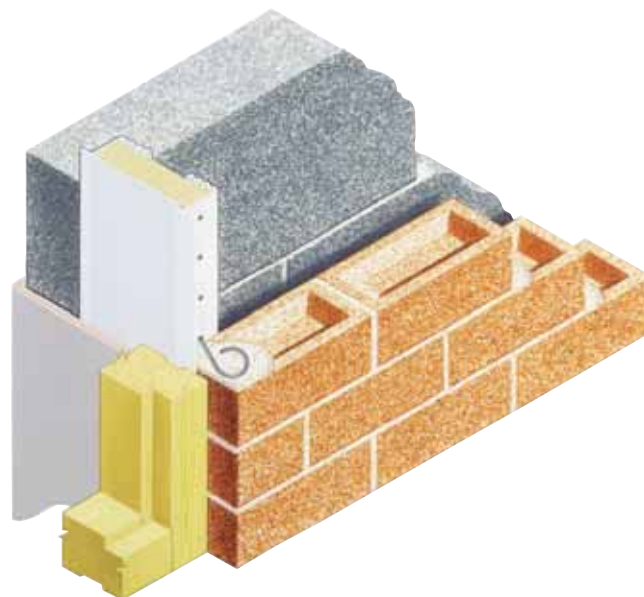


COMPUTER REFERENCE CODES:
V 50 X 3.0M **V 75 X 3.0M**
V 65 X 3.0M **V 100 X 3.0M**

Type WCA

Closer for wide cavity installations

- Closes cavities up to 200mm wide
- Function as vertical DPC
- Insulates reveal
- Permits choice of frame positions
- Micro fins



Introduction

WCA stands for wide cavity applications. The large insulating core promotes excellent thermal qualities. The WCA is available to suit cavities up to 200mm wide and is secured in position using accompanying ties. The side of the closer nearest the inner leaf has a friction fit relationship with the rest of the closer body. Thus in timber frame construction the closer can be screwed or nailed to the inner leaf, and the arrangement can benefit expansion and contraction provision.

References

- Investigating Rainwater Penetration of Modern Buildings (Masonry 129)
- Building Regulations Part L
- British Standard 5628-3
- BRE Thermal Insulation Avoiding Risks
- Website: cavitytraystandards.co.uk
- Robust Details
- Scottish Tech Standards Part D

Type WCA Cavi-closer	Wide cavity applications, acoustic closer
Exposure rating	Severe 30+mm setback. Very severe when checked
Cavity - standard sizes accommodated	From 100mm up to 200mm
Special cavity widths accommodated	Yes - bespoke closer service offered
Straight reveals	Yes - build in profile as supplied
Checked reveals	Yes - build in as checked illustration
Product lengths	2.1m, 3.0m
Acts as vertical dpc	Yes
Acts as insulator	Yes
Permits different frame positions	Yes
Frames fitted as work proceeds or later	Yes - first or second fix options
Timber frame* / traditional construction	Both styles *integral movement link
Masonry skin styles	All popular flat faced masonry
Undulating masonry face finishes	Seek advice providing details of material
Acoustic insulator	Yes reduces sound flanking transmission
Fire rated	No (see Cavi prefixed WCA for fire rated)
Vertical and horizontal applications	Yes - see examples
Compatible with other cavity wall elements	No identified restrictions
Securing ties supplied	Yes
Pack sizes	x 6 lengths
Weight per pack	2.1m x 6 = 14.5kg. 3.0m x 6 = 21kg.
Material	PVCU + polystyrene inskorfoam
Colour	White
Manufacturing standard	BS EN ISO 9001:2000
Building Regulations	Yes regulations can be satisfied
NHBC / Zurich / Premier requirements	Yes requirements can be satisfied
'k' value of insulations used	0.033W/mK / 0.038W/mK
Possible composite thermal resistance path	2.20 m ² K/W (in 200mm cavity)
CFC free	Yes + zero ODP
CAD drawing downloads available	Yes

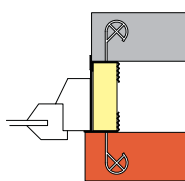
Specify

Type WCA Cavi-closer by Cavity Trays of Yeovil Somerset BA22 8HU to close cavity wall reveal.
State actual cavity width.

Construction Advantage

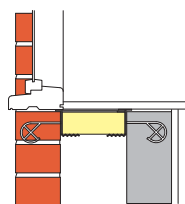
In timber frame applications direct screw fixing to the inner leaf is possible as closer has an integral friction link moulding offering some vertical differential movement provision. See also checked reveal hinge advantage.

Checked Reveal



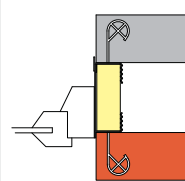
Turn hinged section 90° and the turned portion acts as an isolating barrier between the damp masonry and the checked portion of the frame

Cill Detail



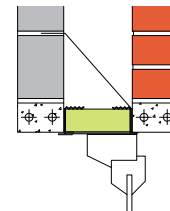
When used at all level the closer does not restrict frame positions or window board combinations

Standard Reveal



Typical wide cavity straight application. See Construction Advantage

Head Detail



Where lintel styles permit the Type WCA can be incorporated across the reveal opening

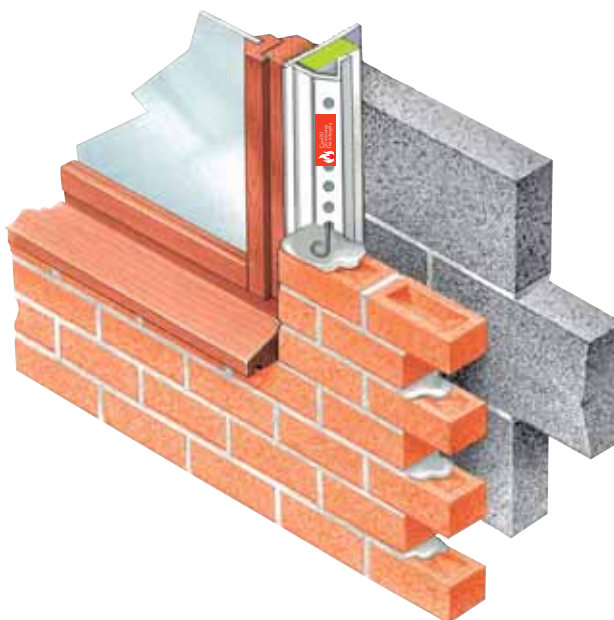


COMPUTER REFERENCE CODES:
TYPE WCA 2.1M (STATE ALSO CAVITY WIDTH)
TYPE WCA 3.0M (STATE ALSO CAVITY WIDTH)

Cavi120

Type V Cavicloser

- 120 minutes fire integrity rating
- Suitable in cavities from 50mm to 100mm wide
- Acts as a DPC
- Closes and insulates reveals
- Anti capillary fins



Introduction

The Cavi 120 Type V has a two-hour fire rating, a sound reducing insulator and is available for cavity sizes up to 100mm. This closer may be used in straight reveals but is also suitable for use with checked reveals. Always state clearly which option is required. The checked reveal version does not have a front projecting lip, and terminates against the inside (cavity) face of the outer skin.

References

- BS 476 (fire resistance testing)
- Part E details – resistance to the passage of sound
- Building Regulations Document C L1 & L2
- Scottish Tech Standards Part D
- Robust Details
- British Standard 5628-3
- BRE Thermal Insulation Avoiding Risks

Cavi 120 Type V Cavicloser	Fire rated acoustic closer
Exposure rating	Severe 30+mm setback. Very severe when checked
Cavity - standard sizes accommodated	50mm, 65mm, 75mm, 85mm, 100mm
Special cavity widths accommodated	Yes bespoke closer service offered
Straight reveals	Yes - build in profile as supplied
Checked reveals	Yes - request special version
Product lengths	2.1m, 3.0m
Acts as vertical dpc	Yes
Acts as insulator	Yes
Permits different frame positions	Yes
Frames fitted as work proceeds or later	Yes - first or second fix options
Timber frame / traditional construction	Both styles accommodated
Masonry skin styles	All popular flat faced masonry
Undulating masonry face finishes	Seek advice providing details of material
Acoustic insulator	Yes – acoustic transmission reduction
Fire rated	Yes Prefix denotes 120mins (2hrs) integrity rating
Vertical and horizontal applications	Yes –see examples
Compatible with other cavity wall elements	No known restrictions
Securing ties supplied	Yes
Pack sizes	Packs of 5 or 10 closers, pending length.
Weight per pack	2.1m x 10 = 19.5kg. 3m x 5 = 14kg.
Material	PVCU + rock fibre insulator + stainless ties
Colour	White extrusion
Manufacturing standard	BS EN ISO 9001:2000
Building Regulations	Yes regulations can be satisfied
NHBC / Zurich / Premier requirements	Yes requirements can be satisfied
'k' value of insulation used	0.035W/mK
Possible composite thermal resistance path	2.37 m ² K/W (in 75mm cavity)
CFC free	Yes + zero ODP
CAD drawing downloads available	Yes

Specify

Cavi 120 Type V fire rated + acoustic cavicloser by Cavity Trays of Yeovil Somerset BA22 8HU to close cavity wall reveal. Cavi 120 Type V to suit _____mm cavity. (enter appropriate cavity width dimensions). State straight or checked reveal.

Construction Advantage

Straight and cranked reveals accommodated. The extent the masonry is offset is not limited. Inclusive of stainless steel ties to secure to both skins. Bespoke options available.

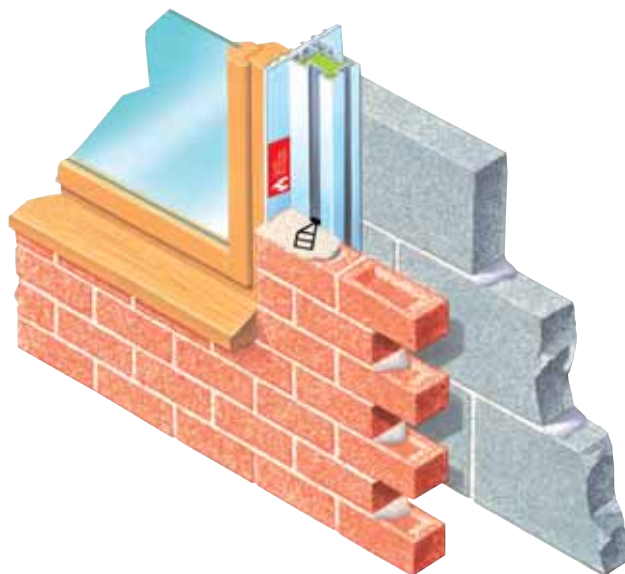
Checked Reveal	Cill Detail	Standard Reveal	Head Detail Reveal
Turn hinged section 90° and the turned portion acts as an isolating barrier between the damp masonry and checked portion of frame	Typical horizontal application at cill level	The Cavi 120 prefix denotes two hours fire rating when used in compliant applications such as a straight reveal	With some lintel arrangements it is possible to incorporate the Cavi 120 Type V at head level



COMPUTER REFERENCE CODES:
 CAVI 120 V 2.1 50 CAVI 120V 3.0 50
 CAVI 120 V 2.1 75 CAVI 120 V 3.0 75
 CAVI 120 V 2.1 100 CAVI 120 V 3.0 100

Cavi90

Type H Cavicloser



- 90 minutes fire integrity rating
- Closes and insulates reveals
- Suitable in cavities of 50mm and 75mm wide
- Acts as a DPC
- Integral fins

Introduction

This fire-rated version of the Type H closer offers a Cavi 90 (1½ hr) fire rating and is suitable for use in cavities of 50mm or 75mm. The detachable faceplate can be secured to either of the four faces of the insulating core so that it is positioned predominately forward or predominately back to suit the aesthetics and specific frame location sought.

References

- Building Regulations Document C L1 & L2
- Scottish Tech Standards Part D
- Robust Details
- British Standard 5628-3
- BRE Thermal Insulation Avoiding Risks

Cavi 90 Type H Cavicloser	Fire rated version of H1 and H2 closer
Exposure rating	Severe 30+mm setback. Very severe when checked
Cavity - standard sizes accommodated	50mm, & 75mm
Special cavity widths accommodated	No - see alternative models
Straight reveals	Yes - build in profile as supplied
Checked reveals	Yes - build in as illustrated
Product lengths	2.1m. 3.0m.
Acts as vertical dpc	Yes
Acts as insulator	Yes
Permits different frame positions	Yes
Frames fitted as work proceeds or later	Yes - first or second fix options
Timber frame / traditional construction	Both styles accommodated
Masonry skin styles	All popular flat faced masonry
Undulating masonry face finishes	Seek advice providing details of material
Acoustic insulator	Minimal reduction
Fire rated	Yes Prefix denotes 90mins (1½ hrs) integrity rating
Vertical and horizontal applications	Yes -see examples
Compatible with other cavity wall elements	No known restrictions
Securing ties supplied	Yes
Warranty	Yes
Pack sizes	Packs of 5 or 10 closers, pending length
Weight per pack	2.1m x 10 = 25kg. 3m x 5 = 18kgs.
Material	PVCU + rock fibre insulator + stainless ties
Colour	White extrusion
Manufacturing standard	BS EN ISO 9001:2000
Building Regulations	Yes regulations can be satisfied
NHBC / Zurich / Premier requirements	Yes requirements can be satisfied
'k' value of insulation used	0.035W/mK
Possible composite thermal resistance path	2.20 m² K/W (in 75mm cavity)
CFC free	Yes+ zero ODP
CAD drawing downloads available	Yes

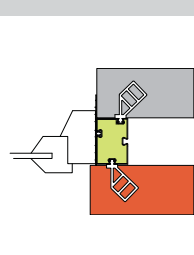
Specify

Cavi 90 Type H1 or Cavi 90 Type H2 (stipulate) fire rated cavicloser by Cavity Trays of Yeovil Somerset BA22 8HU to close cavity wall reveal to suit ____mm cavity. (enter actual cavity width dimensions).

Construction Advantage

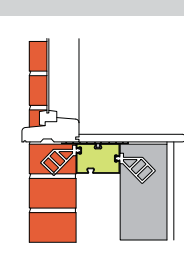
Align ties with any course height selected, locking into moulded channels that then provide conduits into which mortar can infill to maximise solidity of envelopment.

Checked Reveal



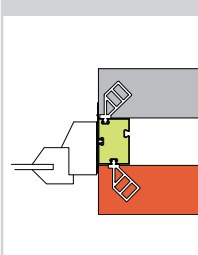
In a checked application the masonry offsetting is not restricted

Cill Detail



Typical cill application possible. Must interface with vertical closers

Standard Reveal



Frame position not restricted within compliant parameters

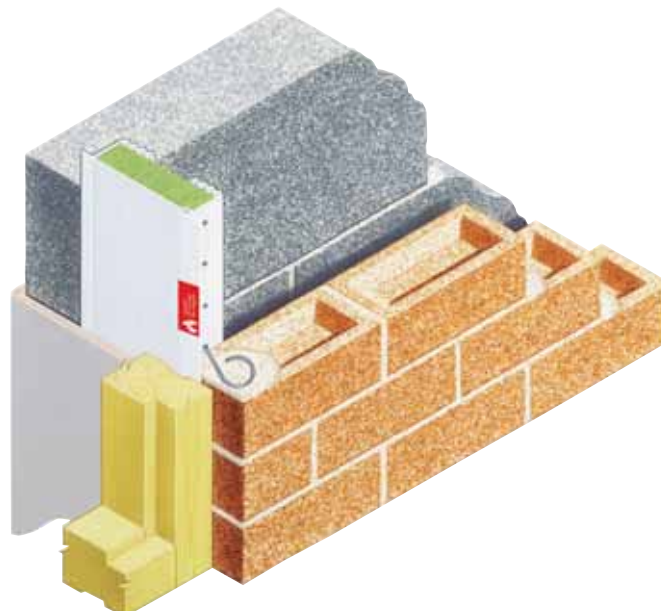


COMPUTER REFERENCE CODES:

CAVI 90 H1 2.1
CAVI 90 H1 3.0
CAVI 90 H1 3.6

Cavi60

Type WCA Cavicloser



- 60 minutes fire integrity rated stops
- Acts as a DPC
- Accompanying stainless steel anchoring ties
- For cavity widths up to 150mm
- Micro fins

Introduction

With a one hour fire rating and a maximum cavity width accommodated of 150mm, the Cavi 60 Type WCA provides a robust method of closing and protecting wider reveals. The large sound-absorbing insulation core is secured behind the heavy duty ribbed face which permits an unrestricted choice of frame positions within thermally efficient parameters.

References

- BS 476 (fire resistance testing)
- Part E details – resistance to the passage of sound
- Building Regulations Document C L1 & L2
- Scottish Tech Standards Part D
- Robust Details
- British Standard 5628-3
- BRE Thermal Insulation Avoiding Risks
- BS EN ISO 10211: Thermal bridges in building construction

Cavi 60 Type WCA Cavicloser	Fire rated closer for wide cavity applications
Exposure rating	30+mm setback. Severe Very severe when checked
Cavity - standard sizes accommodated	From 100mm up to 150mm
Special cavity widths accommodated	Yes bespoke closer service offered
Straight reveals	Yes - build in profile as supplied
Checked reveals	Yes - build in a checked illustration
Product lengths	2.1m, 3.0m
Acts as vertical dpc	Yes
Acts as insulator	Yes
Permits different frame positions	Yes
Frames fitted as work proceeds or later	Yes - first or second fix options
Timber frame* / traditional construction	Both styles accommodated *integral movement link
Masonry skin styles	All popular flat faced masonry
Undulating masonry face finishes	Seek advice providing details of material
Acoustic insulator	Yes - insulation promotes reduction
Fire rated	Yes Prefix denotes 60 mins (1 hr) fire rating
Vertical and horizontal applications	Yes - see examples
Compatible with other cavity wall elements	No known restrictions
Securing ties supplied	Yes
Warranty	Yes
Pack sizes	x 6 lengths
Weight per pack	2.1m x 6 = 20kg. 3m x 6 = 28.5kg.
Material	PVCU + rock wool insulator + stainless ties
Colour	White
Manufacturing standard	BS EN ISO 9001:2000
Building Regulations	Yes regulations can be satisfied
NHBC / Zurich / Premier requirements	Yes requirements can be satisfied
'k' value of insulation used	0.035W/mK
Possible composite thermal resistance path	2.37 m ² K/W (in 100mm cavity)
CFC free	Yes + zero ODP
CAD drawing downloads available	Yes

Specify

Cavi 60 Type WCA Cavicloser by Cavity Trays of Yeovil Somerset BA22 8HU to close cavity wall reveal and provide one hour fire integrity rating. State actual cavity width.

Construction Advantage

In timber frame applications direct screw fixing to the inner leaf is possible as closer has an integral friction link moulding offering some vertical differential movement provision. See also checked reveal hinge advantage.

Checked Reveal	Cill Detail	Standard Reveal	Head Detail
Turn hinged section 90° and the turned portion acts as an isolating barrier between the damp masonry and the checked portion of the frame	When used at cill level the closer must interface with vertical masonry to maintain fire integrity	Typical wide cavity straight application. See Construction Advantage	Where lintel styles permit the Type WCA can be incorporated across the reveal opening and interface with vertical closers

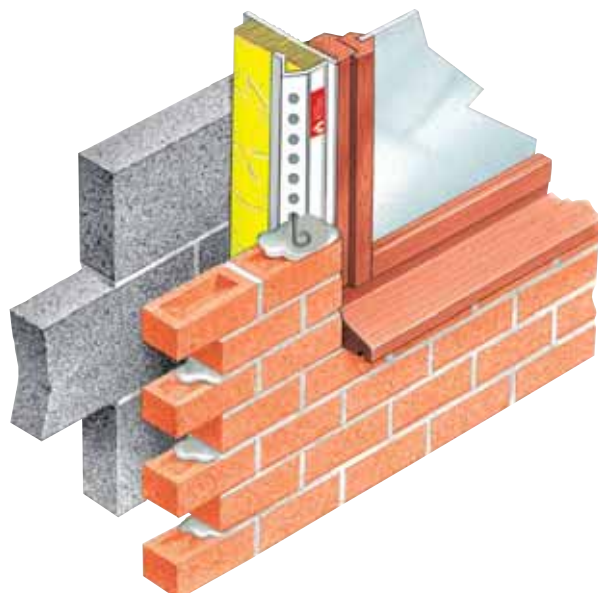


COMPUTER REFERENCE CODES:
 CAVI 60 WCA 2.1 100 CAVI 60 WCA 3.0 100
 CAVI 60 WCA 2.1 150 CAVI 60 WCA 3.0 100

Cavi60

Type V170 Cavicloser

- One hour fire rating
- Cavity range 100mm to 170mm
- Acts as a dpc
- Closes and insulates reveal
- Acoustic reduction insulator



Introduction

Cavities up to 170mm maximum can be economically closed with the Cavi 60 MWR V 170 which has an acoustic reducing insulator facing into the cavity and an accompanying fire integrity rating of one hour. This one piece contract closer is designated MWR – Maximum Width Range.

References

- BS 476 (fire resistance testing)
- Part E details – resistance to the passage of sound
- Building Regulations Document C L1 & L2
- Scottish Tech Standards Part D
- Robust Details
- British Standard 5628-3
- BRE Thermal Insulation Avoiding Risks
- BS EN ISO 6946:1997

Cavi 60 MWR Type V170 Cavicloser	Fire rated closer within maximum width range
Exposure rating	30+mm setback. Severe Very severe when checked
Cavity - standard sizes accommodated	From 100mm up to 170mm
Special cavity widths accommodated	Yes - bespoke closer service state cavity width
Straight reveals	Yes - build in profile as supplied
Checked reveals	Yes - turn hinged section 90° prior to use
Product lengths	2.1m, 3.0m
Acts as vertical dpc	Yes
Acts as insulator	Yes
Permits different frame positions	Yes
Frames fitted as work proceeds or later	Yes - first or second fix options
Timber frame / traditional construction	Both styles accommodated
Masonry skin styles	All popular flat faced masonry
Undulating masonry face finishes	Seek advice providing details of material
Acoustic insulator	Yes reduces direct and flanking transmission
Fire rated	Yes Prefix denotes 60mins (1hr) fire integrity rating
Vertical and horizontal applications	Yes –see examples
Compatible with other cavity wall elements	No known restrictions
Securing ties supplied	Yes
Warranty	Yes
Pack sizes	Packs contain 6 lengths
Weight per pack	2.1m x 6 =13.5 kg. 3m x 6 = 19kg.
Material	PVCU + rock fibre insulator + stainless ties
Colour	White extrusion
Manufacturing standard	BS EN ISO 9001:2000
Building Regulations	Yes regulations can be satisfied
NHBC / Zurich / Premier requirements	Yes requirements can be satisfied
'k' value of insulation used	0.035W/mK
Possible composite thermal resistance path	2.60 m ² K/W (in 100mm cavity)
CFC free	Yes + zero ODP
CAD drawing downloads available	Yes

Specify

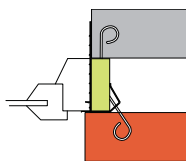
Cavi 60 MWR Type V fire rated + acoustic cavicloser by Cavity Trays of Yeovil Somerset BA22 8HU to close cavity wall reveal.

Cavi 60 MWR Type V to suit ____mm cavity. (enter appropriate cavity width dimensions).

Construction Advantage

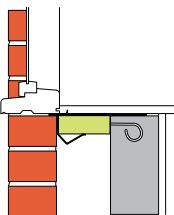
Checked reveals instantly accommodated by turning the hinged section 90°. The resulting profile also introduces an isolation strip between the damp masonry and the section of the frame in check.

Checked Reveal



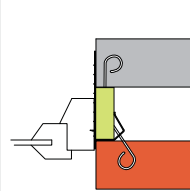
Checked reveals accommodated - see Construction Advantage

Cill Detail



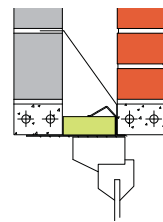
Thermal zoning can be introduced at cill level in usual applications

Standard Reveal



The position of the frame is unrestricted within compliant parameters

Head Detail



Pending lintel style, the closer can be used across the opening head



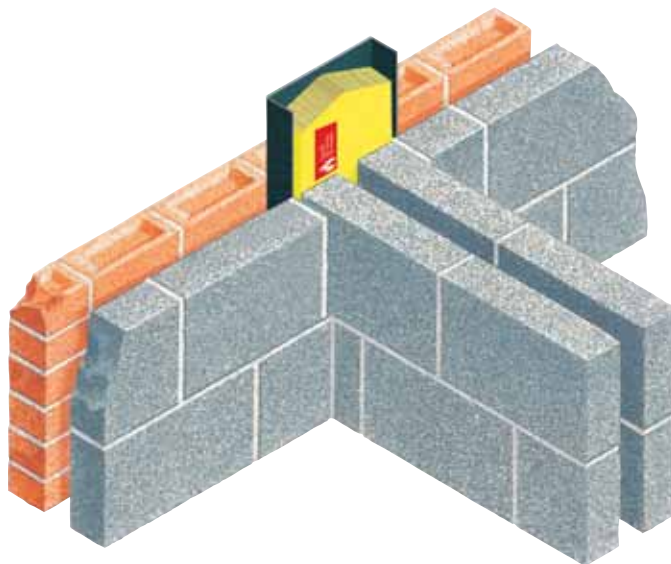
COMPUTER REFERENCE CODES:

CAVI 60 V170 2.1 50 CAVI 60V170 3.0 50
CAVI 60 V170 2.1 75 CAVI 60 V170 3.0 75
CAVI 60 V170 2.1 100 CAVI 60 V170 3.0 100

Cavi240

Type PWIB

- Fire-rated integrity barrier
- Acts as a DPC
- Reduces acoustic flanking transmission
- Preformed ready to use, will not sag or distort



Introduction

The Type PWIB promotes acoustic compartmenting, addressing flanking transmission (sound attenuation) whilst ensuring the arrangement protects the party wall from damp being transmitted from the perimeter skin. Available in dimensions and profiles to suit solid and cavity party walls interfacing with cavity walls with specified cavity widths.

References

- Separating Wall 4.20 – Limiting thermal bridging and air leakage – Robust Details
- BS 476 (fire resistance testing)
- Part E details – resistance to the passage of sound
- Building Regulations Document C L1 & L2
- Scottish Tech Standards Part D
- British Standard 5628-3
- BRE Thermal Insulation Avoiding Risks

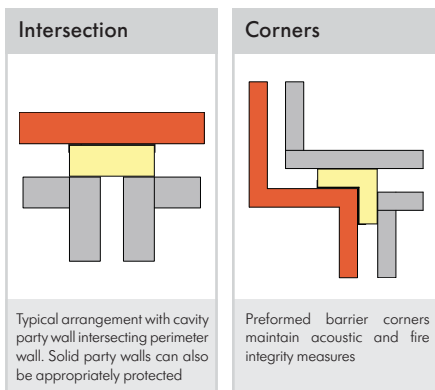
Cavi 240 Type PWIB	Party Wall Three Function Integrity Barrier
Exposure rating	Very severe
Cavity - standard sizes accommodated	Bespoke up to 100mm maximum
Special cavity widths accommodated	Yes - state actual cavity width requirement
Straight party wall intersections	Yes - build in profile as illustrated
Corner and stepped intersections	Yes - matched detail profiles
Product lengths	2.4m
Acts as vertical dpc	Yes
Acts as insulator	Yes
Installed as wall is raised	Yes – insulator compresses for optimum fit
Timber frame / traditional construction	Both styles accommodated
Masonry skin styles	Most. Special version for undulating/split finish
Acoustic insulator / barrier	Yes – insulation reduces direct and flanking sound
Fire rated	Yes Cavi 240 prefix denotes 240 mins (4 hrs) rating
Vertical applications	Yes
Compatible with most cavity wall elements	Yes subject to normal masonry finishes
Securing ties supplied	NA enveloped compression as built in
Pack sizes	Packs contain 3 lengths
Weight per pack	13kg
Material	Polypropylene dpc + rock wool insulator
Colour	Black + yellow
Manufacturing standard	BS EN ISO 9001:2000
Building Regulations	Yes regulations can be satisfied
NHBC / Zurich / Premier requirements	Yes requirements can be satisfied
'k' value of insulation used	0.035W/mK
Possible composite thermal resistance path	1.40 m ² K/W
CFC free	Yes + zero ODP
CAD drawing downloads available	Yes

Specify

Cavi 240 Type PWIB by Cavity Trays of Yeovil Somerset BA22 8HU to close party wall / external cavity wall vertical intersections. State actual remaining cavity width where party wall intersects and dimensions of solid or cavity party wall.

Construction Advantage

Extended dpc section to the sides protect the acoustic insulation from being surface contaminated with mortar during construction. that could support hygroscopic inward transmission of moisture if contaminated.



COMPUTER REFERENCE CODES:
PWIB (STATE CAVITY FILL WIDTH REQUIRED AND PARTY WALL WIDTH)



Best Practice Working for You

An Example of Product Development

The Cavi 60 Type SAF (Sloping + Acoustic + Fire) was developed following investigations into timber frame construction and cavity compartmenting.

When there is a requirement for a cavity acoustic barrier, there is commonly also an accompanying need for a cavity fire barrier. Cavity Trays Ltd has combined both functions into one product, but importantly at the same time has developed a new product shape in the form of a parallelogram.

The result is the improved and more cost effective way of protecting cavity walls shown opposite. A way that naturally deflects forward any water penetrating the cavity. It also safeguards against cavity sound transmission and provides twice the level of fire integrity normally sought of a cavity fire stop. We believe it to be the most cost effective way available of establishing all the requisite functions within the cavity wall. It supersedes some previous options. Importantly it offers an improved and more reliable way to construct:

During the course of our survey, conventional rectangular stops were sometimes witnessed within the cavity without any dpc tray or water deflecting protection. Penetrating water was observed pooling on the upper surface of the rectangular stop against the timber frame membrane. This is not good practice. The timber frame membrane is not designed to have water pooling against it during the life of the structure and eventual deterioration of the timber frame is the long-term potential legacy.

In contrast our best practice design naturally deflects forward any water penetrating the cavity. It also safeguards against cavity sound transmission. The Cavi 60 prefix denotes a fire integrity rating of sixty minutes. Thus three solutions are provided all in one product.

The Cavi 60 Type SAF may be used with our accompanying hardcap cavitray in general applications, or without the hardcap cavitray in closing applications where conditions permit.

The Cavi 60 Type SAF - Best practice with multi-functional advantage.

Note: Our Acoustic Barrier listed in previous publications is no longer available. It has been superseded by this multi-functional product which offers the specifier a more cost effective, easier to use and quicker to install option. Please specify clearly to ensure your intended choice is ultimately used on the project in question.

Cavi60

Type SAF Stop

- Acoustic barrier
- Fire barrier
- Protective shape prevents water tracking
- Easy linking and lapping



Introduction

This compressible acoustic and fire cavity barrier has sloping upper and lower surfaces that ensure penetrating water is deflected forward. Considered the most cost-effective way of establishing all three qualities within the cavity wall. Sloping shape means integrity can be maintained whenever lengths are lapped. Optional hard cap dpc cavitray ensures maximum protection. The compliant oriented shape is simply compressed and positioned into cured masonry. Placement can be without tray if appropriate (such as shown in some Robust Details) Alternatively an optional cavitray caps over the upper sloping surface.

References

- BS 476 (fire resistance testing)
- Part E details – resistance to the passage of sound
- Building Regulations Document C L1 & L2
- Scottish Tech Standards Part D
- Robust Details

Cavi 60 Type SAF Stop	Sloping Acoustic Fire Rated Cavity Stop/Sock
Exposure rating	Very severe
Cavity - standard sizes accommodated	From 100mm
Special cavity widths accommodated	Yes - state actual cavity width requirement
Common cavity wall applications	Yes - build in profile as illustrated
Corners and links	Angled profile laps whilst maintaining integrity
Product lengths	1.2m & 2.4m
Protective sleeving deflects water forward	Yes - at all times even where lapped
Acts as insulator	Yes insulates entire cavity width – see below
Installed as wall is raised	Yes – compresses for optimum fit in cured masonry
Timber frame / traditional construction	Both styles accommodated
Masonry skin styles	Accommodate most types of masonry finish
Acoustic insulator	Yes – reduces direct and flanking transmission
Fire rated	Yes Cavi 60 prefix denotes 60 mins (1 hr) rating
Horizontal and vertical applications	Yes – horizontal and numerous vertical uses
Compatible with other cavity wall elements	Yes subject to masonry finishes being appropriate
Securing ties supplied	NA. Friction fit + naturally occurring ties support
Pack sizes	Packs contain 10 lengths
Thermal resistance path	Exceeds minimum requirement
Weight per pack	10 kg
Colour	Red
Manufacturing standard	BS EN ISO 9001:2000
Building Regulations	Yes permits regulations to be satisfied
NHBC / Zurich / Premier requirements	Yes permits requirements to be satisfied
'k' value of insulation used	0.035W/mK
Possible composite thermal resistance path	2.86 m ² K/W
CFC free	Yes + zero ODP
CAD drawing downloads available	Yes

Specify

Cavi 60 Type SAF Stop by Cavity Trays of Yeovil Somerset BA22 8HU, to suit cavity width of ____mm. Compress and friction fit within cavity, taking advantage of naturally occurring wall ties as appropriate. Overlap adjoining lengths to maintain protection integrity to appropriate inner leaf course. Link adjoining lengths to maintain acoustic and fire integrity. Fit optional hard cap tray if required.

Construction Advantage

Use of the Cavi 60 Type SAF Stop eliminates areas of unprotected masonry between dpc and stop, identified within Robust Detail E-FC-3 (external flanking wall junction).

Typical Section	Barrier Overlap	With Cavitray	See Advantage
Typical section showing barrier sloping forward towards outside skin	Integrity maintained where barriers are lapped	Shown with hard cap cavitray to upper surface	Using the SAF instead of the conventional approach above, will provide more protection. See Construction Advantage

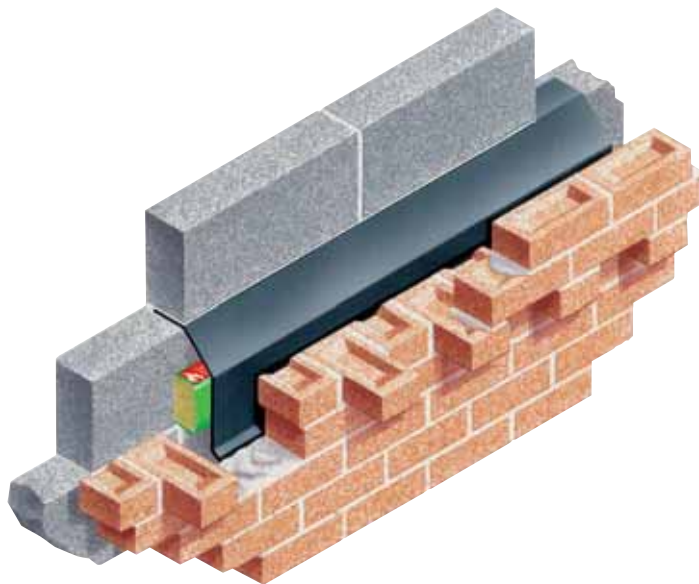
COMPUTER REFERENCE CODES:
CAVI 60 SAF STOP



Cavi120

Combined Fire & Acoustic Stop

- Two hours fire rating
- Acoustic barrier
- Protective tray
- Drop cloak independent of outer skin



Introduction

Horizontal fire barrier cavity compartmenting plus a drop cloak dpc tray. Acts as a fire and acoustic stop and protects against moisture bridging. The support from the inner skin only means this product can be introduced into cured walls prior to subsequent masonry lifts.

References

- BS 476 (fire resistance testing)
- Part E details – resistance to the passage of sound
- Building Regulations Document C L1 & L2
- Scottish Tech Standards Part D
- Robust Details
- British Standard 5628-3
- BRE Thermal Insulation Avoiding Risks

Cavi 120 Combined Fire & Acoustic Stop	Drop cloak with cavity stop barrier
Exposure rating	Very severe
Cavity - standard sizes accommodated	From 50 up to 100mm
Special/unusual cavity widths accommodated	Yes - state actual cavity width requirement
Common cavity wall applications	Yes - external skin not punctuated for support
Corners and links	Preformed linking angles
Product lengths	1.2m
Protective sleeving deflects water forward	Yes - at all times even where lapped
Acts as insulator	Yes insulates entire cavity width – see below
Installed as wall is raised	Yes – compresses for optimum fit in cured masonry
Timber frame / traditional construction	Both styles accommodated
Masonry skin styles	Compatible with most types of masonry finish
Acoustic insulator	Yes – reduces flanking transmission
Fire rated	Yes Prefix denotes 120 mins (2 hrs) rating
Horizontal applications	Yes
Compatible with other cavity wall elements	Yes subject to masonry finishes being appropriate
Securing ties supplied	NA - friction fit + builds into inner leaf only
Pack sizes	Normally packs of 4 lengths
Weight per pack	5.5kg.
Material	Rock wool insulator
Colour	Black
Manufacturing standard	BS EN ISO 9001:2000
Building Regulations	Yes regulations can be satisfied
NHBC / Zurich / Premier requirements	Yes requirements can be satisfied
'k' value of insulation used	0.035W/mK
Possible composite thermal resistance path	1.43 m ² K/W (in 50mm cavity)
CFC free	Yes + zero ODP
CAD drawing downloads available	Yes

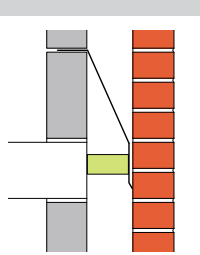
Specify

Cavi 240 Combined Fire Integrity Stop and Drop Cloak Barrier by Cavity Trays of Yeovil Somerset BA22 8HU. Incorporate within cavity, compressing within cavity and building support projection into inner skin. Cavity width _____ mm (stipulate).

Construction Advantage

Building into the inner skin only permits placement to be introduced into equally raised cured masonry. Cured masonry permits the compressive qualities of the barrier to be exercised to achieve optimum functionality and linking without adversely affecting masonry laying. (For cost effective alternative approach, see entry on page 19).

Section



Typical placement showing fire and acoustic stop with drop cloak not punctuating the external skin

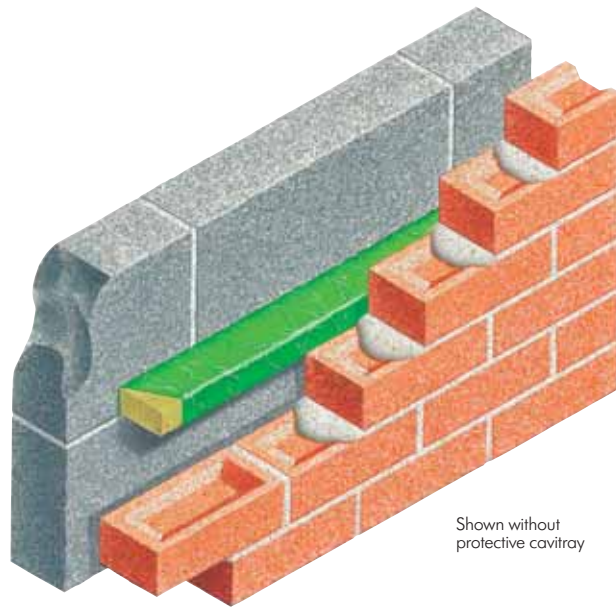
COMPUTER REFERENCE CODES:
CAVI 120 CFA STOP



Cavi240

Type CFIS

- 240 minutes fire integrity rated stops
- Easy friction fit
- Accompanying moisture protection measures
- For cavity widths up to 100mm



Shown without protective cavitray

Introduction

Non-combustible rock mineral insulator promoting acoustic and fire barrier qualities enveloped within a green poly-sleeve. May be compressed to suit cavities of most popular sizes. Preformed trays (Arresting Barriers or Dropcloaks) available to provide deflective qualities within cavity.

References

- BS 476 (fire resistance testing)
- Part E details – resistance to the passage of sound
- Building Regulations Document C L1 & L2
- Scottish Tech Standards Part D
- Robust Details
- British Standard 5628-3
- BRE Thermal Insulation Avoiding Risks

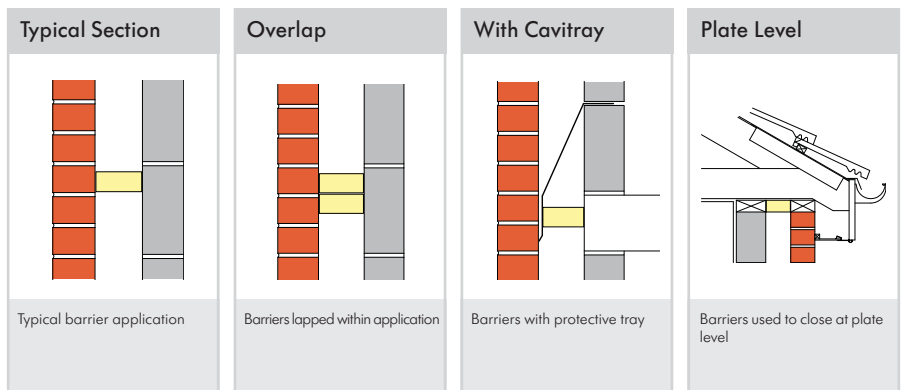
Cavi 240 Type CFIS	Cavichex Fire Integrity Stop
Exposure rating	Very severe
Cavity - standard sizes accommodated	Up to 100mm maximum
Special cavity widths accommodated	Yes – compression fit
Common cavity wall applications	Yes - build in cavichex as illustrated
Corners and links	Lap and butt options
Product lengths	1.2m and 2.4m
Protective sleeving	Yes
Acts as insulator	Yes provides highest fire rating – see below
Installed as wall is raised	Yes – compresses for optimum fit in cured masonry
Timber frame / traditional construction	Both styles accommodated
Masonry skin styles	Compresses to accommodate most skin finishes
Acoustic insulator	Yes – reduces direct and flanking transmission
Fire rated	Yes Cavi 240 prefix denotes 240 mins (4 hrs) rating
Horizontal and vertical applications	Yes – horizontal and vertical uses
Compatible with other cavity wall elements	Yes – dpc cavitray and caviweep compatible
Securing ties supplied	NA - friction fit + any appropriate ties
Pack sizes	Packs contain 10 lengths
Weight per pack	7.5 kg
Material	Rock wool insulator within polysleeve
Colour	Green
Manufacturing standard	BS EN ISO 9001:2000
Building Regulations	Yes regulations can be satisfied
NHBC / Zurich / Premier requirements	Yes requirements can be satisfied
'k' value of insulation used	0.035W/mK
Possible composite thermal resistance path	2.86 m ² K/W (in 100mm cavity)
CFC free	Yes + zero ODP
CAD drawing downloads available	Yes

Specify

Cavi 240 Type CFIS Cavichex fire integrity stop by Cavity Trays of Yeovil Somerset BA22 8HU. Incorporate within cavity, compressing and placing on naturally occurring ties if appropriate. Cavity width ____mm (stipulate). Specify if optional cavitray protection to suit is required.

Construction Advantage

The four hour rating is the highest currently achievable in this style of barrier and permits the specifier to introduce a higher level of fire protection rating within the financial restraints normally associated with alternatives with lower ratings.



COMPUTER REFERENCE CODES:
CFIS 1.2
CFIS 2.4

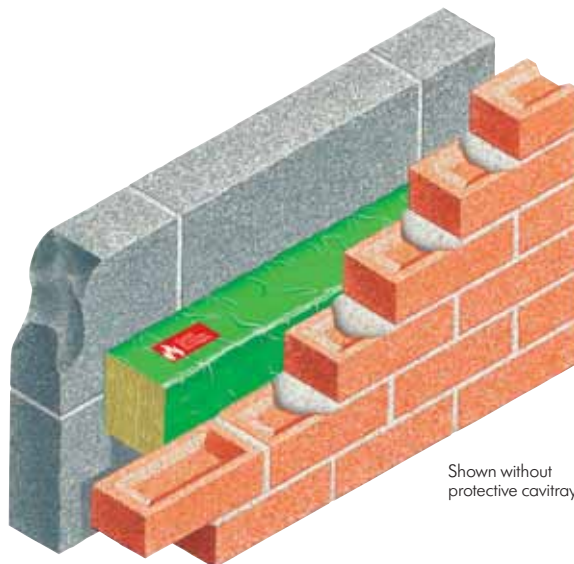


Cavi60

MWR 200

22

- One hour fire rated barrier
- Acoustic barrier
- Friction fit
- 100mm to 200mm cavity range



Introduction

This is a larger version of the Type CFIS and accommodates cavities from 100mm up to 200mm. The Cavi 60 prefix denotes one hours fire rating. The insulating core promotes acoustic suppression. Thus this model can be used to address both fire and sound barrier requirements.

References

- BS 476 (fire resistance testing)
- Part E details – resistance to the passage of sound
- Building Regulations Document C L1 & L2
- Scottish Tech Standards Part D
- Robust Details
- British Standard 5628-3
- BRE Thermal Insulation Avoiding Risks

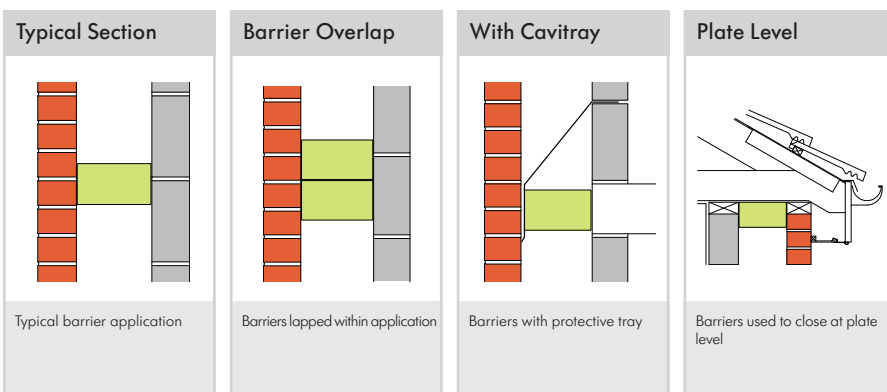
Cavi 60 MWR 200	Cavichек Fire and Acoustic Integrity Stop
Exposure rating	Very severe
Cavity - standard sizes accommodated	Up to 100mm up to 200mm maximum
Special cavity widths accommodated	Yes – State actual cavity dimension
Common cavity wall applications	Yes - build in cavichек as illustrated
Corners and links	Lap and butt options
Product lengths	1.2m and 2.4m
Protective sleeving	Yes
Acts as insulator	Yes - acts as thermal & fire barrier – see below
Installed as wall is raised	Yes – compresses for optimum fit in cured masonry
Timber frame / traditional construction	Both styles accommodated
Masonry skin styles	Accommodate most types of finish to either skin
Acoustic insulator	Yes – reduces direct and flanking transmission
Fire rated	Yes Prefix denotes 60 mins (1 hr) fire rating
Horizontal and vertical applications	Yes – horizontal and vertical uses
Compatible with other cavity wall elements	Yes – dpc cavitray and caviweep compatible
Securing ties supplied	NA. Friction fit + naturally occurring traditional ties
Pack sizes	Packs contain 10 lengths
Weight per pack	10kg
Material	Rock wool insulator within polysleeve
Colour	Green
Manufacturing standard	BS EN ISO 9001:2000
Building Regulations	Yes regulations can be satisfied
NHBC / Zurich / Premier requirements	Yes requirements can be satisfied
'k' value of insulation used	0.035W/mK
Possible composite thermal resistance path	2.37 m ² K/W
CFC free	Yes + zero ODP
CAD drawing downloads available	Yes

Specify

Cavi 60 MWR 200 Cavichек Fire Integrity Stop by Cavity Trays of Yeovil Somerset BA22 8HU. Incorporate within cavity, compressing and placing on naturally occurring ties if appropriate. Cavity width ____mm (stipulate). Specify if optional cavitray protection to suit is required.

Construction Advantage

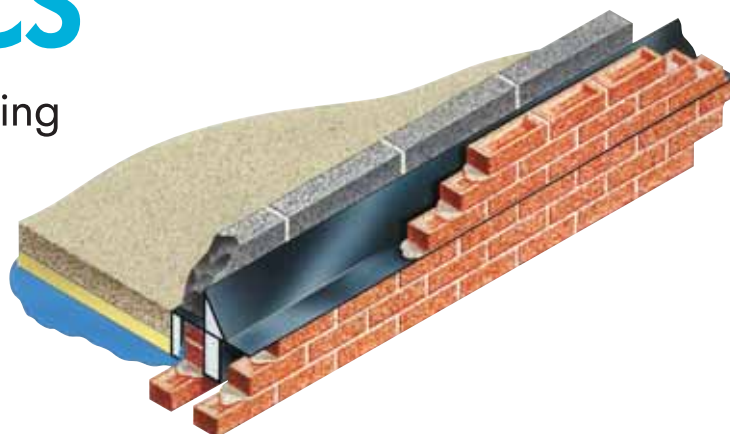
Extensively used at plate level to provide cost effective closing with sound and fire barrier qualities. Establishes one hour fire rated protective separation between cavity and roof space.



COMPUTER REFERENCE CODES:
CAVI 60 MWR 20

Type GBFICS

Ground Bearing Floor Insulating Cavitray System (for closing base of cavity wall)



- Multi-functional one placement product
- Radon and methane cavity barrier
- Enhanced perimeter insulation

Introduction

When installed around the perimeter of a building at ground floor level the requirements of Robust Details can be satisfied with use of the Type GBFICS. Manufactured from profiled semi-rigid damp course, the Type GBFICS provides the requisite horizontal dpc requirement to both skins of the cavity wall. At the same time the cavity is closed and capped, establishing an integral barrier to guard against radon or methane gas rising upwardly via the cavity and permeating the building envelope. The inboard section extends sufficiently to link with the gas grade slab membrane. The integral insulation maximises thermal integrity around the base of the building.

References

- Investigating Rainwater Penetration of Modern Buildings (Masonry 129)
- Building Regulations Part L
- British Standard 5628-3
- BRE Thermal Insulation Avoiding Risks
- Website: cavitytraystandards.co.uk
- Robust Details
- Scottish Tech Standards Part D

Specify

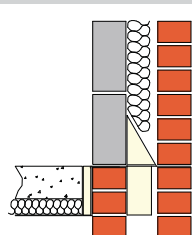
Type GBFICS by Cavity Trays of Yeovil Somerset BA22 8HU to close base of external cavity wall. Profile / dimensions to be agreed and schedule issued.

Construction Advantage

When used on contaminated ground, the Type GBFICS permits compliance of radon and methane protection requirements to be established and at the same time the thermal insulation standards to be maximised in one product placing.

Type GBFICS	Closes external cavity wall at ground floor level
Exposure rating	Very severe pending profile
Cavity - standard sizes accommodated	Available to suit all cavity dimensions
Special cavity widths accommodated	Yes - all dimensions variable
Straight reveals	Sections available to link with reveal arrangement
Product lengths	2.4m
Reveals	Sections available to link with reveal arrangement
Corners	Internal, external and stepped available
Acts as vertical dpc	NA
Acts as insulator	Yes
Changes of level	Moulded steps to link at level changes
Frames fitted as work proceeds or later	NA
Timber frame / traditional construction	Both styles accommodated
Masonry skin styles	All popular flat faced masonry
Undulating masonry face finishes	Normally unaffected by split or undulating faces
Acoustic insulator	NA
Fire rated	NA
Vertical and horizontal applications	Horizontal only
Compatible with other cavity wall elements	Very few restrictions, pending levels
Securing ties supplied	NA
Pack sizes	Depends on profile size
Weight per pack	Dependent on profile. Average pack weight 15kg
Material	Polypropylene dpc + polystyrene BS 3836-1986
Colour	Black with white insulator
Manufacturing standard	BS EN ISO 9001:2000
Building Regulations	Yes regulations can be satisfied
NHBC / Zurich / Premier requirements	Yes requirements can be satisfied
'k' value of insulation used	0.038W/mK
Possible composite thermal resistance path	2.63 m ² K/W (in 100mm cavity)
CFC free	Yes+ zero ODP
CAD drawing downloads available	Yes

Typical Section



Water arrested by cavitray upstand is evacuated via caviweeps

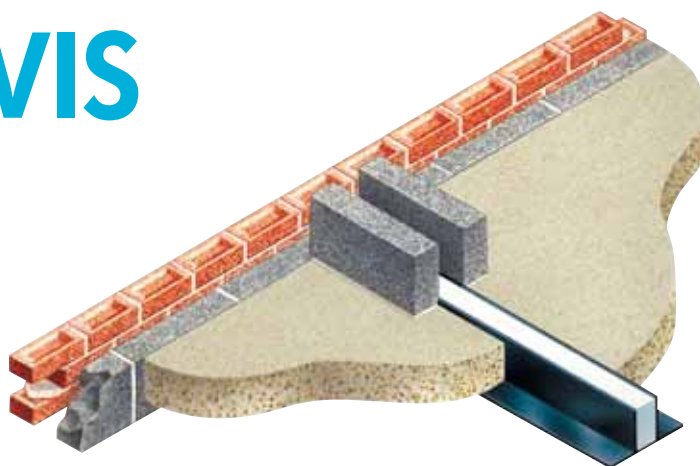
COMPUTER REFERENCE CODES:
CBFICS (



Type GBPWIS

Ground Bearing Party Wall Insulating System (for closing base of party cavity wall)

- Eliminates need for temporary formwork
- Creates and closes cavity arrangement.
- Establishes party wall spillage channel
- Enhanced perimeter insulation
- Multi-functional one placement product



Introduction

The Ground Bearing Party Wall Insulating System is secured in position between semi-detached units, centrally along the line of the party wall. It permits the oversite concrete to then be laid without the need of temporary formwork or masonry. The Type GBPWIS is thus enveloped within the construction and additionally provides slab edge dpc corroboration with cavity insulation infill. If an open cavity (channel) is required as per NHBC 6.2 (d), the insulation can be removed once the oversite concrete has cured. This system is available in dimensions to suit all cavity widths and slab thicknesses.

References

- Investigating Rainwater Penetration of Modern Buildings (Masonry 129)
- Building Regulations Part L
- British Standard 5628-3
- BRE Thermal Insulation Avoiding Risks
- Website: cavitytraystandards.co.uk
- Robust Details
- Scottish Tech Standards Part D

Specify

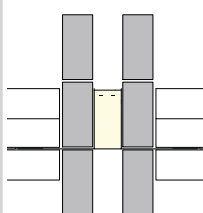
Type GBPWIS by Cavity Trays of Yeovil Somerset BA22 8HU for use at the base between skins of party cavity wall. Profile / dimensions to be agreed to suit party wall dimensions.

Construction Advantage

Dispenses with usual formwork and offers a speedy way to commence the party wall arrangement. The profile is enveloped within the construction and the removable insulation leaves a drainage channel in excess of the dimensions required of the NHBC to protect from internal flooding / water wash from one dwelling to another.

Type GBPWIS	Closes and creates channel within cavity party wall
Exposure rating	NA
Cavity - standard sizes accommodated	Available to suit all cavity dimensions
Special cavity widths accommodated	Yes – all dimensions variable
Straight reveals	NA
Checked reveals	NA
Product lengths	2.44m.
Acts as vertical dpc	As dpc at slab edges
Acts as insulator	Yes if option to leave insulation insitu is selected
Corners	Change of wall direction angles available
Perimeters wall compatibility	Links available to unite with gas cavity barriers if fitted
Timber frame / traditional construction	Both styles accommodated
Masonry skin styles	Masonry type does not affect functionality
Undulating masonry face finishes	NA
Acoustic insulator	NA
Fire rated	NA
Vertical and horizontal applications	Horizontal
Compatible with other cavity wall elements	See Corners / Perimeter wall entries above
Securing ties supplied	NA
Pack sizes	Depends on profile size
Weight per pack	Dependent on profile. Average pack weight 15kg
Material	Polypropylene dpc + polystyrene BS 3836-1986
Colour	Black with white insulator
Manufacturing standard	BS EN ISO 9001:2000
Building Regulations	Yes regulations can be satisfied
NHBC / Zurich / Premier requirements	Yes requirements can be satisfied
'k' value of insulation used	0.038W/mK
Possible composite thermal resistance path	2.60 m ² K/W with full insulation insitu
CFC free	Yes+ zero ODP
CAD drawing downloads available	Yes

Typical Section



Insulation can be fully or partially removed if NHBC channel option is required

COMPUTER REFERENCE CODES:
CAVI FORMER (STATE DIMENSIONS)



Optimised Thermal + Acoustic + Fire Integrity



Specific Caviclosers and Cavicheck stops offer multi functionality and can provide fire resistance and acoustic control qualities to permit construction to comply with the requirements of the current Building Regulations.



Select appropriate single function or multi function products to help fulfil the construction standard you seek.

Products incorporating mineral / rock wool insulating cores are not classified as a possible human carcinogen as defined by the current HSE 'CHIP' Regulations and EU directive 97/69/EC.

Masonry materials and masonry finishes influence performance. The position of the window or door-frame likewise affects the heat loss path as does the insulation value of any cavity closer incorporated. All solutions should address thermal bridging and condensation and promote an airtight detail to satisfy the minimum thermal resistance path. At all times one should seek to optimise the performance of the cavity wall reveal.

In this idealistic example the frame is positioned over the cavity. The thermal resistance has been measured ABC to include the closer insulation and the internal wall finish only.

An insulated closer will aid thermal efficiency and compliance of regulations, conditional on all associated and adjacent work being constructed to the most beneficial design using materials that promote optimum thermal performance with frames positioned to provide maximum thermal efficiency in accordance with best practice and legislation as defined within the Building Regulations, British Standards & Robust Details.

Adiabatic classification of an insulating medium means the calculation has been carried out in isolation of adjacent elements on the basis there is no heat loss or gain.

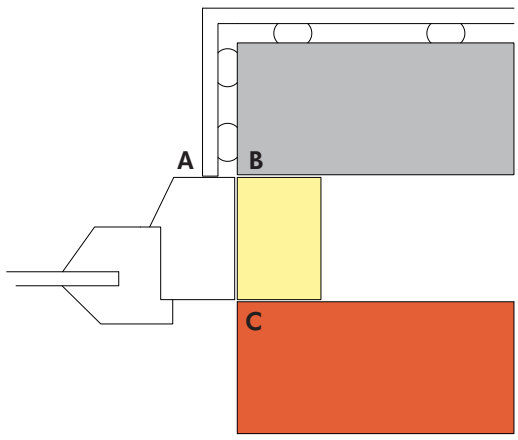
Thermal resistance is the term given to the measure of thermal resistance of a particular thickness of material. It is equal to the thickness of material (measured in metres) divided by the conductivity of that material.

All the resistances within a construction detail are added together to establish the overall resistance of that detail. The reciprocal of the combined thermal resistances of materials in the construction, including surfaces, air spaces, thermal links, air gaps and fixings, make up the U-value calculation.

Sound insulation is the ability of structure or element to reduce the transmission of sound through it, being normally measured within 100-4000Hz.

Sound absorption is the loss of sound energy on reflection at a surface and is not a substitute of sound insulation.

Flanking sound is sound not transmitted via a common building element but transmitted indirectly via paths such as cavities.



IMPORTANT Request our Main Manual for details of our extensive range of cavity trays, which standards and quality certifications are applicable to specific types, and background information on construction considerations.

ISO 9001
Certificate No. 1172

BUILDING CONTROL
LANTAS APPROVED

CE

BBA
APPROVAL
SCHEME
MEMBER

NABC
Confirmed Cavitytrays meet technical requirements

enjoy the benefit of four generations of experience

In 1920 a West Country family of builders started making their own damp courses, flashings and cavitrays, the fourth generation of the same family continue the tradition.

The Company is now called **Cavity Trays Limited** and can claim more experience, more case histories and more know-how than any other company in this specialised field.

This publication lists the range of cavitclosers that are now also available from the Company. The only cavity tray manufacturer awarded European Technical Approval has thus widened the options available to the specifier.

Enjoy the benefit of four generations of experience and proven performance, by clearly specifying **Cavity Trays Limited** of Yeovil.



Cavity Trays 

Cavity Trays Limited
Administration Centre
Yeovil Somerset BA22 8HU England UK
Tel 01935 474769 Fax 01935 428223
www.cavitytrays.com