

MAKING THE RIGHT CONNECTIONS



Product Guide



TERMINAL BLOCKS & CONN
CABLE GLANDS & GROMMETS
WEATHERPROOF CONNECTORS
LEDs & OPTOELECTRONICS
DIN RAIL PCB HOUSINGS
SWITCHES
LAMP HOLDERS & LIGHTING ACCESSORIES
RELAYS, FUSES & BUZZERS



E-MECH CONNECTORS

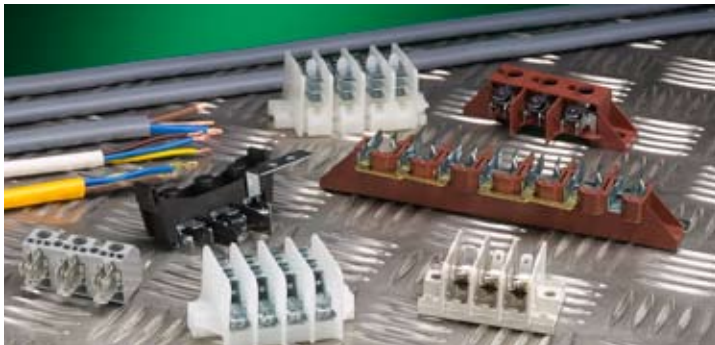
Example Applications - General Industrial & Domestic Appliances, HVAC, Lighting, Installation, Vending, Gaming, Panel Building, High Temperature Applications, Heat Trace Equipment

Material options

- Polyamides to UL94-V2, UL94-V0
- IEC/EN 60335-1 'No Flame' material, to meet the stringent <2 sec burn 750°C GWT
- Ceramic / Steatite

Nylon Pillar Terminal Blocks

- Standard Pillar ■ Plug & Socket ■ Screw - Pushwire
- Fused Terminal Blocks for 5 x 20mm / 1.25" fuses
- Current ratings from 17.5A to 76A (EN60998-1)
- Further options include Wire Protection, Barrier Inserts, Raised/Low Bases and Custom Printing



Tab Connectors

- Screw - Tab / Tab - Tab
- Various tab configurations offered
- 4.8 and 6.3mm 'Fast-On' connections
- Build-your-own connector with modular unit

Chassis / Panel Mount Connectors

- Safe termination internally or externally to application
- Suitable for harness assembly
- Snap or Screw fit
- Screw - Tab / Tab - Tab
- Earth bracket option
- Integrated cable clamps & fuseholders
- Ideal for Domestic Appliances and 'White Goods'



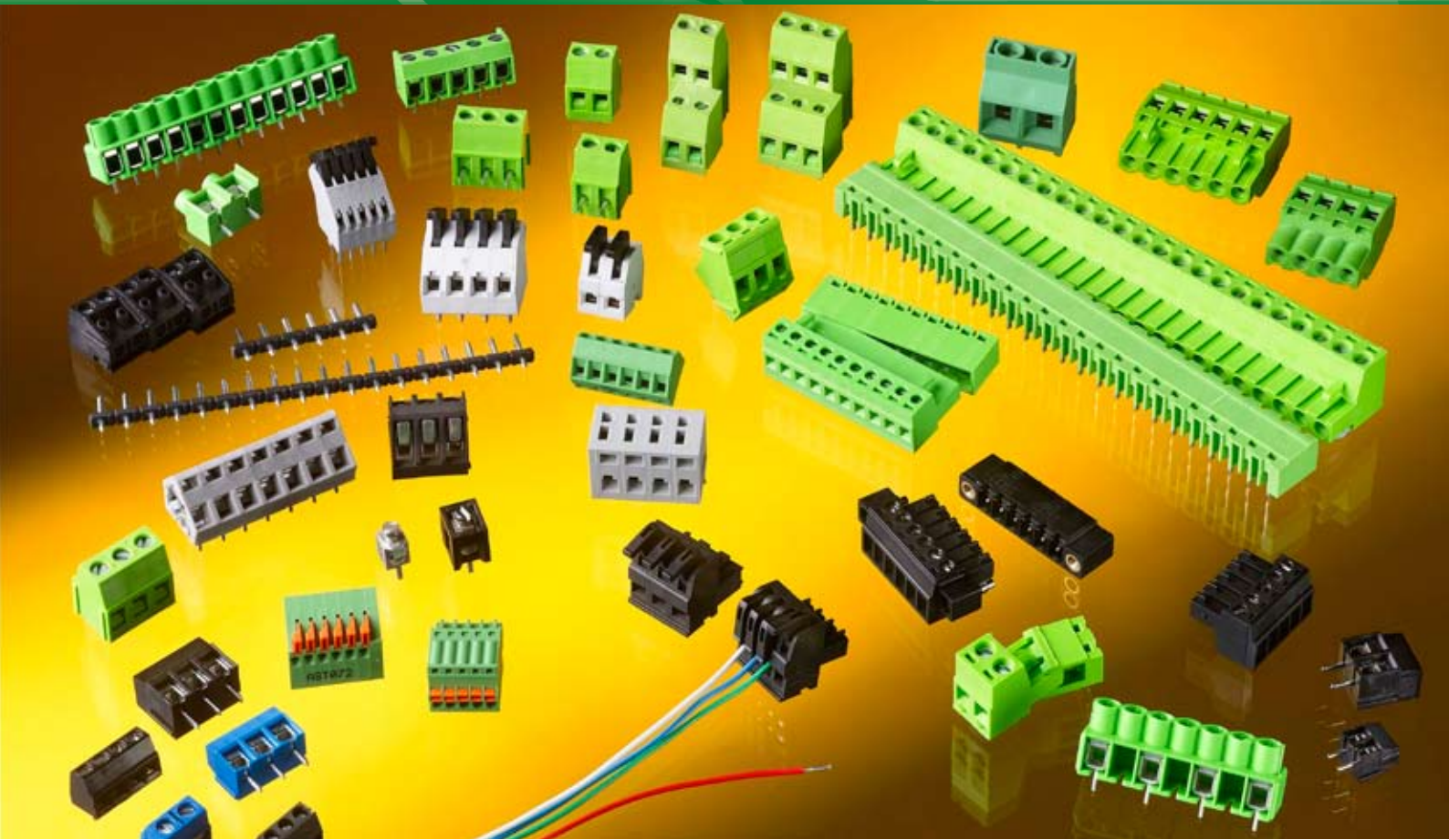
Accessories

- Cable Clamps
- Covers for Pillar Terminal Blocks and Tab Connectors
- Markers and Fixing Pins

Ceramic / Steatite Terminal blocks

- For use in High Temperature environments and applications
- 1 - 4 pole
- 2 & 3 pole Cylindrical options





ELECTRONIC CONNECTORS

Example Applications – Industrial Drives & Controls, Instrumentation, Building Automation, HVAC, Domestic Appliances, Fire & Security, Lighting, Audio

PCB Terminal Blocks

- All moulded in UL94 V-0 Polyamide
- 'No Flame' material, <2 sec burn 750°C GWT available
- Tested and approved according to EN60998-1
- THR and SMT products can be supplied on Tape and Reel for automated picking and placing on to the PCB
- Customer specific colour coding and printing on request
- Working with our manufacturing partners it is possible to offer adapted and completely customised solutions to your specification



Spring

- Patented Springcon solution types supplied 'wire ready' for stranded and solid wires
- 55% labour saving against screw
- 'Tool-Less' operation
- Optimum connection without damage to wire
- 2.50 - 10mm pitch
- Surface Mount and Through Hole Reflow types
- Vertical / Right Angle / 45 Degree options
- Single and double contacts per pole



IDCON

- Insulation Displacement Connector (IDC), 3.5mm pitch, 2.5A, 0.2 - 0.34mm²



Screw

- Wire protector / Rising clamp connections
- Vertical / Right Angle / 35-45 Degree / Double Stack
- 2.54 – 19.02mm pitch
- Connections up to 30A
- Wire entry up to 6mm²
- Single pole connectors
- Through Hole Reflow types



Headers

- 2.50 – 15.24mm pitch
- Vertical / Right Angle / Double Stack
- Through Hole Reflow and Surface Mount types



APLICON Inter-Connects

- PCB-Wire, PCB-PCB inc. D-Type, IDC, RJ, small pitch & SMT variants
- IEE 1394, DVI and USB
- Flexible Circuit Sockets
- The APLICON range is shown in a 150 page catalogue, contact us for your free copy





CABLE GLANDS AND GROMMETS

Example Applications – Indoor / Outdoor Industrial & Domestic Installations, Appliances, Controls, HVAC, Transport, Marine & Aviation, Lighting, Security, Food & Beverage Industry, Hazardous Area Equipment

Cable Glands

- Quality Cable Glands that carry VDE and UL approvals – EN50262
- Metric M6-M110 / PG 7-48 / NPT threads
- IP55 - IP68 rated to 5 bar or 10 bar
- Weatherproof / Liquid Tight
- Plastics - Nylon (UL94-V2, V0) with Trapezoidal thread to combat vibration
- Metals - Nickel Plated Brass, Stainless Steel and Die-cast Zinc
- Spiral Tops, Bell Mouths and Bar-Clamps for improved cable protection and retention
- Breathable Venting Element, M12 thread IP69K. Prevent Enclosure condensation

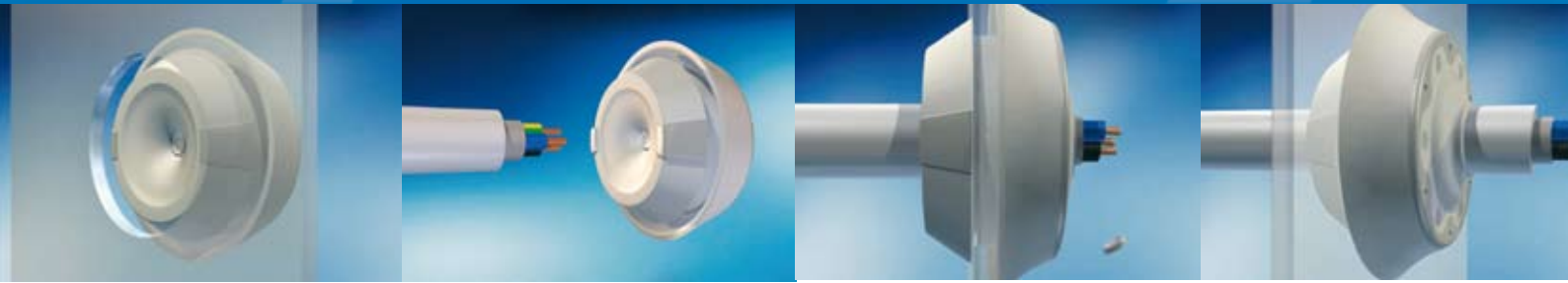


- Multi-hole, Reducing, Silicon, Viton, Flat cable and AS-i Bus cable sealing inserts
- Accessories include Locking Nuts, Blanking Plugs, Reducing and Enlarging Adapters, Dust Caps



CABLE RETENTION GROMMETS

- Klikseal / Rutaseal / Simple Seal
- 'Tool-Less' Push Fit operation saves time and money
- Pop-Out membrane. Grommet stays sealed until pierced by cable and maintains IP rating
- No scissors or screw drivers. Guaranteed even seal around cable
- Revolutionary "Klikseal" grommet offers retained cable anchorage
- Space saving low-profile cable management solution
- IP67 SEMKO & DNV approved
- Metric / PG
- EPDM or Chloroprene
- Self-Adjusting to panel thicknesses between 0.5 – 4mm



EMC CABLE GLANDS AND LOCKNUTS

- ATEX (EEx-e / EEx-i) approved glands with Metric thread

- IP68 to 5 bar.
- Nickel plated brass or Stainless Steel.
- Metric, PG, and NPT threads.
- Spring contact EMC glands allows for through shielding.
- ATEX approvals (EEx-e, EEx-I).
- EMC locknuts feature cutting teeth for improved contact and vibration resistance (ideal for painted or powder coated surfaces)





WEATHERPROOF CONNECTORS

Example Applications - Outdoor / Domestic / Industrial Power Distribution & Equipment Installation, Exterior Lighting, Marine, Pumps, Renewable Energy, Agriculture, Caravans, Roadside, Airports

- Effective, user friendly, safe and versatile power / signal distribution
- IP54 to IP68 in various configurations
- Plug & Socket with panel mount option
- 3 to 8 pole products
- ATEX approved Teetube connector for dust environments
- Suitable for PCB Housing e.g. LED Driver





LEDS AND OPTOELECTRONICS

Example Applications - Industrial & Domestic Appliances, Fire & Security, Instrumentation, Signs, Audio, Automotive, Lighting

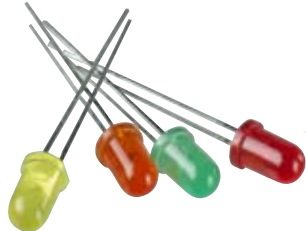
SMD LED

- Industry standard packages 0603 / 0805 / 1206 / PLCC2
- Range of colours and options including High Power, Reverse Mount, Right Angle, Full Colour, Bi-Colour, Dome Top
- Packaged on Tape and Reel



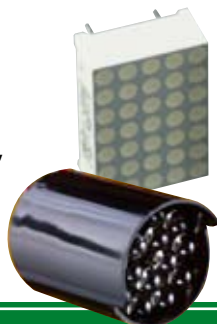
Through Hole LED

- Broad range of colours, shapes, sizes and types including Super Bright, Blinking, Bi-Colour, Full colour, Low Current, UV, Super Flux
- Available Loose or Taped
- Custom options such as pre-formed legs, spacers, wire leads available on request



Housed LED & Clusters

- Single, Bi/Tri/Quad Level, Right Angle, Miniature Solid state
- Standard and Customer Specific colour arrays



Panel Mount Indicators

- LED or Neon
- 3 - 10 mm
- Black / Bright Chrome, Recessed / Prominent
- Integral resistor versions



Seven Segment, Dot Matrix & Displays

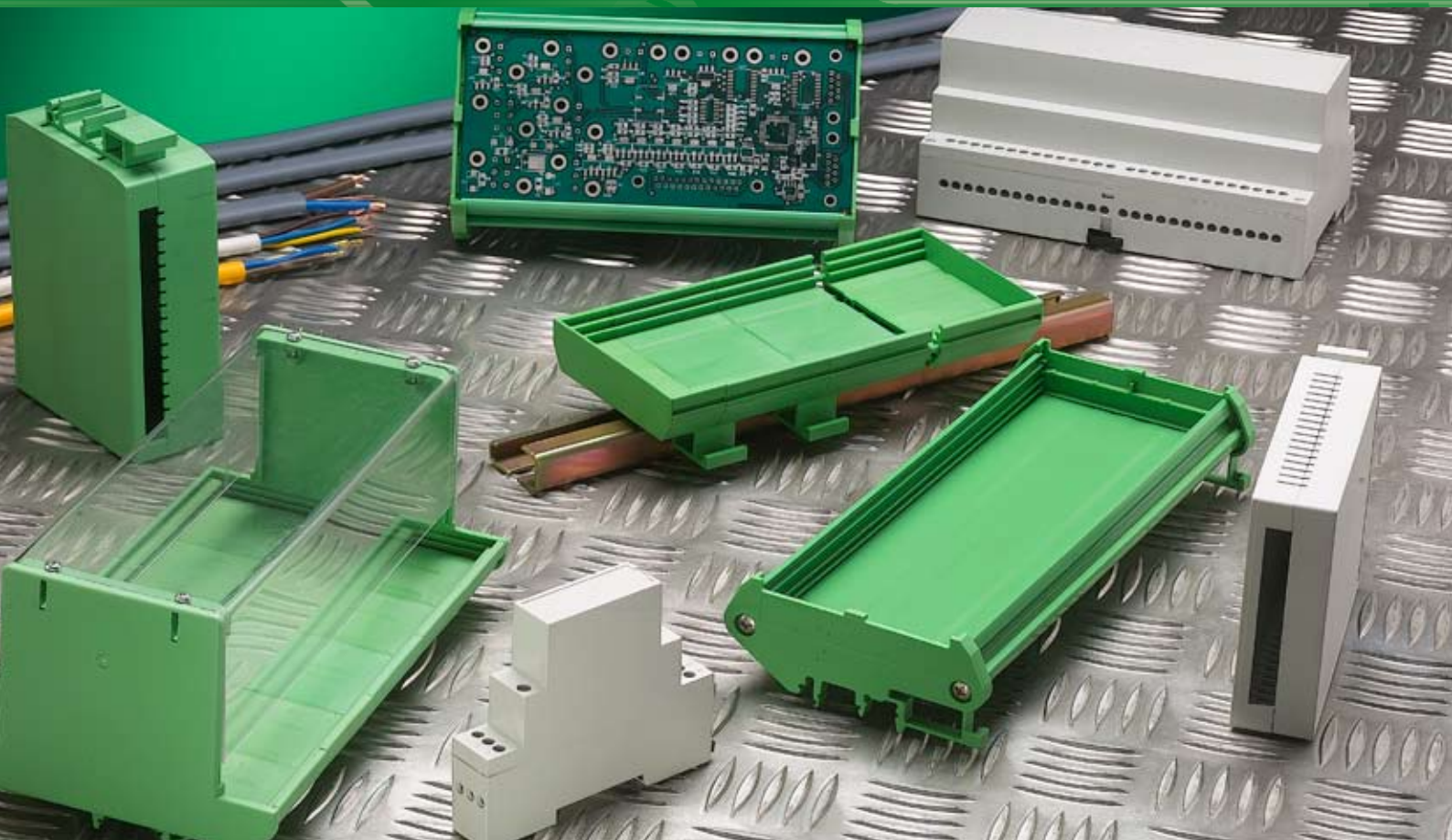
- SMT & Through Hole
- Multi-digit & Alpha-Numeric
- Blue, Green, Red, Yellow including Superbright
- 0.2" (5.08mm) – 4.0" (100mm) display heights between ranges
- Graphs & Lightbars



High Power LED

- 1, 2, 3 Watt
- Blue, Green, Red, Yellow
- With or without Heat Sink





DIN RAIL PCB HOUSINGS

Example Applications - Interface Units, Relay Modules, Instrumentation, Telemetry, Industrial Controls, Communications, Networking, Time Switches

All housings can be custom drilled on any side – Windows, Holes, Slots

Materials

- UL94-V0 Green / Grey / Black
- UL94-V2 (RAL7035) Grey

Two Width Modular Housings

- 43 / 72 / 108 mm Profiles
- Modular or Extruded
- For mounting on A (Top-Hat), Mini A and G DIN Rails

Vertical Rail Housings

- House up to 2 PCBs vertically
- Standard and Custom Size / Cut-out / Drilling / Connector Options
- For mounting on A (Top-Hat), Mini A and G DIN Rails



Module Boxes

- 1 – 9 Units available with different height profiles
- Mount on A (Top-Hat) DIN Rail





SWITCHES

Example Applications - Industrial and Domestic Appliances, Vending, Fire & Security, Controls, HVAC, Gaming, Instrumentation

Snap Switches

- Micro, Sub & Sub-sub miniature, Ultra miniature
- 0.1A – 25A
- Variety of actuators & mounting options
- Positive break action available
- IP40 / IP65 / IP67
- EN60335-1 'No Flame' material, meets stringent <2 sec burn 750°C GWT



Rocker Switches

- 6A – 20A
- Illuminated / Non-Illuminated
- Wide variety of configurations, terminal types & colour options
- Splash Proof Option
- Reliable & rugged structure, fits industry standard panel cut-outs



Gas Ignition Switches

- BEAB Approved
- Rotary & Snap Action
- Pre-Wired switch harness for Gas Cookers



Active Touch Technology

- The latest in touch sensitive switching controls
- Contact us to see how you can push the design boundaries for your new products.

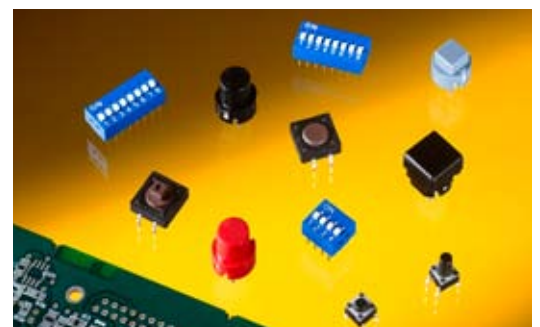
Keyboards & Mice

- Full Cherry Electrical product range



Other Switches

- DIP
- Tact
- Keyboard
- Slide
- Pushbutton
- Encoders





LAMP HOLDERS & LIGHTING ACCESSORIES

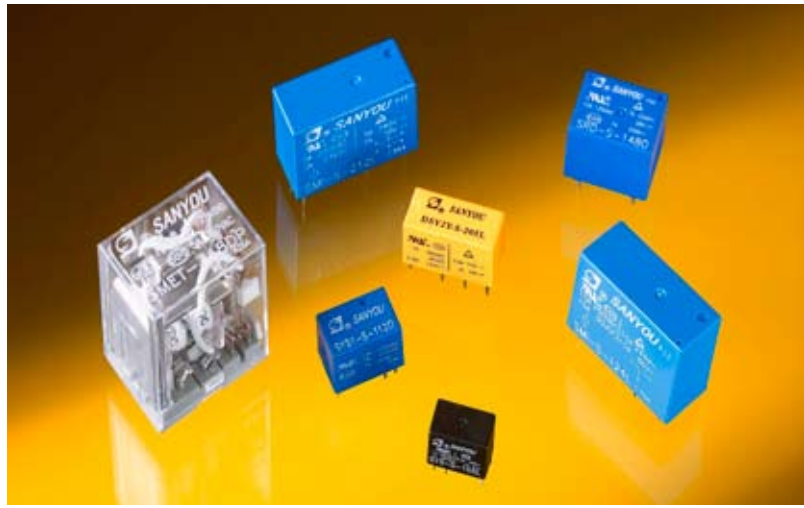
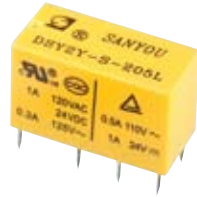
- Industry standard sizes offered in Porcelain and Nylon
- Low voltage Halogen lampholders can be supplied with specific wire requirements
- Position orientated E40 lampholders for 'Horizontal Burning Position'
- Plastic moulded lighting accessories for Decorative and Industrial Lighting applications including Cable Clamps, Grommets, Insulation Protection, Terminal Block Holders and Covers



RELAYS

Example Applications - Security, Domestic Appliances, Thermostats / Controls, Telecommunication Equipment, Medical, Audio, HVAC, Motor Control, Dryers, Alarms, Automotive, Pumps

- Signal / Power / Automotive
- UL / TUV / VDE approvals
- 1 – 4 Pole
- VDC and VAC Coils
- NO / NC / CO Contact forms
- PCB Mount / Quick Connect / Screw Mount
- Open / Sealed Construction



FUSES & BUZZERS

Fuses, Fuseholders & Circuit Protection

- Axial Leaded and Cartridge
- Surface Mount
- Hazardous Area
- Re-Settable
- Blade
- Fuseholders – PCB, In-Line, Automotive
- Varistors

Buzzers, Speakers & Transducers

- PCB mount Electromagnetic Buzzers and Transducers
- Mechanical Buzzers with Leads
- Piezoelectric/Ceramic Buzzers and Transducers PCB mount or with Leads
- Piezo-Ceramic Diaphragm
- Mylar and Paper Speakers

